

702 27

District I
1625 N. French Dr., Hobbs, NM 88240
Phone: (575) 393-6161 Fax: (575) 393-0720
District II
811 S. First St., Artesia, NM 88210
Phone: (575) 748-1283 Fax: (575) 748-9720
District III
1000 Rio Brazos Road, Aztec, NM 87410
Phone: (505) 334-6178 Fax: (505) 334-6170
District IV
1220 S. St. Francis Dr., Sante Fe, NM 87505
Phone: (505) 476-3460 Fax: (505) 476-3462

State of New Mexico
Energy, Minerals & Natural Resources
Department
OIL CONSERVATION DIVISION
1220 South St. Francis Dr.
Sante Fe, NM 87505

FORM C-102
Revised August 1, 2011
Submit one copy to appropriate
District Office

OIL CONSERVATION
ARTESIA DISTRICT
AUG 25 2017

☒ AMENDED REPORT

RECEIVED

WELL LOCATION AND ACREAGE DEDICATION PLAT

¹ API Number 30-015-44119	² Pool Code 98220	³ Pool Name PURPLE SAGE; WOLFCAMP (GAS)
⁴ Property Code 313993	⁵ Property Name TIGER 14-24S-28E RB	⁶ Well Number #222H
⁷ GRID No. 228937	⁸ Operator Name MATADOR PRODUCTION COMPANY	⁹ Elevation 2964'

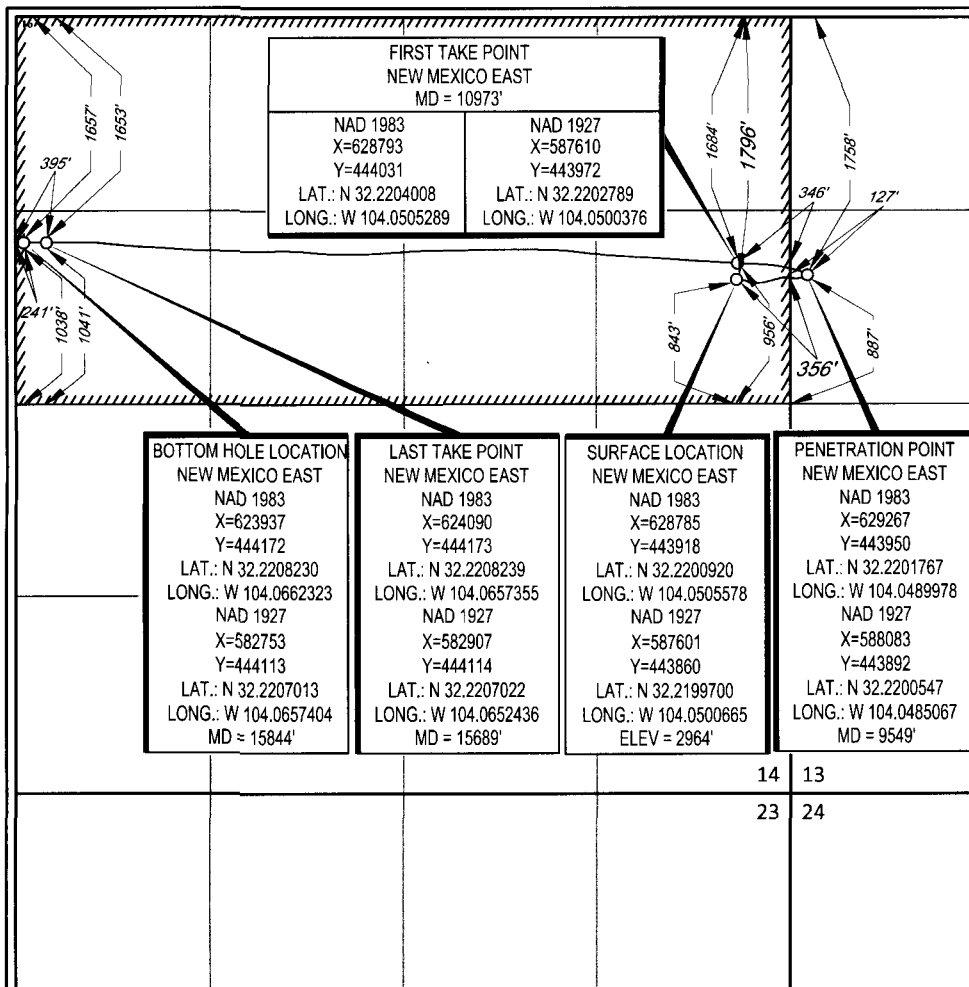
¹⁰Surface Location

UL or lot no.	Section	Township	Range	Lot Idn	Feet from the	North/South line	Feet from the	East/West line	County
H	14	24-S	28-E	-	1796'	NORTH	356'	EAST	EDDY

UL or lot no.	Section	Township	Range	Lot Idn	Feet from the	North/South line	Feet from the	East/West line	County
E	14	24-S	28-E	-	1657'	NORTH	241'	WEST	EDDY

¹² Dedicated Acres 320	¹³ Joint or Infill	¹⁴ Consolidation Code	¹⁵ Order No.
--------------------------------------	-------------------------------	----------------------------------	-------------------------

No allowable will be assigned to this completion until all interests have been consolidated or a non-standard unit has been approved by the division.



¹⁷OPERATOR CERTIFICATION
I hereby certify that the information contained herein is true and complete to the best of my knowledge and belief, and that this organization either owns a working interest or unleased mineral interest in the land including the proposed bottom hole location or has a right to drill this well at this location pursuant to a contract with an owner of such a mineral or working interest, or to a voluntary pooling agreement or a compulsory pooling order heretofore entered by the division.

Sara Hartsfield 8/23/17
Signature Date

Sara Hartsfield
Printed Name

shartsfield@matadorresources.com
E-mail Address

¹⁸SURVEYOR CERTIFICATION
I hereby certify that the well location shown on this plat was plotted from field notes of actual surveys made by me or under my supervision, and that the same is true to the best of my belief.

04/26/2016
Date of Survey

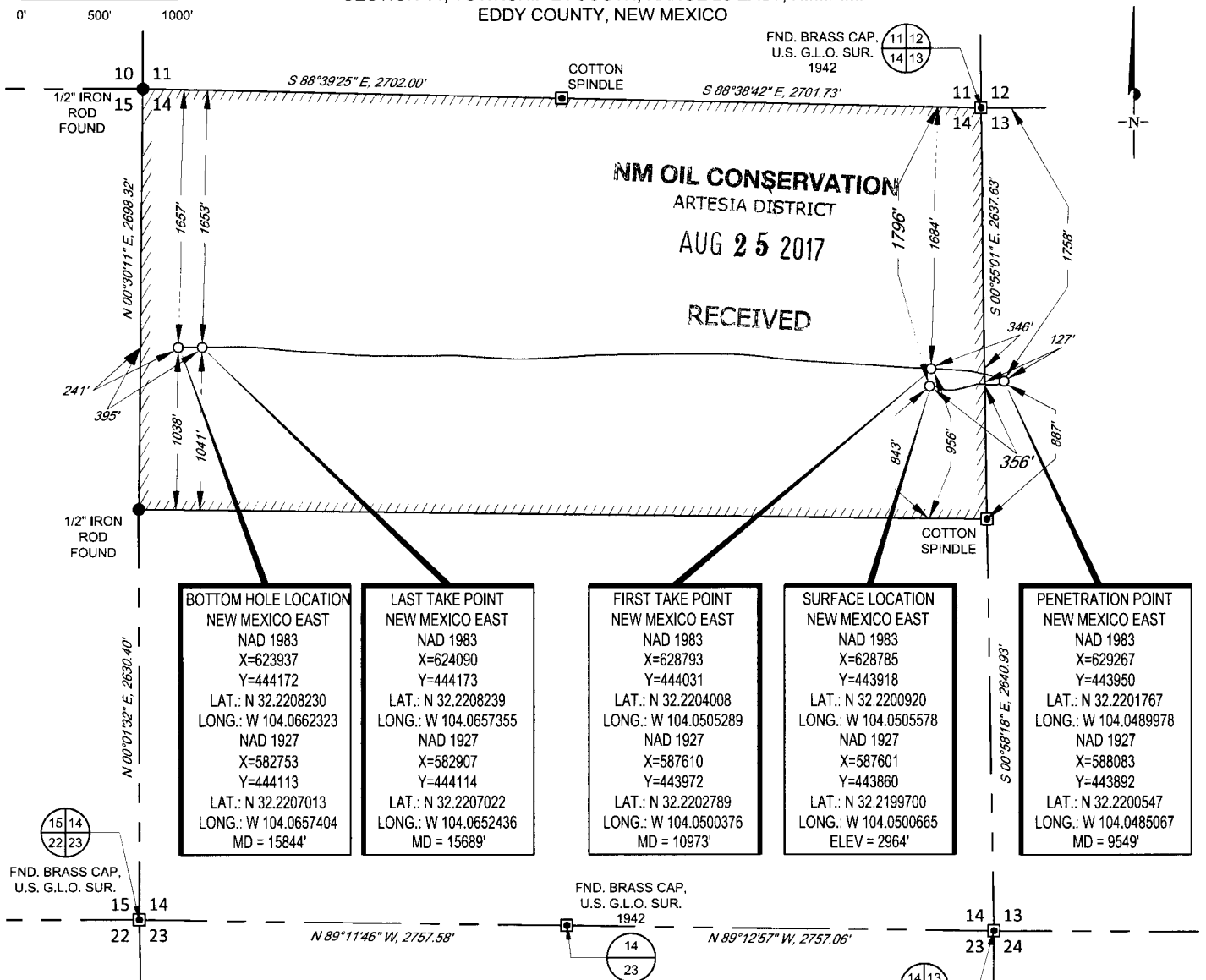
Signature and Seal of Professional Surveyor

MICHAEL BROWN
NEW MEXICO
18329
PROFESSIONAL SURVEYOR

Certificate Number

SCALE: 1" = 1000'

SECTION 14, TOWNSHIP 24 SOUTH, RANGE 28 EAST, N.M.P.M.
EDDY COUNTY, NEW MEXICO



BOTTOM HOLE LOCATION
NEW MEXICO EAST
NAD 1983
X=623937
Y=444172
LAT.: N 32.2208230
LONG.: W 104.0662323
NAD 1927
X=582753
Y=444113
LAT.: N 32.2207013
LONG.: W 104.0657404
MD = 15844'

LAST TAKE POINT
NEW MEXICO EAST
NAD 1983
X=624090
Y=444173
LAT.: N 32.2208239
LONG.: W 104.0657355
NAD 1927
X=582907
Y=444114
LAT.: N 32.2207022
LONG.: W 104.0652436
MD = 15689'

FIRST TAKE POINT
NEW MEXICO EAST
NAD 1983
X=628793
Y=444031
LAT.: N 32.2204008
LONG.: W 104.0505289
NAD 1927
X=587610
Y=443972
LAT.: N 32.2202789
LONG.: W 104.0500376
MD = 10973'

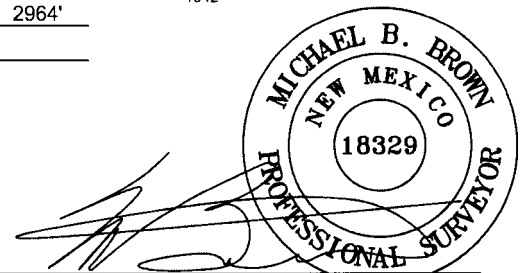
SURFACE LOCATION
NEW MEXICO EAST
NAD 1983
X=628785
Y=443918
LAT.: N 32.2200920
LONG.: W 104.0505578
NAD 1927
X=587601
Y=443860
LAT.: N 32.2199700
LONG.: W 104.0500665
ELEV = 2964'

PENETRATION POINT
NEW MEXICO EAST
NAD 1983
X=629267
Y=443950
LAT.: N 32.2201767
LONG.: W 104.0489978
NAD 1927
X=588083
Y=443892
LAT.: N 32.2200547
LONG.: W 104.0485067
MD = 9549'

LEASE NAME & WELL NO.: TIGER 14-24S-28E RB #222H
SECTION 14 TWP 24-S RGE 28-E SURVEY N.M.P.M.
COUNTY EDDY STATE NM ELEVATION 2964'
DESCRIPTION 1796' FNL & 356' FEL



TOPOGRAPHIC
LOYALTY INNOVATION LEGACY
1400 EVERMAN PARKWAY, Ste. 197 • FT. WORTH, TEXAS 76140
TELEPHONE: (817) 744-7512 • FAX (817) 744-7548
2903 NORTH BIG SPRING • MIDLAND, TEXAS 79705
TELEPHONE: (432) 682-1653 OR (800) 767-1653 • FAX (432) 682-1743
WWW.TOPOGRAPHIC.COM



Michael Blake Brown, P.S. No. 18329
JULY 31, 2017

TIGER 14-24S-28E RB #222H AS-COMPLETED	REVISION:
DATE: 07/31/17	
FILE: AD_TIGER_14-24S-28E_RB_222H	
DRAWN BY: GJU	
SHEET: 1 OF 1	

NOTES:
1. ORIGINAL DOCUMENT SIZE: 8.5" X 11"
2. ALL BEARINGS, DISTANCES, AND COORDINATE VALUES CONTAINED HEREIN ARE GRID BASED UPON THE NEW MEXICO STATE PLANE COORDINATE SYSTEM, EAST ZONE, U.S. SURVEY FEET, NORTH AMERICAN DATUM 1983.
3. THIS EASEMENT/SERVITUDE LOCATION SHOWN HEREON HAS BEEN SURVEYED ON THE GROUND UNDER MY SUPERVISION AND PREPARED ACCORDING TO THE EVIDENCE FOUND AT THE TIME OF SURVEY, AND DATA PROVIDED BY MATADOR PRODUCTION COMPANY. THIS CERTIFICATION IS MADE AND LIMITED TO THOSE PERSONS OR ENTITIES SHOWN ON THE FACE OF THIS PLAT AND IS NON-TRANSFERABLE. THIS SURVEY IS CERTIFIED FOR THIS TRANSACTION ONLY.