

NM OIL CONSERVATION

ARTESIA DISTRICT

AUG 31 2017

Form C-102

August 1, 2011

RECEIVED

Submit one copy to appropriate

District Office

☒ AMENDED REPORT

District I
1625 N. French Dr., Hobbs, NM 88240
Phone: (575) 393-6161 Fax: (575) 393-0720
District II
811 S. First St., Artesia, NM 88210
Phone: (575) 748-1283 Fax: (575) 748-9720
District III
1000 Rio Brazos Road, Aztec, NM 87410
Phone: (505) 334-6178 Fax: (505) 334-6170
District IV
1220 S. St. Francis Dr., Santa Fe, NM 87505
Phone: (505) 476-3460 Fax: (505) 476-3462

State of New Mexico Energy, Minerals & Natural Resources Department OIL CONSERVATION DIVISION 1220 South St. Francis Dr. Santa Fe, NM 87505

WELL LOCATION AND ACREAGE DEDICATION PLAT AS-DRILLED PLAT

¹ API Number	² Pool Code 98220	³ Pool Name PURPLE SAGE WOLFCAMP GAS POOL
⁴ Property Code	⁵ Property Name C STATE 16	⁶ Well Number 2H
⁷ OGRID No. 246289	⁸ Operator Name RKI EXPLORATION & PRODUCTION, LLC	⁹ Elevation 3135'

¹⁰ Surface Location

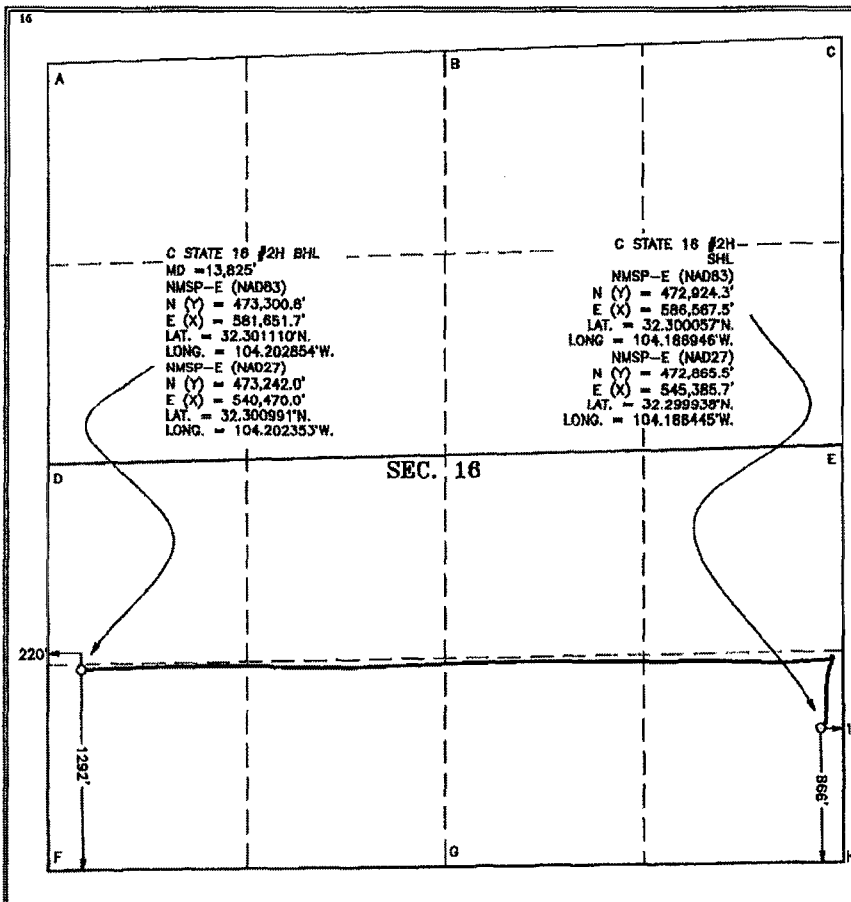
UL or lot no.	Section	Township	Range	Lot Idn	Feet from the	North/South line	Feet from the	East/West line	County
P	16	23 S	27 E		866	SOUTH	150	EAST	EDDY

¹¹ Bottom Hole Location If Different From Surface

UL or lot no.	Section	Township	Range	Lot Idn	Feet from the	North/South line	Feet from the	East/West line	County
M	16	23 S	27 E		1,292	SOUTH	220	WEST	EDDY

¹² Dedicated Acres 320.0	¹³ Joint or Infill	¹⁴ Consolidation Code	¹⁵ Order No.
--	-------------------------------	----------------------------------	-------------------------

No allowable will be assigned to this completion until all interests have been consolidated or a non-standard unit has been approved by the division.



¹⁷ OPERATOR CERTIFICATION

I hereby certify that the information contained herein is true and complete to the best of my knowledge and belief, and that this organization either owns a working interest or undivided mineral interest in the land including the proposed bottom hole location or has a right to drill this well at this location pursuant to a contract with an owner of such a mineral or working interest, or to a voluntary pooling agreement or a compulsory pooling order heretofore entered by the division.

Signature: *Crystal Fulton* Date: 8-28-17

Printed Name: Crystal Fulton

E-mail Address: crystal.fulton@wpxenergy.com

¹⁸ SURVEYOR CERTIFICATION

I hereby certify that the well location shown on this plat was plotted from field notes of actual surveys made by me or under my supervision, and that the same is true and correct to the best of my belief.

08-28-2017

Date of Survey

Signature and Seal of Professional Surveyor:

Mark Dillon Harp

MARK DILLON HARP 23786

Certificate Number



RR

2017020194