

NM OIL CONSERVATION
ARTESIA DISTRICT

SEP 26 2017

RECEIVED

OXY

PRD NM DIRECTIONAL PLANS (NAD 1983)

Turkey Track 4-3 State

Turkey Track 4-3 State 22H

WB00

Plan: Permitting Plan

Standard Planning Report

09 August, 2017

Oxy Planning Report

Database:	HOPSPP	Local Co-ordinate Reference:	Well Turkey Track 4-3 State 22H
Company:	ENGINEERING DESIGNS	TVD Reference:	Datum @ 3435.40ft
Project:	PRD NM DIRECTIONAL PLANS (NAD 1983)	MD Reference:	Datum @ 3435.40ft
Site:	Turkey Track 4-3 State	North Reference:	Grid
Well:	Turkey Track 4-3 State 22H	Survey Calculation Method:	Minimum Curvature
Wellbore:	WB00		
Design:	Permitting Plan		

Project: PRD NM DIRECTIONAL PLANS (NAD 1983)			
Map System:	US State Plane 1983	System Datum:	Mean Sea Level
Geo Datum:	North American Datum 1983		
Map Zone:	New Mexico Eastern Zone		Using geodetic scale factor

Site: Turkey Track 4-3 State			
Site Position:		Northing:	616,311.49 usft
From:	Map	Easting:	617,286.73 usft
Position Uncertainty:	0.00 ft	Slot Radius:	13.200 in
		Latitude:	32° 41' 38.545006 N
		Longitude:	104° 5' 11.216080 W
		Grid Convergence:	0.13 °

Well: Turkey Track 4-3 State 22H			
Well Position	+N/-S	-35.00 ft	Northing: 616,276.49 usft
	+E/-W	-0.06 ft	Easting: 617,286.67 usft
Position Uncertainty		0.00 ft	Wellhead Elevation: 0.00 ft
			Ground Level: 3,408.90 ft
			Latitude: 32° 41' 38.198674 N
			Longitude: 104° 5' 11.217735 W

Wellbore:	WB00
------------------	------

Magnetics	Model Name	Sample Date	Declination (°)	Dip Angle (°)	Field Strength (nT)
	HDGM	8/9/2017	7.53	60.53	48,229

Design: Permitting Plan				
Audit Notes:				
Version:		Phase:	PROTOTYPE	Tie On Depth: 0.00
Vertical Section:	Depth From TVD (ft)	+N/-S (ft)	+E/-W (ft)	Direction (°)
	0.00	0.00	0.00	94.54

Measured Depth (ft)	Inclination (°)	Azimuth (°)	Vertical Depth (ft)	+N/-S (ft)	+E/-W (ft)	Dogleg Rate (°/100ft)	Build Rate ("/100ft)	Turn Rate (°/100ft)	TFO (ft)	Target
0.00	0.00	0.00	0.00	0.00	0.00	0.00	0.00	0.00	0.00	
1,698.00	0.00	0.00	1,698.00	0.00	0.00	0.00	0.00	0.00	0.00	
2,196.57	9.97	215.30	2,194.06	-35.32	-25.01	2.00	2.00	0.00	215.30	
6,904.61	9.97	215.30	6,830.98	-700.63	-496.14	0.00	0.00	0.00	0.00	
7,403.18	0.00	90.23	7,327.04	-735.94	-521.14	2.00	-2.00	0.00	180.00	TT_4-3_State_22H_
8,296.88	89.37	90.23	7,899.96	-738.24	45.51	10.00	10.00	0.00	90.23	
18,047.85	89.95	90.23	7,958.00	-777.81	9,796.18	0.01	0.01	0.00	0.00	TT_4-3_State_22H_

Oxy Planning Report

Database:	HOPSPP	Local Coordinate Reference:	Well Turkey Track 4-3 State 22H
Company:	ENGINEERING DESIGNS	TVD Reference:	Datum @ 3435.40ft
Project:	PRD NM DIRECTIONAL PLANS (NAD 1983)	MD Reference:	Datum @ 3435.40ft
Site:	Turkey Track 4-3 State	North Reference:	Grid
Well:	Turkey Track 4-3 State 22H	Survey Calculation Method:	Minimum Curvature
Wellbore:	WB00		
Design:	Permitting Plan		

Planned Survey										
Measured Depth (ft)	Inclination (°)	Azimuth (°)	Vertical Depth (ft)	N/S (ft)	E/W (ft)	Vertical Section (ft)	Dogleg Rate (°/100ft)	Build Rate ("/100ft)	Turn Rate (°/100ft)	
0.00	0.00	0.00	0.00	0.00	0.00	0.00	0.00	0.00	0.00	0.00
100.00	0.00	0.00	100.00	0.00	0.00	0.00	0.00	0.00	0.00	0.00
200.00	0.00	0.00	200.00	0.00	0.00	0.00	0.00	0.00	0.00	0.00
300.00	0.00	0.00	300.00	0.00	0.00	0.00	0.00	0.00	0.00	0.00
400.00	0.00	0.00	400.00	0.00	0.00	0.00	0.00	0.00	0.00	0.00
500.00	0.00	0.00	500.00	0.00	0.00	0.00	0.00	0.00	0.00	0.00
600.00	0.00	0.00	600.00	0.00	0.00	0.00	0.00	0.00	0.00	0.00
700.00	0.00	0.00	700.00	0.00	0.00	0.00	0.00	0.00	0.00	0.00
800.00	0.00	0.00	800.00	0.00	0.00	0.00	0.00	0.00	0.00	0.00
900.00	0.00	0.00	900.00	0.00	0.00	0.00	0.00	0.00	0.00	0.00
1,000.00	0.00	0.00	1,000.00	0.00	0.00	0.00	0.00	0.00	0.00	0.00
1,100.00	0.00	0.00	1,100.00	0.00	0.00	0.00	0.00	0.00	0.00	0.00
1,200.00	0.00	0.00	1,200.00	0.00	0.00	0.00	0.00	0.00	0.00	0.00
1,300.00	0.00	0.00	1,300.00	0.00	0.00	0.00	0.00	0.00	0.00	0.00
1,400.00	0.00	0.00	1,400.00	0.00	0.00	0.00	0.00	0.00	0.00	0.00
1,500.00	0.00	0.00	1,500.00	0.00	0.00	0.00	0.00	0.00	0.00	0.00
1,600.00	0.00	0.00	1,600.00	0.00	0.00	0.00	0.00	0.00	0.00	0.00
1,698.00	0.00	0.00	1,698.00	0.00	0.00	0.00	0.00	0.00	0.00	0.00
1,700.00	0.04	215.30	1,700.00	0.00	0.00	0.00	2.00	2.00	0.00	0.00
1,800.00	2.04	215.30	1,799.98	-1.48	-1.05	-0.93	2.00	2.00	0.00	0.00
1,900.00	4.04	215.30	1,899.83	-5.81	-4.11	-3.64	2.00	2.00	0.00	0.00
2,000.00	6.04	215.30	1,999.44	-12.98	-9.19	-8.13	2.00	2.00	0.00	0.00
2,100.00	8.04	215.30	2,098.68	-22.98	-16.27	-14.40	2.00	2.00	0.00	0.00
2,196.57	9.97	215.30	2,194.06	-35.32	-25.01	-22.14	2.00	2.00	0.00	0.00
2,200.00	9.97	215.30	2,197.44	-35.80	-25.35	-22.44	0.00	0.00	0.00	0.00
2,300.00	9.97	215.30	2,295.92	-49.93	-35.36	-31.30	0.00	0.00	0.00	0.00
2,400.00	9.97	215.30	2,394.41	-64.06	-45.37	-40.15	0.00	0.00	0.00	0.00
2,500.00	9.97	215.30	2,492.90	-78.20	-55.37	-49.01	0.00	0.00	0.00	0.00
2,600.00	9.97	215.30	2,591.39	-92.33	-65.38	-57.87	0.00	0.00	0.00	0.00
2,700.00	9.97	215.30	2,689.88	-106.46	-75.39	-66.72	0.00	0.00	0.00	0.00
2,800.00	9.97	215.30	2,788.37	-120.59	-85.39	-75.58	0.00	0.00	0.00	0.00
2,900.00	9.97	215.30	2,886.86	-134.72	-95.40	-84.44	0.00	0.00	0.00	0.00
3,000.00	9.97	215.30	2,985.35	-148.85	-105.41	-93.30	0.00	0.00	0.00	0.00
3,100.00	9.97	215.30	3,083.84	-162.98	-115.41	-102.15	0.00	0.00	0.00	0.00
3,200.00	9.97	215.30	3,182.33	-177.11	-125.42	-111.01	0.00	0.00	0.00	0.00
3,300.00	9.97	215.30	3,280.82	-191.25	-135.43	-119.87	0.00	0.00	0.00	0.00
3,400.00	9.97	215.30	3,379.31	-205.38	-145.43	-128.72	0.00	0.00	0.00	0.00
3,500.00	9.97	215.30	3,477.80	-219.51	-155.44	-137.58	0.00	0.00	0.00	0.00
3,600.00	9.97	215.30	3,576.29	-233.64	-165.45	-146.44	0.00	0.00	0.00	0.00
3,700.00	9.97	215.30	3,674.78	-247.77	-175.45	-155.29	0.00	0.00	0.00	0.00
3,800.00	9.97	215.30	3,773.27	-261.90	-185.46	-164.15	0.00	0.00	0.00	0.00
3,900.00	9.97	215.30	3,871.76	-276.03	-195.47	-173.01	0.00	0.00	0.00	0.00
4,000.00	9.97	215.30	3,970.25	-290.17	-205.48	-181.87	0.00	0.00	0.00	0.00
4,100.00	9.97	215.30	4,068.73	-304.30	-215.48	-190.72	0.00	0.00	0.00	0.00
4,200.00	9.97	215.30	4,167.22	-318.43	-225.49	-199.58	0.00	0.00	0.00	0.00
4,300.00	9.97	215.30	4,265.71	-332.56	-235.50	-208.44	0.00	0.00	0.00	0.00
4,400.00	9.97	215.30	4,364.20	-346.69	-245.50	-217.29	0.00	0.00	0.00	0.00
4,500.00	9.97	215.30	4,462.69	-360.82	-255.51	-226.15	0.00	0.00	0.00	0.00
4,600.00	9.97	215.30	4,561.18	-374.95	-265.52	-235.01	0.00	0.00	0.00	0.00
4,700.00	9.97	215.30	4,659.67	-389.09	-275.52	-243.86	0.00	0.00	0.00	0.00
4,800.00	9.97	215.30	4,758.16	-403.22	-285.53	-252.72	0.00	0.00	0.00	0.00
4,900.00	9.97	215.30	4,856.65	-417.35	-295.54	-261.58	0.00	0.00	0.00	0.00
5,000.00	9.97	215.30	4,955.14	-431.48	-305.54	-270.44	0.00	0.00	0.00	0.00
5,100.00	9.97	215.30	5,053.63	-445.61	-315.55	-279.29	0.00	0.00	0.00	0.00

Oxy Planning Report

Database	HOPSPP	Local Co-ordinate Reference	Well Turkey Track 4-3 State 22H
Company	ENGINEERING DESIGNS	TVD Reference	Datum @ 3435.40ft
Project	PRD NM DIRECTIONAL PLANS (NAD 1983)	MD Reference	Datum @ 3435.40ft
Site	Turkey Track 4-3 State	North Reference	Grid
Well	Turkey Track 4-3 State 22H	Survey Calculation Method:	Minimum Curvature
Wellbore	WB00		
Design	Permitting Plan		

Planned Survey										
Measured Depth (ft)	Inclination (°)	Azimuth (°)	Vertical Depth (ft)	+N/-S (ft)	+E/-W (ft)	Vertical Section (ft)	Dogleg Rate (°/100ft)	Build Rate ("/100ft)	Turn Rate (°/100ft)	
5,200.00	9.97	215.30	5,152.12	-459.74	-325.56	-288.15	0.00	0.00	0.00	
5,300.00	9.97	215.30	5,250.61	-473.87	-335.56	-297.01	0.00	0.00	0.00	
5,400.00	9.97	215.30	5,349.10	-488.00	-345.57	-305.86	0.00	0.00	0.00	
5,500.00	9.97	215.30	5,447.59	-502.14	-355.58	-314.72	0.00	0.00	0.00	
5,600.00	9.97	215.30	5,546.08	-516.27	-365.59	-323.58	0.00	0.00	0.00	
5,700.00	9.97	215.30	5,644.57	-530.40	-375.59	-332.43	0.00	0.00	0.00	
5,800.00	9.97	215.30	5,743.05	-544.53	-385.60	-341.29	0.00	0.00	0.00	
5,900.00	9.97	215.30	5,841.54	-558.66	-395.61	-350.15	0.00	0.00	0.00	
6,000.00	9.97	215.30	5,940.03	-572.79	-405.61	-359.01	0.00	0.00	0.00	
6,100.00	9.97	215.30	6,038.52	-586.92	-415.62	-367.86	0.00	0.00	0.00	
6,200.00	9.97	215.30	6,137.01	-601.06	-425.63	-376.72	0.00	0.00	0.00	
6,300.00	9.97	215.30	6,235.50	-615.19	-435.63	-385.58	0.00	0.00	0.00	
6,400.00	9.97	215.30	6,333.99	-629.32	-445.64	-394.43	0.00	0.00	0.00	
6,500.00	9.97	215.30	6,432.48	-643.45	-455.65	-403.29	0.00	0.00	0.00	
6,600.00	9.97	215.30	6,530.97	-657.58	-465.65	-412.15	0.00	0.00	0.00	
6,700.00	9.97	215.30	6,629.46	-671.71	-475.66	-421.00	0.00	0.00	0.00	
6,800.00	9.97	215.30	6,727.95	-685.84	-485.67	-429.86	0.00	0.00	0.00	
6,900.00	9.97	215.30	6,826.44	-699.97	-495.67	-438.72	0.00	0.00	0.00	
6,904.61	9.97	215.30	6,830.98	-700.63	-496.14	-439.13	0.00	0.00	0.00	
7,000.00	8.06	215.30	6,925.19	-712.83	-504.78	-446.77	2.00	-2.00	0.00	
7,100.00	6.06	215.30	7,024.42	-722.86	-511.88	-453.06	2.00	-2.00	0.00	
7,200.00	4.06	215.30	7,124.03	-730.07	-516.98	-457.58	2.00	-2.00	0.00	
7,300.00	2.06	215.30	7,223.88	-734.43	-520.07	-460.31	2.00	-2.00	0.00	
7,400.00	0.06	215.30	7,323.86	-735.94	-521.14	-461.26	2.00	-2.00	0.00	
7,403.18	0.00	90.23	7,327.04	-735.94	-521.14	-461.26	2.00	-2.00	0.00	
7,500.00	9.68	90.23	7,423.40	-735.98	-512.98	-453.13	10.00	10.00	0.00	
7,600.00	19.68	90.23	7,520.01	-736.08	-487.67	-427.88	10.00	10.00	0.00	
7,700.00	29.68	90.23	7,610.76	-736.25	-445.97	-386.30	10.00	10.00	0.00	
7,800.00	39.68	90.23	7,692.89	-736.48	-389.14	-329.63	10.00	10.00	0.00	
7,900.00	49.68	90.23	7,763.90	-736.76	-318.91	-259.60	10.00	10.00	0.00	
8,000.00	59.68	90.23	7,821.64	-737.09	-237.42	-178.34	10.00	10.00	0.00	
8,100.00	69.68	90.23	7,864.35	-737.46	-147.14	-88.31	10.00	10.00	0.00	
8,200.00	79.68	90.23	7,890.73	-737.85	-50.82	7.74	10.00	10.00	0.00	
8,296.88	89.37	90.23	7,899.96	-738.24	45.51	103.80	10.00	10.00	0.00	
8,300.00	89.37	90.23	7,900.00	-738.26	48.62	106.90	0.01	0.01	0.00	
8,400.00	89.38	90.23	7,901.09	-738.66	148.62	206.61	0.01	0.01	0.00	
8,500.00	89.38	90.23	7,902.18	-739.07	248.61	306.33	0.01	0.01	0.00	
8,600.00	89.39	90.23	7,903.25	-739.47	348.60	406.04	0.01	0.01	0.00	
8,700.00	89.39	90.23	7,904.31	-739.88	448.60	505.75	0.01	0.01	0.00	
8,800.00	89.40	90.23	7,905.36	-740.28	548.59	605.46	0.01	0.01	0.00	
8,900.00	89.41	90.23	7,906.41	-740.69	648.58	705.17	0.01	0.01	0.00	
9,000.00	89.41	90.23	7,907.44	-741.10	748.58	804.89	0.01	0.01	0.00	
9,100.00	89.42	90.23	7,908.46	-741.50	848.57	904.60	0.01	0.01	0.00	
9,200.00	89.42	90.23	7,909.47	-741.91	948.57	1,004.31	0.01	0.01	0.00	
9,300.00	89.43	90.23	7,910.47	-742.31	1,048.56	1,104.02	0.01	0.01	0.00	
9,400.00	89.44	90.23	7,911.46	-742.72	1,148.55	1,203.74	0.01	0.01	0.00	
9,500.00	89.44	90.23	7,912.44	-743.12	1,248.55	1,303.45	0.01	0.01	0.00	
9,600.00	89.45	90.23	7,913.41	-743.53	1,348.54	1,403.16	0.01	0.01	0.00	
9,700.00	89.45	90.23	7,914.37	-743.94	1,448.54	1,502.87	0.01	0.01	0.00	
9,800.00	89.46	90.23	7,915.32	-744.34	1,548.53	1,602.59	0.01	0.01	0.00	
9,900.00	89.47	90.23	7,916.26	-744.75	1,648.53	1,702.30	0.01	0.01	0.00	
10,000.00	89.47	90.23	7,917.19	-745.15	1,748.52	1,802.01	0.01	0.01	0.00	
10,100.00	89.48	90.23	7,918.11	-745.56	1,848.52	1,901.73	0.01	0.01	0.00	
10,200.00	89.48	90.23	7,919.02	-745.96	1,948.51	2,001.44	0.01	0.01	0.00	

Oxy Planning Report

Database:	HOPSP	Local Co-ordinate Reference:	Well Turkey Track 4-3 State 22H
Company:	ENGINEERING DESIGNS	TVD Reference:	Datum @ 3435.40ft
Project:	PRD NM DIRECTIONAL PLANS (NAD 1983)	MD Reference:	Datum @ 3435.40ft
Site:	Turkey Track 4-3 State	North Reference:	Grid
Well:	Turkey Track 4-3 State 22H	Survey Calculation Method:	Minimum Curvature
Wellbore:	WB00		
Design:	Permitting Plan		

Planned Survey										
Measured Depth (ft)	Inclination (°)	Azimuth (°)	Vertical Depth (ft)	+N/S (ft)	+E/W (ft)	Vertical Section (ft)	Dogleg Rate (°/100ft)	Build Rate (°/100ft)	Turn Rate (°/100ft)	
10,300.00	89.49	90.23	7,919.91	-746.37	2,048.51	2,101.15	0.01	0.01	0.00	
10,400.00	89.49	90.23	7,920.80	-746.78	2,148.50	2,200.87	0.01	0.01	0.00	
10,500.00	89.50	90.23	7,921.68	-747.18	2,248.50	2,300.58	0.01	0.01	0.00	
10,600.00	89.51	90.23	7,922.54	-747.59	2,348.49	2,400.30	0.01	0.01	0.00	
10,700.00	89.51	90.23	7,923.40	-747.99	2,448.49	2,500.01	0.01	0.01	0.00	
10,800.00	89.52	90.23	7,924.25	-748.40	2,548.48	2,599.72	0.01	0.01	0.00	
10,900.00	89.52	90.23	7,925.08	-748.80	2,648.48	2,699.44	0.01	0.01	0.00	
11,000.00	89.53	90.23	7,925.91	-749.21	2,748.48	2,799.15	0.01	0.01	0.00	
11,100.00	89.54	90.23	7,926.72	-749.62	2,848.47	2,898.87	0.01	0.01	0.00	
11,200.00	89.54	90.23	7,927.52	-750.02	2,948.47	2,998.58	0.01	0.01	0.00	
11,300.00	89.55	90.23	7,928.32	-750.43	3,048.46	3,098.30	0.01	0.01	0.00	
11,400.00	89.55	90.23	7,929.10	-750.83	3,148.46	3,198.01	0.01	0.01	0.00	
11,500.00	89.56	90.23	7,929.88	-751.24	3,248.46	3,297.72	0.01	0.01	0.00	
11,600.00	89.57	90.23	7,930.64	-751.64	3,348.45	3,397.44	0.01	0.01	0.00	
11,700.00	89.57	90.23	7,931.39	-752.05	3,448.45	3,497.15	0.01	0.01	0.00	
11,800.00	89.58	90.23	7,932.13	-752.46	3,548.45	3,596.87	0.01	0.01	0.00	
11,900.00	89.58	90.23	7,932.87	-752.86	3,648.44	3,696.58	0.01	0.01	0.00	
12,000.00	89.59	90.23	7,933.59	-753.27	3,748.44	3,796.30	0.01	0.01	0.00	
12,100.00	89.60	90.23	7,934.30	-753.67	3,848.44	3,896.01	0.01	0.01	0.00	
12,200.00	89.60	90.23	7,935.00	-754.08	3,948.43	3,995.73	0.01	0.01	0.00	
12,300.00	89.61	90.23	7,935.69	-754.49	4,048.43	4,095.44	0.01	0.01	0.00	
12,400.00	89.61	90.23	7,936.37	-754.89	4,148.43	4,195.16	0.01	0.01	0.00	
12,500.00	89.62	90.23	7,937.04	-755.30	4,248.42	4,294.87	0.01	0.01	0.00	
12,600.00	89.63	90.23	7,937.70	-755.70	4,348.42	4,394.59	0.01	0.01	0.00	
12,700.00	89.63	90.23	7,938.35	-756.11	4,448.42	4,494.31	0.01	0.01	0.00	
12,800.00	89.64	90.23	7,938.99	-756.51	4,548.41	4,594.02	0.01	0.01	0.00	
12,900.00	89.64	90.23	7,939.62	-756.92	4,648.41	4,693.74	0.01	0.01	0.00	
13,000.00	89.65	90.23	7,940.24	-757.33	4,748.41	4,793.45	0.01	0.01	0.00	
13,100.00	89.65	90.23	7,940.84	-757.73	4,848.41	4,893.17	0.01	0.01	0.00	
13,200.00	89.66	90.23	7,941.44	-758.14	4,948.40	4,992.88	0.01	0.01	0.00	
13,300.00	89.67	90.23	7,942.03	-758.54	5,048.40	5,092.60	0.01	0.01	0.00	
13,400.00	89.67	90.23	7,942.60	-758.95	5,148.40	5,192.32	0.01	0.01	0.00	
13,500.00	89.68	90.23	7,943.17	-759.35	5,248.40	5,292.03	0.01	0.01	0.00	
13,600.00	89.68	90.23	7,943.73	-759.76	5,348.39	5,391.75	0.01	0.01	0.00	
13,700.00	89.69	90.23	7,944.27	-760.17	5,448.39	5,491.46	0.01	0.01	0.00	
13,800.00	89.70	90.23	7,944.81	-760.57	5,548.39	5,591.18	0.01	0.01	0.00	
13,900.00	89.70	90.23	7,945.33	-760.98	5,648.39	5,690.90	0.01	0.01	0.00	
14,000.00	89.71	90.23	7,945.85	-761.38	5,748.38	5,790.61	0.01	0.01	0.00	
14,100.00	89.71	90.23	7,946.35	-761.79	5,848.38	5,890.33	0.01	0.01	0.00	
14,200.00	89.72	90.23	7,946.85	-762.19	5,948.38	5,990.05	0.01	0.01	0.00	
14,300.00	89.73	90.23	7,947.33	-762.60	6,048.38	6,089.76	0.01	0.01	0.00	
14,400.00	89.73	90.23	7,947.80	-763.01	6,148.38	6,189.48	0.01	0.01	0.00	
14,500.00	89.74	90.23	7,948.27	-763.41	6,248.37	6,289.19	0.01	0.01	0.00	
14,600.00	89.74	90.23	7,948.72	-763.82	6,348.37	6,388.91	0.01	0.01	0.00	
14,700.00	89.75	90.23	7,949.16	-764.22	6,448.37	6,488.63	0.01	0.01	0.00	
14,800.00	89.76	90.23	7,949.59	-764.63	6,548.37	6,588.34	0.01	0.01	0.00	
14,900.00	89.76	90.23	7,950.02	-765.03	6,648.37	6,688.06	0.01	0.01	0.00	
15,000.00	89.77	90.23	7,950.43	-765.44	6,748.37	6,787.78	0.01	0.01	0.00	
15,100.00	89.77	90.23	7,950.83	-765.85	6,848.36	6,887.49	0.01	0.01	0.00	
15,200.00	89.78	90.23	7,951.22	-766.25	6,948.36	6,987.21	0.01	0.01	0.00	
15,300.00	89.79	90.23	7,951.60	-766.66	7,048.36	7,086.93	0.01	0.01	0.00	
15,400.00	89.79	90.23	7,951.97	-767.06	7,148.36	7,186.65	0.01	0.01	0.00	
15,500.00	89.80	90.23	7,952.33	-767.47	7,248.36	7,286.36	0.01	0.01	0.00	
15,600.00	89.80	90.23	7,952.68	-767.87	7,348.36	7,386.08	0.01	0.01	0.00	

Oxy Planning Report

Database:	HOPSP	Local Co-ordinate Reference:	Well Turkey Track 4-3 State 22H
Company:	ENGINEERING DESIGNS	TVD Reference:	Datum @ 3435.40ft
Project:	PRD NM DIRECTIONAL PLANS (NAD 1983)	MD Reference:	Datum @ 3435.40ft
Site:	Turkey Track 4-3 State	North Reference:	Grid
Well:	Turkey Track 4-3 State 22H	Survey Calculation Method:	Minimum Curvature
Wellbore:	WB00		
Design:	Permitting Plan		

Planned Survey										
Measured Depth (ft)	Inclination (°)	Azimuth (°)	Vertical Depth (ft)	+N/S (ft)	+E/W (ft)	Vertical Section (ft)	Dogleg Rate (°/100ft)	Build Rate (°/100ft)	Turn Rate (°/100ft)	
15,700.00	89.81	90.23	7,953.02	-768.28	7,448.35	7,485.80	0.01	0.01	0.00	
15,800.00	89.81	90.23	7,953.34	-768.69	7,548.35	7,585.51	0.01	0.01	0.00	
15,900.00	89.82	90.23	7,953.66	-769.09	7,648.35	7,685.23	0.01	0.01	0.00	
16,000.00	89.83	90.23	7,953.97	-769.50	7,748.35	7,784.95	0.01	0.01	0.00	
16,100.00	89.83	90.23	7,954.27	-769.90	7,848.35	7,884.66	0.01	0.01	0.00	
16,200.00	89.84	90.23	7,954.56	-770.31	7,948.35	7,984.38	0.01	0.01	0.00	
16,300.00	89.84	90.23	7,954.83	-770.72	8,048.35	8,084.10	0.01	0.01	0.00	
16,400.00	89.85	90.23	7,955.10	-771.12	8,148.35	8,183.82	0.01	0.01	0.00	
16,500.00	89.86	90.23	7,955.35	-771.53	8,248.34	8,283.53	0.01	0.01	0.00	
16,600.00	89.86	90.23	7,955.60	-771.93	8,348.34	8,383.25	0.01	0.01	0.00	
16,700.00	89.87	90.23	7,955.84	-772.34	8,448.34	8,482.97	0.01	0.01	0.00	
16,800.00	89.87	90.23	7,956.06	-772.74	8,548.34	8,582.69	0.01	0.01	0.00	
16,900.00	89.88	90.23	7,956.28	-773.15	8,648.34	8,682.40	0.01	0.01	0.00	
17,000.00	89.89	90.23	7,956.48	-773.56	8,748.34	8,782.12	0.01	0.01	0.00	
17,100.00	89.89	90.23	7,956.67	-773.96	8,848.34	8,881.84	0.01	0.01	0.00	
17,200.00	89.90	90.23	7,956.86	-774.37	8,948.34	8,981.56	0.01	0.01	0.00	
17,300.00	89.90	90.23	7,957.03	-774.77	9,048.34	9,081.27	0.01	0.01	0.00	
17,400.00	89.91	90.23	7,957.19	-775.18	9,148.34	9,180.99	0.01	0.01	0.00	
17,500.00	89.92	90.23	7,957.35	-775.58	9,248.33	9,280.71	0.01	0.01	0.00	
17,600.00	89.92	90.23	7,957.49	-775.99	9,348.33	9,380.42	0.01	0.01	0.00	
17,700.00	89.93	90.23	7,957.62	-776.40	9,448.33	9,480.14	0.01	0.01	0.00	
17,800.00	89.93	90.23	7,957.74	-776.80	9,548.33	9,579.86	0.01	0.01	0.00	
17,900.00	89.94	90.23	7,957.85	-777.21	9,648.33	9,679.58	0.01	0.01	0.00	
18,000.00	89.95	90.23	7,957.96	-777.61	9,748.33	9,779.30	0.01	0.01	0.00	
18,047.85	89.95	90.23	7,958.00	-777.81	9,796.18	9,827.01	0.01	0.01	0.00	

Design Targets										
Target Name	hit/miss target Shape	Dip Angle (°)	Dip Dir. (°)	TVD (ft)	+N/S (ft)	+E/W (ft)	Northing (usft)	Easting (usft)	Latitude	Longitude
TT_4-3_State_22H_K	- plan hits target center - Point	0.00	0.00	7,327.04	-735.94	-521.14	615,540.61	616,765.57	32° 41' 30.928928 N	104° 5' 17.335676
TT_4-3_State_22H_B	- plan hits target center - Point	0.00	0.00	7,958.00	-777.81	9,796.18	615,498.75	627,082.00	32° 41' 30.262629 N	104° 3' 16.614567

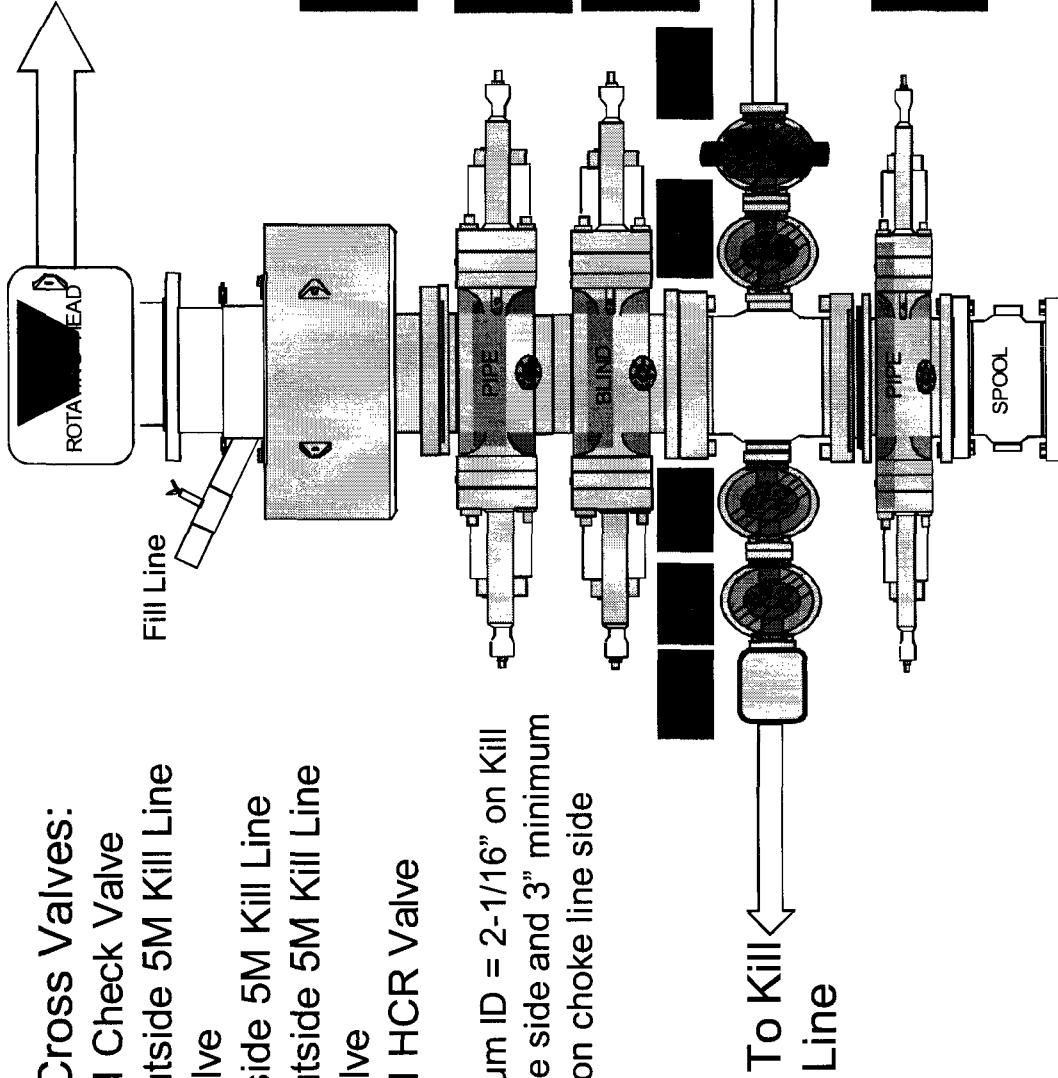
Plan Annotations					
Measured Depth (ft)	Vertical Depth (ft)	Local Coordinates		Comment	
		+N/S (ft)	+E/W (ft)		
1,698.00	1,698.00	0.00	0.00	STEP OUT DLS 2.00	
2,196.57	2,194.06	-35.32	-25.01	HOLD 10 DEG TANGENT	
6,904.61	6,830.98	-700.63	-496.14	DROP BACK TO VERTICAL DLS 2.00	
7,403.18	7,327.04	-735.94	-521.14	BUILD CURVE 10 DEG / 100	
8,296.88	7,899.96	-738.24	45.51	LANDING POINT	
18,047.85	7,958.00	-777.81	9,796.18	TD at 18047.85	

5M BOP Stack

Mud Cross Valves:

5. 5M Check Valve
6. Outside 5M Kill Line Valve
7. Inside 5M Kill Line Valve
8. Outside 5M Kill Line Valve
9. 5M HCR Valve

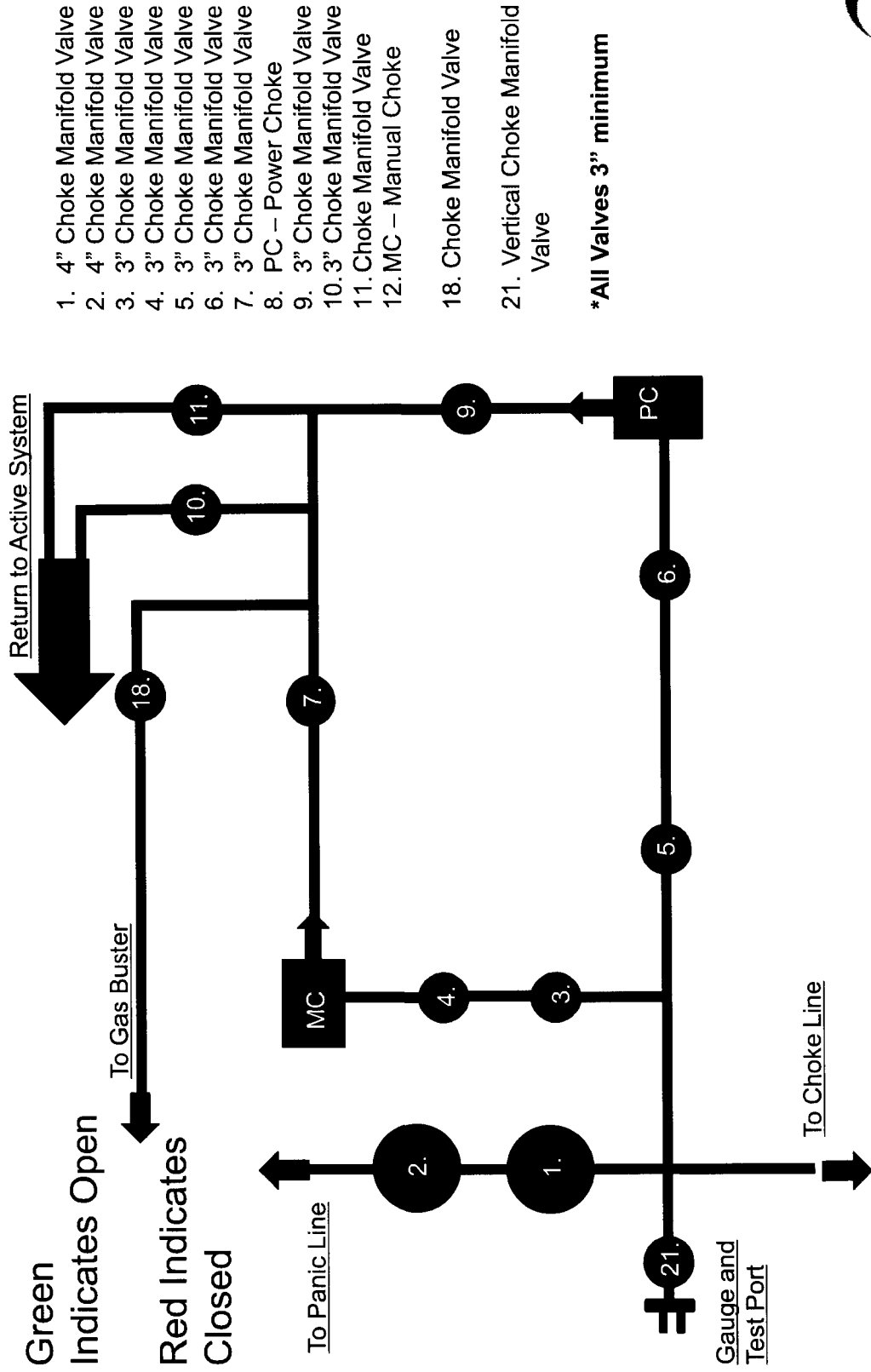
*Minimum ID = 2-1/16" on Kill Line side and 3" minimum ID on choke line side



NIM OIL CONSERVATION
 ARTESIA DISTRICT
 SEP 26 2017
 RECEIVED



5M Choke Panel



Green Indicates Open
 Red Indicates Closed

1. 4" Choke Manifold Valve
2. 4" Choke Manifold Valve
3. 3" Choke Manifold Valve
4. 3" Choke Manifold Valve
5. 3" Choke Manifold Valve
6. 3" Choke Manifold Valve
7. 3" Choke Manifold Valve
8. PC – Power Choke
9. 3" Choke Manifold Valve
10. 3" Choke Manifold Valve
11. Choke Manifold Valve
12. MC – Manual Choke
18. Choke Manifold Valve
21. Vertical Choke Manifold Valve

*All Valves 3" minimum





NM OIL CONSERVATION
ARTESIA DISTRICT
SEP 26 2017
RECEIVED

Permian Drilling Hydrogen Sulfide Drilling Operations Plan Turkey Track 4-3 State 22H

Open drill site. No homes or buildings are near the proposed location.

1. Escape

Personnel shall escape upwind of wellbore in the event of an emergency gas release. Escape can take place through the lease road on the Southeast side of the location. Personnel need to move to a safe distance and block the entrance to location. If the primary route is not an option due to the wind direction, then a secondary egress route should be taken.

▲ H2S Detectors. At least three detectors will be installed: bell nipple, rig floor and Shakers.

● Briefing Areas. At least two briefing areas will be placed, 90 deg off.

■ Wind direction indicators. Visible from rig floor and from the mud pits area.

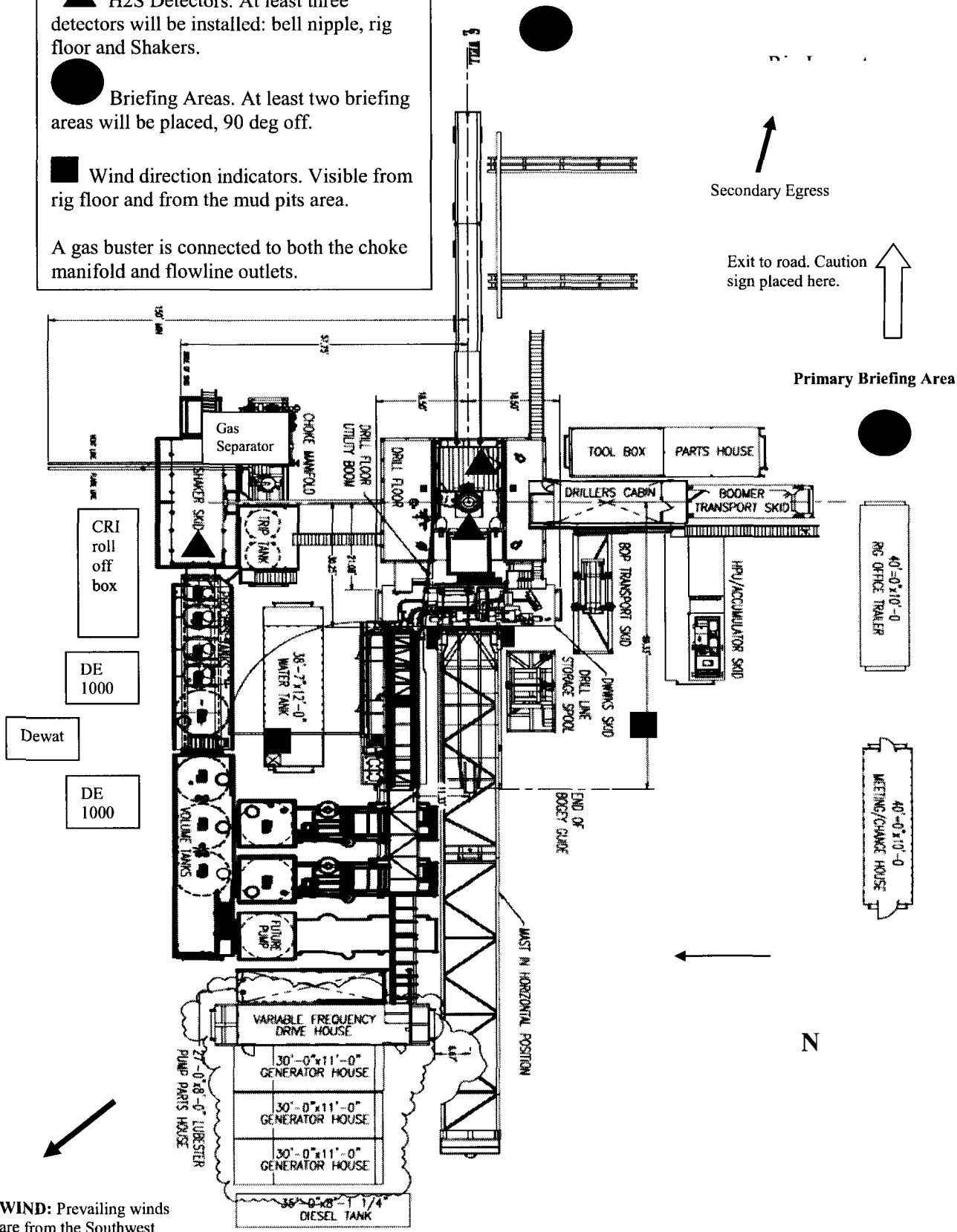
A gas buster is connected to both the choke manifold and flowline outlets.

Secondary Briefing Area

Secondary Egress

Exit to road. Caution sign placed here.

Primary Briefing Area



WIND: Prevailing winds are from the Southwest



Permian Drilling Hydrogen Sulfide Drilling Operations Plan New Mexico

Scope

This contingency plan establishes guidelines for the public, all company employees, and contract employees who's work activities may involve exposure to hydrogen sulfide (H₂S) gas.

While drilling this well, it is possible to encounter H₂S bearing formations. At all times, the first barrier to control H₂S emissions will be the drilling fluid, which will have a density high enough to control influx.

Objective

1. Provide an immediate and predetermined response plan to any condition when H₂S is detected. All H₂S detections in excess of 10 parts per million (ppm) concentration are considered an Emergency.
2. Prevent any and all accidents, and prevent the uncontrolled release of hydrogen sulfide into the atmosphere.
3. Provide proper evacuation procedures to cope with emergencies.
4. Provide immediate and adequate medical attention should an injury occur.

Discussion

Implementation:	This plan with all details is to be fully implemented before drilling to <u>commence</u> .
Emergency response Procedure:	This section outlines the conditions and denotes steps to be taken in the event of an emergency.
Emergency equipment Procedure:	This section outlines the safety and emergency equipment that will be required for the drilling of this well.
Training provisions:	This section outlines the training provisions that must be adhered to prior to drilling.
Drilling emergency call lists:	Included are the telephone numbers of all persons to be contacted should an emergency exist.
Briefing:	This section deals with the briefing of all people involved in the drilling operation.
Public safety:	Public safety personnel will be made aware of any potential evacuation and any additional support needed.
Check lists:	Status check lists and procedural check lists have been included to insure adherence to the plan.
General information:	A general information section has been included to supply support information.

Hydrogen Sulfide Training

All personnel, whether regularly assigned, contracted, or employed on an unscheduled basis, will receive training from a qualified instructor in the following areas prior to commencing drilling operations on the well:

1. The hazards and characteristics of H₂S.
2. Proper use and maintenance of personal protective equipment and life support systems.
3. H₂S detection.
4. Proper use of H₂S detectors, alarms, warning systems, briefing areas, evacuation procedures and prevailing winds.
5. Proper techniques for first aid and rescue procedures.
6. Physical effects of hydrogen sulfide on the human body.
7. Toxicity of hydrogen sulfide and sulfur dioxide.
8. Use of SCBA and supplied air equipment.
9. First aid and artificial respiration.
10. Emergency rescue.

In addition, supervisory personnel will be trained in the following areas:

1. The effects of H₂S on metal components. If high tensile strength tubular is to be used, personnel will be trained in their special maintenance requirements.
2. Corrective action and shut-in procedures when drilling a well, blowout prevention and well control procedures.
3. The contents and requirements of the H₂S Drilling Operations Plan.

H₂S training refresher must have been taken within one year prior to drilling the well. Specifics on the well to be drilled will be discussed during the pre-spud meeting. H₂S and well control (choke) drills will be performed while drilling the well, at least on a weekly basis. This plan shall be available in the well site. All personnel will be required to carry the documentation proving that the H₂S training has been taken.

Service company and visiting personnel

- A. Each service company that will be on this well will be notified if the zone contains H₂S.
- B. Each service company must provide for the training and equipment of their employees before they arrive at the well site.
- C. Each service company will be expected to attend a well site briefing

Emergency Equipment Requirements

1. Well control equipment

The well shall have hydraulic BOP equipment for the anticipated pressures. Equipment is to be tested on installation and follow Oxy Well Control standard, as well as BLM Onshore Order #2.

Special control equipment:

- A. Hydraulic BOP equipment with remote control on ground. Remotely operated choke.
- B. Rotating head
- C. Gas buster equipment shall be installed before drilling out of surface pipe.

2. Protective equipment for personnel

- A. Four (4) 30-minute positive pressure air packs (2 at each briefing area) on location.
- B. Adequate fire extinguishers shall be located at strategic locations.
- C. Radio / cell telephone communication will be available at the rig.
 - Rig floor and trailers.
 - Vehicle.

3. Hydrogen sulfide sensors and alarms

- A. H₂S sensor with alarms will be located on the rig floor, at the bell nipple, and at the flow line. These monitors will be set to alarm at 10 ppm with strobe light, and audible alarm.
- B. Hand operated detectors with tubes.
- C. H₂S monitor tester (to be provided by contract Safety Company.)
- D. There shall be one combustible gas detector on location at all times.

4. Visual Warning Systems

- A. One sign located at each location entrance with the following language:

**Caution – potential poison gas
Hydrogen sulfide
No admittance without authorization**

Wind sock – wind streamers:

- A. One 36” (in length) wind sock located at protection center, at height visible from rig floor.
- B. One 36” (in length) wind sock located at height visible from pit areas.

Condition flags

- A. One each condition flag to be displayed to denote conditions.

green – normal conditions
yellow – potential danger
red – danger, H2S present

- B. Condition flag shall be posted at each location sign entrance.

5. Mud Program

The mud program is designed to minimize the risk of having H2S and other formation fluids at surface. Proper mud weight and safe drilling practices will be applied. H2S scavengers will be used to minimize the hazards while drilling. Below is a summary of the drilling program.

Mud inspection devices:

Garrett gas train or hatch tester for inspection of sulfide concentration in mud system.

6. Metallurgy

- A. Drill string, casing, tubing, wellhead, blowout preventers, drilling spools or adapters, kill lines, choke manifold, lines and valves shall be suitable for the H2S service.
- B. All the elastomers, packing, seals and ring gaskets shall be suitable for H2S service.

7. Well Testing

No drill stem test will be performed on this well.

8. Evacuation plan

Evacuation routes should be established prior to well spud for each well and discussed with all rig personnel.

9. Designated area

- A. Parking and visitor area: all vehicles are to be parked at a predetermined safe distance from the wellhead.
- B. There will be a designated smoking area.
- C. Two briefing areas on either side of the location at the maximum allowable distance from the well bore so they offset prevailing winds perpendicularly, or at a 45-degree angle if wind direction tends to shift in the area.

Emergency procedures

- A. In the event of any evidence of H₂S level above 10 ppm, take the following steps:
 - 1. The Driller will pick up off bottom, shut down the pumps, slow down the pipe rotation.
 - 2. Secure and don escape breathing equipment, report to the upwind designated safe briefing / muster area.
 - 3. All personnel on location will be accounted for and emergency search should begin for any missing, the Buddy System will be implemented.
 - 4. Order non-essential personnel to leave the well site, order all essential personnel out of the danger zone and upwind to the nearest designated safe briefing / muster area.
 - 5. Entrance to the location will be secured to a higher level than our usual "Meet and Greet" requirement, and the proper condition flag will be displayed at the entrance to the location.
 - 6. Take steps to determine if the H₂S level can be corrected or suppressed and, if so, proceed as required.
- B. If uncontrollable conditions occur:
 - 1. Take steps to protect and/or remove any public in the down-wind area from the rig – partial evacuation and isolation. Notify necessary public safety personnel and appropriate regulatory entities (i.e. BLM) of the situation.

2. Remove all personnel to the nearest upwind designated safe briefing / muster area or off location.
3. Notify public safety personnel of safe briefing / muster area.
4. An assigned crew member will blockade the entrance to the location. No unauthorized personnel will be allowed entry to the location.
5. Proceed with best plan (at the time) to regain control of the well. Maintain tight security and safety procedures.

C. Responsibility:

1. Designated personnel.
 - a. Shall be responsible for the total implementation of this plan.
 - b. Shall be in complete command during any emergency.
 - c. Shall designate a back-up.

- All personnel:
1. On alarm, don escape unit and report to the nearest upwind designated safe briefing / muster area upw
 2. Check status of personnel (buddy system).
 3. Secure breathing equipment.
 4. Await orders from supervisor.

- Drill site manager:
1. Don escape unit if necessary and report to nearest upwind designated safe briefing / muster area.
 2. Coordinate preparations of individuals to return to point of release with tool pusher and driller (using the buddy system).
 3. Determine H2S concentrations.
 4. Assess situation and take control measures.

- Tool pusher:
1. Don escape unit Report to up nearest upwind designated safe briefing / muster area.
 2. Coordinate preparation of individuals to return to point of release with tool pusher drill site manager (using the buddy system).
 3. Determine H2S concentration.
 4. Assess situation and take control measures.

- Driller:
1. Don escape unit, shut down pumps, continue

- rotating DP.
 - 2. Check monitor for point of release.
 - 3. Report to nearest upwind designated safe briefing / muster area.
 - 4. Check status of personnel (in an attempt to rescue, use the buddy system).
 - 5. Assigns least essential person to notify Drill Site Manager and tool pusher by quickest means in case of their absence.
 - 6. Assumes the responsibilities of the Drill Site Manager and tool pusher until they arrive should they be absent.
- Derrick man
Floor man #1
Floor man #2
- 1. Will remain in briefing / muster area until instructed by supervisor.
- Mud engineer:
- 1. Report to nearest upwind designated safe briefing / muster area.
 - 2. When instructed, begin check of mud for ph and H2S level. (Garett gas train.)
- Safety personnel:
- 1. Mask up and check status of all personnel and secure operations as instructed by drill site manager.

Taking a kick

When taking a kick during an H2S emergency, all personnel will follow standard Well control procedures after reporting to briefing area and masking up.

Open-hole logging

All unnecessary personnel off floor. Drill Site Manager and safety personnel should monitor condition, advise status and determine need for use of air equipment.

Running casing or plugging

Following the same “tripping” procedure as above. Drill Site Manager and safety personnel should determine if all personnel have access to protective equipment.

Ignition procedures

The decision to ignite the well is the responsibility of the operator (Oxy Drilling Management). The decision should be made only as a last resort and in a situation where it is clear that:

1. Human life and property are endangered.
2. There is no hope controlling the blowout under the prevailing conditions at the well.

Instructions for igniting the well

1. Two people are required for the actual igniting operation. They must wear self-contained breathing units and have a safety rope attached. One man (tool pusher or safety engineer) will check the atmosphere for explosive gases with the gas monitor. The other man is responsible for igniting the well.
2. Primary method to ignite: 25 mm flare gun with range of approximately 500 feet.
3. Ignite upwind and do not approach any closer than is warranted.
4. Select the ignition site best for protection, and which offers an easy escape route.
5. Before firing, check for presence of combustible gas.
6. After lighting, continue emergency action and procedure as before.
7. All unassigned personnel will remain in briefing area until instructed by supervisor or directed by the Drill Site Manager.

Remember: After well is ignited, burning hydrogen sulfide will convert to sulfur dioxide, which is also highly toxic. **Do not assume the area is safe after the well is ignited.**

Status check list

Note: All items on this list must be completed before drilling to production casing point.

1. H2S sign at location entrance.
2. Two (2) wind socks located as required.
3. Four (4) 30-minute positive pressure air packs (2 at each Briefing area) on location for all rig personnel and mud loggers.
4. Air packs inspected and ready for use.
5. Cascade system and hose line hook-up as needed.
6. Cascade system for refilling air bottles as needed.
7. Condition flag on location and ready for use.
8. H2S detection system hooked up and tested.
9. H2S alarm system hooked up and tested.
10. Hand operated H2S detector with tubes on location.
11. 1 – 100' length of nylon rope on location.
12. All rig crew and supervisors trained as required.
13. All outside service contractors advised of potential H2S hazard on well.
14. No smoking sign posted and a designated smoking area identified.
15. Calibration of all H2S equipment shall be noted on the IADC report.

Checked by: _____ Date: _____

Procedural check list during H2S events

Perform each tour:

1. Check fire extinguishers to see that they have the proper charge.
2. Check breathing equipment to ensure that it is in proper working order.
3. Make sure all the H2S detection system is operative.

Perform each week:

1. Check each piece of breathing equipment to make sure that demand or forced air regulator is working. This requires that the bottle be opened and the mask assembly be put on tight enough so that when you inhale, you receive air or feel air flow.
2. BOP skills (well control drills).
3. Check supply pressure on BOP accumulator stand by source.
4. Check breathing equipment mask assembly to see that straps are loosened and turned back, ready to put on.
5. Check pressure on breathing equipment air bottles to make sure they are charged to full volume. (Air quality checked for proper air grade "D" before bringing to location)
6. Confirm pressure on all supply air bottles.
7. Perform breathing equipment drills with on-site personnel.
8. Check the following supplies for availability.
 - A. Emergency telephone list.
 - B. Hand operated H2S detectors and tubes.

General evacuation plan

1. When the company approved supervisor (Drill Site Manager, consultant, rig pusher, or driller) determines the H2S gas cannot be limited to the well location and the public will be involved, he will activate the evacuation plan.
2. Drill Site Manager or designee will notify local government agency that a hazardous condition exists and evacuation needs to be implemented.
3. Company or contractor safety personnel that have been trained in the use of H2S detection equipment and self-contained breathing equipment will monitor H2S concentrations, wind directions, and area of exposure. They will delineate the outer perimeter of the hazardous gas area. Extension to the evacuation area will be determined from information gathered.
4. Law enforcement personnel (state police, police dept., fire dept., and sheriff's dept.) Will be called to aid in setting up and maintaining road blocks. Also, they will aid in evacuation of the public if necessary.
5. After the discharge of gas has been controlled, company safety personnel will determine when the area is safe for re-entry.

Important: Law enforcement personnel will not be asked to come into a contaminated area. Their assistance will be limited to uncontaminated areas. Constant radio contact will be maintained with them.

Emergency actions

Well blowout – if emergency

1. Evacuate all personnel to “Safe Briefing / Muster Areas” or off location if needed.
2. If sour gas – evacuate rig personnel.
3. If sour gas – evacuate public within 3000 ft radius of exposure.
4. Don SCBA and shut well in if possible using the buddy system.
5. Notify Drilling Superintendent and call 911 for emergency help (fire dept and ambulance) if needed.
6. Implement the Blowout Contingency Plan, and Drilling Emergency Action Plan.
6. Give first aid as needed.

Person down location/facility

1. If immediately possible, contact 911. Give location and wait for confirmation.
2. Don SCBA and perform rescue operation using buddy system.

Toxic effects of hydrogen sulfide

Hydrogen sulfide is extremely toxic. The acceptable ceiling concentration for eight-hour exposure is 10 ppm, which is .001% by volume. Hydrogen sulfide is heavier than air (specific gravity – 1.192) and colorless. It forms an explosive mixture with air between 4.3 and 46.0 percent by volume. Hydrogen sulfide is almost as toxic as hydrogen cyanide and is between five and six times more toxic than carbon monoxide. Toxicity data for hydrogen sulfide and various other gases are compared in table i. Physical effects at various hydrogen sulfide exposure levels are shown in table ii.

Table i
Toxicity of various gases

Common name	Chemical formula	Specific gravity (sc=1)	Threshold limit (1)	Hazardous limit (2)	Lethal concentration (3)
Hydrogen Cyanide	Hcn	0.94	10 ppm	150 ppm/hr	300 ppm
Hydrogen Sulfide	H2S	1.18	10 ppm	250 ppm/hr	600 ppm
Sulfur Dioxide	So2	2.21	5 ppm	-	1000 ppm
Chlorine	Cl2	2.45	1 ppm	4 ppm/hr	1000 ppm
Carbon Monoxide	Co	0.97	50 ppm	400 ppm/hr	1000 ppm
Carbon Dioxide	Co2	1.52	5000 ppm	5%	10%
Methane	Ch4	0.55	90,000 ppm	Combustible above 5% in air	

- 1) threshold limit – concentration at which it is believed that all workers may be repeatedly exposed day after day without adverse effects.
- 2) hazardous limit – concentration that will cause death with short-term exposure.
- 3) lethal concentration – concentration that will cause death with short-term exposure.

Toxic effects of hydrogen sulfide

Table ii
Physical effects of hydrogen sulfide

<u>Percent (%)</u>	<u>Ppm</u>	<u>Concentration</u> Grains 100 std. Ft3*	<u>Physical effects</u>
0.001	<10	0.65	Obvious and unpleasant odor.

0.002	10	01.30	Safe for 8 hours of exposure.
0.010	100	06.48	Kill smell in 3 – 15 minutes. May sting eyes and throat.
0.020	200	12.96	Kills smell shortly; stings eyes and throat.
0.050	500	32.96	Dizziness; breathing ceases in a few minutes; needs prompt artificial respiration.
0.070	700	45.36	Unconscious quickly; death will result if not rescued promptly.
0.100	1000	64.30	Unconscious at once; followed by death within minutes.

*at 15.00 psia and 60'f.

Use of self-contained breathing equipment (SCBA)

1. Written procedures shall be prepared covering safe use of SCBA's in dangerous atmosphere, which might be encountered in normal operations or in emergencies. Personnel shall be familiar with these procedures and the available SCBA.
2. SCBA's shall be inspected frequently at random to insure that they are properly used, cleaned, and maintained.
3. Anyone who may use the SCBA's shall be trained in how to insure proper face-piece to face seal. They shall wear SCBA's in normal air and then wear them in a test atmosphere. (note: such items as facial hair {beard or sideburns} and eyeglasses will not allow proper seal.) Anyone that may be reasonably expected to wear SCBA's should have these items removed before entering a toxic atmosphere. A special mask must be obtained for anyone who must wear eyeglasses or contact lenses.
4. Maintenance and care of SCBA's:
 - a. A program for maintenance and care of SCBA's shall include the following:
 1. Inspection for defects, including leak checks.
 2. Cleaning and disinfecting.
 3. Repair.
 4. Storage.
 - b. Inspection, self-contained breathing apparatus for emergency use shall be inspected monthly.
 1. Fully charged cylinders.
 2. Regulator and warning device operation.
 3. Condition of face piece and connections.
 4. Rubber parts shall be maintained to keep them pliable and prevent deterioration.
 - c. Routinely used SCBA's shall be collected, cleaned and disinfected as frequently as necessary to insure proper protection is provided.
5. Persons assigned tasks that requires use of self-contained breathing equipment shall be certified physically fit (medically cleared) for breathing equipment usage at least annually.
6. SCBA's should be worn when:
 - A. Any employee works near the top or on top of any tank unless test reveals less than 10 ppm of H₂S.

- B. When breaking out any line where H₂S can reasonably be expected.
- C. When sampling air in areas to determine if toxic concentrations of H₂S exists.
- D. When working in areas where over 10 ppm H₂S has been detected.
- E. At any time there is a doubt as to the H₂S level in the area to be entered.

Rescue
First aid for H₂S poisoning

Do not panic!

Remain calm – think!

1. Don SCBA breathing equipment.
2. Remove victim(s) utilizing buddy system to fresh air as quickly as possible. (go up-wind from source or at right angle to the wind. Not down wind.)
3. Briefly apply chest pressure – arm lift method of artificial respiration to clean the victim's lungs and to avoid inhaling any toxic gas directly from the victim's lungs.
4. Provide for prompt transportation to the hospital, and continue giving artificial respiration if needed.
5. Hospital(s) or medical facilities need to be informed, before-hand, of the possibility of H₂S gas poisoning – no matter how remote the possibility is.
6. Notify emergency room personnel that the victim(s) has been exposed to H₂S gas.

Besides basic first aid, everyone on location should have a good working knowledge of artificial respiration.

Revised CM 6/27/2012

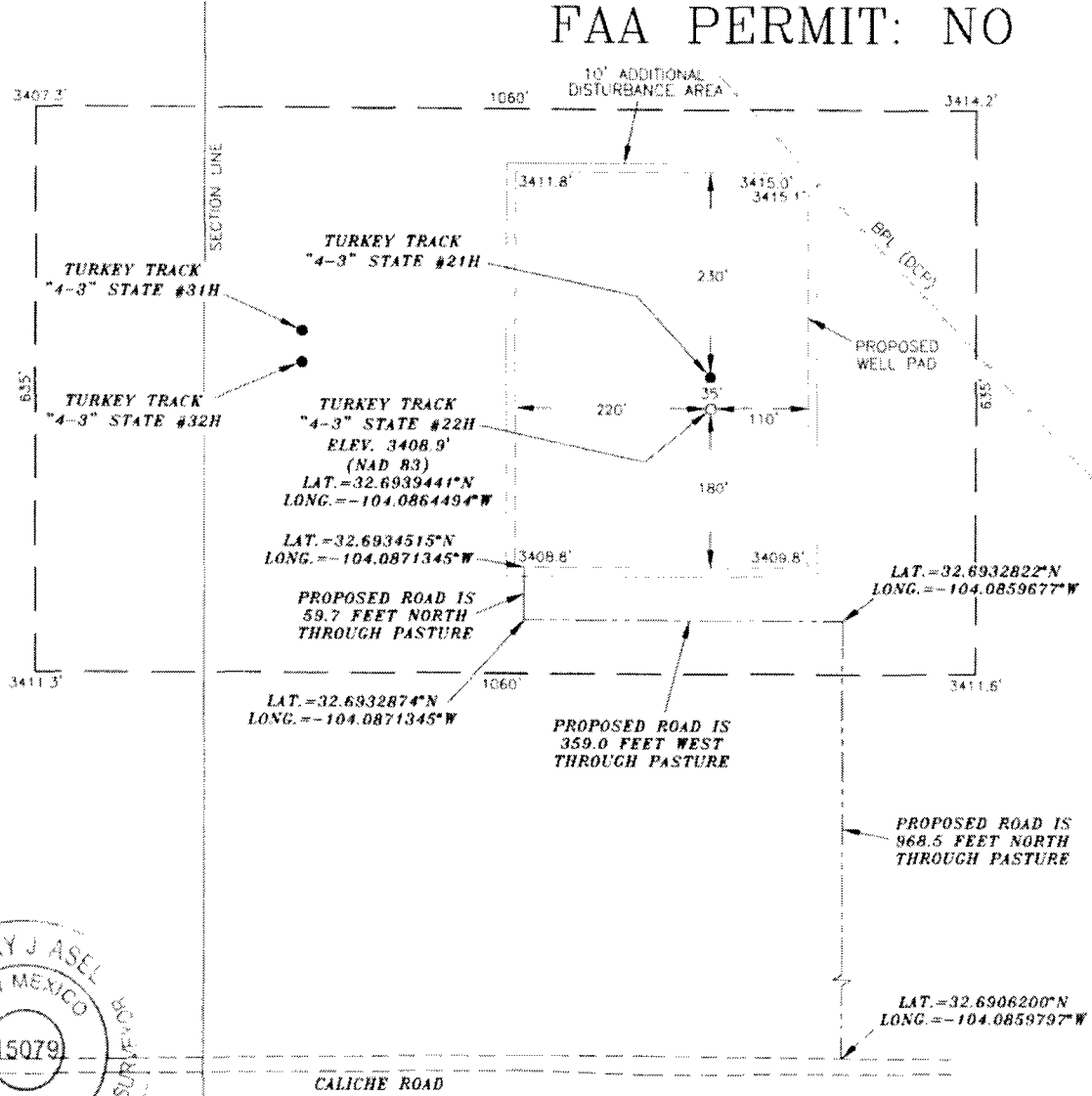
OXY USA INC. TURKEY TRACK "4-3" STATE #22H SITE PLAN

ARTESIA DISTRICT

SEP 26 2017

RECEIVED

FAA PERMIT: NO



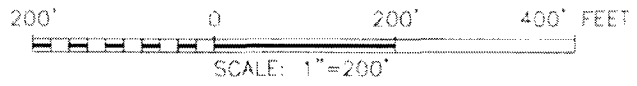
LEGEND

- DENOTES PROPOSED WELL PAD
- - - DENOTES PROPOSED ROAD

SURVEYORS CERTIFICATE

I, TERRY J. ASEL, NEW MEXICO PROFESSIONAL SURVEYOR NO. 15079, DO HEREBY CERTIFY THAT I CONDUCTED AND AM RESPONSIBLE FOR THIS SURVEY, THAT THIS SURVEY IS TRUE AND CORRECT TO THE BEST OF MY KNOWLEDGE AND BELIEF, AND MEETS THE "MINIMUM STANDARDS FOR SURVEYING IN NEW MEXICO" AS ADOPTED BY THE NEW MEXICO STATE BOARD OF REGISTRATION FOR PROFESSIONAL ENGINEERS AND SURVEYORS.

Terry J. Asel 7/28/2017
Terry J. Asel N.M. R.P.L.S. No. 15079



Asel Surveying

P.O. BOX 393 - 310 W. TAYLOR
HOBBS, NEW MEXICO - 575-393-9146



OXY USA INC.

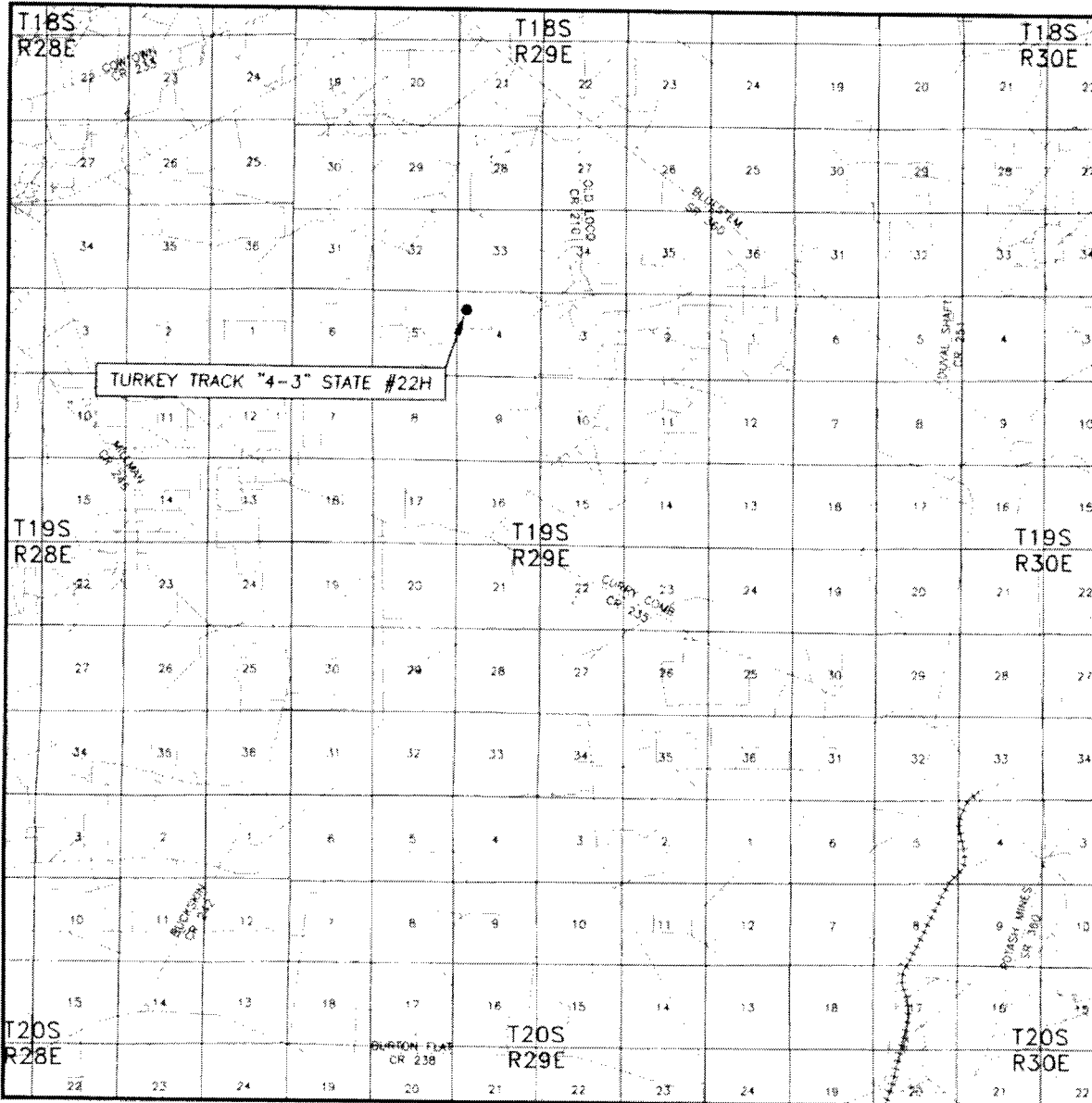
TURKEY TRACK "4-3" STATE #22H LOCATED AT 1156' FNL & 570' FWL IN SECTION 4, TOWNSHIP 19 SOUTH, RANGE 29 EAST, N.M.P.M., EDDY COUNTY, NEW MEXICO

Survey Date: 07/05/17	Sheet 1 of 1 Sheets
W.O. Number: 170705WL-b	Drawn By: KA Rev:
Date: 07/27/17	170705WL-b Scale: 1"=200'

SEP 26 2017

RECEIVED

VICINITY MAP

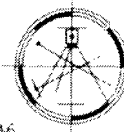


SEC. 4 TWP. 19-S RGE. 29-E
 SURVEY N.M.P.M.
 COUNTY EDDY
 DESCRIPTION 1156' FNL & 570' FWL
 ELEVATION 3408.9'
 OPERATOR OXY USA INC.

SCALE: 1" = 2 MILES

Asel Surveying

P.O. BOX 393 - 310 W. TAYLOR
 HOBBS, NEW MEXICO - 575-393-9146



LEASE TURKEY TRACK "4-3" STATE #22H

DIRECTIONS FROM THE INTERSECTION OF U.S. HWY. #62/180 AND STATE ROAD #360 (POTASH MINES ROAD),
GO NORTHEASTERLY, NORTHERLY, THEN NORTHWESTERLY ON STATE ROAD #360 FOR 17.1 MILES, TURN LEFT ON
COUNTY ROAD #210 (OLD LOCO ROAD) AND GO SOUTH FOR 2.3 MILES, TURN RIGHT ON CALICHE ROAD AND GO
SOUTHWESTERLY AND WESTERLY FOR 1.7 MILES, TURN RIGHT ON PROPOSED ROAD AND GO NORTH FOR 968.5
FEET, TURN LEFT AND GO WEST FOR 359.0 FEET, TURN RIGHT AND GO NORTH FOR 59.7 FEET TO LOCATION.

OXY USA Inc
APD ATTACHMENT: SPUDDER RIG DATA

NM OIL CONSERVATION
ARTESIA DISTRICT

SEP 26 2017

OPERATOR NAME / NUMBER: OXY USA Inc

RECEIVED

1. SUMMARY OF REQUEST:

Oxy USA respectfully requests approval for the following operations for the surface hole in the drill plan:

1. Utilize a spudder rig to pre-set surface casing for time and cost savings.

2. Description of Operations

1. Spudder rig will move in to drill the surface hole and pre-set surface casing on the well.
 - a. After drilling the surface hole section, the spudder rig will run casing and cement following all of the applicable rules and regulations (OnShore Order 2, all COAs and NMOCD regulations).
 - b. The spudder rig will utilize fresh water-based mud to drill the surface hole to TD. Solids control will be handled entirely on a closed loop basis. No earth pits will be used.
2. The wellhead will be installed and tested as soon as the surface casing is cut off and the WOC time has been reached.
3. A blind flange at the same pressure rating as the wellhead will be installed to seal the wellbore. Pressure will be monitored with needle valves installed on two wingvalves.
 - a. A means for intervention will be maintained while the drilling rig is not over the well.
4. Spudder rig operations are expected to take 2-3 days per well on the pad.
5. The BLM will be contacted and notified 24 hours prior to commencing spudder rig operations.
6. Drilling operations will begin with a larger rig and a BOP stack equal to or greater than the pressure rating that was permitted will be nipped up and tested on the wellhead before drilling operations resume on each well.
 - a. The larger rig will move back onto the location within 90 days from the point at which the wells are secured and the spudder rig is moved off location.
 - b. The BLM will be contacted / notified 24 hours before the larger rig moves back on the pre-set locations.
7. Oxy will have supervision on the rig to ensure compliance with all BLM and NMOCD regulations and to oversee operations.
8. Once the rig is removed, Oxy will secure the wellhead area by placing a guard rail around the cellar area.

SEP 26 2017

RECEIVED

Spudder Rig Layout

