

UNITED STATES
DEPARTMENT OF THE INTERIOR
BUREAU OF LAND MANAGEMENT

APPLICATION FOR PERMIT TO DRILL OR REENTER

FORM APPROVED
OMB No. 1004-0137
Expires October 31, 2014

5. Lease Serial No.
NMLC 061497

6. If Indian, Allottee or Tribe Name

7. If Unit or CA Agreement, Name and No.

8. Lease Name and Well No.
FULLER 13/12 B2ED FED COM 1H 319621

9. API Well No.

30-015-44447
BRUSHY DRAW WOLF CAMP GAS / WC

11. Sec., T. R. M. or Blk. and Survey or Area
SEC 13 / T26S / R29E / NMP

12. County or Parish
EDDY

13. State
NM

1a. Type of work: ☒ DRILL ☐ REENTER

1b. Type of Well: ☐ Oil Well ☒ Gas Well ☐ Other ☐ Single Zone ☒ Multiple Zone

2. Name of Operator
MEWBOURNE OIL COMPANY

3a. Address
PO Box 5270 Hobbs NM 88240

3b. Phone No. (include area code)
14744
(575)393-5905

4. Location of Well (Report location clearly and in accordance with any State requirements.)*
At surface NWSW / 2620 FSL / 500 FWL / LAT 32.0417456 / LONG -103.9439397
At proposed prod. zone NWNW / 330 FNL / 660 FWL / LAT 32.06325 / LONG -103.9433455

14. Distance in miles and direction from nearest town or post office*
25 miles

15. Distance from proposed*
location to nearest 330 feet
property or lease line, ft.
(Also to nearest drig. unit line, if any)

16. No. of acres in lease
640

17. Spacing Unit dedicated to this well
480

18. Distance from proposed location*
to nearest well, drilling, completed, 50 feet
applied for, on this lease, ft.

19. Proposed Depth
8924 feet / 16539 feet

20. BLM/BIA Bond No. on file
FED: NM1693

21. Elevations (Show whether DF, KDB, RT, GL, etc.)
2959 feet

22. Approximate date work will start*
03/07/2017

23. Estimated duration
60 days

24. Attachments

The following, completed in accordance with the requirements of Onshore Oil and Gas Order No.1, must be attached to this form:

- Well plat certified by a registered surveyor.
- A Drilling Plan.
- A Surface Use Plan (if the location is on National Forest System Lands, the SUPO must be filed with the appropriate Forest Service Office).
- Bond to cover the operations unless covered by an existing bond on file (see Item 20 above).
- Operator certification
- Such other site specific information and/or plans as may be required by the BLM.

25. Signature
(Electronic Submission)

Name (Printed/Typed)
Bradley Bishop / Ph: (575)393-5905

Date
11/22/2016

Title

Regulatory

Approved by (Signature)
(Electronic Submission)

Name (Printed/Typed)
Cody Layton / Ph: (575)234-5959

Date
09/14/2017

Title

Supervisor Multiple Resources

Office
CARLSBAD

Application approval does not warrant or certify that the applicant holds legal or equitable title to those rights in the subject lease which would entitle the applicant to conduct operations thereon.
Conditions of approval, if any, are attached.

Title 18 U.S.C. Section 1001 and Title 43 U.S.C. Section 1212, make it a crime for any person knowingly and willfully to make to any department or agency of the United States any false, fictitious or fraudulent statements or representations as to any matter within its jurisdiction.

(Continued on page 2)

*(Instructions on page 2)

APPROVED WITH CONDITIONS

NSP Required

RWP 9-28-17

**PECOS DISTRICT
DRILLING OPERATIONS
CONDITIONS OF APPROVAL**

OPERATOR'S NAME:	Mewbourne Oil Company
LEASE NO.:	NMLC061497
WELL NAME & NO.:	1H- Fuller 13- 12 B2ED Fed Com
SURFACE HOLE FOOTAGE:	2620'/S & 500'/W
BOTTOM HOLE FOOTAGE:	330'/N & 600'/W, Sec. 12
LOCATION:	Section 13 T.26 S., R.29 E., NMPM
COUNTY:	Eddy County, New Mexico

I. SPECIAL REQUIREMENT(S)

Communitization Agreement

- The operator will submit a Communitization Agreement to the Carlsbad Field Office, 620 E Greene St. Carlsbad, New Mexico 88220, at least 90 days before the anticipated date of first production from a well subject to a spacing order issued by the New Mexico Oil Conservation Division. The Communitization Agreement will include the signatures of all working interest owners in all Federal and Indian leases subject to the Communitization Agreement (i.e., operating rights owners and lessees of record), or certification that the operator has obtained the written signatures of all such owners and will make those signatures available to the BLM immediately upon request.
- If the operator does not comply with this condition of approval, the BLM may take enforcement actions that include, but are not limited to, those specified in 43 CFR 3163.1.
- In addition, the well sign shall include the surface and bottom hole lease numbers. When the Communitization Agreement number is known, it shall also be on the sign.

Waste Minimization Plan (WMP)

In the interest of resource development, submission of additional well gas capture development plan information is deferred but may be required by the BLM Authorized Officer at a later date.

II. DRILLING OPERATIONS REQUIREMENTS

The BLM is to be notified in advance for a representative to witness:

- a. Spudding well (minimum of 24 hours)
- b. Setting and/or Cementing of all casing strings (minimum of 4 hours)
- c. BOPE tests (minimum of 4 hours)

☒ **Eddy County**

Call the Carlsbad Field Office, 620 East Greene St., Carlsbad, NM 88220,

(575) 361-2822

1. **Hydrogen Sulfide (H₂S) monitors shall be installed prior to drilling out the surface shoe. If H₂S is detected in concentrations greater than 100 ppm, the Hydrogen Sulfide area shall meet Onshore Order 6 requirements, which includes equipment and personnel/public protection items. If Hydrogen Sulfide is encountered, provide measured values and formations to the BLM.**
2. Unless the production casing has been run and cemented or the well has been properly plugged, the drilling rig shall not be removed from over the hole without prior approval. **If the drilling rig is removed without approval – an Incident of Non-Compliance will be written and will be a “Major” violation.**
3. Floor controls are required for 3M or Greater systems. These controls will be on the rig floor, unobstructed, readily accessible to the driller and will be operational at all times during drilling and/or completion activities. Rig floor is defined as the area immediately around the rotary table; the area immediately above the substructure on which the draw works is located, this does not include the dog house or stairway area.
4. **The record of the drilling rate along with the GR/N well log run from TD to surface (horizontal well – vertical portion of hole) shall be submitted to the BLM office as well as all other logs run on the borehole 30 days from completion. If available, a digital copy of the logs is to be submitted in addition to the paper copies. The Rustler top and top and bottom of Salt are to be recorded on the Completion Report.**

III. CASING

Changes to the approved APD casing program need prior approval if the items substituted are of lesser grade or different casing size or are Non-API. The Operator can exchange the components of the proposal with that of superior strength (i.e. changing from J-55 to N-80, or from 36# to 40#). Changes to the approved cement program need prior approval if the altered cement plan has less volume or strength or if the changes are substantial (i.e. Multistage tool, ECP, etc.). The initial wellhead installed on the well will remain on the well with spools used as needed.

Centralizers required on surface casing per Onshore Order 2.III.B.1.f.

Wait on cement (WOC) for Water Basin:

After cementing but before commencing any tests, the casing string shall stand cemented under pressure until both of the following conditions have been met: 1) cement reaches a minimum compressive strength of 500 psi at the shoe, 2) until cement has been in place at least 8 hours. WOC time will be recorded in the

driller's log. See individual casing strings for details regarding lead cement slurry requirements.

No pea gravel permitted for remedial or fall back remedial without prior authorization from the BLM engineer.

Medium Cave/Karst

Possibility of water flows in the Salado and Castile.

Possibility of lost circulation in the Red Beds, Rustler, and Delaware.

Abnormal pressures may be encountered within the 3rd Bone Spring Sandstone and Wolfcamp formation.

A. The 13-3/8 inch surface casing shall be set at approximately **605** feet (a minimum of 25 feet into the Rustler Anhydrite and above the salt) and cemented to the surface. **If salt is encountered, set casing at least 25 feet above the salt.**

1. If cement does not circulate to the surface, the appropriate BLM office shall be notified and a temperature survey utilizing an electronic type temperature survey with surface log readout will be used or a cement bond log shall be run to verify the top of the cement. Temperature survey will be run a minimum of six hours after pumping cement and ideally between 8-10 hours after completing the cement job.
2. **Wait on cement (WOC) time for a primary cement job is to include the lead cement slurry.**
3. Wait on cement (WOC) time for a remedial job will be a minimum of 4 hours after bringing cement to surface or 500 pounds compressive strength, whichever is greater.
4. If cement falls back, remedial cementing will be done prior to drilling out that string.

Medium Cave/Karst: If cement does not circulate to surface on the intermediate casing, the cement on the production casing must come to surface.

B. The minimum required fill of cement behind the 9-5/8 inch intermediate casing is:

- ☒ Cement to surface. If cement does not circulate see B.1.a, c-d above. **Wait on cement (WOC) time for a primary cement job is to include the lead cement slurry due to cave/karst. Excess calculates to 17% - Additional cement may be required.**

Centralizers required through the curve and a minimum of one every other joint.

C. The minimum required fill of cement behind the 7 inch production casing is:

- ☒ Cement should tie-back at least 200 feet into previous casing string. Operator shall provide method of verification. **Excess calculates to 24% - Additional cement may be required.**

D. The minimum required fill of cement behind the 4-1/2 inch production Liner is:

- ☒ Cement as proposed by operator. Operator shall provide method of verification. **Excess calculates to 25% - Additional cement may be required.**

E. If hardband drill pipe is rotated inside casing, returns will be monitored for metal. If metal is found in samples, drill pipe will be pulled and rubber protectors which have a larger diameter than the tool joints of the drill pipe will be installed prior to continuing drilling operations.

IV. PRESSURE CONTROL

- A. All blowout preventer (BOP) and related equipment (BOPE) shall comply with well control requirements as described in Onshore Oil and Gas Order No. 2 and API RP 53 Sec. 17.
- B. Variance approved to use flex line from BOP to choke manifold. Check condition of flexible line from BOP to choke manifold, replace if exterior is damaged or if line fails test. Line to be as straight as possible with no hard bends and is to be anchored according to Manufacturer's requirements. The flexible hose can be exchanged with a hose of equal size and equal or greater pressure rating. **Anchor requirements, specification sheet and hydrostatic pressure test certification matching the hose in service, to be onsite for review. These documents shall be posted in the company man's trailer and on the rig floor.** If the BLM inspector questions the straightness of the hose, a BLM engineer will be contacted and will review in the field or via picture supplied by inspector to determine if changes are required (operator shall expect delays if this occurs).
- C. Minimum working pressure of the blowout preventer (BOP) and related equipment (BOPE) required for drilling below the surface casing shoe shall be **3000 (3M) psi**.
- D. The appropriate BLM office shall be notified a minimum of 4 hours in advance for a representative to witness the tests.
1. In a water basin, for all casing strings utilizing slips, these are to be set as soon as the crew and rig are ready and any fallback cement remediation has been done. The casing cut-off and BOP installation can be initiated four hours after installing the slips, which will be approximately six hours after bumping the plug. For those casing strings not using slips, the minimum wait time before cut-off is eight hours after bumping the plug. BOP/BOPE testing can begin

after cut-off or once cement reaches 500 psi compressive strength (including lead when specified), whichever is greater. However, if the float does not hold, cut-off cannot be initiated until cement reaches 500 psi compressive strength (including lead when specified).

2. The tests shall be done by an independent service company utilizing a test plug **not a cup or J-packer**. The operator also has the option of utilizing an independent tester to test without a plug (i.e. against the casing) pursuant to Onshore Order 2 with the pressure not to exceed 70% of the burst rating for the casing. Any test against the casing must meet the WOC time for water basin (18 hours) or potash (24 hours) or 500 pounds compressive strength, whichever is greater, prior to initiating the test (see casing segment as lead cement may be critical item).
3. The test shall be run on a 5000 psi chart for a 2-3M BOP/BOP, on a 10000 psi chart for a 5M BOP/BOPE and on a 15000 psi chart for a 10M BOP/BOPE. If a linear chart is used, it shall be a one hour chart. A circular chart shall have a maximum 2 hour clock. If a twelve hour or twenty-four hour chart is used, tester shall make a notation that it is run with a two hour clock.
4. The results of the test shall be reported to the appropriate BLM office.
5. All tests are required to be recorded on a calibrated test chart. **A copy of the BOP/BOPE test chart and a copy of independent service company test will be submitted to the appropriate BLM office.**
6. The BOP/BOPE test shall include a low pressure test from 250 to 300 psi. The test will be held for a minimum of 10 minutes if test is done with a test plug and 30 minutes without a test plug. This test shall be performed prior to the test at full stack pressure.

V. DRILL STEM TEST

If drill stem tests are performed, Onshore Order 2.III.D shall be followed.

VI. WASTE MATERIAL AND FLUIDS

All waste (i.e. drilling fluids, trash, salts, chemicals, sewage, gray water, etc.) created as a result of drilling operations and completion operations shall be safely contained and disposed of properly at a waste disposal facility. No waste material or fluid shall be disposed of on the well location or surrounding area.

Porto-johns and trash containers will be on-location during fracturing operations or any other crew-intensive operations.

CLN 09/07/2017

PECOS DISTRICT SURFACE USE CONDITIONS OF APPROVAL

OPERATOR'S NAME:	Mewbourne Oil Company
LEASE NO.:	NMLC061497
WELL NAME & NO.:	1H- Fuller 13- 12 B2ED Fed Com
SURFACE HOLE FOOTAGE:	2620'/S & 500'/W
BOTTOM HOLE FOOTAGE	330'/N & 600'/W, Sec. 12
LOCATION:	Section 13 T.26 S., R.29 E., NMPM
COUNTY:	Eddy County, New Mexico

TABLE OF CONTENTS

Standard Conditions of Approval (COA) apply to this APD. If any deviations to these standards exist or special COAs are required, the section with the deviation or requirement will be checked below.

- ☐ **General Provisions**
- ☐ **Permit Expiration**
- ☐ **Archaeology, Paleontology, and Historical Sites**
- ☐ **Noxious Weeds**
- ☒ **Special Requirements**
 - Phantom Bank Heronries
 - Cave/Karst
 - Watershed
- ☐ **Construction**
 - Notification
 - Topsoil
 - Closed Loop System
 - Federal Mineral Material Pits
 - Well Pads
 - Roads
- ☐ **Road Section Diagram**
- ☐ **Production (Post Drilling)**
 - Well Structures & Facilities
- ☐ **Interim Reclamation**
- ☐ **Final Abandonment & Reclamation**

I. GENERAL PROVISIONS

The approval of the Application For Permit To Drill (APD) is in compliance with all applicable laws and regulations: 43 Code of Federal Regulations 3160, the lease terms, Onshore Oil and Gas Orders, Notices To Lessees, New Mexico Oil Conservation Division (NMOCD) Rules, National Historical Preservation Act As Amended, and instructions and orders of the Authorized Officer. Any request for a variance shall be submitted to the Authorized Officer on Form 3160-5, Sundry Notices and Report on Wells.

II. PERMIT EXPIRATION

If the permit terminates prior to drilling and drilling cannot be commenced within 60 days after expiration, an operator is required to submit Form 3160-5, Sundry Notices and Reports on Wells, requesting surface reclamation requirements for any surface disturbance. However, if the operator will be able to initiate drilling within 60 days after the expiration of the permit, the operator must have set the conductor pipe in order to allow for an extension of 60 days beyond the expiration date of the APD. (Filing of a Sundry Notice is required for this 60 day extension.)

III. ARCHAEOLOGICAL, PALEONTOLOGY & HISTORICAL SITES

Any cultural and/or paleontological resource discovered by the operator or by any person working on the operator's behalf shall immediately report such findings to the Authorized Officer. The operator is fully accountable for the actions of their contractors and subcontractors. The operator shall suspend all operations in the immediate area of such discovery until written authorization to proceed is issued by the Authorized Officer. An evaluation of the discovery shall be made by the Authorized Officer to determine the appropriate actions that shall be required to prevent the loss of significant cultural or scientific values of the discovery. The operator shall be held responsible for the cost of the proper mitigation measures that the Authorized Officer assesses after consultation with the operator on the evaluation and decisions of the discovery. Any unauthorized collection or disturbance of cultural or paleontological resources may result in a shutdown order by the Authorized Officer.

IV. NOXIOUS WEEDS

The operator shall be held responsible if noxious weeds become established within the areas of operations. Weed control shall be required on the disturbed land where noxious weeds exist, which includes the roads, pads, associated pipeline corridor, and adjacent land affected by the establishment of weeds due to this action. The operator shall consult with the Authorized Officer for acceptable weed control methods, which include following EPA and BLM requirements and policies.

V. SPECIAL REQUIREMENT(S)

Phantom Bank Heronries

Surface disturbance will not be allowed within up to 200 meters of active heronries or by delaying activity for up to 120 days, or a combination of both.

Exhaust noise from engines must be muffled or otherwise controlled so as not to exceed 75 db measured at 30 ft. from the source of the noise.

Cave Karst

** Depending on location, additional Drilling, Casing, and Cementing procedures may be required by engineering to protect critical karst groundwater recharge areas.

Cave/Karst Surface Mitigation

The following stipulations will be applied to minimize impacts during construction, drilling and production.

Construction:

In the advent that any underground voids are opened up during construction activities, construction activities will be halted and the BLM will be notified immediately.

No Blasting:

No blasting will be utilized for pad construction. The pad will be constructed and leveled by adding the necessary fill and caliche.

Pad Berming:

The entire perimeter of the well pad will be bermed to prevent oil, salt, and other chemical contaminants from leaving the well pad.

- The compacted berm shall be constructed at a minimum of 12 inches high with impermeable mineral material (e.g. caliche).
- No water flow from the uphill side(s) of the pad shall be allowed to enter the well pad.
- The topsoil stockpile shall be located outside the bermed well pad.
- Topsoil, either from the well pad or surrounding area, shall not be used to construct the berm.
- No storm drains, tubing or openings shall be placed in the berm.
- If fluid collects within the bermed area, the fluid must be vacuumed into a safe container and disposed of properly at a state approved facility.
- The integrity of the berm shall be maintained around the surfaced pad throughout the life of the well and around the downsized pad after interim reclamation has been completed.

- Any access road entering the well pad shall be constructed so that the integrity of the berm height surrounding the well pad is not compromised. (Any access road crossing the berm cannot be lower than the berm height.)

Tank Battery Liners and Berms:

Tank battery locations and all facilities will be lined and bermed. A 20 mil permanent liner will be installed with a 4 oz. felt backing to prevent tears or punctures. Tank battery berms must be large enough to contain 1 ½ times the content of the largest tank.

Leak Detection System:

A method of detecting leaks is required. The method could incorporate gauges to measure loss, siting valves and lines so they can be visually inspected, or installing electronic sensors to alarm when a leak is present. Leak detection plan will be submitted to BLM for approval.

Automatic Shut-off Systems:

Automatic shut off, check valves, or similar systems will be installed for pipelines and tanks to minimize the effects of catastrophic line failures used in production or drilling.

Cave/Karst Subsurface Mitigation

The following stipulations will be applied to protect cave/karst and ground water concerns:

Rotary Drilling with Fresh Water:

Fresh water will be used as a circulating medium in zones where caves or karst features are expected. SEE ALSO: Drilling COAs for this well.

Directional Drilling:

Kick off for directional drilling will occur at least 100 feet below the bottom of the cave occurrence zone. SEE ALSO: Drilling COAs for this well.

Lost Circulation:

ALL lost circulation zones from the surface to the base of the cave occurrence zone will be logged and reported in the drilling report.

Regardless of the type of drilling machinery used, if a void of four feet or more and circulation losses greater than 70 percent occur simultaneously while drilling in any cave-bearing zone, the BLM will be notified immediately by the operator. The BLM will assess the situation and work with the operator on corrective actions to resolve the problem.

Abandonment Cementing:

Upon well abandonment in high cave karst areas additional plugging conditions of approval may be required. The BLM will assess the situation and work with the operator to ensure proper plugging of the wellbore.

Pressure Testing:

Annual pressure monitoring will be performed by the operator on all casing annuli and reported in a sundry notice. If the test results indicated a casing failure has occurred, remedial action will be undertaken to correct the problem to the BLM's approval.

Watershed

- The entire well pad will be bermed to prevent oil, salt, and other chemical contaminants from leaving the well pad. Topsoil shall not be used to construct the berm. No water flow from the uphill side(s) of the pad shall be allowed to enter the well pad. The berm shall be maintained through the life of the well and after interim reclamation has been completed.
- Any water erosion that may occur due to the construction of the well pad during the life of the well will be quickly corrected and proper measures will be taken to prevent future erosion.

VI. CONSTRUCTION

A. NOTIFICATION

The BLM shall administer compliance and monitor construction of the access road and well pad. Notify the Carlsbad Field Office at (575) 234-5909 at least 3 working days prior to commencing construction of the access road and/or well pad.

When construction operations are being conducted on this well, the operator shall have the approved APD and Conditions of Approval (COA) on the well site and they shall be made available upon request by the Authorized Officer.

B. TOPSOIL

The operator shall strip the top portion of the soil (root zone) from the entire well pad area and stockpile the topsoil along the edge of the well pad as depicted in the APD. The root zone is typically six (6) inches in depth. All the stockpiled topsoil will be redistributed over the interim reclamation areas. Topsoil shall not be used for berming the pad or facilities. For final reclamation, the topsoil shall be spread over the entire pad area for seeding preparation.

Other subsoil (below six inches) stockpiles must be completely segregated from the topsoil stockpile. Large rocks or subsoil clods (not evident in the surrounding terrain) must be buried within the approved area for interim and final reclamation.

C. CLOSED LOOP SYSTEM

Tanks are required for drilling operations: No Pits.

The operator shall properly dispose of drilling contents at an authorized disposal site.

D. FEDERAL MINERAL MATERIALS PIT

Payment shall be made to the BLM prior to removal of any federal mineral materials. Call the Carlsbad Field Office at (575) 234-5972.

E. WELL PAD SURFACING

Surfacing of the well pad is not required.

If the operator elects to surface the well pad, the surfacing material may be required to be removed at the time of reclamation. The well pad shall be constructed in a manner which creates the smallest possible surface disturbance, consistent with safety and operational needs.

F. EXCLOSURE FENCING (CELLARS & PITS)

Exclosure Fencing

The operator will install and maintain exclosure fencing for all open well cellars to prevent access to public, livestock, and large forms of wildlife before and after drilling operations until the pit is free of fluids and the operator initiates backfilling. (For examples of exclosure fencing design, refer to BLM's Oil and Gas Gold Book, Exclosure Fence Illustrations, Figure 1, Page 18.)

G. ON LEASE ACCESS ROADS**Road Width**

The access road shall have a driving surface that creates the smallest possible surface disturbance and does not exceed fourteen (14) feet in width. The maximum width of surface disturbance, when constructing the access road, shall not exceed twenty-five (25) feet.

Surfacing

Surfacing material is not required on the new access road driving surface. If the operator elects to surface the new access road or pad, the surfacing material may be required to be removed at the time of reclamation.

Where possible, no improvements should be made on the unsurfaced access road other than to remove vegetation as necessary, road irregularities, safety issues, or to fill low areas that may sustain standing water.

The Authorized Officer reserves the right to require surfacing of any portion of the access road at any time deemed necessary. Surfacing may be required in the event the road deteriorates, erodes, road traffic increases, or it is determined to be beneficial for future field development. The surfacing depth and type of material will be determined at the time of notification.

Crowning

Crowning shall be done on the access road driving surface. The road crown shall have a grade of approximately 2% (i.e., a 1" crown on a 14' wide road). The road shall conform to Figure 1; cross section and plans for typical road construction.

Ditching

Ditching shall be required on both sides of the road.

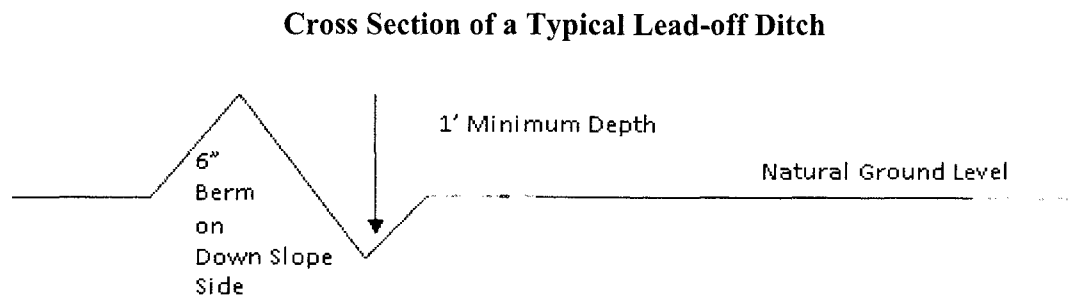
Turnouts

Vehicle turnouts shall be constructed on the road. Turnouts shall be intervisible with interval spacing distance less than 1000 feet. Turnouts shall conform to Figure 1; cross section and plans for typical road construction.

Drainage

Drainage control systems shall be constructed on the entire length of road (e.g. ditches, sidehill outslowing and insloping, lead-off ditches, culvert installation, and low water crossings).

A typical lead-off ditch has a minimum depth of 1 foot below and a berm of 6 inches above natural ground level. The berm shall be on the down-slope side of the lead-off ditch.



All lead-off ditches shall be graded to drain water with a 1 percent minimum to 3 percent maximum ditch slope. The spacing interval are variable for lead-off ditches and shall be determined according to the formula for spacing intervals of lead-off ditches, but may be amended depending upon existing soil types and centerline road slope (in %);

Formula for Spacing Interval of Lead-off Ditches

Example - On a 4% road slope that is 400 feet long, the water flow shall drain water into a lead-off ditch. Spacing interval shall be determined by the following formula:

$$400 \text{ foot road with } 4\% \text{ road slope: } \frac{400'}{4\%} + 100' = 200' \text{ lead-off ditch interval}$$

Cattle guards

An appropriately sized cattle guard sufficient to carry out the project shall be installed and maintained at fence/road crossings. Any existing cattle guards on the access road route shall be repaired or replaced if they are damaged or have deteriorated beyond practical use. The operator shall be responsible for the condition of the existing cattle guards that are in place and are utilized during lease operations.

Fence Requirement

Where entry is granted across a fence line, the fence shall be braced and tied off on both sides of the passageway prior to cutting. The operator shall notify the private surface landowner or the grazing allotment holder prior to crossing any fences.

Public Access

Public access on this road shall not be restricted by the operator without specific written approval granted by the Authorized Officer.

Construction Steps

1. Salvage topsoil
2. Construct road

3. Redistribute topsoil
4. Revegetate slopes

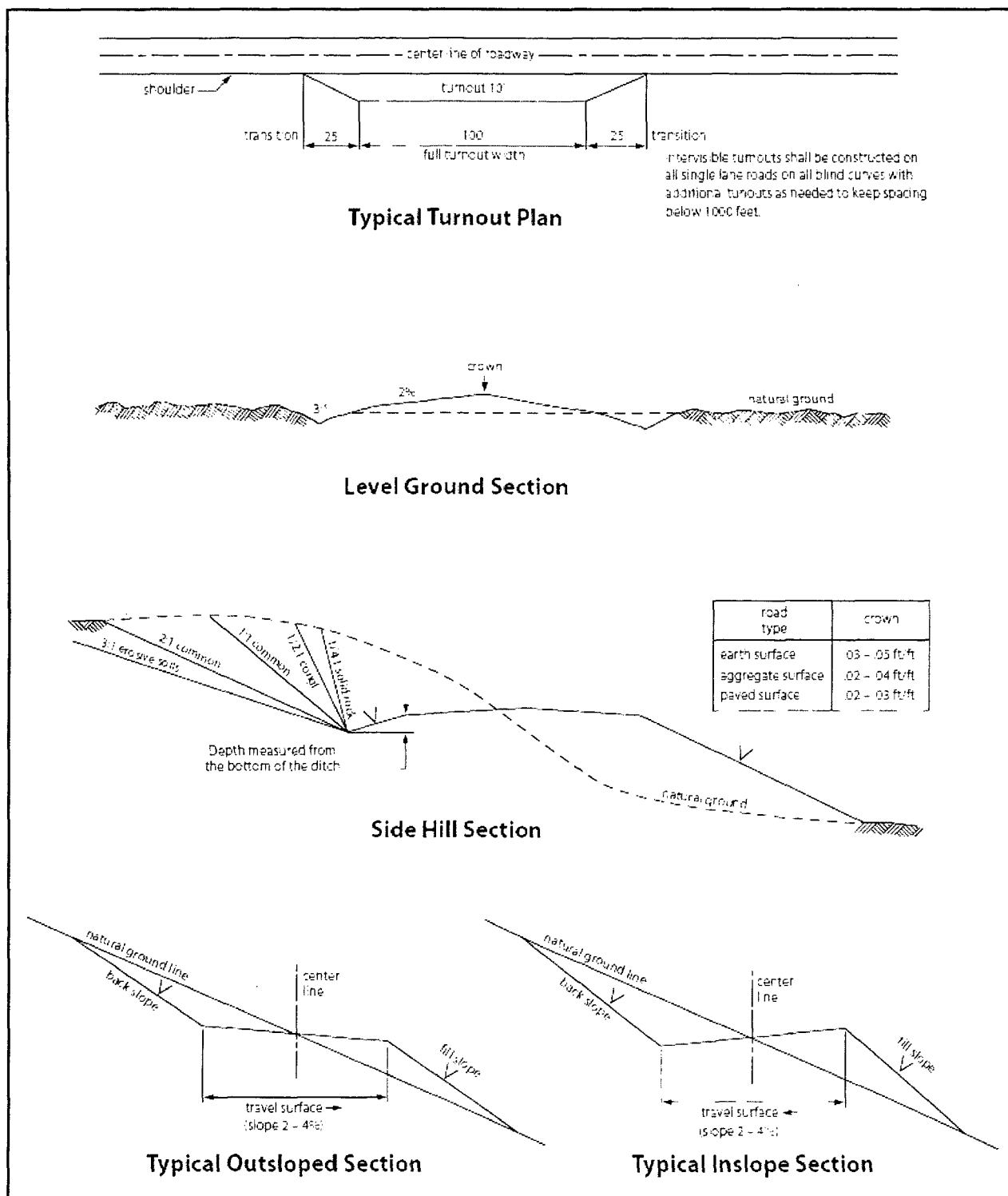


Figure 1. Cross-sections and plans for typical road sections representative of BLM resource or FS local and higher-class roads.

VII. PRODUCTION (POST DRILLING)

A. WELL STRUCTURES & FACILITIES

Placement of Production Facilities

Production facilities should be placed on the well pad to allow for maximum interim recontouring and revegetation of the well location.

Exclosure Netting (Open-top Tanks)

Immediately following active drilling or completion operations, the operator will take actions necessary to prevent wildlife and livestock access, including avian wildlife, to all open-topped tanks that contain or have the potential to contain salinity sufficient to cause harm to wildlife or livestock, hydrocarbons, or Resource Conservation and Recovery Act of 1976-exempt hazardous substances. At a minimum, the operator will net, screen, or cover open-topped tanks to exclude wildlife and livestock and prevent mortality. If the operator uses netting, the operator will cover and secure the open portion of the tank to prevent wildlife entry. The operator will net, screen, or cover the tanks until the operator removes the tanks from the location or the tanks no longer contain substances that could be harmful to wildlife or livestock. Use a maximum netting mesh size of 1 ½ inches. The netting must not be in contact with fluids and must not have holes or gaps.

Chemical and Fuel Secondary Containment and Exclosure Screening

The operator will prevent all hazardous, poisonous, flammable, and toxic substances from coming into contact with soil and water. At a minimum, the operator will install and maintain an impervious secondary containment system for any tank or barrel containing hazardous, poisonous, flammable, or toxic substances sufficient to contain the contents of the tank or barrel and any drips, leaks, and anticipated precipitation. The operator will dispose of fluids within the containment system that do not meet applicable state or U. S. Environmental Protection Agency livestock water standards in accordance with state law; the operator must not drain the fluids to the soil or ground. The operator will design, construct, and maintain all secondary containment systems to prevent wildlife and livestock exposure to harmful substances. At a minimum, the operator will install effective wildlife and livestock exclosure systems such as fencing, netting, expanded metal mesh, lids, and grate covers. Use a maximum netting mesh size of 1 ½ inches.

Open-Vent Exhaust Stack Exclosures

The operator will construct, modify, equip, and maintain all open-vent exhaust stacks on production equipment to prevent birds and bats from entering, and to discourage perching, roosting, and nesting. (*Recommended exclosure structures on open-vent exhaust stacks are in the shape of a cone.*) Production equipment includes, but may not be limited to, tanks, heater-treaters, separators, dehydrators, flare stacks, in-line units, and compressor mufflers.

Containment Structures

Proposed production facilities such as storage tanks and other vessels will have a secondary containment structure that is constructed to hold the capacity of 1.5 times the largest tank, plus freeboard to account for precipitation, unless more stringent protective requirements are deemed necessary.

Painting Requirement

All above-ground structures including meter housing that are not subject to safety requirements shall be painted a flat non-reflective paint color, **Shale Green** from the BLM Standard Environmental Color Chart (CC-001: June 2008).

VIII. INTERIM RECLAMATION

During the life of the development, all disturbed areas not needed for active support of production operations should undergo interim reclamation in order to minimize the environmental impacts of development on other resources and uses.

Within six (6) months of well completion, operators should work with BLM surface management specialists (Jim Amos: 575-234-5909) to devise the best strategies to reduce the size of the location. Interim reclamation should allow for remedial well operations, as well as safe and efficient removal of oil and gas.

During reclamation, the removal of caliche is important to increasing the success of revegetating the site. Removed caliche that is free of contaminants may be used for road repairs, fire walls or for building other roads and locations. In order to operate the well or complete workover operations, it may be necessary to drive, park and operate on restored interim vegetation within the previously disturbed area. Disturbing revegetated areas for production or workover operations will be allowed. If there is significant disturbance and loss of vegetation, the area will need to be revegetated. Communicate with the appropriate BLM office for any exceptions/exemptions if needed.

All disturbed areas after they have been satisfactorily prepared need to be reseeded with the seed mixture provided below.

Upon completion of interim reclamation, the operator shall submit a Sundry Notices and Reports on Wells, Subsequent Report of Reclamation (Form 3160-5).

IX. FINAL ABANDONMENT & RECLAMATION

At final abandonment, well locations, production facilities, and access roads must undergo "final" reclamation so that the character and productivity of the land are restored.

Earthwork for final reclamation must be completed within six (6) months of well plugging. All pads, pits, facility locations and roads must be reclaimed to a satisfactory revegetated, safe, and stable condition, unless an agreement is made with the landowner or BLM to keep the road and/or pad intact.

After all disturbed areas have been satisfactorily prepared, these areas need to be revegetated with the seed mixture provided below. Seeding should be accomplished by drilling on the contour whenever practical or by other approved methods. Seeding may need to be repeated until revegetation is successful, as determined by the BLM.

Operators shall contact a BLM surface protection specialist prior to surface abandonment operations for site specific objectives (Jim Amos: 575-234-5909).

Seed Mixture 1 for Loamy Sites

Holder shall seed all disturbed areas with the seed mixture listed below. The seed mixture shall be planted in the amounts specified in pounds of pure live seed (PLS)* per acre. There shall be no primary or secondary noxious weeds in the seed mixture. Seed shall be tested and the viability testing of seed will be done in accordance with State law(s) and within nine (9) months prior to purchase. Commercial seed shall be either certified or registered seed. The seed container shall be tagged in accordance with State law(s) and available for inspection by the Authorized Officer.

Seed shall be planted using a drill equipped with a depth regulator to ensure proper depth regulator to ensure proper depth of planting where drilling is possible. The seed mixture shall be evenly and uniformly planted over the disturbed area (small/heavier seeds have a tendency to drop the bottom of the drill and are planted first). Holder shall take appropriate measures to ensure this does not occur. Where drilling is not possible, seed shall be broadcast and the area shall be raked or chained to cover the seed. When broadcasting the seed, the pounds per acre shall be doubled. The seeding shall be repeated until a satisfactory stand is established as determined by the Authorized Officer. Evaluation of growth may not be made before completion of at least one full growing season after seeding.

Species to be planted in pounds of pure live seed* per acre:

<u>Species</u>	<u>lb/acre</u>
Plains lovegrass (<i>Eragrostis intermedia</i>)	0.5
Sand dropseed (<i>Sporobolus cryptandrus</i>)	1.0
Sideoats grama (<i>Bouteloua curtipendula</i>)	5.0
Plains bristlegrass (<i>Setaria macrostachya</i>)	2.0

*Pounds of pure live seed:

Pounds of seed x percent purity x percent germination = pounds pure live seed

Operator Certification

I hereby certify that I, or someone under my direct supervision, have inspected the drill site and access route proposed herein; that I am familiar with the conditions which currently exist; that I have full knowledge of state and Federal laws applicable to this operation; that the statements made in this APD package are, to the best of my knowledge, true and correct; and that the work associated with the operations proposed herein will be performed in conformity with this APD package and the terms and conditions under which it is approved. I also certify that I, or the company I represent, am responsible for the operations conducted under this application. These statements are subject to the provisions of 18 U.S.C. 1001 for the filing of false statements.

NAME: Bradley Bishop**Signed on:** 11/22/2016**Title:** Regulatory**Street Address:** PO Box 5270**City:** Hobbs**State:** NM**Zip:** 88240**Phone:** (575)393-5905**Email address:** bbishop@mewbourne.com**Field Representative****Representative Name:****Street Address:****City:****State:****Zip:****Phone:****Email address:**

APD ID: 10400008163

Submission Date: 11/22/2016

Highlighted data
reflects the most
recent changes

Operator Name: MEWBOURNE OIL COMPANY

Well Name: FULLER 13/12 B2ED FED COM

Well Number: 1H

[Show Final Text](#)
Well Type: CONVENTIONAL GAS WELL

Well Work Type: Drill

Section 1 - General

APD ID: 10400008163

Tie to previous NOS?
Submission Date: 11/22/2016

BLM Office: CARLSBAD

User: Bradley Bishop

Title: Regulatory

Federal/Indian APD: FED

Is the first lease penetrated for production Federal or Indian? FED

Lease number: NMLC 061497

Lease Acres: 640

Surface access agreement in place?
Allotted?
Reservation:
Agreement in place? NO

Federal or Indian agreement:
Agreement number:
Agreement name:
Keep application confidential? YES

Permitting Agent? NO

APD Operator: MEWBOURNE OIL COMPANY

Operator letter of designation: Fuller 13 12 B2ED Fed Com 1H_operatorletterofcertification_11-17-2016.pdf

Operator Info

Operator Organization Name: MEWBOURNE OIL COMPANY

Operator Address: PO Box 5270

Zip: 88240

Operator PO Box:
Operator City: Hobbs

State: NM

Operator Phone: (575)393-5905

Operator Internet Address:

Section 2 - Well Information

Well in Master Development Plan? NO

Mater Development Plan name:
Well in Master SUPO? NO

Master SUPO name:
Well in Master Drilling Plan? NO

Master Drilling Plan name:
Well Name: FULLER 13/12 B2ED FED COM

Well Number: 1H

Well API Number:
Field/Pool or Exploratory? Field and Pool

Field Name: BRUSHY DRAW
WOLFCAMP GAS

Pool Name: WOLFCAMP

Is the proposed well in an area containing other mineral resources? USEABLE WATER

Operator Name: MEWBOURNE OIL COMPANY

Well Name: FULLER 13/12 B2ED FED COM

Well Number: 1H

Describe other minerals:

Is the proposed well in a Helium production area? N **Use Existing Well Pad?** NO **New surface disturbance?**

Type of Well Pad: SINGLE WELL

Multiple Well Pad Name:

Number:

Well Class: HORIZONTAL

Number of Legs:

Well Work Type: Drill

Well Type: CONVENTIONAL GAS WELL

Describe Well Type:

Well sub-Type: APPRAISAL

Describe sub-type:

Distance to town: 25 Miles

Distance to nearest well: 50 FT

Distance to lease line: 330 FT

Reservoir well spacing assigned acres Measurement: 480 Acres

Well plat: Fuller 13 12 B2ED Fed Com 1H_well plat2_12-15-2016.pdf

Well work start Date: 03/07/2017

Duration: 60 DAYS

Section 3 - Well Location Table

Survey Type: RECTANGULAR

Describe Survey Type:

Datum: NAD83

Vertical Datum: NAVD88

Survey number:

	NS-Foot	NS Indicator	EW-Foot	EW Indicator	Twsp	Range	Section	Aliquot/Lot/Tract	Latitude	Longitude	County	State	Meridian	Lease Type	Lease Number	Elevation	MD	TVD
SHL Leg #1	262 0	FSL	500	FWL	26S	29E	13	Aliquot NWS W	32.04174 56	- 103.9439 397	EDD Y	NEW MEXI CO	NEW MEXI CO	F	NMLC0 61497	295 9	0	0
KOP Leg #1	262 0	FSL	500	FWL	26S	29E	13	Aliquot NWS W	32.04174 56	- 103.9439 397	EDD Y	NEW MEXI CO	NEW MEXI CO	F	NMLC0 61497	- 548 1	844 0	844 0
PPP Leg #1	231 0	FNL	603	FWL	26S	29E	13	Aliquot SWN W	32.04298 2	- 103.9437 1	EDD Y	NEW MEXI CO	NEW MEXI CO	F	NMLC0 61497	- 580 8	880 0	876 7

Operator Name: MEWBOURNE OIL COMPANY

Well Name: FULLER 13/12 B2ED FED COM

Well Number: 1H

	NS-Foot	NS Indicator	EW-Foot	EW Indicator	Twsp	Range	Section	Aliquot/Lot/Tract	Latitude	Longitude	County	State	Meridian	Lease Type	Lease Number	Elevation	MD	TVD
EXIT Leg #1	330	FNL	660	FWL	26S	29E	12	Aliquot NWN W	32.06325	- 103.9433 455	EDD Y	NEW MEXI CO	NEW MEXI CO	F	NMNM 11039	- 596 5	165 39	892 4
BHL Leg #1	330	FNL	660	FWL	26S	29E	12	Aliquot NWN W	32.06325	- 103.9433 455	EDD Y	NEW MEXI CO	NEW MEXI CO	F	NMNM 11039	- 596 5	165 39	892 4

**United States Department of the Interior
Bureau of Land Management
Roswell Field Office
2909 West Second Street
Roswell, New Mexico 88201-1287**

Statement Accepting Responsibility for Operations

Operator Name: Mewbourne Oil Company
Street or Box: P.O. Box 5270
City, State: Hobbs, New Mexico
Zip Code: 88241

The undersigned accepts all applicable terms, conditions, stipulations, and restrictions concerning operations conducted of the leased land or portion thereof, as described below.

Lease Number: NMLC 061497, NMLC 071066 & NMNM 11039

Legal Description of Land: Section 13, T-26S, R-29E Eddy County, New Mexico.
Location @ 2620' FSL & 500' FWL.

Formation (if applicable): Brushy Draw Wolfcamp Gas

Bond Coverage: \$150,000

BLM Bond File: NM1693 Nationwide, NMB 000919

Approved by:

Authorized Signature: _____

Name: Robin Terrell
Title: District Manager
Date: 11-17-2016

APD ID: 10400008163

Submission Date: 11/22/2016

Highlighted data
reflects the most
recent changes

Operator Name: MEWBOURNE OIL COMPANY

Well Name: FULLER 13/12 B2ED FED COM

Well Number: 1H

[Show Final Text](#)
Well Type: CONVENTIONAL GAS WELL

Well Work Type: Drill

Section 1 - Geologic Formations

Formation ID	Formation Name	Elevation	True Vertical Depth	Measured Depth	Lithologies	Mineral Resources	Producing Formation
17691	UNKNOWN	2959	27	27		NONE	No
17746	RUSTLER	2379	580	580	DOLOMITE, ANHYDRITE	USEABLE WATER	No
17718	TOP SALT	1574	1385	1385	SALT	NONE	No
17722	BASE OF SALT	39	2920	2920	SALT	NONE	No
17719	LAMAR	-151	3110	3110	LIMESTONE	NATURAL GAS, OIL	No
15332	BELL CANYON	-186	3145	3145	SANDSTONE	NATURAL GAS, OIL	No
15316	CHERRY CANYON	-1061	4020	4020	SANDSTONE	NATURAL GAS, OIL	No
17766	MANZANITA	-1241	4200	4200		NONE	No
17713	BRUSHY CANYON	-2351	5310	5310	SANDSTONE	NATURAL GAS, OIL	Yes
17688	BONE SPRING	-3946	6905	6905	LIMESTONE, SHALE	NATURAL GAS, OIL	No
15338	BONE SPRING 1ST	-4881	7840	7840	SANDSTONE	NATURAL GAS, OIL	No
17737	BONE SPRING 2ND	-5506	8465	8465	SANDSTONE	NATURAL GAS, OIL	Yes

Section 2 - Blowout Prevention

Pressure Rating (PSI): 2M

Rating Depth: 3035

Equipment: Annular

Requesting Variance? NO

Variance request:
Testing Procedure: Test to 1500#

Choke Diagram Attachment:

Operator Name: MEWBOURNE OIL COMPANY

Well Name: FULLER 13/12 B2ED FED COM

Well Number: 1H

Fuller 13-12 B2ED Fed Com 1H_3M Surface BOPE Choke Diagram_11-18-2016.pdf

BOP Diagram Attachment:

Fuller 13-12 B2ED Fed Com 1H_3M Surface BOPE Schematic_11-18-2016.pdf

Pressure Rating (PSI): 3M

Rating Depth: 16539

Equipment: Annular, Pipe Ram, Blind Ram

Requesting Variance? YES

Variance request: A variance is requested for the use of a flexible choke line from the BOP to Choke Manifold.

Testing Procedure: Test Annular to 1500# Test BOPE to 3000#

Choke Diagram Attachment:

Fuller 13-12 B2ED Fed Com 1H_Flex Line Specs_11-18-2016.pdf

Fuller 13-12 B2ED Fed Com 1H_3M BOPE Choke Diagram_11-21-2016.pdf

BOP Diagram Attachment:

Fuller 13-12 B2ED Fed Com 1H_3M BOPE Schematic_11-21-2016.pdf

Pressure Rating (PSI): 3M

Rating Depth: 9190

Equipment: Annular, Pipe Ram, Blind Ram

Requesting Variance? YES

Variance request: A variance is requested for the use of a flexible choke line from the BOP to Choke Manifold.

Testing Procedure: Test Annular to 1500#. Test BOPE to 3000#.

Choke Diagram Attachment:

Fuller 13-12 B2ED Fed Com 1H_3M BOPE Choke Diagram_11-18-2016.pdf

BOP Diagram Attachment:

Fuller 13-12 B2ED Fed Com 1H_3M BOPE Schematic_11-18-2016.pdf

Operator Name: MEWBOURNE OIL COMPANY

Well Name: FULLER 13/12 B2ED FED COM

Well Number: 1H

Section 3 - Casing

Casing ID	String Type	Hole Size	Csg Size	Condition	Standard	Tapered String	Top Set MD	Bottom Set MD	Top Set TVD	Bottom Set TVD	Top Set MSL	Bottom Set MSL	Calculated casing length MD	Grade	Weight	Joint Type	Collapse SF	Burst SF	Joint SF Type	Joint SF	Body SF Type	Body SF
1	SURFACE	17.5	13.375	NEW	API	N	0	605	0	605	-5965	-6570	605	H-40	48	STC	2.45	5.5	DRY	11.09	DRY	18.63
2	INTERMEDIATE	12.25	9.625	NEW	API	N	0	3035	0	3035	-5965	-9000	3035	J-55	36	LTC	1.28	2.23	DRY	4.15	DRY	5.16
3	PRODUCTION	8.75	7.0	NEW	API	N	0	9190	0	9190	-5965	-15155	9190	P-110	26	LTC	1.68	2.15	DRY	2.68	DRY	3.47
4	LINER	6.125	4.5	NEW	API	N	8441	16539	8441	16539	-14406	-22504	8098	P-110	13.5	LTC	1.77	2.06	DRY	3.09	DRY	3.86

Casing Attachments

Casing ID: 1 String Type: SURFACE

Inspection Document:

Spec Document:

Tapered String Spec:

Casing Design Assumptions and Worksheet(s):

Fuller 13-12 B2ED Fed Com 1H_drilling program_11-18-2016.pdf

Operator Name: MEWBOURNE OIL COMPANY

Well Name: FULLER 13/12 B2ED FED COM

Well Number: 1H

Casing Attachments

Casing ID: 2 **String Type:**INTERMEDIATE

Inspection Document:

Spec Document:

Tapered String Spec:

Casing Design Assumptions and Worksheet(s):

Fuller 13-12 B2ED Fed Com 1H_drilling program_11-18-2016.pdf

Casing ID: 3 **String Type:**PRODUCTION

Inspection Document:

Spec Document:

Tapered String Spec:

Casing Design Assumptions and Worksheet(s):

Fuller 13-12 B2ED Fed Com 1H_drilling program_11-18-2016.pdf

Casing ID: 4 **String Type:**LINER

Inspection Document:

Spec Document:

Tapered String Spec:

Casing Design Assumptions and Worksheet(s):

Fuller 13-12 B2ED Fed Com 1H_drilling program_11-18-2016.pdf

Section 4 - Cement

Operator Name: MEWBOURNE OIL COMPANY

Well Name: FULLER 13/12 B2ED FED COM

Well Number: 1H

String Type	Lead/Tail	Stage Tool Depth	Top MD	Bottom MD	Quantity(sx)	Yield	Density	Cu Ft	Excess%	Cement type	Additives
SURFACE	Lead		0	140	305	2.12	12.5	647	100	Class C	Salt, Gel, Extender, LCM
SURFACE	Tail		140	605	200	1.34	14.8	268	100	Class C	Retarder
INTERMEDIATE	Lead		0	617	445	2.12	12.5	943	25	Class C	Salt, Gel, Extender, LCM
INTERMEDIATE	Tail		617	3035	200	1.34	14.8	268	25	Class C	Retarder
PRODUCTION	Lead		2835	5343	345	2.12	12.5	731	25	Class C	Gel, Retarder, Defoamer, Extender
PRODUCTION	Tail		5343	9190	400	1.18	15.6	472	25	Class H	Retarder, Fluid Loss, Defoamer
LINER	Lead		8441	16539	325	2.97	11.2	965	25	Class C	Salt, Gel, Fluid Loss, Retarder, Dispersant, Defoamer, Anti-Settling Agent

Section 5 - Circulating Medium

Mud System Type: Closed

Will an air or gas system be Used? NO

Description of the equipment for the circulating system in accordance with Onshore Order #2:

Diagram of the equipment for the circulating system in accordance with Onshore Order #2:

Describe what will be on location to control well or mitigate other conditions: Lost circulation material Sweeps Mud scavengers in surface hole

Describe the mud monitoring system utilized: Visual Monitoring

Circulating Medium Table

Top Depth	Bottom Depth	Mud Type	Min Weight (lbs/gal)	Max Weight (lbs/gal)	Density (lbs/cu ft)	Gel Strength (lbs/100 sqft)	PH	Viscosity (CP)	Salinity (ppm)	Filtration (cc)	Additional Characteristics
0	605	SPUD MUD	8.6	8.8							

Operator Name: MEWBOURNE OIL COMPANY

Well Name: FULLER 13/12 B2ED FED COM

Well Number: 1H

Top Depth	Bottom Depth	Mud Type	Min Weight (lbs/gal)	Max Weight (lbs/gal)	Density (lbs/cu ft)	Gel Strength (lbs/100 sqft)	PH	Viscosity (CP)	Salinity (ppm)	Filtration (cc)	Additional Characteristics
605	3035	SALT SATURATED	10	10							
3035	8441	WATER-BASED MUD	8.6	9.5							
8441	8924	WATER-BASED MUD	8.6	9.5							

Section 6 - Test, Logging, Coring

List of production tests including testing procedures, equipment and safety measures:

Will run GR/CNL from KOP (8,441') to surface

List of open and cased hole logs run in the well:

CNL,DS,GR,MWD,MUDLOG

Coring operation description for the well:

None

Section 7 - Pressure

Anticipated Bottom Hole Pressure: 3870

Anticipated Surface Pressure: 1906.72

Anticipated Bottom Hole Temperature(F): 140

Anticipated abnormal pressures, temperatures, or potential geologic hazards? NO

Describe:

Contingency Plans geohazards description:

Contingency Plans geohazards attachment:

Hydrogen Sulfide drilling operations plan required? YES

Hydrogen sulfide drilling operations plan:

Fuller 13-12 B2ED Fed Com 1H_H2S Plan_11-18-2016.pdf

Operator Name: MEWBOURNE OIL COMPANY

Well Name: FULLER 13/12 B2ED FED COM

Well Number: 1H

Section 8 - Other Information

Proposed horizontal/directional/multi-lateral plan submission:

Fuller 13-12 B2ED Fed Com 1H_Wall Plot_11-18-2016.pdf

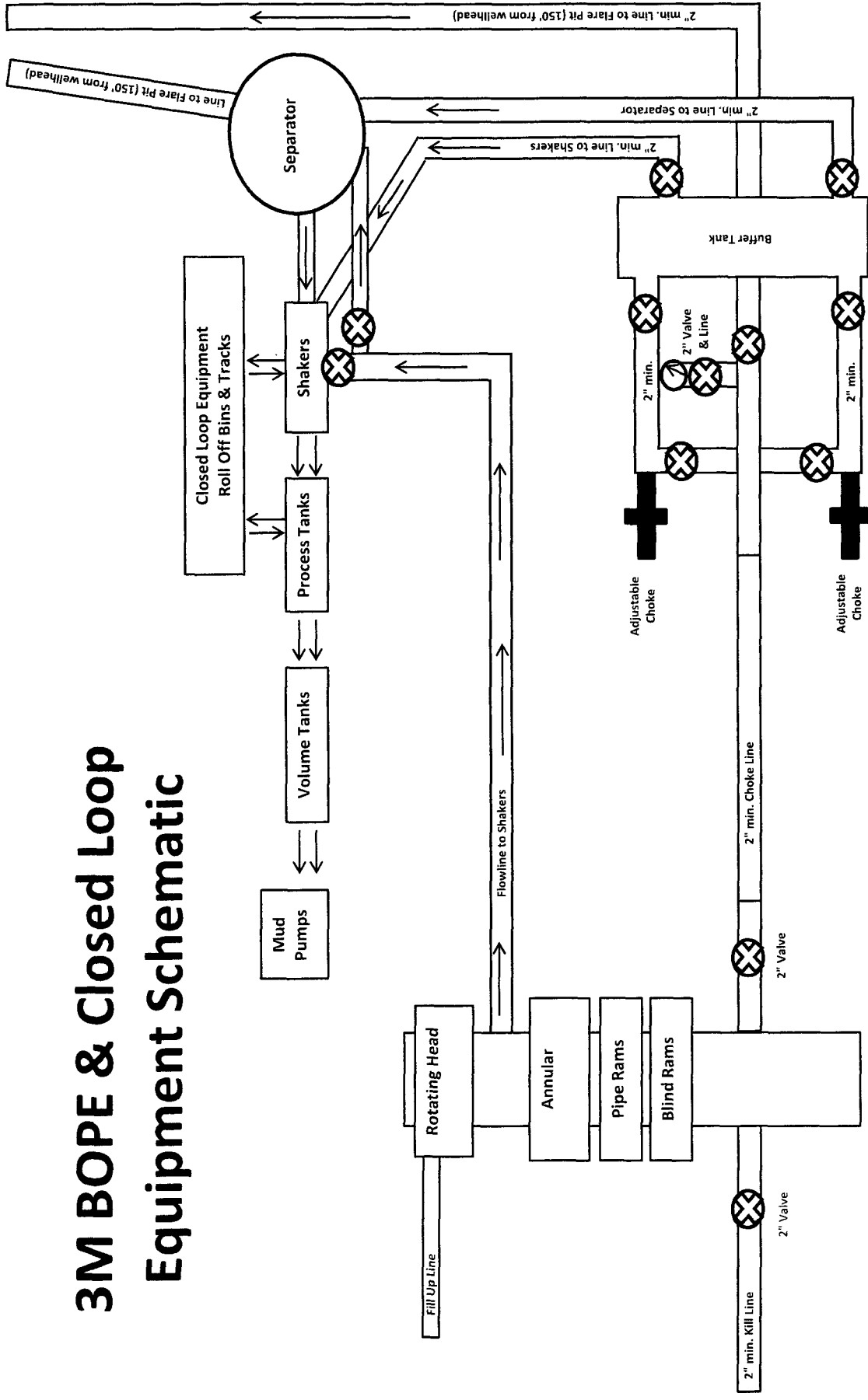
Fuller 13-12 B2ED Fed Com 1H_Dir Plan_11-21-2016.pdf

Other proposed operations facets description:

Other proposed operations facets attachment:

Other Variance attachment:

3M BOPE & Closed Loop Equipment Schematic





GATES E & S NORTH AMERICA, INC.
134 44TH STREET
CORPUS CHRISTI, TEXAS 78405

PHONE: 361-887-9807
FAX: 361-887-0812
EMAIL: Tim.Cantu@gates.com
WEB: www.gates.com

10K CEMENTING ASSEMBLY PRESSURE TEST CERTIFICATE

Customer :	AUSTIN DISTRIBUTING	Test Date:	4/30/2015
Customer Ref. :	4060578	Hose Serial No.:	D-043015-7
Invoice No. :	500506	Created By:	JUSTIN CROPPER

Product Description: 10K3.548.0CK4.1/1610KFLGE/E LE

End Fitting 1 :	4 1/16 10K FLG	End Fitting 2 :	4 1/16 10K FLG
Gates Part No. :	4773-6290	Assembly Code :	L36554102914D-043015-7
Working Pressure :	10,000 PSI	Test Pressure :	15,000 PSI

Gates E & S North America, Inc. certifies that the following hose assembly has been tested to the Gates Oilfield Roughneck Agreement/Specification requirements and passed the 15 minute hydrostatic test per API Spec 7K/Q1, Fifth Edition, June 2010, Test pressure 9.6.7 and per Table 9 to 15,000 psi in accordance with this product number. Hose burst pressure 9.6.7.2 exceeds the minimum of 2.5 times the working pressure per Table 9.

Quality Manager :
Date :
Signature :

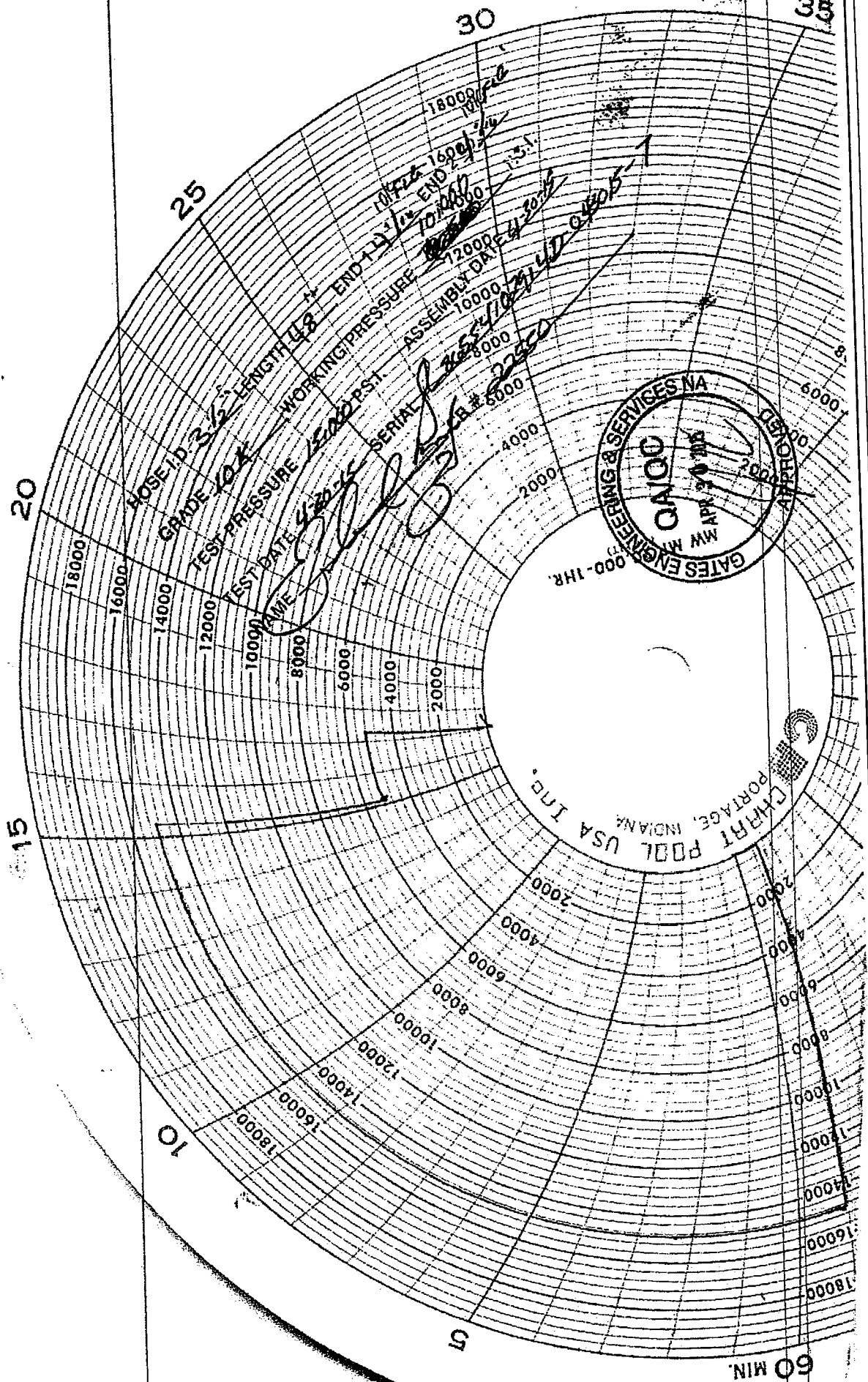
QUALITY
4/30/2015
<i>Justin Cropper</i>

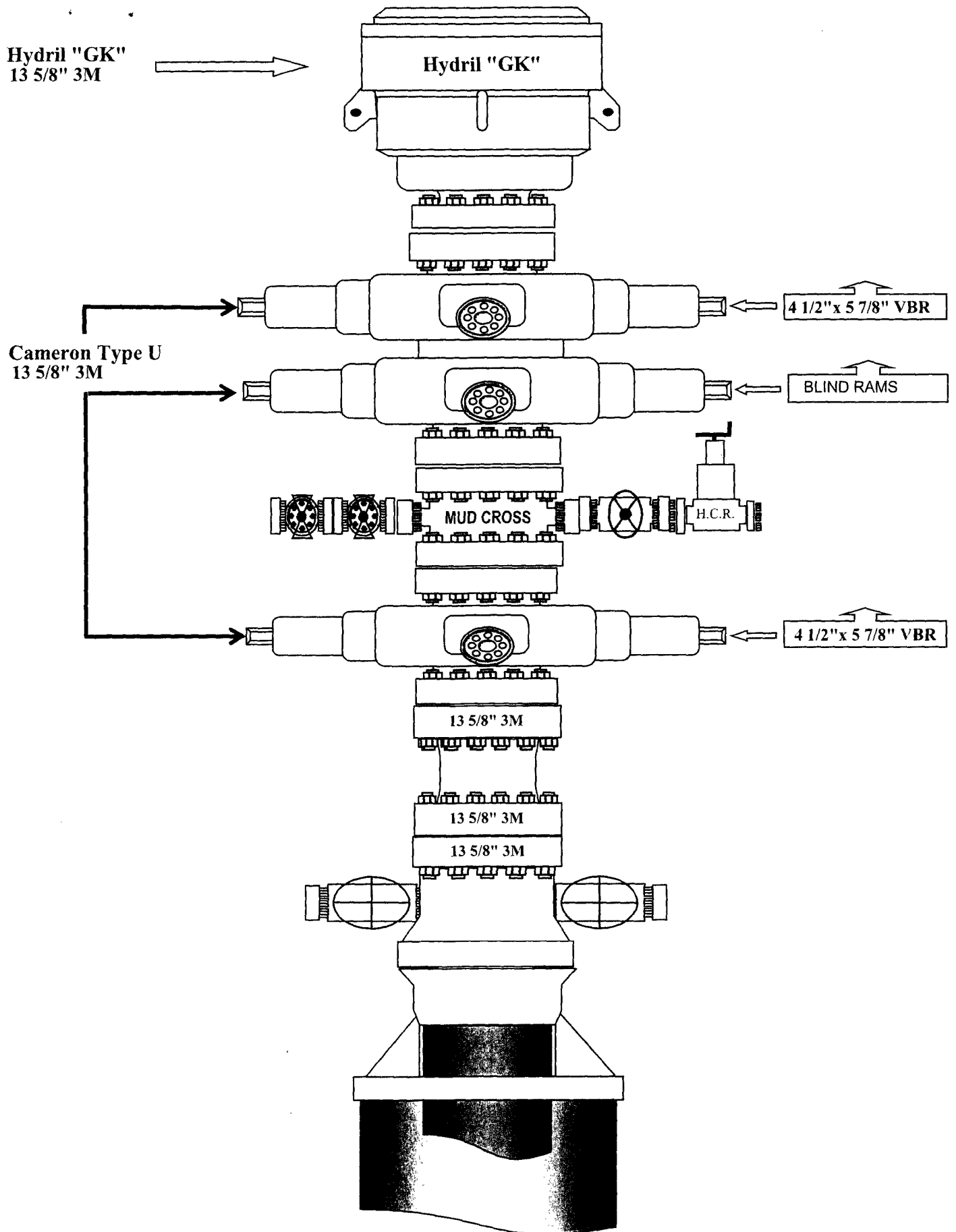
Production:
Date :
Signature :

PRODUCTION
4/30/2015
<i>HL</i>

Form-PTC - 01 Rev.0 2







Mewbourne Oil Company
BOP Schematic for

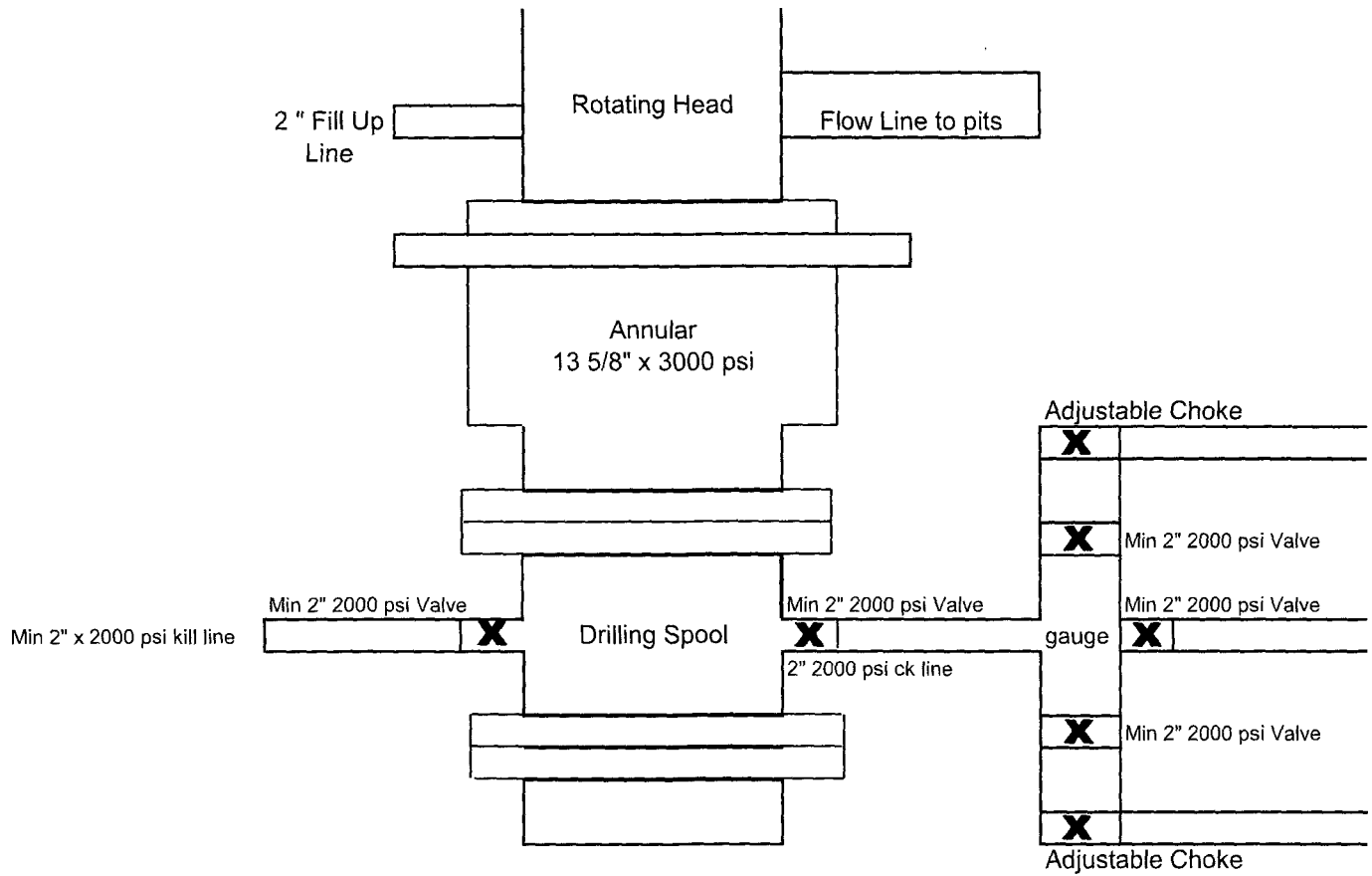


Exhibit #2

Mewbourne Oil Company, Fuller 13/12 B2ED Fed Com #1H

Sec 13, T26S, R29E

SL: 2,620' FSL & 500' FWL, Sec 13

BHL: 330' FNL & 660' FWL, Sec 12

1. Geologic Formations

TVD of target	8,924'	Pilot hole depth	NA
MD at TD:	16,539'	Deepest expected fresh water:	125'

Basin

Formation	Depth (TVD) from KB	Water/Mineral Bearing/ Target Zone?	Hazards*
Quaternary Fill	Surface		
Rustler	580'	Water	
Top of Salt	1,385'		
Base of Salt	2,920'		
Delaware (Lamar)	3,110'	Oil/Gas	
Bell Canyon	3,145'	Oil/Gas	
Cherry Canyon	4,020'	Oil/Gas	
Manzanita Marker	4,200'		
Brushy Canyon	5,310'	Oil/Gas	
Bone Spring	6,905'	Oil/Gas	
1 st Bone Spring Sand	7,840'	Oil/Gas	
2 nd Bone Spring Sand	8,465'	Target Zone	
3 rd Bone Spring Sand		Will Not Penetrate	
Abo			
Wolfcamp			
Devonian			
Fusselman			
Ellenburger			
Granite Wash			

*H₂S, water flows, loss of circulation, abnormal pressures, etc.

Mewbourne Oil Company, Fuller 13/12 B2ED Fed Com #1H
Sec 13, T26S, R29E
SL: 2,620' FSL & 500' FWL, Sec 13
BHL: 330' FNL & 660' FWL, Sec 12

2. Casing Program

Hole Size	Casing Interval		Csg. Size	Weight (lbs)	Grade	Conn.	SF Collapse	SF Burst	SF Jt Tension	SF Body Tension
	From	To								
17.5"	0'	605'	13.375"	48	H40	STC	2.45	5.5	11.09	18.63
12.25"	0'	3,035'	9.625"	36	J55	LTC	1.28	2.23	4.15	5.16
8.75"	0'	9,190'	7"	26	P110	LTC	1.68	2.15	2.68	3.47
6.125"	8,441'	16,539'	4.5"	13.5	P110	LTC	1.77	2.06	3.09	3.86
BLM Minimum Safety Factor							1.125	1	1.6 Dry 1.8 Wet	1.6 Dry 1.8 Wet

All casing strings will be tested in accordance with Onshore Oil and Gas Order #2 III.B.1.h

Must have table for contingency casing

	Y or N
Is casing new? If used, attach certification as required in Onshore Order #1	Y
Is casing API approved? If no, attach casing specification sheet.	Y
Is premium or uncommon casing planned? If yes attach casing specification sheet.	N
Does the above casing design meet or exceed BLM's minimum standards? If not provide justification (loading assumptions, casing design criteria).	Y
Will the pipe be kept at a minimum 1/3 fluid filled to avoid approaching the collapse pressure rating of the casing?	Y
Is well located within Capitan Reef?	N
If yes, does production casing cement tie back a minimum of 50' above the Reef?	
Is well within the designated 4 string boundary.	
Is well located in SOPA but not in R-111-P?	N
If yes, are the first 2 strings cemented to surface and 3 rd string cement tied back 500' into previous casing?	
Is well located in R-111-P and SOPA?	N
If yes, are the first three strings cemented to surface?	
Is 2 nd string set 100' to 600' below the base of salt?	
Is well located in high Cave/Karst?	N
If yes, are there two strings cemented to surface?	
(For 2 string wells) If yes, is there a contingency casing if lost circulation occurs?	
Is well located in critical Cave/Karst?	N
If yes, are there three strings cemented to surface?	

Mewbourne Oil Company, Fuller 13/12 B2ED Fed Com #1H

Sec 13, T26S, R29E

SL: 2,620' FSL & 500' FWL, Sec 13

BHL: 330' FNL & 660' FWL, Sec 12

3. Cementing Program

Casing	# Sks	Wt. lb/ gal	Yld ft3/ sack	H₂O gal/ sk	500# Comp. Strength (hours)	Slurry Description
Surf.	305	12.5	2.12	11	10	Lead: Class C + 4.0% Bentonite + 0.6% CD-32 + 5% Sodium Chloride + 0.25lb/sk Cello-Flake
	200	14.8	1.34	6.3	8	Tail: Class C + 0.005 pps Static Free + 1% CaCl ₂ + 0.25 pps Cello Flake + 0.005 gps FP-6L
Inter.	445	12.5	2.12	11	10	Lead: Class C (35:65:4) + 5% Sodium Chloride + 5#/sk LCM + 0.25 lb/sk Cello Flake
	200	14.8	1.34	6.3	8	Tail: Class C + 0.25 lb/sk Cello Flake + 0.005 lb/sk Static Free
Prod.	345	12.5	2.12	11	9	Lead: Class C (60:40:0) + 15.0 lb/sk BA-90 + 4.0% MPS-5 + 3.0% SMS + 5.0% A-10 + 1.0% BA-10A + 0.8% ASA-301 + 2.9% R-21 + 8.0 lb/sk LCM-1 + 0.005 lb/sk Static Free
	400	15.6	1.18	5.2	10	Tail: Class H + 0.65% FL-52 + 0.1% R-3 + 0.005 lb/sk Static Free
Liner	325	11.2	2.97	17	16	Class C (60:40:0) + 4% MPA5 + 1.2% BA10A + 10#/sk BA90 + 5% A10 + 0.65% ASA301 + 1.5%SMS + 1.2% R21

A copy of cement test will be available on location at time of cement job providing pump times & compressive strengths.

Casing String	TOC	% Excess
Surface	0'	100%
Intermediate	0'	25%
Production	2,835'	25%
Liner	8,440'	25%

Mewbourne Oil Company, Fuller 13/12 B2ED Fed Com #1H
Sec 13, T26S, R29E
SL: 2,620' FSL & 500' FWL, Sec 13
BHL: 330' FNL & 660' FWL, Sec 12

4. Pressure Control Equipment

Variance: None

BOP installed and tested before drilling which hole?	Size?	System Rated WP	Type	✓	Tested to:
12-1/4"	13-5/8"	2M	Annular	X	1,250#
			Blind Ram		
			Pipe Ram		
			Double Ram		
			Other*		
8-3/4"	11"	3M	Annular	X	1,500#
			Blind Ram	X	3,000#
			Pipe Ram	X	
			Double Ram		
			Other*		
6-1/8"	11"	5M	Annular	X	2,500#
			Blind Ram	X	5,000#
			Pipe Ram	X	
			Double Ram		
			Other*		

*Specify if additional ram is utilized.

BOP/BOPE will be tested by an independent service company to 250 psi low and the high pressure indicated above per Onshore Order 2 requirements. The System may be upgraded to a higher pressure but still tested to the working pressure listed in the table above. If the system is upgraded all the components installed will be functional and tested.

Pipe rams will be operationally checked each 24 hour period. Blind rams will be operationally checked on each trip out of the hole. These checks will be noted on the daily tour sheets. Other accessories to the BOP equipment will include a Kelly cock and floor safety valve (inside BOP) and choke lines and choke manifold. See attached schematics.

Mewbourne Oil Company, Fuller 13/12 B2ED Fed Com #1H

Sec 13, T26S, R29E

SL: 2,620' FSL & 500' FWL, Sec 13

BHL: 330' FNL & 660' FWL, Sec 12

X	Formation integrity test will be performed per Onshore Order #2. On Exploratory wells or on that portion of any well approved for a 5M BOPE system or greater, a pressure integrity test of each casing shoe shall be performed. Will be tested in accordance with Onshore Oil and Gas Order #2 III.B.1.i.
N	A variance is requested for the use of a flexible choke line from the BOP to Choke Manifold. See attached for specs and hydrostatic test chart.
	Are anchors required by manufacturer?
N	A multibowl wellhead is being used. The BOP will be tested per Onshore Order #2 after installation on the surface casing which will cover testing requirements for a maximum of 30 days. If any seal subject to test pressure is broken the system must be tested. <ul style="list-style-type: none"> • Provide description here See attached schematic.

5. Mud Program

Depth		Type	Weight (ppg)	Viscosity	Water Loss
From	To				
0	605'	FW Gel	8.6-8.8	28-34	N/C
605'	3,035'	Saturated Brine	10.0-10.2	28-34	N/C
3,035'	8,440'	Cut Brine	8.5-9.3	28-34	N/C
8,440'	16,539'	Cut Brine	9.3-10.0	28-34	N/C

Sufficient mud materials to maintain mud properties and meet minimum lost circulation and weight increase requirements will be kept on location at all times.

What will be used to monitor the loss or gain of fluid?	Visual Monitoring
---	-------------------

6. Logging and Testing Procedures

Logging, Coring and Testing.	
X	Will run GR/CNL from KOP (8,441') to surface (horizontal well – vertical portion of hole). Stated logs run will be in the Completion Report and submitted to the BLM.
	No Logs are planned based on well control or offset log information.
	Drill stem test? If yes, explain
	Coring? If yes, explain

Additional logs planned	Interval
X Gamma Ray	8,441' (KOP) to TD
Density	
CBL	
Mud log	
PEX	

Mewbourne Oil Company, Fuller 13/12 B2ED Fed Com #1H
Sec 13, T26S, R29E
SL: 2,620' FSL & 500' FWL, Sec 13
BHL: 330' FNL & 660' FWL, Sec 12

7. Drilling Conditions

Condition	Specify what type and where?
BH Pressure at deepest TVD	3,870 psi
Abnormal Temperature	No

Mitigation measure for abnormal conditions. Describe. Lost circulation material/sweeps/mud scavengers in surface hole.

Hydrogen Sulfide (H2S) monitors will be installed prior to drilling out the surface shoe. If H2S is detected in concentrations greater than 100 ppm, the operator will comply with the provisions of Onshore Oil and Gas Order #6. If Hydrogen Sulfide is encountered, measured values and formations will be provided to the BLM.

	H2S is present
X	H2S Plan attached

8. Water & Waste Volumes

Fresh Water Required: 33,000 bbl

Waste Water: 33,000 bbl

Waste Solids: 1,650 bbl

9. Other facets of operation

Is this a walking operation? If yes, describe.

Will be pre-setting casing? If yes, describe.

Attachments

___ Directional Plan

___ Other, describe

Hydrogen Sulfide Drilling Operations Plan
Mewbourne Oil Company

1. General Requirements

Rule 118 does not apply to this well because MOC has researched this area and no high concentrations of H₂S were found. MOC will have on location and working all H₂S safety equipment before the Delaware formation for purposes of safety and insurance requirements.

2. Hydrogen Sulfide Training

All personnel, whether regularly assigned, contracted, or employed on an unscheduled basis, will have received training from a qualified instructor in the following areas prior to entering the drilling pad area of the well:

1. The hazards and characteristics of hydrogen sulfide gas.
2. The proper use of personal protective equipment and life support systems.
3. The proper use of hydrogen sulfide detectors, alarms, warning systems, briefing areas, evacuation procedures.
4. The proper techniques for first aid and rescue operations.

Additionally, supervisory personnel will be trained in the following areas:

- 1 The effects of hydrogen sulfide on metal components. If high tensile tubular systems are utilized, supervisory personnel will be trained in their special maintenance requirements.
- 2 Corrective action and shut in procedures, blowout prevention, and well control procedures while drilling a well.
- 3 The contents of the Hydrogen Sulfide Drilling Operations Plan.

There will be an initial training session prior to encountering a known hydrogen sulfide source. The initial training session shall include a review of the site specific Hydrogen Sulfide Drilling Operations Plan.

3. Hydrogen Sulfide Safety Equipment and Systems

All hydrogen sulfide safety equipment and systems will be installed, tested, and operational prior to drilling below the 9 5/8" intermediate casing.

1. Well Control Equipment
 - A. Choke manifold with minimum of one adjustable choke/remote choke.
 - B. Blowout preventers equipped with blind rams and pipe rams to accommodate all pipe sizes with properly sized closing unit
 - C. Auxiliary equipment including annular type blowout preventer.
2. Protective Equipment for Essential Personnel

Thirty minute self contained work unit located in the dog house and at briefing areas.

Additionally: If H₂S is encountered in concentrations less than 10 ppm, fans will be placed in work areas to prevent the accumulation of hazardous amounts of poisonous gas. If higher concentrations of H₂S are detected the well will be shut in and a rotating head, mud/gas separator, remote choke and flare line with igniter will be installed.

3. Hydrogen Sulfide Protection and Monitoring Equipment

Two portable hydrogen sulfide monitors positioned on location for optimum coverage and detection. The units shall have audible sirens to notify personnel when hydrogen sulfide levels exceed 20 PPM.

4. Visual Warning Systems

A. Wind direction indicators as indicated on the wellsite diagram.

B. Caution signs shall be posted on roads providing access to location. Signs shall be painted a high visibility color with lettering of sufficient size to be readable at reasonable distances from potentially contaminated areas.

4. **Mud Program**

The mud program has been designed to minimize the amount of hydrogen sulfide entrained in the mud system. Proper mud weight, safe drilling practices, and the use of hydrogen sulfide scavengers will minimize hazards while drilling the well.

5. **Metallurgy**

All tubular systems, wellheads, blowout preventers, drilling spools, kill lines, choke manifolds, and valves shall be suitable for service in a hydrogen sulfide environment when chemically treated.

6. **Communications**

State & County Officials phone numbers are posted on rig floor and supervisors trailer. Communications in company vehicles and toolpushers are either two way radios or cellular phones.

7. **Well Testing**

Drill stem testing is not an anticipated requirement for evaluation of this well. If a drill stem test is required, it will be conducted with a minimum number of personnel in the immediate vicinity. The test will be conducted during daylight hours only.

8. **Emergency Phone Numbers**

Eddy County Sheriff's Office	911 or 575-887-7551
Ambulance Service	911 or 575-885-2111
Carlsbad Fire Dept	911 or 575-885-2111
Loco Hills Volunteer Fire Dept.	911 or 575-677-3266
Closest Medical Facility - Columbia Medical Center of Carlsbad	575-492-5000

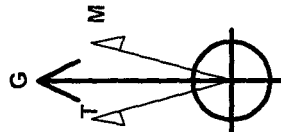
Mewbourne Oil Company	Hobbs District Office	575-393-5905
	Fax	575-397-6252
	2 nd Fax	575-393-7259

District Manager	Robin Terrell	575-390-4816
Drilling Superintendent	Frosty Lathan	575-390-4103
	Bradley Bishop	575-390-6838
Drilling Foreman	Wesley Noseff	575-441-0729

Mewbourne Oil Company

By: Charles Martin
15:56, November 18 2016

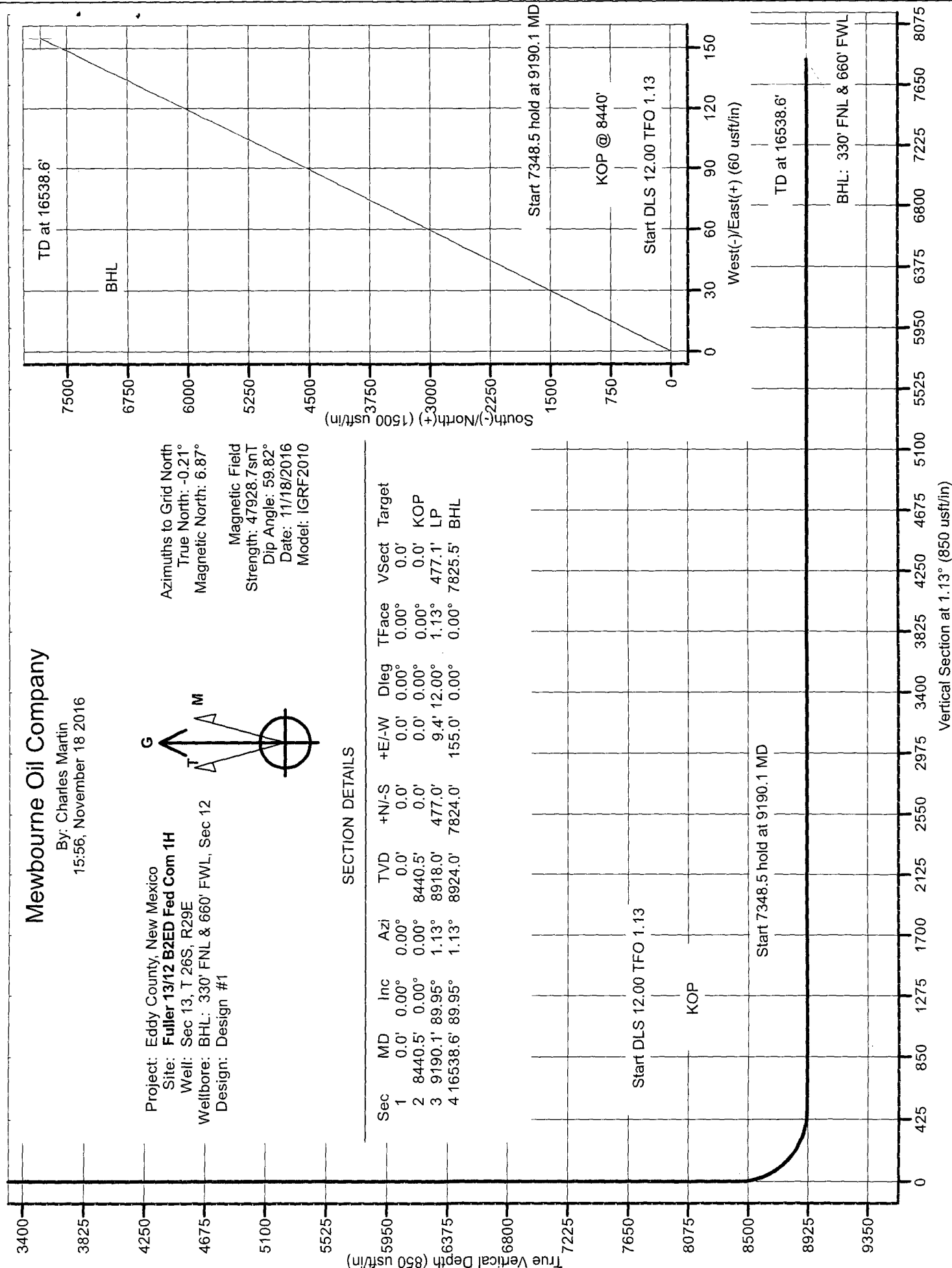
Project: Eddy County, New Mexico
Site: **Fuller 13/12 B2ED Fed Com 1H**
Well: Sec 13, T 26S, R 29E
Wellbore: BHL: 330' FNL & 660' FWL, Sec 12
Design: Design #1



Azimuths to Grid North
True North: -0.21°
Magnetic North: 6.87°
Magnetic Field
Strength: 47928.7snT
Dip Angle: 59.82°
Date: 11/18/2016
Model: IGRF2010

SECTION DETAILS

Sec	MD	Inc	Azi	TVD	+N/-S	+E/-W	Dleg	TFace	VSec	Target
1	0.0'	0.00°	0.00°	0.0'	0.0'	0.0'	0.00°	0.00°	0.0'	
2	8440.5'	0.00°	0.00°	8440.5'	0.0'	0.0'	0.00°	0.00°	0.0'	KOP
3	9190.1'	89.95°	1.13°	8918.0'	477.0'	9.4'	12.00°	1.13°	477.1'	LP
4	16538.6'	89.95°	1.13°	8924.0'	7824.0'	155.0'	0.00°	0.00°	7825.5'	BHL



Vertical Section at 1.13° (850 usft/in)

Mewbourne Oil Company

Eddy County, New Mexico

Fuller 13/12 B2ED Fed Com 1H

Sec 13, T 26S, R29E

SL: 2,620' FSL & 500' FWL, Sec 13

BHL: 330' FNL & 660' FWL, Sec 12

Plan: Design #1

Standard Planning Report

21 November, 2016

Planning Report

Database: Hobbs
Company: Mewbourne Oil Company
Project: Eddy County, New Mexico
Site: Fuller 13/12 B2ED Fed Com 1H
Well: Sec 13, T 26S, R29E
Wellbore: BHL: 330' FNL & 660' FWL, Sec 12
Design: Design #1

Local Co-ordinate Reference: Site Fuller 13/12 B2ED Fed Com 1H
TVD Reference: KB @ 2986.0usft
MD Reference: KB @ 2986.0usft
North Reference: Grid
Survey Calculation Method: Minimum Curvature

Project	Eddy County, New Mexico		
Map System:	US State Plane 1927 (Exact solution)	System Datum:	Mean Sea Level
Geo Datum:	NAD 1927 (NADCON CONUS)		
Map Zone:	New Mexico East 3001		

Site	Fuller 13/12 B2ED Fed Com 1H				
Site Position:		Northing:	379,085.00 usft	Latitude:	32° 2' 29.832 N
From:	Map	Easting:	620,805.00 usft	Longitude:	103° 56' 36.450 W
Position Uncertainty:	0.0 usft	Slot Radius:	13-3/16 "	Grid Convergence:	0.21 °

Well	Sec 13, T 26S, R29E					
Well Position	+N/-S	0.0 usft	Northing:	379,085.00 usft	Latitude:	32° 2' 29.832 N
	+E/-W	0.0 usft	Easting:	620,805.00 usft	Longitude:	103° 56' 36.450 W
Position Uncertainty		0.0 usft	Wellhead Elevation:	0.0 usft	Ground Level:	2,959.0 usft

Wellbore	BHL: 330' FNL & 660' FWL, Sec 12				
Magnetics	Model Name	Sample Date	Declination (°)	Dip Angle (°)	Field Strength (nT)
	IGRF2010	11/18/2016	7.08	59.82	47,929

Design	Design #1			
Audit Notes:				
Version:	Phase:	PROTOTYPE	Tie On Depth:	0.0
Vertical Section:	Depth From (TVD) (usft)	+N/-S (usft)	+E/-W (usft)	Direction (°)
	0.0	0.0	0.0	1.13

Plan Sections										
Measured Depth (usft)	Inclination (°)	Azimuth (°)	Vertical Depth (usft)	+N/-S (usft)	+E/-W (usft)	Dogleg Rate (°/100usft)	Build Rate (°/100usft)	Turn Rate (°/100usft)	TFO (°)	Target
0.0	0.00	0.00	0.0	0.0	0.0	0.00	0.00	0.00	0.00	
8,440.5	0.00	0.00	8,440.5	0.0	0.0	0.00	0.00	0.00	0.00	KOP @ 8440'
9,190.1	89.95	1.13	8,918.0	477.0	9.4	12.00	12.00	0.15	1.13	
16,538.6	89.95	1.13	8,924.0	7,824.0	155.0	0.00	0.00	0.00	0.00	BHL: 330' FNL & 660'

Planning Report

Database: Hobbs
Company: Mewbourne Oil Company
Project: Eddy County, New Mexico
Site: Fuller 13/12 B2ED Fed Com 1H
Well: Sec 13, T 26S, R29E
Wellbore: BHL: 330' FNL & 660' FWL, Sec 12
Design: Design #1

Local Co-ordinate Reference: Site Fuller 13/12 B2ED Fed Com 1H
TVD Reference: KB @ 2986.0usft
MD Reference: KB @ 2986.0usft
North Reference: Grid
Survey Calculation Method: Minimum Curvature

Planned Survey

Measured Depth (usft)	Inclination (°)	Azimuth (°)	Vertical Depth (usft)	+N/-S (usft)	+E/-W (usft)	Vertical Section (usft)	Dogleg Rate (°/100usft)	Build Rate (°/100usft)	Turn Rate (°/100usft)
0.0	0.00	0.00	0.0	0.0	0.0	0.0	0.00	0.00	0.00
100.0	0.00	0.00	100.0	0.0	0.0	0.0	0.00	0.00	0.00
200.0	0.00	0.00	200.0	0.0	0.0	0.0	0.00	0.00	0.00
300.0	0.00	0.00	300.0	0.0	0.0	0.0	0.00	0.00	0.00
400.0	0.00	0.00	400.0	0.0	0.0	0.0	0.00	0.00	0.00
500.0	0.00	0.00	500.0	0.0	0.0	0.0	0.00	0.00	0.00
600.0	0.00	0.00	600.0	0.0	0.0	0.0	0.00	0.00	0.00
700.0	0.00	0.00	700.0	0.0	0.0	0.0	0.00	0.00	0.00
800.0	0.00	0.00	800.0	0.0	0.0	0.0	0.00	0.00	0.00
900.0	0.00	0.00	900.0	0.0	0.0	0.0	0.00	0.00	0.00
1,000.0	0.00	0.00	1,000.0	0.0	0.0	0.0	0.00	0.00	0.00
1,100.0	0.00	0.00	1,100.0	0.0	0.0	0.0	0.00	0.00	0.00
1,200.0	0.00	0.00	1,200.0	0.0	0.0	0.0	0.00	0.00	0.00
1,300.0	0.00	0.00	1,300.0	0.0	0.0	0.0	0.00	0.00	0.00
1,400.0	0.00	0.00	1,400.0	0.0	0.0	0.0	0.00	0.00	0.00
1,500.0	0.00	0.00	1,500.0	0.0	0.0	0.0	0.00	0.00	0.00
1,600.0	0.00	0.00	1,600.0	0.0	0.0	0.0	0.00	0.00	0.00
1,700.0	0.00	0.00	1,700.0	0.0	0.0	0.0	0.00	0.00	0.00
1,800.0	0.00	0.00	1,800.0	0.0	0.0	0.0	0.00	0.00	0.00
1,900.0	0.00	0.00	1,900.0	0.0	0.0	0.0	0.00	0.00	0.00
2,000.0	0.00	0.00	2,000.0	0.0	0.0	0.0	0.00	0.00	0.00
2,100.0	0.00	0.00	2,100.0	0.0	0.0	0.0	0.00	0.00	0.00
2,200.0	0.00	0.00	2,200.0	0.0	0.0	0.0	0.00	0.00	0.00
2,300.0	0.00	0.00	2,300.0	0.0	0.0	0.0	0.00	0.00	0.00
2,400.0	0.00	0.00	2,400.0	0.0	0.0	0.0	0.00	0.00	0.00
2,500.0	0.00	0.00	2,500.0	0.0	0.0	0.0	0.00	0.00	0.00
2,600.0	0.00	0.00	2,600.0	0.0	0.0	0.0	0.00	0.00	0.00
2,700.0	0.00	0.00	2,700.0	0.0	0.0	0.0	0.00	0.00	0.00
2,800.0	0.00	0.00	2,800.0	0.0	0.0	0.0	0.00	0.00	0.00
2,900.0	0.00	0.00	2,900.0	0.0	0.0	0.0	0.00	0.00	0.00
3,000.0	0.00	0.00	3,000.0	0.0	0.0	0.0	0.00	0.00	0.00
3,100.0	0.00	0.00	3,100.0	0.0	0.0	0.0	0.00	0.00	0.00
3,200.0	0.00	0.00	3,200.0	0.0	0.0	0.0	0.00	0.00	0.00
3,300.0	0.00	0.00	3,300.0	0.0	0.0	0.0	0.00	0.00	0.00
3,400.0	0.00	0.00	3,400.0	0.0	0.0	0.0	0.00	0.00	0.00
3,500.0	0.00	0.00	3,500.0	0.0	0.0	0.0	0.00	0.00	0.00
3,600.0	0.00	0.00	3,600.0	0.0	0.0	0.0	0.00	0.00	0.00
3,700.0	0.00	0.00	3,700.0	0.0	0.0	0.0	0.00	0.00	0.00
3,800.0	0.00	0.00	3,800.0	0.0	0.0	0.0	0.00	0.00	0.00
3,900.0	0.00	0.00	3,900.0	0.0	0.0	0.0	0.00	0.00	0.00
4,000.0	0.00	0.00	4,000.0	0.0	0.0	0.0	0.00	0.00	0.00
4,100.0	0.00	0.00	4,100.0	0.0	0.0	0.0	0.00	0.00	0.00
4,200.0	0.00	0.00	4,200.0	0.0	0.0	0.0	0.00	0.00	0.00
4,300.0	0.00	0.00	4,300.0	0.0	0.0	0.0	0.00	0.00	0.00
4,400.0	0.00	0.00	4,400.0	0.0	0.0	0.0	0.00	0.00	0.00
4,500.0	0.00	0.00	4,500.0	0.0	0.0	0.0	0.00	0.00	0.00
4,600.0	0.00	0.00	4,600.0	0.0	0.0	0.0	0.00	0.00	0.00
4,700.0	0.00	0.00	4,700.0	0.0	0.0	0.0	0.00	0.00	0.00
4,800.0	0.00	0.00	4,800.0	0.0	0.0	0.0	0.00	0.00	0.00
4,900.0	0.00	0.00	4,900.0	0.0	0.0	0.0	0.00	0.00	0.00
5,000.0	0.00	0.00	5,000.0	0.0	0.0	0.0	0.00	0.00	0.00
5,100.0	0.00	0.00	5,100.0	0.0	0.0	0.0	0.00	0.00	0.00
5,200.0	0.00	0.00	5,200.0	0.0	0.0	0.0	0.00	0.00	0.00
5,300.0	0.00	0.00	5,300.0	0.0	0.0	0.0	0.00	0.00	0.00

Planning Report

Database: Hobbs
Company: Mewbourne Oil Company
Project: Eddy County, New Mexico
Site: Fuller 13/12 B2ED Fed Com 1H
Well: Sec 13, T 26S, R29E
Wellbore: BHL: 330' FNL & 660' FWL, Sec 12
Design: Design #1

Local Co-ordinate Reference: Site Fuller 13/12 B2ED Fed Com 1H
TVD Reference: KB @ 2986.0usft
MD Reference: KB @ 2986.0usft
North Reference: Grid
Survey Calculation Method: Minimum Curvature

Planned Survey

Measured Depth (usft)	Inclination (°)	Azimuth (°)	Vertical Depth (usft)	+N/-S (usft)	+E/-W (usft)	Vertical Section (usft)	Dogleg Rate (°/100usft)	Build Rate (°/100usft)	Turn Rate (°/100usft)
5,400.0	0.00	0.00	5,400.0	0.0	0.0	0.0	0.00	0.00	0.00
5,500.0	0.00	0.00	5,500.0	0.0	0.0	0.0	0.00	0.00	0.00
5,600.0	0.00	0.00	5,600.0	0.0	0.0	0.0	0.00	0.00	0.00
5,700.0	0.00	0.00	5,700.0	0.0	0.0	0.0	0.00	0.00	0.00
5,800.0	0.00	0.00	5,800.0	0.0	0.0	0.0	0.00	0.00	0.00
5,900.0	0.00	0.00	5,900.0	0.0	0.0	0.0	0.00	0.00	0.00
6,000.0	0.00	0.00	6,000.0	0.0	0.0	0.0	0.00	0.00	0.00
6,100.0	0.00	0.00	6,100.0	0.0	0.0	0.0	0.00	0.00	0.00
6,200.0	0.00	0.00	6,200.0	0.0	0.0	0.0	0.00	0.00	0.00
6,300.0	0.00	0.00	6,300.0	0.0	0.0	0.0	0.00	0.00	0.00
6,400.0	0.00	0.00	6,400.0	0.0	0.0	0.0	0.00	0.00	0.00
6,500.0	0.00	0.00	6,500.0	0.0	0.0	0.0	0.00	0.00	0.00
6,600.0	0.00	0.00	6,600.0	0.0	0.0	0.0	0.00	0.00	0.00
6,700.0	0.00	0.00	6,700.0	0.0	0.0	0.0	0.00	0.00	0.00
6,800.0	0.00	0.00	6,800.0	0.0	0.0	0.0	0.00	0.00	0.00
6,900.0	0.00	0.00	6,900.0	0.0	0.0	0.0	0.00	0.00	0.00
7,000.0	0.00	0.00	7,000.0	0.0	0.0	0.0	0.00	0.00	0.00
7,100.0	0.00	0.00	7,100.0	0.0	0.0	0.0	0.00	0.00	0.00
7,200.0	0.00	0.00	7,200.0	0.0	0.0	0.0	0.00	0.00	0.00
7,300.0	0.00	0.00	7,300.0	0.0	0.0	0.0	0.00	0.00	0.00
7,400.0	0.00	0.00	7,400.0	0.0	0.0	0.0	0.00	0.00	0.00
7,500.0	0.00	0.00	7,500.0	0.0	0.0	0.0	0.00	0.00	0.00
7,600.0	0.00	0.00	7,600.0	0.0	0.0	0.0	0.00	0.00	0.00
7,700.0	0.00	0.00	7,700.0	0.0	0.0	0.0	0.00	0.00	0.00
7,800.0	0.00	0.00	7,800.0	0.0	0.0	0.0	0.00	0.00	0.00
7,900.0	0.00	0.00	7,900.0	0.0	0.0	0.0	0.00	0.00	0.00
8,000.0	0.00	0.00	8,000.0	0.0	0.0	0.0	0.00	0.00	0.00
8,100.0	0.00	0.00	8,100.0	0.0	0.0	0.0	0.00	0.00	0.00
8,200.0	0.00	0.00	8,200.0	0.0	0.0	0.0	0.00	0.00	0.00
8,300.0	0.00	0.00	8,300.0	0.0	0.0	0.0	0.00	0.00	0.00
8,400.0	0.00	0.00	8,400.0	0.0	0.0	0.0	0.00	0.00	0.00
8,440.5	0.00	0.00	8,440.5	0.0	0.0	0.0	0.00	0.00	0.00
KOP @ 8440'									
8,500.0	7.14	1.13	8,499.8	3.7	0.1	3.7	12.00	12.00	0.00
8,600.0	19.14	1.13	8,597.0	26.4	0.5	26.4	12.00	12.00	0.00
8,700.0	31.14	1.13	8,687.4	68.8	1.4	68.8	12.00	12.00	0.00
8,800.0	43.14	1.13	8,767.0	129.0	2.6	129.1	12.00	12.00	0.00
8,900.0	55.14	1.13	8,832.3	204.5	4.1	204.6	12.00	12.00	0.00
9,000.0	67.14	1.13	8,880.5	291.9	5.8	292.0	12.00	12.00	0.00
9,100.0	79.14	1.13	8,909.4	387.4	7.7	387.5	12.00	12.00	0.00
9,190.1	89.95	1.13	8,918.0	477.0	9.4	477.1	12.00	12.00	0.00
9,200.0	89.95	1.13	8,918.0	486.9	9.6	487.0	0.00	0.00	0.00
9,300.0	89.95	1.13	8,918.1	586.8	11.6	587.0	0.00	0.00	0.00
9,400.0	89.95	1.13	8,918.1	686.8	13.6	687.0	0.00	0.00	0.00
9,500.0	89.95	1.13	8,918.2	786.8	15.6	787.0	0.00	0.00	0.00
9,600.0	89.95	1.13	8,918.3	886.8	17.6	887.0	0.00	0.00	0.00
9,700.0	89.95	1.13	8,918.4	986.8	19.5	987.0	0.00	0.00	0.00
9,800.0	89.95	1.13	8,918.5	1,086.8	21.5	1,087.0	0.00	0.00	0.00
9,900.0	89.95	1.13	8,918.5	1,186.7	23.5	1,187.0	0.00	0.00	0.00
10,000.0	89.95	1.13	8,918.6	1,286.7	25.5	1,287.0	0.00	0.00	0.00
10,100.0	89.95	1.13	8,918.7	1,386.7	27.5	1,387.0	0.00	0.00	0.00
10,200.0	89.95	1.13	8,918.8	1,486.7	29.5	1,487.0	0.00	0.00	0.00
10,300.0	89.95	1.13	8,918.9	1,586.7	31.4	1,587.0	0.00	0.00	0.00

Planning Report

Database: Hobbs
Company: Mewbourne Oil Company
Project: Eddy County, New Mexico
Site: Fuller 13/12 B2ED Fed Com 1H
Well: Sec 13, T 26S, R29E
Wellbore: BHL: 330' FNL & 660' FWL, Sec 12
Design: Design #1

Local Co-ordinate Reference: Site Fuller 13/12 B2ED Fed Com 1H
TVD Reference: KB @ 2986.0usft
MD Reference: KB @ 2986.0usft
North Reference: Grid
Survey Calculation Method: Minimum Curvature

Planned Survey

Measured Depth (usft)	Inclination (°)	Azimuth (°)	Vertical Depth (usft)	+N/-S (usft)	+E/-W (usft)	Vertical Section (usft)	Dogleg Rate (°/100usft)	Build Rate (°/100usft)	Turn Rate (°/100usft)
10,400.0	89.95	1.13	8,919.0	1,686.6	33.4	1,687.0	0.00	0.00	0.00
10,500.0	89.95	1.13	8,919.0	1,786.6	35.4	1,787.0	0.00	0.00	0.00
10,600.0	89.95	1.13	8,919.1	1,886.6	37.4	1,887.0	0.00	0.00	0.00
10,700.0	89.95	1.13	8,919.2	1,986.6	39.4	1,987.0	0.00	0.00	0.00
10,800.0	89.95	1.13	8,919.3	2,086.6	41.3	2,087.0	0.00	0.00	0.00
10,900.0	89.95	1.13	8,919.4	2,186.5	43.3	2,187.0	0.00	0.00	0.00
11,000.0	89.95	1.13	8,919.5	2,286.5	45.3	2,287.0	0.00	0.00	0.00
11,100.0	89.95	1.13	8,919.5	2,386.5	47.3	2,387.0	0.00	0.00	0.00
11,200.0	89.95	1.13	8,919.6	2,486.5	49.3	2,487.0	0.00	0.00	0.00
11,300.0	89.95	1.13	8,919.7	2,586.5	51.2	2,587.0	0.00	0.00	0.00
11,400.0	89.95	1.13	8,919.8	2,686.4	53.2	2,687.0	0.00	0.00	0.00
11,500.0	89.95	1.13	8,919.9	2,786.4	55.2	2,787.0	0.00	0.00	0.00
11,600.0	89.95	1.13	8,919.9	2,886.4	57.2	2,887.0	0.00	0.00	0.00
11,700.0	89.95	1.13	8,920.0	2,986.4	59.2	2,987.0	0.00	0.00	0.00
11,800.0	89.95	1.13	8,920.1	3,086.4	61.1	3,087.0	0.00	0.00	0.00
11,900.0	89.95	1.13	8,920.2	3,186.3	63.1	3,187.0	0.00	0.00	0.00
12,000.0	89.95	1.13	8,920.3	3,286.3	65.1	3,287.0	0.00	0.00	0.00
12,100.0	89.95	1.13	8,920.4	3,386.3	67.1	3,387.0	0.00	0.00	0.00
12,200.0	89.95	1.13	8,920.4	3,486.3	69.1	3,487.0	0.00	0.00	0.00
12,300.0	89.95	1.13	8,920.5	3,586.3	71.0	3,587.0	0.00	0.00	0.00
12,400.0	89.95	1.13	8,920.6	3,686.2	73.0	3,687.0	0.00	0.00	0.00
12,500.0	89.95	1.13	8,920.7	3,786.2	75.0	3,787.0	0.00	0.00	0.00
12,600.0	89.95	1.13	8,920.8	3,886.2	77.0	3,887.0	0.00	0.00	0.00
12,700.0	89.95	1.13	8,920.8	3,986.2	79.0	3,987.0	0.00	0.00	0.00
12,800.0	89.95	1.13	8,920.9	4,086.2	81.0	4,087.0	0.00	0.00	0.00
12,900.0	89.95	1.13	8,921.0	4,186.1	82.9	4,187.0	0.00	0.00	0.00
13,000.0	89.95	1.13	8,921.1	4,286.1	84.9	4,287.0	0.00	0.00	0.00
13,100.0	89.95	1.13	8,921.2	4,386.1	86.9	4,387.0	0.00	0.00	0.00
13,200.0	89.95	1.13	8,921.3	4,486.1	88.9	4,487.0	0.00	0.00	0.00
13,300.0	89.95	1.13	8,921.3	4,586.1	90.9	4,587.0	0.00	0.00	0.00
13,400.0	89.95	1.13	8,921.4	4,686.0	92.8	4,687.0	0.00	0.00	0.00
13,500.0	89.95	1.13	8,921.5	4,786.0	94.8	4,787.0	0.00	0.00	0.00
13,600.0	89.95	1.13	8,921.6	4,886.0	96.8	4,887.0	0.00	0.00	0.00
13,700.0	89.95	1.13	8,921.7	4,986.0	98.8	4,987.0	0.00	0.00	0.00
13,800.0	89.95	1.13	8,921.8	5,086.0	100.8	5,087.0	0.00	0.00	0.00
13,900.0	89.95	1.13	8,921.8	5,185.9	102.7	5,187.0	0.00	0.00	0.00
14,000.0	89.95	1.13	8,921.9	5,285.9	104.7	5,287.0	0.00	0.00	0.00
14,100.0	89.95	1.13	8,922.0	5,385.9	106.7	5,387.0	0.00	0.00	0.00
14,200.0	89.95	1.13	8,922.1	5,485.9	108.7	5,487.0	0.00	0.00	0.00
14,300.0	89.95	1.13	8,922.2	5,585.9	110.7	5,587.0	0.00	0.00	0.00
14,400.0	89.95	1.13	8,922.2	5,685.8	112.6	5,687.0	0.00	0.00	0.00
14,500.0	89.95	1.13	8,922.3	5,785.8	114.6	5,787.0	0.00	0.00	0.00
14,600.0	89.95	1.13	8,922.4	5,885.8	116.6	5,887.0	0.00	0.00	0.00
14,700.0	89.95	1.13	8,922.5	5,985.8	118.6	5,987.0	0.00	0.00	0.00
14,800.0	89.95	1.13	8,922.6	6,085.8	120.6	6,087.0	0.00	0.00	0.00
14,900.0	89.95	1.13	8,922.7	6,185.7	122.5	6,187.0	0.00	0.00	0.00
15,000.0	89.95	1.13	8,922.7	6,285.7	124.5	6,287.0	0.00	0.00	0.00
15,100.0	89.95	1.13	8,922.8	6,385.7	126.5	6,387.0	0.00	0.00	0.00
15,200.0	89.95	1.13	8,922.9	6,485.7	128.5	6,487.0	0.00	0.00	0.00
15,300.0	89.95	1.13	8,923.0	6,585.7	130.5	6,587.0	0.00	0.00	0.00
15,400.0	89.95	1.13	8,923.1	6,685.7	132.4	6,687.0	0.00	0.00	0.00
15,500.0	89.95	1.13	8,923.1	6,785.6	134.4	6,787.0	0.00	0.00	0.00
15,600.0	89.95	1.13	8,923.2	6,885.6	136.4	6,887.0	0.00	0.00	0.00
15,700.0	89.95	1.13	8,923.3	6,985.6	138.4	6,987.0	0.00	0.00	0.00

Planning Report

Database: Hobbs
Company: Mewbourne Oil Company
Project: Eddy County, New Mexico
Site: Fuller 13/12 B2ED Fed Com 1H
Well: Sec 13, T 26S, R29E
Wellbore: BHL: 330' FNL & 660' FWL, Sec 12
Design: Design #1

Local Co-ordinate Reference: Site Fuller 13/12 B2ED Fed Com 1H
TVD Reference: KB @ 2986.0usft
MD Reference: KB @ 2986.0usft
North Reference: Grid
Survey Calculation Method: Minimum Curvature

Planned Survey

Measured Depth (usft)	Inclination (°)	Azimuth (°)	Vertical Depth (usft)	+N/-S (usft)	+E/-W (usft)	Vertical Section (usft)	Dogleg Rate (°/100usft)	Build Rate (°/100usft)	Turn Rate (°/100usft)
15,800.0	89.95	1.13	8,923.4	7,085.6	140.4	7,087.0	0.00	0.00	0.00
15,900.0	89.95	1.13	8,923.5	7,185.6	142.4	7,187.0	0.00	0.00	0.00
16,000.0	89.95	1.13	8,923.6	7,285.5	144.3	7,287.0	0.00	0.00	0.00
16,100.0	89.95	1.13	8,923.6	7,385.5	146.3	7,387.0	0.00	0.00	0.00
16,200.0	89.95	1.13	8,923.7	7,485.5	148.3	7,487.0	0.00	0.00	0.00
16,300.0	89.95	1.13	8,923.8	7,585.5	150.3	7,587.0	0.00	0.00	0.00
16,400.0	89.95	1.13	8,923.9	7,685.5	152.3	7,687.0	0.00	0.00	0.00
16,500.0	89.95	1.13	8,924.0	7,785.4	154.2	7,787.0	0.00	0.00	0.00
16,538.6	89.95	1.13	8,924.0	7,824.0	155.0	7,825.5	0.00	0.00	0.00

BHL: 330' FNL & 660' FWL

Design Targets

Target Name - hit/miss target - Shape	Dip Angle (°)	Dip Dir. (°)	TVD (usft)	+N/-S (usft)	+E/-W (usft)	Northing (usft)	Easting (usft)	Latitude	Longitude
KOP @ 8440' - plan hits target center - Point	0.00	0.01	8,440.5	0.0	0.0	379,085.00	620,805.00	32° 2' 29.832 N	103° 56' 36.450 W
BHL: 330' FNL & 660' F - plan hits target center - Point	0.00	0.00	8,924.0	7,824.0	155.0	386,909.00	620,960.00	32° 3' 47.256 N	103° 56' 34.320 W

APD ID: 10400008163

Submission Date: 11/22/2016

Highlighted data
reflects the most
recent changes

Operator Name: MEWBOURNE OIL COMPANY

Well Name: FULLER 13/12 B2ED FED COM

Well Number: 1H

[Show Final Text](#)

Well Type: CONVENTIONAL GAS WELL

Well Work Type: Drill

Section 1 - Existing Roads

Will existing roads be used? YES

Existing Road Map:

Fuller 13 12 B2ED Fed Com 1H_existingroadmap_11-21-2016.pdf

Existing Road Purpose: ACCESS,FLUID TRANSPORT

Row(s) Exist? NO

ROW ID(s)

ID:

Do the existing roads need to be improved? NO

Existing Road Improvement Description:

Existing Road Improvement Attachment:

Section 2 - New or Reconstructed Access Roads

Will new roads be needed? NO

Section 3 - Location of Existing Wells

Existing Wells Map? YES

Attach Well map:

Fuller 13 12 B2ED Fed Com 1H_existingwellmap_11-21-2016.pdf

Operator Name: MEWBOURNE OIL COMPANY

Well Name: FULLER 13/12 B2ED FED COM

Well Number: 1H

Existing Wells description:

Section 4 - Location of Existing and/or Proposed Production Facilities

Submit or defer a Proposed Production Facilities plan? SUBMIT

Estimated Production Facilities description:

Production Facilities description: a. All permanent, lasting more than 6 months, above ground structures including but not limited to pumpjacks, storage tanks, pipeline risers, meter housing, etc. that are not subject to safety requirements will be painted a non-reflective paint color that blends in with the surrounding landscape. The paint color will be one of the colors from the BLM Standard Environmental Colors chart selected by the BLM authorized officer. b. All proposed production facilities that are located on the well pad will be strategically placed to allow for maximum interim reclamation, recontouring, and revegetation of the well location. c. Production from the proposed well will be located on the East edge of location. d. If any plans change regarding the production facility or other infrastructure (pipeline, electric line, etc.), we will submit a sundry notice or right of way (if applicable) prior to installation of construction. e. An electric line will be applied for through a sundry notice or BLM right of way at a later date

Production Facilities map:

Fuller 13 12 B2ED Fed Com 1H_productionfacilitymap_11-21-2016.pdf

Section 5 - Location and Types of Water Supply

Water Source Table

Water source use type: DUST CONTROL,
INTERMEDIATE/PRODUCTION CASING, STIMULATION, SURFACE
CASING

Describe type:

Source latitude: 32.04928

Source datum: NAD83

Water source permit type: WATER WELL

Source land ownership: FEDERAL

Water source transport method: TRUCKING

Source transportation land ownership: COMMERCIAL

Water source volume (barrels): 2014

Source volume (gal): 84588

Water source type: IRRIGATION

Source longitude: -104.05763

Source volume (acre-feet): 0.2595907

Water source use type: DUST CONTROL,
INTERMEDIATE/PRODUCTION CASING, STIMULATION, SURFACE
CASING

Describe type:

Source latitude: 31.998123

Source datum: NAD83

Water source permit type: WATER WELL

Source land ownership: PRIVATE

Water source type: IRRIGATION

Source longitude: -103.94242

Operator Name: MEWBORNE OIL COMPANY

Well Name: FULLER 13/12 B2ED FED COM

Well Number: 1H

Water source transport method: TRUCKING

Source transportation land ownership: COMMERCIAL

Water source volume (barrels): 2014

Source volume (acre-feet): 0.2595907

Source volume (gal): 84588

Water source and transportation map:

Fuller 13 12 B2ED Fed Com 1H_watersourceandtransportationmap_11-22-2016.pdf

Fuller 13 12 B2ED Fed Com 1H_watersourceandtransportationmap2_11-22-2016.pdf

Water source comments:

New water well? NO

New Water Well Info

Well latitude:

Well Longitude:

Well datum:

Well target aquifer:

Est. depth to top of aquifer(ft):

Est thickness of aquifer:

Aquifer comments:

Aquifer documentation:

Well depth (ft):

Well casing type:

Well casing outside diameter (in.):

Well casing inside diameter (in.):

New water well casing?

Used casing source:

Drilling method:

Drill material:

Grout material:

Grout depth:

Casing length (ft.):

Casing top depth (ft.):

Well Production type:

Completion Method:

Water well additional information:

State appropriation permit:

Additional information attachment:

Section 6 - Construction Materials

Construction Materials description: Caliche - both sources shown on one map.

Construction Materials source location attachment:

Fuller 13 12 B2ED Fed Com 1H_calichesourceandtransportationmap_11-22-2016.pdf

Operator Name: MEWBOURNE OIL COMPANY

Well Name: FULLER 13/12 B2ED FED COM

Well Number: 1H

Section 7 - Methods for Handling Waste

Waste type: SEWAGE

Waste content description: Human waste & grey water

Amount of waste: 1500 gallons

Waste disposal frequency : Weekly

Safe containment description: 2,000 gallon plastic container

Safe containmant attachment:

Waste disposal type: HAUL TO COMMERCIAL FACILITY **Disposal location ownership:** PRIVATE

Disposal type description:

Disposal location description: City of Carlsbad Water Treatment facility

Waste type: GARBAGE

Waste content description: Garbage & trash

Amount of waste: 1500 pounds

Waste disposal frequency : One Time Only

Safe containment description: Enclosed trash trailer

Safe containmant attachment:

Waste disposal type: HAUL TO COMMERCIAL FACILITY **Disposal location ownership:** PRIVATE

Disposal type description:

Disposal location description: Waste Management facility in Carlsbad.

Waste type: DRILLING

Waste content description: Drill cuttings

Amount of waste: 940 barrels

Waste disposal frequency : One Time Only

Safe containment description: Drill cuttings will be properly contained in steel tanks (20 yard roll off bins.)

Safe containmant attachment:

Waste disposal type: HAUL TO COMMERCIAL FACILITY **Disposal location ownership:** PRIVATE

Disposal type description:

Disposal location description: NMOCD approved waste disposal locations are CRI or Lea Land, both facilities are located on HWY 62/180, Sec. 27 T20S R32E.

Reserve Pit

Operator Name: MEWBOURNE OIL COMPANY

Well Name: FULLER 13/12 B2ED FED COM

Well Number: 1H

Reserve Pit being used? NO

Temporary disposal of produced water into reserve pit?

Reserve pit length (ft.)

Reserve pit width (ft.)

Reserve pit depth (ft.)

Reserve pit volume (cu. yd.)

Is at least 50% of the reserve pit in cut?

Reserve pit liner

Reserve pit liner specifications and installation description

Cuttings Area

Cuttings Area being used? NO

Are you storing cuttings on location? NO

Description of cuttings location

Cuttings area length (ft.)

Cuttings area width (ft.)

Cuttings area depth (ft.)

Cuttings area volume (cu. yd.)

Is at least 50% of the cuttings area in cut?

WCuttings area liner

Cuttings area liner specifications and installation description

Section 8 - Ancillary Facilities

Are you requesting any Ancillary Facilities?: NO

Ancillary Facilities attachment:

Comments:

Section 9 - Well Site Layout

Well Site Layout Diagram:

Fuller 13 12 B2ED Fed Com 1H_wellsitelayout_11-22-2016.pdf

Comments:

Operator Name: MEWBOURNE OIL COMPANY

Well Name: FULLER 13/12 B2ED FED COM

Well Number: 1H

Section 10 - Plans for Surface Reclamation

Type of disturbance: NEW

Recontouring attachment:

Drainage/Erosion control construction: None

Drainage/Erosion control reclamation: None

Wellpad long term disturbance (acres): 1.414

Wellpad short term disturbance (acres): 2.65

Access road long term disturbance (acres): 0

Access road short term disturbance (acres): 0

Pipeline long term disturbance (acres): 0

Pipeline short term disturbance (acres): 0

Other long term disturbance (acres): 0

Other short term disturbance (acres): 0

Total long term disturbance: 1.414

Total short term disturbance: 2.65

Reconstruction method: The areas planned for interim reclamation will then be recontoured to the original contour if feasible, or if not feasible, to an interim contour that blends with the surrounding topography as much as possible. Where applicable, the fill material of the well pad will be backfilled into the cut to bring the area back to the original contour. The interim cut and fill slopes prior to re-seeding will not be steeper than a 3:1 ratio, unless the adjacent native topography is steeper. Note: Constructed slopes may be much steeper during drilling, but will be recontoured to the above ratios during interim reclamation.

Topsoil redistribution: Topsoil will be evenly respread and aggressively revegetated over the entire disturbed area not needed for all-weather operations including cuts & fills. To seed the area, the proper BLM seed mixture, free of noxious weeds, will be used.

Soil treatment: NA

Existing Vegetation at the well pad: Various brush & grasses

Existing Vegetation at the well pad attachment:

Existing Vegetation Community at the road: Various brush & grasses

Existing Vegetation Community at the road attachment:

Existing Vegetation Community at the pipeline: NA

Existing Vegetation Community at the pipeline attachment:

Existing Vegetation Community at other disturbances: NA

Existing Vegetation Community at other disturbances attachment:

Non native seed used? NO

Non native seed description:

Seedling transplant description:

Will seedlings be transplanted for this project? NO

Seedling transplant description attachment:

Will seed be harvested for use in site reclamation? NO

Seed harvest description:

Seed harvest description attachment:

Operator Name: MEWBOURNE OIL COMPANY

Well Name: FULLER 13/12 B2ED FED COM

Well Number: 1H

Seed Management

Seed Table

Seed type:

Seed source:

Seed name:

Source name:

Source address:

Source phone:

Seed cultivar:

Seed use location:

PLS pounds per acre:

Proposed seeding season:

Seed Summary

Total pounds/Acre:

Seed Type	Pounds/Acre
-----------	-------------

Seed reclamation attachment:

Operator Contact/Responsible Official Contact Info

First Name: Bradley

Last Name: Bishop

Phone: (575)393-5905

Email: bbishop@mewbourne.com

Seedbed prep: Final seedbed preparation will consist of contour cultivating to a depth of 4 to 6 inches within 24 hours prior to seeding, dozer tracking, or other imprinting in order to break the soil crust and create seed germination micro-sites.

Seed BMP: To seed the area, the proper BLM seed mixture, free of noxious weeds, will be used.

Seed method: drilling or broadcasting seed over entire reclaimed area.

Existing invasive species? NO

Existing invasive species treatment description:

Existing invasive species treatment attachment:

Weed treatment plan description: NA

Weed treatment plan attachment:

Monitoring plan description: vii. All reclaimed areas will be monitored periodically to ensure that revegetation occurs, that the area is not redisturbed, and that erosion and invasive/noxious weeds are controlled.

Monitoring plan attachment:

Success standards: regrowth within 1 full growing season of reclamation.

Pit closure description: NA

Pit closure attachment:

Section 11 - Surface Ownership

Operator Name: MEWBOURNE OIL COMPANY

Well Name: FULLER 13/12 B2ED FED COM

Well Number: 1H

Disturbance type: EXISTING ACCESS ROAD

Describe:

Surface Owner: BUREAU OF LAND MANAGEMENT

Other surface owner description:

BIA Local Office:

BOR Local Office:

COE Local Office:

DOD Local Office:

NPS Local Office:

State Local Office:

Military Local Office:

USFWS Local Office:

Other Local Office:

USFS Region:

USFS Forest/Grassland:

USFS Ranger District:

Fee Owner: Pecos Valley Artesian Conservation District

Phone: (575)622-7000

Fee Owner Address: PO Box 1346 Roswell NM 88202

Email:

Surface use plan certification: NO

Surface use plan certification document:

Surface access agreement or bond: Agreement

Surface Access Agreement Need description: SUA in place

Surface Access Bond BLM or Forest Service:

BLM Surface Access Bond number:

USFS Surface access bond number:

Disturbance type: WELL PAD

Describe:

Surface Owner: BUREAU OF LAND MANAGEMENT

Other surface owner description:

BIA Local Office:

Operator Name: MEWBOURNE OIL COMPANY

Well Name: FULLER 13/12 B2ED FED COM

Well Number: 1H

BOR Local Office:

COE Local Office:

DOD Local Office:

NPS Local Office:

State Local Office:

Military Local Office:

USFWS Local Office:

Other Local Office:

USFS Region:

USFS Forest/Grassland:

USFS Ranger District:

Fee Owner: Pecos Valley Artesian Conservation District

Phone: (575)622-7000

Fee Owner Address: PO Box 1346 Roswell NM 88202

Email:

Surface use plan certification: NO

Surface use plan certification document:

Surface access agreement or bond: Agreement

Surface Access Agreement Need description: SUA in place

Surface Access Bond BLM or Forest Service:

BLM Surface Access Bond number:

USFS Surface access bond number:

Section 12 - Other Information

Right of Way needed? NO

Use APD as ROW?

ROW Type(s):

ROW Applications

SUPO Additional Information: NONE

Use a previously conducted onsite? YES

Previous Onsite information: APR 24 2015 Met with Paul Murphy (BLM) & RRC Surveying & staked location @ 2500' FSL

Operator Name: MEWBOURNE OIL COMPANY

Well Name: FULLER 13/12 B2ED FED COM

Well Number: 1H

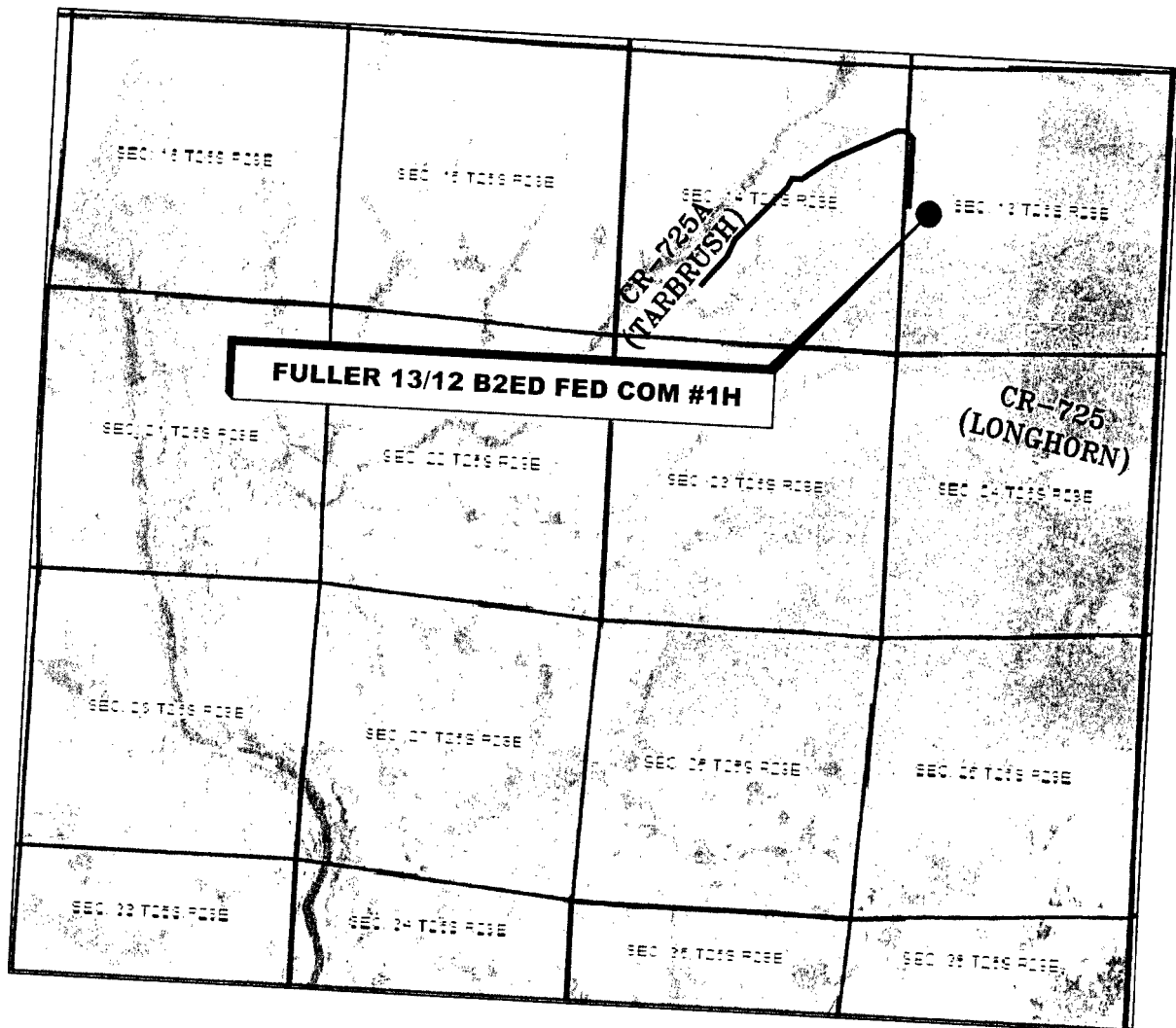
& 660' FWL, Sec 13, T26S, R29E, Eddy Co., NM. Moved location to share pad with Fuller 13/24 B2LM Fed #1H. Moved location to 2620' FSL & 500' FWL, Sec 13, T26S, R29E, Eddy Co. NM. (Elevation @ 2959'). This appears to be a drillable location with pit area to the N. Topsoil will be stockpiled 30' wide on E side.

Other SUPO Attachment

Fuller 13 12 B2ED Fed Com 1H_operatorletteragreement_02-06-2017.pdf

VICINITY MAP

NOT TO SCALE



SECTION 13, TWP. 26 SOUTH, RGE. 29 EAST,
N. M. P. M., EDDY COUNTY, NEW MEXICO

OPERATOR: Mewbourne Oil Company
LEASE: Fuller 13/12 B2ED Fed Com
WELL NO.: 1H

LOCATION: 2620' FSL & 500' FWL
ELEVATION: 2959'

Firm No.: TX 10193838 NM 4655451

Copyright 2014 - All Rights Reserved

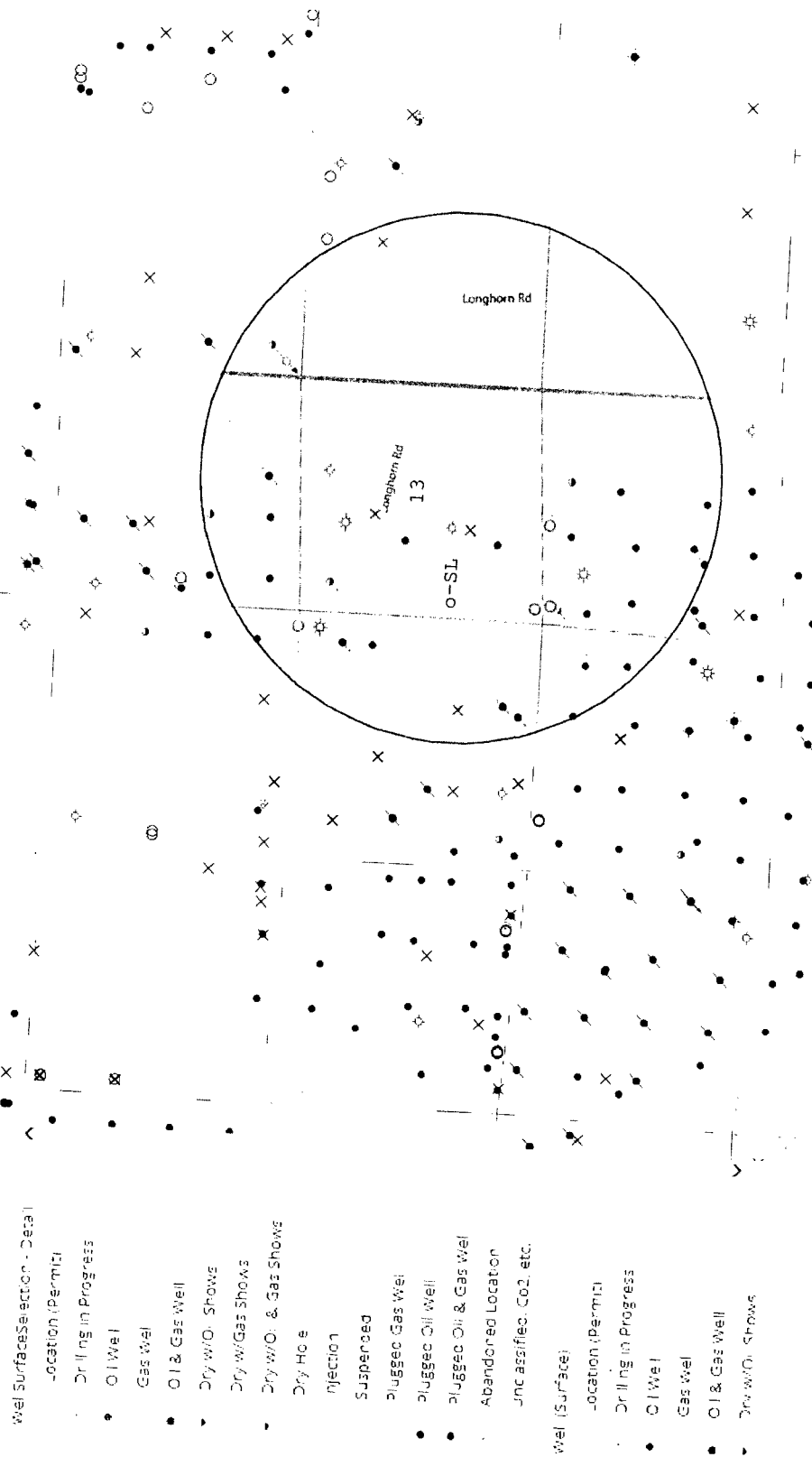
RRC

NO.	REVISION	DATE
JOB NO.:	LS1504119	
DWG. NO.:	1504119VM	

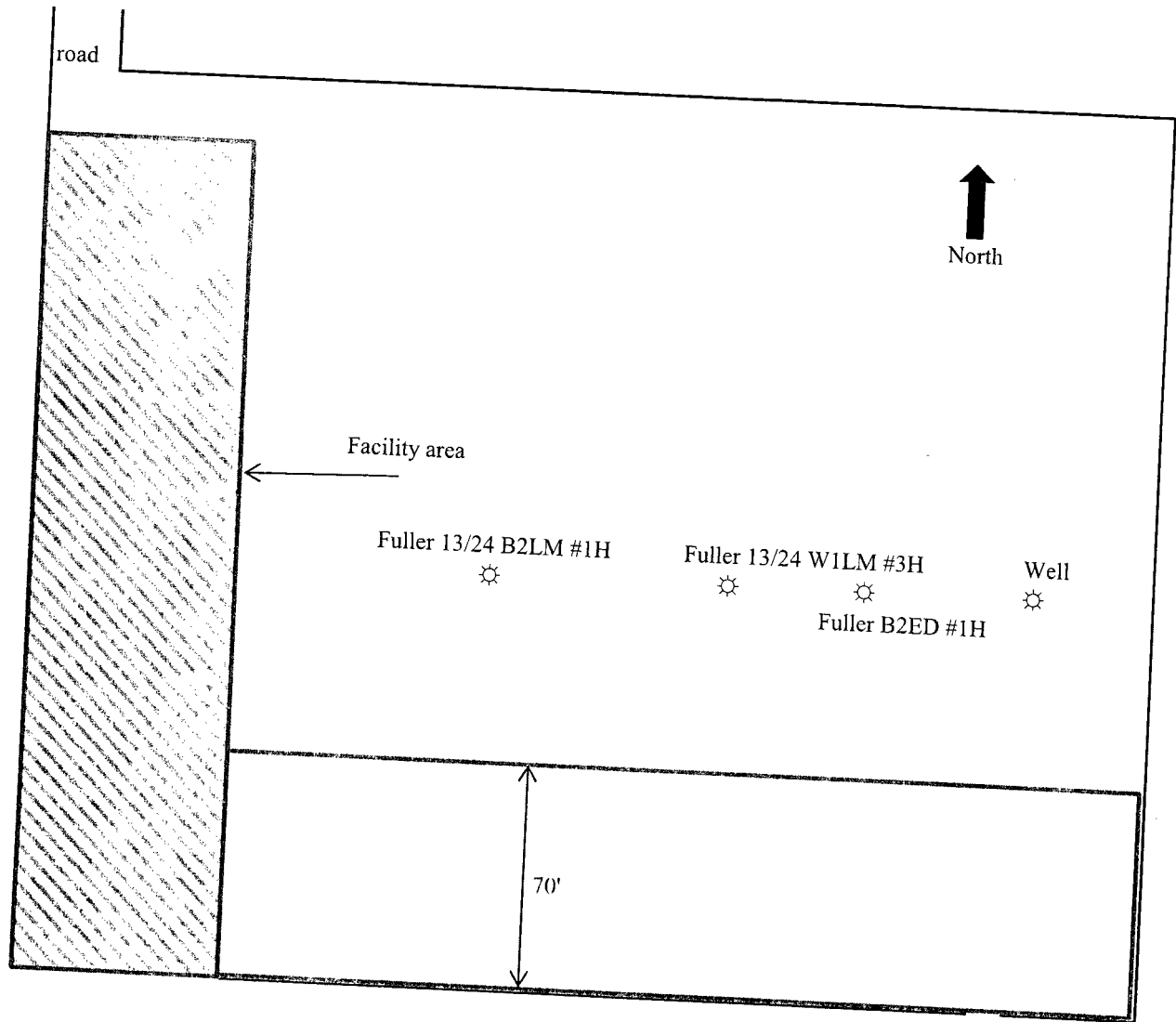
308 W. BROADWAY ST., HOBBS, NM 88240 (575) 964-8200

SCALE: N.T.S.
DATE: 4-29-15
SURVEYED BY: BK/FW
DRAWN BY: JC
APPROVED BY: RMH
SHEET : 1 OF 1

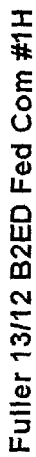
Existing well map

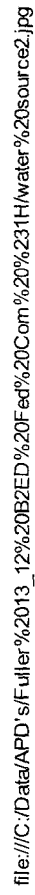


Interim Reclamation Area

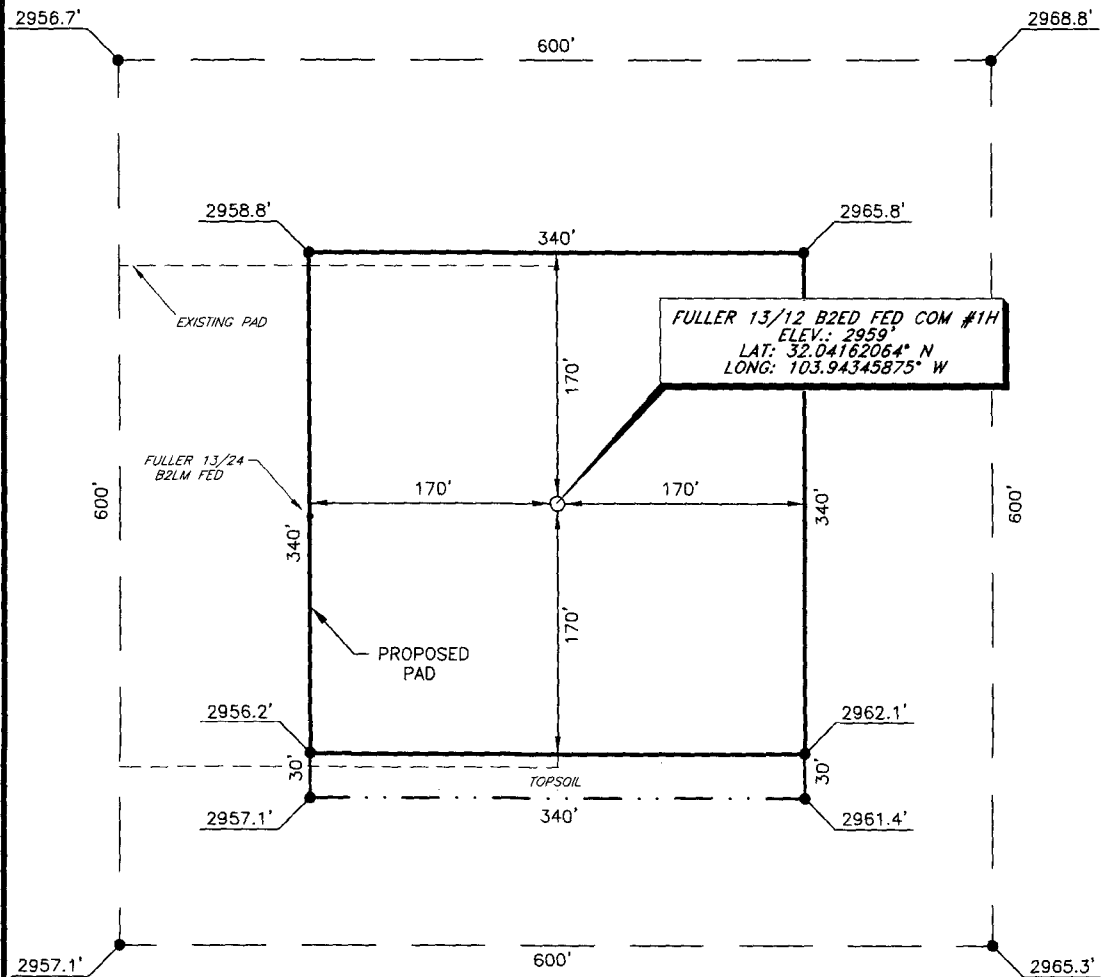


Mewbourne Oil Company
Fuller 13/12 B2ED Fed Com #1H
2620' FSL & 600' FWL
Sec. 13 T26S R29E
Eddy County, NM





MEWBOURNE OIL COMPANY
 FULLER 13/12 B2ED FED COM #1H
 (2620' FSL & 500 FWL)
 SECTION 13, T26S, R29E
 N. M. P. M., EDDY CO., NEW MEXICO



DIRECTIONS TO LOCATION

From the intersection of CR-725 (Longhorn) and CR-725A (Tarbrush);
 Go Northeast on CR-725A approx. 0.5 miles to a "Y";
 Turn right and go Northeast approx. 0.5 miles to lease road on right;
 Turn right and go South approx. 0.3 miles to Fuller 13/24 B2LM FED #1H;
 Location is approx. 170 feet East of existing well.

SCALE: 1" = 100'
 0 50 100
 BEARINGS ARE
 NAD 27 GRID - NM EAST
 DISTANCES ARE
 GROUND.

Firm No.: TX 10193838 NM 4655451

Copyright 2015 - All Rights Reserved

NO.	REVISION	DATE
JOB NO.:	LS1504119	
DWG. NO.:	1504119PAD	

RRC

308 W. BROADWAY ST., HOBBS, NM 88240 (575) 964-8200

SCALE: 1" = 100'
DATE: 4-29-15
SURVEYED BY: BK/FW
DRAWN BY: JC
APPROVED BY: RMH
SHEET : 1 OF 1

APD Attachment: Fuller 13/12 B2ED Fed Com #1H

BLM Serial No.: NMLC 061497 – T26S, R29E, Section 13: W/2NW/4, Eddy County, NM

Current Record Title owner: Chevron U.S.A. Inc.

Current Operating Rights Owner: Mewbourne Oil Company, et al

In addition to Operating Rights, Mewbourne Oil Company currently has a contractual interest in these tracts via Joint Operating Agreement dated September 1, 2015

Mewbourne Oil Company is currently working with Chevron U.S.A. Inc, et al to form a working interest unit including this lease that will allow for the development of all lands covering the W/2NW/4 of Section 13 and the W/2W/2 of Section 12, both in T26S, R29E, Eddy County, New Mexico.

Chevron U.S.A. Inc., et al, 6301 Deauville Blvd, Midland, Texas 79706, Attn: Brandon South 432-687-7267

BLM Serial No.: NMNM 071066 – T26S, R29E, Section 12: W/2SW/4, Eddy County, NM

Current Record Title owner: Mewbourne Oil Company (35%), Rapada Resources Corporation (35%), Chevron U.S.A. Inc. (23.9375%), Carbon Techs energy (2.5%) and Nu-energy Oil and Gas, Inc. (2.5%), Vivian M. Kral, whose husband is Richard F. Kral, Sr. (1.0625%)

Current Operating Rights Owner: Chevron U.S.A. Inc, et al

Mewbourne Oil Company currently has a contractual interest in these tracts via Joint Operating Agreement dated September 1, 2015

Mewbourne Oil Company is currently working with Chevron U.S.A. Inc, et al to form a working interest unit including this lease that will allow for the development of all lands covering the W/2NW/4 of Section 13 and the W/2W/2 of Section 12, both in T26S, R29E, Eddy County, New Mexico.

Chevron U.S.A. Inc., et al, 6301 Deauville Blvd, Midland, Texas 79706, Attn: Brandon South 432-687-7267

BLM Serial No.: NMNM 11039 – T26S, R29E, Section 12: W/2NW/4, Eddy County, NM

Current Record Title owner: Chevron U.S.A. Inc. (83%), RKC, Inc. (10.2%), Carbon Techs energy (2.5%) and Nu-energy Oil and Gas, Inc. (2.5%), William J. Graham and Rosalynn Graham (1.8%)

Current Operating Rights Owner: Chevron U.S.A. Inc, et al

Mewbourne Oil Company currently has a contractual interest in these tracts via Joint Operating Agreement dated September 1, 2015

Mewbourne Oil Company is currently working with Chevron U.S.A. Inc, et al to form a working interest unit including this lease that will allow for the development of all lands covering the W/2NW/4 of Section 13 and the W/2W/2 of Section 12, both in T26S, R29E, Eddy County, New Mexico.

Chevron U.S.A. Inc., et al, 6301 Deauville Blvd, Midland, Texas 79706, Attn: Brandon South 432-687-7267

Section 1 - General

Would you like to address long-term produced water disposal? NO

Section 2 - Lined Pits

Would you like to utilize Lined Pit PWD options? NO

Produced Water Disposal (PWD) Location:

PWD surface owner:

PWD disturbance (acres):

Lined pit PWD on or off channel:

Lined pit PWD discharge volume (bbl/day):

Lined pit specifications:

Pit liner description:

Pit liner manufacturers information:

Precipitated solids disposal:

Describe precipitated solids disposal:

Precipitated solids disposal permit:

Lined pit precipitated solids disposal schedule:

Lined pit precipitated solids disposal schedule attachment:

Lined pit reclamation description:

Lined pit reclamation attachment:

Leak detection system description:

Leak detection system attachment:

Lined pit Monitor description:

Lined pit Monitor attachment:

Lined pit: do you have a reclamation bond for the pit?

Is the reclamation bond a rider under the BLM bond?

Lined pit bond number:

Lined pit bond amount:

Additional bond information attachment:

Section 3 - Unlined Pits

Would you like to utilize Unlined Pit PWD options? NO

Produced Water Disposal (PWD) Location:

PWD surface owner:

PWD disturbance (acres):

Unlined pit PWD on or off channel:

Unlined pit PWD discharge volume (bbl/day):

Unlined pit specifications:

Precipitated solids disposal:

Describe precipitated solids disposal:

Precipitated solids disposal permit:

Unlined pit precipitated solids disposal schedule:

Unlined pit precipitated solids disposal schedule attachment:

Unlined pit reclamation description:

Unlined pit reclamation attachment:

Unlined pit Monitor description:

Unlined pit Monitor attachment:

Do you propose to put the produced water to beneficial use?

Beneficial use user confirmation:

Estimated depth of the shallowest aquifer (feet):

Does the produced water have an annual average Total Dissolved Solids (TDS) concentration equal to or less than that of the existing water to be protected?

TDS lab results:

Geologic and hydrologic evidence:

State authorization:

Unlined Produced Water Pit Estimated percolation:

Unlined pit: do you have a reclamation bond for the pit?

Is the reclamation bond a rider under the BLM bond?

Unlined pit bond number:

Unlined pit bond amount:

Additional bond information attachment:

Section 4 - Injection

Would you like to utilize Injection PWD options? NO

Produced Water Disposal (PWD) Location:

PWD surface owner:

PWD disturbance (acres):

Injection PWD discharge volume (bbl/day):

Injection well mineral owner:

Injection well type:

Injection well number:

Injection well name:

Assigned injection well API number?

Injection well API number:

Injection well new surface disturbance (acres):

Minerals protection information:

Mineral protection attachment:

Underground Injection Control (UIC) Permit?

UIC Permit attachment:

Section 5 - Surface Discharge

Would you like to utilize Surface Discharge PWD options? NO

Produced Water Disposal (PWD) Location:

PWD surface owner:

PWD disturbance (acres):

Surface discharge PWD discharge volume (bbl/day):

Surface Discharge NPDES Permit?

Surface Discharge NPDES Permit attachment:

Surface Discharge site facilities information:

Surface discharge site facilities map:

Section 6 - Other

Would you like to utilize Other PWD options? NO

Produced Water Disposal (PWD) Location:

PWD surface owner:

PWD disturbance (acres):

Other PWD discharge volume (bbl/day):

Other PWD type description:

Other PWD type attachment:

Have other regulatory requirements been met?

Other regulatory requirements attachment:



U.S. Department of the Interior
BUREAU OF LAND MANAGEMENT

Bond Info Data Report

09/18/2017

Bond Information

Federal/Indian APD: FED

BLM Bond number: NM1693

BIA Bond number:

Do you have a reclamation bond? NO

Is the reclamation bond a rider under the BLM bond?

Is the reclamation bond BLM or Forest Service?

BLM reclamation bond number:

Forest Service reclamation bond number:

Forest Service reclamation bond attachment:

Reclamation bond number:

Reclamation bond amount:

Reclamation bond rider amount:

Additional reclamation bond information attachment: