

District I  
1625 N. French Dr., Hobbs, NM 88240  
Phone: (575) 393-6161 Fax: (575) 393-0720  
District II  
811 S. First St., Artesia, NM 88210  
Phone: (575) 748-1283 Fax: (575) 748-9720  
District III  
1000 Rio Brazos Road, Aztec, NM 87410  
Phone: (505) 334-6178 Fax: (505) 334-6170  
District IV  
1220 S. St. Francis Dr., Santa Fe, NM 87505  
Phone: (505) 476-3460 Fax: (505) 476-3462

State of New Mexico  
Energy, Minerals & Natural Resources Department  
**OIL CONSERVATION**  
1220 South St. Francis  
Santa Fe, NM 87505

Form C-102  
Revised August 1, 2011  
Submit one copy to appropriate  
District Office

SEP 26 2017

☐ AMENDED REPORT

WELL LOCATION AND ACREAGE DEDICATION PLAT

<sup>1</sup> API Number <b>30-015-44450</b>		<sup>2</sup> Pool Code 98220	<sup>3</sup> Pool Name PURPLE SAGE WOLFCAMP GAS
<sup>4</sup> Property Code <b>319624</b>	<sup>5</sup> Property Name <b>FULLER 14/11 WIHA FEDERAL</b>		<sup>6</sup> Well Number <b>2H</b>
<sup>7</sup> OGRID NO. 14744	<sup>8</sup> Operator Name <b>MEWBOURNE OIL COMPANY</b>		<sup>9</sup> Elevation <b>2949'</b>

<sup>10</sup> Surface Location

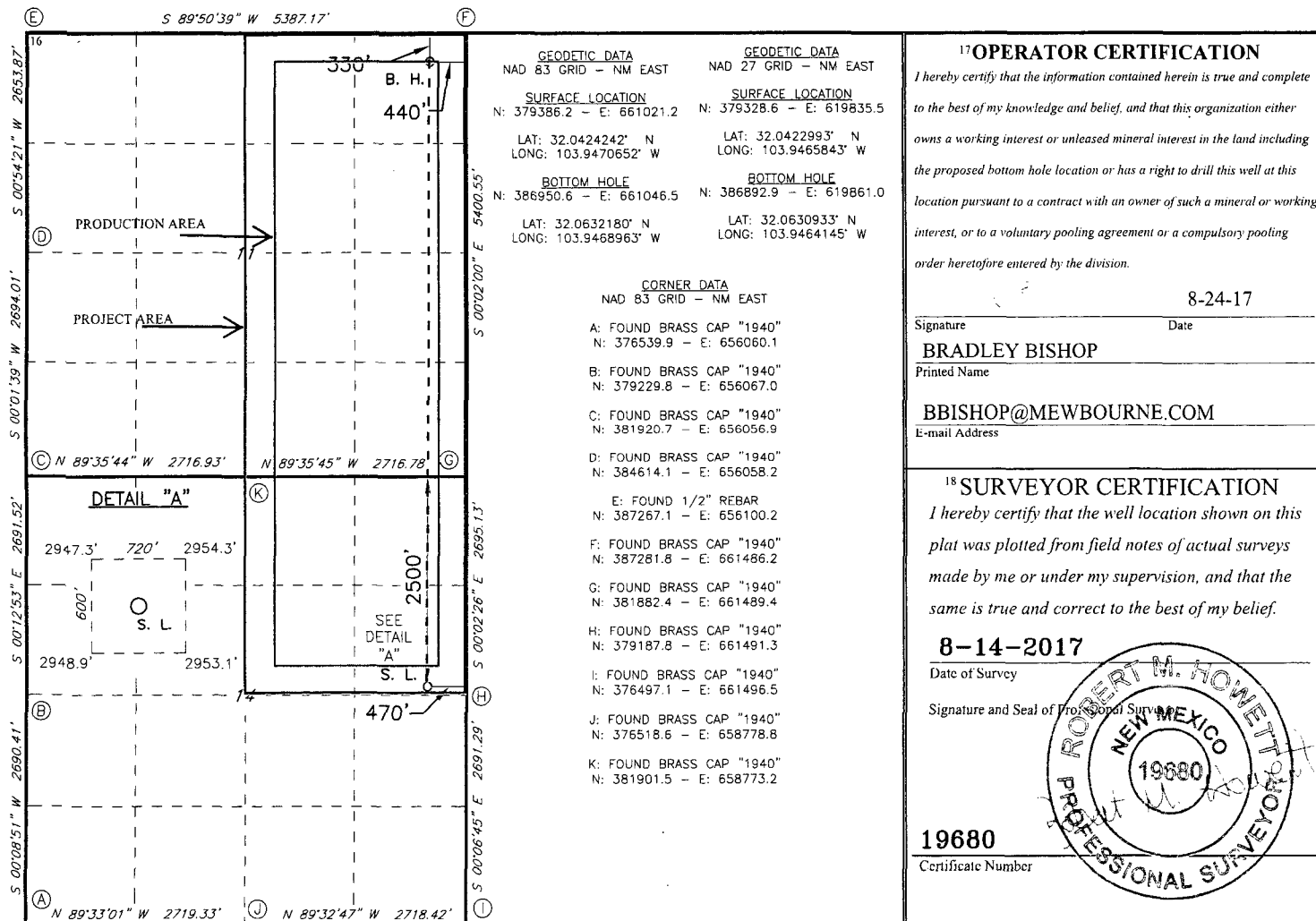
UL or lot no.	Section	Township	Range	Lot Idn	Feet from the	North/South line	Feet From the	East/West line	County
<b>H</b>	<b>14</b>	<b>26S</b>	<b>29E</b>		<b>2500</b>	<b>NORTH</b>	<b>470</b>	<b>EAST</b>	<b>EDDY</b>

<sup>11</sup> Bottom Hole Location If Different From Surface

UL or lot no.	Section	Township	Range	Lot Idn	Feet from the	North/South line	Feet from the	East/West line	County
<b>A</b>	<b>11</b>	<b>26S</b>	<b>29E</b>		<b>330</b>	<b>NORTH</b>	<b>440</b>	<b>EAST</b>	<b>EDDY</b>

<sup>12</sup> Dedicated Acres 480	<sup>13</sup> Joint or Infill	<sup>14</sup> Consolidation Code	<sup>15</sup> Order No.
--------------------------------------	-------------------------------	----------------------------------	-------------------------

No allowable will be assigned to this completion until all interest have been consolidated or a non-standard unit has been approved by the division.



RRC - Job No.:

LS1708499

NSP Required  
640/2500  
RIP 9-20-17