

**District I**  
1625 N. French Dr., Hobbs, NM 88240  
Phone: (575) 393-6161 Fax: (575) 393-0720

**District II**  
811 S. First St., Artesia, NM 88210  
Phone: (575) 748-1283 Fax: (575) 748-9720

**District III**  
1000 Rio Brazos Road, Aztec, NM 87410  
Phone: (505) 334-6178 Fax: (505) 334-6170

**District IV**  
1220 S. St. Francis Dr., Santa Fe, NM 87505  
Phone: (505) 476-3460 Fax: (505) 476-3462

State of New Mexico **OIL CONSERVATION**  
ARTESIA DISTRICT  
Energy Minerals and Natural Resources  
Oil Conservation Division  
1220 South St. Francis  
Santa Fe, NM 87505

SEP 28 2017  
RECEIVED

Form C-101  
Revised July 18, 2013

AMENDED REPORT

**APPLICATION FOR PERMIT TO DRILL, RE-ENTER, DEEPEN, PLUGBACK, OR ADD A ZONE**

<sup>1</sup> Operator Name and Address EOG Y Resources, Inc. 104 South Fourth Street Artesia, NM 88210		<sup>2</sup> OGRID Number 025575
<sup>4</sup> Property Code 12895		<sup>3</sup> API Number 30-015-26498
<sup>5</sup> Property Name Winston All		<sup>6</sup> Well No.

**7. Surface Location**

UL - Lot	Section	Township	Range	Lot Idn	Feet from	N/S Line	Feet From	E/W Line	County
E	14	19S	24E		1980	North	660	West	Eddy

**8. Proposed Bottom Hole Location**

UL - Lot	Section	Township	Range	Lot Idn	Feet from	N/S Line	Feet From	E/W Line	County

**Pool Information**

Pool Name Wildcat; Abo	<i>WC-015-5192414E</i>	Pool Code <i>98245</i>
---------------------------	------------------------	---------------------------

**Additional Well Information**

<sup>11</sup> Work Type P	<sup>12</sup> Well Type O	<sup>13</sup> Cable/Rotary N/A	<sup>14</sup> Lease Type P	<sup>15</sup> Ground Level Elevation 3657'
<sup>16</sup> Multiple N	<sup>17</sup> Proposed Depth N/A	<sup>18</sup> Formation Devonian	<sup>19</sup> Contractor N/A	<sup>20</sup> Spud Date N/A
Depth to Ground water N/A		Distance from nearest fresh water well N/A		Distance to nearest surface water N/A

We will be using a closed-loop system in lieu of lined pits

**21. Proposed Casing and Cement Program**

Type	Hole Size	Casing Size	Casing Weight/ft	Setting Depth	Sacks of Cement	Estimated TOC
Conductor	26"	20"	Conductor	40'	Redi-mix (In Place)	0
Surface	14-3/4"	9-5/8"	36#	1215'	1100 sx (In Place)	0
Production	8-3/4"	7"	26# & 29#	10,850'	2750 sx (In Place)	0

**Casing/Cement Program: Additional Comments**

Refer to page 2 for details

**22. Proposed Blowout Prevention Program**

Type	Working Pressure	Test Pressure	Manufacturer
Manual BOP	3000 psi	3000 psi	Whichever company is available

<sup>23</sup> I hereby certify that the information given above is true and complete to the best of my knowledge and belief.  
I further certify that I have complied with 19.15.14.9 (A) NMAC  and/or 19.15.14.9 (B) NMAC , if applicable.

Signature: *Tina Huerta*

Printed name: Tina Huerta

Title: Regulatory Specialist

E-mail Address: tina\_huerta@eogresources.com

Date: September 25, 2017

Phone: (575) 748-4168

**OIL CONSERVATION DIVISION**

Approved By:

*Raymond M. Padany*

Title:

*Geologist*

Approved Date: *9-27-17*

Expiration Date: *9-27-19*

Conditions of Approval Attached

**Form C-101 continued:**

EOG Y Resources, Inc. plans to plugback and recomplete this well as follows:

1. MIRU all safety equipment as needed. NU BOP. POOH with the packer and tubing. Load hole as necessary with fresh water.
2. Set a CIBP at 8608' with 25 sx Class "H" cement on top. This will place a plug over open Morrow perforations. Load hole with plugging mud and spot a 240' cement plug from 7188'-7428' across Canyon top.
3. Set a CIBP at 6384' with 25 sx Class "H" cement on top. This will place a plug over open Cisco perforations.
4. Spot a 310' Class "C" cement plug from 5040'-5350'. This will leave a plug across Wolfcamp top and stage tool. WOC 8 hours. Load hole with treated water and pressure test the casing to 3000 psi.
5. Perforate Abo 4056'-4082' (27).
6. TIH with packer and tubing. Set packer at 120' above the top perf.
7. Acidize with 2000g of 20% NEFE acid. Drop 90 1.3 SG RCN ball sealers spaced out evenly throughout the acid flush to the bottom perf with treated water. Limit STP to 5000 psi. Swab, flow test and evaluate. Consider turning the well over to production. If the decision to frac POOH with packer and tubing. Load hole as necessary with treated water.
8. TIH with packer and tubing. MIRU frac valve and WSC to pump a fracturing treatment down the 3.5" tubing at 38-40 BPM while limiting the surface treating pressure to less than 8,600 psi.

Treating Schedule  
 -----

Stage Number	Stage	gal Fluid	Fluid	lb/gal Prop Conc	lb Proppant Stage	Cumulative Proppant	-----
1	Injection	1500.	Slickwater	0.00	0.	0.	----
2	Acid	2000.	20% HCL	0.00	0.	0.	----
3	Pad	2000.	Slickwater	0.00	0.	0.	----
4	ISIP	0.	Slickwater	0.00	0.	0.	----
5	Pad	14000.	Slickwater	0.00	0.	0.	----
6	SLF	33000.	Slickwater	0.50	16500.	16500.	100 Mesh
7	SLF	25000.	Slickwater	1.00	25000.	41500.	100 Mesh
8	SLF	22000.	Slickwater	1.50	33000.	74500.	100 Mesh
9	SLF	17000.	Slickwater	2.00	34000.	108500.	100 Mesh
10	SLF	6600.	Slickwater	2.50	16500.	125000.	100 Mesh
11	Flush	1500.	Slickwater	0.00	0.	0.	----

**Estimated Surface Treating Pressure = 4,564 psig.**  
**Maximum Surface Treating Pressure = 8,600 psig.**


**Fluid Specifications:** Fresh water with 0.8 Gal/M FR, biocide and scale inhibitor.

**EOG will provide:**

6 clean frac tanks with 480 bbls of fresh water for the treatment and flush.

9. Flow test and evaluate and let the well clean up, if the well is dead or the pressure is low bullhead 10# brine with biocide and POOH with tubing and packer. If the well head pressure is staying above 200 psi set a blanking plug in the O/O tool jay off the packer and POOH laying down the 3.5" frac string. TIH with tubing and jay back onto the packer and pull the blanking plug.
10. Swab the well and turn over to production

Wellbore schematics attached

  
 \_\_\_\_\_  
 Regulatory Specialist  
 September 25, 2017

**WELL NAME:** WINSTON All No. 1      **FIELD:** Little Box Canyon Morrow  
**LOCATION:** 1980 FNL & 660 FWL Sec 14-19S-24E      Eddy County      NM  
**GL:** 3657'      **ZERO:** 14'      **KB:** 3671'  
**SPUD DATE:** 10/24/90      **COMPLETION DATE:** 1/10/91  
**COMMENTS:** API #: 30-015-26498

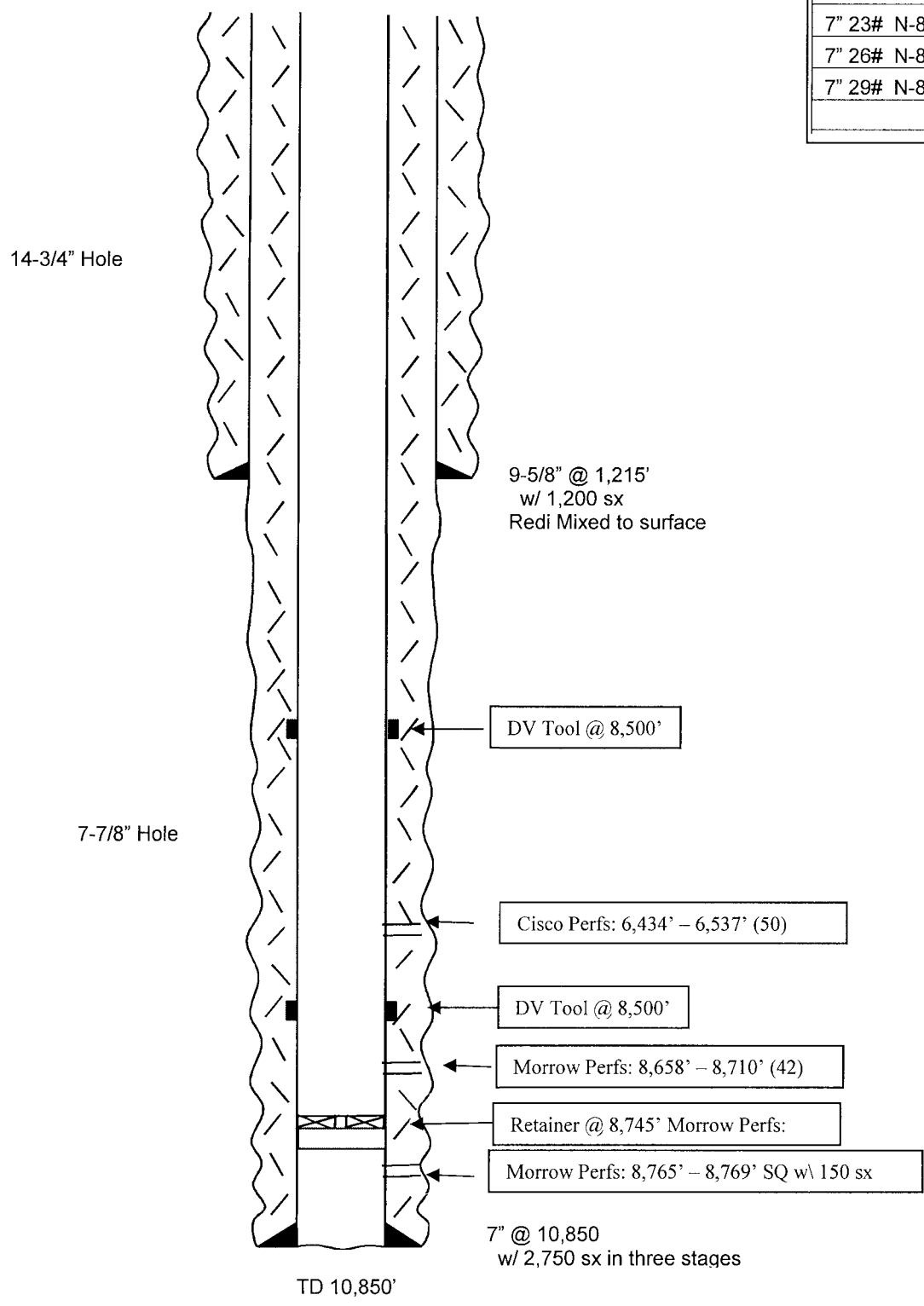
**CASING PROGRAM**

9-5/8" 36# J55 ST&C	1,215'
Top	
7" 29# N-80	131'
7" 26# N-80	1,245'
7" 23# N-80	4,441'
7" 26# N-80	3,138'
7" 29# N-80	1,918'
Bottom	10,850'

**Before**

**TOPS**

San Andres	430'
Glorieta	1,784'
Yeso	1,850'
Abo	3,834'
Wolfcamp	5,092'
Cisco	6,294'
Canyon	7,378'
Strawn	8,036'
Atoka	8,385'
Morrow	8,650'
Devonian	9,489'



**Not to Scale**  
 09/25/17  
 JMH

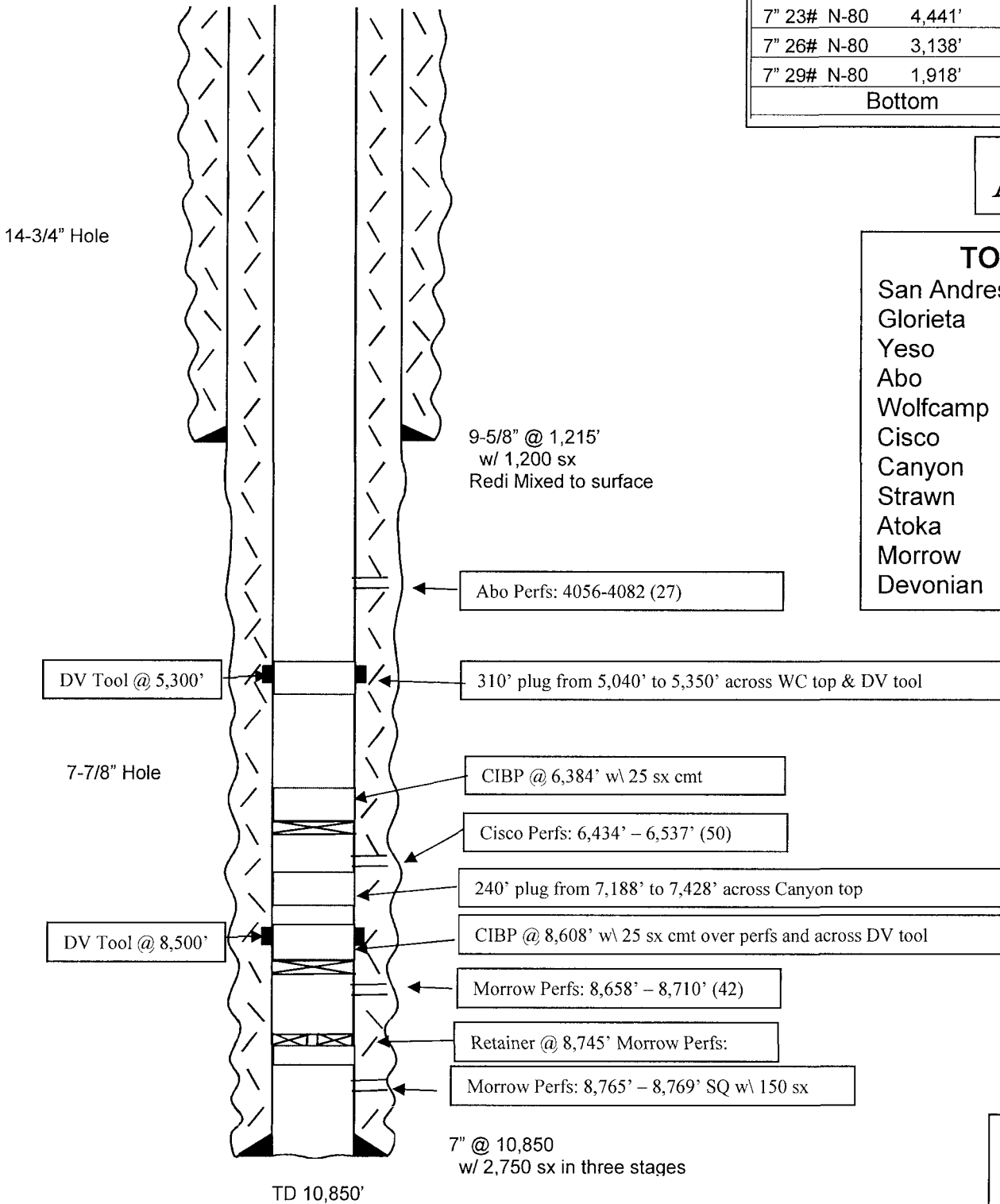
**WELL NAME:** WINSTON All No. 1      **FIELD:** Little Box Canyon Morrow  
**LOCATION:** 1980 FNL & 660 FWL Sec 14-19S-24E      Eddy County      NM  
**GL:** 3657'      **ZERO:** 14'      **KB:** 3671'  
**SPUD DATE:** 10/24/90      **COMPLETION DATE:** 1/10/91  
**COMMENTS:** API #: 30-015-26498

**CASING PROGRAM**

9-5/8" 36# J55 ST&C	1,215'
Top	
7" 29# N-80	131'
7" 26# N-80	1,245'
7" 23# N-80	4,441'
7" 26# N-80	3,138'
7" 29# N-80	1,918'
Bottom	
	10,850'

**After**

<b>TOPS</b>	
San Andres	430'
Glorieta	1,784'
Yeso	1,850'
Abo	3,834'
Wolfcamp	5,092'
Cisco	6,294'
Canyon	7,378'
Strawn	8,036'
Atoka	8,385'
Morrow	8,650'
Devonian	9,489'



**Not to Scale**  
 09/25/17  
 JMH