

Submit 1 Copy To Appropriate District Office

District I – (575) 393-6161
1625 N. French Dr., Hobbs, NM 88240
District II – (575) 748-1283
811 S. First St., Artesia, NM 88210
District III – (505) 334-6178
1000 Rio Brazos Rd., Aztec, NM 87410
District IV – (505) 476-3460
1220 S. St. Francis Dr., Santa Fe, NM 87505

State of New Mexico
Energy, Minerals and Natural Resources

OIL CONSERVATION DIVISION
1220 South St. Francis Dr.
Santa Fe, NM 87505

Form C-103
Revised July 18, 2013

WELL API NO. 30-015-44314
5. Indicate Type of Lease STATE <input checked="" type="checkbox"/> FEE <input type="checkbox"/>
6. State Oil & Gas Lease No.
7. Lease Name or Unit Agreement Name REMUDA NORTH 25 STATE
8. Well Number 103H
9. OGRID Number 005380
10. Pool name or Wildcat PUPRLE SAGE; WOLFCAMP

SUNDRY NOTICES AND REPORTS ON WELLS (DO NOT USE THIS FORM FOR PROPOSALS TO DRILL OR TO DEEPEN OR PLUG BACK TO A DIFFERENT RESERVOIR. USE "APPLICATION FOR PERMIT" (FORM C-101) FOR SUCH PROPOSALS.)	
1. Type of Well: Oil Well <input type="checkbox"/> Gas Well <input checked="" type="checkbox"/> Other	
2. Name of Operator XTO ENERGY INC	
3. Address of Operator 500 W. ILLINOIS, STE. 100, MIDLAND, TX 79701	
4. Well Location Unit Letter K : 2280 feet from the SOUTH line and 1935 feet from the WEST line Section 25 Township 23S Range 29E NMPM County EDDY	
11. Elevation (Show whether DR, RKB, RT, GR, etc.) 3069' GR	

12. Check Appropriate Box to Indicate Nature of Notice, Report or Other Data

NOTICE OF INTENTION TO:		SUBSEQUENT REPORT OF:	
PERFORM REMEDIAL WORK <input type="checkbox"/>	PLUG AND ABANDON <input type="checkbox"/>	REMEDIAL WORK <input type="checkbox"/>	ALTERING CASING <input type="checkbox"/>
TEMPORARILY ABANDON <input type="checkbox"/>	CHANGE PLANS <input checked="" type="checkbox"/>	COMMENCE DRILLING OPNS. <input type="checkbox"/>	P AND A <input type="checkbox"/>
PULL OR ALTER CASING <input type="checkbox"/>	MULTIPLE COMPL <input type="checkbox"/>	CASING/CEMENT JOB <input type="checkbox"/>	
DOWNHOLE COMMINGLE <input type="checkbox"/>			
CLOSED-LOOP SYSTEM <input type="checkbox"/>			
OTHER: <input type="checkbox"/>		OTHER: <input type="checkbox"/>	

13. Describe proposed or completed operations. (Clearly state all pertinent details, and give pertinent dates, including estimated date of starting any proposed work). SEE RULE 19.15.7.14 NMAC. For Multiple Completions: Attach wellbore diagram of proposed completion or recompletion.

XTO Energy Inc respectfully requests to change the well number from 1003 to 103H.

NM OIL CONSERVATION
ARTESIA DISTRICT

SEP 11 2017

RECEIVED

Spud Date:

Rig Release Date:

I hereby certify that the information above is true and complete to the best of my knowledge and belief.

SIGNATURE Jessica Bonilla TITLE Regulatory Analyst DATE 9/6/17

Type or print name Jessica Bonilla E-mail address: jessica_bonilla@xtoenergy.com PHONE: 432-620-6704

For State Use Only

APPROVED BY: [Signature] TITLE Staff Mgr DATE 9-12-17
Conditions of Approval (if any):

District I
1625 N. French Dr., Hobbs, NM 88240
Phone: (575) 393-6161 Fax: (575) 393-0720
District II
811 S. First St., Artesia, NM 88210
Phone: (575) 748-1283 Fax: (575) 748-9720
District III
1000 Rio Brazos Road, Aztec, NM 87410
Phone: (505) 334-6178 Fax: (505) 334-6170
District IV
1220 S. St. Francis Dr., Santa Fe, NM 87505
Phone: (505) 476-3460 Fax: (505) 476-3462

State of New Mexico
Energy, Minerals & Natural Resources Department
OIL CONSERVATION DIVISION
1220 South St. Francis Dr.
Santa Fe, NM 87505

NM OIL CONSERVATION

ARTESIA DISTRICT

Form C-102

SEP 11 2017

Revised August 1, 2011

Submit one copy to appropriate

District Office

RECEIVED

☐ AMENDED REPORT

WELL LOCATION AND ACREAGE DEDICATION PLAT

¹ API Number 30-015-44314	² Pool Code 98000	³ Pool Name Purple Sage, wellhead
⁴ Property Code 317790	⁵ Property Name REMUDA NORTH 25 STATE	⁶ Well Number 103H
⁷ GRID NO. 606380	⁸ Operator Name XTO ENERGY, INC.	⁹ Elevation 3069'

¹⁰ Surface Location

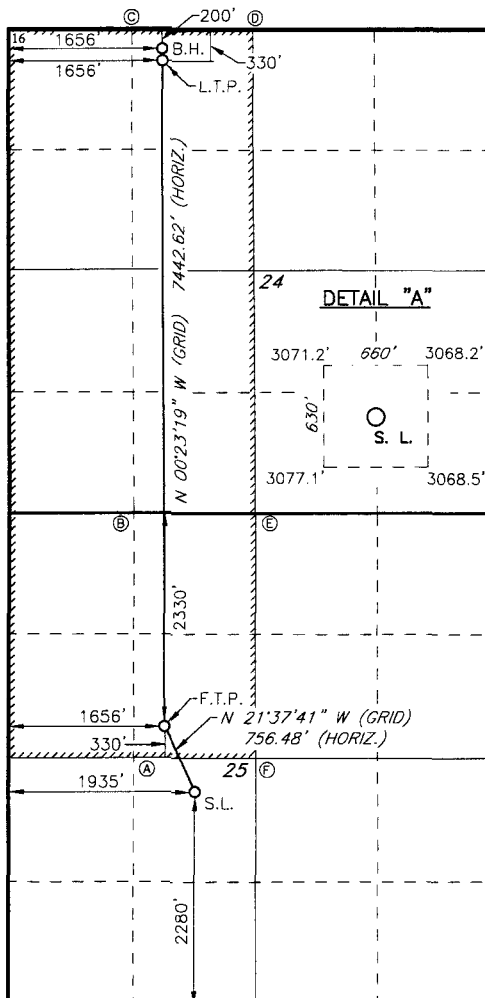
UL or lot no.	Section	Township	Range	Lot Idn	Feet from the	North/South line	Feet From the	East/West line	County
K	25	23S	29E		2280	SOUTH	1935	WEST	EDDY

¹¹ Bottom Hole Location If Different From Surface

UL or lot no.	Section	Township	Range	Lot Idn	Feet from the	North/South line	Feet from the	East/West line	County
C	24	23S	29E		200	NORTH	1656	WEST	EDDY

¹² Dedicated Acres 4.80	¹³ Joint or Infill	¹⁴ Consolidation Code	¹⁵ Order No. NSE Pending
--	-------------------------------	----------------------------------	---

No allowable will be assigned to this completion until all interest have been consolidated or a non-standard unit has been approved by the division.



GEODETIC DATA NAD 27 GRID - NM EAST	GEODETIC DATA NAD 83 GRID - NM EAST
BOTTOM HOLE N: 472030.2 - E: 621892.8 LAT: 32.29711110° N LONG: 103.93884788° W LAST TAKE POINT N: 471900.2 - E: 621894.1 LAT: 32.29675383° N LONG: 103.93884535° W	BOTTOM HOLE N: 472090.6 - E: 662422.1 LAT: 32.29724238° N LONG: 103.94145472° W LAST TAKE POINT N: 471960.6 - E: 662423.3 LAT: 32.29688506° N LONG: 103.94145227° W
CORNER DATA NAD 27 GRID - NM EAST A: CALCULATED CORNER N: 464260.4 - E: 620959.8 B: CALCULATED CORNER N: 466919.5 - E: 620957.3 C: CALCULATED CORNER N: 472231.5 - E: 620907.1 D: FOUND BRASS CAP "1942" N: 472229.6 - E: 622232.7 E: FOUND BRASS CAP "1942" N: 466920.1 - E: 622280.9 F: CALCULATED CORNER N: 464259.7 - E: 622285.8	CORNER DATA NAD 83 GRID - NM EAST A: CALCULATED CORNER N: 464319.8 - E: 662143.1 B: CALCULATED CORNER N: 466978.9 - E: 662140.6 C: CALCULATED CORNER N: 472291.0 - E: 662090.0 D: FOUND BRASS CAP "1942" N: 472289.2 - E: 663415.9 E: FOUND BRASS CAP "1942" N: 466979.5 - E: 663464.2 F: CALCULATED CORNER N: 464319.1 - E: 663469.2
GEODETIC DATA NAD 27 GRID - NM EAST FIRST TAKE POINT N: 464589.9 - E: 621942.9 LAT: 32.27665801° N LONG: 103.93877434° W SURFACE LOCATION N: 463887.2 - E: 621568.1 LAT: 32.27473004° N LONG: 103.9399533° W	GEODETIC DATA NAD 83 GRID - NM EAST FIRST TAKE POINT N: 464649.6 - E: 662472.8 LAT: 32.27678790° N LONG: 103.94137866° W SURFACE LOCATION N: 463946.5 - E: 662751.5 LAT: 32.27485244° N LONG: 103.94048496° W

¹⁷ OPERATOR CERTIFICATION

I hereby certify that the information contained herein is true and complete to the best of my knowledge and belief, and that this organization either owns a working interest or unleased mineral interest in the land including the proposed bottom hole location or has a right to drill this well at this location pursuant to a contract with an owner of such a mineral or working interest, or to a voluntary pooling agreement or a compulsory pooling order heretofore entered by the division.

Stephanie Rabreau 5-23-17
Signature Date
Stephanie Rabreau
Printed Name
Stephanie - Rabreau @ xtoenergy.com
E-mail Address

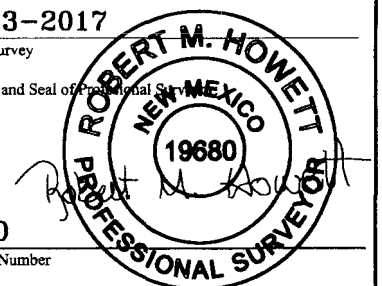
¹⁸ SURVEYOR CERTIFICATION

I hereby certify that the well location shown on this plat was plotted from field notes of actual surveys made by me or under my supervision, and that the same is true and correct to the best of my belief.

2-23-2017

Date of Survey

Signature and Seal of Professional Surveyor



19680

Certificate Number