

## WELL LOCATION AND ACREAGE DEDICATION PLAT

<sup>1</sup> API Number 30-015- 44485	<sup>2</sup> Pool Code 98220	<sup>3</sup> Pool Name PURPLE SAGE; WOLF CAMP
<sup>4</sup> Property Code 319760	<sup>5</sup> Property Name EL PRESIDENTE STATE 24 27 2 WXY	<sup>6</sup> Well Number 10H
<sup>7</sup> OGRID No. 372098	<sup>8</sup> Operator Name MARATHON OIL PERMIAN LLC	<sup>9</sup> Elevation 3135

### <sup>10</sup> Surface Location

UL or lot no.	Section	Township	Range	Lot Idn	Feet from the	North/South line	Feet from the	East/West line	County
P	2	T24S	R27E		281'	SOUTH	782'	EAST	EDDY

## " Bottom Hole Location If Different From Surface

UL or lot no.	Section	Township	Range	Lot Idn	Feet from the	North/South line	Feet from the	East/West line	County
A (LOT 1)	2	T24S	R27E		330'	NORTH	330'	EAST	EDDY

<sup>12</sup> Dedicated Acres 320.68	<sup>13</sup> Joint or Infill	<sup>14</sup> Consolidation Code	<sup>15</sup> Order No.
---	-------------------------------	----------------------------------	-------------------------

No allowable will be assigned to this completion until all interests have been consolidated or a non-standard unit has been approved by the division.

16	<p style="text-align: center;"><b>CORNER COORDINATES</b>  NAD 83, SPCS NM EAST  A - Y: 456216.24' / X: 594592.47'  B - Y: 456234.85' / X: 597233.83'  C - Y: 450923.92' / X: 597126.31'  D - Y: 450806.36' / X: 594475.07'</p>	<p style="text-align: center;"><b>CORNER COORDINATES</b>  NAD 27, SPCS NM EAST  A - Y: 456157.74' / X: 553409.75'  B - Y: 456176.31' / X: 556051.07'  C - Y: 450865.49' / X: 555943.44'  D - Y: 450747.97' / X: 553292.25'</p>	
SECTION 5	SECTION 4	SECTION 3	
SECTION 8	SECTION 9	SECTION 10	
	<p style="text-align: center;"><b>LAST TAKE POINT/BOTTOM HOLE LOCATION</b>  330' FSL 330' FEL  NAD 83, SPCS NM EAST  Y: 455902.47' / X: 596897.04'  LAT: 32.25322342N / LON: 104.15360654W  NAD 27, SPCS NM EAST  Y: 455843.94' / X: 555714.27'  LAT: 32.25310343N / LON: 104.15311011W</p>		
	<p style="text-align: center;"><b>FIRST TAKE POINT</b>  330' FSL 330' FEL  NAD 83, SPCS NM EAST  Y: 451239.89' / X: 596802.64'  LAT: 32.24040697N / LON: 104.15393709W  NAD 27, SPCS NM EAST  Y: 451181.46' / X: 555561.78'  LAT: 32.24028684N / LON: 104.15344101W</p>		
	<p style="text-align: center;"><b>SURFACE HOLE LOCATION</b>  281' FSL 782' FEL  NAD 83, SPCS NM EAST  Y: 451170.36' / X: 596348.68'  LAT: 32.24021790N / LON: 104.15540575W  NAD 27, SPCS NM EAST  Y: 451111.94' / X: 555165.83'  LAT: 32.24009779N / LON: 104.15490962W</p>	<p style="text-align: center;">SECTION 10 330'</p> <p style="text-align: center;">SECTION 15</p>	
SECTION 8	SECTION 9	SECTION 10	
SECTION 17	SECTION 16		

**"OPERATOR CERTIFICATION"**

I hereby certify that the information contained herein is true and complete to the best of my knowledge and belief, and that this organization either owns a working interest or unleased mineral interest in the land including the proposed bottom hole location or has a right to drill this well at this location pursuant to a contract with an owner of such a mineral or working interest, or to a voluntary pooling agreement or a compulsory pooling order heretofore entered by the division.

Jennifer Van Curen 10/24/17  
Signature Date

Jennifer Van Curen  
Printed Name

jvancuren@marathonoil.com  
E-mail Address

**"SURVEYOR CERTIFICATION"**

I hereby certify that the well location shown on this plat was plotted from field notes of actual surveys made by me or under my supervision, and that the same is true and correct to the best of my belief.

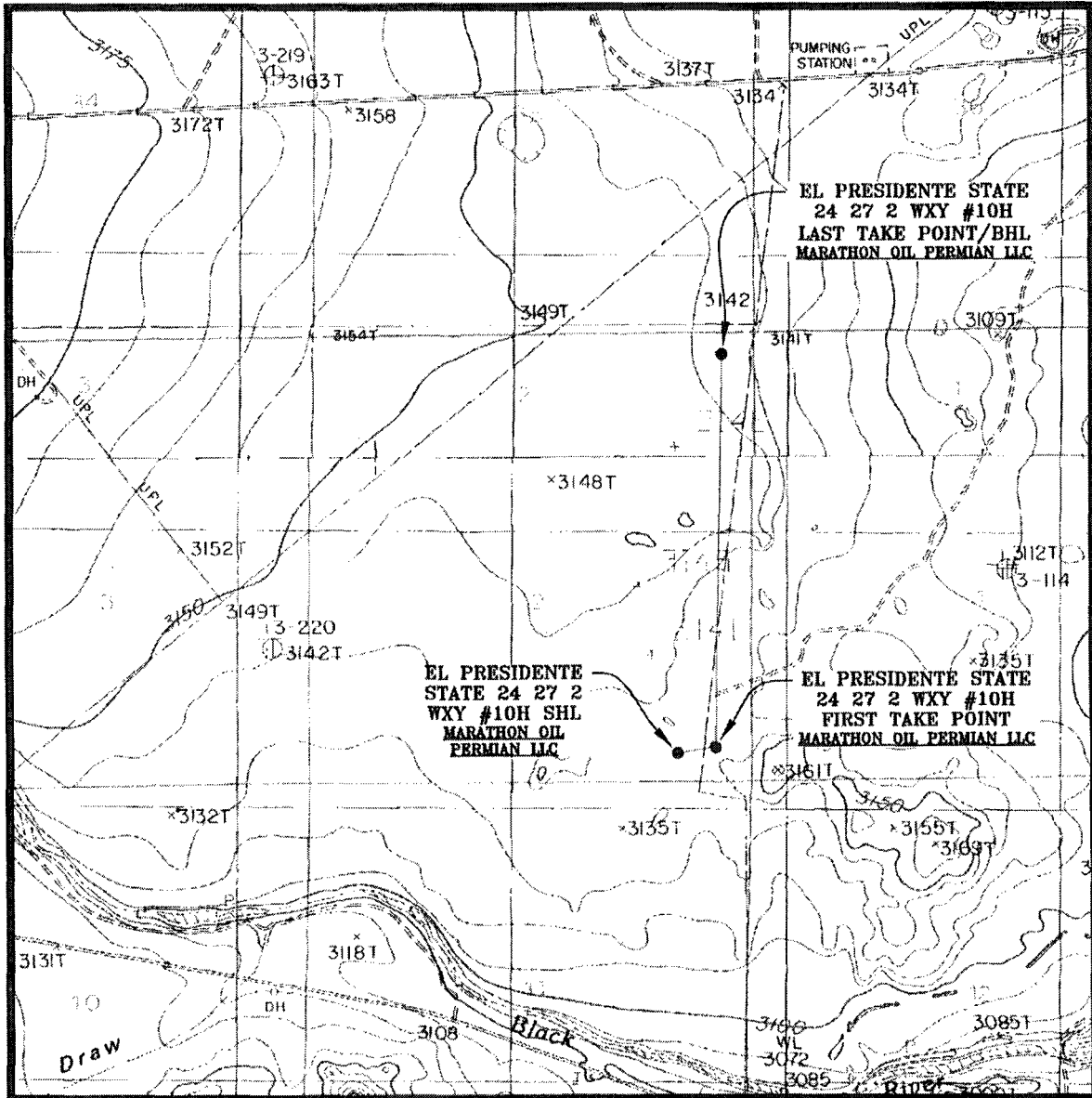
OCTOBER 19, 2017

Date of Survey

Signature and Seal of Professional Surveyor

Certificate Number LLOYD P. SHORT 21653

# LOCATION VERIFICATION MAP

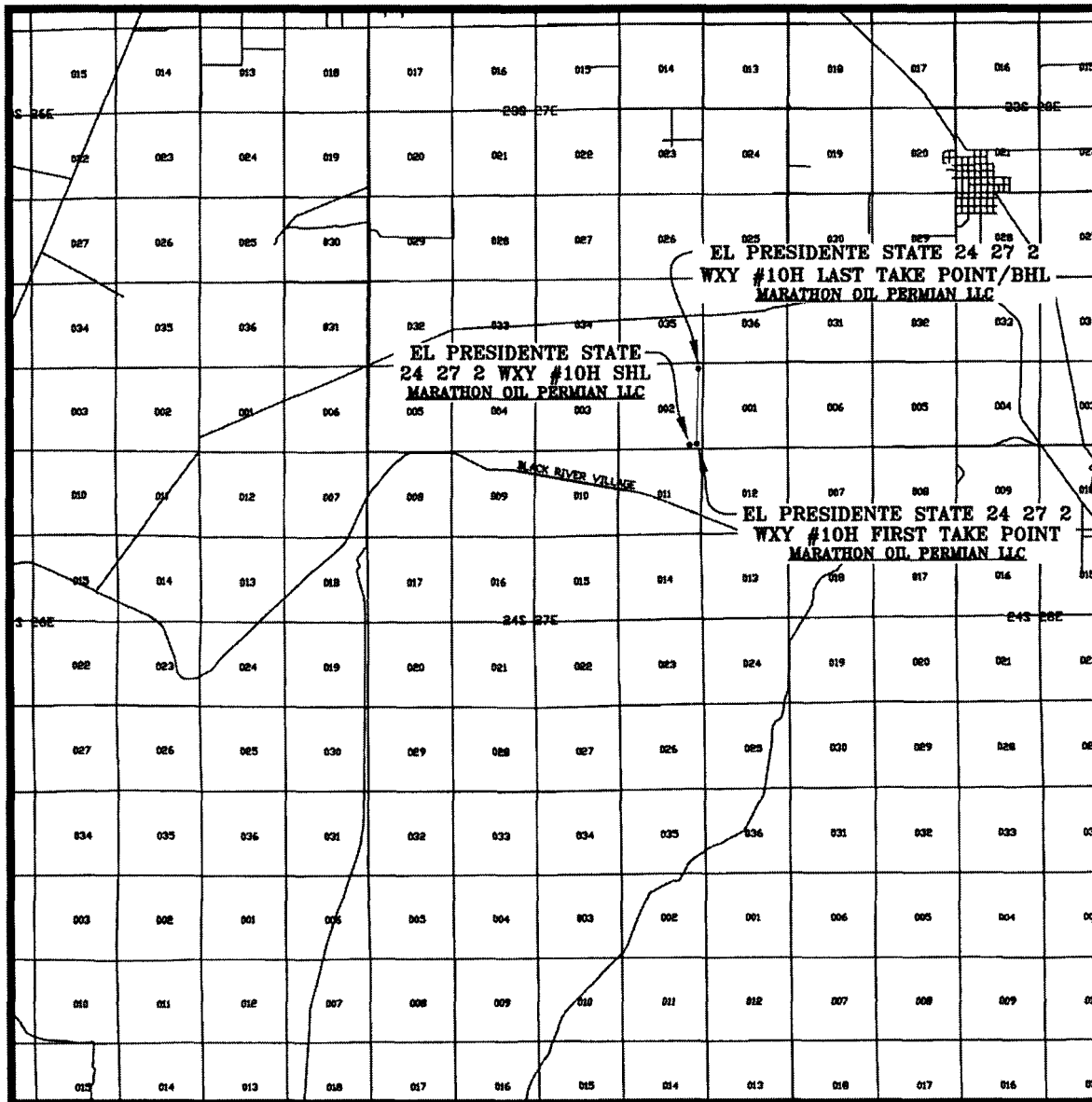


SEC. 2 TWP. 24-S RGE. 27-E  
 SURVEY: N.M.P.M.  
 COUNTY: EDDY  
 DESCRIPTION: 281' FSL & 782' FEL  
 ELEVATION: 3135'  
 OPERATOR: MARATHON OIL PERMIAN LLC  
 LEASE: EL PRESIDENTE STATE 24 27 2  
 U.S.G.S. TOPOGRAPHIC MAP: BOND DRAW, N.M.

SCALE: 1" = 2000'  
 CONTOUR INTERVAL = 20'

PREPARED BY:  
 R-SQUARED GLOBAL, LLC  
 1309 LOUISVILLE AVENUE, MONROE, LA 71201  
 318-323-6900 OFFICE  
 JOB No. R3787\_010

# VICINITY MAP



SEC. 2 TWP. 24-S RGE. 27-E  
 SURVEY: N.M.P.M.  
 COUNTY: EDDY  
 DESCRIPTION: 281' FSL & 782' FEL  
 ELEVATION: 3135'  
 OPERATOR: MARATHON OIL PERMIAN LLC  
 LEASE: EL PRESIDENTE STATE 24 27 2  
 U.S.G.S. TOPOGRAPHIC MAP: BOND DRAW, N.M.

SCALE: 1" = 2 MILES

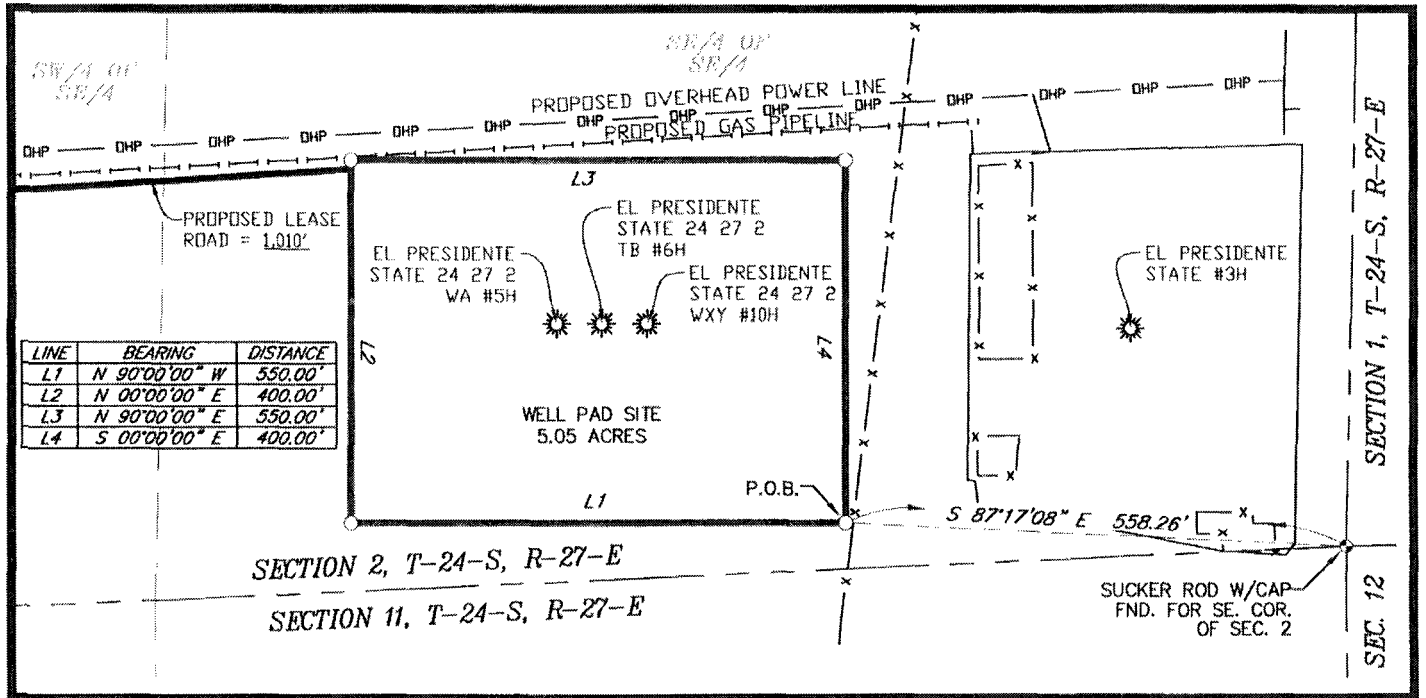
PREPARED BY:  
 R-SQUARED GLOBAL, LLC  
 1309 LOUISVILLE AVENUE, MONROE, LA 71201  
 318-323-8900 OFFICE  
 JOB No. R3787\_010

# WELL PAD SURFACE



100' 0' 100' 200'  
SCALE: 1" = 200'

SEC. 2 TWP. 24-S RGE. 27-E  
SURVEY: N.M.P.M.  
COUNTY: EDDY  
U.S.G.S. TOPOGRAPHIC MAP: BOND DRAW, N.M.



## FIELD NOTES DESCRIBING

A tract of land being 5.05 acres. Said tract being located in Section 2, Township 24 South, Range 27 East, New Mexico Principal Meridian, Eddy County, New Mexico.

Being more particularly described by metes and bounds as follows:

**BEGINNING** at a point from which a sucker rod with a cap found for the Southeast corner of said Section 2 bears, S 87°17'08" E a distance of 558.26 feet

### THENCE

N 90°00'00" W a distance of 550.00 feet to the Southwest corner of this tract, and  
N 00°00'00" E a distance of 400.00 feet to the Northwest corner of this tract, and  
N 90°00'00" E a distance of 550.00 feet to the Northeast corner of this tract, and  
S 00°00'00" E a distance of 400.00 feet to the **POINT OF BEGINNING**.

The total area of the herein described tract contains 5.05 acres of land.

All bearings and coordinates refer to NAD 83, New Mexico State Plane Coordinate System, East Zone, U.S. Survey Feet. (All bearings and distances are grid measurements.)

Title information furnished by Marathon Oil Permian LLC.

Reference accompanying Certificate of Survey prepared in conjunction with this legal description for easement.

STATE OF NEW MEXICO  
COUNTY OF EDDY

I, Lloyd P. Short, New Mexico Professional Surveyor No. 21653, do hereby certify that this easement survey plat and the actual survey on the ground upon which it is based were performed by me or under my direct supervision; that I am responsible for this survey; that this survey meets the minimum standards for surveying in New Mexico; and that it is true and correct to the best of my knowledge and belief. I further certify that this survey is not a land division or subdivision as defined in the New Mexico Subdivision Act and that this instrument is an easement survey plat crossing an existing tract or tracts.



LLDYD P. SHORT, PS No. 21653 DATE: OCTOBER 19, 2017

*Lloyd P. Short*

PLAT FOR A SURFACE SITE ON THE PROPERTY OF STATE OF NEW MEXICO EDDY COUNTY, NEW MEXICO			
1	10/19/17	REV. WELL NAME	DEF LPS
REV.	DATE	DESCRIPTION	BY CHKD
SHEET 4 OF 7		1309 LOUISVILLE AVE.	
DRAWN BY: DEF		MONROE, LA 71201	
DATE: 09/19/2017		(318) 323-6900	
CHECKED BY: LPS		FAX (318) 362-0064	

**BASIS OF BEARING**  
ALL BEARINGS AND COORDINATES REFER TO NAD 83, NEW MEXICO STATE PLANE COORDINATE SYSTEM, EAST ZONE, U.S. SURVEY FEET. (ALL BEARINGS AND DISTANCES ARE GRID MEASUREMENTS.)

LEGEND	P.O.B. POINT OF BEGINNING	R3787_010
— — — — —	PROP. LEASE RD.	— — — — —
— — — — —	EDGE OF ROAD	— — — — —
— — — — —	SURFACE SITE EDGE	— — — — —
— — — — —	EXIST. PIPELINE	— — — — —
●	MONUMENT	●
○	POWER POLE	○
— — — — —	ARC LIMITS	— — — — —
— — — — —	FENCE	— — — — —
— — — — —	SECTION LINE	— — — — —
— — — — —	OVERHEAD POWER	— — — — —
— — — — —	QUARTER SPLIT	— — — — —

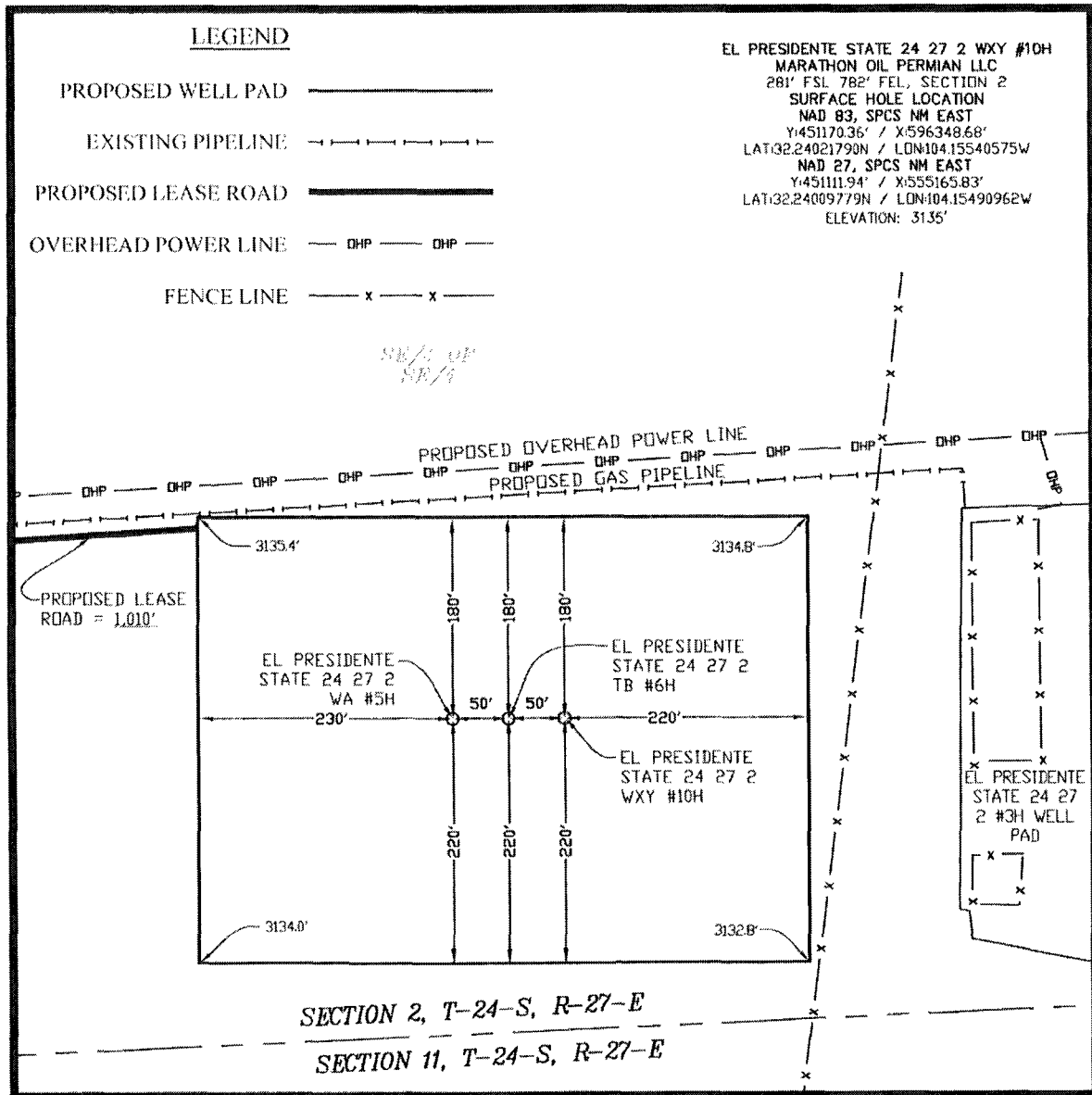
# WELL PAD TOPO

SEC. 2 TWP. 24-S RGE. 27-E

SURVEY: N.M.P.M.

COUNTY: EDDY

U.S.G.S. TOPOGRAPHIC MAP: BOND DRAW, N.M.

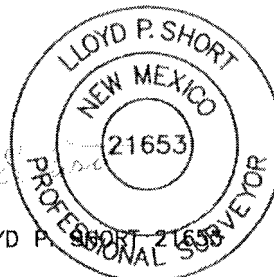


## DIRECTIONS TO LOCATION:

FROM THE INTERSECTION OF U.S. HIGHWAY 62/WEST GREENE STREET AND U.S. 180 W./U.S. 62 W./E. CANAL STREET IN CARLSBAD, NEW MEXICO, TRAVEL SOUTH ON U.S. 62 W./E. CANAL STREET FOR 2.0 MILES TO RIGHT (LEFT) ONTO U.S. 180S SOUTH. TRAVEL SOUTH ON U.S. 180S SOUTH FOR 11.2 MILES TO HIGBY HOLE ROAD ON THE RIGHT. TRAVEL SOUTH ON HIGBY HOLE ROAD FOR 0.4 MILES TO BOUNDS ROAD ON THE RIGHT. TRAVEL WEST ON BOUNDS ROAD FOR 3.0 MILES TO A LEASE ROAD ON THE LEFT. TRAVEL SOUTHWEST ON THE LEASE ROAD FOR 0.8 MILES TO LEASE ROAD ON THE LEFT. TRAVEL SOUTHWEST ON LEASE ROAD FOR 1.0 MILE THE NORTHEAST CORNER OF A WELL PAD. PROPOSED WELL PAD 1,057 FEET ON THE LEFT.

**NOTE:**  
THIS IS NOT A BOUNDARY SURVEY.  
APPARENT PROPERTY CORNERS AND  
PROPERTY LINES ARE SHOWN FOR  
INFORMATION ONLY. BOUNDARY DATA  
SHOWN IS FROM STATE OF NEW MEXICO  
OIL CONSERVATION DIVISION FORM C 102  
INCLUDED IN THIS SUBMITTAL.

OCTOBER 19, 2017

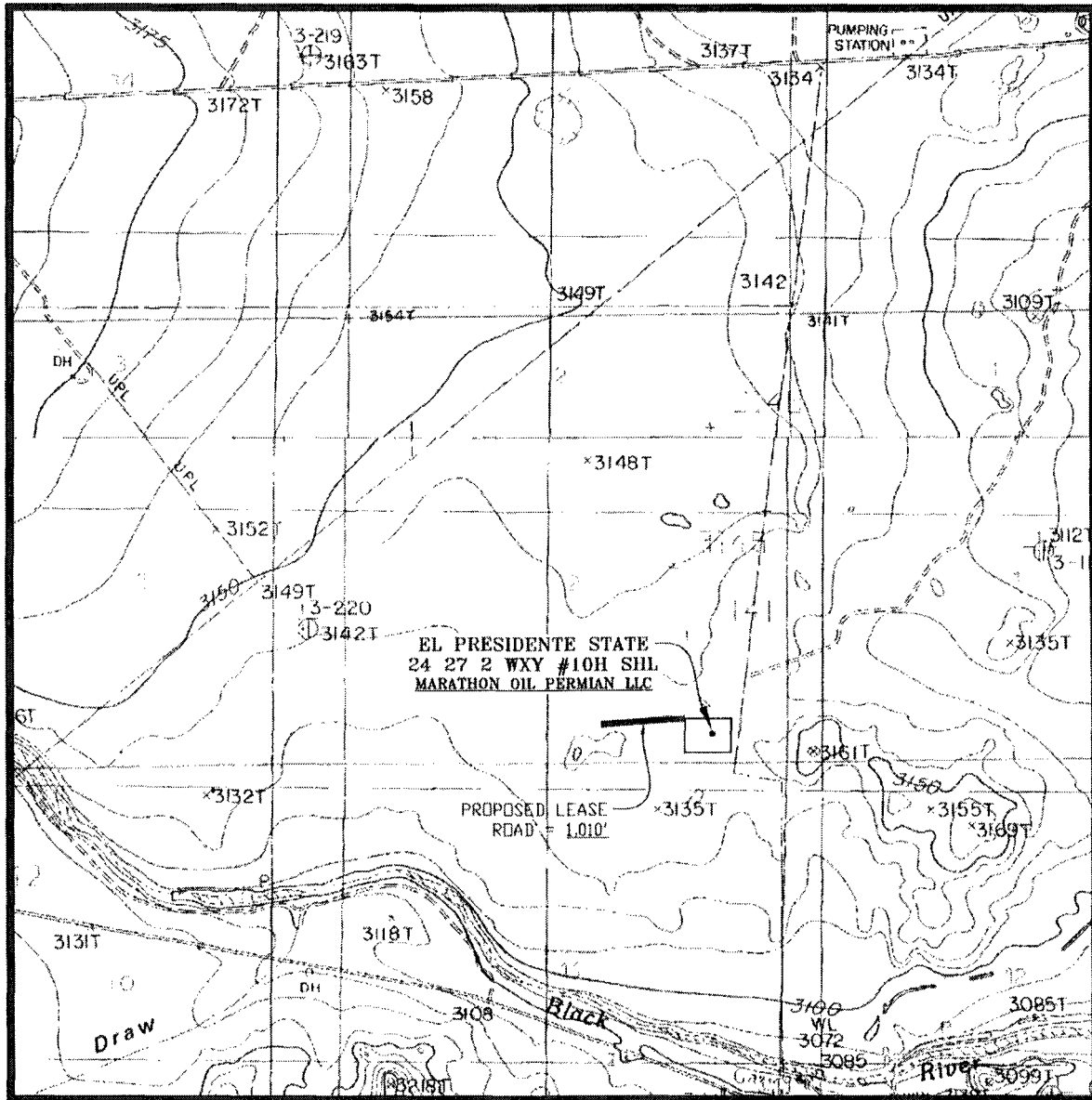


LLOYD P. SHORT

75' 0' 75' 150'  
SCALE: 1" = 150'

PREPARED BY:  
R-SQUARED GLOBAL, LLC  
1309 LOUISVILLE AVENUE, MONROE, LA 71201  
318-323-8900 OFFICE  
JOB No. R3767\_010

# WELL PAD LOCATION VERIFICATION MAP



SEC. 2 TWP. 24-S RGE. 27-E  
 SURVEY: N.M.P.M.  
 COUNTY: EDDY  
 DESCRIPTION: 281' FSL & 782' FEL  
 ELEVATION: 3135'  
 OPERATOR: MARATHON OIL PERMIAN LLC  
 LEASE: EL PRESIDENTE STATE 24 27 2  
 U.S.G.S. TOPOGRAPHIC MAP: BOND DRAW, N.M.

SCALE: 1" = 2000'  
 CONTOUR INTERVAL = 20'

PREPARED BY:  
 R-SQUARED GLOBAL, LLC  
 1300 LOUISVILLE AVENUE, MONROE, LA 71201  
 318-323-6900 OFFICE  
 JOB No. R3787\_010

# EXISTING ACCESS ROAD VICINITY MAP

EL PRESIDENTE STATE 24 27 2 WXY #10H

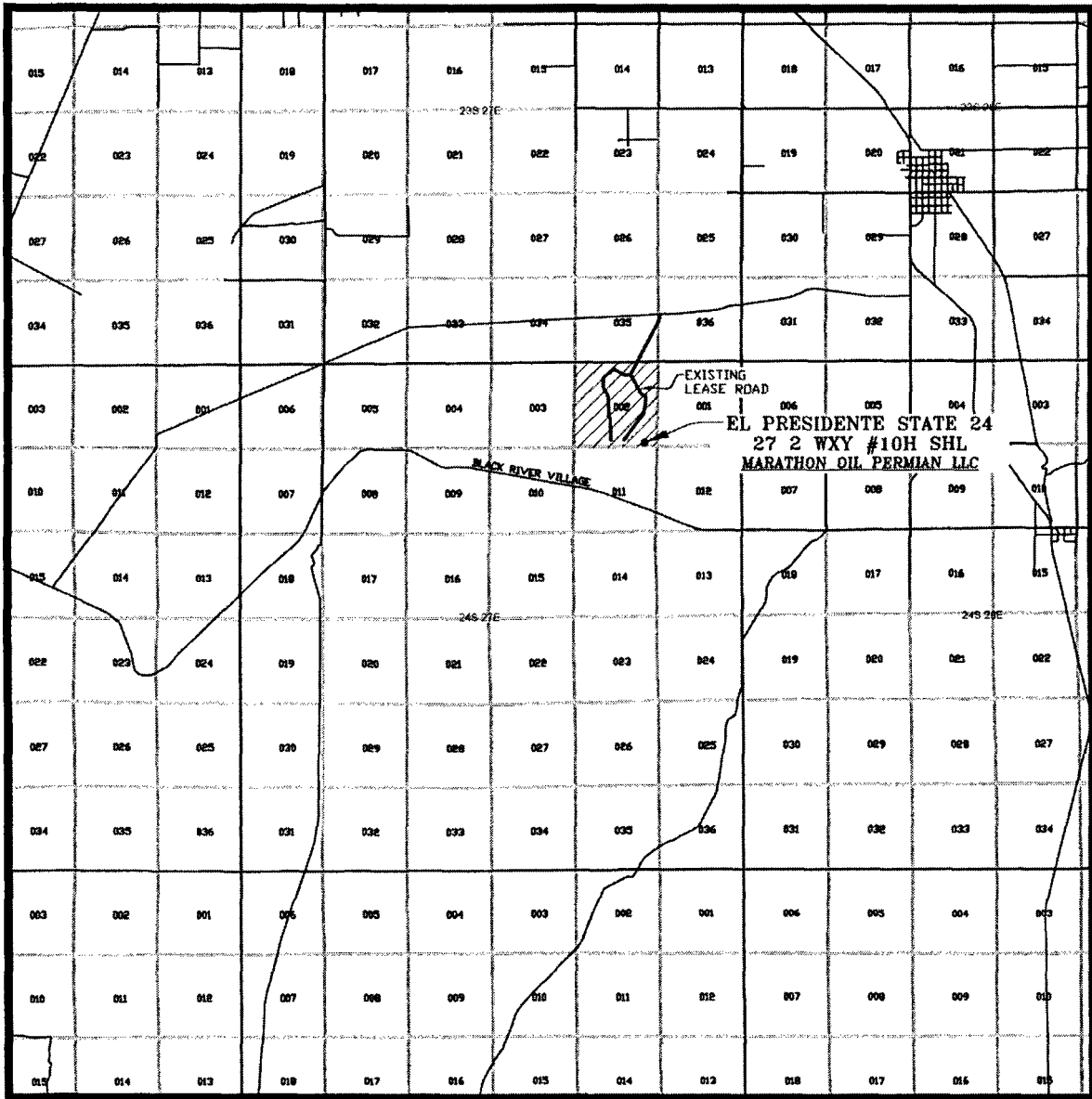
281' FSL & 782' FEL

SEC. 2 TWP. 24-S RGE. 27-E

SURVEY: N.M.P.M.

COUNTY: EDDY

U.S.G.S. TOPOGRAPHIC MAP: BOND DRAW, N.M.



SCALE: 1" = 2 MILES

PREPARED BY:  
R-SQUARED GLOBAL, LLC  
1309 LOUISVILLE AVENUE, MONROE, LA 71201  
318-323-8900 OFFICE  
JOB No. R3767\_010