

District I
1625 N. French Dr., Hobbs, NM 88240
District II
811 S. First St., Artesia, NM 88210
District III
1000 Rio Brazos Road, Aztec, NM 87410
District IV
1220 S. St. Francis Dr., Santa Fe, NM 87505

State of New Mexico
Energy, Minerals and Natural Resources Department

Submit Original
to Appropriate
District Office

Oil Conservation Division **NM OIL CONSERVATION**
1220 South St. Francis Dr. ARTESIA DISTRICT
Santa Fe, NM 87505
OCT 30 2017

GAS CAPTURE PLAN

RECEIVED

Date: 06-05-2017

☒ Original

Operator & OGRID No.: OXY USA INC. - 16696

☐ Amended - Reason for Amendment: _____

This Gas Capture Plan outlines actions to be taken by the Operator to reduce well/production facility flaring/venting for new completion (new drill, recomple to new zone, re-frac) activity.

Note: Form C-129 must be submitted and approved prior to exceeding 60 days allowed by Rule (Subsection A of 19.15.18.12 NMAC).

Well(s)/Production Facility – Name of facility

The well(s) that will be located at the production facility are shown in the table below.

Well Name	API	Well Location (ULSTR)	Footages	Expected MCF/D	Flared or Vented	Comments
Nimitz MDP1 12 Federal Com #6H	Pending	Unit P, Sec. 12, T24S, R30E	379 FSL 778 FEL	3229	0	
Nimitz MDP1 12 Federal Com #7H	Pending	Unit P, Sec. 12, T24S, R30E	404 FSL 868 FEL	3229	0	
Nimitz MDP1 13 Federal Com #2H	Pending	Unit P, Sec. 12 T24S, R30E	379 FSL 838 FEL	3229	0	
Nimitz MDP1 13 Federal Com #3H	Pending	Unit P, Sec 12 T24S, R30E	379 FSL 808 FEL	3229	0	

Gathering System and Pipeline Notification

Well(s) will be connected to a production facility after flowback operations are complete, where a gas transporter system is in place. The gas produced from production facility is dedicated to Enterprise Field Services, LLC ("Enterprise") and is connected to Enterprise gathering system located in Eddy County, New Mexico. OXY USA INC. ("OXY") provides (periodically) to Enterprise a drilling, completion and estimated first production date for wells that are scheduled to be drilled in the foreseeable future. In addition, OXY and Enterprise have periodic conference calls to discuss changes to drilling and completion schedules. Gas from these wells will be processed at Enterprise Processing Plant located in Sec. 36, Twn. 24S, Rng. 30E, Eddy County, New Mexico. The actual flow of the gas will be based on compression operating parameters and gathering system pressures.

Flowback Strategy

After the fracture treatment/completion operations, well(s) will be produced to temporary production tanks and gas will be flared or vented. During flowback, the fluids and sand content will be monitored. When the produced fluids contain minimal sand, the wells will be turned to production facilities. Gas sales should start as soon as the wells start flowing through the production facilities, unless there are operational issues on Enterprise system at that time. Based on current information, it is OXY's belief the system can take this gas upon completion of the well(s).

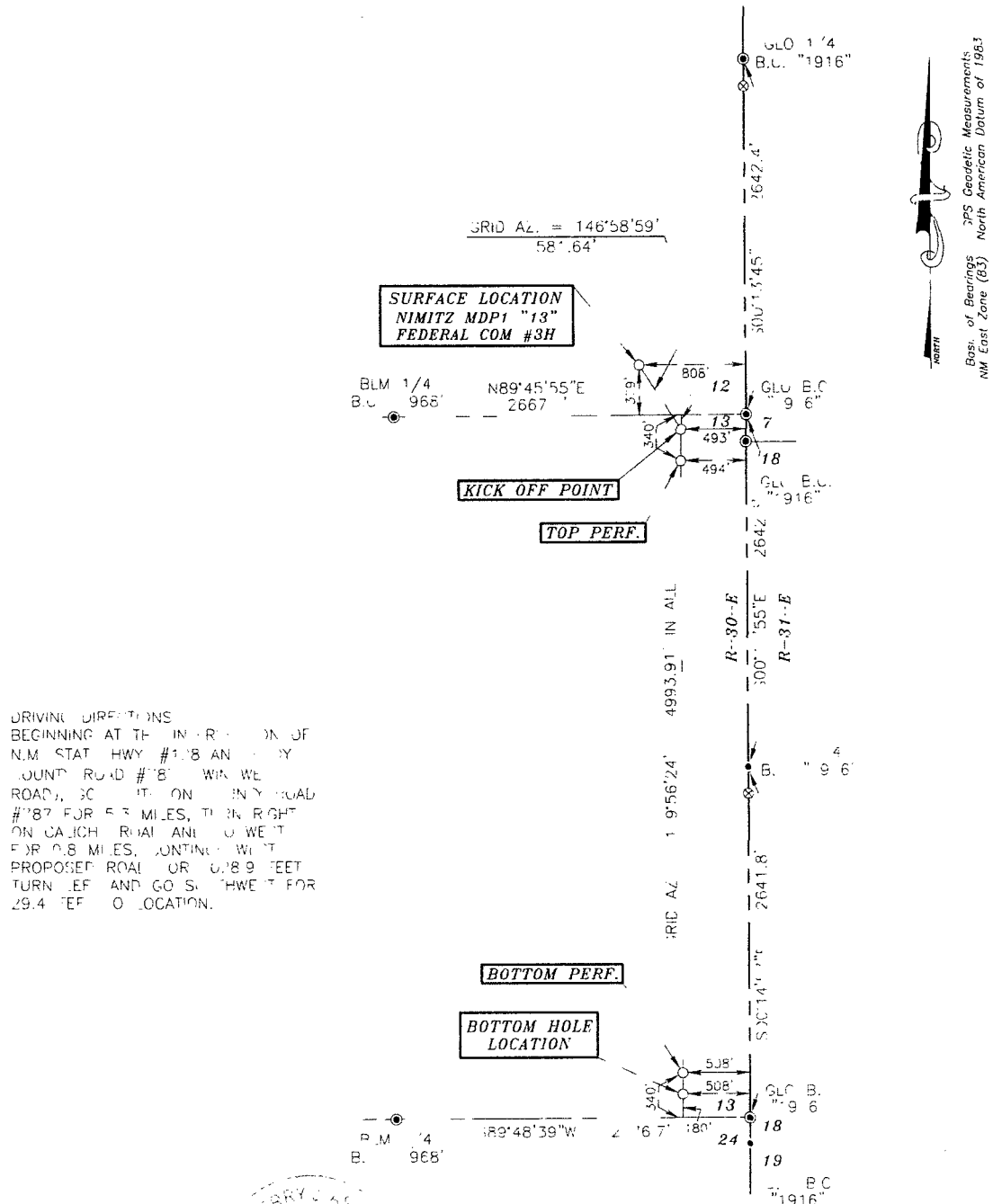
Safety requirements during cleanout operations from the use of underbalanced air cleanout systems may necessitate that sand and non-pipeline quality gas be vented and/or flared rather than sold on a temporary basis.

Alternatives to Reduce Flaring

Below are alternatives considered from a conceptual standpoint to reduce the amount of gas flared.

- Power Generation – On lease
 - Only a portion of gas is consumed operating the generator, remainder of gas will be flared
- Compressed Natural Gas – On lease
 - Gas flared would be minimal, but might be uneconomical to operate when gas volume declines
- NGL Removal – On lease
 - Plants are expensive, residue gas is still flared, and uneconomical to operate when gas volume declines

SECTIONS 12 & 13, TOWNSHIP 24 SOUTH, RANGE 30 EAST, N.M.P.M.,
EDDY COUNTY NEW MEXICO



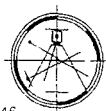
SURVEYORS CERTIFICATE

I, TERRY J. ASEI, NEW MEXICO PROFESSIONAL SURVEYOR NO. 15079, DO HEREBY CERTIFY THAT I CONDUCTED AND AM RESPONSIBLE FOR THIS SURVEY, THAT THIS SURVEY IS TRUE AND CORRECT TO THE BEST OF MY KNOWLEDGE AND BELIEF, AND MEETS THE "MINIMUM STANDARDS FOR SURVEYING IN NEW MEXICO" AS ADOPTED BY THE NEW MEXICO STATE BOARD OF REGISTRATION FOR PROFESSIONAL ENGINEERS AND SURVEYORS.

Terry J. Asel 5/18/2017
Terry J. Asel, N.M. R.P.L.S. No. 15079

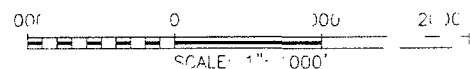
Asel Surveying

P.C. BOX 393 3rd W TAYLOR
HOBBS NEW MEXICO 575 393--9146



LEGEND

- ☐ DENOTES FROM MONUMENT AS NOTED
☒ DENOTES CALCULATED CORNER



OXY USA INC.

NIMITZ MDP1 "13" FEDERAL OM #3H
LOCATE: A 379' FS & 808' FE IN
SECTION 12, TOWNSHIP 24 SOUTH, RANGE
EAST N.M.P.M., EDDY COUNTY, NEW MEXICO

Survey Date: 04/10/17	Sheet 1 of 1 Sheets	
W.O. Number: 160203WL-b (Rev. B)	Drawn By: KA	Rev: B
Date: 05/04/17	160203WL-b	Scale: 1" = 100'