

# NM OIL CONSERVATION

ARTESIA DISTRICT

Form C-102

District I  
1625 N. French Dr., Hobbs, NM 88240  
Phone: (575) 393-6161 Fax: (575) 393-0720  
District II  
811 S. First St., Artesia, NM 88210  
Phone: (575) 748-1283 Fax: (575) 748-9720  
District III  
1000 Rio Brazos Road, Aztec, NM 87410  
Phone: (505) 334-6178 Fax: (505) 334-6170  
District IV  
1220 S. St. Francis Dr., Santa Fe, NM 87505  
Phone: (505) 476-3460 Fax: (505) 476-3462

State of New Mexico  
Energy, Minerals & Natural Resources Department  
OIL CONSERVATION DIVISION  
1220 South St. Francis Dr.  
Santa Fe, NM 87505

NOV 16 2017

Revised August 1, 2011

Submit one copy to appropriate  
District Office

RECEIVED

☐ AMENDED REPORT

## WELL LOCATION AND ACREAGE DEDICATION PLAT

<sup>1</sup> API Number 30-015-44153	<sup>2</sup> Pool Code 98220	<sup>3</sup> Pool Name Purple Sage, Wolfcamp (Gas)
<sup>4</sup> Property Code 317068	<sup>5</sup> Property Name HOSS 2/11 W2BO FEDERAL COM	
<sup>7</sup> OGRID NO. 14744	<sup>8</sup> Operator Name MEWBOURNE OIL COMPANY	<sup>6</sup> Well Number 1H
		<sup>9</sup> Elevation 2957'

### <sup>10</sup> Surface Location

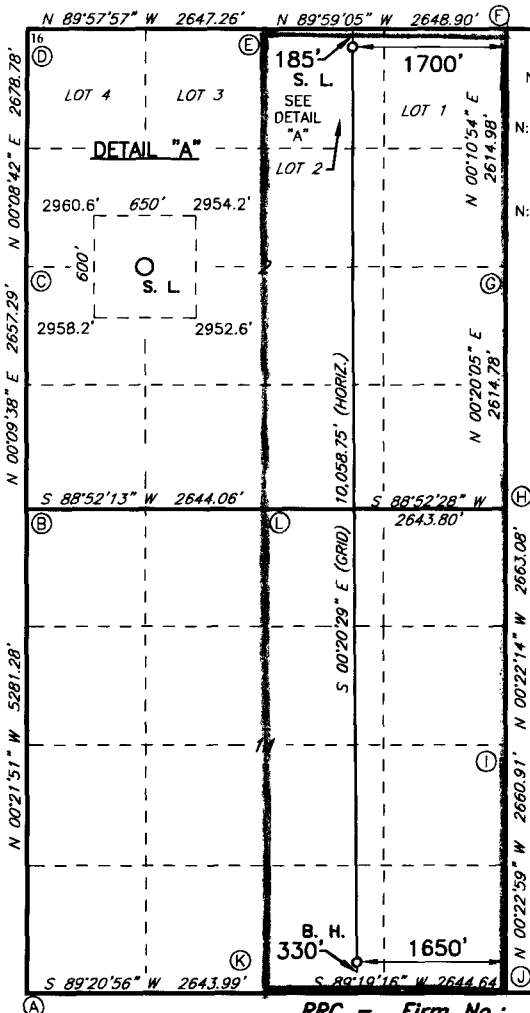
UL or lot no.	Section	Township	Range	Lot Idn	Feet from the	North/South line	Feet From the	East/West line	County
2	2	25S	28E		185	NORTH	1700	EAST	EDDY

### <sup>11</sup> Bottom Hole Location If Different From Surface

UL or lot no.	Section	Township	Range	Lot Idn	Feet from the	North/South line	Feet from the	East/West line	County
0	11	25S	28E		475	SOUTH	1660	EAST	EDDY

<sup>12</sup> Dedicated Acres 640	<sup>13</sup> Joint or Infill	<sup>14</sup> Consolidation Code	<sup>15</sup> Order No.
--------------------------------------	-------------------------------	----------------------------------	-------------------------

No allowable will be assigned to this completion until all interest have been consolidated or a non-standard unit has been approved by the division.



**GEODETIC DATA**  
NAD 27 GRID - NM EAST  
NAD 83 GRID - NM EAST

**SURFACE LOCATION**  
N: 424177.6 - E: 586320.2  
LAT: 32.16587364° N  
LONG: 104.05437356° W

**BOTTOM HOLE**  
N: 414121.3 - E: 586380.1  
LAT: 32.13822835° N  
LONG: 104.05426416° W

### CORNER DATA

NAD 27 GRID - NM EAST  
A: FOUND BRASS CAP  
N: 413749.5 - E: 582744.7

B: FOUND BRASS CAP  
N: 419029.5 - E: 582711.1

C: FOUND BRASS CAP  
N: 421686.2 - E: 582718.6

D: FOUND BRASS CAP  
N: 424364.4 - E: 582725.4

E: FOUND BRASS CAP  
N: 424362.8 - E: 585372.0

F: FOUND BRASS CAP  
N: 424362.1 - E: 588020.4

G: FOUND BRASS CAP  
N: 421747.7 - E: 588012.1

H: FOUND BRASS CAP  
N: 419133.6 - E: 587996.8

I: FOUND BRASS CAP "1940"  
N: 416471.1 - E: 588014.0

J: FOUND BRASS CAP  
N: 413810.9 - E: 588031.8

K: FOUND BRASS CAP "1940"  
N: 413779.6 - E: 585387.9

L: FOUND BRASS CAP  
N: 419081.7 - E: 585354.1

### <sup>17</sup> OPERATOR CERTIFICATION

I hereby certify that the information contained herein is true and complete to the best of my knowledge and belief, and that this organization either owns a working interest or unleased mineral interest in the land including the proposed bottom hole location or has a right to drill this well at this location pursuant to a contract with an owner of such a mineral or working interest, or to a voluntary pooling agreement or a compulsory pooling order heretofore entered by the division.

Signature: *Jackie Lathan* Date: 10/30/17  
Printed Name: Jackie Lathan

E-mail Address

### <sup>18</sup> SURVEYOR CERTIFICATION

I hereby certify that the well location shown on this plat was plotted from field notes of actual surveys made by me or under my supervision, and that the same is true and correct to the best of my belief.

11-2-2016

Date of Survey

Signature and Seal of Professional Surveyor

19680

Certificate Number

11-7-16 B.H. CHANGE

