

UNITED STATES
DEPARTMENT OF THE INTERIOR
BUREAU OF LAND MANAGEMENTOCD-ARTESIA
NM OIL CONSERVATION
ARTESIA DISTRICTFORM APPROVED
OMB NO. 1004-0137
Expires: January 31, 2018**SUNDRY NOTICES AND REPORTS ON WELLS**
Do not use this form for proposals to drill or to re-enter an abandoned well. Use form 3160-3 (APD) for such proposals.

DEC 04 2017

SUBMIT IN TRIPLICATE - Other instructions on page 2

RECEIVED

1. Type of Well <input type="checkbox"/> Oil Well <input type="checkbox"/> Gas Well <input checked="" type="checkbox"/> Other: INJECTION		5. Lease Serial No. NNMN02864
2. Name of Operator BOPCO LP		6. If Indian, Allottee or Tribe Name
3a. Address P O BOX 2760 MIDLAND, TX 79702		7. If Unit or CA/Agreement, Name and/or No.
3b. Phone No. (include area code) Ph: 432-683-2277		8. Well Name and No. POKER LAKE UNIT 170
4. Location of Well (Footage, Sec., T., R., M., or Survey Description) Sec 33 T23S R30E Mer NMP NESW 2180FSL 400FWL		9. API Well No. 30-015-31744
		10. Field and Pool or Exploratory Area NASH DRAW, DELAWARE
		11. County or Parish, State EDDY COUNTY, NM

12. CHECK THE APPROPRIATE BOX(ES) TO INDICATE NATURE OF NOTICE, REPORT, OR OTHER DATA

TYPE OF SUBMISSION	TYPE OF ACTION			
<input checked="" type="checkbox"/> Notice of Intent	<input type="checkbox"/> Acidize	<input type="checkbox"/> Deepen	<input type="checkbox"/> Production (Start/Resume)	<input type="checkbox"/> Water Shut-Off
<input type="checkbox"/> Subsequent Report	<input type="checkbox"/> Alter Casing	<input type="checkbox"/> Hydraulic Fracturing	<input type="checkbox"/> Reclamation	<input type="checkbox"/> Well Integrity
<input type="checkbox"/> Final Abandonment Notice	<input type="checkbox"/> Casing Repair	<input type="checkbox"/> New Construction	<input type="checkbox"/> Recomplete	<input type="checkbox"/> Other
	<input type="checkbox"/> Change Plans	<input checked="" type="checkbox"/> Plug and Abandon	<input type="checkbox"/> Temporarily Abandon	
	<input type="checkbox"/> Convert to Injection	<input type="checkbox"/> Plug Back	<input type="checkbox"/> Water Disposal	

13. Describe Proposed or Completed Operation: Clearly state all pertinent details, including estimated starting date of any proposed work and approximate duration thereof. If the proposal is to deepen directionally or recompletable horizontally, give subsurface locations and measured and true vertical depths of all pertinent markers and zones. Attach the Bond under which the work will be performed or provide the Bond No. on file with BLM/BIA. Required subsequent reports must be filed within 30 days following completion of the involved operations. If the operation results in a multiple completion or recompletion in a new interval, a Form 3160-4 must be filed once testing has been completed. Final Abandonment Notices must be filed only after all requirements, including reclamation, have been completed and the operator has determined that the site is ready for final inspection.

BOPCO, LP respectfully submits this sundry notice of intent to plug and abandon the referenced well.

1. MIRU plugging company. ND tree and NU 3K manual BOP. Function test BOP. POOH and lay down IPC tubing and packer.

2. PU 4-1/2' CIBP and RIH to 4,200' and set. Tag CIBP to verify. Pump 43 sxs Class C cmt on top of CIBP. (Perf plug, T/Del, B/Salt)

3. PUH to +/-3,550', spot 9.5# salt gel from +/- 3,550' to surface.

4. PUH to 950', spot 30 sxs CI C cmt from 950' - 500'. WOC & Tag. (T/Salt, 8-5/8" shoe plug)

Accepted for record - NMOCD

WITNESS

APPROVED

SEE ATTACHED FOR
CONDITIONS OF APPROVAL
SUBJECT TO LIKE
APPROVAL BY STATE

14. I hereby certify that the foregoing is true and correct.	
Electronic Submission #394335 verified by the BLM Well Information System For BOPCO LP, sent to the Carlsbad Committed to AFMSS for processing by JAMES AMOS on 11/13/2017 ()	
Name (Printed/Typed) TRACIE J CHERRY	Title REGULATORY ANALYST
Signature (Electronic Submission)	Date 11/07/2017

THIS SPACE FOR FEDERAL OR STATE OFFICE USE

Approved By <u>Paul R. Swartz</u> 11/16/2017	Title <u>TPET</u>	BUREAU OF LAND MANAGEMENT CARLSBAD FIELD OFFICE
Conditions of approval, if any, are attached. Approval of this notice does not warrant or certify that the applicant holds legal or equitable title to those rights in the subject lease which would entitle the applicant to conduct operations thereon.		
Office		

Title 18 U.S.C. Section 1001 and Title 43 U.S.C. Section 1212, make it a crime for any person knowingly and willfully to make to any department or agency of the United States any false, fictitious or fraudulent statements or representations as to any matter within its jurisdiction.

(Instructions on page 2)

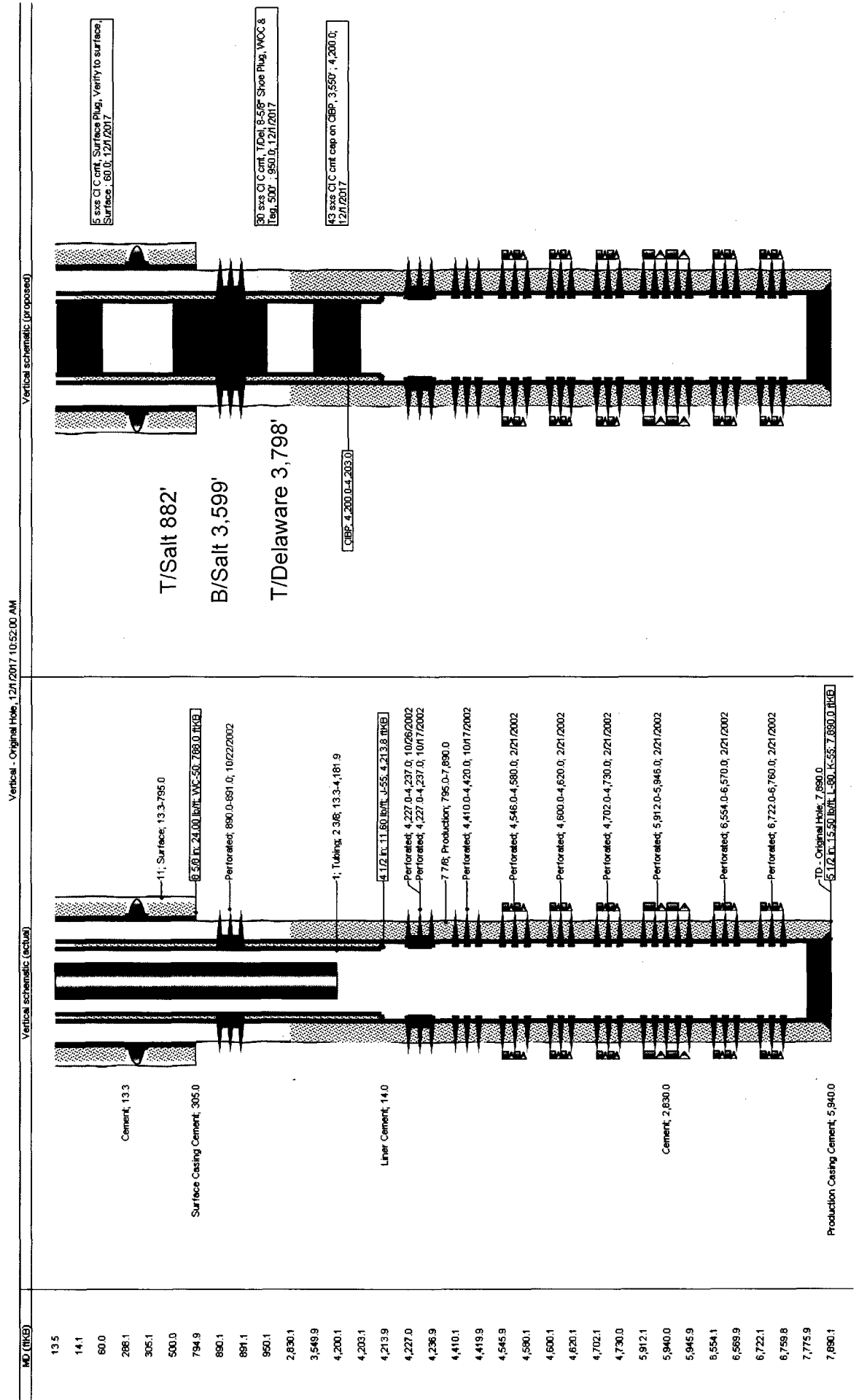
** OPERATOR-SUBMITTED ** OPERATOR-SUBMITTED ** OPERATOR-SUBMITTED **

Additional data for EC transaction #394335 that would not fit on the form

32. Additional remarks, continued

5. PUH to 60', spot 5 sxs Class C cmt from 60' to surface. Verify to surface (Surface plug).
6. ND BOP and cut off wellhead 5' below surface. RDMO equipment. Set P&A marker.

Poker Lake Unit #170 Current and Proposed WBD's



Conditions of Approval

BOPCO LP

Poker Lake - 170, API 3001531744

T23S-R30E, Sec 33, 2180FSL & 1980FWL

November 16, 2017

1. Area considerations for this location: A. Secretary Potash R-111-P (3 strings circulated) and B. High Cave Karst (two casing strings, both to circulate cement to surface). Note that the wellbore construction for this well never met those considerations. Reopening the top squeeze perfs <4227-37> were a ploy to facilitate plugging procedures because of the liner depth.
2. **Within 90 days of these conditions of approval for the processed Electronic Submission #394335 notice of intent begin wellbore operations or request an extension.**
3. **Operator is required to have the BLM approved NOI procedure with applicable conditions of approval on location during this workover operation.**
4. Subject to like approval by the New Mexico Oil Conservation Division.
5. Notify 575-361-2822 Eddy Co as work begins. If there is no response leave a voice mail with the API#, workover purpose, and a call back phone number.
6. Surface disturbance beyond the existing pad must have prior approval.
7. A closed loop system is required. The operator shall properly dispose of drilling/circulating contents at an authorized disposal site. Tanks are required for all operations, no excavated pits.
8. Functional H₂S monitoring equipment shall be on location.
9. Blow Out Prevention Equipment 2000 (2M) minimum to be used. All BOPE and workover procedures shall establish fail safe well control. Ram(s) for the work string(s) used is required equipment. Manual BOP closure system including a blind ram and pipe ram(s) designed to close on all (hand wheels or automatic locking devices) equipment installed regardless of BOP design. Function test the installed BOPE to 500psig when well conditions allow. Related equipment, (choke manifolds, kill trucks, gas vent or flare lines, etc.) employed when needed for reasonable well control requirements.
10. Created operation waste (i.e. trash, salts, chemicals, sewage, gray water, etc.) shall be safely contained and disposed of properly at a waste disposal facility. No waste material or fluid shall be disposed of on the well location or surrounding area. Porto-johns and trash containers will be on-location during any other crew-intensive operations.
11. The BLM PET is to run tbq tally and agree to cement volumes and placement. Sample each plug for cement curing time and tag and/or pressure test as requested by BLM PET witness.
12. **Cementing procedure is subject to the next three numbered paragraphs.**
13. Mix cement plugs to cover a minimum of 100ft plus 10ft for every 1,000ft to the bottom of the plug, rounding the number of necessary sacks up to the nearest 5 sacks. Never use less than 25sx. Examples: A cement plug set at 8000 in 7" casing would require a min of 35sx. A 25sx plug in 5 ½" casing should cover 250ft, which may exceed 100ft plus 10ft per 1000ft.
14. Class H > 7500ft & C < 7500ft) neat cement plugs(s) will be necessary. For any plug that requires a tag or pressure test a minimum WOC time of 4 hours(C) & 8 hours(H) is

- recommended. Isolation plugs of Class "C" neat cement to be mixed 14.8#/gal, 1.32 ft³/sx, 6.3gal/sx water and Class "H" neat cement to be mixed 16.4#/gal, 1.06ft³/sx, 4.3gal/sx water.
15. Minimum requirement for mud placed between plugs is 25 sacks of saltwater gel per 100 barrels in 9 lb/gal brine.
 16. **RIH to about 7890' and tag bottom. Spot a min 50sx Class "H" cmt plug from PBTD. WOC, and tag the plug with tbg at 7500' or above, covering the Bone Spring Lime and Avalon Sand formation tops.**
 17. **Set the 4 1/2" CIBP at 4200' (within 100' of the top perf of 4227'). Pressure test the casing to 500psig after setting CIBP.**
 18. Secretary Potash R-111-P sections require a solid cement plug across the salt section.
 19. **Spot a min of 90sx Class "C" cmt plug on the CIBP.**
 20. **WOC, and tag the plug with tbg at 2894' or above. Top of cmt behind 5 1/2" reported to be 2830 by a temperature survey taken 02/22/2002.**
 21. **Open the 5 1/2" x 8 5/8" csg vent and confirm that annulus is isolated to below the 8 5/8" shoe at 788' with a pressure test. With a positive test, proceed. A negative test requires modification of the procedure.**
 22. **Perf the through 4 1/2" and 5 1/2" csgs at 2800' and 930'. Set a pkr below 930' and establish circulation between the two sets of perfs.**
 23. **Set up for a suicide sqz. A 275sx Class "C" slurry may be sufficient to cover the salt section behind the 5 1/2" csg from 2800' to 930'.**
 24. **Use approximately 130sx Class "C" cmt plug to cover the (2800' to 930') salt section inside the 4 1/2".**
 25. **Perf at 60' or below. Establish circulation through the 4 1/2" x 8 5/8" annulus. Fill with (±20sx) balanced "C" cmt plug and verify the 4 1/2" x 5 1/2" x 8 5/8" annulus and 8 5/8" csg from 60' cemented to surface.**
 26. **File subsequent sundry Form 3160-5 within 30 days of workover procedures. Include (dated daily) descriptions of the well work, i.e. procedure descriptions and setting depths of each plug in the subsequent sundry.**

Reclamation Objectives and Procedures

In Reply Refer To: 1310

Reclamation Objective: At final abandonment, well locations, production facilities, and access roads must undergo "final" reclamation so that the character and productivity of the land and water are restored.

The long-term objective of final reclamation is to set the course for eventual ecosystem restoration, including the restoration of the natural vegetation community, hydrology, and wildlife habitats. In most cases this means returning the land to a condition approximating or equal to that which existed prior to the disturbance. The final goal of reclamation is to restore the character of the land and water to its pre-disturbance condition. The operator is generally not responsible for achieving full ecological restoration of the site. Instead, the operator must achieve the short-term stability, visual, hydrological, and productivity objectives of the surface management agency and take steps necessary to ensure that long-term objectives will be reached through natural processes.

To achieve these objectives, remove any and all contaminants, scrap/trash, equipment, pipelines and powerlines. Strip and remove caliche, contour the location to blend with the surrounding landscape, re-distribute the native soils, provide erosion control as needed, rip and seed as needed. This will apply to well pads, facilities, and access roads. Barricade all access road(s) at the starting point. If reserve pits have not been adequately reclaimed due to salts or other contaminants, propose a plan for BLM approval to provide restoration of the pit area.

1. The Application for Permit to Drill or Reenter (APD, Form 3160-3), Surface Use Plan of Operations should have included adequate measures for stabilization and reclamation of disturbed lands. Oil and Gas operators must plan for reclamation, both interim and final, up front in the APD process as per Onshore Oil and Gas Order No. 1.
2. For locations and/or access roads not having an approved plan, or an inadequate plan for surface reclamation the operator must submit a proposal describing the procedures for reclamation. The appropriate time for submittal would be when filing the Notice of Intent, or with the Subsequent Sundry Report of Abandonment on Form 3160-5. The final reclamation goal is to be completed within 6 months of wellbore abandonment.
3. With an approved Surface Use Plan of Operation and/or an approved Sundry Notice, you are free to proceed with reclamation as per approved APD. If you have issues or concerns, contact a BLM specialist to assist you. It may be in your interest to have a BLM specialist look at the location and access road prior to the removal of reclamation equipment to ensure that it meets BLM objectives.
4. Upon reclamation conclusion submit a Form 3160-5, Subsequent Report of Reclamation. This will prompt a BLM specialist to inspect the location to verify work was completed as per approved plans.
5. The BLM approved Subsequent Report of Reclamation will be your notice that the native soils, contour and seedbed have been tentatively reestablished. If the objectives have not been met BLM will be notify the operator of the required corrective actions.
6. It is the responsibility of the operator to monitor these locations and/or access roads until such time the full BLM objective has been met. If after two growing seasons the location and/or access roads are not showing the potential for successful revegetation, additional actions may be needed. When you feel the full BLM objectives have been met, submit a Final Abandonment Notice (FAN) Form 3160-5, stating that all reclamation requirements have been achieved and the location and/or access road is ready for a final abandonment inspection.
7. At this time a BLM specialist will again inspect the location and/or access road. If the native soils and contour have been restored, and the revegetation is successful, the FAN will be approved, releasing the operator of any further liability for the location and/or access road. If the location and/or access road have not achieved the objective, you will be notified as to additional work needed or additional time being needed to achieve the objective.

If there are any questions, please feel free to contact any of the following specialists:

Jim Amos
Supervisory Environmental Protection Specialist
575-234-5909, 575-361-2648 (Cell)

Robertson, Jeffery
Natural Resource Specialist
575-234-2230, 575-706-1920 (Cell)

Trishia Bad Bear
Natural Resource Specialist
575-393-3612, 575-390-2258 (Cell)

Vance Wolf
Natural Resource Specialist
575-234-5979

Jesse Bassett
Natural Resource Specialist
575-234-5913, 575-499-5114 (Cell)

Brooke Wilson
Natural Resource Specialist
575-234-6237

Paul Murphy
Natural Resource Specialist
575-234-5975, 575-885-9264 (Cell)

Arthur Arias
Environmental Protection Specialist
575-234-6230, 575-499-3378 (Cell)

Henryetta Price
Environmental Protection Specialist
575-234-5951, 575-706-2780 (Cell)

Shelly Tucker
Environmental Protection Specialist
575-234-5905, 575-361-0084 (Cell)

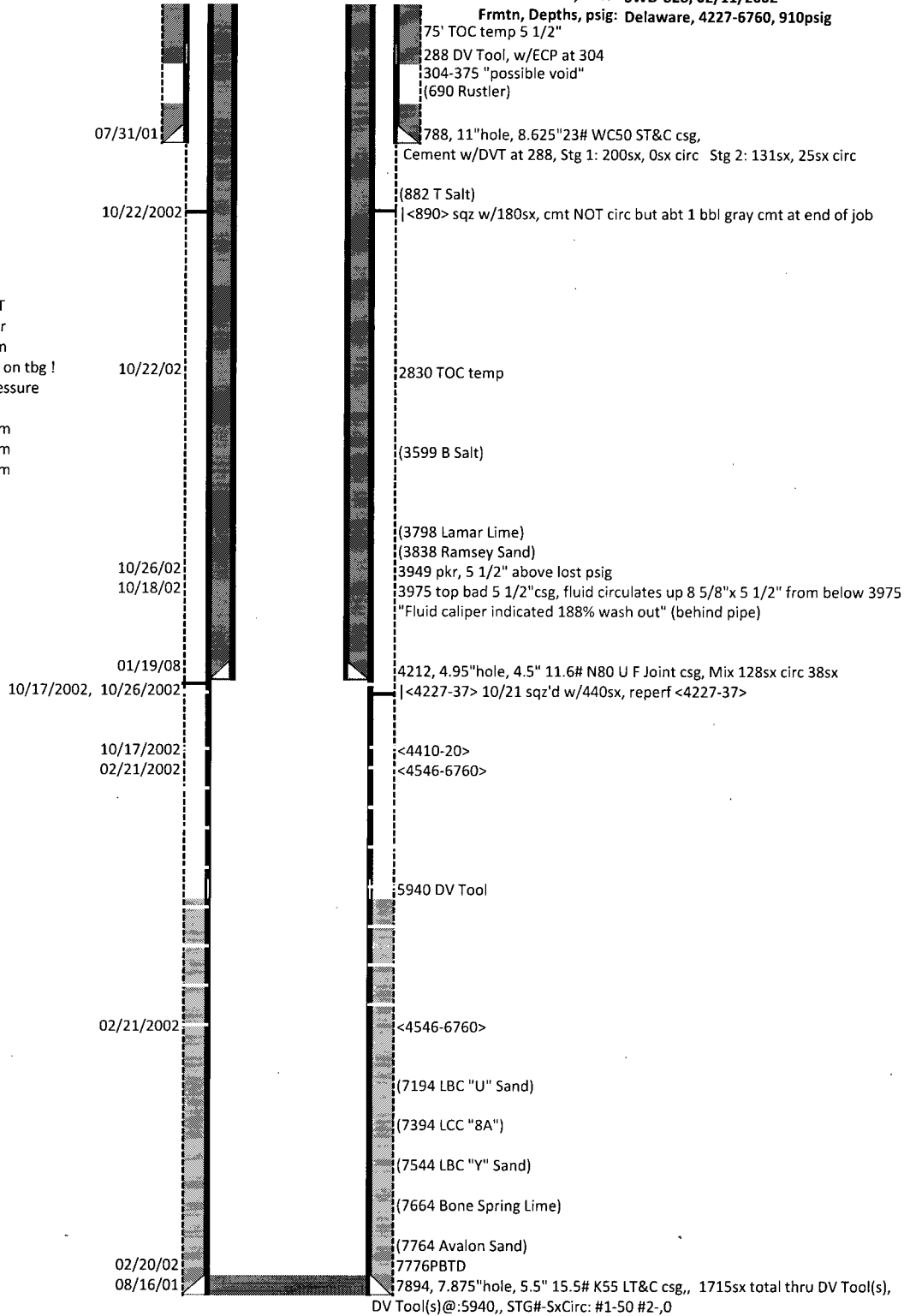
Operator: BOPCO, L.P.
 Surface Lease: NM02864
 Case No: NM02864
 Subsurface Concerns for Casing Designs: R111P HiCvKst
 Well Status: MW
 Spud date: 7/30/2001
 Plug'd Date:
 Reentry Date:

BHL: NM02864
 Lease Agreement

Well: POKER LAKE-170
 API: 3001531744
 @ Srfce: T23S-R30E,33.2180s1980w
 @ M TD: T23S-R30E,33.2180s1980w
 Estate: F/F/F

KB: 3427
 GL: 3414
 Corr: 13
 OCD Admn Order, date: SWD-828, 02/11/2002
 Frmtn, Depths, psig: Delaware, 4227-6760, 910psig

11/12/2002 Ran questionable MIT
 11/12/2002 Completed as Injector
 03/12/2002 MIT held 340psig 30m
 07/02/2003 MIT ran with 820psig on tbg !
 10/18/2007 MIT failed to hold pressure
 01/19/2008 Install 4 1/2" liner
 01/23/2008 MIT held 400psig 30m
 10/27/2010 MIT held 550psig 30m
 10/21/2015 MIT held 530psig 30m



last updated: 06/30/2016