

District I  
1625 N. French Dr., Hobbs, NM 88240  
Phone: (575) 393-6161 Fax: (575) 393-0720  
District II  
511 S. First St., Artesia, NM 88210  
Phone: (575) 746-1283 Fax: (575) 746-9720  
District III  
1000 Rio Grande Road, Aztec, NM 87410  
Phone: (505) 334-6178 Fax: (505) 334-6170  
District IV  
1220 S. St. Francis Dr., Santa Fe, NM 87505  
Phone: (505) 476-3460 Fax: (505) 476-3462

State of New Mexico  
Energy, Minerals & Natural Resources Department  
**OIL CONSERVATION DIVISION**  
1220 South St. Francis Dr.  
Santa Fe, NM 87505

Dec 15 2017

Form C-102

Revised August 1, 2011

Submit one copy to appropriate

RECEIVED

District Office

AMENDED REPORT  
As Drilled

WELL LOCATION AND ACREAGE DEDICATION PLAT

API Number 30-015-44295	Pool Code 13367	Pool Name COTTON DRAW; BONE SPRING
Property Code 317687	Property Name PALLADIUM MDP1 "7-6" FEDERAL COM	Well Number 4H
OGRID No. 16696	Operator Name OXY USA INC.	Elevation 3534.0'

Surface Location

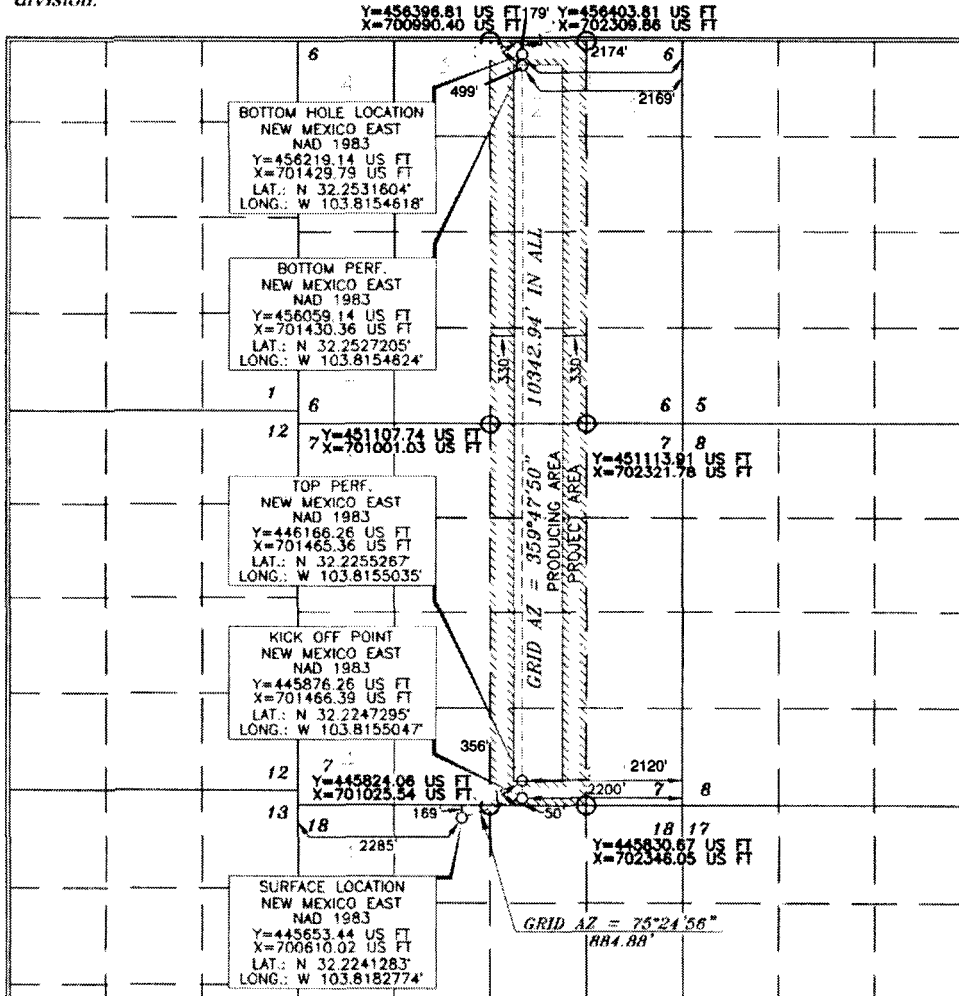
UL or lot no.	Section	Township	Range	Lot Idn	Feet from the	North/South line	Feet from the	East/West line	County
C	18	24 SOUTH	31 EAST, N.M.P.M.		169'	NORTH	2285'	WEST	EDDY

Bottom Hole Location If Different From Surface

UL or lot no.	Section	Township	Range	Lot Idn	Feet from the	North/South line	Feet from the	East/West line	County
2	6	24 SOUTH	31 EAST, N.M.P.M.		179'	NORTH	2174'	EAST	EDDY

Dedicated Acres 320	Joint or Infill Y	Consolidation Code	Order No. TP: 356 FSL 2120 FEL, BP: 499 FNL 2169 FEL
------------------------	----------------------	--------------------	---

No allowable will be assigned to this completion until all interests have been consolidated or a non-standard unit has been approved by the division.



**OPERATOR CERTIFICATION**

I hereby certify that the information contained herein is true and complete to the best of my knowledge and belief, and that this organization either owns a working interest or unleased mineral interest in the land including the proposed bottom hole location or has a right to drill this well at this location pursuant to a contract with an owner of such a mineral or working interest, or to a voluntary pooling agreement or a compulsory pooling order heretofore entered by the division.

*Sarah Mitchell* 12/11/17  
Signature Date

Sarah Mitchell  
Printed Name  
sarah\_mitchell@oxy.com  
E-mail Address

**SURVEYOR CERTIFICATION**

I hereby certify that the well location shown on this plat was plotted from the field notes of actual surveys made by me or under my supervision, and that the same is true and correct to the best of my belief.

*Terry J. Asch*  
Date of Survey June 2, 2016  
Signature and Seal of Professional Surveyor

Terry J. Asch 9/23/2016  
Certificate Number 15079

WD# 150602WL-b-XY (Rev. A) (KA)