

UNITED STATES  
DEPARTMENT OF THE INTERIOR  
BUREAU OF LAND MANAGEMENTFORM APPROVED  
OMB NO. 1004-0137  
Expires: January 31, 2018**SUNDRY NOTICES AND REPORTS ON WELLS**  
*Do not use this form for proposals to drill or to re-enter an abandoned well. Use form 3160-3 (APD) for such proposals.*5. Lease Serial No.  
NMNM113937

6. If Indian, Allottee or Tribe Name

7. If Unit or CA/Agreement, Name and/or No.

**SUBMIT IN TRIPLICATE - Other instructions on page 2**

1. Type of Well

☒ Oil Well ☐ Gas Well ☐ Other

8. Well Name and No.

CRAIG FEDERAL COM 12H

2. Name of Operator  
COG OPERATING LLCContact: STORMI DAVIS  
E-Mail: sdavis@concho.com9. API Well No.  
30-015-442083a. Address  
2208 WEST MAIN  
ARTESIA, NM 882103b. Phone No. (include area code)  
Ph: 575-748-694610. Field and Pool or Exploratory Area  
WILDCAT; BONE SPRING

4. Location of Well (Footage, Sec., T., R., M., or Survey Description)

Sec 1 T26S R26E Mer NMP NWNW 675FNL 790FWL

11. County or Parish, State

EDDY COUNTY, NM

**12. CHECK THE APPROPRIATE BOX(ES) TO INDICATE NATURE OF NOTICE, REPORT, OR OTHER DATA**

TYPE OF SUBMISSION	TYPE OF ACTION			
<input type="checkbox"/> Notice of Intent	<input type="checkbox"/> Acidize	<input type="checkbox"/> Deepen	<input type="checkbox"/> Production (Start/Resume)	<input type="checkbox"/> Water Shut-Off
<input checked="" type="checkbox"/> Subsequent Report	<input type="checkbox"/> Alter Casing	<input type="checkbox"/> Hydraulic Fracturing	<input type="checkbox"/> Reclamation	<input type="checkbox"/> Well Integrity
<input type="checkbox"/> Final Abandonment Notice	<input type="checkbox"/> Casing Repair	<input type="checkbox"/> New Construction	<input type="checkbox"/> Recomplete	<input checked="" type="checkbox"/> Other
	<input type="checkbox"/> Change Plans	<input type="checkbox"/> Plug and Abandon	<input type="checkbox"/> Temporarily Abandon	
	<input type="checkbox"/> Convert to Injection	<input type="checkbox"/> Plug Back	<input type="checkbox"/> Water Disposal	

13. Describe Proposed or Completed Operation: Clearly state all pertinent details, including estimated starting date of any proposed work and approximate duration thereof. If the proposal is to deepen directionally or recompleat horizontally, give subsurface locations and measured and true vertical depths of all pertinent markers and zones. Attach the Bond under which the work will be performed or provide the Bond No. on file with BLM/BIA. Required subsequent reports must be filed within 30 days following completion of the involved operations. If the operation results in a multiple completion or recompleat in a new interval, a Form 3160-4 must be filed once testing has been completed. Final Abandonment Notices must be filed only after all requirements, including reclamation, have been completed and the operator has determined that the site is ready for final inspection.

9/15/17 to 10/21/17 Test annulus to 1500# for 30 mins. Good test. Ran CBL. TOC @ 1170'. Set CBP @ 18665'. Perf 8729-18640' (2816). Acdz w/146,832 gals 15% acid. Frac w/19,894,912# sand and 22,086,236 gals fluid.

10/29/17 to 11/1/17 Drilled out CFP's. Clean down to CBP @ 18665'.

11/2/17 Set 2 7/8" 6.5# L-80 tbg @ 7238' & pkr @ 7228'. Installed gas-lift system.

11/8/17 Began flowing back & testing.

11/9/17 Date of first production.

14. I hereby certify that the foregoing is true and correct.

**Electronic Submission #396895 verified by the BLM Well Information System  
For COG OPERATING LLC, sent to the Carlsbad**

Name (Printed/Typed) STORMI DAVIS

Title PREPARER

Signature (Electronic Submission)

Date 12/05/2017

**THIS SPACE FOR FEDERAL OR STATE OFFICE USE**

Approved By

Title

Date

Conditions of approval, if any, are attached. Approval of this notice does not warrant or certify that the applicant holds legal or equitable title to those rights in the subject lease which would entitle the applicant to conduct operations thereon.

Office

Pending BLM approvals will  
subsequently be reviewed  
and scanned

Initialed

Title 18 U.S.C. Section 1001 and Title 43 U.S.C. Section 1212, make it a crime for any person knowing  
States any false, fictitious or fraudulent statements or representations as to any matter within its jurisd

(Instructions on page 2)

**\*\* OPERATOR-SUBMITTED \*\* OPERATOR-SUBMITTLE***BC 12-19-17*

UNITED STATES  
DEPARTMENT OF THE INTERIOR  
BUREAU OF LAND MANAGEMENTNM OIL CONSERVATION  
ARTESIA DISTRICT

DEC 07 2017

FORM APPROVED  
OMB No. 1004-0137  
Expires: July 31, 2010

## WELL COMPLETION OR RECOMPLETION REPORT AND LOG

5. Lease Serial No.  
NMNM113937

1a. Type of Well <input checked="" type="checkbox"/> Oil Well <input type="checkbox"/> Gas Well <input type="checkbox"/> Dry <input type="checkbox"/> Other		6. If Indian, Allottee or Tribe Name	
b. Type of Completion <input checked="" type="checkbox"/> New Well <input type="checkbox"/> Work Over <input type="checkbox"/> Deepen <input type="checkbox"/> Plug Back <input type="checkbox"/> Diff. Resvr. Other _____		7. Unit or CA Agreement Name and No.	
2. Name of Operator COG OPERATING LLC		8. Lease Name and Well No. CRAIG FEDERAL COM 12H	
3. Address 2208 WEST MAIN ARTESIA, NM 88210		9. API Well No. 30-015-44208	
4. Location of Well (Report location clearly and in accordance with Federal requirements)* At surface NWNW 675FNL 790FWL At top prod interval reported below Sec 25 T25S R26E Mer NMP At total depth NWNW 210FNL 329FWL		10. Field and Pool, or Exploratory WILDCAT; BONE SPRING	
14. Date Spudded 07/23/2017		15. Date T.D. Reached 08/10/2017	
16. Date Completed <input type="checkbox"/> D & A <input checked="" type="checkbox"/> Ready to Prod. 11/08/2017		17. Elevations (DF, KB, RT, GL)* 3370 GL	
18. Total Depth: MD 18767 TVD 7912		19. Plug Back T.D.: MD 18665 TVD 7914	
20. Depth Bridge Plug Set: MD 18665 TVD 7914		21. Type Electric & Other Mechanical Logs Run (Submit copy of each) NONE	
22. Was well cored? <input checked="" type="checkbox"/> No <input type="checkbox"/> Yes (Submit analysis) Was DST run? <input checked="" type="checkbox"/> No <input type="checkbox"/> Yes (Submit analysis) Directional Survey? <input type="checkbox"/> No <input checked="" type="checkbox"/> Yes (Submit analysis)			

## 23. Casing and Liner Record (Report all strings set in well)

Hole Size	Size/Grade	Wt. (#/ft.)	Top (MD)	Bottom (MD)	Stage Cementer Depth	No. of Sks. & Type of Cement	Slurry Vol. (BBL)	Cement Top*	Amount Pulled
17.500	13.375 J55	54.5	0	446		450		0	
12.250	9.625 J55	40.0	0	2381		935		0	
8.750	5.500 P110	17.0	0	18750		2895		1170	

## 24. Tubing Record

Size	Depth Set (MD)	Packer Depth (MD)	Size	Depth Set (MD)	Packer Depth (MD)	Size	Depth Set (MD)	Packer Depth (MD)
2.875	7238	7228						

## 25. Producing Intervals

Formation	Top	Bottom	Perforated Interval	Size	No. Holes	Perf. Status
A) BONE SPRING	8729	18640	8729 TO 18640	0.430	2816	OPEN
B)						
C)						
D)						

## 26. Perforation Record

## 27. Acid, Fracture, Treatment, Cement Squeeze, Etc.

Depth Interval	Amount and Type of Material
8729 TO 18640	SEE ATTACHED

## 28. Production - Interval A

Date First Produced	Test Date	Hours Tested	Test Production	Oil BBL	Gas MCF	Water BBL	Oil Gravity Corr. API	Gas Gravity	Production Method
11/09/2017	11/09/2017	24	→	41.0	0.0	1471.0			FLows FROM WELL
Choke Size	Tbg. Press. Flwg.	Csg. Press.	24 Hr. Rate	Oil BBL	Gas MCF	Water BBL	Gas:Oil Ratio	Well Status	
28/64	SI	600	→	41	0	1471		POW	

## 28a. Production - Interval B

Date First Produced	Test Date	Hours Tested	Test Production	Oil BBL	Gas MCF	Water BBL	Oil Gravity Corr. API	Gas Gravity	Production Method
			→						
Choke Size	Tbg. Press. Flwg.	Csg. Press.	24 Hr. Rate	Oil BBL	Gas MCF	Water BBL	Gas:Oil Ratio	Well ' Status	
	SI		→						

(See Instructions and spaces for additional data on reverse side)

ELECTRONIC SUBMISSION #396903 VERIFIED BY THE BLM WELL INFORMATION SYSTEM  
\*\* OPERATOR-SUBMITTED \*\* OPERATOR-SUBMITTED \*\* OPPending BLM approvals will  
subsequently be reviewed  
and scanned

AC 12-19-17

## 28b. Production - Interval C

Date First Produced	Test Date	Hours Tested	Test Production →	Oil BBL	Gas MCF	Water BBL	Oil Gravity Corr. API	Gas Gravity	Production Method
Choke Size	Tbg. Press. Flwg. SI	Csg. Press.	24 Hr. Rate →	Oil BBL	Gas MCF	Water BBL	Gas:Oil Ratio	Well Status	

## 28c. Production - Interval D

Date First Produced	Test Date	Hours Tested	Test Production →	Oil BBL	Gas MCF	Water BBL	Oil Gravity Corr. API	Gas Gravity	Production Method
Choke Size	Tbg. Press. Flwg. SI	Csg. Press.	24 Hr. Rate →	Oil BBL	Gas MCF	Water BBL	Gas:Oil Ratio	Well Status	

## 29. Disposition of Gas(Sold, used for fuel, vented, etc.)

SOLD

## 30. Summary of Porous Zones (Include Aquifers):

Show all important zones of porosity and contents thereof: Cored intervals and all drill-stem tests, including depth interval tested, cushion used, time tool open, flowing and shut-in pressures and recoveries.

## 31. Formation (Log) Markers

Formation	Top	Bottom	Descriptions, Contents, etc.	Name	Top
					Meas. Depth
LAMAR	2020	2059		LAMAR	2020
BELL CANYON	2060	2924		BELL CANYON	2060
CHERRY CANYON	2925	4027		CHERRY CANYON	2925
BRUSHY CANYON	4028	5598		BRUSHY CANYON	4028
BONE SPRING LM	5599	6542		BONE SPRING LM	5599
1ST BONE SPRING	6543	7333		1ST BONE SPRING	6543
2ND BONE SPRING	7334	7926		2ND BONE SPRING	7334

## 32. Additional remarks (include plugging procedure):

Surveys and Perfs/Stimulation are attached.

## 33. Circle enclosed attachments:

1. Electrical/Mechanical Logs (1 full set req'd.)
2. Geologic Report
3. DST Report
4. Directional Survey
5. Sundry Notice for plugging and cement verification
6. Core Analysis
7. Other:

## 34. I hereby certify that the foregoing and attached information is complete and correct as determined from all available records (see attached instructions):

Electronic Submission #396903 Verified by the BLM Well Information System.  
For COG OPERATING LLC, sent to the Carlsbad

Name (please print) STORMI DAVISTitle PREPARERSignature (Electronic Submission)Date 12/05/2017

Title 18 U.S.C. Section 1001 and Title 43 U.S.C. Section 1212, make it a crime for any person knowingly and willfully to make to any department or agency of the United States any false, fictitious or fraudulent statements or representations as to any matter within its jurisdiction.

**\*\* ORIGINAL \*\* ORIGINAL \*\* ORIGINAL \*\* ORIGINAL \*\* ORIGINAL \*\* ORIGINAL \*\* ORIGINAL \*\***



**CRAIG FEDERAL COM #12H (30-015-44208)**

<u>Perfs</u>	<u>15% Acid (Gal)</u>	<u>Sand (#)</u>	<u>Fluid (Gal)</u>
1	756	312983	355824
2	2394	311002	372876
3	2268	310331	365064
4	2268	314469	365358
5	2268	312777	363174
6	2268	311154	405090
7	2268	311461	368214
8	2352	313173	355908
9	2268	312028	355698
10	2268	313163	346584
11	2268	313535	354060
12	2226	312638	346332
13	2310	314847	356916
14	2268	312945	353346
15	2226	313926	343014
16	2268	313038	351330
17	2268	309195	344232
18	2268	313010	429912
19	2268	311046	343686
20	2268	311999	353052
21	2268	309495	334362
22	2268	262859	381276
23	2268	312115	349398
24	2268	312071	367164
25	2268	312586	339948
26	2268	313039	349692
27	2268	286902	335370
28	2268	312023	336924
29	2310	312066	347256
30	2268	313169	343560
31	2310	312192	336252
32	2310	310557	400260
33	2310	313194	325878
34	2268	312163	312554
35	2268	313477	348390
36	2268	312996	362502
37	2268	311759	329994
38	2268	312248	330330
39	2226	312855	345450
40	2268	312031	334782
41	2268	313305	370608
42	2268	312017	326214
43	2268	312045	326676
44	2310	312395	318318
45	2268	313066	341502
46	2268	312591	316260
47	2226	312706	334530
48	2268	312973	346038
49	2268	311800	298032
50	2268	314062	318234
51	2268	313200	310800
52	2310	314297	367290
53	2268	311080	319914
54	2310	312044	338310
55	2310	312680	337428
56	2268	312625	326466
57	2268	310566	320166
58	2268	312055	318360
59	2268	312031	336252
60	2268	307911	333984
61	3108	309599	317352
62	3108	311768	344274
63	2814	307026	328440
64	2814	302553	349776
<b>Totals</b>	<b>146,832</b>	<b>19,894,912</b>	<b>22,086,236</b>

From Bottom to Top	Stage 1	Distance Between Perfs	Shots	Stage 2	Distance Between Perfs	Shots	Stage 3	Distance Between Perfs	Shots	Stage 4	Distance Between Perfs	Shots	Stage 5	Distance Between Perfs	Shots
	18,640	19	6	18,459	45	6	18,328	21	6	18,175	19	6	18,019	25	6
	18,621	20	6	18,445	14	6	18,310	20	6	18,155	19	6	18,002	21	6
	18,601	19	6	18,431	14	6	18,290	19	6	18,136	24	6	17,981	17	6
	18,582	20	6	18,417	14	6	18,271	13	6	18,112	15	6	17,964	22	6
	18,563	19	5	18,403	14	5	18,258	20	5	18,097	23	5	17,942	20	5
	18,543	19	5	18,389	14	5	18,233	20	5	18,074	16	5	17,922	19	5
	18,524	20	5	18,375	26	5	18,213	19	5	18,058	14	5	17,903	19	5
	18,504		5	18,349		5	18,184		5	18,044		5	17,884		5
	Plug to Plug	-18,471	44	Plug to Plug	18,471	44	Plug to Plug	18,244	44	Plug to Plug	18,184	44	Plug to Plug	18,029	44
	Frac Plug		Total Shots		Total Shots	Total Shots		Total Shots	Total Shots		Total Shots	Total Shots		Total Shots	Total Shots

Stage 6	Distance Between Perfs	Shots	Stage 7	Distance Between Perfs	Shots	Stage 8	Distance Between Perfs	Shots	Stage 9	Distance Between Perfs	Shots	Stage 10	Distance Between Perfs	Shots
From Bottom to Top	17,855	29	17,706	22	6	17,554	19	6	17,397	21	6	17,244	19	6
	17,845	20	17,690	20	6	17,534	19	6	17,379	19	6	17,224	19	6
	17,825	19	17,670	19	6	17,515	19	6	17,360	19	6	17,205	20	6
	17,806	24	17,651	20	6	17,496	20	6	17,341	21	6	17,185	19	6
	17,782	15	17,631	19	5	17,476	19	5	17,320	18	5	17,166	19	5
	17,767	24	17,612	18	5	17,457	19	5	17,302	18	5	17,147	20	5
	17,743	15	17,593	20	5	17,438	20	5	17,284	21	5	17,127	19	5
	17,728	5	17,573	5	5	17,418	5	5	17,263	17,108	5	17,108	5	5
Plug to Plug	149	44	Plug to Plug	152	44	Plug to Plug	159	44	Plug to Plug	152	44	Plug to Plug	155	44
Frac Plug	17,666	Total Shots	17,716	Total Shots	Total Shots	17,664	Total Shots	Total Shots	17,605	Total Shots	Total Shots	17,553	Total Shots	Total Shots

Stage 11	Distance Between Perfs	Shots	Stage 12	Distance Between Perfs	Shots	Stage 13	Distance Between Perfs	Shots	Stage 14	Distance Between Perfs	Shots	Stage 15	Distance Between Perfs	Shots
From Bottom to Top	17,088	20	16,931	22	6	16,778	19	6	16,623	19	6	16,468	19	6
	17,069	19	16,914	20	6	16,759	20	6	16,604	20	6	16,448	23	6
	17,050	20	16,894	19	6	16,739	19	6	16,584	19	6	16,428	15	6
	17,031	19	16,870	21	6	16,720	19	6	16,565	20	6	16,410	17	6
	16,991	20	16,854	18	5	16,701	20	5	16,645	19	5	16,383	22	5
	16,972	19	16,838	20	5	16,681	19	5	16,626	19	5	16,371	17	5
	16,953	19	16,816	19	5	16,662	20	5	16,607	20	5	16,354	22	5
	16,933	5	16,797	5	5	16,642	5	5	16,487	16,332	5	16,332	22	5
Plug to Plug	160	44	Plug to Plug	150	44	Plug to Plug	155	44	Plug to Plug	158	44	Plug to Plug	153	44
Frac Plug	17,038	Total Shots	16,938	Total Shots	Total Shots	16,786	Total Shots	Total Shots	16,633	Total Shots	Total Shots	16,475	Total Shots	Total Shots

Stage 16	Distance Between Perfs	Shots	Stage 17	Distance Between Perfs	Shots	Stage 18	Distance Between Perfs	Shots	Stage 19	Distance Between Perfs	Shots	Stage 20	Distance Between Perfs	Shots
From Bottom to Top	16,313	19	16,157	22	6	16,002	20	6	15,847	20	6	15,692	19	6
	16,293	19	16,138	19	6	16,083	23	6	15,828	20	6	15,673	20	6
	16,274	20	16,119	20	6	16,060	16	6	15,808	19	6	15,653	19	6
	16,254	18	16,099	19	6	16,044	15	6	15,789	19	6	15,634	20	6
	16,235	23	16,080	20	5	16,029	24	5	15,770	21	5	15,614	19	5
	16,212	16	16,060	19	5	16,005	18	5	15,749	18	5	15,595	19	5
	16,196	17	16,041	19	5	15,987	20	5	15,731	20	5	15,576	20	5
	16,179	5	16,022	5	5	15,967	5	5	15,711	15,566	5	15,566	20	5
Plug to Plug	155	44	Plug to Plug	153	44	Plug to Plug	157	44	Plug to Plug	155	44	Plug to Plug	158	44
Frac Plug	16,822	Total Shots	16,187	Total Shots	Total Shots	16,014	Total Shots	Total Shots	15,857	Total Shots	Total Shots	15,702	Total Shots	Total Shots

Stage 21	Distance Between Perfs	Shots	Stage 22	Distance Between Perfs	Shots	Stage 23	Distance Between Perfs	Shots	Stage 24	Distance Between Perfs	Shots	Stage 25	Distance Between Perfs	Shots
From Bottom to Top	15,534	22	15,382	19	6	15,220	26	6	15,073	18	6	14,916	20	6
	15,517	15	15,368	15	6	15,207	19	6	15,052	19	6	14,897	20	6
	15,502	23	15,343	15	6	15,188	20	6	15,033	20	6	14,877	23	6
	15,479	20	15,328	24	6	15,168	19	6	15,013	19	6	14,854	18	6
	15,459	19	15,304	17	5	15,149	19	5	14,994	20	5	14,839	20	5
	15,440	20	15,287	22	5	15,130	22	5	14,974	19	5	14,819	19	5
	15,420	19	15,265	19	5	15,108	17	5	14,955	19	5	14,800	20	5
	15,401	5	15,246	5	5	15,091	5	5	14,936	14,780	5	14,780	20	5
Plug to Plug	155	44	Plug to Plug	163	44	Plug to Plug	147	44	Plug to Plug	155	44	Plug to Plug	162	44
Frac Plug	15,546	Total Shots	15,391	Total Shots	Total Shots	15,226	Total Shots	Total Shots	15,081	Total Shots	Total Shots	14,926	Total Shots	Total Shots

Stage 26	Distance Between Perfs	Shots	Stage 27	Distance Between Perfs	Shots	Stage 28	Distance Between Perfs	Shots	Stage 29	Distance Between Perfs	Shots	Stage 30	Distance Between Perfs	Shots
From Bottom to Top	14,754	26	14,601	24	6	14,451	17	6	14,296	29	6	14,126	34	6
	14,742	20	14,586	18	6	14,431	19	6	14,278	19	6	14,115	13	6
	14,722	19	14,568	20	6	14,412	20	6	14,257	20	6	14,102	20	6
	14,703	20	14,548	20	6	14,392	19	6	14,237	19	6	14,082	19	6
	14,683	19	14,528	19	5	14,373	19	5	14,218	19	5	14,063	20	5
	14,664	21	14,509	20	5	14,354	20	5	14,199	20	5	14,043	19	5
	14,643	18	14,489	21	5	14,334	19	5	14,179	19	5	14,024	19	5
	14,625	5	14,468	5	5	14,315	5	5	14,160	14,005	5	14,005	19	5
Plug to Plug	148	44	Plug to Plug	156	44	Plug to Plug	160	44	Plug to Plug	144	44	Plug to Plug	140	44
Frac Plug	14,764	Total Shots	14,616	Total Shots	Total Shots	14,460	Total Shots	Total Shots	14,300	Total Shots	Total Shots	14,136	Total Shots	Total Shots

Stage 31	Distance Between Perfs	Shots	Stage 32	Distance Between Perfs	Shots	Stage 33	Distance Between Perfs	Shots	Stage 34	Distance Between Perfs	Shots	Stage 35	Distance Between Perfs	Shots
From Bottom to Top	13,953	22	13,803	19	6	13,675	19	6	13,510	29	6	13,347	37	6
	13,966	16	13,811	20	6	13,662	26	6	13,500	19	6	13,340	12	6
	13,950	23	13,791	19	6	13,636	19	6	13,481	19	6	13,328	22	6
	13,927	17	13,772	20	6	13,617	20	6	13,462	20	6	13,306	19	6
	13,910	22	13,752	19	5	13,597	19	5	13,442	19	5	13,287	19	5
	13,888	19	13,733	19	5	13,573	19	5	13,423	20	5	13,268	20	5
	13,869	20	13,714	20	5	13,559	20	5	13,403	19	5	13,246	19	5
	13,849	5	13,694	5	5	13,539	5	5	13,384	13,229	5	13,229	19	5
Plug to Plug	158	44	Plug to Plug	180	44	Plug to Plug	140	44	Plug to Plug	148	44	Plug to Plug	159	44
Frac Plug	13,998	Total Shots	13,840	Total Shots	Total Shots	13,680	Total Shots	Total Shots	13,520	Total Shots	Total Shots	13,374	Total Shots	Total Shots

Stage 36	Distance Between Perfs	Shots	Stage 37	Distance Between Perfs	Shots	Stage 38	Distance Between Perfs	Shots	Stage 39	Distance Between Perfs	Shots	Stage 40	Distance Between Perfs	Shots
From Bottom to Top	13,207	22	13,050	23	6	12,899	19	6	12,728	35	6	12,586	19	6
	13,190	19	13,030	15	6	12,880	20	6	12,722	13	6	12,569	19	6
	13,171	20	13,015	19	6	12,860	19	6	12,709	23	6	12,550	19	6
	13,151	19	12,996	19	6	12,841	20	6	12,686	21	6	12,531	20	6
	13,132	20	12,977	20	5	12,822	19	5	12,665	18	5	12,511	19	5
	13,112	19	12,957	19	5	12,802	23	5	12,647	19	5	12,492	20	5
	13,093	20	12,938	20	5	12,779	16	5	12,628	20	5	12,472	19	5
	13,073	5	12,918	5	5	12,763	5	5	12,608	12,453	5	12,453	19	5
Plug to Plug	155	44	Plug to Plug	151	44	Plug to Plug	173	44	Plug to Plug	138	44	Plug to Plug	157	44
Frac Plug	13,215	Total Shots	13,060	Total Shots	Total Shots	12,909	Total Shots	Total Shots	12,735	Total Shots	Total Shots	12,588	Total Shots	Total Shots



	Distance Between Perfs	Shots	Stage 42	Distance Between Perfs	Shots	Stage 43	Distance Between Perfs	Shots	Stage 44	Distance Between Perfs	Shots	Stage 45	Distance Between Perfs	Shots
From Bottom to Top	12,434	19	12,273	41	6	12,118	25	6	11,968	20	6	11,813	24	6
	12,413	18	12,259	19	6	12,104	18	6	11,943	14	6	11,794	20	6
	12,395	25	12,240	20	6	12,086	21	6	11,926	19	6	11,774	19	6
	12,370	14	12,220	19	6	12,065	19	6	11,910	19	6	11,755	20	6
	12,356	18	12,201	20	5	12,046	20	5	11,891	22	5	11,735	19	5
	12,338	24	12,181	21	6	12,028	19	5	11,880	17	5	11,716	19	5
	12,314	5	12,160	17	5	12,007	19	5	11,862	15	5	11,697	20	5
			12,143		5	11,988		5	11,837		5	11,677		5
Plug to Plug	159	44	Plug to Plug	149	44	Plug to Plug	155	44	Plug to Plug	155	44	Plug to Plug	171	44
Frac Plug	12,441	Total Shots	Frac Plug	12,282	Total Shots	Frac Plug	12,133	Total Shots	Frac Plug	11,978	Total Shots	Frac Plug	11,823	Total Shots

	Distance Between Perfs	Shots	Stage 47	Distance Between Perfs	Shots	Stage 48	Distance Between Perfs	Shots	Stage 49	Distance Between Perfs	Shots	Stage 50	Distance Between Perfs	Shots
From Bottom to Top	11,642	35	11,503	19	6	11,347	27	6	11,184	28	6	11,028	28	6
	11,624	18	11,483	19	6	11,328	19	6	11,173	19	6	11,018	20	6
	11,604	16	11,463	20	6	11,308	20	6	11,154	20	6	10,998	19	6
	11,600	18	11,444	19	6	11,288	19	6	11,134	23	6	10,979	19	6
	11,582	21	11,425	19	5	11,270	19	5	11,111	16	5	10,960	20	5
	11,561	20	11,406	20	5	11,251	20	5	11,095	18	5	10,940	19	5
	11,541	19	11,386	12	5	11,231	19	5	11,077	20	5	10,921	20	5
	11,522	5	11,374		5	11,212		5	11,057		5	10,901		5
Plug to Plug	140	44	Plug to Plug	135	44	Plug to Plug	135	44	Plug to Plug	145	44	Plug to Plug	155	44
Frac Plug	11,652	Total Shots	Frac Plug	11,512	Total Shots	Frac Plug	11,357	Total Shots	Frac Plug	11,192	Total Shots	Frac Plug	11,047	Total Shots

	Distance Between Perfs	Shots	Stage 52	Distance Between Perfs	Shots	Stage 53	Distance Between Perfs	Shots	Stage 54	Distance Between Perfs	Shots	Stage 55	Distance Between Perfs	Shots
From Bottom to Top	10,882	19	10,723	23	6	10,572	19	6	10,417	19	6	10,258	25	6
	10,867	24	10,707	28	6	10,552	19	6	10,397	19	6	10,242	19	6
	10,843	19	10,679	26	6	10,533	20	6	10,378	20	6	10,233	20	6
	10,824	20	10,660	10	6	10,512	19	6	10,358	18	6	10,203	19	6
	10,804	19	10,643	13	5	10,494	19	5	10,339	18	5	10,184	20	5
	10,785	19	10,630	18	5	10,475	20	5	10,320	20	5	10,164	20	5
	10,766	20	10,612	21	5	10,455	19	5	10,300	19	5	10,144	18	5
	10,746	5	10,591		5	10,436		5	10,281		5	10,126		5
Plug to Plug	154	44	Plug to Plug	157	44	Plug to Plug	155	44	Plug to Plug	160	44	Plug to Plug	150	44
Frac Plug	10,892	Total Shots	Frac Plug	10,738	Total Shots	Frac Plug	10,581	Total Shots	Frac Plug	10,428	Total Shots	Frac Plug	10,286	Total Shots

	Distance Between Perfs	Shots	Stage 57	Distance Between Perfs	Shots	Stage 58	Distance Between Perfs	Shots	Stage 59	Distance Between Perfs	Shots	Stage 60	Distance Between Perfs	Shots
From Bottom to Top	10,101	25	9,951	19	6	9,792	23	6	9,637	23	6	9,480	19	6
	10,087	20	9,932	20	6	9,776	19	6	9,621	18	6	9,462	15	6
	10,067	19	9,912	19	6	9,757	20	6	9,603	20	6	9,447	17	6
	10,048	19	9,893	20	6	9,738	20	6	9,583	20	6	9,430	22	6
	10,029	20	9,873	19	5	9,718	19	5	9,563	19	5	9,408	19	5
	10,009	19	9,854	19	5	9,699	19	5	9,544	20	5	9,389	20	5
	9,990	20	9,835	20	5	9,680	20	5	9,524	19	5	9,369	19	5
	9,970	5	9,815		5	9,660		5	9,505		5	9,350		5
Plug to Plug	155	44	Plug to Plug	159	44	Plug to Plug	152	44	Plug to Plug	155	44	Plug to Plug	165	44
Frac Plug	10,118	Total Shots	Frac Plug	9,961	Total Shots	Frac Plug	9,802	Total Shots	Frac Plug	9,650	Total Shots	Frac Plug	9,495	Total Shots

	Distance Between Perfs	Shots	Stage 61	Distance Between Perfs	Shots	Stage 62	Distance Between Perfs	Shots	Stage 63	Distance Between Perfs	Shots	Stage 64	Distance Between Perfs	Shots
From Bottom to Top	9,320	30	9,150	45	6	9,000	19	6	8,855	27	6		8,720	6
	9,311	19	9,140	15	6	9,000	19	6	8,946	20	6			6
	9,292	20	9,125	8	6	8,981	19	6	8,920	16	6			6
	9,272	22	9,117	19	6	8,962	20	6	8,910	23	6			6
	9,250	17	9,098	20	5	8,942	24	5	8,787	19	5			5
	9,233	13	9,078	19	5	8,918	14	5	8,768	19	5			5
	9,220	25	9,059	20	5	8,904	12	5	8,749	20	5			5
	9,195	5	9,039		5	8,892		5	8,729		5			5
Plug to Plug	170	44	Plug to Plug	130	44	Plug to Plug	155	44	Plug to Plug	65	44	Plug to Plug	0	44
Frac Plug	9,330	Total Shots	Frac Plug	9,160	Total Shots	Frac Plug	9,030	Total Shots	Frac Plug	8,875	Total Shots	Frac Plug		Total Shots



District I  
1625 N. French Dr., Hobbs, NM 88240  
District II  
811 S. First St., Artesia, NM 88210  
District III  
1000 Rio Brazos Rd., Aztec, NM 87410  
District IV  
1220 S. St. Francis Dr., Santa Fe, NM 87505

State of New Mexico  
Energy, Minerals & Natural Resources

Form C-104  
Revised August 1, 2011

Oil Conservation Division  
1220 South St. Francis Dr.  
Santa Fe, NM 87505

Submit one copy to appropriate District Office

☐ AMENDED REPORT

I. REQUEST FOR ALLOWABLE AND AUTHORIZATION TO TRANSPORT

<sup>1</sup> Operator name and Address COG Operating LLC 2208 W. Main Street Artesia, NM 88210		<sup>2</sup> OGRID Number 229137
		<sup>3</sup> Reason for Filing Code/ Effective Date NW
<sup>4</sup> API Number 30 - 015-44208	<sup>5</sup> Pool Name WC-015 G-03 S252636M; Bone Spring	<sup>6</sup> Pool Code 97818
<sup>7</sup> Property Code 317787	<sup>8</sup> Property Name Craig Federal Com	<sup>9</sup> Well Number 12H

II. <sup>10</sup> Surface Location

Ul or lot no. D	Section 1	Township 26S	Range 26E	Lot Idn	Feet from the 675	North/South Line North	Feet from the 790	East/West line West	County Eddy
--------------------	--------------	-----------------	--------------	---------	----------------------	---------------------------	----------------------	------------------------	----------------

<sup>11</sup> Bottom Hole Location

Ul or lot no. D	Section 25	Township 25S	Range 26E	Lot Idn	Feet from the 210	North/South Line North	Feet from the 329	East/West line West	County Eddy
<sup>12</sup> Lse Code F	<sup>13</sup> Producing Method Code F	<sup>14</sup> Gas Connection Date 11/11/17	<sup>15</sup> C-129 Permit Number	<sup>16</sup> C-129 Effective Date	<sup>17</sup> C-129 Expiration Date				

III. Oil and Gas Transporters

<sup>18</sup> Transporter OGRID	<sup>19</sup> Transporter Name and Address	<sup>20</sup> O/G/W
278421	Holly Refining & Marketing Company, LLC PO Box 159 Artesia, NM 88210	O
	Lucid Energy	G
	NM OIL CONSERVATION ARTESIA DISTRICT DEC 07 2017 RECEIVED	

IV. Well Completion Data

<sup>21</sup> Spud Date 7/23/17	<sup>22</sup> Ready Date 11/8/17	<sup>23</sup> TD 18767' / 17918	<sup>24</sup> PBSD 18665'	<sup>25</sup> Perforations 8729-18640'	<sup>26</sup> DHC, MC
<sup>27</sup> Hole Size	<sup>28</sup> Casing & Tubing Size	<sup>29</sup> Depth Set	<sup>30</sup> Sacks Cement		
17 1/2"	13 3/8"	446'	450		
12 1/4"	9 5/8"	2381'	935		
8 3/4"	5 1/2"	18750'	2895		
	2 7/8"	7238'			

V. Well Test Data

<sup>31</sup> Date New Oil 11/9/17	<sup>32</sup> Gas Delivery Date 11/11/17	<sup>33</sup> Test Date 11/9/17	<sup>34</sup> Test Length 24 Hrs	<sup>35</sup> Tbg. Pressure 600#	<sup>36</sup> Csg. Pressure 400#
<sup>37</sup> Choke Size 28/64"	<sup>38</sup> Oil 41	<sup>39</sup> Water 1471	<sup>40</sup> Gas 0	<sup>41</sup> Test Method Flowing	

<sup>42</sup> I hereby certify that the rules of the Oil Conservation Division have been complied with and that the information given above is true and complete to the best of my knowledge and belief.

Signature: 

Printed name:  
Stormi Davis

Title:  
Regulatory Analyst

E-mail Address:  
sdavis@concho.com

Date:  
12/5/17

Phone:  
575-748-6946

OIL CONSERVATION DIVISION

Approved by: 

Title:  
Geologist.

Approval Date:  
12-18-2017

Pending BLM approvals will subsequently be reviewed and scanned

# NM OIL CONSERVATION

DISTRICT I  
1625 N. FRENCH DR., HOBBES, NM 88240  
Phone: (505) 393-6181 Fax: (505) 393-0720

DISTRICT II  
811 S. FIRST ST., ARTESIA, NM 88210  
Phone: (505) 746-1263 Fax: (505) 746-9720

DISTRICT III  
1000 RIO BRAZOS RD., AZTEC, NM 87410  
Phone: (505) 334-6178 Fax: (505) 334-6170

DISTRICT IV  
1220 S. ST. FRANCIS DR., SANTA FE, NM 87505  
Phone: (505) 476-3460 Fax: (505) 476-3462

State of New Mexico  
Energy, Minerals & Natural Resources Department  
OIL CONSERVATION DIVISION  
1220 SOUTH ST. FRANCIS DR.  
Santa Fe, New Mexico 87505  
RECEIVED

ARTESIA DISTRICT

DEC 04 2011

Form C-102  
Revised August 1, 2011  
Submit one copy to appropriate  
District Office

☐ AMENDED REPORT

## WELL LOCATION AND ACREAGE DEDICATION PLAT

API Number <b>30-015-44208</b>	Pool Code <b>97818</b>	Pool Name <b>WC-015 G-03 S252636M; Bone Spring</b>
Property Code <b>317787</b>	Property Name <b>CRAIG FEDERAL COM</b>	Well Number <b>12H</b>
OGRID No. <b>229137</b>	Operator Name <b>COG OPERATING, LLC</b>	Elevation <b>3370.1'</b>

### Surface Location

UL or lot No.	Section	Township	Range	Lot Idn	Feet from the	North/South line	Feet from the	East/West line	County
D	1	26-S	26-E		675	NORTH	790	WEST	EDDY

### Bottom Hole Location If Different From Surface

UL or lot No.	Section	Township	Range	Lot Idn	Feet from the	North/South line	Feet from the	East/West line	County
D	25	25-S	26-E		210	NORTH	329	WEST	EDDY

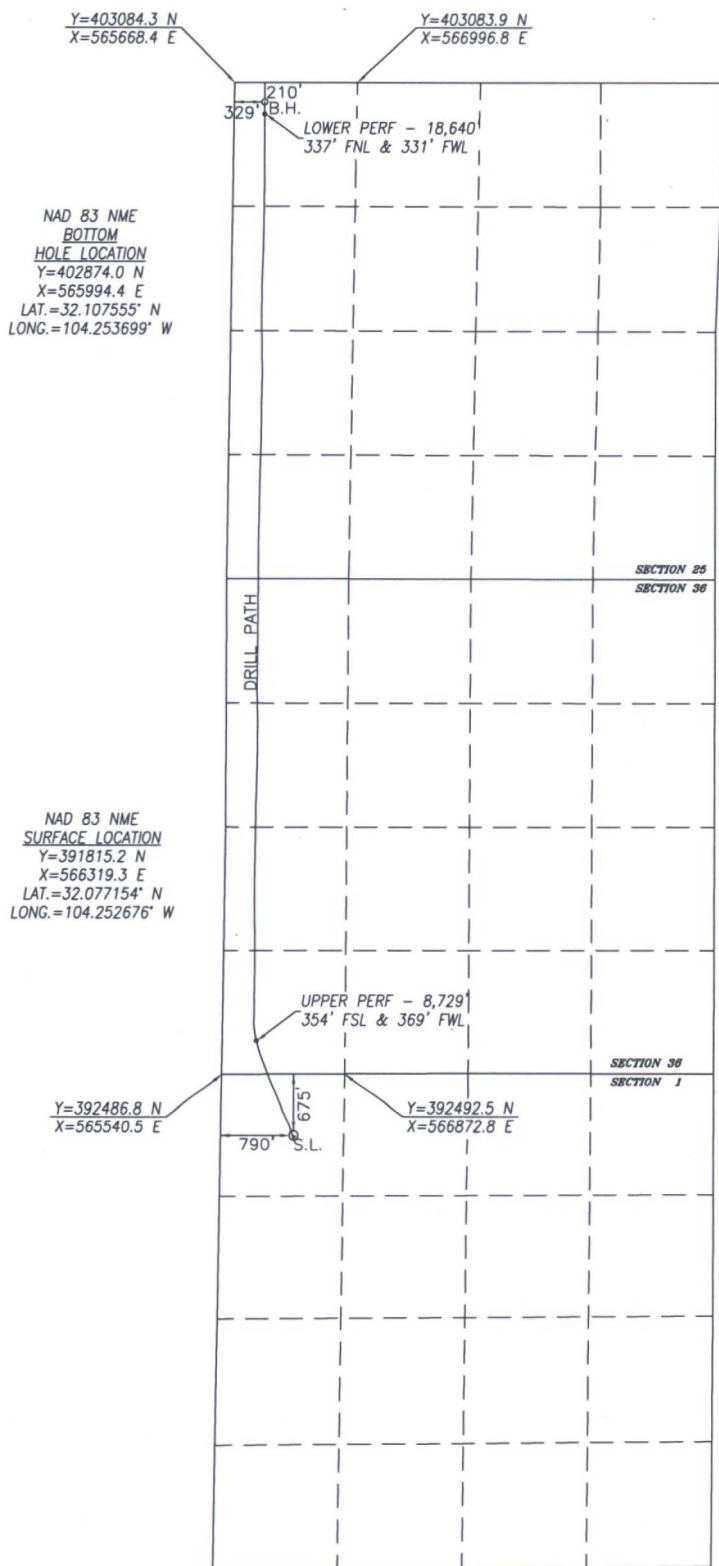
Dedicated Acres	Joint or Infill	Consolidation Code	Order No.
<b>320</b>			

NO ALLOWABLE WILL BE ASSIGNED TO THIS COMPLETION UNTIL ALL INTERESTS HAVE BEEN CONSOLIDATED  
OR A NON-STANDARD UNIT HAS BEEN APPROVED BY THE DIVISION

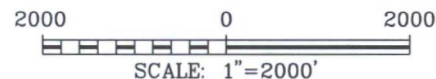
SEE PAGE 2



Property Code <b>317787</b>	Property Name <b>CRAIG FEDERAL COM</b>	Well Number <b>12H</b>
OGRID No. <b>229137</b>	Operator Name <b>COG OPERATING, LLC</b>	Elevation <b>3370.1'</b>



BOREPATH SHOWN HEREON IS BASED ON  
DIRECTIONAL SURVEY REPORT PROVIDED BY  
COG OPERATING, LLC FOR THE CRAIG FEDERAL  
COM #12H SUPPLIED TO HARCROW SURVEYING,  
LLC ON NOVEMBER 16, 2017



#### OPERATOR CERTIFICATION

I hereby certify that the information herein is true and complete to the best of my knowledge and belief, and that this organization either owns a working interest or unleased mineral interest in the land including the proposed bottom hole location or has a right to drill this well at this location pursuant to a contract with an owner of such mineral or working interest, or to a voluntary pooling agreement or a compulsory pooling order heretofore entered by the division.

*Stormi Davis* 11/29/17  
Signature Date

Stormi Davis

Printed Name

sdavis@concho.com

E-mail Address

#### SURVEYOR CERTIFICATION

I hereby certify that the well location shown on this plat was plotted from field notes of actual surveys made by me or under my supervision, and that the same is true and correct to the best of my belief.

NOV. 11, 2016/AUG. 11, 2017

Date of Survey/Date of Geographic Survey

Signature & Seal of Professional Surveyor



*Chad Harcrow* 11/28/17  
Certificate No. CHAD HARCROW 17777