

DISTRICT I
1625 N. French Dr., Hobbs, NM 88240
Phone: (505) 393-6161 Fax: (505) 393-0720

DISTRICT II
811 S. First St., Artesia, NM 88210
Phone: (505) 748-1283 Fax: (505) 748-9720

DISTRICT III
1000 Rio Brazos Road, Aztec, NM 87410
Phone: (505) 334-6178 Fax: (505) 334-6170

DISTRICT IV
1220 S. St. Francis Dr., Santa Fe, NM 87505
Phone: (505) 476-3460 Fax: (505) 476-3462

State of New Mexico
Energy, Minerals & Natural Resources Department
OIL CONSERVATION DIVISION
1220 South St. Francis Dr.
Santa Fe, New Mexico 87505

Form C-102
Revised August 1, 2011
Submit one copy to appropriate District Office

DEC 12 2017

AMENDED REPORT

WELL LOCATION AND ACREAGE DEDICATION PLAN

API Number 30-005-64306	Pool Code 50670	Pool Name Race Track; SAN Andres
Property Code 320479	Property Name CALAIS 30	Well Number 1
OGRID No. 26307	Operator Name JALAPENO CORPORATION	Elevation 3733'

Surface Location

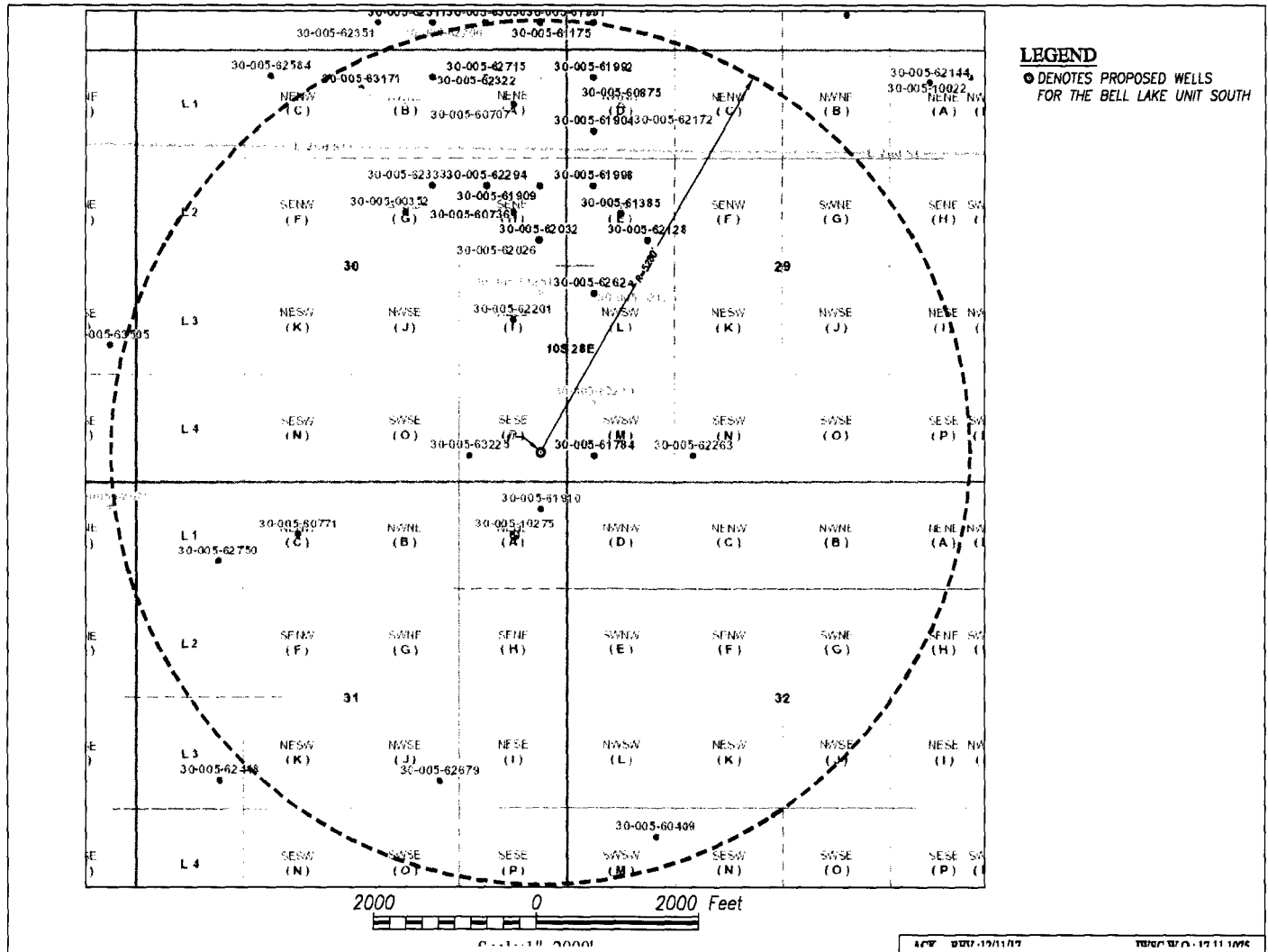
UL or lot No.	Section	Township	Range	Lot Idn	Feet from the	North/South line	Feet from the	East/West line	County
P	30	10-S	28-E		380	SOUTH	330	EAST	CHAVES

Bottom Hole Location If Different From Surface

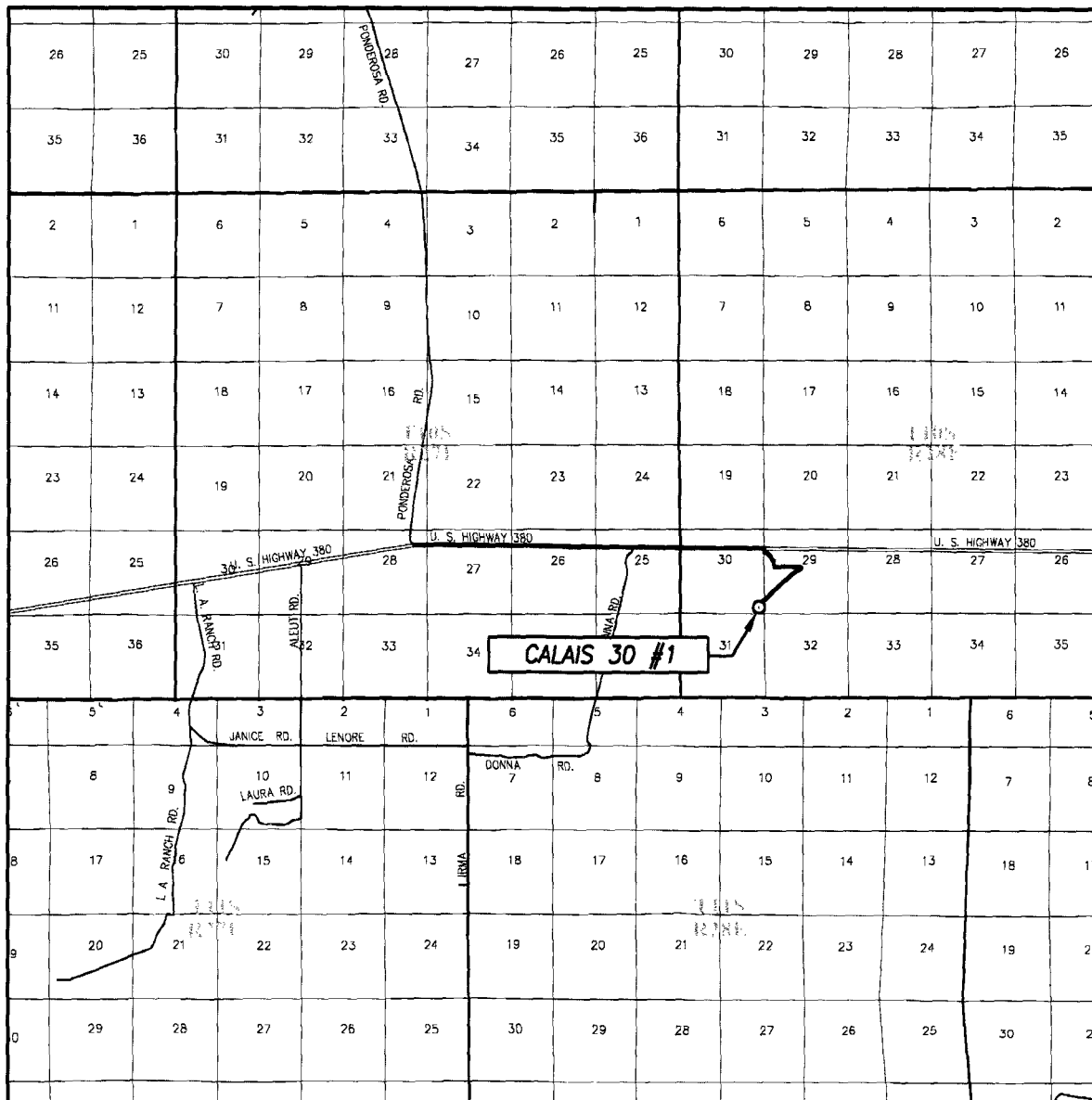
UL or lot No.	Section	Township	Range	Lot Idn	Feet from the	North/South line	Feet from the	East/West line	County

Dedicated Acres	Joint or Infill	Consolidation Code	Order No.

NO ALLOWABLE WILL BE ASSIGNED TO THIS COMPLETION UNTIL ALL INTERESTS HAVE BEEN CONSOLIDATED OR A NON-STANDARD UNIT HAS BEEN APPROVED BY THE DIVISION

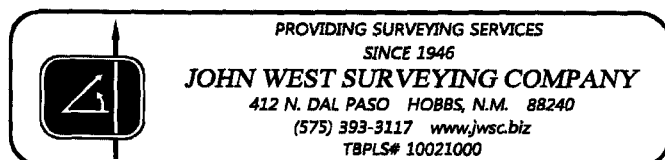


RECEIVED



DRIVING ROUTE: SEE TOPOGRAPHICAL AND ACCESS ROAD MAP

CHAVESSE CALAIS 30

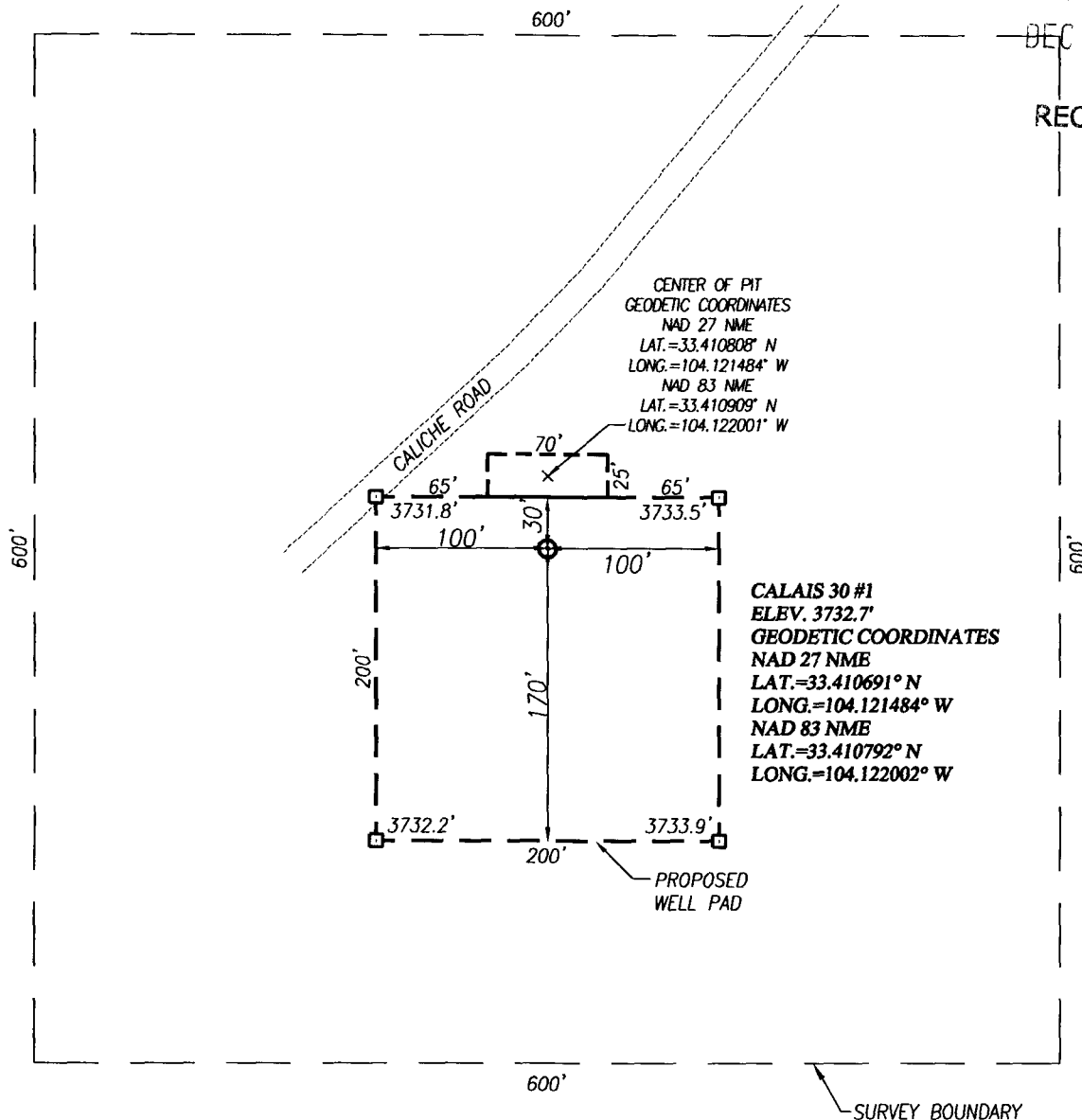


WELL SITE PLAN

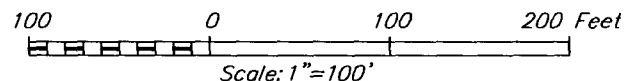
NM OIL CONSERVATION
ARTESIA DISTRICT

DEC 12 2017

RECEIVED



NOTE:
SEE "TOPOGRAPHICAL AND ACCESS ROAD MAP"
FOR PROPOSED ROAD LOCATION.



DIRECTIONS TO LOCATION:

FROM THE INTERSECTION OF U.S. HWY. 380 AND PONDEROSA,
GO EAST ON U.S. HWY. 380 APPROX. 4.2 MILES. TURN RIGHT
AND GO SOUTH ON CALICHE ROAD 1.3 MILES TO THIS LOCATION.



PROVIDING SURVEYING SERVICES
SINCE 1946
JOHN WEST SURVEYING COMPANY
412 N. DAL PASO HOBBS, N.M. 88240
(575) 393-3117 www.jwsc.biz
TBPLS# 10021000

JALAPENO CORPORATION

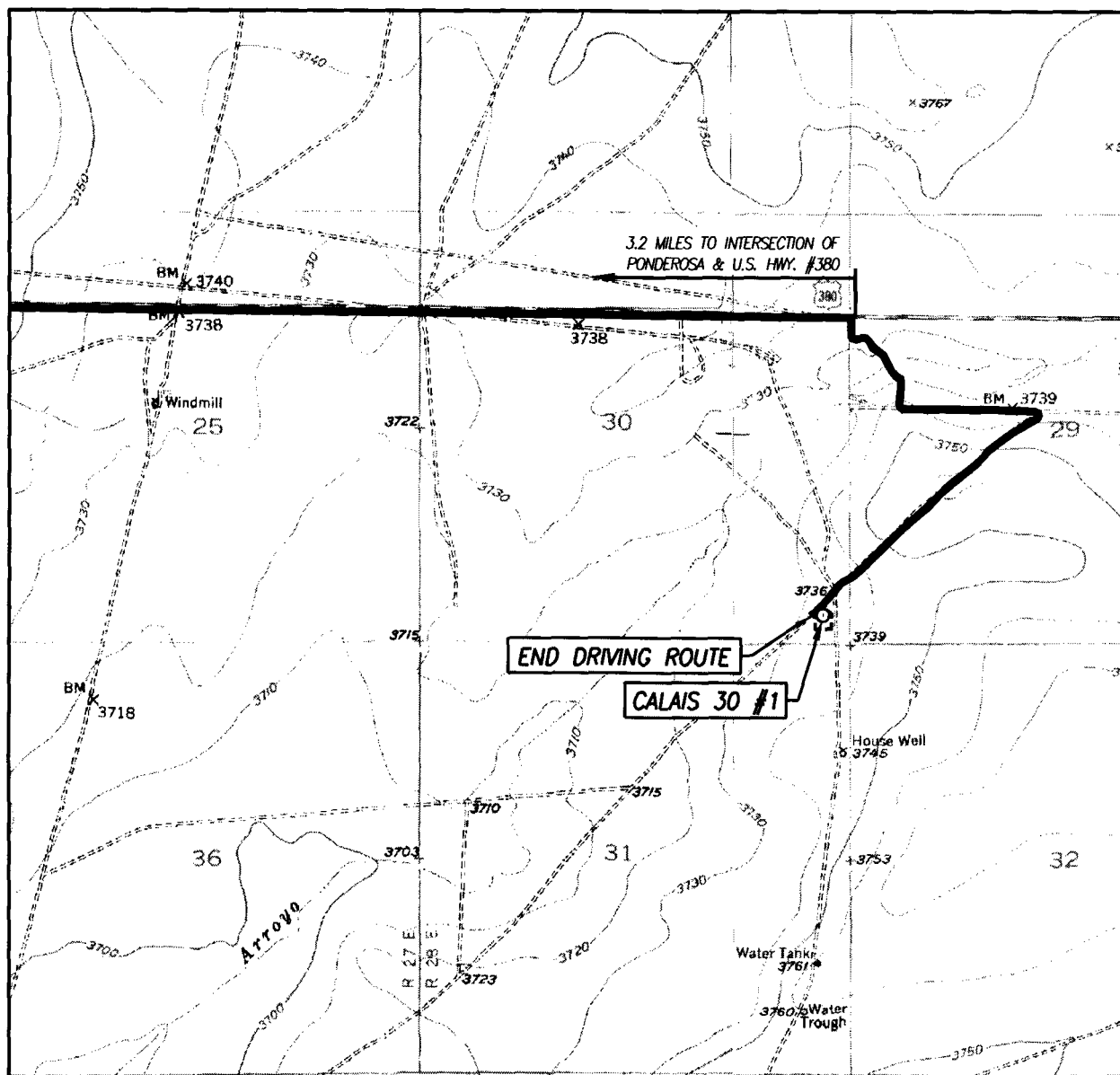
**CALAIS 30 #1 WELL LOCATED 380 FEET FROM THE SOUTH
LINE AND 330 FEET FROM THE EAST LINE OF SECTION 30,
TOWNSHIP 10 SOUTH, RANGE 28 EAST, N.M.P.M.,
CHAVES COUNTY, NEW MEXICO**

Survey Date: 11/16/17	CAD Date: 12/07/17	Drawn By: ACK
W.O. No.: 17111075	Rev: 12/11/17	Rel. W.O.:
		Sheet 1 of 1

DEC 12 2017

TOPOGRAPHIC AND ACCESS ROAD MAP

RECEIVED



SCALE: 1" = 2000'

CONTOUR INTERVAL:
L-E RANCH, N.M. - 10'
SARDINE MOUNTAIN, N.M. - 10'

SEC. 30 TWP. 10-S RGE. 28-E

SURVEY N.M.P.M.

COUNTY CHAVES STATE NEW MEXICO

DESCRIPTION 380' FSL & 330' FEL

ELEVATION 3733'

OPERATOR JALAPENO CORPORATION

CHAVESSE CALAIS 30

U.S.G.S. TOPOGRAPHIC MAP

SARDINE MOUNTAIN, N.M.

DIRECTIONS TO LOCATION:

FROM THE INTERSECTION OF U.S. HWY. 380 AND PONDEROSA,
GO EAST ON U.S. HWY. 380 APPROX. 4.2 MILES. TURN RIGHT
AND GO SOUTH ON CALICHE ROAD 1.3 MILES TO THIS LOCATION.



PROVIDING SURVEYING SERVICES
SINCE 1946

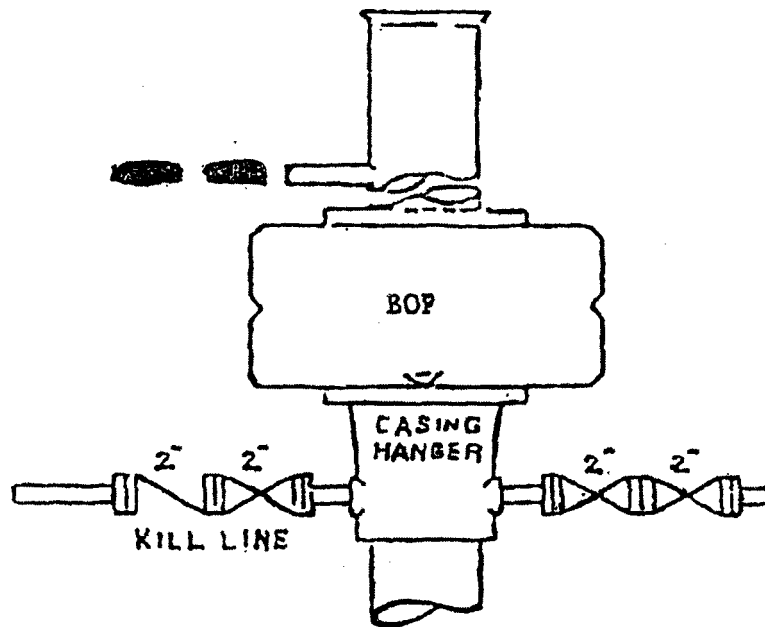
JOHN WEST SURVEYING COMPANY

412 N. DAL PASO HOBBS, N.M. 88240

(575) 393-3117 www.jwsc.biz

TBPLS# 10021000

JALAPENO CORPORATION
P-S30-T10S-R28E
CALAIS 30 #1



ANNULAR BOP STACK

PRESSURE 2000#