

Submit 3 Copies To Appropriate District Office  
District I  
1625 N. French Dr., Hobbs, NM 88240  
District II  
1301 W. Grand Ave., Artesia, NM 88210  
District III  
1000 Rio Brazos Rd., Aztec, NM 87410  
District IV  
1220 S. St. Francis Dr., Santa Fe, NM 87505

State of New Mexico  
Energy, Minerals and Natural Resources

Form C-103  
May 27, 2004

OIL CONSERVATION DIVISION  
1220 South St. Francis Dr.  
Santa Fe, NM 87505

WELL API NO. 30-015-34691
5. Indicate Type of Lease STATE <input checked="" type="checkbox"/> FEE <input type="checkbox"/>
6. State Oil & Gas Lease No. OG-181
7. Lease Name or Unit Agreement Name Mimosa State
8. Well Number 4
9. OGRID Number 013837
10. Pool name or Wildcat Empire; Yeso

SUNDRY NOTICES AND REPORTS ON WELLS (DO NOT USE THIS FORM FOR PROPOSALS TO DRILL OR TO DEEPEN OR PLUG BACK TO A DIFFERENT RESERVOIR. USE "APPLICATION FOR PERMIT" (FORM C-101) FOR SUCH PROPOSALS.)	
1. Type of Well: Oil Well <input checked="" type="checkbox"/> Gas Well <input type="checkbox"/> Other <input type="checkbox"/>	
2. Name of Operator Mack Energy Corporation	
3. Address of Operator P. O. Box 960 Artesia, NM 88211-0960	
4. Well Location Unit Letter <u>K</u> <u>1403</u> feet from the <u>South</u> line and <u>1103</u> feet from the <u>West</u> line Section <u>30</u> Township <u>17S</u> Range <u>29E</u> NMPM County <u>Eddy</u>	
11. Elevation (Show whether DR, RKB, RT, GR, etc.) 3655' GR	
Pit or Below-grade Tank Application <input type="checkbox"/> or Closure <input type="checkbox"/>	
Pit type _____ Depth Groundwater _____ Distance from nearest fresh water well _____ Distance from nearest surface water _____	
Pit Liner Thickness: _____ mil Below-Grade Tank: Volume _____ bbls; Construction Material _____	

12. Check Appropriate Box to Indicate Nature of Notice, Report or Other Data

NOTICE OF INTENTION TO:

PERFORM REMEDIAL WORK ☐ PLUG AND ABANDON ☐  
TEMPORARILY ABANDON ☐ CHANGE PLANS ☐  
PULL OR ALTER CASING ☐ MULTIPLE COMPL ☐

OTHER: Move Location ☒

SUBSEQUENT REPORT OF:

REMEDIAL WORK ☐ ALTERING CASING ☐  
COMMENCE DRILLING OPNS. ☐ P AND A ☐  
CASING/CEMENT JOB ☐

OTHER: \_\_\_\_\_ ☐

13. Describe proposed or completed operations. (Clearly state all pertinent details, and give pertinent dates, including estimated date of starting any proposed work). SEE RULE 1103. For Multiple Completions: Attach wellbore diagram of proposed completion or recompletion.

Mack Energy Corporation is proposing to change the footages for the Mimosa State #4 from 1650 FSL & 1263 FWL to 1403 FSL & 1103 FWL. These changes were made do to a buried gas line.

Note: this well will be directionally drilled to an orthodox location of 1650 FSL & 1262 FWL, Sec. 30 T17S R29E.

I hereby certify that the information above is true and complete to the best of my knowledge and belief. I further certify that any pit or below-grade tank has been/will be constructed or closed according to NMOCD guidelines ☐ a general permit ☐ or an (attached) alternative OCD-approved plan ☐

SIGNATURE Jerry W. Sherrell TITLE Production Clerk DATE 3/28/2006

Type or print name Jerry W. Sherrell E-mail jerry.sherrell@mackenergycorp.com Telephone No. (505)748-1288

For State Use Only District II Supervisor

APPROVED BY: \_\_\_\_\_ TITLE \_\_\_\_\_ DATE MAR 29 2006

Conditions of Approval (if any):

## State of New Mexico

## DISTRICT I

1625 N. FRENCH DR., HOBBS, NM 88240

Energy, Minerals and Natural Resources Department

## DISTRICT II

1301 W. GRAND AVENUE, ARTESIA, NM 88210

## DISTRICT III

1000 Rio Brazos Rd., Aztec, NM 87410

## DISTRICT IV

1220 S. ST. FRANCIS DR., SANTA FE, NM 87505

## OIL CONSERVATION DIVISION

1220 SOUTH ST. FRANCIS DR.

Santa Fe, New Mexico 87505

Form C-102

Revised October 12, 2005

Submit to Appropriate District Office

State Lease - 4 Copies

Fee Lease - 3 Copies

## WELL LOCATION AND ACREAGE DEDICATION PLAT

☐ AMENDED REPORT

API Number 30-015-34691	Pool Code 96210	Pool Name Empire;Yeso
Property Code 24229	Property Name MIMOSA STATE	Well Number 4
OGRID No. 013837	Operator Name MACK ENERGY CORPORATION	Elevation 3655'

## Surface Location

UL or lot No.	Section	Township	Range	Lot Idn	Feet from the	North/South line	Feet from the	East/West line	County
K	30	17-S	29-E		1403	SOUTH	1103	WEST	EDDY

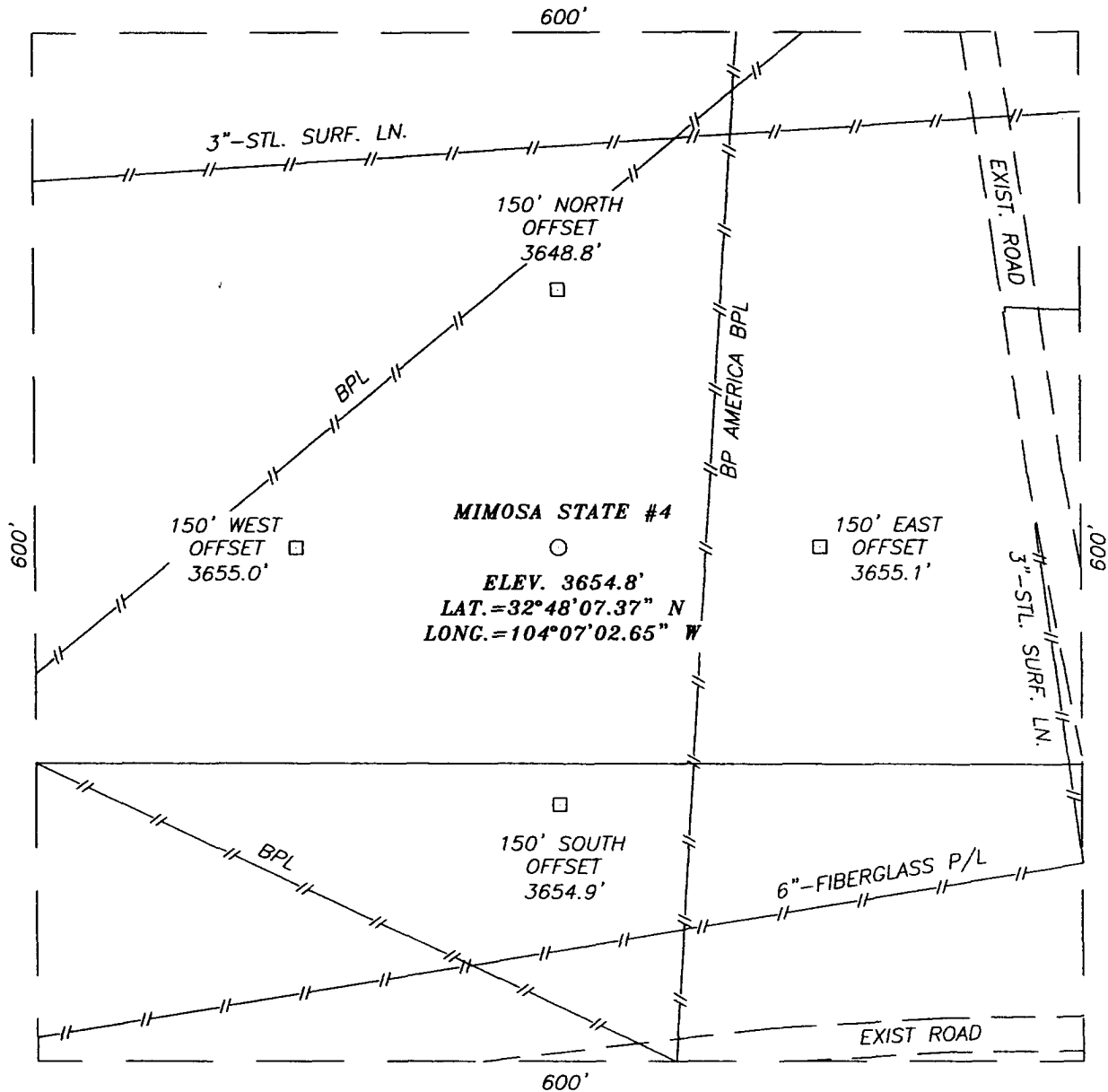
## Bottom Hole Location If Different From Surface

UL or lot No.	Section	Township	Range	Lot Idn	Feet from the	North/South line	Feet from the	East/West line	County
K	30	17-S	29-E		1650	SOUTH	1262	WEST	EDDY
Dedicated Acres 40	Joint or Infill	Consolidation Code	Order No.						

NO ALLOWABLE WILL BE ASSIGNED TO THIS COMPLETION UNTIL ALL INTERESTS HAVE BEEN CONSOLIDATED  
OR A NON-STANDARD UNIT HAS BEEN APPROVED BY THE DIVISION

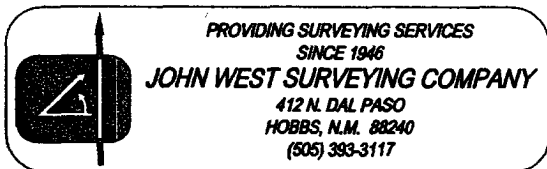
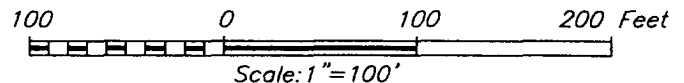
<p>LOT 1</p> <p>27.71 AC</p> <p>LOT 2</p> <p>27.94 AC</p> <p>LOT 3</p> <p>28.17 AC</p> <p>LOT 4</p> <p>28.40 AC</p> <p>GEODETIC COORDINATES NAD 27 NME SURFACE LOCATION Y=655564.0 N X=566348.5 E</p> <p>LAT.=32°48'07.37" N LONG.=104°07'02.65" W</p> <p>BOTTOM HOLE LOCATION Y=655811.3 N X=566507.8 E</p> <p>1262'</p> <p>330'</p> <p>B.H.</p> <p>1103'</p> <p>SURF.</p> <p>170'</p> <p>1403'</p> <p>1650'</p> <p>GR.AZ.=32°48'23" HD=294'</p> <p>RECEIVED MAR 29 2006 JCU-ARTESIA</p>	<p><b>OPERATOR CERTIFICATION</b></p> <p>I hereby certify that the information herein is true and complete to the best of my knowledge and belief, and that this organization either owns a working interest or unleased mineral interest in the land including the proposed bottom hole location or has a right to drill this well at this location pursuant to a contract with an owner of such mineral or working interest, or to a voluntary pooling agreement or a compulsory pooling order heretofore entered by the division.</p> <p><i>Jerry W. Sherrell</i> 3/27/06 Signature Date Jerry W. Sherrell Printed Name</p> <p><b>SURVEYOR CERTIFICATION</b></p> <p>I hereby certify that the well location shown on this plat was plotted from field notes of actual surveys made by me or under my supervision, and that the same is true and correct to the best of my belief.</p> <p>MARCH 16, 2006</p> <p>Date Surveyed JR</p> <p>Signature &amp; Seal of Professional Surveyor <i>GARY EIDSON</i> 3/27/06 06.11.0499</p> <p>Certificate No. GARY EIDSON 12641</p>
-----------------------------------------------------------------------------------------------------------------------------------------------------------------------------------------------------------------------------------------------------------------------------------------------------------------------------------------------------------------------------------------------------------------------------------------------------------------------------------------------------------------------------------	-----------------------------------------------------------------------------------------------------------------------------------------------------------------------------------------------------------------------------------------------------------------------------------------------------------------------------------------------------------------------------------------------------------------------------------------------------------------------------------------------------------------------------------------------------------------------------------------------------------------------------------------------------------------------------------------------------------------------------------------------------------------------------------------------------------------------------------------------------------------------------------------------------------------------------------------------------------------------------------------------------------------------------------------------------------------------------------------------

**SECTION 30, TOWNSHIP 17 SOUTH, RANGE 29 EAST, N.M.P.M.,**  
 EDDY COUNTY, NEW MEXICO



**DIRECTIONS TO LOCATION**

FROM THE INTERSECTION OF U.S. HWY. #82 AND  
 CO. RD. #211 (OLD LOCO RD.), GO WEST ON U.S.  
 HWY. #82 FOR APPROX. 1.3 MILES. TURN LEFT  
 AND GO SOUTH APPROX. 0.41 MILES. TURN LEFT  
 AND GO EAST APPROX. 0.1 MILES. THIS LOCATION  
 IS APPROX. 300 FEET NORTH.

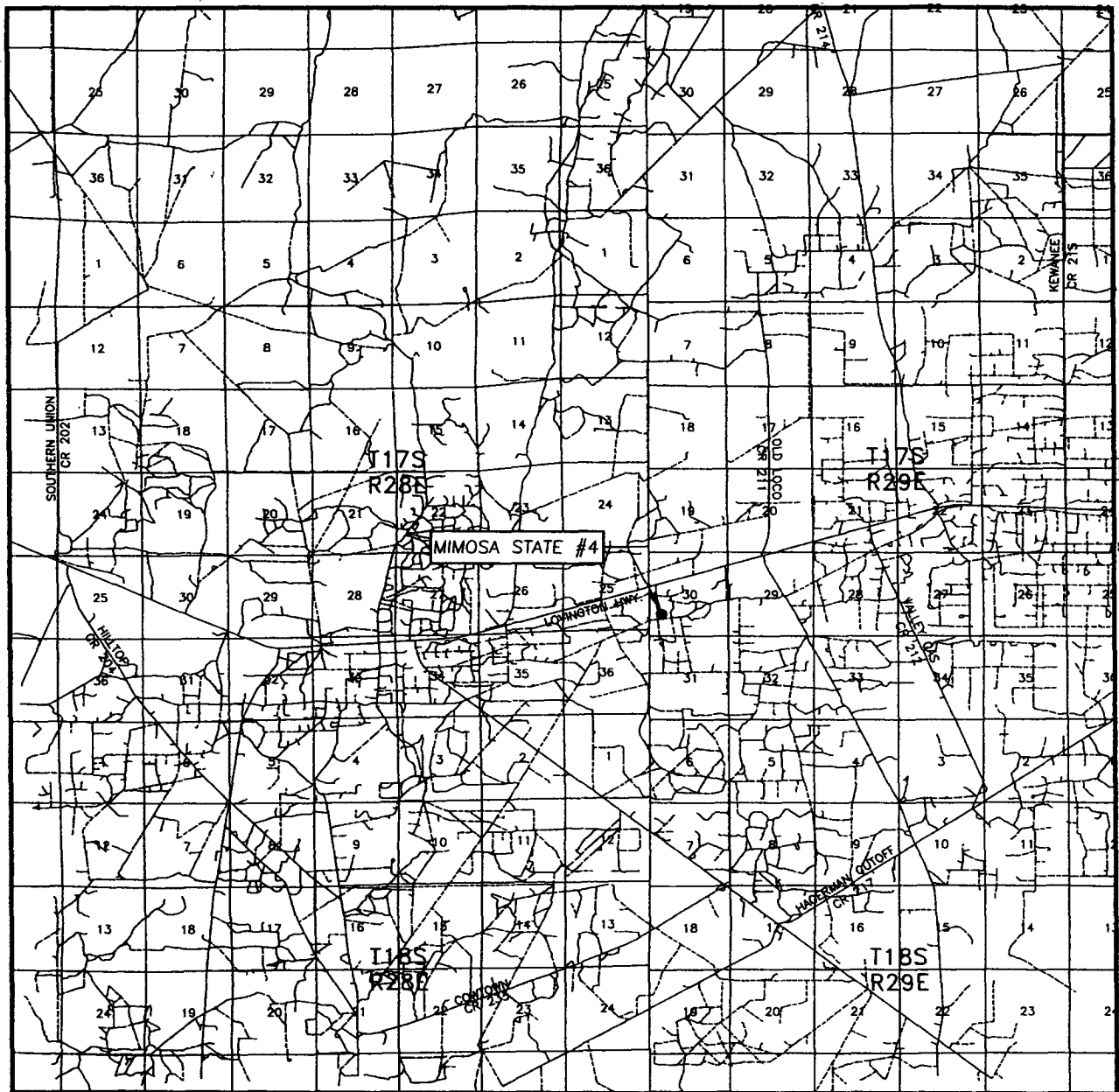


**MACK ENERGY CORPORATION**

MIMOSA STATE #4  
 LOCATED 1403 FEET FROM THE SOUTH LINE  
 AND 1103 FEET FROM THE WEST LINE OF SECTION 30,  
 TOWNSHIP 17 SOUTH, RANGE 29 EAST, N.M.P.M.,  
 EDDY COUNTY, NEW MEXICO.

Survey Date: 3/16/06	Sheet 1 of 1 Sheets
W.O. Number: 06.11.0492	Dr By: J.R.
Date: 3/21/06	Rev 1: N/A
Disk: CD#6	06110492
Scale: 1"=100'	

# VICINITY MAP



SCALE: 1" = 2 MILES

SEC. 30 TWP. 17-S RGE. 29-E

SURVEY N.M.P.M.

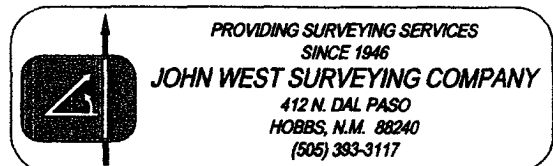
COUNTY EDDY STATE NEW MEXICO

DESCRIPTION 1403' FSL & 1103' FWL

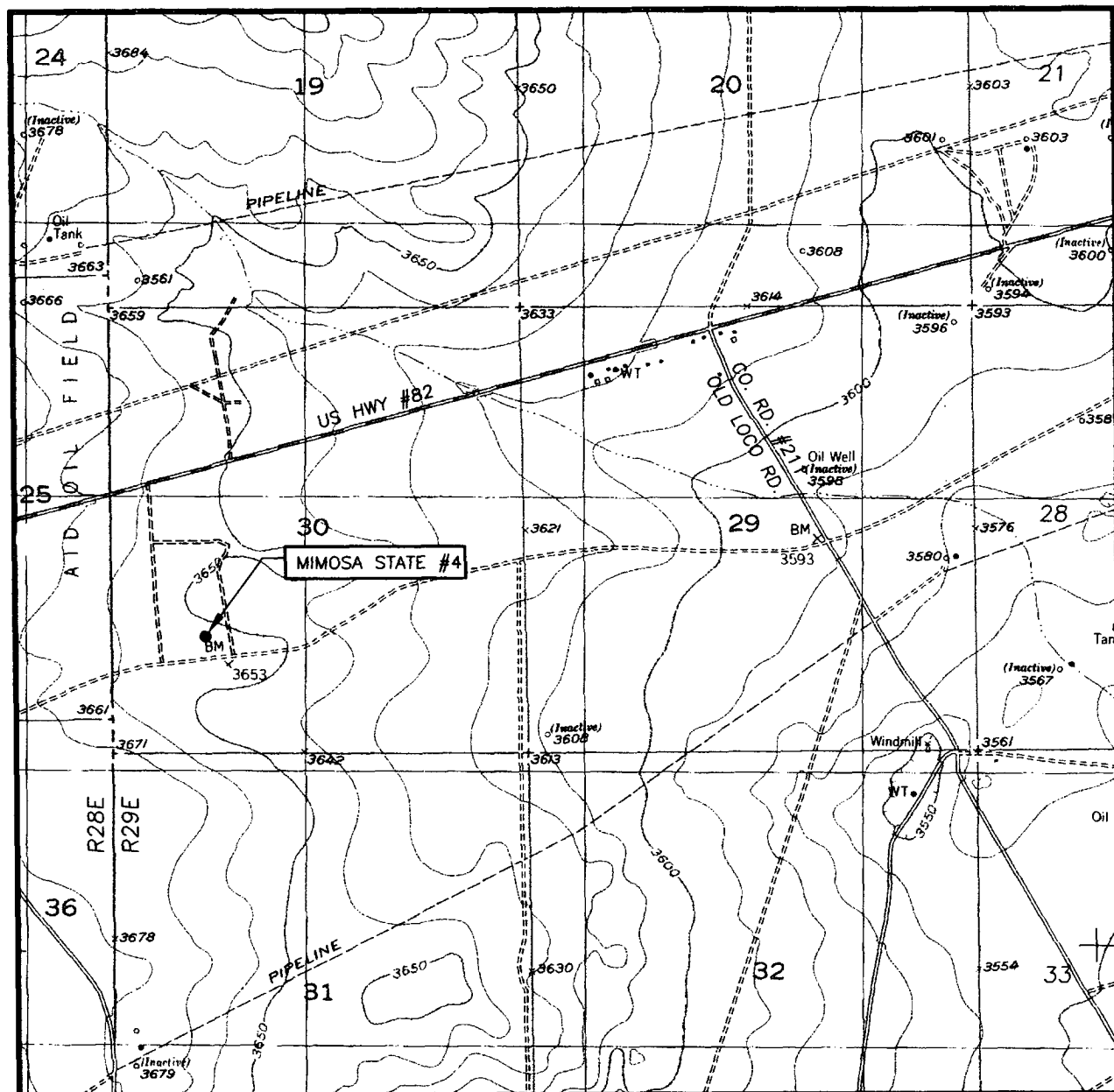
ELEVATION 3655'

OPERATOR MACK ENERGY CORPORATION

LEASE MIMOSA STATE



# LOCATION VERIFICATION MAP



SCALE: 1" = 2000'

CONTOUR INTERVAL:  
RED LAKE SE, N.M. - 10'

SEC. 30 TWP. 17-S RGE. 29-E  
 SURVEY N.M.P.M.  
 COUNTY EDDY STATE NEW MEXICO  
 DESCRIPTION 1403' FSL & 1103' FWL  
 ELEVATION 3655'  
 OPERATOR MACK ENERGY CORPORATION  
 LEASE MIMOSA STATE  
 U.S.G.S. TOPOGRAPHIC MAP  
 RED LAKE SE, N.M.

