

27-12-27-17

NM OIL CONSERVATION
ARTESIA DISTRICT

DEC 18 2017

Form C-102

Revised August 1, 2011

Submit one copy to appropriate
District Office

State of New Mexico
Energy, Minerals & Natural Resources Department
OIL CONSERVATION DIVISION RECEIVED
1220 South St. Francis Dr.
Santa Fe, NM 87505

District I
1625 N. French Dr., Hobbs, NM 88240
Phone: (575) 393-6161 Fax: (575) 393-0720
District II
811 S. First St., Artesia, NM 88210
Phone: (575) 748-1281 Fax: (575) 748-9720
District III
1000 Rio Brazos Road, Aztec, NM 87410
Phone: (505) 334-6178 Fax: (505) 334-6170
District IV
1220 S. St. Francis Dr., Santa Fe, NM 87505
Phone: (505) 476-3460 Fax: (505) 476-3462

AMENDED REPORT
(As-Drilled)

WELL LOCATION AND ACREAGE DEDICATION PLAT

API Number 30-015-44269	Pool Code 90236	Pool Name Wildcat Wolfcamp
Property Code 314855	Property Name CAL-MON "35" FEDERAL	Well Number 171H
OGRID No. 116696	Operator Name OXY USA INC.	Elevation 3456.2'

Surface Location

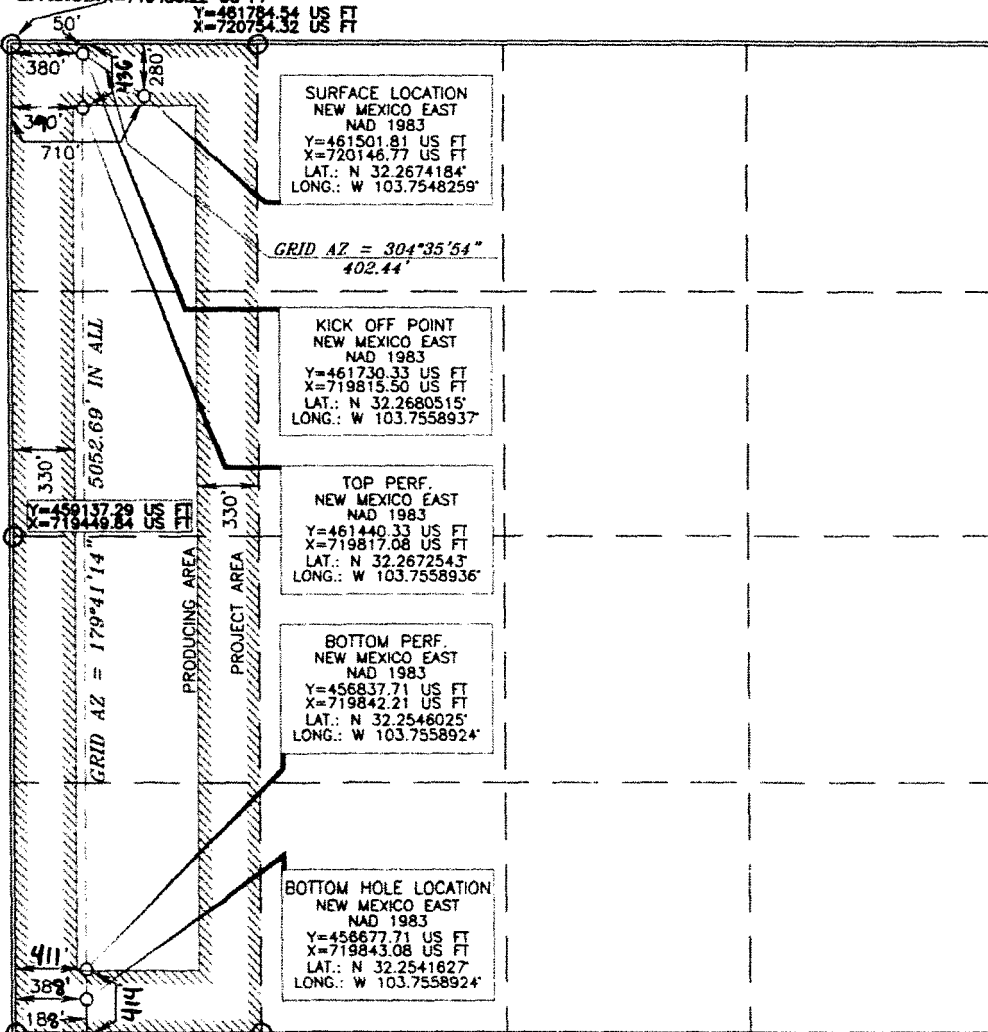
UL or lot no.	Section	Township	Range	Lot Idn	Feet from the	North/South line	Feet from the	East/West line	County
D	35	23 SOUTH	31 EAST, N.M.P.M.		280'	NORTH	710'	WEST	EDDY

Bottom Hole Location If Different From Surface

UL or lot no.	Section	Township	Range	Lot Idn	Feet from the	North/South line	Feet from the	East/West line	County
M	35	23 SOUTH	31 EAST, N.M.P.M.		180' 185	SOUTH	390' 388	WEST	EDDY

Dedicated Acres 160	Joint or Infill Y	Consolidation Code	Order No. BP- 414 FSL 411 FWL TP- 436 FNL 390 FWL
-------------------------------	-----------------------------	--------------------	-----------------------------------------------------------------

No allowable will be assigned to this completion until all interests have been consolidated or a non-standard unit has been approved by the division.



OPERATOR CERTIFICATION

I hereby certify that the information contained herein is true and complete to the best of my knowledge and belief, and that this organization either owns a working interest or unleased mineral interest in the land including the proposed bottom hole location or has a right to drill this well at this location pursuant to a contract with an owner of such a mineral or working interest, or to a voluntary pooling agreement or a compulsory pooling order heretofore entered by the division.

Signature: *[Signature]* Date: **10/12/17**
Printed Name: **Jana Mendiola**
E-mail Address: **jana.mendiola@oxy.com**

SURVEYOR CERTIFICATION

I hereby certify that the well location shown on this plat was plotted from field notes of actual surveys made by me or under my supervision and that the same is true and correct to the best of my belief.

Date of Survey: **FEBRUARY 10, 2017**
Signature and Seal of Professional Surveyor: *[Signature]*
Certificate Number: **15079**

WOF# 170216WL-XY (KA)