

Set 1 Copy To Appropriate District Office
District I - (575) 393-6161
1625 N. French Dr., Hobbs, NM 88240
District II - (575) 748-1283
811 S. First St., Artesia, NM 88210
District III - (505) 334-6178
1000 Rio Brazos Rd., Aztec, NM 87410
District IV - (505) 476-3460
1220 S. St. Francis Dr., Santa Fe, NM 87505

NM OIL CONSERVATION
Energy, Minerals and Natural Resources

DEC 26 2017

OIL CONSERVATION DIVISION
1220 South St. Francis Dr.
Santa Fe, NM 87505

Form C-103
Revised August 1, 2011

WELL API NO.
30-015-04172

5. Indicate Type of Lease
STATE ☒ FEE ☐

6. State Oil & Gas Lease No.

7. Lease Name or Unit Agreement Name
ETZ STATE UNIT

8. Well Number 116

9. OGRID Number
299137

10. Pool name or Wildcat
GRAYBURG JACKSON

SUNDRY NOTICES AND REPORTS ON WELLS
(DO NOT USE THIS FORM FOR PROPOSALS TO DRILL OR TO DEEPEN OR PLUG BACK TO A DIFFERENT RESERVOIR. USE "APPLICATION FOR PERMIT" (FORM C-101) FOR SUCH PROPOSALS.)

1. Type of Well: Oil Well ☒ Gas Well ☐ Other

2. Name of Operator
COG OPERATING LLC

3. Address of Operator
600 W. ILLINOIS, MIDLAND TX 79701

4. Well Location

Unit Letter O : 330 feet from the SOUTH line and 1980 feet from the EAST line
Section 16 Township 17S Range 30E NMPM EDDY County

11. Elevation (Show whether DR, RKB, RT, GR, etc.)
3675' GR

12. Check Appropriate Box to Indicate Nature of Notice, Report or Other Data

NOTICE OF INTENTION TO:

PERFORM REMEDIAL WORK ☐ PLUG AND ABANDON ☒
TEMPORARILY ABANDON ☐ CHANGE PLANS ☐
PULL OR ALTER CASING ☐ MULTIPLE COMPL ☐
DOWNHOLE COMMINGLE ☐

SUBSEQUENT REPORT OF:

REMEDIAL WORK ☐ ALTERING CASING ☐
COMMENCE DRILLING OPNS. ☐ P AND A ☒
CASING/CEMENT JOB ☐

OTHER: ☐

OTHER: ☐

13. Describe proposed or completed operations. (Clearly state all pertinent details, and give pertinent dates, including estimated date of starting any proposed work). SEE RULE 19.15.7.14 NMAC. For Multiple Completions: Attach wellbore diagram of proposed completion or recompletion.

12/06/17-NOTIFIED NMOC D OF MIRU. RU WSU. LD RODS.

12/07/17-ND WH. NU BOPE. TBG STUCK.

12/08/17-RECEIVED APPROVAL FROM NMOC D-GILBERT CORDERO AND CUT TBG.@2450'. LD TUBING. SET CIBP@2450'. CIRCULATED MLF. CASING TESTED GOOD TO 500#.

12/11/17-SPOTTED 75SX OF CLASS "C" CMT FROM 2450'-1976'. TAGGED@1930'. PERFD@1090'. SQUEEZED 40SX CLASS "C" CMT FROM 1090'-990'. WOC&TAGGED@924'. PERFD@595'. SQUEEZED 40SX OF CLASS "C" CMT 595'-495'.

12/12/17-TAGGED@452'. PERFD@60'. SQUEEZED 65SX CLASS "C" CMT FROM 60'-50' DUE TO NO RETURNS.

12/13/17-TAGGED@52'. PERFD@52'. SQUEEZED 40SX OF CLASS "C" FROM 52'-SURFACE W/FULL RETURNS.

CUTOFF WELLHEAD, ANCHORS 3' BELOW SURFACE AND INSTALL MARKER.

Spud Date:

Rig Release Date:

I hereby certify that the information above is true and complete to the best of my knowledge and belief.

SIGNATURE M. Lee Roark TITLE AGENT DATE 12/20/17

Type or print name M. LEE ROARK E-mail address: Lee@JMRServices.com PHONE: (432)853-1725

For State Use Only

APPROVED BY: [Signature] TITLE Staff Mgr DATE 12-26-17

Conditions of Approval (if any):

**WELLBORE DIAGRAM
ETZ STATE #116
FINAL P&A**

Created: 10/17/17 By: LEE R.
 Updated: By:
 Lease: ETZ STATE
 Field: GRAYBURG JACKSON
 Surf. Loc.: 330' FSL & 1980' FEL
 Bot. Loc.:
 County: EDDY St.: NM
 Status:

Well #: 116 Lse. B-936
 API: 30-015-04172
 Unit Ltr.: O Section: 16
 TSHR/Rng: T17S / R301E
 Pool Code: OGRID: 229137
 Directions:

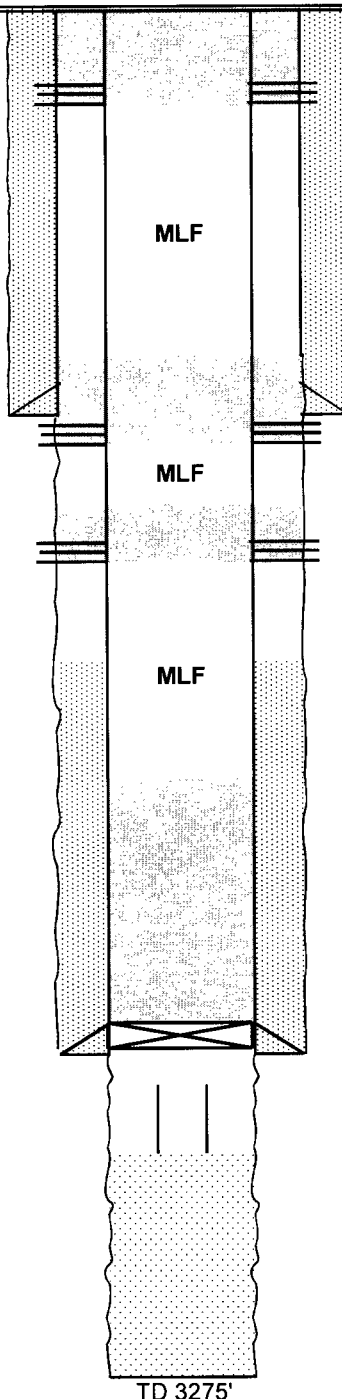
Surface Casing

Size: 8 5/8"
 Wt., Grd.: 32#
 Depth: 545'
 Sxs Cmt: 65
 Circulate: ?
 TOC: ?
 Hole Size: 11"

FORMATION TOPS	
T. Salt	555'
B. Salt	1040'

Production Casing

Size: 7"
 Wt., Grd.: 24#
 Depth: 2534'
 Sxs Cmt: 50
 Circulate: ?
 TOC: ?
 Hole Size: 7-7/8" EST.



P&S 60'-52' W/65SX OF CMT. DUE TO NO RETURNS. WOC&TAG@52'. P&S: 52'-SURFACE W/40SX OF CMT. VERIFY CEMENT TO SURF.

P&S 595'-495' W/30SX OF CMT. WOC&TAG@452'. (T.SALT/SHOE)

P&S 1090'-990' W/25SX OF CMT. WOC&TAG@924'. (B.SALT)

CUT 2-3/8" TUBING@2450' W/APPRVAL FROM NMOCD-GILBERT CORDERO. SET CIBP@2450' + 75SX CMT. FROM 2450'-1976' WOC&TAG@1930'. (PERFS/Q)

Plugback to 2815' w/ gravel.

Grayburg Open Hole: 2534'-3271'

TD 3275'