

NM OIL CONSERVATION

DISTRICT I

P.O. Box 1980, Hobbs, NM 88241-1980

ARTESIA DISTRICT

State of New Mexico

DEC 26 2017

Energy, Minerals and Natural Resources Department

Form C-102

Revised February 10, 1994

Submit to Appropriate District Office

State Lease - 4 Copies

Fee Lease - 3 Copies

DISTRICT II

P.O. Drawer DD, Aramis, NM 88211-0719

DISTRICT III

1000 Rio Braxos Rd., Aztec, NM 87410

DISTRICT IV

P.O. BOX 2088, SANTA FE, N.M. 87504-2088

RECEIVED CONSERVATION DIVISION

P.O. Box 2088

Santa Fe, New Mexico 87504-2088

WELL LOCATION AND ACREAGE DEDICATION PLAT

☐ AMENDED REPORT

API Number 30-015-33230	Pool Code 74680	Pool Name Cemetery WOLFCAMP
Property Code 33413	Property Name SIMMENTAL	Well Number 1
OGRID No. 372233	Operator Name MAMMOTH EXPLORATION, LLC	Elevation 3445'

Surface Location

UL or lot No.	Section	Township	Range	Lot Idn	Feet from the	North/South line	Feet from the	East/West line	County
G	22	20-S	25-E		1980'	NORTH	1980'	EAST	EDDY

Bottom Hole Location If Different From Surface

UL or lot No.	Section	Township	Range	Lot Idn	Feet from the	North/South line	Feet from the	East/West line	County
Dedicated Acres 320	Joint or Infill	Consolidation Code	Order No.						

NO ALLOWABLE WILL BE ASSIGNED TO THIS COMPLETION UNTIL ALL INTERESTS HAVE BEEN CONSOLIDATED
OR A NON-STANDARD UNIT HAS BEEN APPROVED BY THE DIVISION

<p>GEODETIC COORDINATES WGS 84 NMSPC EZ Y=567743.5 X=499081.3 LAT. 32°33'38.55"N LONG. 104°28'13.76"W</p>			<p>OPERATOR CERTIFICATION</p> <p>I hereby certify the information contained herein is true and complete to the best of my knowledge and belief.</p> <p><i>Dora Lara</i> Signature</p> <p>Dora Lara Printed Name</p> <p>Engr Asst. Title</p> <p>1-26-04 Date</p>
	<p>SURVEYOR CERTIFICATION</p> <p>I hereby certify that the well location shown on this plat was plotted from field notes of actual surveys made by me or under my supervision, and that the same is true and correct to the best of my belief.</p> <p>DECEMBER 19, 2002</p> <p>Date Surveyed</p> <p>Signature & Seal of Professional Surveyor</p> <p><i>Ronald J. Eidson</i> 12/29/02</p> <p>02110994</p> <p>Certificate No. RONALD J. EIDSON 3239 GARY EIDSON 12641</p>		
	<p>A.W.B.</p>		
	<p>Professional Surveyor</p>		

**SIMMENTAL #1
30-015-33230
Eddy County, New Mexico**

NM OIL CONSERVATION
ARTESIA DISTRICT
DEC 26 2017
RECEIVED

Recomplete from Morrow to Wolfcamp

December 22, 2017

1. MIRU PU
2. Kill well down tbg with fresh water
3. POH w/ 9309' of 2 3/8" tbg with SN on bottom
4. Set CIBP at 9400' KB (42' above Morrow perf at 9442').
Dump bail 30' of cmt on top of CIBP. Load and test casing and plug to 2500 PSI.
5. Perforate Wolfcamp from 6982' to 7000' (18 ft) with 3 1/8 Slick Gun loaded at 3 SPF at 120 Deg phasing with 21 gram minimum charge.
6. RIH with 4 1/2" Arrow Set PKR, SN and 2 3/8" tbg. Set PKR 6900' +/-.
7. Install tree, place on production.



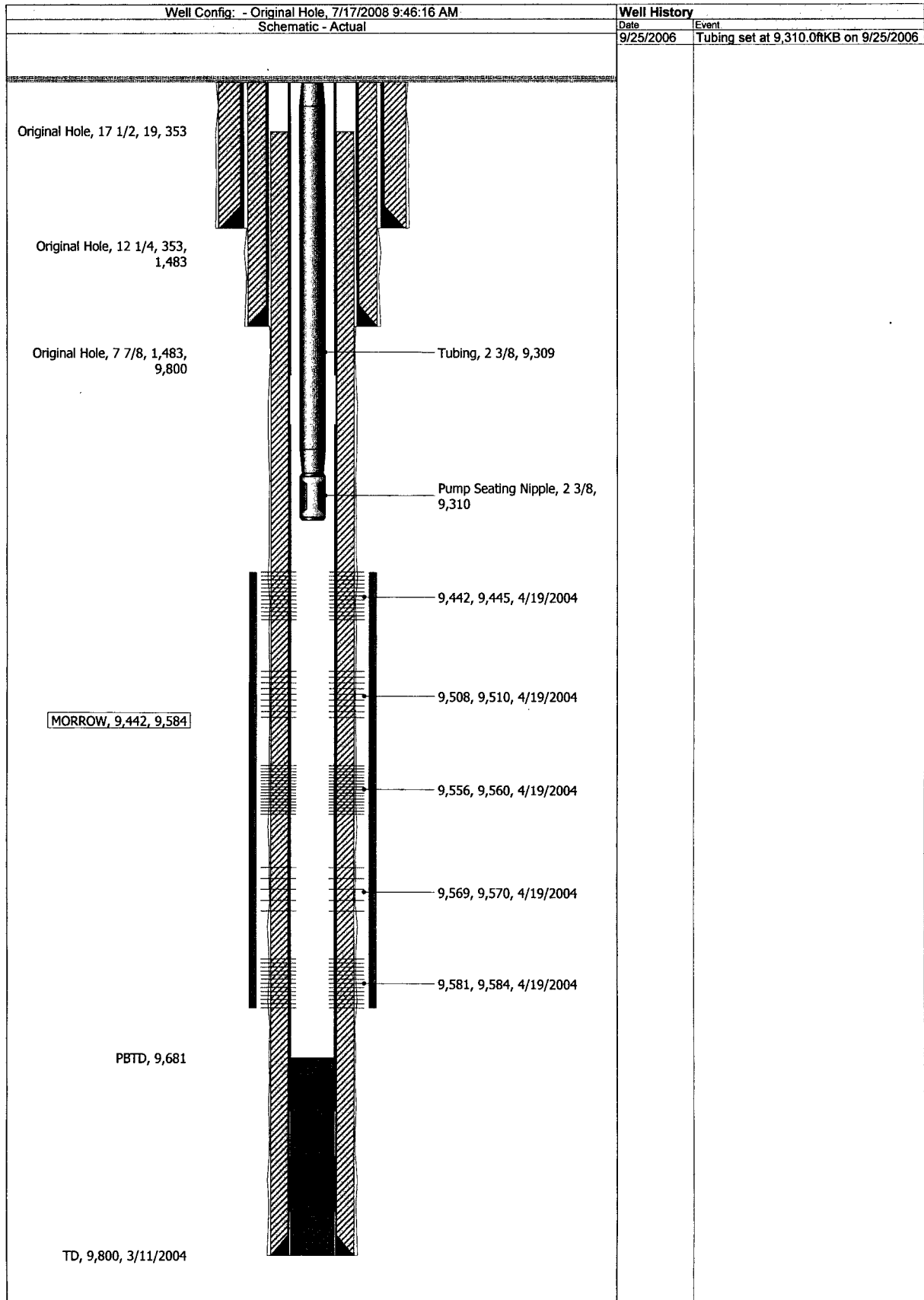
Current Wellbore Schematic

SIMMENTAL 1

Field: Undes Cemetary (Morrow)
County: EDDY
State: NEW MEXICO
Elevation: GL 3,445.00 KB 3,464.00
KB Height: 19.00

Location: SEC 22, 20S-25E, 1980 FNL & 1980 FEL

Spud Date: 2/18/2004
Initial Compl. Date:
API #: 3001533230
CHK Property #: 891341
1st Prod Date: 4/28/2004
PBTD: Original Hole - 9681.0
TD: 9,800.0



DEC 26 2017

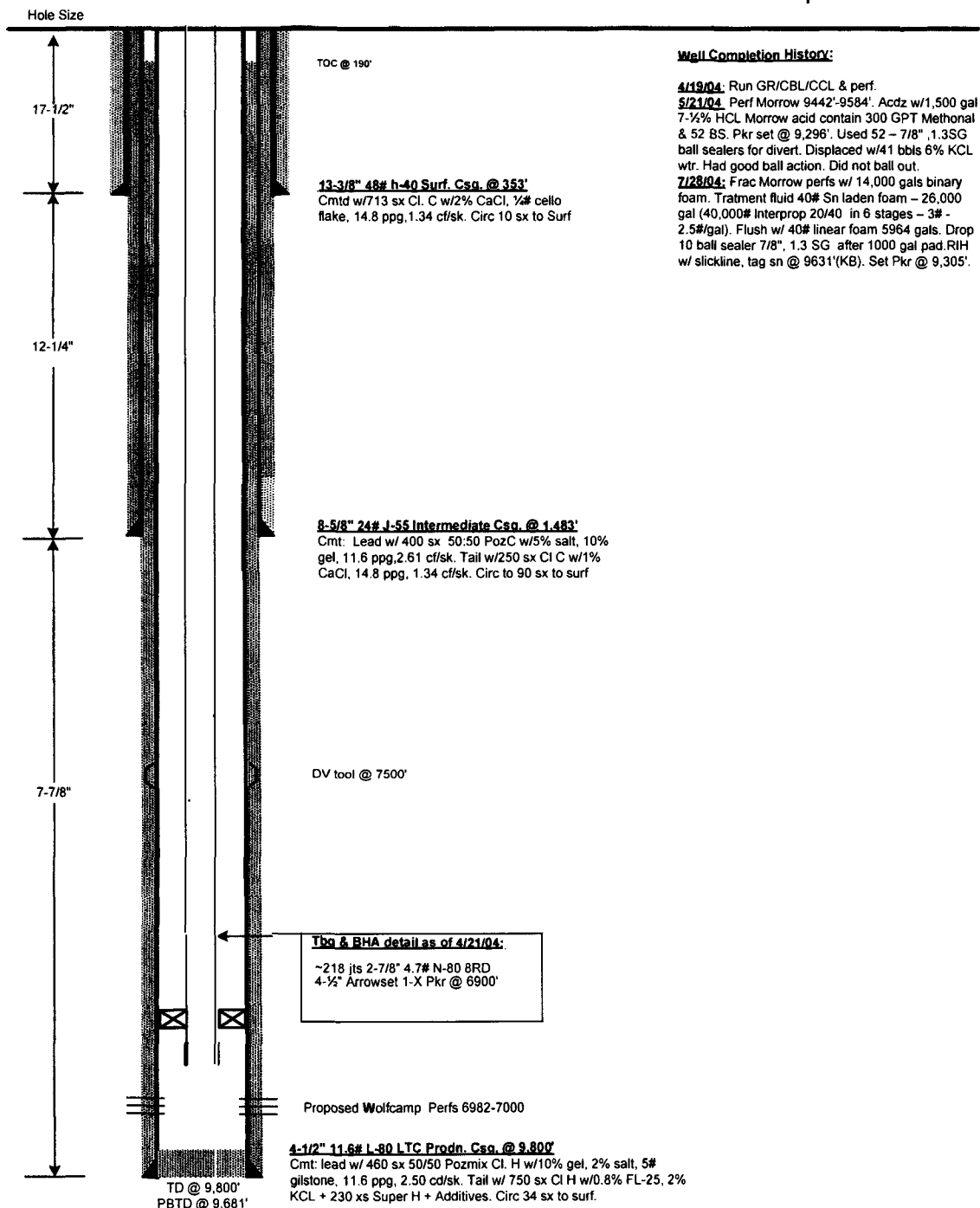
PROPOSED WELLBORE SCHEMATIC

RECEIVED

WELL : SIMMENTAL # 1
FIELD : CEMETARY (Wolfcamp)
COUNTY : EDDY STATE : NM
LOCATION : 1980' FNL 1980' FEL SEC. 22-T20S-R25E
ELEVATION : GL 3,445' , KB 3,464'
API NO. : 30-015-33230

MAMMOTH

Spud: 02/18/04
Completion: 03/13/04
Recompletion: 12/30/17



Well Completion History:

4/19/04: Run GR/CBL/CCL & perf.
5/21/04: Perf Morrow 9442'-9584'. Acdz w/1,500 gal
7-1/2% HCL Morrow acid contain 300 GPT Methonal
& 52 BS. Pkr set @ 9,296'. Used 52 - 7/8" , 1.3SG
ball sealers for divert. Displaced w/41 bbls 6% KCL
wtr. Had good ball action. Did not ball out.
7/28/04: Frac Morrow perfs w/ 14,000 gals binary
foam. Treatment fluid 40# Sn laden foam - 26,000
gal (40,000# Interprop 20/40 in 6 stages - 3# -
2.5#/gal). Flush w/ 40# linear foam 5964 gals. Drop
10 ball sealer 7/8" , 1.3 SG after 1000 gal pad. RIH
w/ slickline, tag sn @ 9631'(KB). Set Pkr @ 9,305'.

PREPARED BY: Russ Mathis

UPDATED BY:

DATE: 12/22/2017

DATE: