

District I  
1625 N. French Dr., Hobbs, NM 88240  
Phone: (575) 393-6161 Fax: (575) 393-0720  
District II  
811 S. First St., Artesia, NM 88210  
Phone: (575) 748-1283 Fax: (575) 748-9720  
District III  
1000 Rio Brazos Road, Aztec, NM 87410  
Phone: (505) 334-6178 Fax: (505) 334-6170  
District IV  
1220 S. St. Francis Dr., Santa Fe, NM 87505  
Phone: (505) 476-3460 Fax: (505) 476-3462

State of New Mexico  
Energy, Minerals & Natural Resources  
Department  
OIL CONSERVATION DIVISION  
1220 South St. Francis Dr.  
Santa Fe, NM 87505

NM OIL CONSERVATION

ARTESIA DISTRICT

FORM C-102

Revised August 1, 2011

DEC 20 2017 Submit one copy to appropriate

District Office

RECEIVED

☐ AMENDED REPORT

WELL LOCATION AND ACREAGE DEDICATION PLAT

<sup>1</sup> API Number 30-015-44303	<sup>2</sup> Pool Code 96101	<sup>3</sup> Pool Name SWD; DEVONIAN
<sup>4</sup> Property Code 318050	<sup>5</sup> Property Name RUSTLER BREAKS SWD	<sup>6</sup> Well Number #3
<sup>7</sup> GRID No. 371287	<sup>8</sup> Operator Name BLACK RIVER WATER MANAGEMENT COMPANY, LLC.	<sup>9</sup> Elevation 3115'

<sup>10</sup>Surface Location

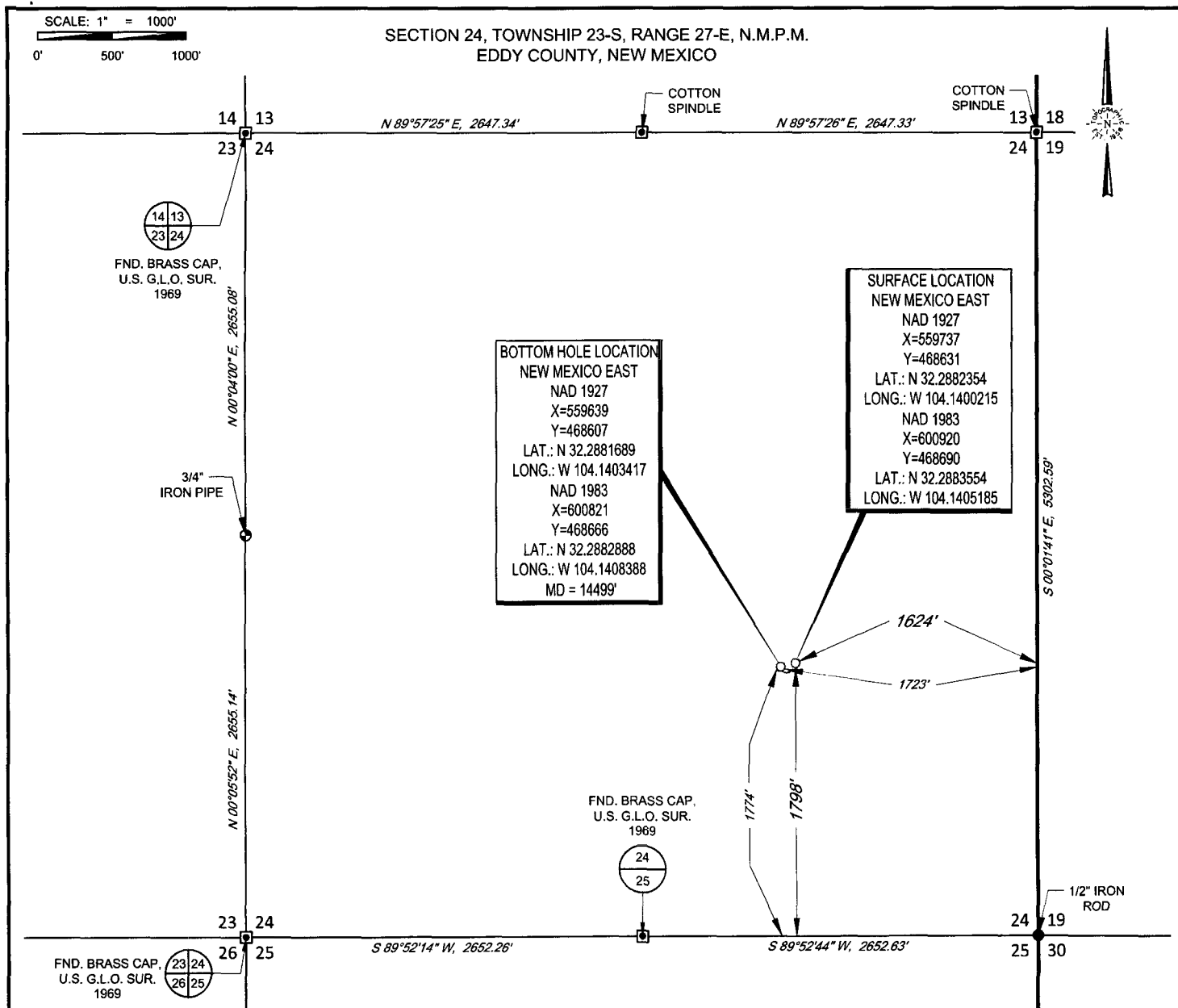
UL or lot no.	Section	Township	Range	Lot Idn	Feet from the	North/South line	Feet from the	East/West line	County
J	24	23-S	27-E	-	1798'	SOUTH	1624'	EAST	EDDY

UL or lot no.	Section	Township	Range	Lot Idn	Feet from the	North/South line	Feet from the	East/West line	County
J	24	23-S	27-E	-	1774'	SOUTH	1723'	EAST	EDDY

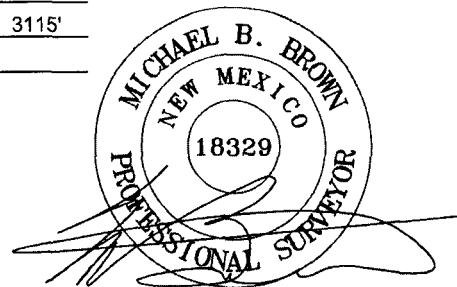
<sup>12</sup> Dedicated Acres 640	<sup>13</sup> Joint or Infill	<sup>14</sup> Consolidation Code	<sup>15</sup> Order No.
--------------------------------------	-------------------------------	----------------------------------	-------------------------

No allowable will be assigned to this completion until all interests have been consolidated or a non-standard unit has been approved by the division.

<p><b>BOTTOM HOLE LOCATION</b> NEW MEXICO EAST NAD 1927 X=559639 Y=468607 LAT.: N 32.2881689 LONG.: W 104.1403417 NAD 1983 X=600821 Y=468666 LAT.: N 32.2882888 LONG.: W 104.1408388 MD = 14499'</p>	<p><b>SURFACE LOCATION</b> NEW MEXICO EAST NAD 1927 X=559737 Y=468631 LAT.: N 32.2882354 LONG.: W 104.1400215 NAD 1983 X=600920 Y=468690 LAT.: N 32.2883554 LONG.: W 104.1405185</p>	<p><b><sup>17</sup>OPERATOR CERTIFICATION</b> I hereby certify that the information contained herein is true and complete to the best of my knowledge and belief, and that this organization either owns a working interest or unleased mineral interest in the land including the proposed bottom hole location or has a right to drill this well at this location pursuant to a contract with an owner of such a mineral or working interest, or to a voluntary pooling agreement or a compulsory pooling order heretofore entered by the division.</p> <p><i>M. Brooks Verschuere</i> 11/28/17 Signature Date</p> <p>M. Brooks Verschuere Printed Name</p> <p>Blushay@matadorresources.com E-mail Address</p>
		<p><b><sup>18</sup>SURVEYOR CERTIFICATION</b> I hereby certify that the well location shown on this plat was plotted from field notes of actual surveys made by me or under my supervision, and that the same is true to the best of my belief.</p> <p>06/13/2017 Date of Survey</p> <p><i>Michael Brown</i> Signature and Seal of Professional Surveyor</p> <p>18329 Certificate Number</p>



LEASE NAME & WELL NO.: RUSTLER BREAKS SWD #3  
SECTION 24 TWP 23-S RGE 27-E SURVEY N.M.P.M.  
COUNTY EDDY STATE NM ELEVATION 3115'  
DESCRIPTION 1798' FSL & 1624' FEL



Michael Blake Brown, P.S. No. 18329  
NOVEMBER 14, 2017



**TOPOGRAPHIC**  
LOYALTY INNOVATION LEGACY

1400 EVERMAN PARKWAY, Ste. 197 • FT. WORTH, TEXAS 76140  
TELEPHONE: (817) 744-7512 • FAX (817) 744-7548  
2903 NORTH BIG SPRING • MIDLAND, TEXAS 79705  
TELEPHONE: (432) 682-1653 OR (800) 767-1653 • FAX (432) 682-1743  
WWW.TOPOGRAPHIC.COM

BLACK RIVER WATER  
MANAGEMENT COMPANY, LLC.

<b>RUSTLER BREAKS SWD #3</b>	<b>REVISION:</b>	
<b>DATE:</b> 11/14/17		
<b>FILE:</b> AD_RUSTLER_BREAKS_SWD_3		
<b>DRAWN BY:</b> GJU		
<b>SHEET :</b> 1 OF 1		

NOTES:

1. ORIGINAL DOCUMENT SIZE: 8.5" X 11"
2. ALL BEARINGS, DISTANCES, AND COORDINATE VALUES CONTAINED HEREIN ARE GRID BASED UPON THE NEW MEXICO STATE PLANE COORDINATE SYSTEM, EAST ZONE, U.S. SURVEY FEET, NORTH AMERICAN DATUM 1927.
3. THIS WELL LOCATION SHOWN HEREON HAS BEEN SURVEYED ON THE GROUND UNDER MY SUPERVISION AND PREPARED ACCORDING TO THE EVIDENCE FOUND AT THE TIME OF SURVEY, AND DATA PROVIDED BY EGG RESOURCES, INC. THIS CERTIFICATION IS MADE AND LIMITED TO THOSE PERSONS OR ENTITIES SHOWN ON THE FACE OF THIS PLAT AND IS NON-TRANSFERABLE. THIS SURVEY IS CERTIFIED FOR THIS TRANSACTION ONLY.