

District I  
1625 N. French Dr., Hobbs, NM 88240  
Phone: (575) 393-6161 Fax: (575) 393-0720  
District II  
811 S. First St., Artesia, NM 88210  
Phone: (575) 748-1283 Fax: (575) 748-9720  
District III  
1000 Rio Brazos Road, Aztec, NM 87410  
Phone: (505) 334-6178 Fax: (505) 334-6170  
District IV  
1220 S. St. Francis Dr., Santa Fe, NM 87505  
Phone: (505) 476-3460 Fax: (505) 476-3462

State of New Mexico  
Energy, Minerals & Natural Resources  
OIL CONSERVATION DIVISION  
1220 South St. Francis Dr.  
Santa Fe, NM 87505

Form C-102  
Revised August 1, 2011  
Submit one copy to appropriate  
District Office  
DEC 21 2017  
☐ AMENDED REPORT

RECEIVED

WELL LOCATION AND ACREAGE DEDICATION PLAT

<sup>1</sup> API Number <b>30-015-44613</b>	<sup>2</sup> Pool Code <b>98220</b>	<sup>3</sup> Pool Name <b>PURPLE SAGE; WOLFCAMP</b>
<sup>4</sup> Property Code <b>320518</b>	<sup>5</sup> Property Name <b>TREBUCHET FEE 23-28-19 WXY</b>	<sup>6</sup> Well Number <b>3H</b>
<sup>7</sup> OGRID No. <b>372098</b>	<sup>8</sup> Operator Name <b>MARATHON OIL PERMIAN LLC</b>	<sup>9</sup> Elevation <b>3083</b>

<sup>10</sup> Surface Location

UL or lot no.	Section	Township	Range	Lot Idn	Feet from the	North/South line	Feet from the	East/West line	County
D (LOT 1)	19	T23S	R28E		270	NORTH	850	WEST	EDDY

<sup>11</sup> Bottom Hole Location If Different From Surface

UL or lot no.	Section	Township	Range	Lot Idn	Feet from the	North/South line	Feet from the	East/West line	County
M (LOT 4)	19	T23S	R28E		330	SOUTH	330	WEST	EDDY

<sup>12</sup> Dedicated Acres <b>318.34</b>	<sup>13</sup> Joint or Infill	<sup>14</sup> Consolidation Code	<sup>15</sup> Order No.
--	-------------------------------	----------------------------------	-------------------------

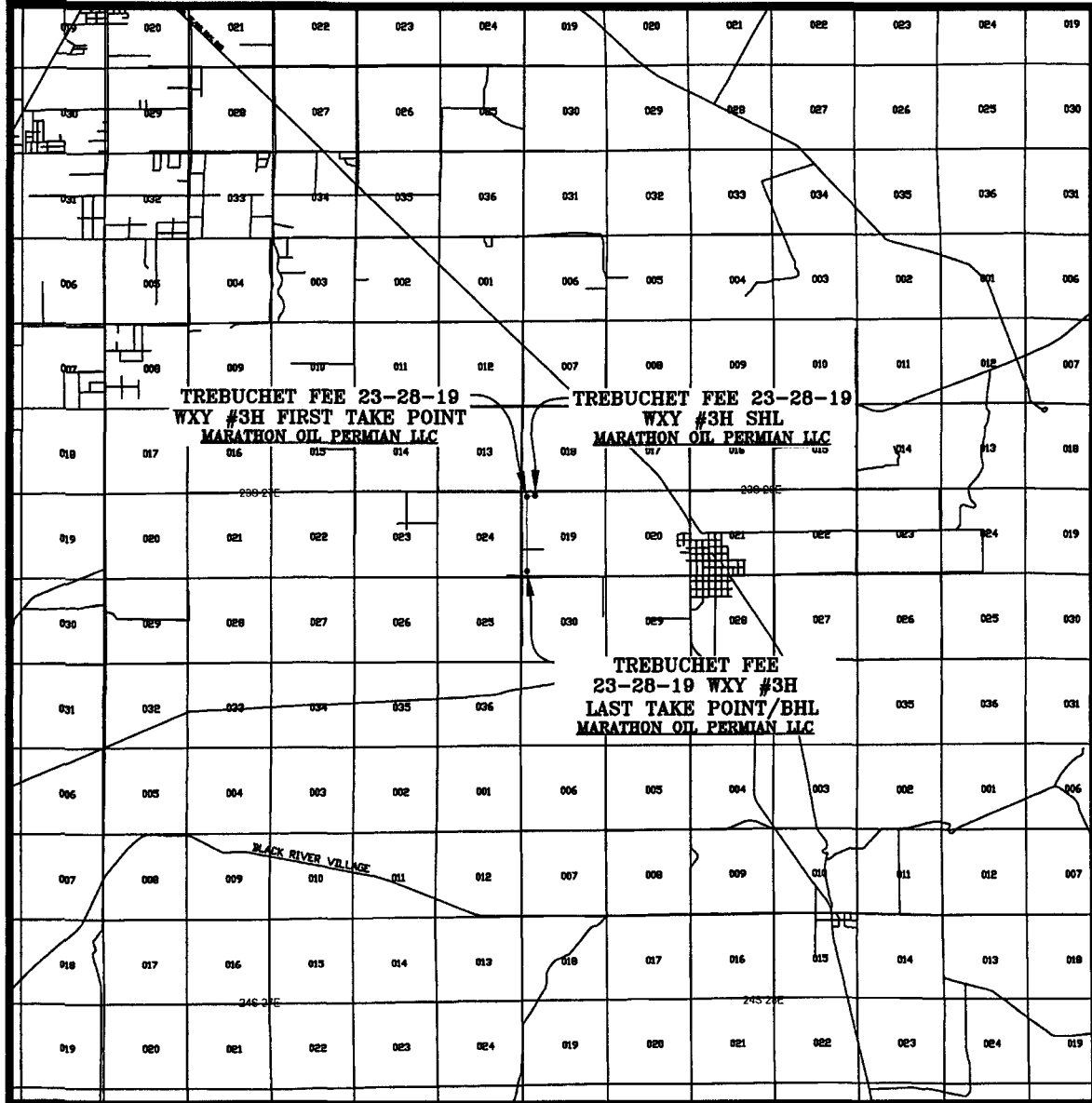
No allowable will be assigned to this completion until all interests have been consolidated or a non-standard unit has been approved by the division.

<p><sup>16</sup></p> <p>SECTION 13 SECTION 24 SECTION 18 SECTION 19 SECTION 25 SECTION 30</p> <p>330' 270' 850' 330'</p> <p>FIRST TAKE LAST TAKE/BHL</p> <p>330' 330' 330'</p> <p>R-27-E R-28-E</p> <p>330' 330'</p> <p>CALLED 318.34 ACRE PRODUCING AREA</p> <p>CORNER COORDINATES NAD 83, SPCS NM EAST A - Y: 472198.23' / X: 602542.35' B - Y: 472208.49' / X: 605187.51' C - Y: 466881.39' / X: 605195.28' D - Y: 466895.65' / X: 602544.92'</p>	<p><b>SURFACE HOLE LOCATION</b> 270' FNL 850' FWL NAD 83, SPCS NM EAST X:603392.53' / Y:471931.54' LAT:32.29725357N / LDN:104.13249764W NAD 27, SPCS NM EAST X:562210.02' / Y:471872.52' LAT:32.29713355N / LDN:104.1320062W</p> <p><b>FIRST TAKE POINT</b> 330' FNL 330' FWL NAD 83, SPCS NM EAST X:602872.51' / Y:471869.51' LAT:32.29708572N / LDN:104.13418101W NAD 27, SPCS NM EAST X:561690.01' / Y:471810.50' LAT:32.29696573N / LDN:104.13368393W</p> <p><b>LAST TAKE POINT/BOTTOM HOLE LOCATION</b> 330' FSL 330' FWL NAD 83, SPCS NM EAST X:602874.76' / Y:467223.90' LAT:32.28431559N / LDN:104.13420164W NAD 27, SPCS NM EAST X:561692.15' / Y:467165.01' LAT:32.28419551N / LDN:104.13370498W</p> <p><b>CORNER COORDINATES</b> NAD 27, SPCS NM EAST A - Y: 472139.21' / X: 561359.86' B - Y: 472149.44' / X: 564004.98' C - Y: 466822.68' / X: 564012.63' D - Y: 466836.77' / X: 561362.31'</p>	<p><b><sup>17</sup> OPERATOR CERTIFICATION</b> I hereby certify that the information contained herein is true and complete to the best of my knowledge and belief, and that this organization either owns a working interest or undivided mineral interest in the land including the proposed bottom hole location or has a right to drill this well at this location pursuant to a contract with an owner of such a mineral or working interest, or to a voluntary pooling agreement or a compulsory pooling order heretofore entered by the division.</p> <p><i>Melissa Szudera</i> Signature Date <b>12/19/2017</b></p> <p><b>Melissa Szudera</b> Printed Name <b>mszudera@marathonoil.com</b> E-mail Address</p> <p><b><sup>18</sup> SURVEYOR CERTIFICATION</b> I hereby certify that the well location shown on this plat was plotted from field notes of actual surveys made by me or under my supervision, and that the same is true and correct to the best of my belief.</p> <p><b>NOVEMBER 07, 2017</b> Date of Survey Signature and Seal of Professional Surveyor <b>LLOYD P. SHORT</b> Certificate Number <b>21653</b></p>
--	--	--

SCALE: 1" = 2000'  
CONTOUR INTERVAL = 5'

PREPARED BY:  
R-SQUARED GLOBAL, LLC  
1309 LOUISVILLE AVENUE, MONROE, LA 71201  
318-323-8900 OFFICE  
JOB No. R3798\_001

# VICINITY MAP



SEC. 19 TWP. 23-S RGE. 28-E  
 SURVEY: N.M.P.M.  
 COUNTY: EDDY  
 DESCRIPTION: 270' FNL & 850' FWL  
 ELEVATION: 3083'  
 OPERATOR: MARATHON OIL PERMIAN LLC  
 LEASE: TREBUCHET FEE 23-28-19  
 U.S.G.S. TOPOGRAPHIC MAP: OTIS, N.M.

SCALE: 1" = 2 MILES

PREPARED BY:  
 R-SQUARED GLOBAL, LLC  
 1309 LOUISVILLE AVENUE, MONROE, LA 71201  
 318-323-6900 OFFICE  
 JOB No. R3798\_001

# WELL PAD SURFACE

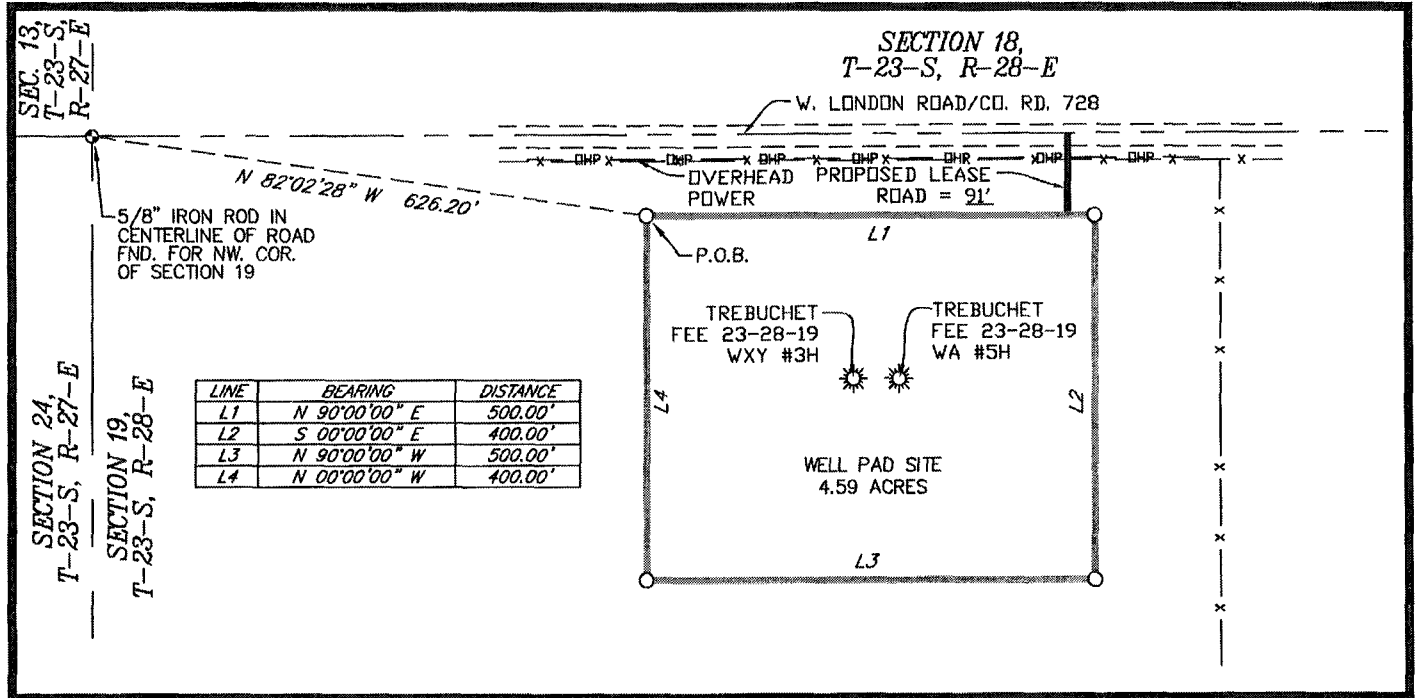
100' 0' 100' 200'  
SCALE: 1" = 200'

SEC. 19 TWP. 23-S RGE. 28-E

SURVEY: N.M.P.M.

COUNTY: EDDY

U.S.G.S. TOPOGRAPHIC MAP: OTIS, N.M.



## FIELD NOTES DESCRIBING

A tract of land being 4.59 acres. Said tract being located in Section 19, Township 23 South, Range 28 East, New Mexico Principal Meridian, Eddy County, New Mexico.

Being more particularly described by metes and bounds as follows:

**BEGINNING** at a point from which a 5/8 inch iron rod in the centerline of W. London Road/County Road 728 found for the Northwest corner of said Section 19 bears, N 82°02'28" W a distance of 626.20 feet.

### THENCE

N 90°00'00" E a distance of 500.00 feet to the Northeast corner of this tract, and S 00°00'00" E a distance of 400.00 feet to the Southeast corner of this tract, and N 90°00'00" W a distance of 500.00 feet to the Southwest corner of this tract, and N 00°00'00" W a distance of 400.00 feet to the **POINT OF BEGINNING**.

The total area of the herein described tract contains 4.59 acres of land.

All bearings and coordinates refer to NAD 83, New Mexico State Plane Coordinate System, East Zone, U.S. Survey Feet. (All bearings and distances are grid measurements.)

Title information furnished by Marathon Oil Permian LLC.

Reference accompanying Certificate of Survey prepared in conjunction with this legal description for easement.

STATE OF NEW MEXICO  
COUNTY OF EDDY

I, Lloyd P. Short, New Mexico Professional Surveyor No. 21653, do hereby certify that this easement survey plat and the actual survey on the ground upon which it is based were performed by me or under my direct supervision; that I am responsible for this survey; that this survey meets the minimum standards for surveying in New Mexico; and that it is true and correct to the best of my knowledge and belief. I further certify that this survey is not a land division or subdivision as defined in the New Mexico Subdivision Act and that this instrument is an easement survey plat crossing an existing tract or tracts.



LLOYD P. SHORT, PS No. 21653 DATE: NOVEMBER 07, 2017

*Lloyd P. Short*

**BASIS OF BEARING**  
ALL BEARINGS AND COORDINATES REFER TO NAD 83, NEW MEXICO STATE PLANE COORDINATE SYSTEM, EAST ZONE, U.S. SURVEY FEET. (ALL BEARINGS AND DISTANCES ARE GRID MEASUREMENTS.)

**LEGEND** P.O.B. POINT OF BEGINNING

R3796\_001

== == == == PROP. LEASE RD. ———— ARC LIMITS  
== == == == EDGE OF ROAD — x — x — FENCE  
——— SURFACE SITE EDGE ——— SECTION LINE  
——— EXIST. PIPELINE ——— OVERHEAD POWER  
⊗ MONUMENT Ⓞ POWER POLE ● QUARTER SPLIT

PLAT FOR A SURFACE SITE ON THE PROPERTY OF <b>REED T. KIMBLEY</b> EDDY COUNTY, NEW MEXICO			
REV.	DATE	DESCRIPTION	BY
SHEET 4 OF 7			
DRAWN BY: DEF		1309 LOUISVILLE AVE.	
DATE: 10/30/2017		MONROE, LA 71201	
CHECKED BY: LPS		(318) 323-6900	
		FAX (318) 362-0064	

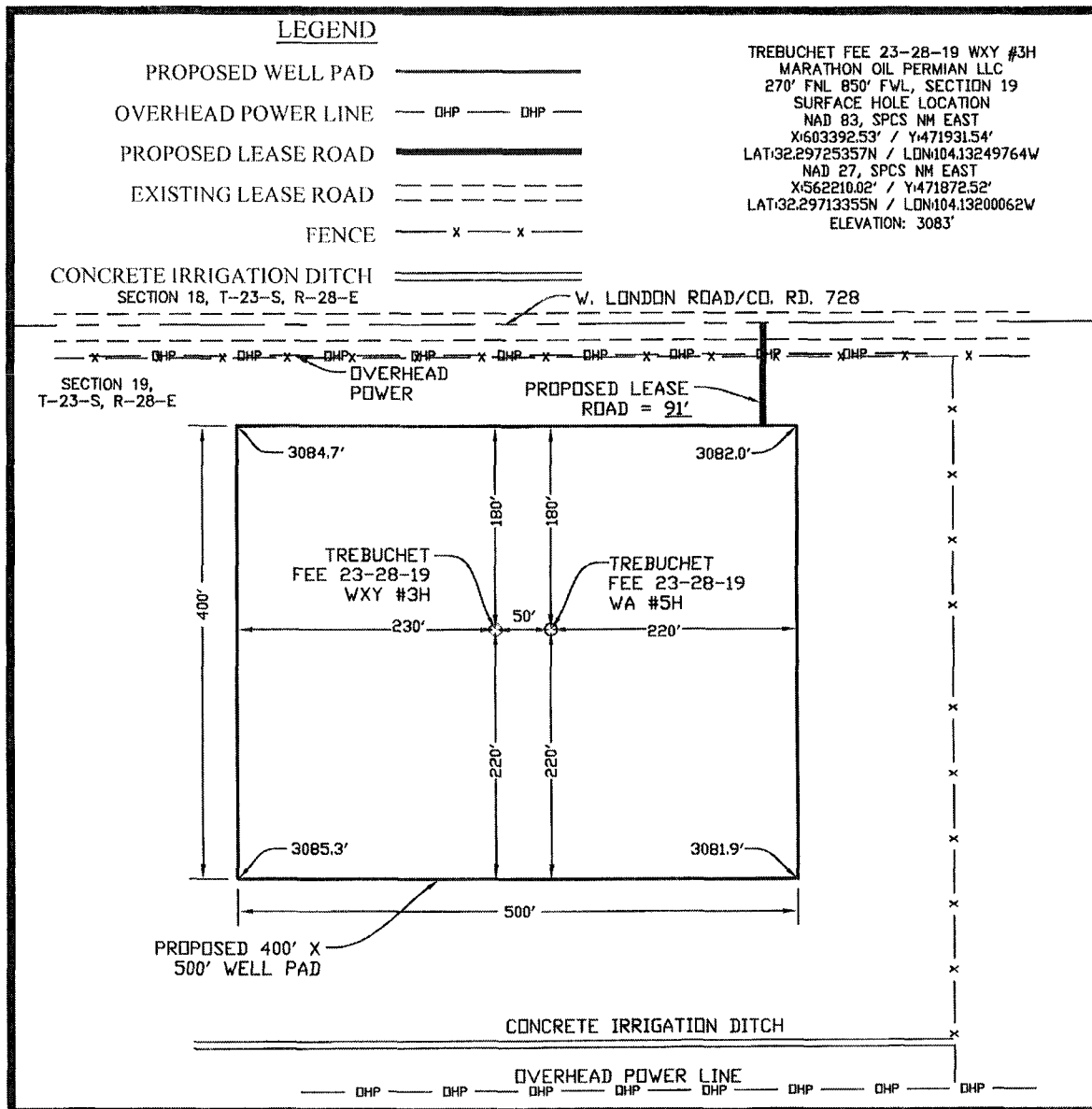
# WELL PAD TOPO

SEC. 19 TWP. 23-S RGE. 28-E

SURVEY: N.M.P.M.

COUNTY: EDDY

U.S.G.S. TOPOGRAPHIC MAP: OTIS, N.M.



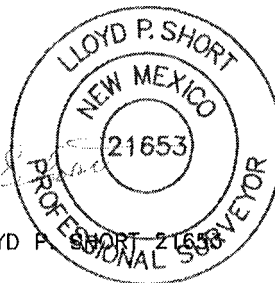
## DIRECTIONS TO LOCATION:

FROM THE INTERSECTION OF U.S. HIGHWAY 62/WEST GREENE STREET AND U.S. 180 W./U.S. 62 W./S. CANAL STREET IN CARLSBAD, NEW MEXICO, TRAVEL SOUTH ON U.S. 62 W./S. CANAL STREET TOWARD W. TANSILL ST. FOR 2.0 MILES TO SLIGHT LEFT ONTO U.S.-285 SOUTH. TRAVEL SOUTH ON U.S.-285 SOUTH FOR 9.3 MILES TO W. LONDON ROAD/CO. ROAD 728 ON THE RIGHT. TRAVEL WEST ON W. LONDON ROAD FOR 1.6 MILES TO PROPOSED WELLS 270 FEET ON THE LEFT.

## NOTE:

THIS IS NOT A BOUNDARY SURVEY, APPARENT PROPERTY CORNERS AND PROPERTY LINES ARE SHOWN FOR INFORMATION ONLY. BOUNDARY DATA SHOWN IS FROM STATE OF NEW MEXICO OIL CONSERVATION DIVISION FORM C-102 INCLUDED IN THIS SUBMITTAL.

NOVEMBER 07, 2017

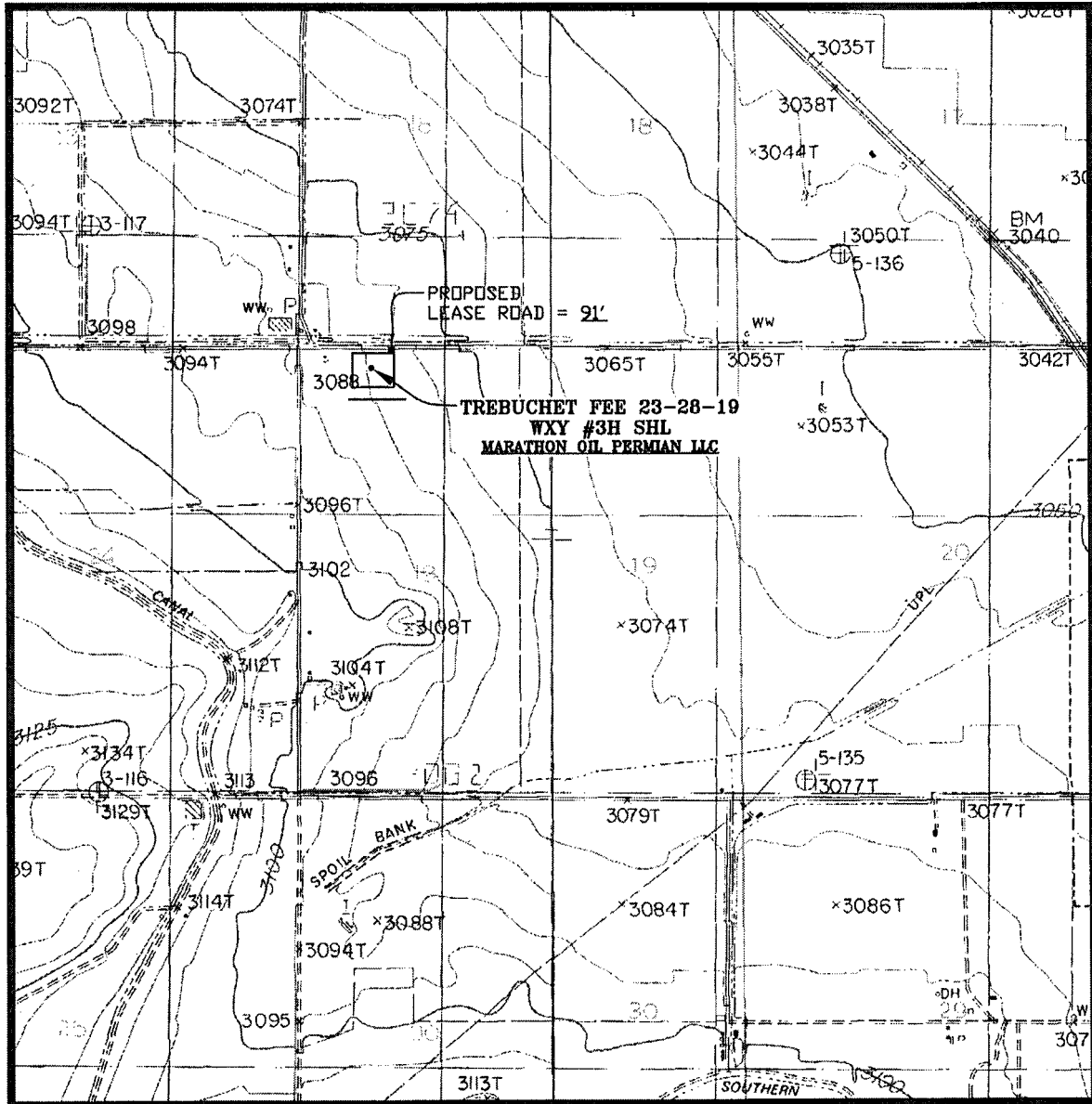


LLOYD P. SHORT 21653

PREPARED BY:  
R-SQUARED GLOBAL, LLC  
1309 LOUISVILLE AVENUE, MONROE, LA 71201  
318-323-6800 OFFICE  
JOB No. R3786\_001

75' 0' 75' 150'  
SCALE: 1" = 150'

# WELL PAD LOCATION VERIFICATION MAP

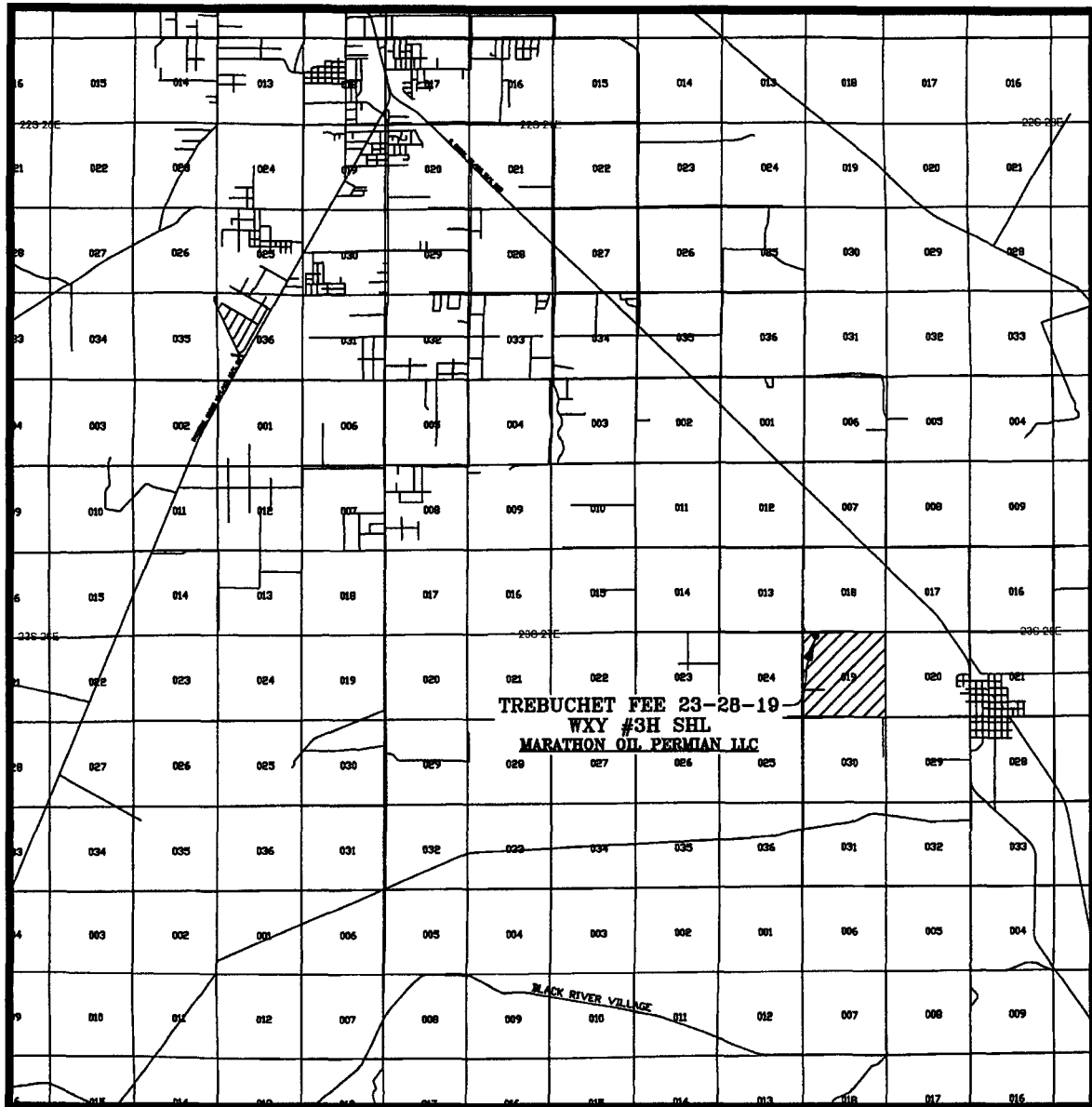


SEC. 19 TWP. 23-S RGE. 28-E  
 SURVEY: N.M.P.M.  
 COUNTY: EDDY  
 DESCRIPTION: 270' FNL & 850' FWL  
 ELEVATION: 3083'  
 OPERATOR: MARATHON OIL PERMIAN LLC  
 LEASE: TREBUCHET FEE 23-28-19  
 U.S.G.S. TOPOGRAPHIC MAP: OTIS, N.M.

SCALE: 1" = 2000'  
 CONTOUR INTERVAL = 5'

PREPARED BY:  
 R-SQUARED GLOBAL, LLC  
 1309 LOUISVILLE AVENUE, MONROE, LA 71201  
 318-323-8900 OFFICE  
 JOB No. R3798\_001

EXISTING ACCESS ROAD VICINITY MAP  
TREBUCHET FEE 23-28-19 WXY #3H  
270' FNL & 850' FWL  
SEC. 19 TWP. 23-S RGE. 28-E  
SURVEY: N.M.P.M.  
COUNTY: EDDY  
U.S.G.S. TOPOGRAPHIC MAP: OTIS, N.M.



SCALE: 1" = 2 MILES

PREPARED BY:  
R-SQUARED GLOBAL, LLC  
1309 LOUISVILLE AVENUE, MONROE, LA 71201  
318-323-8900 OFFICE  
JOB No. R3796\_001