

Submit 1 Copy To Appropriate District
Office
District I
1625 N. French Dr., Hobbs, NM 88240
District II
1301 W. Grand Ave., Artesia, NM 88210
District III
1000 Rio Brazos Rd., Aztec, NM 87410
District IV
1220 S. St. Francis Dr., Santa Fe, NM
87505

State of New Mexico
Energy, Minerals and Natural Resources

Form C-103
Revised July 18, 2013

OIL CONSERVATION DIVISION
1220 South St. Francis Dr.
Santa Fe, NM 87505

| |
|---|
| WELL API NO. 30-015-44320 |
| 5. Indicate Type of Lease STATE <input checked="" type="checkbox"/> FEE <input type="checkbox"/> |
| 6. State Oil & Gas Lease No. |
| 7. Lease Name or Unit Agreement Name: Remuda North 30 State |
| 8. Well Number 701H |
| 9. OGRID Number 005380 |
| 10. Pool name or Wildcat Forty-Niner Ridge Bone Spring, West |

| | |
|--|--|
| SUNDRY NOTICES AND REPORTS ON WELLS (DO NOT USE THIS FORM FOR PROPOSALS TO DRILL OR TO DEEPEN OR PLUG BACK TO A DIFFERENT RESERVOIR. USE "APPLICATION FOR PERMIT" (FORM C-101) FOR SUCH PROPOSALS.) | |
| 1. Type of Well: Oil Well <input checked="" type="checkbox"/> Gas Well <input type="checkbox"/> Other <input type="checkbox"/> | |
| 2. Name of Operator XTO Energy, Inc. | |
| 3. Address of Operator 500 W. Illinois, Ste 100 Midland TX 79701 | |
| 4. Well Location Unit Letter 3 L : 2310 feet from the SOUTH line and 600 feet from the WEST line Section 30 Township 23S Range 30E NMPM County Eddy, NM | |
| 11. Elevation (Show whether DR, RKB, RT, GR, etc.) 3088' | |

12. Check Appropriate Box to Indicate Nature of Notice, Report, or Other Data

NOTICE OF INTENTION TO:

PERFORM REMEDIAL WORK ☐ PLUG AND ABANDON ☐
TEMPORARILY ABANDON ☐ CHANGE PLANS ☐
PULL OR ALTER CASING ☐ MULTIPLE COMPL ☐
DOWNHOLE COMMINGLE ☐
CLOSED-LOOP SYSTEM ☐
OTHER: **Pool Change** ☒

SUBSEQUENT REPORT OF:

REMEDIAL WORK ☐ ALTERING CASING ☐
COMMENCE DRILLING OPNS. ☐ P AND A ☐
CASING/CEMENT JOB ☐
OTHER: ☐

13. Describe proposed or completed operations. (Clearly state all pertinent details, and give pertinent dates, including estimated date of starting any proposed work). SEE RULE 19.15.7.14 NMAC.. For Multiple Completions: Attach wellbore diagram of proposed completion or recompletion.

XTO Energy, Inc respectfully requests to change the pool from Nash Draw to Forty-Niner Ridge; Bone Spring, West (96526) pursuant to NMOCD request.

effective 7-21-2017

Spud Date:

Rig Release Date:

I hereby certify that the information above is true and complete to the best of my knowledge and belief.

SIGNATURE *Jessica Bonilla* TITLE **Regulatory Analyst** DATE **01/04/2018**

Type or print name **JESSICA BONILLA** E-mail address: **JESSICA_BONILLA@XTOENERGY.COM** PHONE **432-620-6704**

For State Use Only

APPROVED BY *Raymond Jr. Godang* TITLE **Geologist** DATE **1-5-18**
Conditions of Approval (if any):

District I
1625 N. French Dr., Hobbs, NM 88240
Phone: (575) 393-6161 Fax: (575) 393-0720
District II
811 S. First St., Artesia, NM 88210
Phone: (575) 748-1283 Fax: (575) 748-9720
District III
1000 Rio Brazos Road, Aztec, NM 87410
Phone: (505) 334-6178 Fax: (505) 334-6170
District IV
1220 S. St. Francis Dr., Santa Fe, NM 87505
Phone: (505) 476-3460 Fax: (505) 476-3462

State of New Mexico
Energy, Minerals & Natural Resources Department
OIL CONSERVATION DIVISION
1220 South St. Francis Dr.
Santa Fe, NM 87505

Form C-102
Revised August 1, 2011
Submit one copy to appropriate
District Office

☐ AMENDED REPORT

WELL LOCATION AND ACREAGE DEDICATION PLAT

| | | |
|--|--|--|
| ¹ API Number 30-015-44320 | ² Pool Code 96526 | ³ Pool Name FORTY NINER RIDGE BONE SPRING, WEST |
| ⁴ Property Code 318385 | ⁵ Property Name REMUDA NORTH 30 STATE | |
| ⁷ OGRID NO. 005380 | ⁸ Operator Name XTO ENERGY, INC. | ⁶ Well Number 701H |
| | | ⁹ Elevation 3088' |

¹⁰ Surface Location

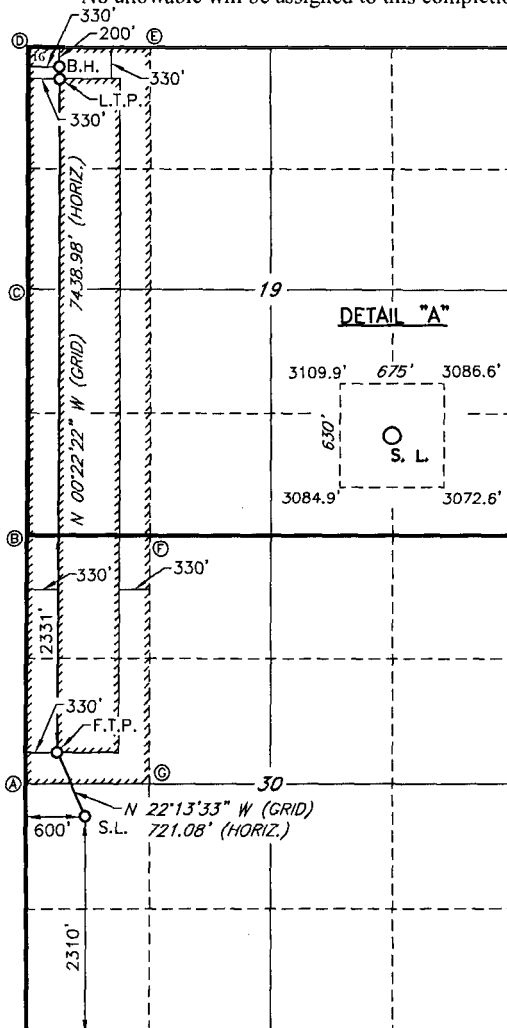
| UL or lot no. | Section | Township | Range | Lot Idn | Feet from the | North/South line | Feet from the | East/West line | County |
|---------------|-----------|------------|------------|---------|---------------|------------------|---------------|----------------|-------------|
| 3 | 30 | 23S | 30E | | 2310 | SOUTH | 600 | WEST | EDDY |

¹¹ Bottom Hole Location If Different From Surface

| UL or lot no. | Section | Township | Range | Lot Idn | Feet from the | North/South line | Feet from the | East/West line | County |
|---------------|-----------|------------|------------|---------|---------------|------------------|---------------|----------------|-------------|
| 1 | 19 | 23S | 30E | | 200 | NORTH | 330 | WEST | EDDY |

| | | | |
|--|-------------------------------|----------------------------------|-------------------------|
| ¹² Dedicated Acres 241.28 | ¹³ Joint or Infill | ¹⁴ Consolidation Code | ¹⁵ Order No. |
|--|-------------------------------|----------------------------------|-------------------------|

No allowable will be assigned to this completion until all interest have been consolidated or a non-standard unit has been approved by the division.



| GEODETIC DATA NAD 27 GRID - NM EAST | GEODETIC DATA NAD 83 GRID - NM EAST |
|--|--|
| BOTTOM HOLE N: 472026.9 - E: 625216.2 LAT: 32.2970680° N LONG: 103.9280926° W | BOTTOM HOLE N: 472086.4 - E: 666399.4 LAT: 32.2971903° N LONG: 103.9285828° W |
| LAST TAKE POINT N: 471896.9 - E: 625217.1 LAT: 32.2967107° N LONG: 103.9280915° W | LAST TAKE POINT N: 471956.5 - E: 666400.2 LAT: 32.2968330° N LONG: 103.9285816° W |
| CORNER DATA NAD 27 GRID - NM EAST | CORNER DATA NAD 83 GRID - NM EAST |
| A: FOUND BRASS CAP "1942" N: 464258.3 - E: 624935.9 | A: FOUND BRASS CAP "1942" N: 464317.7 - E: 666119.3 |
| B: FOUND BRASS CAP "1916" N: 466919.5 - E: 624926.0 | B: FOUND BRASS CAP "1916" N: 466978.9 - E: 666109.3 |
| C: FOUND BRASS CAP "1916" N: 469568.1 - E: 624904.2 | C: FOUND BRASS CAP "1916" N: 469627.6 - E: 666087.4 |
| D: FOUND BRASS CAP "1916" N: 472226.1 - E: 624884.8 | D: FOUND BRASS CAP "1942" N: 472285.7 - E: 666068.0 |
| E: CALCULATED CORNER N: 472229.0 - E: 626232.2 | E: CALCULATED CORNER N: 472288.5 - E: 667415.4 |
| F: CALCULATED CORNER N: 466922.8 - E: 626269.6 | F: CALCULATED CORNER N: 466982.2 - E: 667452.9 |
| G: CALCULATED CORNER N: 464264.1 - E: 626286.0 | G: CALCULATED CORNER N: 464323.5 - E: 667469.4 |
| GEODETIC DATA NAD 27 GRID - NM EAST | GEODETIC DATA NAD 83 GRID - NM EAST |
| FIRST TAKE POINT N: 464589.7 - E: 625264.6 LAT: 32.2766234° N LONG: 103.9280270° W | FIRST TAKE POINT N: 464649.0 - E: 666448.0 LAT: 32.2767458° N LONG: 103.9285164° W |
| SURFACE LOCATION N: 463922.3 - E: 625537.3 LAT: 32.2747860° N LONG: 103.9271528° W | SURFACE LOCATION N: 463981.7 - E: 666720.7 LAT: 32.2749085° N LONG: 103.9276421° W |

¹⁷ OPERATOR CERTIFICATION

I hereby certify that the information contained herein is true and complete to the best of my knowledge and belief, and that this organization either owns a working interest or unleased mineral interest in the land including the proposed bottom hole location or has a right to drill this well at this location pursuant to a contract with an owner of such a mineral or working interest, or to a voluntary pooling agreement or a compulsory pooling order heretofore entered by the division.

Jessica Bonilla 7/20/2017
Signature Date
JESSICA R. BONILLA
Printed Name
JESSICA_BONILLA@XTOENERGY.COM
E-mail Address

¹⁸ SURVEYOR CERTIFICATION

I hereby certify that the well location shown on this plat was plotted from field notes of actual surveys made by me or under my supervision, and that the same is true and correct to the best of my belief.

4-22-2017

Date of Survey

Signature and Seal of Professional Surveyor
Robert M. Howett
19680
Certificate Number