

District I  
1625 N. French Dr., Hobbs, NM 88240  
Phone: (575) 393-6161 Fax: (575) 393-0720  
District II  
811 S. First St., Artesia, NM 88210  
Phone: (575) 748-1283 Fax: (575) 748-9720  
District III  
1000 Rio Brazos Road, Aztec, NM 87410  
Phone: (505) 334-6178 Fax: (505) 334-6170  
District IV  
1220 S. St. Francis Dr., Santa Fe, NM 87505  
Phone: (505) 476-3460 Fax: (505) 476-3462

State of New Mexico  
Energy, Minerals & Natural Resources Department  
OIL CONSERVATION DIVISION  
ARTESIA DISTRICT  
1220 South St. Francis Dr.  
Santa Fe, NM 87505

Form C-102

Revised August 1, 2011

Submit one copy to appropriate

District Office

JAN 05 2018

☐ AMENDED REPORT

RECEIVED

WELL LOCATION AND ACREAGE DEDICATION PLAT

<sup>1</sup> API Number <b>30-015 44620</b>	<sup>2</sup> Pool Code <b>98220</b>	<sup>3</sup> Pool Name <b>PURPLE SAGE; WOLFCAMP (GAS)</b>
<sup>4</sup> Property Code <b>320545</b>	<sup>5</sup> Property Name <b>STERLING STATE 23-27-20 WA</b>	<sup>6</sup> Well Number <b>6H</b>
<sup>7</sup> OGRID No. <b>372098</b>	<sup>8</sup> Operator Name <b>MARATHON OIL PERMIAN LLC</b>	<sup>9</sup> Elevation <b>3181'</b>

<sup>10</sup> Surface Location

UL or lot no.	Section	Township	Range	Lot Idn	Feet from the	North/South line	Feet from the	East/West line	County
0	20	23S	27E		603	SOUTH	1412	EAST	EDDY

<sup>11</sup> Bottom Hole Location If Different From Surface

UL or lot no.	Section	Township	Range	Lot Idn	Feet from the	North/South line	Feet from the	East/West line	County
A	20	23S	27E		330	NORTH	992	EAST	EDDY

<sup>12</sup> Dedicated Acres <b>320.00</b>	<sup>13</sup> Joint or Infill	<sup>14</sup> Consolidation Code	<sup>15</sup> Order No.
--	-------------------------------	----------------------------------	-------------------------

No allowable will be assigned to this completion until all interests have been consolidated or a non-standard unit has been approved by the division.

SECTION 18		SECTION 17		SECTION 16	
SECTION 19		SECTION 20		SECTION 21	
		<p>LAST TAKE POINT/BOTTOM HOLE LOCATION 330' FNL 992' FEL SECTION 20 NAD 83, SPCS NM EAST X580443.55' / Y471677.74' LAT32.29665221N / LON104.20677077W NAD 27, SPCS NM EAST X539261.39' / Y471619.02' LAT32.29653329N / LON104.20627093W</p>		<p>LAST TAKE POINT/BHL</p>	
		<p>FIRST TAKE POINT 330' FSL 988' FEL SECTION 20 NAD 83, SPCS NM EAST X580460.18' / Y467037.21' LAT32.28389595N / LON104.20673470W NAD 27, SPCS NM EAST X539277.92' / Y466978.61' LAT32.28377695N / LON104.20622523W</p>		<p>320.00 ACRE PRODUCING AREA</p>	
		<p>SURFACE HOLE LOCATION 603' FSL 1412' FEL SECTION 20 NAD 83, SPCS NM EAST X580034.87' / Y467313.53' LAT32.28455688N / LON104.20810991W NAD 27, SPCS NM EAST X538852.63' / Y467254.93' LAT32.2845379N / LON104.20761037W</p>		<p>SHL</p>	
SECTION 19		SECTION 20		SECTION 21	
SECTION 30		SECTION 29		SECTION 28	
<p>CORNER COORDINATES NAD 83, SPCS NM EAST A - X: 578789.62' / Y: 472010.44' B - X: 581435.11' / Y: 472006.12' C - X: 581448.80' / Y: 466700.36' D - X: 578813.90' / Y: 466718.61'</p>		<p>CORNER COORDINATES NAD 27, SPCS NM EAST A - X: 537607.50' / Y: 471951.73' B - X: 540252.94' / Y: 471947.38' C - X: 540266.32' / Y: 466641.76' D - X: 537631.66' / Y: 466660.04'</p>		<p>1412' 988' 987'</p>	

**<sup>17</sup> OPERATOR CERTIFICATION**  
I hereby certify that the information contained herein is true and complete in the best of my knowledge and belief, and that this organization either owns a working interest or unleased mineral interest in the land including the proposed bottom hole location or has a right to drill this well at this location pursuant to a contract with an owner of such a mineral or working interest, or to a voluntary pooling agreement or a compulsory pooling order heretofore entered by the division.

*Jennifer Van Curen* 1/4/17  
Signature Date

Jennifer Van Curen  
Printed Name

jvancuren@marathonoil.com  
E-mail Address

**<sup>18</sup> SURVEYOR CERTIFICATION**  
I hereby certify that the well location shown on this plat was plotted from field notes of actual surveys made by me or under my supervision, and that the same is true and correct to the best of my belief.

JANUARY 2, 2018  
Date of Survey

Signature and Seal of Professional Surveyor

*Lloyd P. Short*  
Certificate Number

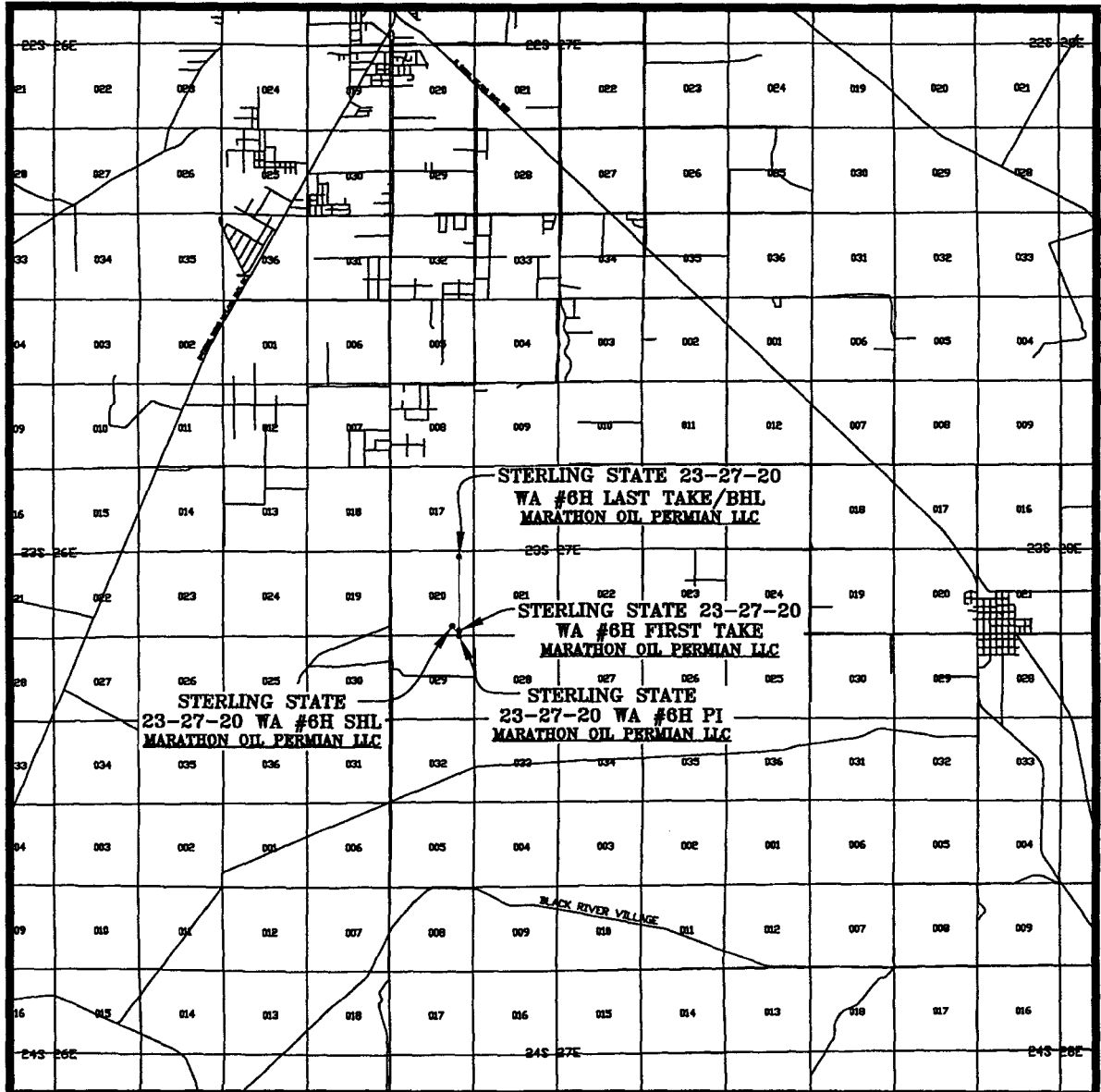
LLOYD P. SHORT 21653  
NEW MEXICO PROFESSIONAL SURVEYOR

1-5-2018  
1-8-2018 to Sean

SCALE: 1" = 2000'  
CONTOUR INTERVAL = 5'

PREPARED BY:  
R-SQUARED GLOBAL, LLC  
1309 LOUISVILLE AVENUE, MONROE, LA 71201  
318-323-6900 OFFICE  
JOB No. R3771\_004

# VICINITY MAP



SEC. 20 TWP. 23-S RGE. 27-E

SURVEY: N.M.P.M.

COUNTY: EDDY

DESCRIPTION: 603' FSL & 1412' FEL

ELEVATION: 3181'

OPERATOR: MARATHON OIL PERMIAN LLC

LEASE: STERLING STATE 23-27-20

U.S.G.S. TOPOGRAPHIC MAP: OTIS, N.M.

SCALE: 1" = 2 MILES

PREPARED BY:  
R-SQUARED GLOBAL, LLC  
1309 LOUISVILLE AVENUE, MONROE, LA 71201  
318-323-6900 OFFICE  
JOB No. R3771\_004