

District I
1625 N. French Dr., Hobbs, NM 88240
Phone: (575) 393-6161 Fax: (575) 393-0720
District II
811 S. First St., Artesia, NM 88210
Phone: (575) 748-1283 Fax: (575) 748-9720
District III
1000 Rio Brazos Road, Aztec, NM 87410
Phone: (505) 334-6178 Fax: (505) 334-6170
District IV
1220 S. St. Francis Dr., Santa Fe, NM 87505
Phone: (505) 476-3460 Fax: (505) 476-3462

State of New Mexico
Energy, Minerals & Natural Resources Department
OIL CONSERVATION DIVISION
1220 South St. Francis Dr.
Santa Fe, NM 87505

Form C-102
Revised August 1, 2011
Submit one copy to appropriate District Office

ARTESIA DISTRICT
JAN 16 2018 AMENDED REPORT

WELL LOCATION AND ACREAGE DEDICATION PL

¹ API Number 30-015-44628	² Pool Code 98220	³ Pool Name PURPLE SAGE; WOLFCAMP
⁴ Property Code 320616	⁵ Property Name GRAVEL GRINDER FEE 23-28-18 WA	⁶ Well Number 5H
⁷ OGRID No. 372098	⁸ Operator Name MARATHON OIL PERMIAN LLC	⁹ Elevation 3080'

¹⁰ Surface Location

UL or lot no.	Section	Township	Range	Lot Idn	Feet from the	North/South line	Feet from the	East/West line	County
M (LOT 4)	18	T23S	R28E		353	SOUTH	1295	WEST	EDDY

¹¹ Bottom Hole Location If Different From Surface

UL or lot no.	Section	Township	Range	Lot Idn	Feet from the	North/South line	Feet from the	East/West line	County
D (LOT 1)	18	T23S	R28E		330	NORTH	1238	WEST	EDDY

¹² Dedicated Acres	¹³ Joint or Infill	¹⁴ Consolidation Code	¹⁵ Order No.
317.40			

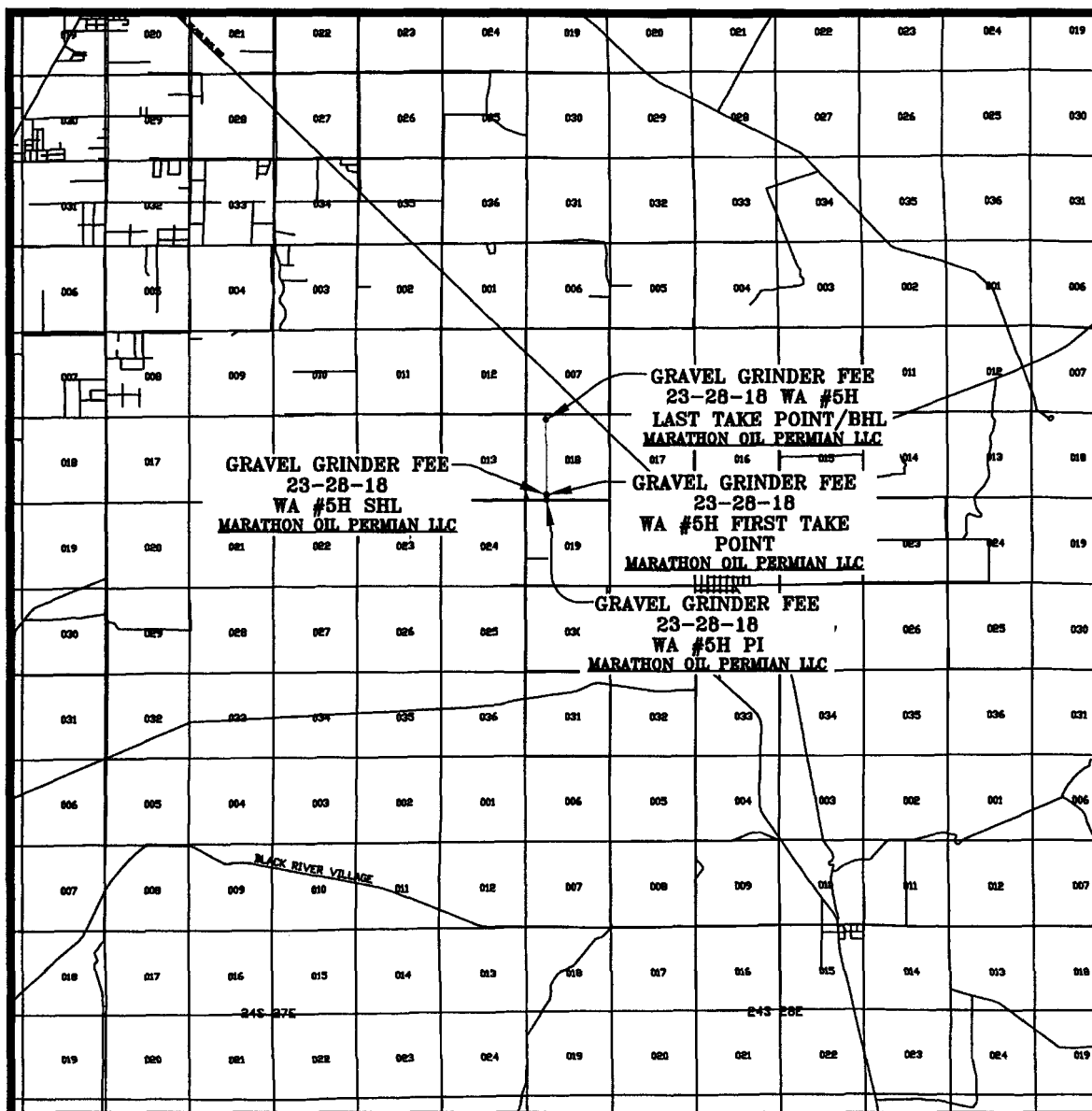
No allowable will be assigned to this completion until all interests have been consolidated or a non-standard unit has been approved by the division.

<p>¹⁶</p> <p>CORNER COORDINATES NAD 83, SPCS NM EAST A - Y: 477528.37' / X: 602595.57' B - Y: 477508.83' / X: 605148.50' C - Y: 472208.49' / X: 605187.51' D - Y: 472198.23' / X: 602542.35'</p> <p>CORNER COORDINATES NAD 27, SPCS NM EAST A - Y: 477469.22' / X: 561413.20' B - Y: 477449.65' / X: 563966.09' C - Y: 472149.44' / X: 564004.98' D - Y: 472139.21' / X: 561359.86'</p>		<p>¹⁷ OPERATOR CERTIFICATION I hereby certify that the information contained herein is true and complete to the best of my knowledge and belief, and that this organization either owns a working interest or unleased mineral interest in the land including the proposed bottom hole location or has a right to drill this well at this location pursuant to a contract with an owner of such a mineral or working interest, or to a voluntary pooling agreement or a compulsory pooling order heretofore entered by the division.</p> <p>Signature: <i>Melissa Szudera</i> Date: 01/12/2018 Printed Name: Melissa Szudera E-mail Address: mszudera@marathonoil.com</p>
<p>¹⁸ SURVEYOR CERTIFICATION I hereby certify that the well location shown on this plat was plotted from field notes of actual surveys made by me or under my supervision, and that the same is true and correct to the best of my belief.</p> <p>JANUARY 11, 2018 Date of Survey Signature and Seal of Professional Surveyor: <i>Lloyd P. Short</i></p> <p>Certificate Number: LLOYD P. SHORT 21653</p>		

SCALE: 1" = 2000'
CONTOUR INTERVAL = 5'

PREPARED BY:
R-SQUARED GLOBAL, LLC
1309 LOUISVILLE AVENUE, MONROE, LA 71201
318-323-6900 OFFICE
JOB No. R3813_002

VICINITY MAP



SEC. 18 TWP. 23-S RGE. 28-E
 SURVEY: N.M.P.M.
 COUNTY: EDDY
 DESCRIPTION: 353' FSL & 1295' FWL
 ELEVATION: 3080'
 OPERATOR: MARATHON OIL PERMIAN LLC
 LEASE: GRAVEL GRINDER FEE 23-28-18
 U.S.G.S. TOPOGRAPHIC MAP: OTIS, N.M.

SCALE: 1" = 2 MILES

PREPARED BY:
 R-SQUARED GLOBAL, LLC
 1309 LOUISVILLE AVENUE, MONROE, LA 71201
 318-323-6900 OFFICE
 JOB No. R3813_002