

NM OIL CONSERVATION ARTESIA DISTRICT

DISTRICT I
1625 N. French Dr., Hobbs, NM 88240
Phone: (505) 393-6161 Fax: (505) 393-0720
DISTRICT II
811 S. First St., Artesia, NM 88210
Phone: (505) 748-1283 Fax: (505) 748-9720
DISTRICT III
1000 Rio Brazos Road, Aztec, NM 87410
Phone: (505) 334-6178 Fax: (505) 334-6170
DISTRICT IV
1220 S. St. Francis Dr., Santa Fe, NM 87505
Phone: (505) 476-3460 Fax: (505) 476-3462

State of New Mexico
Energy, Minerals & Natural Resources Department
OIL CONSERVATION DIVISION
RECEIVED 1220 South St. Francis Dr.
Santa Fe, New Mexico 87505

Form C-102
Revised August 1, 2011
Submit one copy to appropriate
District Office

AMENDED REPORT

WELL LOCATION AND ACREAGE DEDICATION PLAT

| | | |
|-----------------------------------|-------------------------------------------------------|-------------------------------------------|
| API Number 30-015-44270 | Pool Code 98220 | Pool Name PURPLE SAGE; WOLFCAMP |
| Property Code 318086 | Property Name OGDEN 20509 32-29 FEDERAL COM | Well Number 8H |
| OGRID No. 260297 | Operator Name BTA OIL PRODUCERS, LLC | Elevation 3108' |

Surface Location

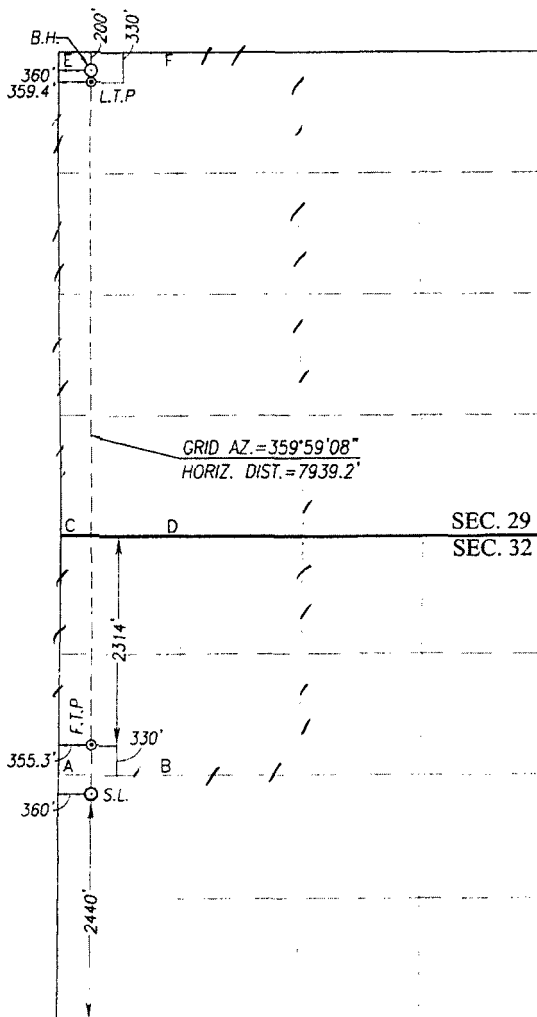
| UL or lot No. | Section | Township | Range | Lot Idn | Feet from the | North/South line | Feet from the | East/West line | County |
|---------------|-----------|-------------|-------------|---------|---------------|------------------|---------------|----------------|-------------|
| L | 32 | 23-S | 28-E | | 2440 | SOUTH | 360 | WEST | EDDY |

Bottom Hole Location If Different From Surface

| UL or lot No. | Section | Township | Range | Lot Idn | Feet from the | North/South line | Feet from the | East/West line | County |
|---------------|-----------|-------------|-------------|---------|---------------|------------------|---------------|----------------|-------------|
| D | 29 | 23-S | 28-E | | 200 | NORTH | 360 | WEST | EDDY |

| Dedicated Acres | Joint or Infill | Consolidation Code | Order No. |
|-----------------|-----------------|--------------------|-----------|
| 480 | | | |

NO ALLOWABLE WILL BE ASSIGNED TO THIS COMPLETION UNTIL ALL INTERESTS HAVE BEEN CONSOLIDATED OR A NON-STANDARD UNIT HAS BEEN APPROVED BY THE DIVISION



SCALE: 1"=2000'

| | |
|-------------------------------------------------------------------------------------------------------------------------------------------------|-------------------------------------------------------------------------------------------------------------------------------------------------|
| GEODETIC COORDINATES NAD 83 NME BOTTOM HOLE LOCATION Y= 466668.5 N X= 608204.7 E LAT.=32.282761° N LONG.=104.116958° W | GEODETIC COORDINATES NAD 27 NME BOTTOM HOLE LOCATION Y= 466609.6 N X= 567022.0 E LAT.=32.282640° N LONG.=104.116462° W |
| LAST TAKE POINT NAD 83 NME Y= 466538.6 N X= 608204.8 E LAT.=32.282403° N LONG.=104.116959° W | LAST TAKE POINT NAD 27 NME Y= 466479.6 N X= 567022.1 E LAT.=32.282283° N LONG.=104.116463° W |

CORNER COORDINATES TABLE

NAD 27 NME

| |
|----------------------------------|
| A - Y= 458876.9 N, X= 566665.6 E |
| B - Y= 458878.7 N, X= 568001.6 E |
| C - Y= 461521.6 N, X= 566688.3 E |
| D - Y= 461518.4 N, X= 568027.7 E |
| E - Y= 466808.6 N, X= 566661.1 E |
| F - Y= 466812.1 N, X= 567978.9 E |

CORNER COORDINATES TABLE

NAD 83 NME

| |
|----------------------------------|
| A - Y= 458935.7 N, X= 607848.5 E |
| B - Y= 458937.5 N, X= 609184.5 E |
| C - Y= 461580.4 N, X= 607871.1 E |
| D - Y= 461577.2 N, X= 609210.5 E |
| E - Y= 466867.5 N, X= 607843.8 E |
| F - Y= 466871.1 N, X= 609161.6 E |

FIRST TAKE POINT
NAD 83 NME
Y= 459266.1 N
X= 608206.6 E
LAT.=32.262412° N
LONG.=104.117000° W

FIRST TAKE POINT
NAD 27 NME
Y= 459207.3 N
X= 567023.7 E
LAT.=32.262292° N
LONG.=104.116505° W

SURFACE LOCATION
NAD 83 NME
Y= 458731.2 N
X= 608206.7 E
LAT.=32.260942° N
LONG.=104.117003° W

SURFACE LOCATION
NAD 27 NME
Y= 458672.4 N
X= 567023.8 E
LAT.=32.260821° N
LONG.=104.116508° W

OPERATOR CERTIFICATION

I hereby certify that the information herein is true and complete to the best of my knowledge and belief, and that this organization either owns a working interest or unleased mineral interest in the land including the proposed bottom hole location or has a right to drill this well at this location pursuant to a contract with an owner of such mineral or working interest, or to a voluntary pooling agreement or a compulsory pooling order heretofore entered by the division.

Kayla McConnell 12/20/2017

Signature Date
KAYLA MCCONNELL
Printed Name
KMCCONNELL@BTAOIL.COM
E-mail Address

SURVEYOR CERTIFICATION

I hereby certify that the well location shown on this plat was plotted from field notes of actual surveys made by me or under my supervision, and that the same is true and correct to the best of my belief.

SEPTEMBER 30, 2016

Date of Survey
Signature & Seal of Professional Surveyor:

Ronald J. Eidson 11/14/2016
Certificate Number Gary G. Eidson 12641
Ronald J. Eidson 3239
ACK REL. W.O. 16110722 JWSC W.O. 1613.0896