

# NM OIL CONSERVATION

ARTESIA DISTRICT

State of New Mexico

Energy, Minerals & Natural Resources Department

OIL CONSERVATION DIVISION

RECEIVED 1220 South St. Francis Dr.

Santa Fe, New Mexico 87505

Form C-102

Revised August 1, 2011

Submit one copy to appropriate District Office

AMENDED REPORT

DISTRICT I  
1625 N. French Dr., Hobbs, NM 88240  
Phone: (575) 393-6161 Fax: (575) 393-0720

DISTRICT II  
811 S. First St., Artesia, NM 88210  
Phone: (575) 748-1283 Fax: (575) 748-9720

DISTRICT III  
1000 Rio Brazos Road, Aztec, NM 87410  
Phone: (505) 334-6178 Fax: (505) 334-6170

DISTRICT IV  
1220 S. St. Francis Dr., Santa Fe, NM 87505  
Phone: (505) 476-3460 Fax: (505) 476-3462

## WELL LOCATION AND ACREAGE DEDICATION PLAT

API Number 30-015-44339	Pool Code 98220	Pool Name PURPLE SAGE;WOLFCAMP
Property Code 318086	Property Name OGDEN 20509 32-29 FEDERAL COM	Well Number 5H
OGRID No. 260297	Operator Name BTA OIL PRODUCERS, LLC	Elevation 3107'

### Surface Location

UL or lot No.	Section	Township	Range	Lot Idn	Feet from the	North/South line	Feet from the	East/West line	County
F	32	23-S	28-E		2472	NORTH	1357	WEST	EDDY

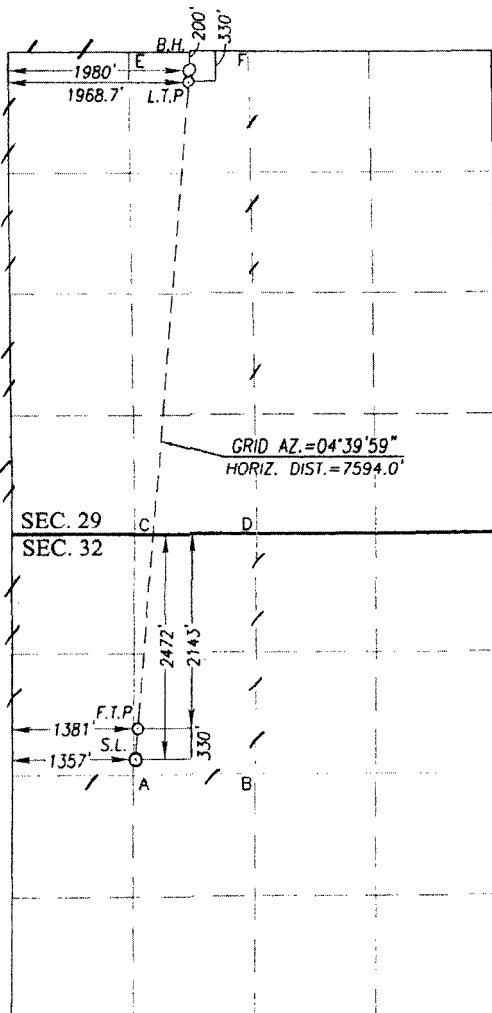
### Bottom Hole Location If Different From Surface

UL or lot No.	Section	Township	Range	Lot Idn	Feet from the	North/South line	Feet from the	East/West line	County
C	29	23-S	28-E		200	NORTH	1980	WEST	EDDY

Dedicated Acres	Joint or Infill	Consolidation Code	Order No.
480			

NO ALLOWABLE WILL BE ASSIGNED TO THIS COMPLETION UNTIL ALL INTERESTS HAVE BEEN CONSOLIDATED OR A NON-STANDARD UNIT HAS BEEN APPROVED BY THE DIVISION

SCALE: 1"=2000'



GEODETIC COORDINATES  
NAD 83 NME  
BOTTOM HOLE LOCATION  
Y= 466672.9 N  
X= 609824.4 E  
LAT.=32.282763° N  
LONG.=104.111717° W

GEODETIC COORDINATES  
NAD 27 NME  
BOTTOM HOLE LOCATION  
Y= 466613.9 N  
X= 568641.6 E  
LAT.=32.282643° N  
LONG.=104.111221° W

GEODETIC COORDINATES  
NAD 83 NME  
LAST TAKE POINT  
Y= 466542.9 N  
X= 609813.8 E  
LAT.=32.282406° N  
LONG.=104.111752° W

GEODETIC COORDINATES  
NAD 27 NME  
LAST TAKE POINT  
Y= 466483.9 N  
X= 568631.0 E  
LAT.=32.282286° N  
LONG.=104.111256° W

### CORNER COORDINATES TABLE

NAD 27 NME

A - Y= 458878.7 N, X= 568001.6 E  
B - Y= 458880.6 N, X= 569337.6 E  
C - Y= 461518.4 N, X= 568027.7 E  
D - Y= 461515.2 N, X= 569367.1 E  
E - Y= 466812.1 N, X= 567978.9 E  
F - Y= 466815.6 N, X= 569296.7 E

### CORNER COORDINATES TABLE

NAD 83 NME

A - Y= 458937.5 N, X= 609184.5 E  
B - Y= 458939.3 N, X= 610520.5 E  
C - Y= 461577.2 N, X= 609210.5 E  
D - Y= 461574.1 N, X= 610550.0 E  
E - Y= 466871.1 N, X= 609161.6 E  
F - Y= 466874.6 N, X= 610479.4 E

### FIRST TAKE POINT

NAD 83 NME

Y= 459434.7 N  
X= 609233.6 E  
LAT.=32.262870° N  
LONG.=104.113677° W

### SURFACE LOCATION

NAD 83 NME

Y= 459105.8 N  
X= 609206.7 E  
LAT.=32.261966° N  
LONG.=104.113766° W

### FIRST TAKE POINT

NAD 27 NME

Y= 459375.9 N  
X= 568050.7 E  
LAT.=32.262749° N  
LONG.=104.113181° W

### SURFACE LOCATION

NAD 27 NME

Y= 459047.1 N  
X= 568023.8 E  
LAT.=32.261846° N  
LONG.=104.113270° W

### OPERATOR CERTIFICATION

I hereby certify that the information herein is true and complete to the best of my knowledge and belief, and that this organization either owns a working interest or unleased mineral interest in the land including the proposed bottom hole location or has a right to drill this well at this location pursuant to a contract with an owner of such mineral or working interest, or to a voluntary pooling agreement or a compulsory pooling order heretofore entered by the division.

Kayla McConnell 12/20/2017  
Signature Date

KAYLA MCCONNELL

Printed Name

KMCCONNELL@BTAOIL.COM

E-mail Address

### SURVEYOR CERTIFICATION

I hereby certify that the well location shown on this plat was plotted from field notes of actual surveys made by me or under my supervision, and that the same is true and correct to the best of my belief.

NOVEMBER 30, 2016

Date of Survey

Signature & Seal of Professional Surveyor:

Ronald J. Eidson 02/08/2017  
Certificate Number 3239  
Gary G. Eidson 12641  
Ronald J. Eidson 3239

ACK REL. W.O.:16110872

JWSC W.O.: 17.13.0088