

NM OIL CONSERVATION

ARTESIA DISTRICT

State of New Mexico

Energy, Minerals & Natural Resources Department

OIL CONSERVATION DIVISION

RECEIVED 1220 South St. Francis Dr.
Santa Fe, New Mexico 87505

Form C-102

Revised August 1, 2011

Submit one copy to appropriate
District Office

DISTRICT I
1625 N. French Dr., Hobbs, NM 88240
Phone: (575) 393-6161 Fax: (575) 393-0720
DISTRICT II
811 S. First St., Artesia, NM 88210
Phone: (575) 748-1283 Fax: (575) 748-9720
DISTRICT III
1000 Rio Brazos Road, Aztec, NM 87410
Phone: (505) 334-6178 Fax: (505) 334-6170
DISTRICT IV
1220 S. St. Francis Dr., Santa Fe, NM 87505
Phone: (505) 476-3460 Fax: (505) 476-3462

AMENDED REPORT

WELL LOCATION AND ACREAGE DEDICATION PLAT

API Number 30-015-44341	Pool Code 98220	Pool Name PURPLE SAGE;WOLFCAMP
Property Code 318086	Property Name OGDEN 20509 32-29 FEDERAL COM	Well Number 7H
OGRID No. 260297	Operator Name BTA OIL PRODUCERS, LLC	Elevation 3108'

Surface Location

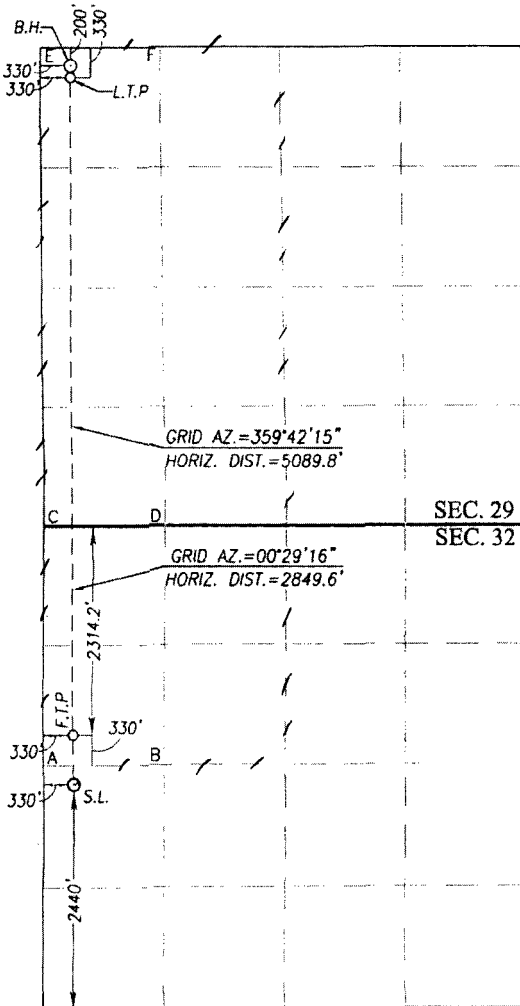
UL or lot No.	Section	Township	Range	Lot Idn	Feet from the	North/South line	Feet from the	East/West line	County
L	32	23-S	28-E		2440	SOUTH	330	WEST	EDDY

Bottom Hole Location If Different From Surface

UL or lot No.	Section	Township	Range	Lot Idn	Feet from the	North/South line	Feet from the	East/West line	County
D	29	23-S	28-E		200	NORTH	330	WEST	EDDY

Dedicated Acres	Joint or Infill	Consolidation Code	Order No.
480			

NO ALLOWABLE WILL BE ASSIGNED TO THIS COMPLETION UNTIL ALL INTERESTS HAVE BEEN CONSOLIDATED OR A NON-STANDARD UNIT HAS BEEN APPROVED BY THE DIVISION



SCALE: 1"=2000'

GEODETIC COORDINATES NAD 83 NME	GEODETIC COORDINATES NAD 27 NME
BOTTOM HOLE LOCATION Y= 466668.5 N X= 608174.8 E LAT.=32.282761° N LONG.=104.117055° W	BOTTOM HOLE LOCATION Y= 466609.5 N X= 566992.0 E LAT.=32.282640° N LONG.=104.116559° W
LAST TAKE POINT NAD 83 NME Y= 466538.5 N X= 608175.4 E LAT.=32.282403° N LONG.=104.117054° W	LAST TAKE POINT NAD 27 NME Y= 466479.6 N X= 566992.7 E LAT.=32.282283° N LONG.=104.116558° W

CORNER COORDINATES TABLE NAD 27 NME

A - Y= 458876.9 N, X= 566665.6 E
B - Y= 458878.7 N, X= 568001.6 E
C - Y= 461521.6 N, X= 566688.3 E
D - Y= 461518.4 N, X= 568027.7 E
E - Y= 466808.6 N, X= 566661.1 E
F - Y= 466812.1 N, X= 567978.9 E

CORNER COORDINATES TABLE NAD 83 NME

A - Y= 458935.7 N, X= 607848.5 E
B - Y= 458937.5 N, X= 609184.5 E
C - Y= 461580.4 N, X= 607871.1 E
D - Y= 461577.2 N, X= 609210.5 E
E - Y= 466867.5 N, X= 607843.8 E
F - Y= 466871.1 N, X= 609161.6 E

FIRST TAKE POINT NAD 83 NME	FIRST TAKE POINT NAD 27 NME
Y= 459266.1 N X= 608181.3 E LAT.=32.262412° N LONG.=104.117082° W	Y= 459207.3 N X= 566998.4 E LAT.=32.262292° N LONG.=104.116587° W
SURFACE LOCATION NAD 83 NME	SURFACE LOCATION NAD 27 NME
Y= 458731.0 N X= 608176.8 E LAT.=32.260942° N LONG.=104.117100° W	Y= 458672.3 N X= 566993.9 E LAT.=32.260821° N LONG.=104.116605° W

OPERATOR CERTIFICATION

I hereby certify that the information herein is true and complete to the best of my knowledge and belief, and that this organization either owns a working interest or unleased mineral interest in the land including the proposed bottom hole location or has a right to drill this well at this location pursuant to a contract with an owner of such mineral or working interest, or to a voluntary pooling agreement or a compulsory pooling order heretofore entered by the division.

Kayla McConnell

12/20/2017

Signature Date

KAYLA MCCONNELL

Printed Name

KMCCONNELL@BTAOIL.COM

E-mail Address

SURVEYOR CERTIFICATION

I hereby certify that the well location shown on this plat was plotted from field notes of actual surveys made by me or under my supervision, and that the same is true and correct to the best of my belief.

SEPTEMBER 30, 2016

Date of Survey

Signature & Seal of Professional Surveyor:

Ronald J. Eidson

Certificate Number Gary G. Eidson 12641

Ronald J. Eidson 3239

ACK REL W.O. 16130899 JWSC W.O. 17.13.0072