

District I
1625 N. French Dr., Hobbs, NM 88240
District II
1301 W. Grand Avenue, Artesia, NM 88210
District III
1000 Rio Brazos Rd., Aztec, NM 87410
District IV
1220 S. St. Francis Dr., Santa Fe, NM 87505

State of New Mexico
Energy, Minerals & Natural Resources
OIL CONSERVATION DIVISION
1220 South St. Francis Dr.
Santa Fe, NM 87505

Form C-102
Revised October 12, 2005
Submit to Appropriate District Office
State Lease - 4 Copies
Fee Lease - 3 Copies

AS DRILLED

RECEIVED

☐ AMENDED REPORT

WELL LOCATION AND ACREAGE DEDICATION PLAT

¹ API Number 30-015-44494		Pool Code 3250		³ Pool Name Atoka, Glorieta-Yeso	
⁴ Property Code 319773		⁵ Property Name TERRY 14 G			⁶ Well Number 3
⁷ OGRID No. 277558		⁸ Operator Name LIME ROCK RESOURCES II-A, L.P.			⁹ Elevation 3312' GL

¹⁰ Surface Location

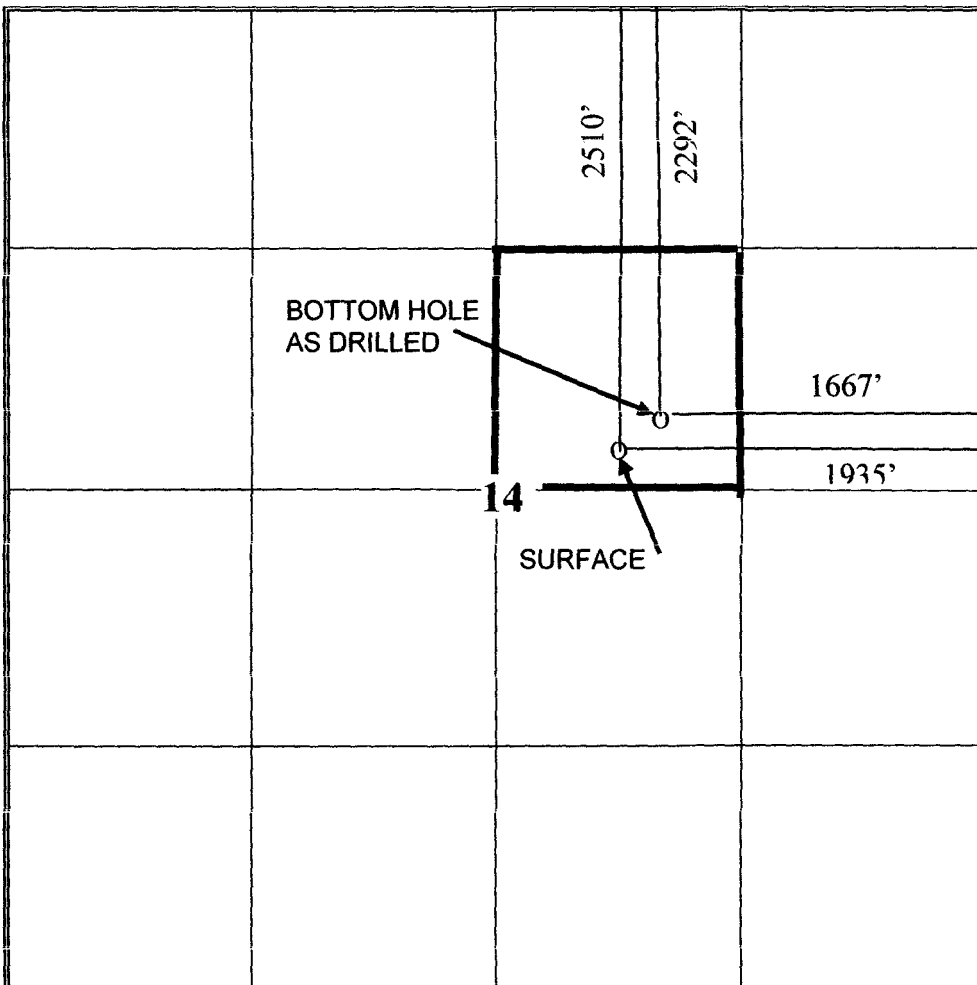
UL or lot no. G	Section 14	Township 18-S	Range 26-E	Lot 1dn	Feet from the 2510	North/South line NORTH	Feet from the 1935	East/West line EAST	County EDDY
--------------------	---------------	------------------	---------------	---------	-----------------------	---------------------------	-----------------------	------------------------	----------------

¹¹ Bottom Hole Location If Different From Surface

UL or lot no. G	Section 14	Township 18-S	Range 26-E	Lot 1dn	Feet from the 2292	North/South line NORTH	Feet from the 1667	East/West line EAST	County EDDY
--------------------	---------------	------------------	---------------	---------	-----------------------	---------------------------	-----------------------	------------------------	----------------

¹² Dedicated Acres 40	¹³ Joint or Infill	¹⁴ Consolidation Code	¹⁵ Order No.
-------------------------------------	-------------------------------	----------------------------------	-------------------------

2636.00'



¹⁷ **OPERATOR CERTIFICATION**

I hereby certify that the information contained herein is true and complete to the best of my knowledge and belief, and that this organization either owns a working interest or unleased mineral interest in the land including the proposed bottom hole location or has a right to drill this well at this location pursuant to a contract with an owner of such a mineral or working interest, or to a voluntary pooling agreement or a compulsory pooling heretofore entered by the division.

Signature: *Mike Pippin* Date: 1/27/18

Mike Pippin
Printed Name

¹⁸ **SURVEYOR CERTIFICATION**

I hereby certify that the well location shown on this plat was plotted from field notes of actual surveys made by me or under my supervision, and that the same is true and correct to the best of my belief.

10/12/17

Date of Survey

Signature and Seal of Professional Surveyor:

Filmon F. Jaramillo

12797 Certificat Number