

DISTRICT I
1625 N. French Dr., Hobbs, NM 88240
Phone (505) 393-8161 Fax: (505) 393-0720
DISTRICT II
811 S. First St., Las Cruces, NM 88210
Phone (505) 748-1288 Fax: (505) 534-6170
DISTRICT III
1000 Rio Brazos Rd., Aztec, NM 87410
Phone (505) 334-6175 Fax: (505) 334-6170
DISTRICT IV
1226 S. St. Francis Dr., Santa Fe, NM 87505
Phone (505) 476-3460 Fax: (505) 476-3462

State of New Mexico
Energy, Minerals and Natural Resources Department

Form C-102
Revised August 1, 2011
Submit one copy to appropriate
District Office

OIL CONSERVATION DIVISION
1226 South St. Francis Dr.
Santa Fe, New Mexico 87505

WELL LOCATION AND ACREAGE DEDICATION PLAT

☐ AMENDED REPORT

API Number 30-015-44725	Pool Code 97565	Pool Name N. SEVEN RIVERS; GLORIETA-YESO
Property Code 320768	Property Name SOUTH BOYD FEDERAL COM	Well Number 22H
GRID No. 371755	Operator Name PERCUSSION PETROLEUM OPERATING, LLC	Elevation 3534'

Surface Location

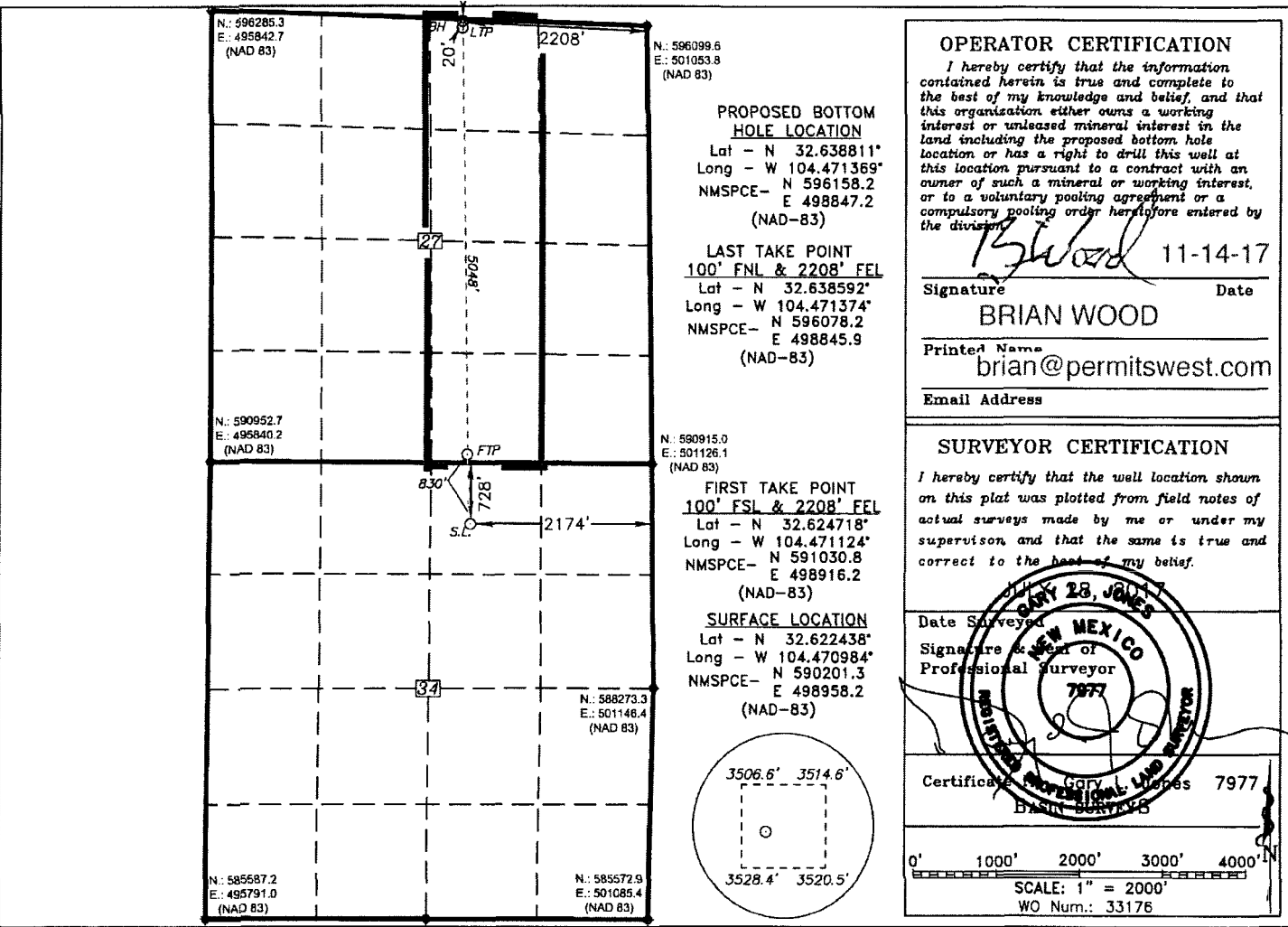
UL or lot No.	Section	Township	Range	Lot Idn	FEET from the	North/South line	FEET from the	East/West line	County
B	34	19 S	25 E		728	NORTH	2174	EAST	EDDY

Bottom Hole Location If Different From Surface

UL or lot No.	Section	Township	Range	Lot Idn	FEET from the	North/South line	FEET from the	East/West line	County
B	27	19 S	25 E		20	NORTH	2208	EAST	EDDY

Dedicated Acres 160	Joint or Infill	Consolidation Code C	Order No.
------------------------	-----------------	-------------------------	-----------

NO ALLOWABLE WILL BE ASSIGNED TO THIS COMPLETION UNTIL ALL INTERESTS HAVE BEEN CONSOLIDATED
OR A NON-STANDARD UNIT HAS BEEN APPROVED BY THE DIVISION



N SP/NSL Required RUP 2-20-18

Operator Name: PERCUSSION PETROLEUM OPERATING LLC

Well Name: SOUTH BOYD FEDERAL COM

Well Number: 22H

	NS-Foot	NS Indicator	EW-Foot	EW Indicator	Twsp	Range	Section	Aliquot/Lot/Tract	Latitude	Longitude	County	State	Meridian	Lease Type	Lease Number	Elevation	MD	TVD
PPP Leg #1	264 0	FSL	228 1	FEL	20S	25E	27	Aliquot SWNE	32.6316	- 104.4712 62	EDD Y	NEW MEXI CO	NEW MEXI CO	F	FEE	705	572 6	282 9
EXIT Leg #1	20	FNL	220 8	FEL	19S	25E	27	Aliquot NWNE	32.63881 1	- 104.4713 69	EDD Y	NEW MEXI CO	NEW MEXI CO	F	FEE	705	834 1	282 9
BHL Leg #1	20	FNL	220 8	FEL	19S	25E	27	Aliquot NWNE	32.63881 1	- 104.4713 69	EDD Y	NEW MEXI CO	NEW MEXI CO	F	FEE	705	834 1	282 9