

**NM OIL CONSERVATION**  
ARTESIA DISTRICT

FEB 15 2018

Form C-102

District I  
1623 N French Dr., Hobbs, NM 88240  
Phone: (575) 393-6161 Fax: (575) 393-0720  
District II  
811 S. First St., Artesia, NM 88210  
Phone: (575) 748-1283 Fax: (575) 748-9720  
District III  
1000 Rio Bravo Road, Aztec, NM 87410  
Phone: (505) 334-6178 Fax: (505) 334-6170  
District IV  
1220 S. St. Francis Dr., Santa Fe, NM 87505  
Phone: (505) 476-3460 Fax: (505) 476-3462

State of New Mexico  
Energy, Minerals & Natural Resources Department  
OIL CONSERVATION DIVISION  
1220 South St. Francis Dr.  
Santa Fe, NM 87505

RECEIVED  
Revised August 1, 2011  
Submit one copy to appropriate  
District Office

☐ AMENDED REPORT

**WELL LOCATION AND ACREAGE DEDICATION PLAT**

API Number <b>30-015-44702</b>	Pool Code <b>96473</b>	Pool Name <b>Pierce Crossing Bone Springs, East</b>
Property Code <b>320767</b>	Property Name <b>CORRAL FLY "35-26" FEDERAL COM</b>	Well Number <b>21H</b>
OGRID No <b>16696</b>	Operator Name <b>OXY USA INC.</b>	Elevation <b>3016.0'</b>

**Surface Location**

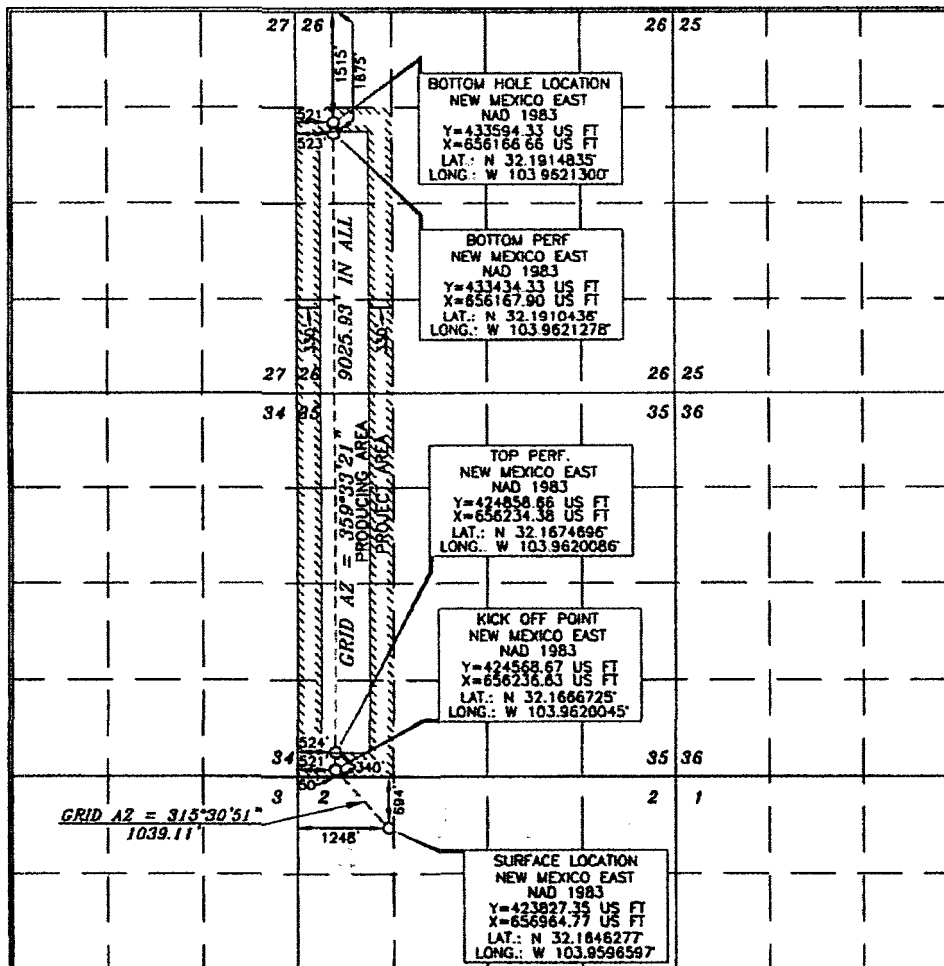
UL or lot no	Section	Township	Range	Lot Id	Feet from the	North/South line	Feet from the	East/West line	County
4	2	25 SOUTH	29 EAST, N.M.P.M.		694'	NORTH	1248'	WEST	EDDY

**Bottom Hole Location If Different From Surface**

UL or lot no.	Section	Township	Range	Lot Id	Feet from the	North/South line	Feet from the	East/West line	County
E	26	24 SOUTH	29 EAST, N.M.P.M.		1515'	NORTH	521'	WEST	EDDY

Dedicated Acres	Joint or Infill	Consolidation Code	Order No.
<b>280</b>	<b>Y</b>		

No allowable will be assigned to this completion until all interests have been consolidated or a non-standard unit has been approved by the division.



**OPERATOR CERTIFICATION**

I hereby certify that the information contained herein is true and complete to the best of my knowledge and belief, and that this organization either owns a working interest or retained mineral interest in the land including the proposed bottom hole location or has a right to drill this well at this location pursuant to a contract with an owner of such a mineral or working interest, or to a voluntary pooling agreement or a compulsory pooling order heretofore entered by the division.

Signature: *David Stewart* Date: **01/14/17**  
Printed Name: **David Stewart SR. Engineer**  
E-mail Address: **dauid.stewart@oxy.com**

**SURVEYOR CERTIFICATION**

I hereby certify that the well location shown on this plat was plotted from **ORIGINAL** surveys made by me or under my supervision and that the same is true and correct to the best of my belief.

Date of Survey: **MAY 15 2017**  
Signature and Seal of Professional Land Surveyor: *Terry J. Asberry*  
Certificate Number: **15079**



U.S. Department of the Interior  
BUREAU OF LAND MANAGEMENT

## Drilling Plan Data Report

02/09/2018

APD ID: 10400020493

Submission Date: 08/22/2017

Highlighted data  
reflects the most  
recent changes

Operator Name: OXY USA INCORPORATED

Well Name: CORRAL FLY 35-26 FEDERAL COM

Well Number: 21H

[Show Final Text](#)

Well Type: OIL WELL

Well Work Type: Drill

### Section 1 - Geologic Formations

Formation ID	Formation Name	Elevation	True Vertical Depth	Measured Depth	Lithologies	Mineral Resources	Producing Formation
1	RUSTLER	3016	342	342	SHALE, DOLOMITE, ANHYDRITE	USEABLE WATER	No
2	SALADO	2149	867	867	SHALE, DOLOMITE, HALITE, ANHYDRITE	OTHER : SALT	No
3	CASTILE	1574	1442	1442	ANHYDRITE	OTHER : salt	No
4	LAMAR	-141	3157	3171	LIMESTONE, SANDSTONE, SILTSTONE	NATURAL GAS, OIL, OTHER : BRINE	No
5	BELL CANYON	-149	3165	3179	SANDSTONE, SILTSTONE	NATURAL GAS, OIL, OTHER : BRINE	No
6	CHERRY CANYON	-1022	4038	4066	SANDSTONE, SILTSTONE	NATURAL GAS, OIL, OTHER : BRINE	No
7	BRUSHY CANYON	-2360	5376	5424	LIMESTONE, SANDSTONE, SILTSTONE	NATURAL GAS, OIL, OTHER : BRINE	No
8	BONE SPRING	-3849	6865	6936	LIMESTONE, SANDSTONE, SILTSTONE	NATURAL GAS, OIL	Yes
9	BONE SPRING 1ST	-4695	7711	7795	LIMESTONE, SANDSTONE, SILTSTONE	NATURAL GAS, OIL	Yes
10	BONE SPRING 2ND	-5076	8092	8180	LIMESTONE, SANDSTONE, SILTSTONE	NATURAL GAS, OIL	Yes

### Section 2 - Blowout Prevention

Pressure Rating (PSI): 5M

Rating Depth: 8916

Equipment: 13-5/8" 5M Annular, Blind Ram, Double Ram

Requesting Variance? YES

Variance request: Request for the use of a flexible choke line from the BOP to Choke Manifold.

**Testing Procedure:** BOP/BOPE will be tested by an independent service company to 250 psi low and the high pressure indicated above per Onshore Order 2 requirements. The System may be upgraded to a higher pressure but still tested to the working pressure listed in the table above. If the system is upgraded all the components installed will be functional and tested. Pipe rams will be operationally checked each 24 hour period. Blind rams will be operationally checked on each trip out of the hole. These checks will be noted on the daily tour sheets. Other accessories to the BOP equipment will include a Kelly cock and floor safety valve (inside BOP) and choke lines and choke manifold. A multibowl or a unionized multibowl wellhead system will be employed. The wellhead and connection to the BOPE will meet all API 6A requirements. The BOP will be tested per Onshore Order #2 after installation on the surface casing which will cover testing requirements for a maximum of