

UNITED STATES
DEPARTMENT OF THE INTERIOR
BUREAU OF LAND MANAGEMENTNMOCD
ArtesiaFORM APPROVED
OMB NO. 1004-0137
Expires: January 31, 2018**SUNDRY NOTICES AND REPORTS ON WELLS**
*Do not use this form for proposals to drill or to re-enter an abandoned well. Use form 3160-3 (APD) for such proposals.*5. Lease Serial No.
NMNM16316

6. If Indian, Allottee or Tribe Name

7. If Unit or CA/Agreement, Name and/or No.

8. Well Name and No.
BITTER LAKE CW FEDERAL 19. API Well No.
30-005-6166210. Field and Pool or Exploratory Area
PECOS SLOPE-ABO

11. County or Parish, State

CHAVES COUNTY COUNTY, NM

SUBMIT IN TRIPLICATE - Other instructions on page 2

1. Type of Well

☐ Oil Well ☒ Gas Well ☐ Other2. Name of Operator
MARATHON OIL CORPORATIONContact: JENNIFER VAN CUREN
E-Mail: jvancuren@marathonoil.com3a. Address
5555 SAN FELIPE ST.
HOUSTON, TX 770563b. Phone No. (include area code)
Ph: 713-629-2500

4. Location of Well (Footage, Sec., T., R., M., or Survey Description)

Sec 24 T8S R24E SESE 1980FNL 660FEL

12. CHECK THE APPROPRIATE BOX(ES) TO INDICATE NATURE OF NOTICE, REPORT, OR OTHER DATA

TYPE OF SUBMISSION	TYPE OF ACTION			
<input type="checkbox"/> Notice of Intent	<input type="checkbox"/> Acidize	<input type="checkbox"/> Deepen	<input type="checkbox"/> Production (Start/Resume)	<input type="checkbox"/> Water Shut-Off
<input checked="" type="checkbox"/> Subsequent Report	<input type="checkbox"/> Alter Casing	<input type="checkbox"/> Hydraulic Fracturing	<input type="checkbox"/> Reclamation	<input type="checkbox"/> Well Integrity
<input type="checkbox"/> Final Abandonment Notice	<input type="checkbox"/> Casing Repair	<input type="checkbox"/> New Construction	<input type="checkbox"/> Recomplete	<input type="checkbox"/> Other
	<input type="checkbox"/> Change Plans	<input checked="" type="checkbox"/> Plug and Abandon	<input type="checkbox"/> Temporarily Abandon	
	<input type="checkbox"/> Convert to Injection	<input type="checkbox"/> Plug Back	<input type="checkbox"/> Water Disposal	

13. Describe Proposed or Completed Operation: Clearly state all pertinent details, including estimated starting date of any proposed work and approximate duration thereof. If the proposal is to deepen directionally or recompleat horizontally, give subsurface locations and measured and true vertical depths of all pertinent markers and zones. Attach the Bond under which the work will be performed or provide the Bond No. on file with BLM/BIA. Required subsequent reports must be filed within 30 days following completion of the involved operations. If the operation results in a multiple completion or recompletion in a new interval, a Form 3160-4 must be filed once testing has been completed. Final Abandonment Notices must be filed only after all requirements, including reclamation, have been completed and the operator has determined that the site is ready for final inspection.

1-26-18 MIRU Pulling unit, POOH w/ tbg (tagged for fill where was documented perfs where.), No plug was above the perfs. SDON called BLM discussed, was told to set CIBP 50? above top perf and pump 25 Sks cmt on top.

1-29-18 RIH and set plug @ 3445? (50? above top perf of 3495?). No fresh water will pump cement following day.

1-30-18 RU cmt truck pumped 25 sx class cmt on top of plug. POOH w/ tbg waited 4 hrs for cmt to set, RIH and tagged cmt @ 3065?. RU pressure truck and pressure test csg. Pumped 10 bbls @ 1.5 bpm 500# pressure did not hold. Called BLM advised to run pkr and pressure test up from 1500? 3065? picked up 4.5? AD1 PKR and RIH to 1472? PKR would not set, RIH to 1504? set pkr. Pressure tested from 1504? 3067?, pressure up to 500# held for 10min no bleed off. Unset pkr RIH to 1850? and

NM OIL CONSERVATION
ARTESIA DISTRICT

MAR 01 2018

RECEIVED

Accepted for record - NMOCD

SC 3-1-18

This notice is the property of the BLM and is loaned to you for use only. It is to be returned to the BLM when the work is completed.

14. I hereby certify that the foregoing is true and correct.

Electronic Submission #405724 verified by the BLM Well Information System
For MARATHON OIL CORPORATION, sent to the Roswell
Committed to AFMSS for processing by JENNIFER SANCHEZ on 02/26/2018 ()

Name (Printed/Typed) JENNIFER VAN CUREN

Title SR. REGULATORY COMPLIANCE REP

Signature (Electronic Submission)

Date 02/26/2018

THIS SPACE FOR FEDERAL OR STATE OFFICE USE

ACCEPTED FOR RECORD

Approved By

Title

FEB 26 2018

Date

Conditions of approval, if any, are attached. Approval of this notice does not warrant or certify that the applicant holds legal or equitable title to those rights in the subject lease which would entitle the applicant to conduct operations thereon.

Office

BUREAU OF LAND MANAGEMENT

Title 18 U.S.C. Section 1001 and Title 43 U.S.C. Section 1212, make it a crime for any person knowingly and willfully to make to any department or agency of the United States any false, fictitious or fraudulent statements or representations as to any matter within its jurisdiction.

(Instructions on page 2)

**** OPERATOR-SUBMITTED ** OPERATOR-SUBMITTED ** OPERATOR-SUBMITTED ****

Additional data for EC transaction #405724 that would not fit on the form

32. Additional remarks, continued

pumped balance plug from 1850?-1750?. Circd hole w/ 10% brine, POOH w/ tbg.

1-31-18 RIH w/ tbg, tagged plug at 1536?, called BLM with situation. Advised to pull pkr to 947? and set it and pressure up on csg from 947? to 1536? held ok. Test above pkr and leaked water, started coming out of surface csg. Unset Pkr and pin point hole in csg @/ between 96?-128?. POOH and laid down pkr. RIH w/ tbg to 947? pumped 225 sx cmt from 947? to surface. Close BOP and keep pumping until cmt out of surface valve. Called BLM and sent picture of cmt at surface in 4-1/2?? csg, BLM approved of pictures and said everything okay. RDMO pulling unit.

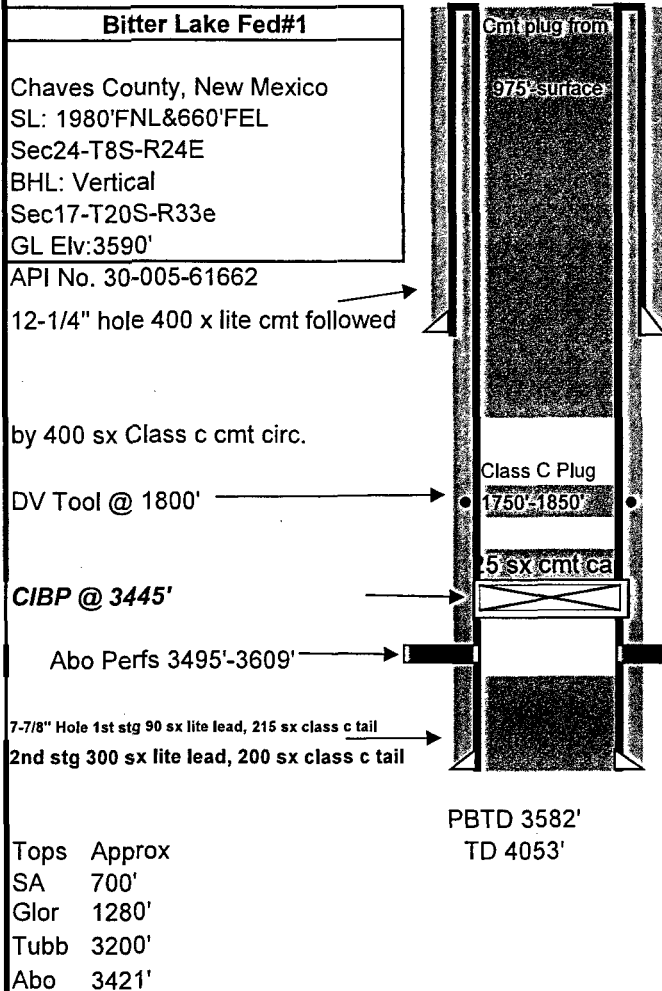
2-1-18 Welder cut 8-5/8?? well head and 4-1/2?? csg and welded dry hole marker on top of plate on top of 8-5/8?? csg. Coverd up cellar, cut all anchors, cleaned location.

2-2-18 Dragged and cleaned disturbed area. Move tubing to yard.

Reclamation will be completed and a subsequent sundry will be submitted when complete.

Bitter Lake Federal CW #1 Current WBD

PROPOSED VERTICAL WELLBORE DIAGRAM



Casing					
Size	No Jts	Wt	Grade/Thrds	Depth Set (MD)	Depth Set (TVD)
8-5/8"		24	J-55	923'	923'
4-1/2"		9.5	J-55	3804'	3804'

Packer Assembly	
Abo Perfs	
3495'-3609'	
14 holes	

Production Assembly			
Description	Length	Depth Set (MD)	Depth Set (TVD)
		0.00'	
		0.00'	
		0.00'	
		0.00'	
		0.00'	
		0.00'	

Vertical Completion Description	
Completed 9-17-82	
Perfed Abo 3495'-3609'	
Frac'd : 30000 gal 2% 37,500 # 20/40	
POF 560 MCFPD 9-23-82	

7/19/95 TP 875/ CP 850 Well would not blow down after 2hrs. Killed well with 85 Bbl FW;
 TOO H w/ 3453' tbg set CIBP @ 3450' w/wireline PT to 500# for 2 hrs; pressure to 475#
 5% drop suspect cold water the cause bradenhead test good to 500#

WORKOVER REPORT

LEASE AND WELL NAME		FIELD		AFE AMOUNT		DAY		DATE	
Bitter Lake Fed. CW #1						4		1/26/2018	
OPERATION				Wellhead			KB		
PNA									
CASING/LINER		PERFORATIONS		DEPTH		PBTD		CIBP	
ROD DETAIL		TUBING DETAIL				PUMPING UNIT DETAIL			
Size	Count	Jts	Description	Length	Depth	Make	Size	SPM	SL
(5/8")									
(3/4")									
(7/8")									
(1")									
FG									
FG									
SUBS									
PUMP DETAIL									
PR/PRL									
COMMENTS									
Time	REPORT								
	Drove to location , Move in BDS kill truck and Maverick Well Plugging Unit, had no pressure on well rig up on 4 1/2" casing and pumped 60-bbls of water and loaded . Pressure up to 140# pumping 28BPM and went on vacuum after quit pumping, ND well head and NU BOP (well had tubing in the hole) picked up 5-jts								
	2 3/8" tubing and tagged up bottom. POOH laying down the 5-joints and stand back the tubing that was in the hole tallying tubing out. Had a total of 106 - joints								
	of 2 3/8" tubing in the well, end of tubing was at 3453' and with the 5-joints that we picked up to tag bottom was at 3582'. (there was no plug above perfs)								
	Existing Perfs are from 3495' to 3609' , shut in well and SDOW.								
	Discuss with BLM and will set CIBP 50' above perfs , pump 25-sacks of cement on top Monday morning.								
							COST DESCRIPTION		
							Pulling Unit	\$1,380	
							Supervision	\$1,300	
							Rental Equip.		
							Trucking	\$1,500	
							Hobbs Annchor		
							DAILY COST	\$4,180	
							CUM COST	\$10,080	
								REPORT BY	
								VAL	

WORKOVER REPORT

[illegible]

Marathon Oil

WORKOVER REPORT

LEASE AND WELL NAME		FIELD		AFE AMOUNT		DAY		DATE	
Bitter Lake Fed. CW #1						6		1/30/2018	
OPERATION				Wellhead				KB	
PNA									
CASING/LINER		PERFORATIONS		DEPTH		PBTD		CIBP	
ROD DETAIL		TUBING DETAIL				PUMPING UNIT DETAIL			
Size	Count	Jts	Description	Length	Depth	Make	Size	SPM	SL
(5/8")									
(3/4")									
(7/8")									
(1")									
FG									
FG									
SUBS									
PUMP DETAIL									
PR/PRL									
COMMENTS									
REPORT									
Time									
	Drove to loc, had 5 min. safety meeting, rigged up cmt pump, and hydrolic hose busted, had to call in for parts, fixed pump and pumped 25 sx								
	class c cmt, on top of plug, pooh w/h tbg, and waited 4 hrs, for cmt to set, RIH w/h tbg and tagged plug at 3065, rigged up basic pump truck to								
	pressure up on csg, started pumping and pumped 10 bbls at 1 1/2 bbls a min at 500 # psi. called BLM and he advised to run pkr and pressure								
	up from 1500' to 3065', picked up 41/2 AD 1 pkr, and RIH w/h pkr to 1472 and tried to set pkr there did not set, run it to 1504 and set it, psi on csg								
	from 1504 to 3067 ,pressure up to 500# and held it for 10 min. held good, unset pkr.and RIH to 1850 and pumped balance plug from 1850 to								
	1750, cir,hole w/h 10% brine, pooh w/h tbg ,shut well in shut down.								
							COST DESCRIPTION		
							Pulling Unit	\$1,800	
							Supervision	\$1,300	
							Rental Equip.	\$100	
							Basic Trucking	\$1,500	
							Hobbs Anchor		
							DAILY COST	\$4,700	
							CUM COST	\$17,560	
							REPORT BY		
							SAM		

Marathon Oil

WORKOVER REPORT

LEASE AND WELL NAME		FIELD		AFE AMOUNT		DAY		DATE	
Bitter Lake Fed. CW #1						7		1/31/2018	
OPERATION				Wellhead				KB	
PNA									
CASING/LINER		PERFORATIONS		DEPTH		PBTD		CIBP	
ROD DETAIL		TUBING DETAIL				PUMPING UNIT DETAIL			
Size	Count	Jts	Description	Length	Depth	Make	Size	SPM	SL
(5/8")									
(3/4")									
(7/8")									
(1")									
FG									
FG									
SUBS									
PUMP DETAIL									
PR/PRL									
COMMENTS									
REPORT									
Time									
	Drove to loc 5 min. safety meeting. RIH w/h tbg, and tagged plug at 1536, called BLM and advise to pull pkr,to 947 and set it and pressure up on								
	csg, from 947 to 1536, held ok, and test above pkr, and it leaked wtr, started coming out surface csg, unset pkr, and pin point hole in csg at								
	between 96 ft and 128 ft, pooh and laid down pkr, RIH w/h tbg to 947 ft and pumped 225 sax of cmt from 947 to surface, and close bop and								
	keep pumping till got cmt out of surface valve, shut down pump, called BLM and send him picture of cmt at surfce in 4 1/2 csg, he said everything								
	ok, rigged down pulling unit ,shut down.								
	set up welder to cut well head in the morning and set dry hole marker.								
							COST DESCRIPTION		
							Pulling Unit	\$4,000	
							Supervision	\$1,300	
							Rental Equip.	\$100	
							Basic Trucking		
							Hobbs Anchor		
							DAILY COST	\$5,400	
							CUM COST	\$24,460	
REPORT BY									
SAM									

