

Submit 1 Copy To Appropriate District  
Office  
District I  
1625 N. French Dr., Hobbs, NM 88240  
District II  
1301 W. Grand Ave., Artesia, NM 88210  
District III  
1000 Rio Brazos Rd., Aztec, NM 87410  
District IV  
1220 S. St. Francis Dr., Santa Fe, NM  
87505

State of New Mexico  
Energy, Minerals and Natural Resources

Form C-103  
Revised July 18, 2013

OIL CONSERVATION DIVISION  
1220 South St. Francis Dr.  
Santa Fe, NM 87505

<b>SUNDRY NOTICES AND REPORTS ON WELLS</b> (DO NOT USE THIS FORM FOR PROPOSALS TO DRILL OR TO DEEPEN OR PLUG BACK TO A DIFFERENT RESERVOIR. USE "APPLICATION FOR PERMIT" (FORM C-101) FOR SUCH PROPOSALS.)	
1. Type of Well: Oil Well <input checked="" type="checkbox"/> Gas Well <input type="checkbox"/> Other <input type="checkbox"/>	7. Lease Name or Unit Agreement Name: <b>Remuda North 25 State</b>
2. Name of Operator <b>XTO Energy, Inc.</b>	8. Well Number <b>702H</b>
3. Address of Operator <b>500 W. Illinois, Ste 100 Midland TX 79701</b>	9. OGRID Number <b>005380</b>
4. Well Location Unit Letter <b>L</b> : <b>2330</b> feet from the <b>South</b> line and <b>690</b> feet from the <b>West</b> line Section <b>25</b> Township <b>23S</b> Range <b>29E</b> NMPM County <b>Eddy, NM</b>	10. Pool name or Wildcat <b>Forty-Niner Ridge; Bone Spring, Wes</b>
11. Elevation (Show whether DR, RKB, RT, GR, etc.) <b>3066</b>	

12. Check Appropriate Box to Indicate Nature of Notice, Report, or Other Data

NOTICE OF INTENTION TO:

PERFORM REMEDIAL WORK ☐ PLUG AND ABANDON ☐  
TEMPORARILY ABANDON ☐ CHANGE PLANS ☒  
PULL OR ALTER CASING ☐ MULTIPLE COMPL ☐  
DOWNHOLE COMMINGLE ☐  
CLOSED-LOOP SYSTEM ☐  
OTHER: ☐

SUBSEQUENT REPORT OF:

REMEDIAL WORK ☐ ALTERING CASING ☐  
COMMENCE DRILLING OPNS. ☐ P AND A ☐  
CASING/CEMENT JOB ☐  
OTHER: ☐

13. Describe proposed or completed operations. (Clearly state all pertinent details, and give pertinent dates, including estimated date of starting any proposed work). SEE RULE 19.15.7.14 NMAC.. For Multiple Completions: Attach wellbore diagram of proposed completion or recompletion.

**XTO Energy, Inc respectfully requests to change the surface hole location of the well on the pad.**

An updated C-102 is attached.

NM OIL CONSERVATION  
ARTESIA DISTRICT

FEB 09 2018

RECEIVED

Spud Date:

Rig Release Date:

I hereby certify that the information above is true and complete to the best of my knowledge and belief.

SIGNATURE Stephanie Rabadue TITLE Regulatory Analyst DATE 2.1.2018

Type or print name Stephanie Rabadue E-mail address: stephanie\_rabadue@xtoenergy.com PHONE 432-620-6714

For State Use Only

APPROVED BY Raymond J. Polansky TITLE Geologist DATE 2-12-2018  
Conditions of Approval (if any):

**NM OIL CONSERVATION**  
ARTESIA DISTRICT

**District I**  
1625 N. French Dr., Hobbs, NM 88240  
Phone: (575) 393-6161 Fax: (575) 393-0720  
**District II**  
811 S. First St., Artesia, NM 88210  
Phone: (575) 748-1283 Fax: (575) 748-9720  
**District III**  
1000 Rio Brazos Road, Aztec, NM 87410  
Phone: (505) 334-6178 Fax: (505) 334-6170  
**District IV**  
1220 S. St. Francis Dr., Santa Fe, NM 87505  
Phone: (505) 476-3460 Fax: (505) 476-3462

State of New Mexico  
Energy, Minerals & Natural Resources Department  
**OIL CONSERVATION DIVISION**  
1220 South St. Francis Dr.  
Santa Fe, NM 87505

**FEB 09 2018**

**RECEIVED**

Form C-102  
Revised August 1, 2011  
Submit one copy to appropriate  
District Office

☐ AMENDED REPORT

**WELL LOCATION AND ACREAGE DEDICATION PLAT**

<sup>1</sup> API Number <b>30-015-44217</b>	<sup>2</sup> Pool Code <b>910521e</b>	<sup>3</sup> Pool Name <b>Forty-Niner Ridge; Bone Spring, w</b>
<sup>4</sup> Property Code <b>317790</b>	<sup>5</sup> Property Name <b>REMUDA NORTH 25 STATE</b>	
<sup>7</sup> GRID NO. <b>005380</b>	<sup>8</sup> Operator Name <b>XTO ENERGY, INC.</b>	<sup>9</sup> Elevation <b>3066'</b>

<sup>10</sup> Surface Location

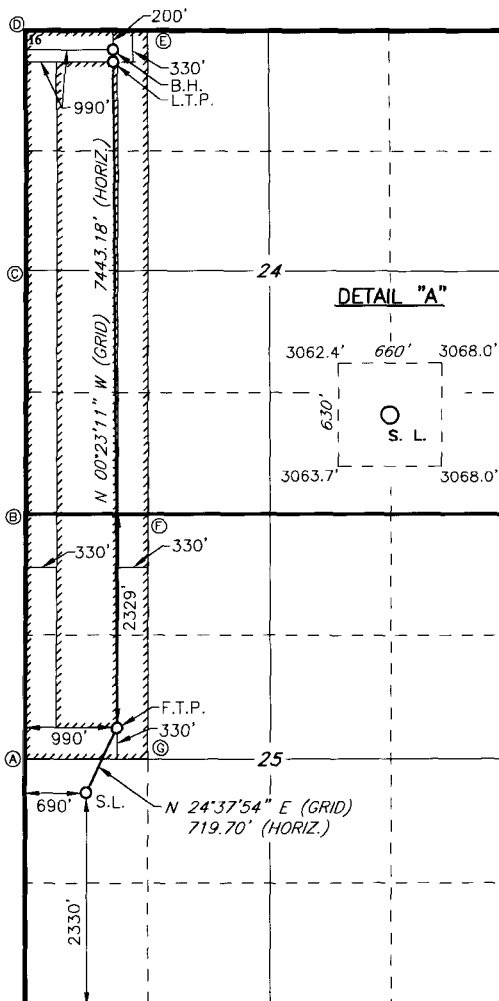
UL or lot no.	Section	Township	Range	Lot Idn	Feet from the	North/South line	Feet From the	East/West line	County
<b>L</b>	<b>25</b>	<b>23S</b>	<b>29E</b>		<b>2330</b>	<b>SOUTH</b>	<b>690</b>	<b>WEST</b>	<b>EDDY</b>

<sup>11</sup> Bottom Hole Location If Different From Surface

UL or lot no.	Section	Township	Range	Lot Idn	Feet from the	North/South line	Feet from the	East/West line	County
<b>D</b>	<b>24</b>	<b>23S</b>	<b>29E</b>		<b>200</b>	<b>NORTH</b>	<b>990</b>	<b>WEST</b>	<b>EDDY</b>

<sup>12</sup> Dedicated Acres <b>240</b>	<sup>13</sup> Joint or Infill	<sup>14</sup> Consolidation Code	<sup>15</sup> Order No.
---	-------------------------------	----------------------------------	-------------------------

No allowable will be assigned to this completion until all interest have been consolidated or a non-standard unit has been approved by the division.



GEODETIC DATA NAD 27 GRID - NM EAST	GEODETIC DATA NAD 83 GRID - NM EAST
<b>BOTTOM HOLE</b> N: 472032.0 - E: 620573.1 LAT: 32.29712935° N LONG: 103.94311882° W	<b>BOTTOM HOLE</b> N: 472091.5 - E: 661756.3 LAT: 32.29725156° N LONG: 103.94360940° W
<b>LAST TAKE POINT</b> N: 471902.0 - E: 620574.4 LAT: 32.29677208° N LONG: 103.94311628° W	<b>LAST TAKE POINT</b> N: 471961.6 - E: 661757.6 LAT: 32.29689432° N LONG: 103.94360682° W
<b>CORNER DATA NAD 27 GRID - NM EAST</b>	<b>CORNER DATA NAD 83 GRID - NM EAST</b>
A: FOUND BRASS CAP "1942" N: 464261.1 - E: 619633.5	A: FOUND BRASS CAP "1942" N: 464320.4 - E: 660816.9
B: FOUND BRASS CAP "1942" N: 466918.8 - E: 619633.8	B: FOUND BRASS CAP "1942" N: 466978.3 - E: 660817.1
C: FOUND BRASS CAP "1942" N: 469576.5 - E: 619607.1	C: FOUND BRASS CAP "1942" N: 469636.0 - E: 660790.3
D: FOUND BRASS CAP "1942" N: 472233.3 - E: 619581.4	D: FOUND BRASS CAP "1942" N: 472292.8 - E: 660764.6
E: CALCULATED CORNER N: 472231.5 - E: 620907.1	E: CALCULATED CORNER N: 472291.0 - E: 662090.0
F: CALCULATED CORNER N: 466919.5 - E: 620957.3	F: CALCULATED CORNER N: 466978.9 - E: 662140.6
G: CALCULATED CORNER N: 464260.4 - E: 620959.8	G: CALCULATED CORNER N: 464319.8 - E: 662143.1
<b>GEODETIC DATA NAD 27 GRID - NM EAST</b>	<b>GEODETIC DATA NAD 83 GRID - NM EAST</b>
<b>FIRST TAKE POINT</b> N: 464590.6 - E: 620623.3 LAT: 32.27667315° N LONG: 103.94304408° W	<b>FIRST TAKE POINT</b> N: 464649.9 - E: 661806.7 LAT: 32.27679554° N LONG: 103.94353382° W
<b>SURFACE LOCATION</b> N: 463936.5 - E: 620323.4 LAT: 32.27487828° N LONG: 103.94402218° W	<b>SURFACE LOCATION</b> N: 463995.9 - E: 661506.8 LAT: 32.27500066° N LONG: 103.94451191° W

<b><sup>17</sup> OPERATOR CERTIFICATION</b>	
I hereby certify that the information contained herein is true and complete to the best of my knowledge and belief, and that this organization either owns a working interest or unleased mineral interest in the land including the proposed bottom hole location or has a right to drill this well at this location pursuant to a contract with an owner of such a mineral or working interest, or to a voluntary pooling agreement or a compulsory pooling order heretofore entered by the division.	
Signature <i>Stephanie Rabadue</i>	Date <i>2-1-18</i>
Printed Name <b>Stephanie Rabadue</b>	
E-mail Address <i>Stephanie.rabadue@xtoenergy.com</i>	
<b><sup>18</sup> SURVEYOR CERTIFICATION</b>	
I hereby certify that the well location shown on this plat was plotted from field notes of actual surveys made by me or under my supervision, and that the same is true and correct to the best of my belief.	
2-23-2017 Date of Survey	
Signature and Seal of Professional Surveyor <i>Robert M. Howett</i>	
19680 Certificate Number	