

District I
1625 N. French Dr., Hobbs, NM 88240
Phone: (575) 393-6161 Fax: (575) 393-6720
District II
911 S. First St., Artesia, NM 88210
Phone: (575) 748-1283 Fax: (575) 748-9720
District III
1000 Rio Brown Road, Aztec, NM 87410
Phone: (505) 334-6178 Fax: (505) 334-6170
District IV
1220 S. St. Francis Dr., Santa Fe, NM 87505
Phone: (505) 476-3460 Fax: (505) 476-3462

State of New Mexico
Energy, Minerals & Natural Resources Department
OIL CONSERVATION DIVISION
1220 South St. Francis Dr.
Santa Fe, NM 87505

NM OIL CONSERVATION
ARTESIA DISTRICT

FEB 07 2018 Form C-102
Revised August 1, 2011
Submit one copy to appropriate
RECEIVED District Office

☒ AMENDED REPORT
(As-Drilled)

WELL LOCATION AND ACREAGE DEDICATION PLAT

API Number 30-015-44522	Pool Code 50371	Pool Name Pierce Crossing Bone Spring
Property Code 314329	Property Name CEDAR CANYON "29" FEDERAL COM	Well Number 25H
OGRID No. 16696	Operator Name OXY USA INC.	Elevation 2928.6'

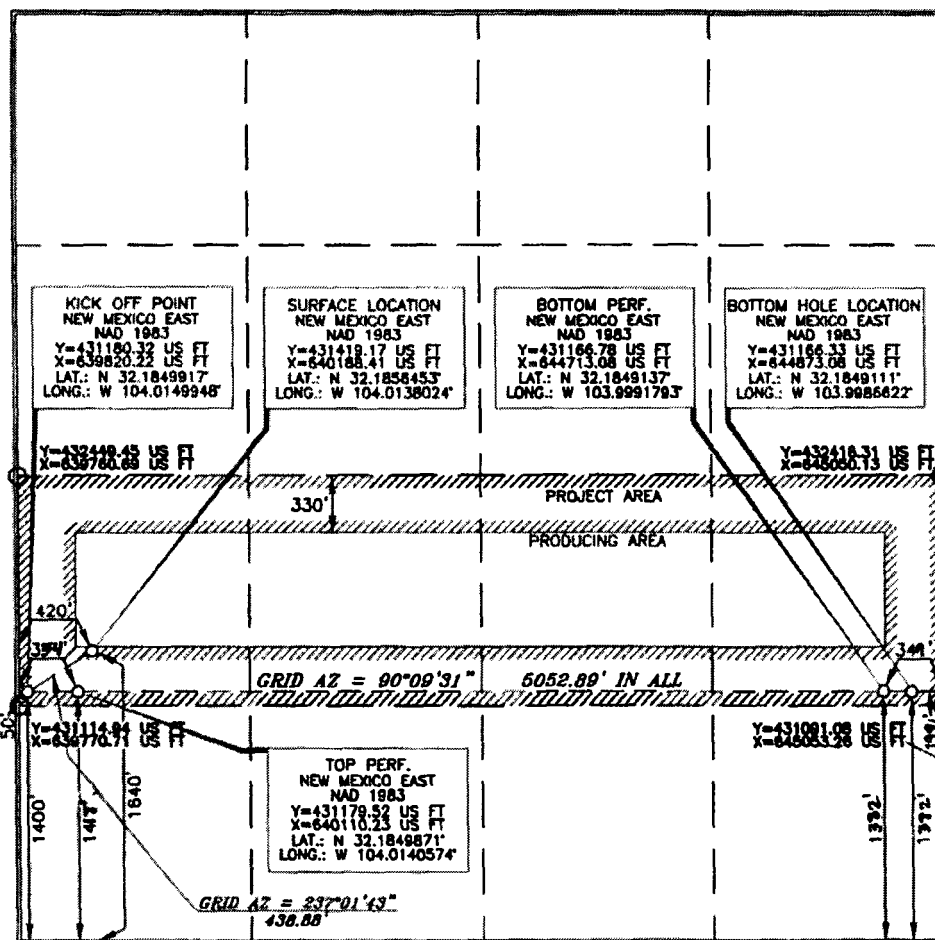
Surface Location

UL or lot no.	Section	Township	Range	Lot Idn	Feet from the	North/South line	Feet from the	East/West line	County
L	29	24 SOUTH	29 EAST, N.M.P.M.		1640'	SOUTH	420'	WEST	EDDY

Bottom Hole Location If Different From Surface

UL or lot no.	Section	Township	Range	Lot Idn	Feet from the	North/South line	Feet from the	East/West line	County
I	29	24 SOUTH	29 EAST, N.M.P.M.		1640' 1332'	SOUTH	420' 199'	EAST	EDDY
Dedicated Acres 160	Joint or Infill Y	Consolidation Code	Order No. NSL-7568	BP- 1382 FSL 349 FEL					
				TP- 1418 FSL 354 FWL					

No allowable will be assigned to this completion until all interests have been consolidated or a non-standard unit has been approved by the division.



OPERATOR CERTIFICATION

I hereby certify that the information contained herein is true and complete to the best of my knowledge and belief, and that this organization either owns a working interest or unleased mineral interest in the land including the proposed bottom hole location or has a right to drill this well at this location pursuant to a contract with an owner of such a mineral or working interest, or to a voluntary pooling agreement or a compulsory pooling order heretofore entered by the Division.

[Signature] 1/31/18
Jana Mendiola
janelyn_mendiola@oxy.com

SURVEYOR CERTIFICATION

I hereby certify that the well location shown on this plat was located from the holder of actual surveys made by me or under my supervision, and that the same is true and correct to the best of my belief.

[Signature]
Date of Survey
15079
Professional Land Surveyor

[Signature] 3/16/2017
Certificate Number 15079