

District I
1625 N. French Dr., Hobbs, NM 88240
Phone: (575) 393-6161 Fax: (575) 393-0720

District II
811 S. First St., Artesia, NM 88210
Phone: (575) 748-1283 Fax: (575) 748-9720

District III
1000 Rio Brazos Road, Aztec, NM 87410
Phone: (505) 334-6178 Fax: (505) 334-6170

District IV
1220 S. St. Francis Dr., Santa Fe, NM 87505
Phone: (505) 476-3460 Fax: (505) 476-3462

State of New Mexico
Energy Minerals and Natural Resources
Oil Conservation Division
1220 South St. Francis Dr.
Santa Fe, NM 87505

NM OIL CONSERVATION
ARTESIA DISTRICT

Form C-101
Revised July 18, 2013

MAR 26 2018

☐ AMENDED REPORT
RECEIVED

APPLICATION FOR PERMIT TO DRILL, RE-ENTER, DEEPEN, PLUGBACK, OR ADD A ZONE

¹ Operator Name and Address DELAWARE ENERGY, LLC 405 N. MARIENFELD, SUITE 250 MIDLAND, TX 79707		² OGRID Number 371195 ³ API Number 30-015-44851
⁴ Property Code 321152	⁵ Property Name HOOD SWD	⁶ Well No. 1

⁷ Surface Location

UL - Lot	Section	Township	Range	Lot Idn	Feet from	N/S Line	Feet From	E/W Line	County
I	13	24 S	26 E		1980	S	330	E	EDDY

⁸ Proposed Bottom Hole Location

UL - Lot	Section	Township	Range	Lot Idn	Feet from	N/S Line	Feet From	E/W Line	County

⁹ Pool Information

Pool Name SWD; DEVONIAN	Pool Code 96101
----------------------------	--------------------

Additional Well Information

¹¹ Work Type N	¹² Well Type S	¹³ Cable/Rotary ROTARY	¹⁴ Lease Type P	¹⁵ Ground Level Elevation 3,216'
¹⁶ Multiple N	¹⁷ Proposed Depth 13,900'	¹⁸ Formation DEVONIAN	¹⁹ Contractor TBD	²⁰ Spud Date 4/1/2018
Depth to Ground water 12' - 139'		Distance from nearest fresh water well .63 MILES		Distance to nearest surface water .37 MILES

☐ We will be using a closed-loop system in lieu of lined pits

²¹ Proposed Casing and Cement Program

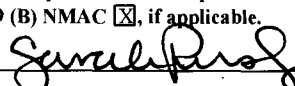
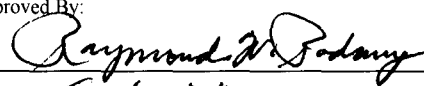
Type	Hole Size	Casing Size	Casing Weight/ft	Setting Depth	Sacks of Cement	Estimated TOC
SURFACE	17.5"	13.375"	54.5	500'	450	0'
INTER	12.25"	9.625"	47	9,000'	2500	0'
PROD	8.5"	7.625"	39	12,900'	650	0'

Casing/Cement Program: Additional Comments

--

²² Proposed Blowout Prevention Program

Type	Working Pressure	Test Pressure	Manufacturer
DOUBLE RAM	5000	5000	CAMERON

²³ I hereby certify that the information given above is true and complete to the best of my knowledge and belief. I further certify that I have complied with 19.15.14.9 (A) NMAC <input checked="" type="checkbox"/> and/or 19.15.14.9 (B) NMAC <input checked="" type="checkbox"/> , if applicable. Signature:  Printed name: SARAH PRESLEY Title: OPERATIONS MANAGER E-mail Address: S.PRESLEY@DELAWAREENERGY.COM Date: 3.21.2018	<div style="text-align: center; border-bottom: 1px solid black; padding-bottom: 5px;">OIL CONSERVATION DIVISION</div> Approved By:  Title: Geologist Approved Date: 4-6-18 Expiration Date: 4-6-20 Conditions of Approval Attached: APPROVED - C-108.
--	---

MAR 26 2018

Form C-102

Revised August 1, 2011

DISTRICT I

1625 N. French Dr., Hobbs, NM 88240
Phone (575) 393-6161 Fax: (575) 393-0720

DISTRICT II

811 S. First St., Artesia, NM 88210
Phone (575) 746-1283 Fax: (575) 746-8720

DISTRICT III

1000 Rio Brazos Rd., Aztec, NM 87410
Phone (505) 334-6178 Fax: (505) 334-6170

DISTRICT IV

1220 S. St. Francis Dr., Santa Fe, NM 87505
Phone (505) 476-3480 Fax: (505) 476-3482

State of New Mexico
Energy, Minerals and Natural Resources Department

OIL CONSERVATION DIVISION

1220 South St. Francis Dr.
Santa Fe, New Mexico 87505

RECEIVED

Submit one copy to appropriate
District Office

WELL LOCATION AND ACREAGE DEDICATION PLAT

☐ AMENDED REPORT

API Number 30-015-44851	Pool Code 96101	Pool Name SWD; DEVONIAN
Property Code 321152	Property Name HOOD SWD	
OGRID No. 371195	Operator Name DELAWARE ENERGY	
		Well Number 1
		Elevation 3216'

Surface Location

UL or lot No.	Section	Township	Range	Lot Idn	Feet from the	North/South line	Feet from the	East/West line	County
1	13	24 S	26 E		1980	SOUTH	330	EAST	EDDY

Bottom Hole Location If Different From Surface

UL or lot No.	Section	Township	Range	Lot Idn	Feet from the	North/South line	Feet from the	East/West line	County

Dedicated Acres	Joint or Infill	Consolidation Code	Order No.

NO ALLOWABLE WILL BE ASSIGNED TO THIS COMPLETION UNTIL ALL INTERESTS HAVE BEEN CONSOLIDATED
OR A NON-STANDARD UNIT HAS BEEN APPROVED BY THE DIVISION

SURFACE LOCATION
Lat - N 32.215369
Long - W 104.239009
NAD83
NMSPE - N 442098.1
E 570508.5
(NAD-83)

OPERATOR CERTIFICATION

I hereby certify that the information contained herein is true and complete to the best of my knowledge and belief, and that this organization either owns a working interest or undivided mineral interest in the land including the proposed bottom hole location or has a right to drill this well at this location pursuant to a contract with an owner of such a mineral or working interest, or to a voluntary pooling agreement or a compulsory pooling order heretofore entered by the division.

Sarah Presley 3.21.18
Signature Date

Sarah Presley
Printed Name

s.presley@delawareenergy.com
Email Address

SURVEYOR CERTIFICATION

I hereby certify that the well location shown on this plat was plotted from field notes of actual surveys made by me or under my supervision and that the same is true and correct to the best of my belief.

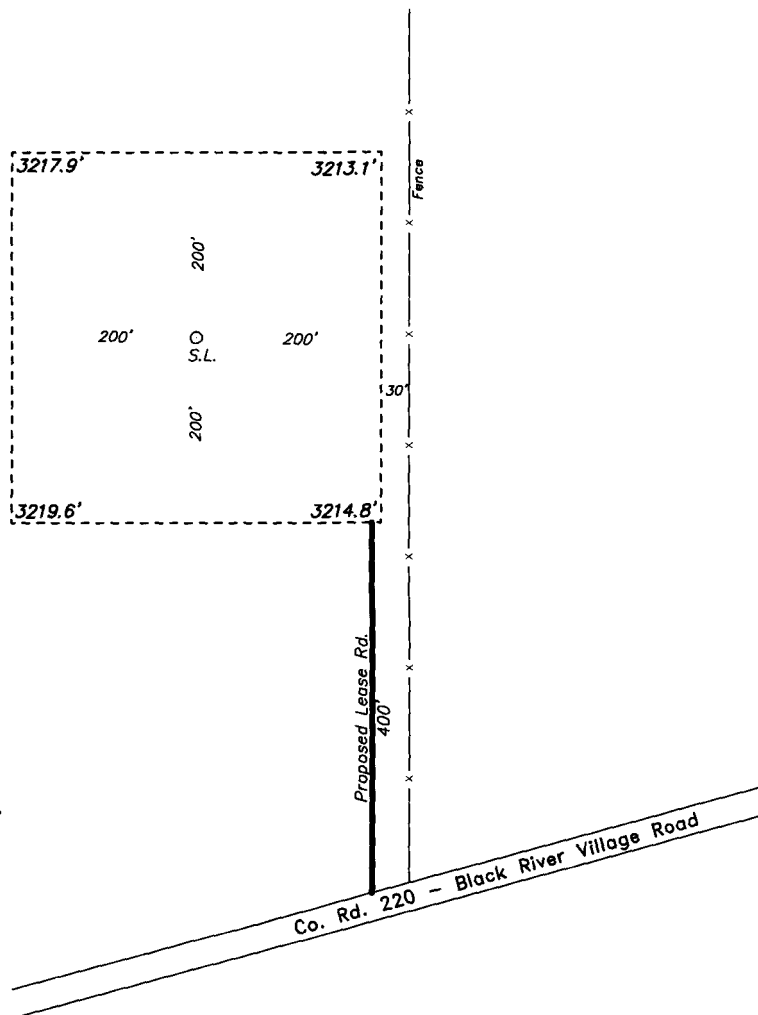
FEBRUARY 27 2018
NEW MEXICO
Professional Surveyor
7977

Date Surveyed
Signature & Seal of Professional Surveyor

Certificate No. 7977
BASIN NUMBER

0' 500' 1000' 1500' 2000'
SCALE: 1" = 1000'
WO Num.: 33480

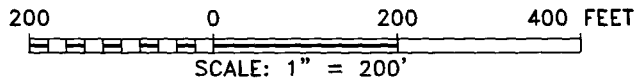
**SECTION 13, TOWNSHIP 24 SOUTH, RANGE 26 EAST, N.M.P.M.,
EDDY COUNTY, NEW MEXICO.**



**HOOD SWD #1
ELEV. - 3216'**

Lat - N 32.215369°
Long - W 104.239009°
NMSPCE- N 442098.1
E 570508.5
(NAD-83)

CARLSBAD, NM IS ±9 MILES TO THE NORTH OF LOCATION.



DELAWARE ENERGY

REF: HOOD SWD #1 / WELL PAD TOPO

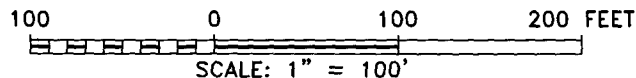
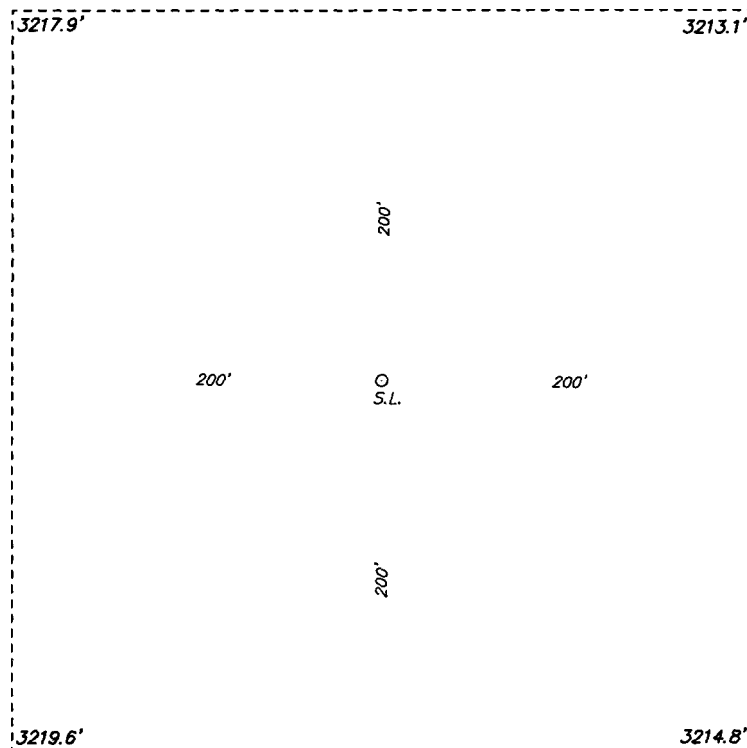
THE HOOD SWD #1 LOCATED 1980' FROM
THE SOUTH LINE AND 330' FROM THE EAST LINE OF
SECTION 13, TOWNSHIP 24 SOUTH, RANGE 26 EAST.

N.M.P.M., EDDY COUNTY, NEW MEXICO.

**basin
surveys**
focused on excellence
in the oilfield

P.O. Box 1786
1120 N. West County Rd.
Hobbs, New Mexico 88241
(575) 393-7316 - Office
(575) 392-2206 - Fax
basinsurveys.com

SECTION 13, TOWNSHIP 24 SOUTH, RANGE 26 EAST, N.M.P.M.,
EDDY COUNTY, NEW MEXICO.



DELWARE ENERGY

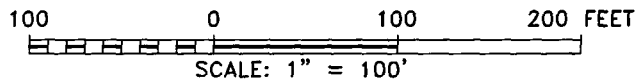
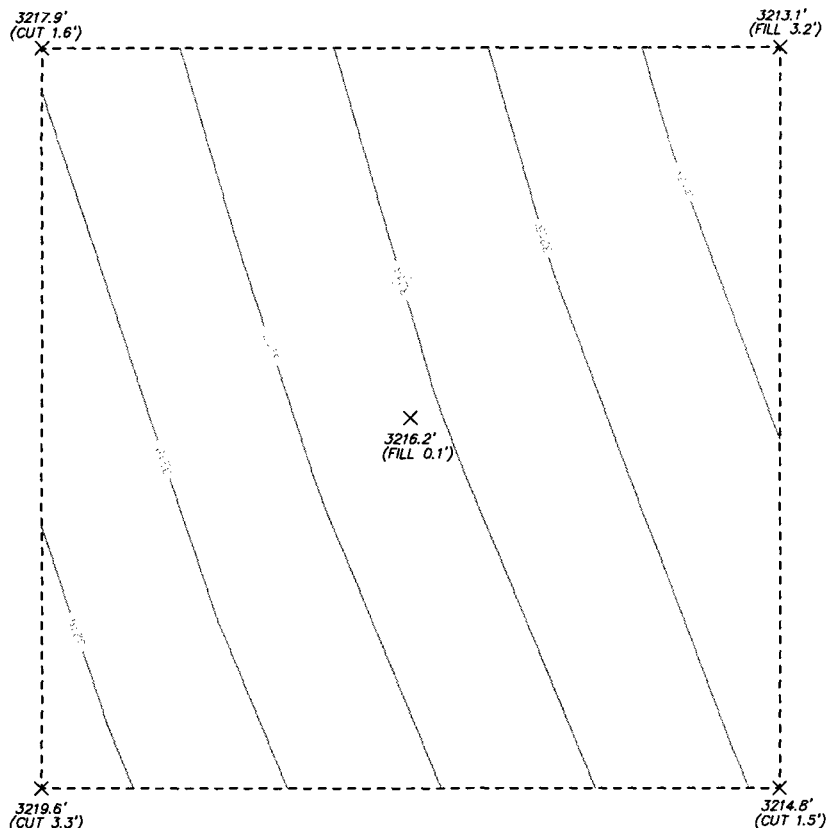
REF: HOOD SWD #1 / WELL PAD T&PO

THE HOOD SWD #1 LOCATED 1980' FROM
THE SOUTH LINE AND 330' FROM THE EAST LINE OF
SECTION 13, TOWNSHIP 24 SOUTH, RANGE 26 EAST.
N.M.P.M., EDDY COUNTY, NEW MEXICO.

**basin
surveys**
focused on excellence
in the oilfield

P.O. Box 1786
1120 N. West County Rd.
Hobbs, New Mexico 88241
(575) 393-7316 - Office
(575) 392-2206 - Fax
basinsurveys.com

**SECTION 13, TOWNSHIP 24 SOUTH, RANGE 26 EAST, N.M.P.M.,
EDDY COUNTY, NEW MEXICO.**



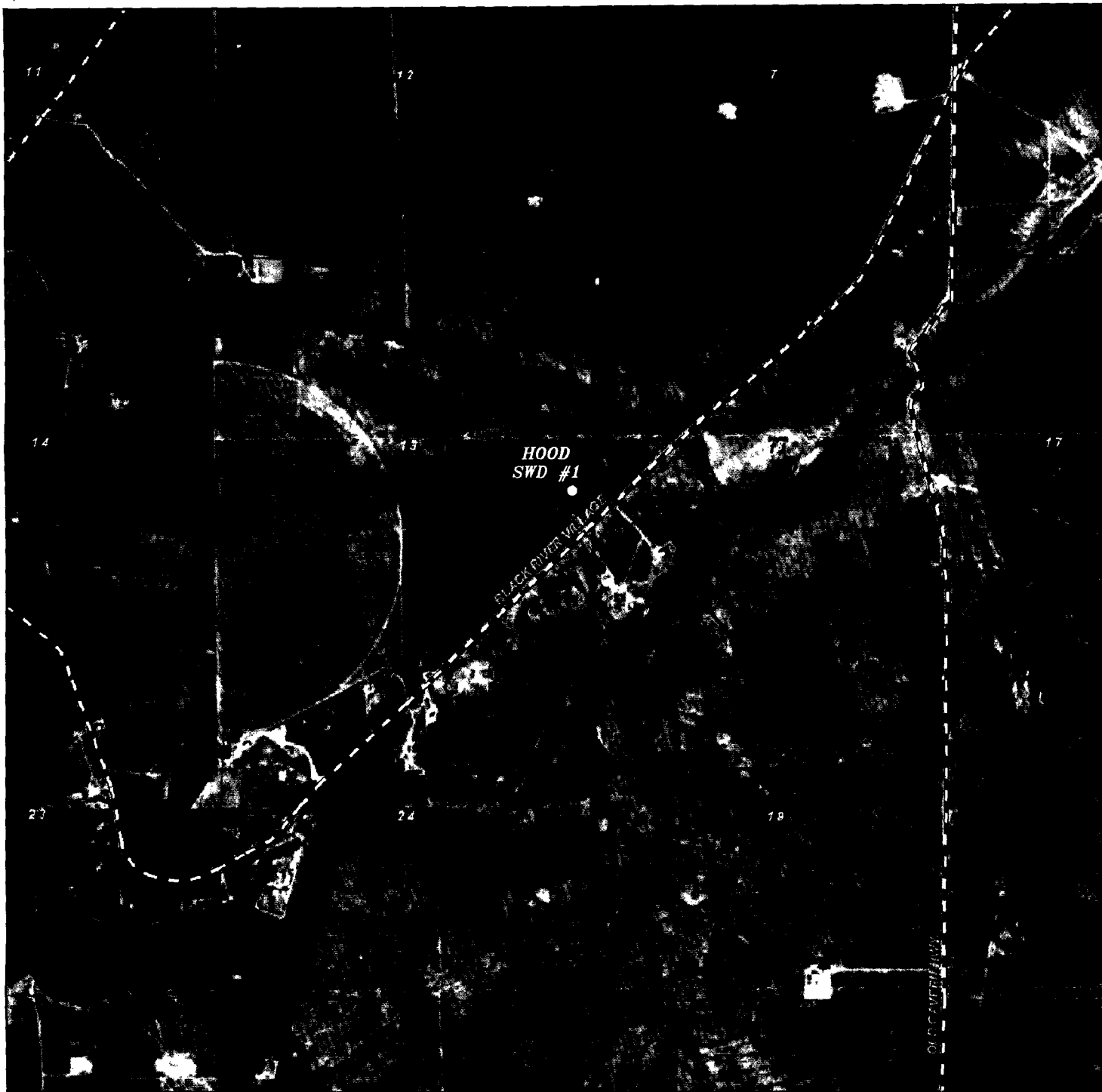
DELMARE ENERGY

REF: HOOD SWD #1 / CUT & FILL •

THE HOOD SWD #1 LOCATED 1980' FROM
THE SOUTH LINE AND 330' FROM THE EAST LINE OF
SECTION 13, TOWNSHIP 24 SOUTH, RANGE 26 EAST.
N.M.P.M., EDDY COUNTY, NEW MEXICO.

**basin
surveys**
focused on excellence
in the oilfield

P.O. Box 1786
1120 N. West County Rd.
Hobbs, New Mexico 88241
(575) 393-7316 - Office
(575) 392-2206 - Fax
basinsurveys.com



HOOD SWD #1
 Located 1980' FSL and 330' FEL
 Section 13, Township 24 South, Range 26 East,
 N.M.P.M., Eddy County, New Mexico.

basin
surveys

focused on excellence
 in the oilfield

P.O. Box 1786
 1120 N. West County Rd.
 Hobbs, New Mexico 88241
 (575) 393-7316 - Office
 (575) 392-2206 - Fax
 basinsurveys.com

0' 1000' 2000' 3000' 4000'

SCALE: 1" = 2000'

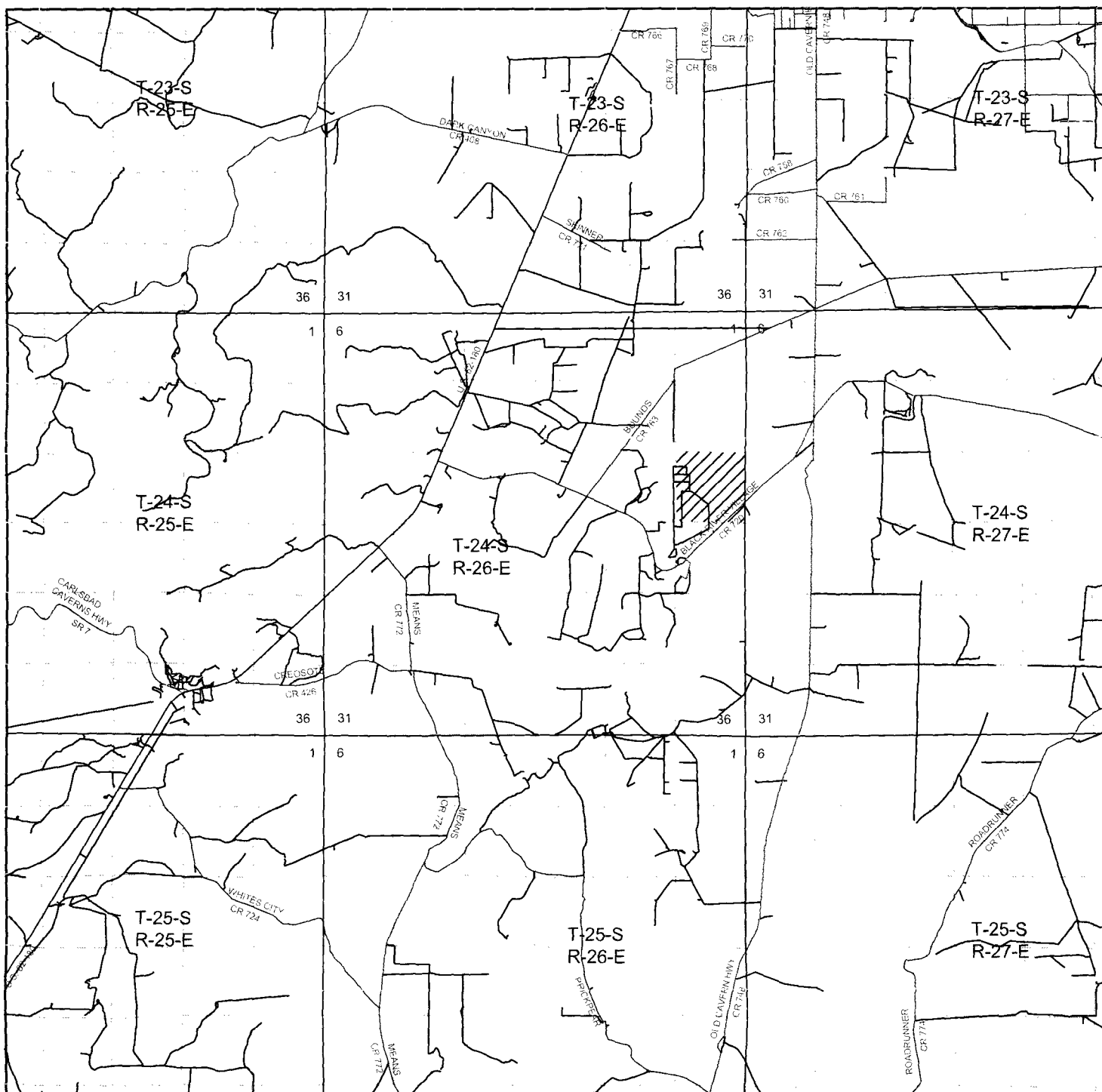
W.O. Number: KJG 33480

Survey Date: 02-26-2018

YELLOW TINT - USA LAND
 BLUE TINT - STATE LAND
 NATURAL COLOR - FEE LAND



DELMWARE
ENERGY



HOOD SWD #1

Located 1980' FSL and 330' FEL
Section 13, Township 24 South, Range 26 East,
N.M.P.M., Eddy County, New Mexico.

basin
surveys
focused on excellence
in the oilfield

P.O. Box 1786
1120 N. West County Rd.
Hobbs, New Mexico 88241
(575) 393-7316 - Office
(575) 392-2206 - Fax
basinsurveys.com

0 1 MI 2 MI 3 MI 4 MI

SCALE: 1" = 2 MILES

W.O. Number: KJG 33480

Survey Date: 02-26-2018

YELLOW TINT - USA LAND
BLUE TINT - STATE LAND
NATURAL COLOR - FEE LAND

DELMARE
ENERGY