

**District I**  
1625 N. French Dr., Hobbs, NM 88240  
Phone: (575) 393-6161 Fax: (575) 393-0720

**District II**  
811 S. First St., Artesia, NM 88210  
Phone: (575) 748-1283 Fax: (575) 748-9720

**District III**  
1000 Rio Brazos Road, Aztec, NM 87410  
Phone: (505) 334-6178 Fax: (505) 334-6170

**District IV**  
1220 S. St. Francis Dr., Santa Fe, NM 87505  
Phone: (505) 476-3460 Fax: (505) 476-3462

**State of New Mexico**  
**Energy Minerals and Natural Resources**  
**Oil Conservation Division**  
**1220 South St. Francis Dr.**  
**Santa Fe, NM 87505**

**NM OIL CONSERVATION**  
**ARTESIA DISTRICT**  
Form C-101  
Revised July 18, 2013

**MAR 26 2018**  
☐ AMENDED REPORT  
**RECEIVED**

**APPLICATION FOR PERMIT TO DRILL, RE-ENTER, DEEPEN, PLUGBACK, OR ADD A ZONE**

|   |  |   |
|---|--|---|
| <sup>1</sup> Operator Name and Address<br>DELAWARE ENERGY, LLC<br>405 N. MARIENFELD, SUITE 250<br>MIDLAND, TX 79707 |  | <sup>2</sup> OGRID Number<br>371195     |
|   |  | <sup>3</sup> API Number<br>30-015-44852 |
| <sup>4</sup> Property Code<br>321153  | <sup>5</sup> Property Name<br>LINDAMAN SWD |   |
|   |  | <sup>6</sup> Well No.<br>1              |

**7. Surface Location**

| UL - Lot | Section | Township | Range | Lot Idn | Feet from | N/S Line | Feet From | E/W Line | County |
|----------|---------|----------|-------|---------|-----------|----------|-----------|----------|--------|
| D        | 14      | 24 S     | 26 E  |         | 1235      | N        | 1075      | W        | EDDY   |

**\* Proposed Bottom Hole Location**

| UL - Lot | Section | Township | Range | Lot Idn | Feet from | N/S Line | Feet From | E/W Line | County |
|----------|---------|----------|-------|---------|-----------|----------|-----------|----------|--------|
|          |         |          |       |         |           |          |           |          |        |

**9. Pool Information**

|                            |                    |
|----------------------------|--------------------|
| Pool Name<br>SWD; DEVONIAN | Pool Code<br>96101 |
|----------------------------|--------------------|

**Additional Well Information**

|                              |   |  |                                 |  |
|------------------------------|---|--|---------------------------------|--|
| <sup>11</sup> Work Type<br>N | <sup>12</sup> Well Type<br>S            | <sup>13</sup> Cable/Rotary<br>ROTARY   | <sup>14</sup> Lease Type<br>P   | <sup>15</sup> Ground Level Elevation<br>3,278' |
| <sup>16</sup> Multiple<br>N  | <sup>17</sup> Proposed Depth<br>13,900' | <sup>18</sup> Formation<br>DEVONIAN    | <sup>19</sup> Contractor<br>TBD | <sup>20</sup> Spud Date<br>4/15/2018           |
| Depth to Ground water        |   | Distance from nearest fresh water well |                                 | Distance to nearest surface water              |

☐ We will be using a closed-loop system in lieu of lined pits

**21. Proposed Casing and Cement Program**

| Type    | Hole Size | Casing Size | Casing Weight/ft | Setting Depth | Sacks of Cement | Estimated TOC |
|---------|-----------|-------------|------------------|---------------|-----------------|---------------|
| SURFACE | 17.5"     | 13.375"     | 54.5             | 500'          | 450             | 0'            |
| INTER   | 12.25"    | 9.625"      | 47               | 9,000'        | 2500            | 0'            |
| PROD    | 8.5"      | 7.625       | 39               | 12,900'       | 650             | 0'            |

**Casing/Cement Program: Additional Comments**

|  |
|--|
|  |
|--|

**22. Proposed Blowout Prevention Program**

| Type       | Working Pressure | Test Pressure | Manufacturer |
|------------|------------------|---------------|--------------|
| DOUBLE RAM | 5000             | 5000          | CAMERON      |

|  |  |   |  |
|--|--|---|--|
| <sup>23</sup> I hereby certify that the information given above is true and complete to the best of my knowledge and belief.<br>I further certify that I have complied with 19.15.14.9 (A) NMAC <input checked="" type="checkbox"/> and/or 19.15.14.9 (B) NMAC <input checked="" type="checkbox"/> , if applicable.<br>Signature: <i>Sarah Presley</i><br>Printed name: SARAH PRESLEY<br>Title: OPERATIONS MANAGER<br>E-mail Address: S.PRESLEY@DELAWAREENERGY.COM<br>Date: 3.21.2018      Phone: 432-685-7005 |  | <b>OIL CONSERVATION DIVISION</b><br>Approved By: <i>Raymond W. Rodaway</i><br>Title: <i>Geologist</i><br>Approved Date: <i>4-6-18</i> Expiration Date: <i>4-6-20</i><br>Conditions of Approval Attached: <i>Approved C-108.</i> |  |
|--|--|---|--|

DISTRICT I  
1825 N. French Dr., Hobbs, NM 88240  
Phone (575) 393-6161 Fax: (575) 393-0720

DISTRICT II  
811 S. First St., Artesia, NM 88210  
Phone (575) 748-1283 Fax: (575) 748-9720

DISTRICT III  
1000 Rio Brazos Rd., Aztec, NM 87410  
Phone (505) 334-6178 Fax: (505) 334-6170

DISTRICT IV  
1220 S. St. Francis Dr., Santa Fe, NM 87505  
Phone (505) 476-3460 Fax: (505) 476-3462

State of New Mexico  
Energy, Minerals and Natural Resources Department

**OIL CONSERVATION DIVISION**  
1220 South St. Francis Dr.  
Santa Fe, New Mexico 87505

Submit one copy to appropriate  
District Office

**WELL LOCATION AND ACREAGE DEDICATION PLAT**

☐ AMENDED REPORT

|                                   |   |                                   |
|-----------------------------------|---|-----------------------------------|
| API Number<br><b>30-015-44852</b> | Pool Code<br><b>96101</b>               | Pool Name<br><b>SWD; DEVONIAN</b> |
| Property Code<br><b>321153</b>    | Property Name<br><b>LINDAMAN SWD</b>    | Well Number<br><b>1</b>           |
| OGRID No.<br><b>371195</b>        | Operator Name<br><b>DELAWARE ENERGY</b> | Elevation<br><b>3278</b>          |

**Surface Location**

| UL or lot No. | Section | Township | Range | Lot Idn | Feet from the | North/South line | Feet from the | East/West line | County |
|---------------|---------|----------|-------|---------|---------------|------------------|---------------|----------------|--------|
| D             | 14      | 24 S     | 26 E  |         | 1235          | NORTH            | 1075          | WEST           | EDDY   |

**Bottom Hole Location If Different From Surface**

| UL or lot No.   | Section | Township        | Range | Lot Idn            | Feet from the | North/South line | Feet from the | East/West line | County |
|-----------------|---------|-----------------|-------|--------------------|---------------|------------------|---------------|----------------|--------|
|                 |         |                 |       |                    |               |                  |               |                |        |
| Dedicated Acres |         | Joint or Infill |       | Consolidation Code |               | Order No.        |               |                |        |
|                 |         |                 |       |                    |               |                  |               |                |        |

**NO ALLOWABLE WILL BE ASSIGNED TO THIS COMPLETION UNTIL ALL INTERESTS HAVE BEEN CONSOLIDATED  
OR A NON-STANDARD UNIT HAS BEEN APPROVED BY THE DIVISION**

N.: 445585.0  
E.: 560211.8  
(NAD83)

**SURFACE LOCATION**  
Lat - N 32.221509°  
Long - W 104.268721°  
NMSPC- N 444324.8  
E 561318.4  
(NAD-83)

N.: 445464.2  
E.: 565528.4  
(NAD83)

N.: 442848.8  
E.: 560281.9  
(NAD83)

**OPERATOR CERTIFICATION**

I hereby certify that the information contained herein is true and complete to the best of my knowledge and belief, and that this organization either owns a working interest or unleased mineral interest in the land including the proposed bottom hole location or has a right to drill this well at this location pursuant to a contract with an owner of such a mineral or working interest, or to a voluntary pooling agreement or a compulsory pooling order heretofore entered by the division.

*Sarah Presley* 3.21.18  
Signature Date

**Sarah Presley**  
Printed Name  
s.presley@delawareenergy.com  
Email Address

**SURVEYOR CERTIFICATION**

I hereby certify that the well location shown on this plat was plotted from field notes of actual surveys made by me or under my supervision and that the same is true and correct to the best of my belief.

FEBRUARY 28 2018  
Date Surveyed

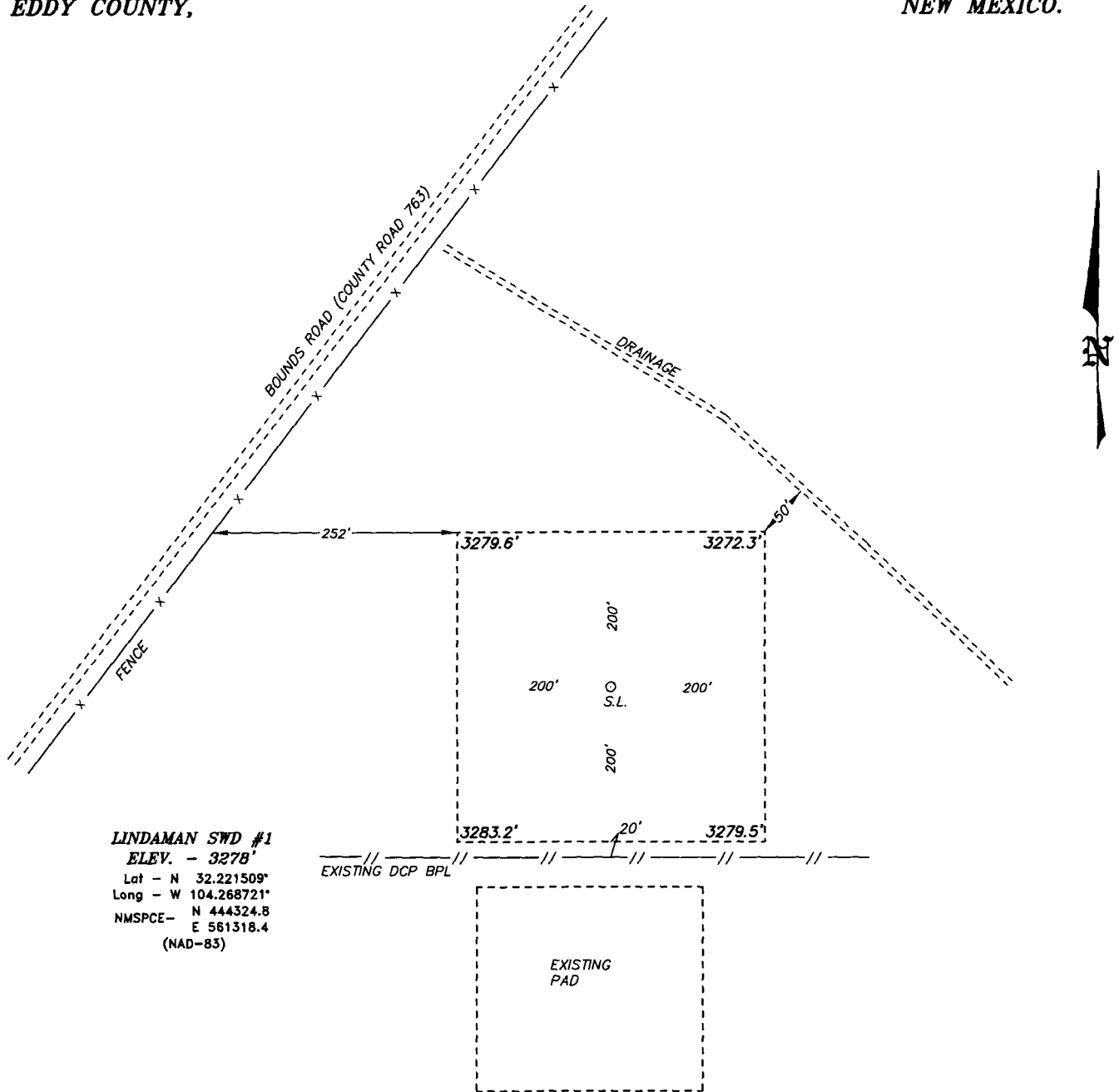
*[Signature]*  
Signature of Professional Surveyor

7977  
Certificate No.

7977  
BASIN SURVEY

0' 500' 1000' 1500' 2000'  
SCALE: 1" = 1000'  
WO Num.: 33565

**SECTION 14, TOWNSHIP 24 SOUTH, RANGE 26 EAST, N.M.P.M.,  
EDDY COUNTY, NEW MEXICO.**



**basin  
surveys**  
 focused on excellence  
 in the oilfield

P.O. Box 1786  
 1120 N. West County Rd.  
 Hobbs, New Mexico 88241

(575) 393-7316 - Office  
 (575) 392-2206 - Fax  
 basin-surveys.com

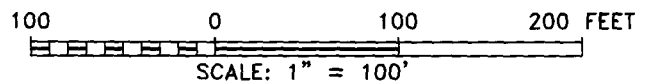
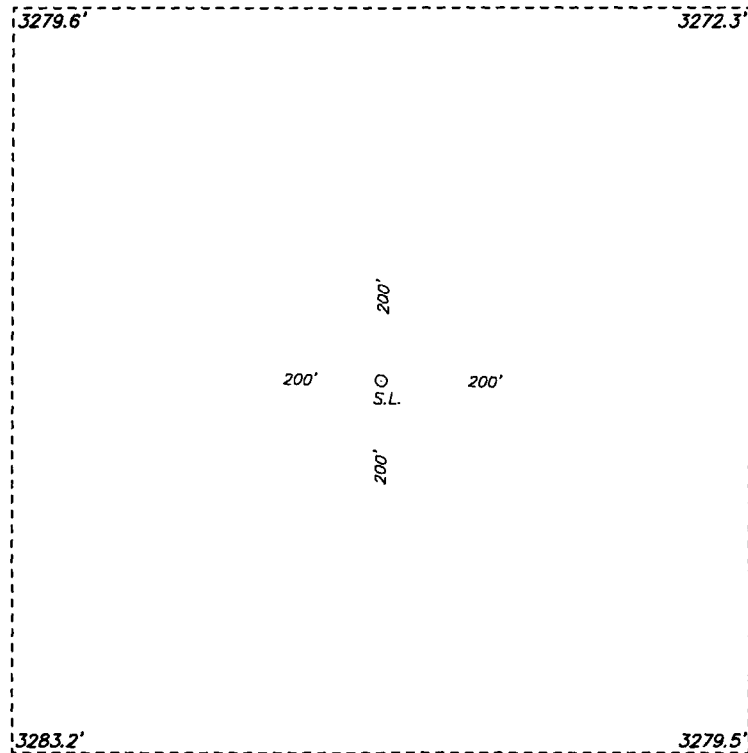
**DELAWARE ENERGY**

REF: LINDAMAN SWD #1 / WELL PAD TOPO

THE LINDAMAN SWD #1 LOCATED 1235' FROM  
 THE NORTH LINE AND 1075' FROM THE WEST LINE OF  
 SECTION 14, TOWNSHIP 24 SOUTH, RANGE 26 EAST.

N.M.P.M., EDDY COUNTY, NEW MEXICO.

**SECTION 14, TOWNSHIP 24 SOUTH, RANGE 26 EAST, N.M.P.M.,  
EDDY COUNTY, NEW MEXICO.**



**DELAWARE ENERGY**

REF: LINDAMAN SWD #1 / WELL PAD TOPO

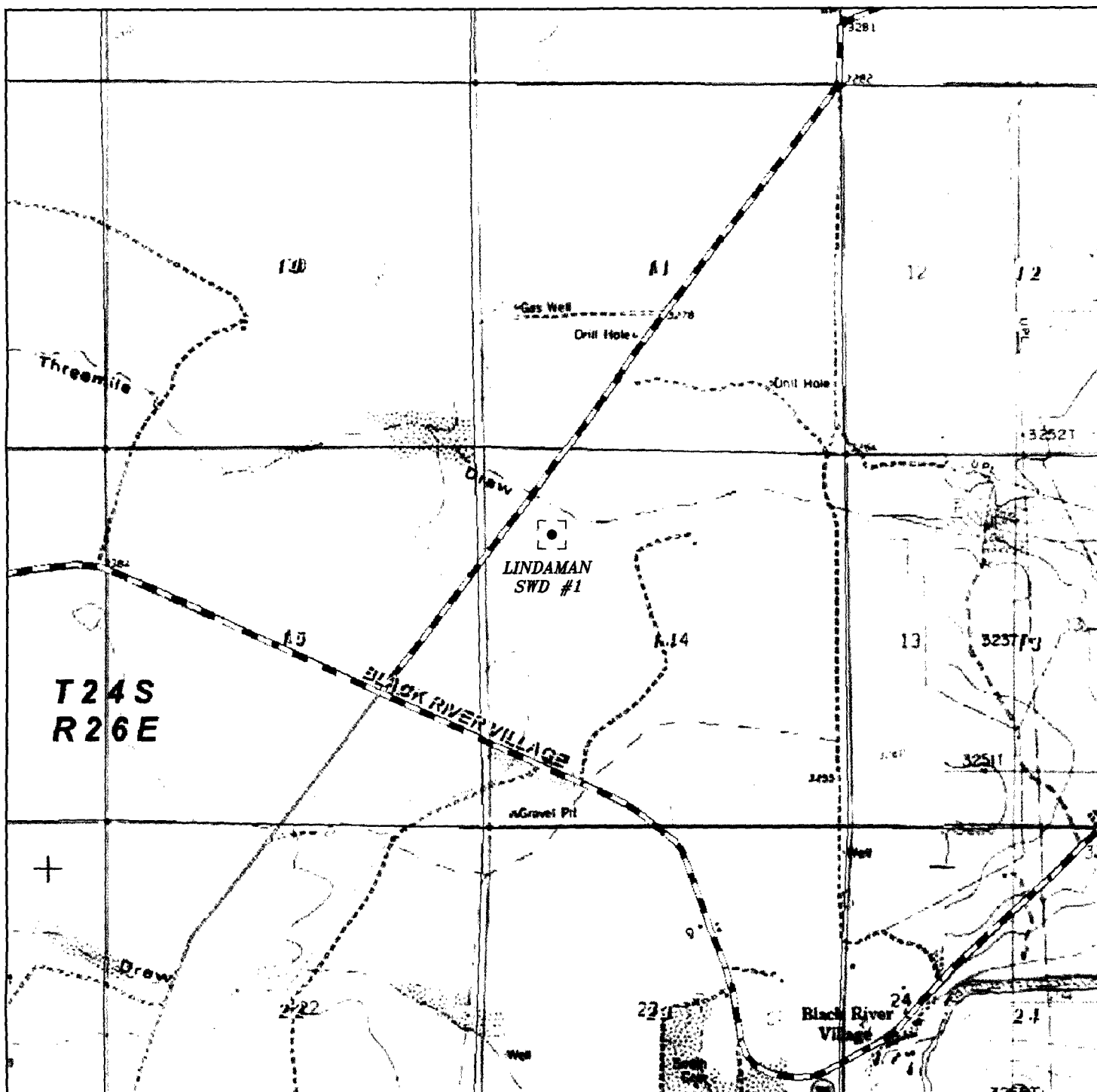
THE LINDAMAN SWD #1 LOCATED 1235' FROM  
THE NORTH LINE AND 1075' FROM THE WEST LINE OF  
SECTION 14, TOWNSHIP 24 SOUTH, RANGE 26 EAST.

N.M.P.M., EDDY COUNTY, NEW MEXICO.

**basin  
surveys**  
focused on excellence  
in the oilfield

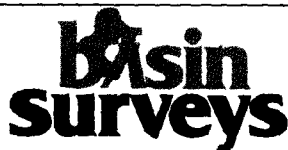
P.O. Box 1786  
1120 N. West County Rd.  
Hobbs, New Mexico 88241  
(575) 393-7316 - Office  
(575) 392-2206 - Fax  
basinsurveys.com

|                    |                   |                  |                         |                     |
|--------------------|-------------------|------------------|-------------------------|---------------------|
| W.O. Number: 33565 | Drawn By: J. GOAD | Date: 02-28-2018 | Survey Date: 02-27-2018 | Sheet 1 of 1 Sheets |
|--------------------|-------------------|------------------|-------------------------|---------------------|



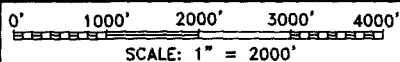
LINDAMAN SWD #1

Located 1235' FNL and 1075' FWL  
Section 14, Township 24 South, Range 26 East,  
N.M.P.M., Eddy County, New Mexico.



**focused on excellence  
in the oilfield**

P.O. Box 1786  
1120 N. West County Rd.  
Hobbs, New Mexico 88241  
(575) 393-7316 - Office  
(575) 392-2206 - Fax  
basinsurveys.com



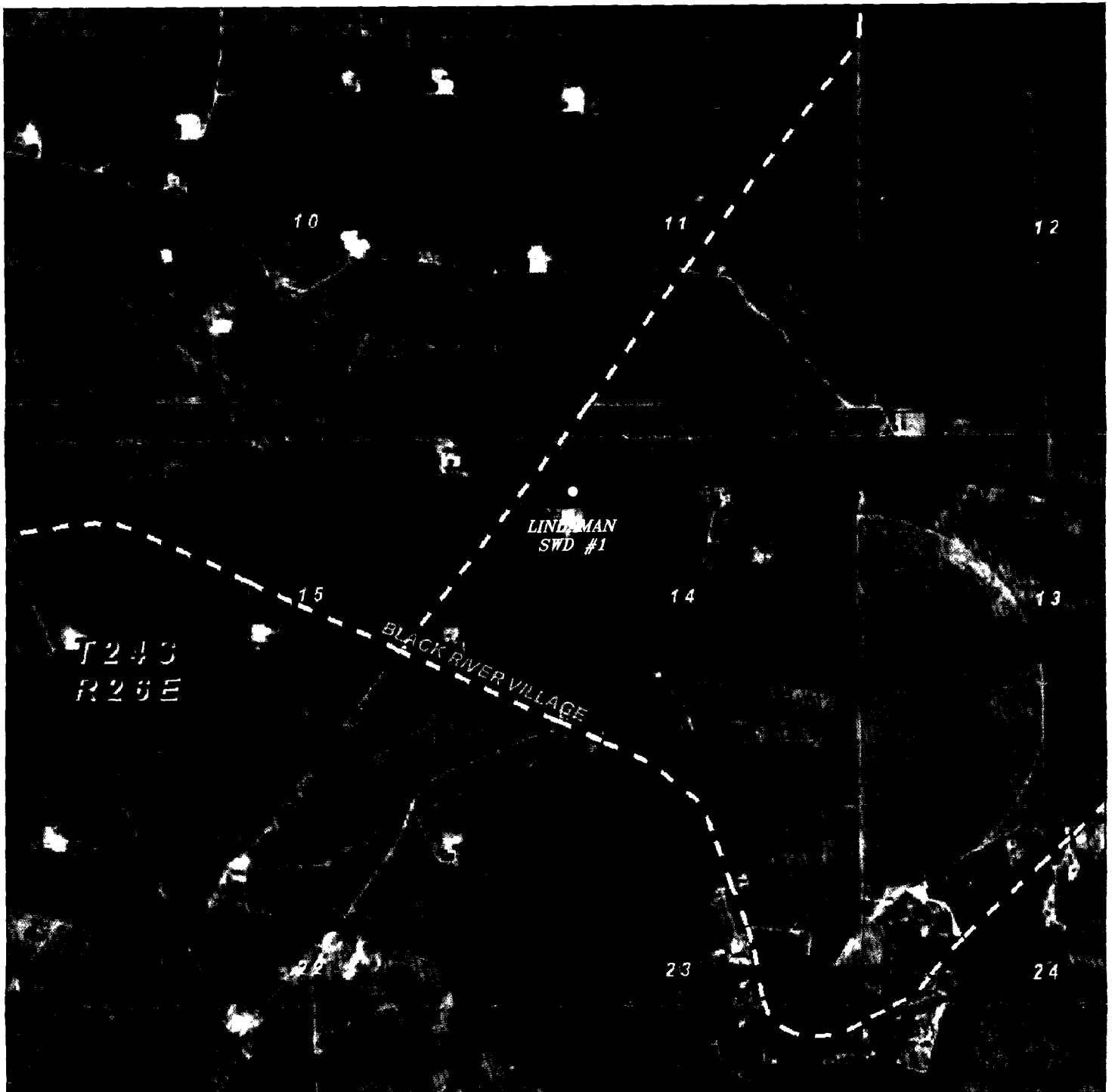
W.O. Number: JG 33565

Survey Date: 2-27-2018

YELLOW TINT - USA LAND  
BLUE TINT - STATE LAND  
NATURAL COLOR - FEE LAND



# DELAWARE ENERGY



**LINDAMAN SWD #1**  
 Located 1235' FNL and 1075' FWL  
 Section 14, Township 24 South, Range 26 East,  
 N.M.P.M., Eddy County, New Mexico.

**basin**  
**surveys**  
 focused on excellence  
 in the oilfield

P.O. Box 1786  
 1120 N. West County Rd.  
 Hobbs, New Mexico 88241  
 (575) 393-7316 - Office  
 (575) 392-2206 - Fax  
 basinsurveys.com

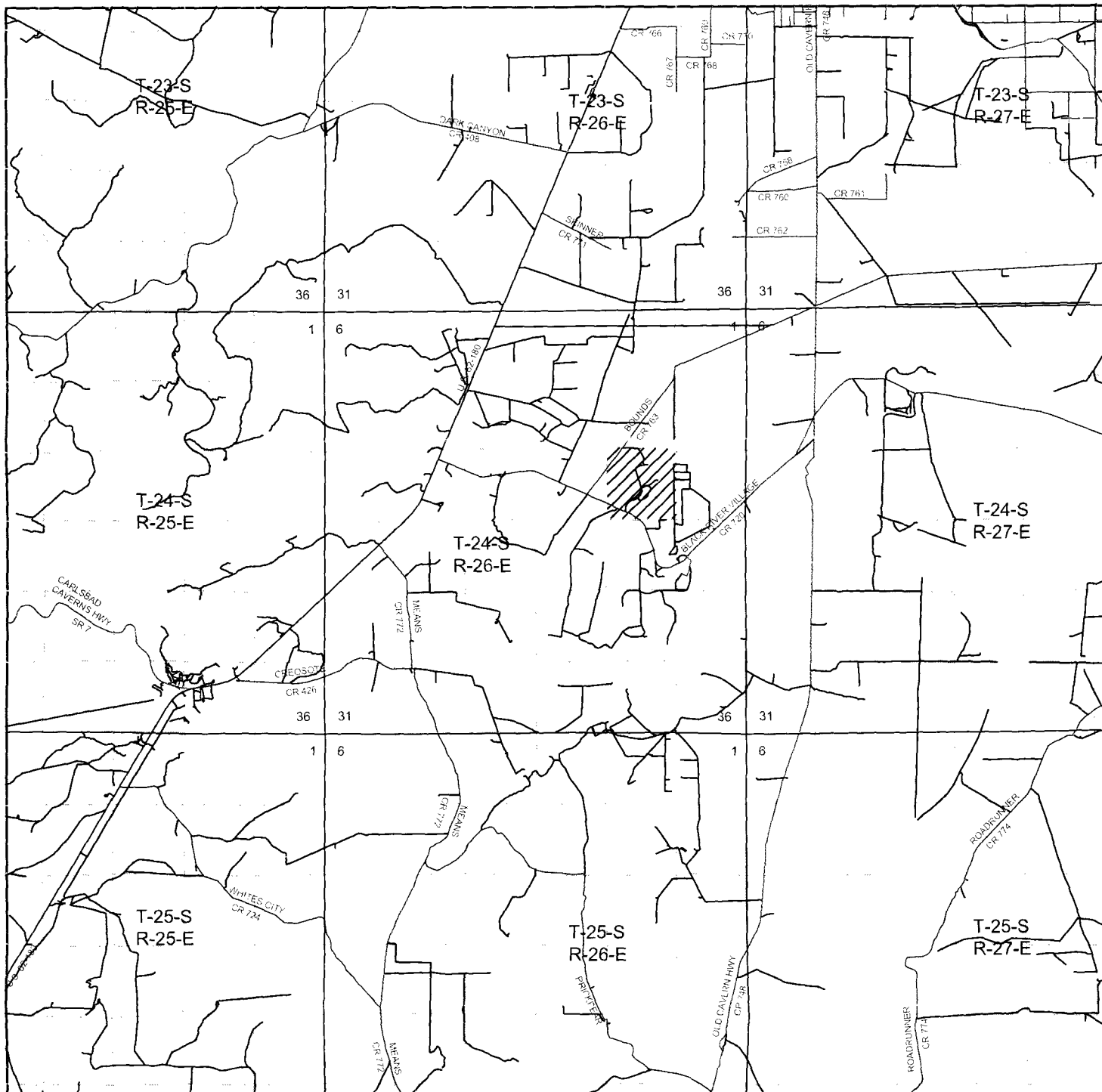
0' 1000' 2000' 3000' 4000'  
 SCALE: 1" = 2000'

W.O. Number: JG 33565

Survey Date: 2-27-2018

YELLOW TINT - USA LAND  
 BLUE TINT - STATE LAND  
 NATURAL COLOR - FEE LAND

**DELAWARE**  
**ENERGY**



# LINDAMAN SWD #1

Located 1235' FNL and 1075' FWL  
 Section 14, Township 24 South, Range 26 East,  
 N.M.P.M., Eddy County, New Mexico.

**basin**  
**surveys**

focused on excellence  
 in the oilfield

P.O. Box 1786  
 1120 N. West County Rd.  
 Hobbs, New Mexico 88241  
 (575) 393-7316 - Office  
 (575) 392-2206 - Fax  
 basinsurveys.com

0 1 MI 2 MI 3 MI 4 MI  
 SCALE: 1" = 2 MILES

W.O. Number: JG 33565

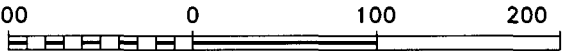
Survey Date: 2-27-2018

YELLOW TINT - USA LAND  
 BLUE TINT - STATE LAND  
 NATURAL COLOR - FEE LAND



**DELAWARE**  
**ENERGY**

SECTION 14, TOWNSHIP 24 SOUTH, RANGE 26 EAST, N.M.P.M.,  
EDDY COUNTY. NEW MEXICO.



# DELAWARE ENERGY

REF: LINDAMAN SWD #1 / CUT & FILL

THE LINDAMAN SWD #1 LOCATED 1235' FROM  
THE NORTH LINE AND 1075' FROM THE WEST LINE OF  
SECTION 14, TOWNSHIP 24 SOUTH, RANGE 26 EAST.  
N.M.P.M., EDDY COUNTY, NEW MEXICO.

**basin  
surveys**  
focused on excellence  
in the oilfield

P.O. Box 1786 (575) 393-7316 - Office  
1120 N. West County Rd. (575) 392-2206 - Fax  
Hobbs, New Mexico 88241 [basinsurveys.com](http://basinsurveys.com)