

DISTRICT I  
1625 N French Dr., Hobbs, NM 88240  
Phone (575) 393-6161 Fax (575) 393-0720  
DISTRICT II  
811 S. First St., Artesia, NM 88210  
Phone (575) 748-1283 Fax (575) 748-9720  
DISTRICT III  
1000 Rio Brazos Road, Aztec, NM 87410  
Phone (505) 334-6178 Fax (505) 334-6170  
DISTRICT IV  
1220 S. St. Francis Dr., Santa Fe, NM 87505  
Phone (505) 476-3460 Fax (505) 476-3462

State of New Mexico CONSERVATION  
Energy, Minerals & Natural Resources Department  
OIL CONSERVATION DIVISION  
1220 South St. Francis Dr.  
Santa Fe, New Mexico 87505  
RECEIVED  
APR 15 2018

Form C-102  
Revised August 1, 2011  
Submit one copy to appropriate  
District Office

AMENDED REPORT

WELL LOCATION AND ACREAGE DEDICATION PLAT

API Number <b>30-06-44277</b>	Pool Code <b>96217</b>	Pool Name <b>Willow Lake; Bone Springs SE</b>
Property Code <b>31500T 321157</b>	Property Name <b>GOLDEN CORRAL Federal</b>	Well Number <b>2H</b>
OGRID No. <b>005380</b>	Operator Name <b>XTO ENERGY</b>	Elevation <b>2905'</b>

Surface Location

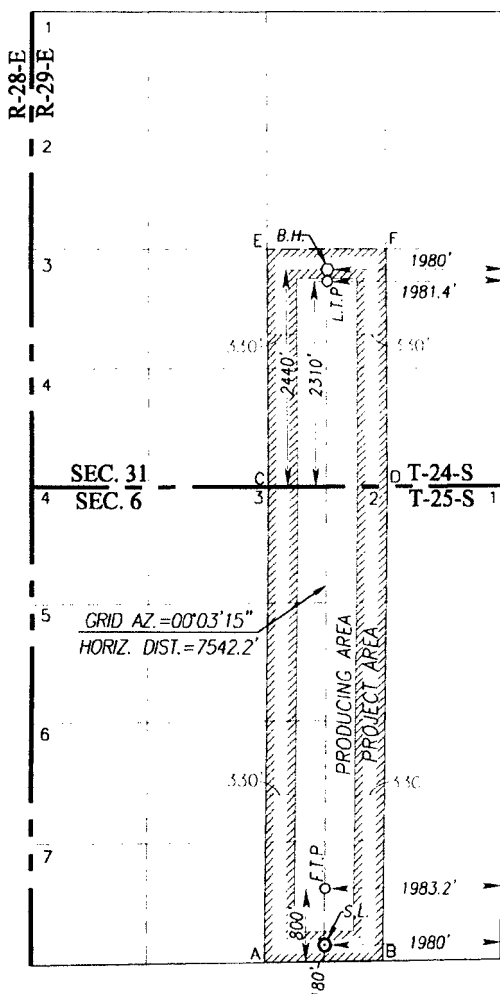
UL or lot No.	Section	Township	Range	Lot Idn	Feet from the	North/South line	Feet from the	East/West line	County
<b>O</b>	<b>6</b>	<b>25-S</b>	<b>29-E</b>		<b>180</b>	<b>SOUTH</b>	<b>1980</b>	<b>EAST</b>	<b>EDDY</b>

Bottom Hole Location If Different From Surface

UL or lot No.	Section	Township	Range	Lot Idn	Feet from the	North/South line	Feet from the	East/West line	County
<b>J</b>	<b>31</b>	<b>24-S</b>	<b>29-E</b>		<b>2440</b>	<b>SOUTH</b>	<b>1980</b>	<b>EAST</b>	<b>EDDY</b>

Dedicated Acres	Joint or Infill	Consolidation Code	Order No.
<b>240</b>			

NO ALLOWABLE WILL BE ASSIGNED TO THIS COMPLETION UNTIL ALL INTERESTS HAVE BEEN CONSOLIDATED OR A NON-STANDARD UNIT HAS BEEN APPROVED BY THE DIVISION



SCALE: 1"=2000'	
<b>GEODETIC COORDINATES</b> <b>NAD 83 NME</b> <b>BOTTOM HOLE LOCATION</b> <b>Y= 426881.8 N</b> <b>X= 637817.5 E</b> <b>LAT.=32.173192° N</b> <b>LONG.=104.021508° W</b> <b>LAST TAKE POINT</b> <b>NAD 83 NME</b> <b>Y= 426751.8 N</b> <b>X= 637817.4 E</b> <b>LAT.=32.172834° N</b> <b>LONG.=104.021510° W</b>	<b>GEODETIC COORDINATES</b> <b>NAD 27 NME</b> <b>BOTTOM HOLE LOCATION</b> <b>Y= 426823.3 N</b> <b>X= 596633.4 E</b> <b>LAT.=32.173069° N</b> <b>LONG.=104.021020° W</b> <b>LAST TAKE POINT</b> <b>NAD 27 NME</b> <b>Y= 426693.3 N</b> <b>X= 596633.3 E</b> <b>LAT.=32.172711° N</b> <b>LONG.=104.021022° W</b>
<b>CORNER COORDINATES TABLE</b> <b>NAD 27 NME</b> <b>A - Y= 419090.8 N, X= 595949.4 E</b> <b>B - Y= 419114.6 N, X= 597277.1 E</b> <b>C - Y= 424379.3 N, X= 595978.8 E</b> <b>D - Y= 424388.4 N, X= 597307.8 E</b> <b>E - Y= 427051.4 N, X= 595960.0 E</b> <b>F - Y= 427057.5 N, X= 597288.3 E</b>	
<b>CORNER COORDINATES TABLE</b> <b>NAD 83 NME</b> <b>A - Y= 419149.1 N, X= 637133.7 E</b> <b>B - Y= 419172.9 N, X= 638461.4 E</b> <b>C - Y= 424437.8 N, X= 637163.0 E</b> <b>D - Y= 424446.9 N, X= 638492.0 E</b> <b>E - Y= 427109.9 N, X= 637144.2 E</b> <b>F - Y= 427116.0 N, X= 638472.5 E</b>	
<b>FIRST TAKE POINT</b> <b>NAD 83 NME</b> <b>Y= 419961.2 N</b> <b>X= 637811.0 E</b> <b>LAT.=32.154168° N</b> <b>LONG.=104.021594° W</b>	<b>FIRST TAKE POINT</b> <b>NAD 27 NME</b> <b>Y= 419902.9 N</b> <b>X= 596626.7 E</b> <b>LAT.=32.154045° N</b> <b>LONG.=104.021107° W</b>
<b>SURFACE LOCATION</b> <b>NAD 83 NME</b> <b>Y=419341.3 N</b> <b>X=637810.4 E</b> <b>LAT.=32.152464° N</b> <b>LONG.=104.021602° W</b>	<b>SURFACE LOCATION</b> <b>NAD 27 NME</b> <b>Y=419282.9 N</b> <b>X=596626.1 E</b> <b>LAT.=32.152340° N</b> <b>LONG.=104.021114° W</b>

OPERATOR CERTIFICATION	
I hereby certify that the information herein is true and complete to the best of my knowledge and belief, and that this organization either owns a working interest or unleased mineral interest in the land including the proposed bottom hole location or has a right to drill this well at this location pursuant to a contract with an owner of such mineral or working interest, or to a voluntary pooling agreement or a compulsory pooling order heretofore entered by the division.	
Signature <b>Stephanie Rabadiue</b>	Date
Printed Name <b>Stephanie Rabadiue</b>	
E-mail Address <b>Stephanie-rabadiue@xtoenergy.com</b>	

SURVEYOR CERTIFICATION	
I hereby certify that the well location shown on this plat was plotted from field notes of actual surveys made by me or under my supervision, and that the same is true and correct to the best of my knowledge.	
Date of Survey <b>June 1, 2017</b>	Signature <b>Ronald J. Eidson</b>
3239 REGISTERED PROFESSIONAL SURVEYOR	
Certificate Number <b>Gary G. Eidson 12641</b>	<b>Ronald J. Eidson 3239</b>
ACK REL W.O.:17130514	FWSC W.O.: 17.11.0572

RWP 4-9-18



Stephanie Rabadue  
Regulatory Analyst  
XTO Energy Inc.  
500 W. Illinois St Ste 100  
Midland, Texas 79701  
(432) 620-6714  
stephanie\_rabadue@xtoenergy.com

July 1, 2017

Bureau of Land Management  
Carlsbad Field Office  
620 E. Greene Street  
Carlsbad, NM 88220

RE: Operating Agreement/Rights for Golden Corral Federal 2H, Cattle Baron Federal 2H, Roadhouse  
Federal 1H, Roadhouse Federal 2H, Sizzler Federal 2H

To Whom It May Concern:

This is to hereby certify that XTO Energy, Inc. is has operating rights over: NMNM 111533 through  
acreage trades, acquisitions, and pooling orders.

Stephanie Rabadue  
Regulatory Analyst  
XTO Energy, Inc