

DISTRICT I
1625 N French Dr., Hobbs, NM 88240
Phone: (505) 393-6161 Fax: (505) 393-0720
DISTRICT II
1000 W. Broadway, NM 87410
Phone: (505) 393-6175 Fax: (505) 334-6170
DISTRICT III
1220 S. St. Francis Dr., Santa Fe, NM 87505
Phone: (505) 476-3460 Fax: (505) 476-3462

State of New Mexico
Energy, Minerals & Natural Resources Department
OIL CONSERVATION DIVISION
1220 South St. Francis Dr.
Santa Fe, New Mexico 87505

Form C-102
Revised August 1, 2011
Submit one copy to appropriate
District Office
☐ AMENDED REPORT

WELL LOCATION AND ACREAGE DEDICATION PLAT

API Number 30-015-44380	Pool Code 98390	Pool Name Rurple Sage; Wolfcamp
Property Code 317098 321173	Property Name Gizker Federal	Well Number 2H
OGRID No. 005380	Operator Name XTO ENERGY	Elevation 2913'

Surface Location

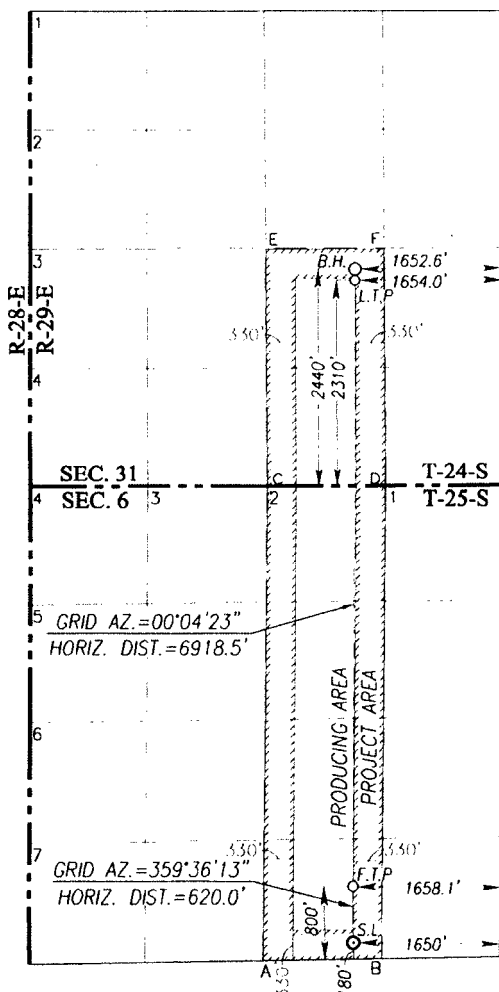
Ul. or lot No.	Section	Township	Range	Lot Idn	Feet from the	North/South line	Feet from the	East/West line	County
O	6	25-S	29-E		180	SOUTH	1650	EAST	EDDY

Bottom Hole Location If Different From Surface

Ul. or lot No.	Section	Township	Range	Lot Idn	Feet from the	North/South line	Feet from the	East/West line	County
J	31	24-S	29-E		2440	SOUTH	1652.6	EAST	EDDY

Dedicated Acres 480	Joint or Infill	Consolidation Code	Order No. NSP Pending
-------------------------------	-----------------	--------------------	---------------------------------

NO ALLOWABLE WILL BE ASSIGNED TO THIS COMPLETION UNTIL ALL INTERESTS HAVE BEEN CONSOLIDATED OR A NON-STANDARD UNIT HAS BEEN APPROVED BY THE DIVISION



SCALE: 1"=2000'

GEODETIC COORDINATES		GEODETIC COORDINATES	
NAD 83 NME		NAD 27 NME	
BOTTOM HOLE LOCATION		BOTTOM HOLE LOCATION	
Y= 426884.0 N	X= 638144.9 E	Y= 426825.5 N	X= 596960.7 E
LAT.=32.173195° N	LONG.=104.020450° W	LAT.=32.173072° N	LONG.=104.019962° W
LAST TAKE POINT		LAST TAKE POINT	
NAD 83 NME		NAD 27 NME	
Y= 426754.1 N	X= 638144.7 E	Y= 426695.6 N	X= 596960.6 E
LAT.=32.172838° N	LONG.=104.020452° W	LAT.=32.172715° N	LONG.=104.019964° W
CORNER COORDINATES TABLE			
NAD 27 NME			
A - Y= 419090.8 N, X= 595949.4 E	B - Y= 419114.6 N, X= 597277.1 E	C - Y= 424379.3 N, X= 595978.8 E	D - Y= 424388.4 N, X= 597307.8 E
E - Y= 427051.4 N, X= 595960.0 E	F - Y= 427057.5 N, X= 597288.3 E		
CORNER COORDINATES TABLE			
NAD 83 NME			
A - Y= 419149.1 N, X= 637133.7 E	B - Y= 419172.9 N, X= 638461.4 E	C - Y= 424437.8 N, X= 637163.0 E	D - Y= 424446.9 N, X= 638492.0 E
E - Y= 427109.9 N, X= 637144.2 E	F - Y= 427116.0 N, X= 638472.5 E		
FIRST TAKE POINT		FIRST TAKE POINT	
NAD 83 NME		NAD 27 NME	
Y= 419967.1 N	X= 638136.1 E	Y= 419908.7 N	X= 596951.8 E
LAT.=32.154181° N	LONG.=104.020544° W	LAT.=32.154058° N	LONG.=104.020056° W
SURFACE LOCATION		SURFACE LOCATION	
NAD 83 NME		NAD 27 NME	
Y=419347.2 N	X=638140.4 E	Y=419288.8 N	X=596956.0 E
LAT.=32.152477° N	LONG.=104.020536° W	LAT.=32.152354° N	LONG.=104.020048° W

OPERATOR CERTIFICATION

I hereby certify that the information herein is true and complete to the best of my knowledge and belief, and that this organization either owns a working interest or unleased mineral interest in the land including the proposed bottom hole location or has a right to drill this well at this location pursuant to a contract with an owner of such mineral or working interest, or to a voluntary pooling agreement or a compulsory pooling order heretofore entered by the division.

Signature: **Stephanie Rabadiere** Date: **7-1-17**
Printed Name: **Stephanie Rabadiere**
E-mail Address: **xtoenergy.com**

SURVEYOR CERTIFICATION

I hereby certify that the well location shown on this plat was plotted from field notes of actual surveys made by me or under my supervision, and that the same is true and correct to the best of my belief.

Date of Survey: **JUNE 1, 2017**
Signature of Professional Surveyor: **RONALD J. EIDSON**

NEW MEXICO
3239
Certificate Number: **3239**
Ronald J. Eidson
ACK REV 6/21/17 REL W.O.:17130472 JWSC W.O.:17110565

Ref 4-9-18



Stephanie Rabadue
Regulatory Analyst
XTO Energy Inc.
500 W. Illinois St Ste 100
Midland, Texas 79701
(432) 620-6714
stephanie_rabadue@xtoenergy.com

July 1, 2017

Bureau of Land Management
Carlsbad Field Office
620 E. Greene Street
Carlsbad, NM 88220

RE: Operating Agreement/Rights for Golden Corral Federal 2H, Cattle Baron Federal 2H, Roadhouse
Federal 1H, Roadhouse Federal 2H, Sizzler Federal 2H

To Whom It May Concern:

This is to hereby certify that XTO Energy, Inc. is has operating rights over: NMNM 111533 through
acreage trades, acquisitions, and pooling orders.

Stephanie Rabadue
Regulatory Analyst
XTO Energy, Inc