

District I
1625 N. French Dr., Hobbs, NM 88240
Phone: (575) 393-6161 Fax: (575) 393-0720
District II
811 S. First St., Artesia, NM 88210
Phone: (575) 748-1283 Fax: (575) 748-9720
District III
1000 Rio Brazos Road, Aztec, NM 87410
Phone: (505) 334-6178 Fax: (505) 334-6170
District IV
1220 S. St. Francis Dr., Santa Fe, NM 87505
Phone: (505) 476-3460 Fax: (505) 476-3462

State of New Mexico
Energy, Minerals & Natural Resources Department
OIL CONSERVATION DIVISION
1220 South St. Francis Dr.
Santa Fe, NM 87505

Form C-102
Revised August 1, 2011
Submit one copy to appropriate
District Office

APR 10 2018

☐ AMENDED REPORT

WELL LOCATION AND ACREAGE DEDICATION PLAT

| | | |
|--|---|--|
| ¹ API Number 30-015-44872 | ² Pool Code 98220 | ³ Pool Name PURPLE SAGE; WOLFCAMP (GAS) |
| ⁴ Property Code 321184 | ⁵ Property Name SQUIRREL MASTER FEE 23-28-5 WD | ⁶ Well Number 2H |
| ⁷ OGRID No. 372098 | ⁸ Operator Name MARATHON OIL PERMIAN LLC | ⁹ Elevation 3030' |

¹⁰ Surface Location

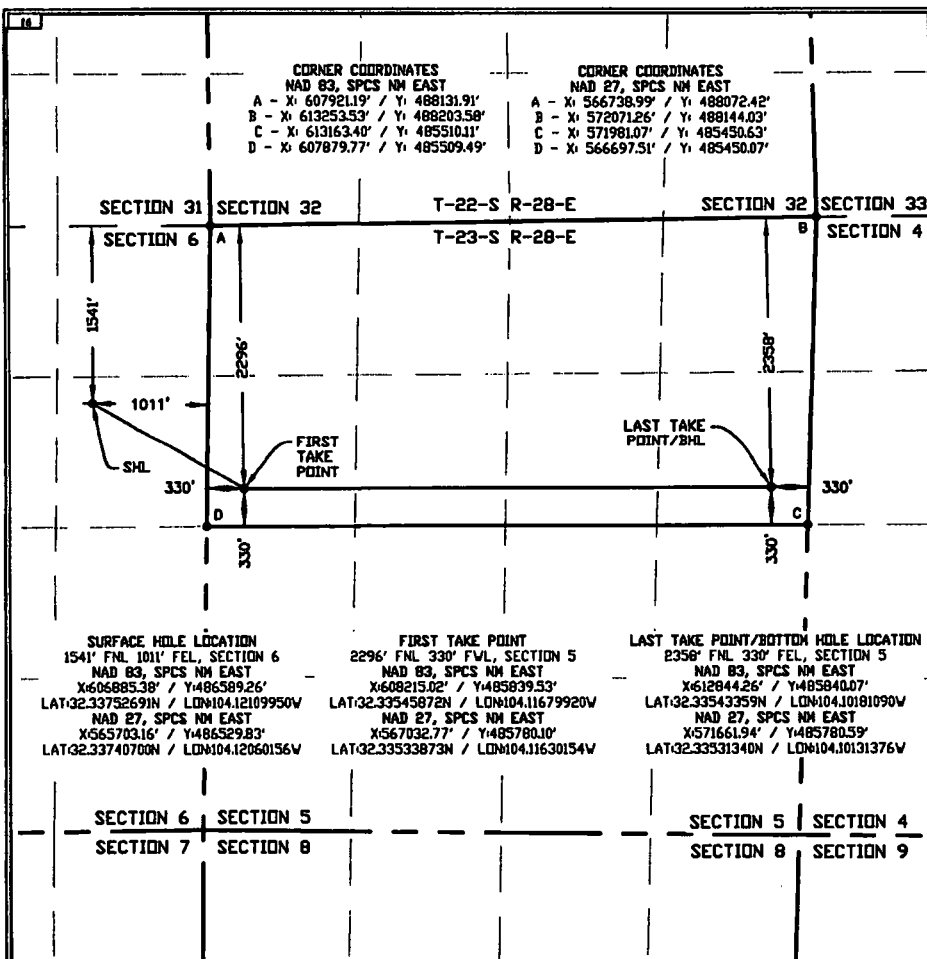
| UL or lot no. | Section | Township | Range | Lot Idn | Feet from the | North/South line | Feet from the | East/West line | County |
|---------------|---------|----------|-------|---------|---------------|------------------|---------------|----------------|--------|
| H | 6 | 23S | 28E | | 1541 | NORTH | 1011 | EAST | EDDY |

¹¹ Bottom Hole Location If Different From Surface

| UL or lot no. | Section | Township | Range | Lot Idn | Feet from the | North/South line | Feet from the | East/West line | County |
|---------------|---------|----------|-------|---------|---------------|------------------|---------------|----------------|--------|
| H | 5 | 23S | 28E | | 2358 | NORTH | 330 | EAST | EDDY |

| | | | |
|--|-------------------------------|----------------------------------|-------------------------|
| ¹² Dedicated Acres 320.00 | ¹³ Joint or Infill | ¹⁴ Consolidation Code | ¹⁵ Order No. |
|--|-------------------------------|----------------------------------|-------------------------|

No allowable will be assigned to this completion until all interests have been consolidated or a non-standard unit has been approved by the division.



¹⁷ OPERATOR CERTIFICATION

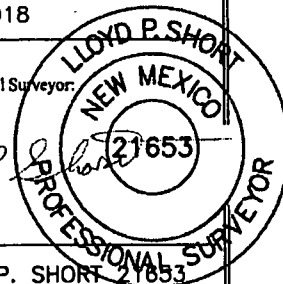
I hereby certify that the information contained herein is true and complete to the best of my knowledge and belief, and that this organization either owns a working interest or unleased mineral interest in the land including the proposed bottom hole location or has a right to drill this well at this location pursuant to a contract with an owner of such a mineral or working interest, or to a voluntary pooling agreement or a compulsory pooling order heretofore entered by the division.

Signature: *[Signature]* Date: **04/09/2018**
Printed Name: **Melissa Szudera**
E-mail Address: **mszudera@marathonoil.com**

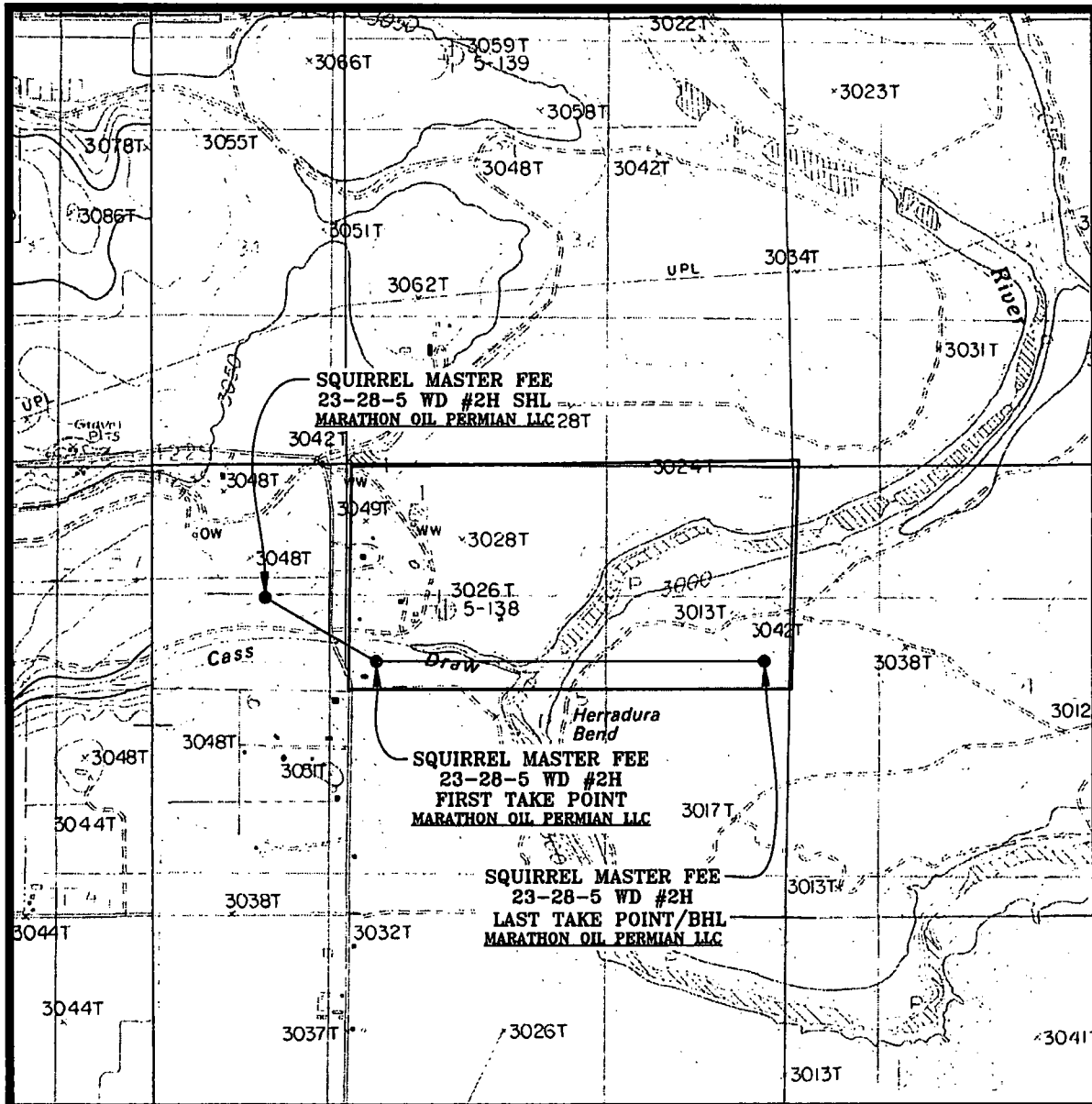
¹⁸ SURVEYOR CERTIFICATION

I hereby certify that the well location shown on this plat was plotted from field notes of actual surveys made by me or under my supervision, and that the same is true and correct to the best of my belief.

APRIL 09, 2018
Date of Survey
Signature and Seal of Professional Surveyor: *[Signature]*
Certificate Number: **LLOYD P. SHORT 21653**



LOCATION VERIFICATION MAP

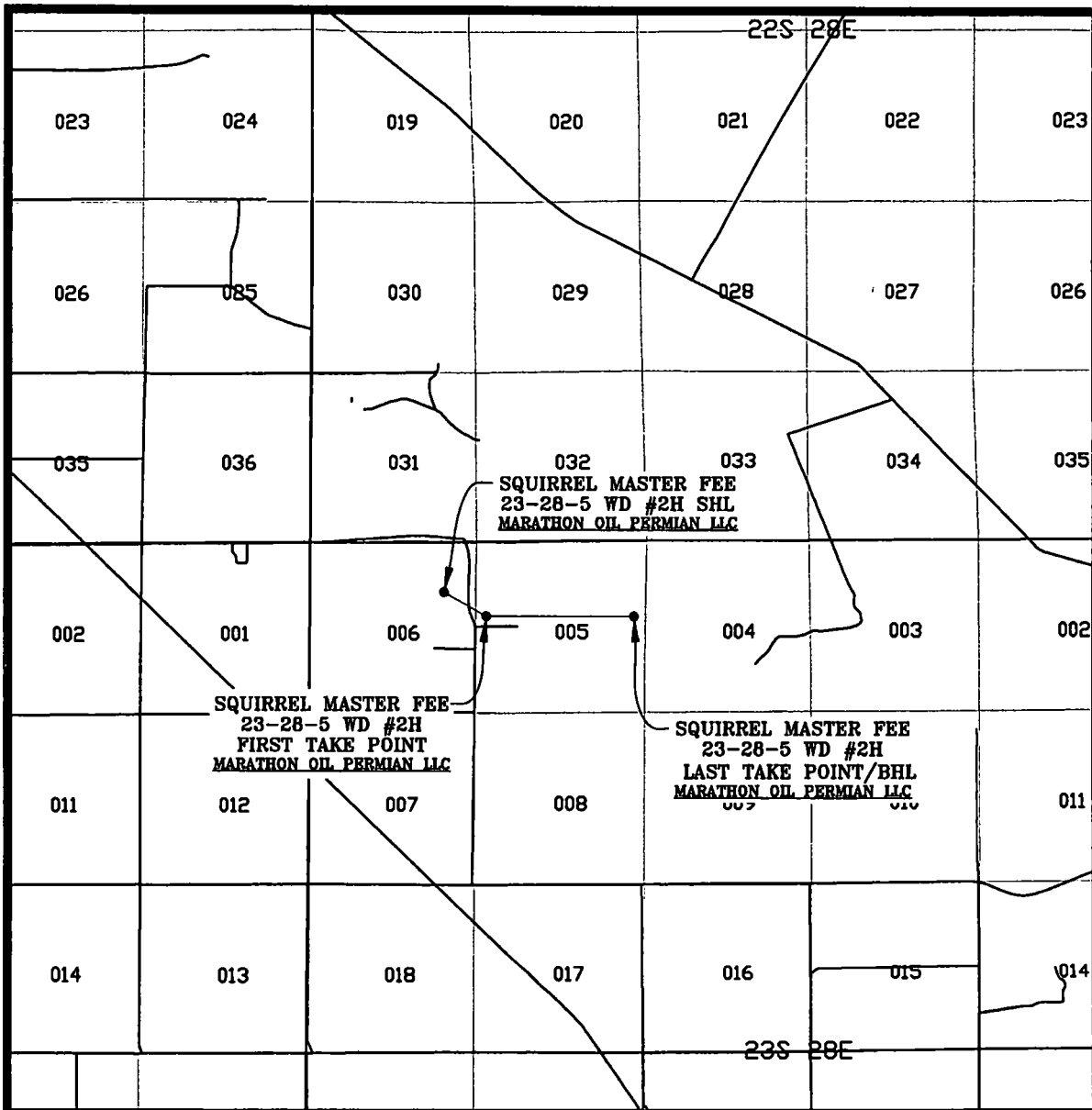


SEC. 6 TWP. 23-S RGE. 28-E
 SURVEY: N.M.P.M.
 COUNTY: EDDY
 DESCRIPTION: 1541' FNL & 1011' FEL
 ELEVATION: 3030'
 OPERATOR: MARATHON OIL PERMIAN LLC
 LEASE: SQUIRREL MASTER FEE 23-28-5
 U.S.G.S. TOPOGRAPHIC MAP: LOVING, N.M.

SCALE: 1" = 2000'
 CONTOUR INTERVAL = 10'

PREPARED BY:
 R-SQUARED GLOBAL, LLC
 1309 LOUISVILLE AVENUE, MONROE, LA 71201
 318-323-8800 OFFICE
 JOB No. R3875_001

VICINITY MAP



SEC. 6 TWP. 23-S RGE. 28-E
 SURVEY: N.M.P.M.
 COUNTY: EDDY
 DESCRIPTION: 1541' FNL & 1011' FEL
 ELEVATION: 3030'
 OPERATOR: MARATHON OIL PERMIAN LLC
 LEASE: SQUIRREL MASTER FEE 23-28-5
 U.S.G.S. TOPOGRAPHIC MAP: LOVING, N.M.

SCALE: 1" = 1 MILE

PREPARED BY:
 R-SQUARED GLOBAL, LLC
 1309 LOUISVILLE AVENUE, MONROE, LA 71201
 318-323-6900 OFFICE
 JOB No. R3875_001