

District I  
1625 N. French Dr., Hobbs, NM 88240  
Phone: (575) 393-6161 Fax: (575) 393-0720  
District II  
811 S. First St., Artesia, NM 88210  
Phone: (575) 748-1283 Fax: (575) 748-9720  
District III  
1000 Rio Bravo Road, Aztec, NM 87410  
Phone: (505) 334-6178 Fax: (505) 334-6170  
District IV  
1220 S. St. Francis Dr., Santa Fe, NM 87505  
Phone: (505) 476-3460 Fax: (505) 476-3462

State of New Mexico **NM OIL CONSERVATION** Form C-102  
Energy, Minerals & Natural Resources Department **ARTESIA DISTRICT** Revised August 1, 2011  
**OIL CONSERVATION DIVISION** Submit one copy to appropriate District Office  
1220 South St. Francis Dr APR 16 2018  
Santa Fe, NM 87505

**RECEIVED** ☒ **AMENDED REPORT**

**WELL LOCATION AND ACREAGE DEDICATION PLAT**

API Number 30-015-44510	Pool Code 96473	Pool Name Pierce Crossing, Bone Spring, East
Property Code 319797	Property Name <b>CORRAL FLY "02-01" STATE</b>	Well Number 24H
OGRID No 16696	Operator Name <b>OXY USA INC</b>	Elevation 3026 4'

**Surface Location**

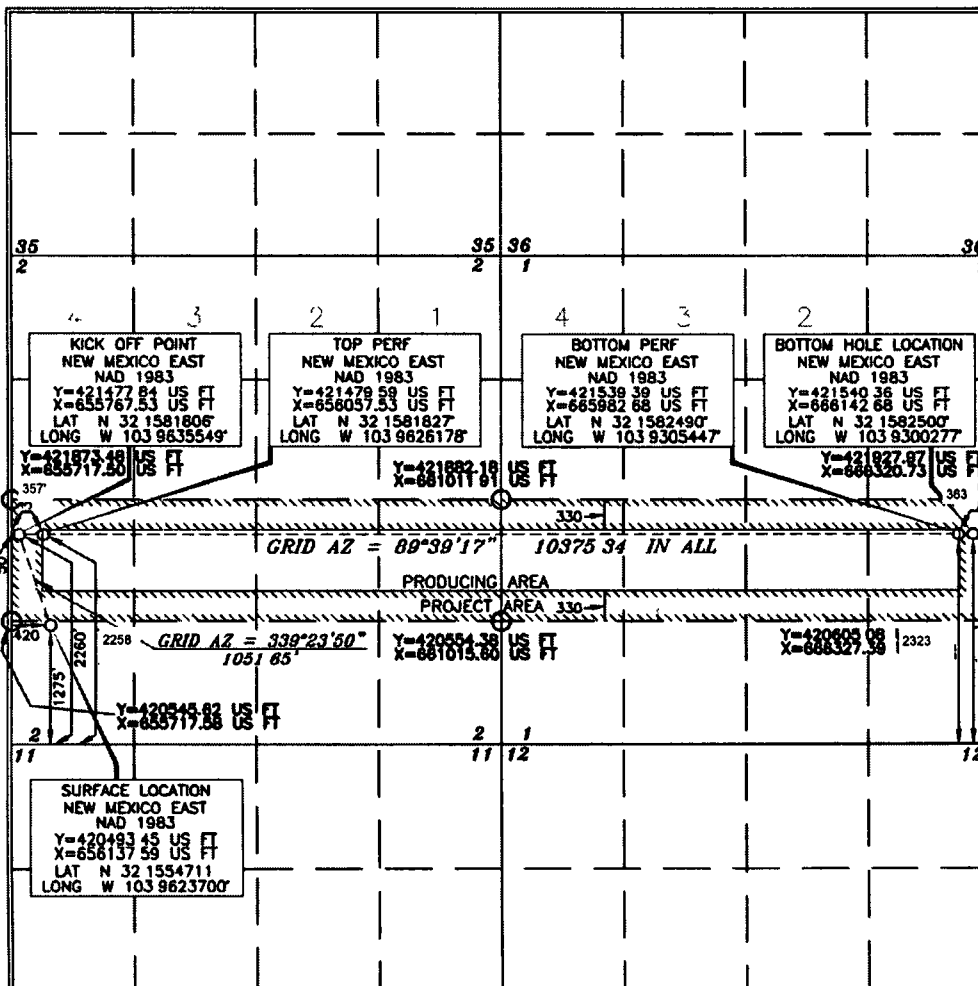
UL or lot no	Section	Township	Range	Lot Idn	Feet from the	North/South line	Feet from the	East/West line	County
M	2	25 SOUTH	29 EAST, N M P M		1275'	SOUTH	420'	WEST	EDDY

**Bottom Hole Location If Different From Surface**

UL or lot no	Section	Township	Range	Lot Idn	Feet from the	North/South line	Feet from the	East/West line	County
I	1	25 SOUTH	29 EAST, N M P M		2327'	SOUTH	209'	EAST	EDDY

Dedicated Acres	Joint or Infill	Consolidation Code	Order No.
320	Y		TP 2258 FSL 357 FWL BP 2323 FSL 363 FEL

No allowable will be assigned to this completion until all interests have been consolidated or a non-standard unit has been approved by the division



**OPERATOR CERTIFICATION**

I hereby certify that the information contained herein is true and complete to the best of my knowledge and belief, and that this organization either owns a working interest or unleased mineral interest in the land including the proposed bottom hole location or has a right to drill this well at this location pursuant to a contract with an owner of such a mineral or working interest, or to a voluntary pooling agreement or a compulsory pooling order heretofore entered by the division.

Signature: Sarah Mitchell Date: 4/11/18

Printed Name: Sarah Mitchell

E-mail Address: sarah\_mitchell@oxy.com

**SURVEYOR CERTIFICATION**

I hereby certify that the well location shown on this plat was plotted from field notes of actual surveys made by me or under my supervision, and that the same is true and correct to the best of my belief.

Date of Survey: AUGUST 18, 2017

Signature and Seal of Professional Surveyor: [Signature]

Certificate Number: 15079

WO# 170818WL-a-XY (KA)