

District I  
1625 N. French Dr., Hobbs, NM 88240  
District II  
1301 W. Grand Avenue, Artesia, NM 88210  
District III  
1000 Rio Brazos Road, Aztec, NM 87410  
District IV  
1220 S. St. Francis Dr., Santa Fe, NM 87505

State of New Mexico  
Energy Minerals and Natural Resources

Form C-101  
May 27, 2004

Oil Conservation Division  
1220 South St. Francis Dr.  
Santa Fe, NM 87505

RECEIVED Submit to appropriate District Office  
APR 20 2006 ☐ AMENDED REPORT

OCD-ARTESIA

APPLICATION FOR PERMIT TO DRILL, RE-ENTER, DEEPEN, PLUGBACK, OR ADD A ZONE

MARBOB ENERGY CORPORATION PO BOX 227 ARTESIA, NM 88211-0227		14049		OGRID Number	
Property Code 33128		30-015-32473		API Number	
Property Name PECOS 32 STATE		Well No. 3			
Proposed Pool 1 MCMILLAN; ATOKA (GAS)		Proposed Pool 2 MCMILLAN; UPPER PENN (GAS)			

PROPOSED POOL 3: MCMILLAN; WOLFCAMP (GAS) PROPOSED POOL 4: MCMILLAN; BONE SPRING

UL or lot no.	Section	Township	Range	Lot Idn	Feet from the	North/South line	Feet from the	East/West line	County
N	32	19S	27E		990	SOUTH	1980	WEST	EDDY

Proposed Bottom Hole Location If Different From Surface

UL or lot no.	Section	Township	Range	Lot Idn	Feet from the	North/South line	Feet from the	East/West line	County

Additional Well Information

Work Type Code P	Well Type Code G	Cable/Rotary R	Lease Type Code S	Ground Level Elevation 3379' GL
Multiple N	Proposed Depth 10760'	Formation MORROW	Contractor	Spud Date 2/2/05
Depth to Groundwater		Distance from nearest fresh water well		Distance from nearest surface water
Pit: Liner: Synthetic <input type="checkbox"/> _____mils thick Clay <input type="checkbox"/> Pit Volume: _____bbls Drilling Method: _____ Closed-Loop System <input type="checkbox"/> Fresh Water <input type="checkbox"/> Brine <input type="checkbox"/> Diesel/Oil-based <input type="checkbox"/> Gas/Air <input type="checkbox"/>				

EXISTING

Proposed Casing and Cement Program

Hole Size	Casing Size	Casing weight/foot	Setting Depth	Sacks of Cement	Estimated TOC
17 1/2"	13 3/8"	54.5#	251'	325 SX	0
12 1/4"	9 5/8"	36#	2205'	550 SX	0
8 3/4"	5 1/2"	17#	10703'	1800 SX	1800'

Describe the proposed program. If this application is to DEEPEN or PLUG BACK, give the data on the present productive zone and proposed new productive zone. Describe the blowout prevention program, if any. Use additional sheets if necessary.

RECOMPLETE IN THE ATOKA, PENN, WOLFCAMP & BONE SPRING AS FOLLOWS:

SET CIBP + 35' CMT @ 10075'. PERF ATOKA @ 9655'-66' (28). FLOW/SWAB TEST. ACDZ W/ 750 GAL CLAY SAFE H. SWAB/FLOW TEST. PLUG BACK METHOD TO BE DETERMINED. PERF PENN @ 8811'-9398' (27). INSTALL 10K FRAC VLV. ACDZ W/ 3000 GAL NEFE 15% HCL. SWAB/FLOW TEST. PLUG BACK METHOD TO BE DETERMINED. PERF WOLFCAMP @ 7985'-98' (14). ACDZ W/ 1000 GAL NEFE 15% HCL. SWAB/FLOW TEST. PERF 3RD BONE SPRING @ 7578'-90' (39). ACDZ W/ 1000 GAL NEFE 7 1/2% HCL. INSTALL FRAC VLV & FRAC DOWN CSG W/ 240K# 16/30 SAND. PLUG BACK METHOD TO BE DETERMINED. PERF 1ST BONE SPRING @ 5516'-26' (33). ACDZ W/ 1000 GAL NEFE 7 1/2% HCL. SWAB TEST. INSTALL FRAC VLV & FRAC DOWN CSG W/ 200K# 16/30 SAND. PLUG BACK METHOD TO BE DETERMINED. PERF BONE SPRING LIME @ 5270'-78' (9). ACDZ W/ 1000 GAL NEFE 15% HCL. SWAB/FLOW TEST.

I hereby certify that the information given above is true and complete to the best of my knowledge and belief. I further certify that the drilling pit will be constructed according to NMOC guidelines ☐ a general permit ☐ or an (attached) alternative OCD-approved plan ☐

OIL CONSERVATION DIVISION	
Approved by: <i>[Signature]</i>	
District II Supervisor	
APR 23 2006	
Printed name: DIANA J. BRIGGS	Approval Date: APR 23 2006
Title: PRODUCTION ANALYST	Expiration Date: APR 23 2007
E-mail Address: PRODUCTION@MARBOB.COM	
Date: 4/19/06	Phone: (505) 748-3303
Conditions of Approval Attached <input type="checkbox"/>	

DISTRICT I  
P.O. Box 1368, Hobbs, NM 88241-1368

DISTRICT II  
P.O. Box 88, Artesia, NM 88211-0088

DISTRICT III  
1000 Rio Grande Rd., Aztec, NM 87410

DISTRICT IV  
P.O. Box 2088, Santa Fe, N.M. 87504-2088

State of New Mexico

Energy, Minerals and Natural Resources Department

OIL CONSERVATION DIVISION

P.O. Box 2088  
Santa Fe, New Mexico 87504-2088

Form C-102  
Revised February 10, 1984  
Submit to Appropriate District Office  
State Lease - 4 Copies  
Fee Lease - 3 Copies

WELL LOCATION AND ACREAGE DEDICATION PLAT

☐ AMENDED REPORT

API Number <b>30-015-32473</b>	Pool Code <b>81210</b>	Pool Name <b>MCMILLAN; ATOKA (GAS)</b>
Property Code <b>33128</b>	Property Name <b>PECOS "32" STATE</b>	Well Number <b>3</b>
OGRID No. <b>14049</b>	Operator Name <b>MARBOB ENERGY CORPORATION</b>	Elevation <b>3379'</b>

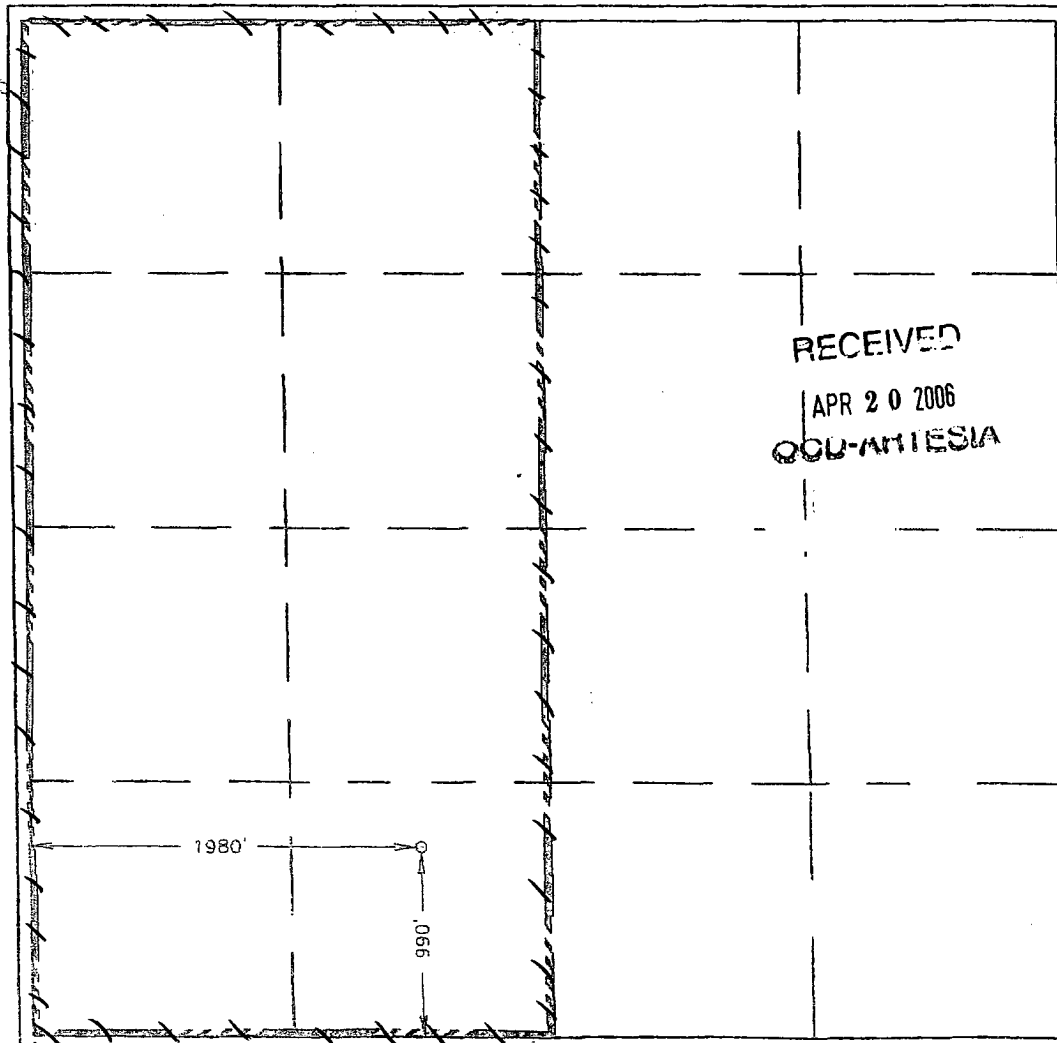
Surface Location

UL or lot No.	Section	Township	Range	Lot Idn	Feet from the	North/South line	Feet from the	East/West line	County
N	32	19-S	27-E		990	SOUTH	1980	WEST	EDDY

Bottom Hole Location If Different From Surface

UL or lot No.	Section	Township	Range	Lot Idn	Feet from the	North/South line	Feet from the	East/West line	County
Dedicated Acres <b>320</b>	Joint or Infill	Consolidation Code	Order No.						

NO ALLOWABLE WILL BE ASSIGNED TO THIS COMPLETION UNTIL ALL INTERESTS HAVE BEEN CONSOLIDATED  
OR A NON-STANDARD UNIT HAS BEEN APPROVED BY THE DIVISION



OPERATOR CERTIFICATION

I hereby certify the the information contained herein is true and complete to the best of my knowledge and belief.

*Diana J. Briggs*  
Signature

DIANA J. BRIGGS

Printed Name

PRODUCTION ANALYST

Title

APRIL 19, 2006

Date

SURVEYOR CERTIFICATION

I hereby certify that the well location shown on this plat was plotted from field notes of actual surveys made by me or under my supervision, and that the same is true and correct to the best of my belief.

OCTOBER 30, 2002

Date Surveyed A.W.B.

Signature of Professional Surveyor

*Ronald G. Edson*  
Professional Surveyor  
NEW MEXICO  
02110768  
04/31/02

Certification No. RONALD G. EDSON 0239  
GARY EDSON 12641

DISTRICT I  
P.O. Box 1263, Hobbs, NM 88241-1263

DISTRICT II  
P.O. Box 99, Artesia, NM 88211-0099

DISTRICT III  
1000 Rio Grande Rd., Artesia, NM 87410

DISTRICT IV  
P.O. Box 2088, Santa Fe, N.M. 87504-2088

State of New Mexico

Energy, Minerals and Natural Resources Department

OIL CONSERVATION DIVISION

P.O. Box 2088

Santa Fe, New Mexico 87504-2088

Form C-102

Revised February 10, 1994

Submit to Appropriate District Office

State Lease - 4 Copies

Fee Lease - 3 Copies

WELL LOCATION AND ACREAGE DEDICATION PLAT

☐ AMENDED REPORT

API Number <b>30-015-32473</b>	Pool Code <b>81283</b>	Pool Name <b>MCMILLAN; UPPER PENN (GAS)</b>
Property Code <b>33128</b>	Property Name <b>PECOS "32" STATE</b>	Well Number <b>3</b>
GRID No. <b>14049</b>	Operator Name <b>MARBOB ENERGY CORPORATION</b>	Elevation <b>3379'</b>

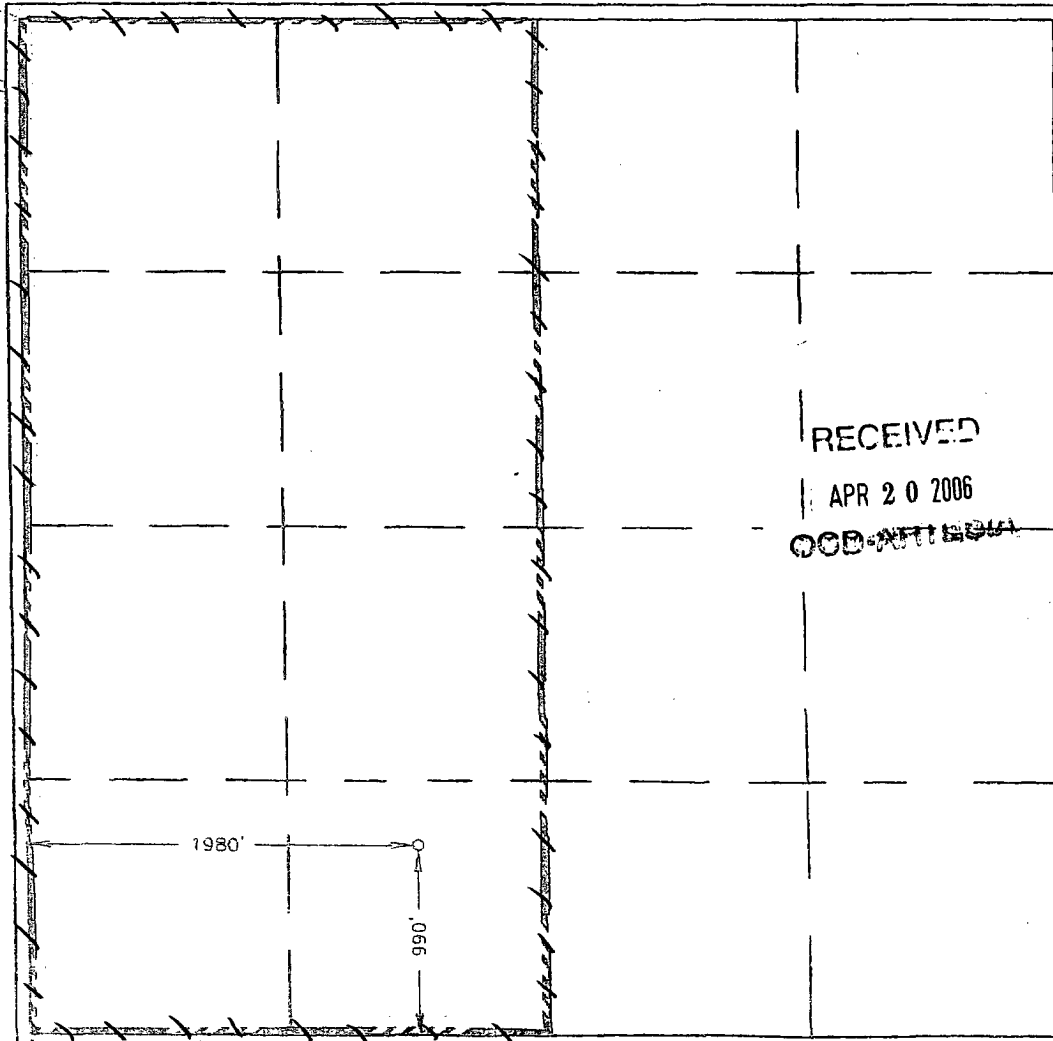
Surface Location

UL or lot No. <b>N</b>	Section <b>32</b>	Township <b>19-S</b>	Range <b>27-E</b>	Lot Idn	Feet from the <b>990</b>	North/South line <b>SOUTH</b>	Feet from the <b>1980</b>	East/West line <b>WEST</b>	County <b>EDDY</b>
---------------------------	----------------------	-------------------------	----------------------	---------	-----------------------------	----------------------------------	------------------------------	-------------------------------	-----------------------

Bottom Hole Location If Different From Surface

UL or lot No.	Section	Township	Range	Lot Idn	Feet from the	North/South line	Feet from the	East/West line	County
Dedicated Acres <b>320</b>	Joint or Infill	Consolidation Code	Order No.						

NO ALLOWABLE WILL BE ASSIGNED TO THIS COMPLETION UNTIL ALL INTERESTS HAVE BEEN CONSOLIDATED  
OR A NON-STANDARD UNIT HAS BEEN APPROVED BY THE DIVISION



OPERATOR CERTIFICATION

I hereby certify that the information contained herein is true and complete to the best of my knowledge and belief.

*Diana J. Briggs*  
Signature  
**DIANA J. BRIGGS**  
Printed Name

**PRODUCTION ANALYST**  
Title

**APRIL 19, 2006**  
Date

SURVEYOR CERTIFICATION

I hereby certify that the well location shown on this plat was plotted from field notes of actual surveys made by me or under my supervision, and that the same is true and correct to the best of my belief.

**OCTOBER 30, 2002**

Date Surveyed **A.W.B**

Signature of **RONALD J. EDSON**  
Professional Surveyor

*Ronald J. Edson*  
Signature  
**02.11.0768**  
Professional Surveyor

Certificate No. **RONALD J. EDSON 3239**  
**CARY EDSON 12641**

DISTRICT I  
P.O. Box 1368, Hobbs, NM 88241-1368

DISTRICT II  
P.O. Drawer 88, Arivaca, NM 88211-0718

DISTRICT III  
1800 Rio Grande Rd., Aztec, NM 87410

DISTRICT IV  
P.O. Box 2088, Santa Fe, N.M. 87504-2088

State of New Mexico  
Energy, Minerals and Natural Resources Department

OIL CONSERVATION DIVISION  
P.O. Box 2088  
Santa Fe, New Mexico 87504-2088

Form C-102  
Revised February 10, 1984  
Submit to Appropriate District Office  
State Lease - 4 Copies  
Fee Lease - 3 Copies

WELL LOCATION AND ACREAGE DEDICATION PLAT

☐ AMENDED REPORT

API Number 30-015-32473	Pool Code 94986	Pool Name WOLFCAMP (GAS)
Property Code 33128	Property Name PECOS "32" STATE	Well Number 3
OGRIID No. 14049	Operator Name MARBOB ENERGY CORPORATION	Elevation 3379'

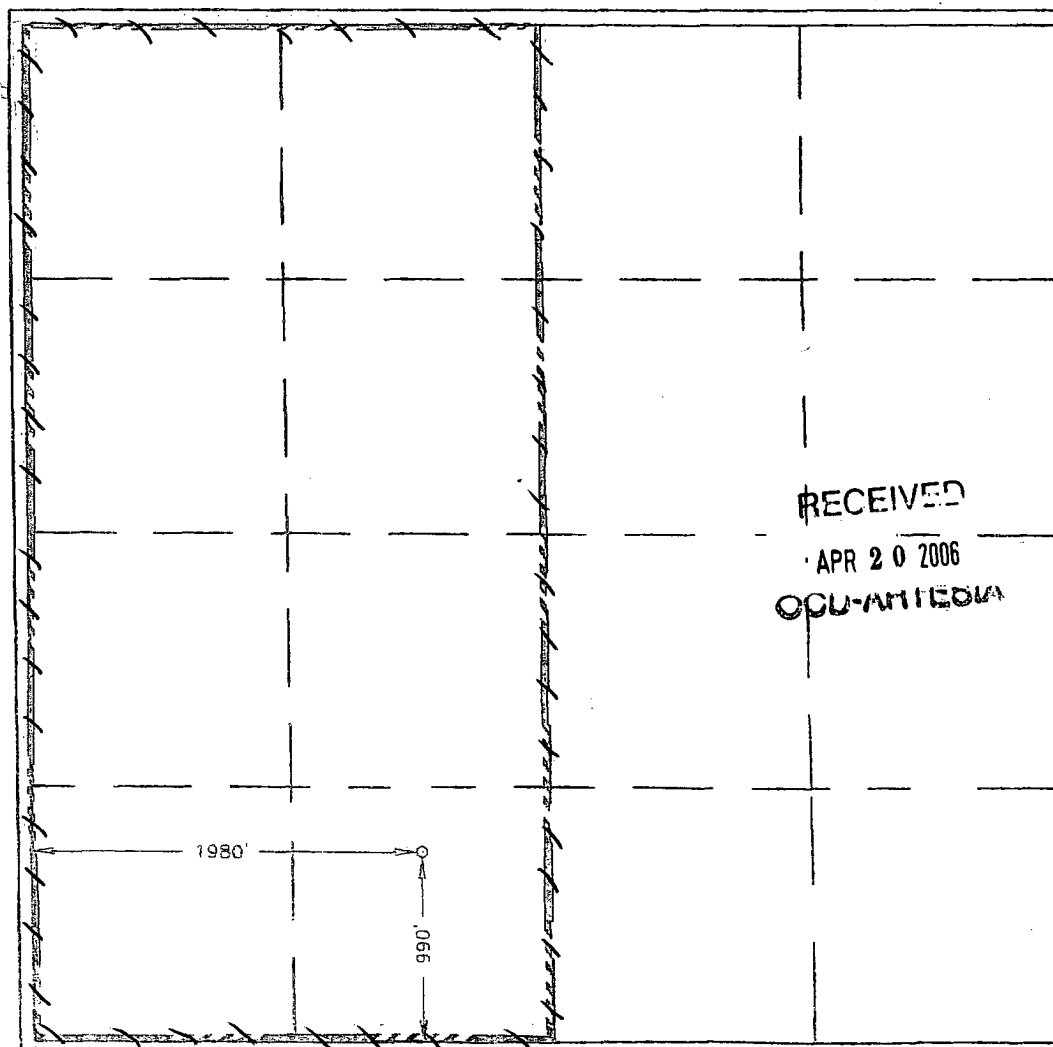
Surface Location

UL or lot No. N	Section 32	Township 19-S	Range 27-E	Lot Idn	Feet from the 990	North/South line SOUTH	Feet from the 1980	East/West line WEST	County EDDY
--------------------	---------------	------------------	---------------	---------	----------------------	---------------------------	-----------------------	------------------------	----------------

Bottom Hole Location If Different From Surface

UL or lot No.	Section	Township	Range	Lot Idn	Feet from the	North/South line	Feet from the	East/West line	County
Dedicated Acres 320	Joint or Infill	Consolidation Code	Order No.						

NO ALLOWABLE WILL BE ASSIGNED TO THIS COMPLETION UNTIL ALL INTERESTS HAVE BEEN CONSOLIDATED  
OR A NON-STANDARD UNIT HAS BEEN APPROVED BY THE DIVISION



OPERATOR CERTIFICATION

I hereby certify the the information  
contained herein is true and complete to the  
best of my knowledge and belief.

*Diana J. Briggs*  
Signature

DIANA J. BRIGGS

Printed Name

PRODUCTION ANALYST

Title

APRIL 19, 2006

Date

SURVEYOR CERTIFICATION

I hereby certify that the well location shown  
on this plat was plotted from field notes of  
actual surveys made by me or under my  
supervision, and that the same is true and  
correct to the best of my belief.

OCTOBER 30, 2002

Date Surveyed A.W.B.

Signature of  
Professional Surveyor

*Ronald G. Edson*  
NEW MEXICO  
02110768

Certification No. RONALD G. EDSON 3239  
12641

DISTRICT I  
P.O. Box 1968, Hobbs, NM 88241-1968

DISTRICT II  
P.O. Boxer RD, Artesia, NM 88211-0710

DISTRICT III  
1000 Rio Grande Rd., Artesia, NM 87410

DISTRICT IV  
P.O. Box 2088, Santa Fe, N.M. 87504-2088

State of New Mexico

Energy, Minerals and Natural Resources Department

OIL CONSERVATION DIVISION

P.O. Box 2088

Santa Fe, New Mexico 87504-2088

Form C-102

Revised February 10, 1994

Submit to Appropriate District Office

State Lease - 4 Copies

Fee Lease - 3 Copies

WELL LOCATION AND ACREAGE DEDICATION PLAT

☐ AMENDED REPORT

API Number 30-015-32473	Pool Code 96403	Pool Name Wildcat BONE SPRING
Property Code 33128	Property Name PECOS "32" STATE	Well Number 3
OGRID No. 14049	Operator Name MARBOB ENERGY CORPORATION	Elevation 3379'

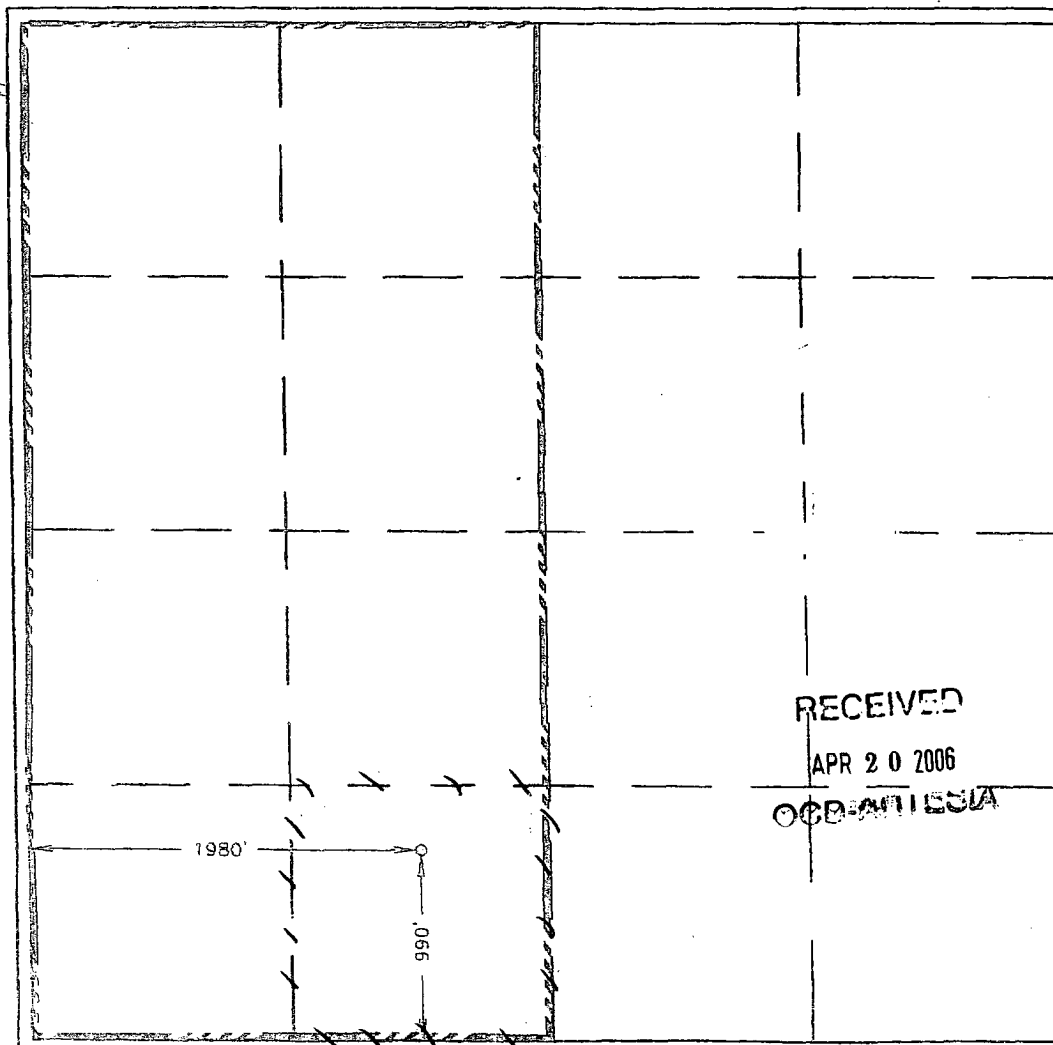
Surface Location

UL or lot No. N	Section 32	Township 19-S	Range 27-E	Lot Idn	Feet from the 990	North/South line SOUTH	Feet from the 1980	East/West line WEST	County EDDY
--------------------	---------------	------------------	---------------	---------	----------------------	---------------------------	-----------------------	------------------------	----------------

Bottom Hole Location If Different From Surface

UL or lot No.	Section	Township	Range	Lot Idn	Feet from the	North/South line	Feet from the	East/West line	County
Dedicated Acres 40	Joint or Infill	Consolidation Code	Order No.						

NO ALLOWABLE WILL BE ASSIGNED TO THIS COMPLETION UNTIL ALL INTERESTS HAVE BEEN CONSOLIDATED  
OR A NON-STANDARD UNIT HAS BEEN APPROVED BY THE DIVISION



RECEIVED  
APR 20 2006  
OCD-ATL-ESJA

OPERATOR CERTIFICATION

I hereby certify that the information contained herein is true and complete to the best of my knowledge and belief.

*Diana J. Briggs*  
Signature  
DIANA J. BRIGGS  
Printed Name

PRODUCTION ANALYST  
Title

APRIL 19, 2006  
Date

SURVEYOR CERTIFICATION

I hereby certify that the well location shown on this plat was plotted from field notes of actual surveys made by me or under my supervision, and that the same is true and correct to the best of my belief.

OCTOBER 30, 2002

Date Surveyed  
Signature & Seal of Professional Surveyor  
A.W.B.

*Ronald G. Edson*  
Professional Surveyor  
NEW MEXICO  
02-11-0768  
Certificate No. RONALD G. EDSON 3239  
GARY EDSON 12641