

UNITED STATES  
DEPARTMENT OF THE INTERIOR  
BUREAU OF LAND MANAGEMENTNM CONSERVATION  
ARTESIA DISTRICT  
MAR 08 2018FORM APPROVED  
OMB No 1004 0137  
Expires July 31 2010

## WELL COMPLETION OR RECOMPLETION REPORT AND LOG

5 Lease Serial No  
NMNM05603531a Type of Well ☐ Oil Well ☐ Gas Well ☐ Dry ☒ Other INJ  
b Type of Completion ☒ New Well ☐ Work Over ☐ Deepen ☐ Plug Back ☐ Diff Resvr  
Other \_\_\_\_\_

6 If Indian, Allottee or Tribe Name

7 Unit or CA Agreement Name and No  
NMNM126412X2 Name of Operator  
CHI OPERATING INCORPORATED E-Mail pamc@chienergyinc.com

Contact PAM CORBETT

8 Lease Name and Well No  
BENSON DELAWARE UNIT 83 Address  
MIDLAND, TX 797023a Phone No (include area code)  
Ph 432-685-50019 API Well No  
30-015-34816-00-S1

4 Location of Well (Report location clearly and in accordance with Federal requirements)\*

At surface SWNW 2500FNL 660FWL

At top prod interval reported below SWNW 1980FNL 660FWL

At total depth SWNW 1980FNL 660FWL

10 Field and Pool, or Exploratory  
BENSON-DELAWARE11 Sec, T, R, M, or Block and Survey  
or Area Sec 12 T19S R30E Mer NMP12 County or Parish  
EDDY13 State  
NM14 Date Spudded  
04/15/200615 Date T D Reached  
04/29/200616 Date Completed  
☐ D & A ☒ Ready to Prod  
07/15/200617 Elevations (DF, KB, RT, GL)\*  
3423 GL18 Total Depth MD  
TVD 5351  
529919 Plug Back T D MD  
TVD 567620 Depth Bridge Plug Set MD  
TVD21 Type Electric & Other Mechanical Logs Run (Submit copy of each)  
GR-CAL-CNL LDT DDL MSFL22 Was well cored? ☒ No ☐ Yes (Submit analysis)  
Was DST run? ☒ No ☐ Yes (Submit analysis)  
Directional Survey? ☐ No ☒ Yes (Submit analysis)

## 23 Casing and Liner Record (Report all strings set in well)

Hole Size	Size/Grade	Wt (#/ft)	Top (MD)	Bottom (MD)	Stage Cementer Depth	No of Sks & Type of Cement	Slurry Vol (BBL)	Cement Top*	Amount Pulled
17 500	13 375 J-55	48 0	0	511		500			
11 000	8 625 J55	24 0	0	1909	0	505	0	0	
7 875	5 500 J55	17 0	0	5282		1675	0	0	

## 24 Tubing Record

Size	Depth Set (MD)	Packer Depth (MD)	Size	Depth Set (MD)	Packer Depth (MD)	Size	Depth Set (MD)	Packer Depth (MD)
2 875		4750						

## 25 Producing Intervals

Formation	Top	Bottom	Perforated Interval	Size	No Holes	Perf Status
A) BONE SPRINGS	4830	4872	4830 TO 4872			INJ - Bensen Delaware
B) DELAWARE	4830	4872	5066 TO 5081			INJ - Bensen Delaware
C)						
D)						

## 26 Perforation Record

## 27 Acid, Fracture, Treatment, Cement Squeeze, Etc

Depth Interval	Amount and Type of Material
4830 TO 4872	46 000# white 16/30 sand 14 000# resin sand
4830 TO 4872	P/1500 GAL 7 1/2% NEFE ACID
5066 TO 5081	P/500 GAL 7 1/2% NEFE ACID

## 28 Production - Interval A

Date First Produced	Test Date	Hours Tested	Test Production	Oil BBL	Gas MCF	Water BBL	Oil Gravity Corr API	Gas Gravity	Production Method
07/15/2006	07/29/2006	24	→	21 0	0 0	99 0			OTHER
Choke Size	Tbg Press Flwg SI	Csg Press	24 Hr Rate	Oil BBL	Gas MCF	Water BBL	Gas Oil Ratio	Well Status	
	0		→	21	0	99		WIW	

## 28a Production - Interval B

Date First Produced	Test Date	Hours Tested	Test Production	Oil BBL	Gas MCF	Water BBL	Oil Gravity Corr API	Gas Gravity	Production Method
07/15/2006	07/29/2006	24	→	21 0	0 0	99 0			OTHER
Choke Size	Tbg Press Flwg SI	Csg Press	24 Hr Rate	Oil BBL	Gas MCF	Water BBL	Gas Oil Ratio	Well Status	
	0		→	21	0	99		WIW	

(See Instructions and spaces for additional data on reverse side)

ELECTRONIC SUBMISSION #397379 VERIFIED BY THE BLM WELL INFORMATION SYSTEM

\*\* BLM REVISED \*\* BLM REVISED \*\* BLM REVISED \*\* BLM REVISED \*\* BLM REVISED \*\*

Reclamation Due: 1/15/2007

## 28b Production Interval C

Date First Produced	Test Date	Hours Tested	Test Production	Oil BBL	Gas MCF	Water BBL	Oil Gravity Corr API	Gas Gravity	Production Method
			→						
Choke Size	Tbg Press Flwg SI	Csg Press	24 Hr Rate	Oil BBL	Gas MCF	Water BBL	Gas Oil Ratio	Well Status	
			→						

## 28c Production - Interval D

Date First Produced	Test Date	Hours Tested	Test Production	Oil BBL	Gas MCF	Water BBL	Oil Gravity Corr API	Gas Gravity	Production Method
			→						
Choke Size	Tbg Press Flwg SI	Csg Press	24 Hr Rate	Oil BBL	Gas MCF	Water BBL	Gas Oil Ratio	Well Status	
			→						

29 Disposition of Gas(Sold used for fuel vented etc )  
NO MEASURABLE GAS

## 30 Summary of Porous Zones (Include Aquifers)

Show all important zones of porosity and contents thereof Cored intervals and all drill-stem tests, including depth interval tested, cushion used, time tool open, flowing and shut-in pressures and recoveries

## 31 Formation (Log) Markers

Formation	Top	Bottom	Descriptions, Contents, etc	Name	Top Meas Depth
YATES SEVEN RIVERS QUEEN DELAWARE	2150 2346 2988 4529			YATES SEVEN RIVERS QUEEN DELAWARE	2150 2346 2988 4529

## 32 Additional remarks (include plugging procedure)

5 1/2 x 2 7/8" Arrowset 1X Big Bore packer  
Packer set @ 4750

11/11/2015 Ran MIT test delivered chart to Randy Dade and gave permission to inject

## 33 Circle enclosed attachments

- |  |                   |              |                      |
|--|-------------------|--------------|----------------------|
| 1 Electrical/Mechanical Logs (1 full set req'd )     | 2 Geologic Report | 3 DST Report | 4 Directional Survey |
| 5 Sundry Notice for plugging and cement verification | 6 Core Analysis   | 7 Other      |                      |

## 34 I hereby certify that the foregoing and attached information is complete and correct as determined from all available records (see attached instructions)

Electronic Submission #397379 Verified by the BLM Well Information System  
For CHI OPERATING INCORPORATED, sent to the Carlsbad  
Committed to AFMSS for processing by DUNCAN WHITLOCK on 03/01/2018 (18DW0084SE)

Name (please print) SONNY MANN

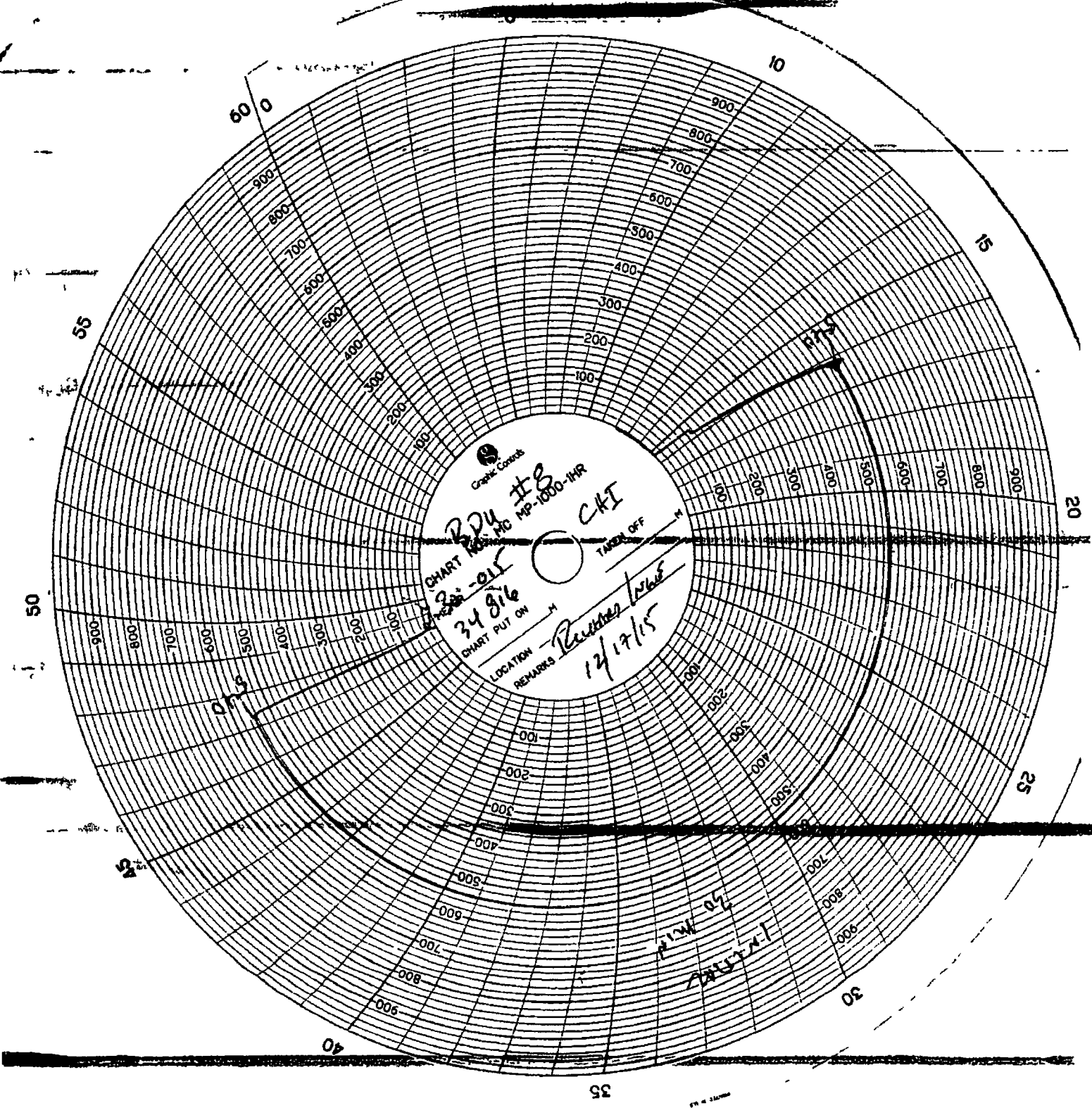
Title FIELD SUPERVISOR

Signature \_\_\_\_\_ (Electronic Submission)

Date 12/07/2017

Title 18 U S C Section 1001 and Title 43 U S C Section 1212, make it a crime for any person knowingly and willfully to make to any department or agency of the United States any false, fictitious or fraudulent statements or representations as to any matter within its jurisdiction

**\*\* REVISED \*\* REVISED \*\* REVISED \*\* REVISED \*\* REVISED \*\* REVISED \*\* REVISED \*\* REVISED \*\***



Graphic Controls

CHART NO. MC MP-1000-1HR

CHART PUT ON

LOCATION

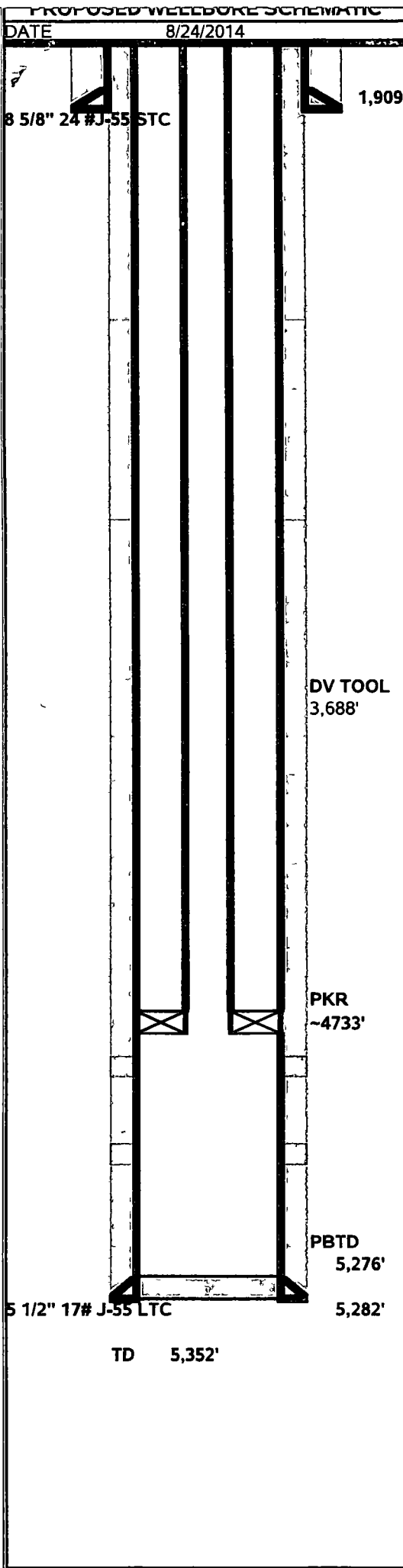
REMARKS

TAPER OFF

B24 #8  
34 816

REMARKS  
12/17/15

50 Mils



PROPOSED WELLBORE SCHEMATIC		DATE 8/24/2014	
OPER Chi Energy		API 30-015-34816	
LOCATION 2500 FNL 660 FWL SEC 12 19S 30E EDDY CO NM			
TD 5 352'	PBD 5 276'	KB 3 437'	DF 3 436'
COD	DOD	GL 3,423'	
CASING/TBG DEPTH GMT ID DRIFT BURST TENS			
SURF 13 3/8 48# J-55	511'	CIRC	
INTER 8 5/8" 24 #J-55 STC	1,909'	CIRC	8 097 7 972 2,950 244 0
PROD 5 1/2" 17# J-55 LTC	5,282'	CIRC	4 892 4 767 5 320 247 0
LINER			
TBG 2 7/8" J-55 IPC			2 441 2 347 7,260 99 66
PERFS			
4830, 4832, 4840, 4841, 4853, 4854, 4855 4870 4871, 4872 1 SPF 6/22/06			
5066-5081 2SPF 6/14/06			
TUBING BREAKDOWN		ROD BREAKDOWN	
Tbg Hd 7 1/16" 5k Slip-Type			
~150 jts 2 7/8" J-55 IPC			
5 1/2" x 2 7/8" Arrowset 1X Big Bore packer			
PKR SET @ ~4,733'			
ART LIFT			
UNIT		SPM	RT
MOTOR		SL	Cond
NOTES			
HAS CORES			
MIKE & NOVEMBER			
4830 4832 4840 4841 4853 4854 4855 4870 4871 4872 1 SPF 6/22/06			
PAPA			
5066-5081 2SPF 6/14/06			
BY LC PAINTER			