

District I  
1625 N French Dr Hobbs, NM 88240  
Phone (575) 393-6161 Fax (575) 393-0720

District II  
811 S First St Artesia NM 88210  
Phone (505) 748 1283 Fax (505) 748-9720

District III  
1000 Rio Brazos Road Aztec NM 87410  
Phone (505) 334-6178 Fax (505) 334-6170

District IV  
1220 S St. Francis Dr Santa Fe NM 87505  
Phone (505) 476 3460 Fax (505) 476-3462

State of New Mexico  
Energy, Minerals & Natural Resources Department  
**OIL CONSERVATION DIVISION**  
1220 South St Francis Dr  
Santa Fe, NM 87505

Form C-102  
Revised August 1, 2011  
Submit one copy to appropriate  
District Office  
☐ AMENDED REPORT

APR 23 2018

**WELL LOCATION AND ACREAGE DEDICATION PLAT**

<sup>1</sup> API Number 30-015-44891	<sup>2</sup> Pool Code 98220	<sup>3</sup> Well Name Purple Sages Wellcamp
<sup>4</sup> Property Code 321273	<sup>5</sup> Property Name POKER LAKE UNIT 18 BRUSHY DRAW	
<sup>7</sup> OGRID No 2100737	<sup>8</sup> Operator Name BOPCO, L P	<sup>6</sup> Well Number 102H
		<sup>9</sup> Elevation 3168

**10 Surface Location**

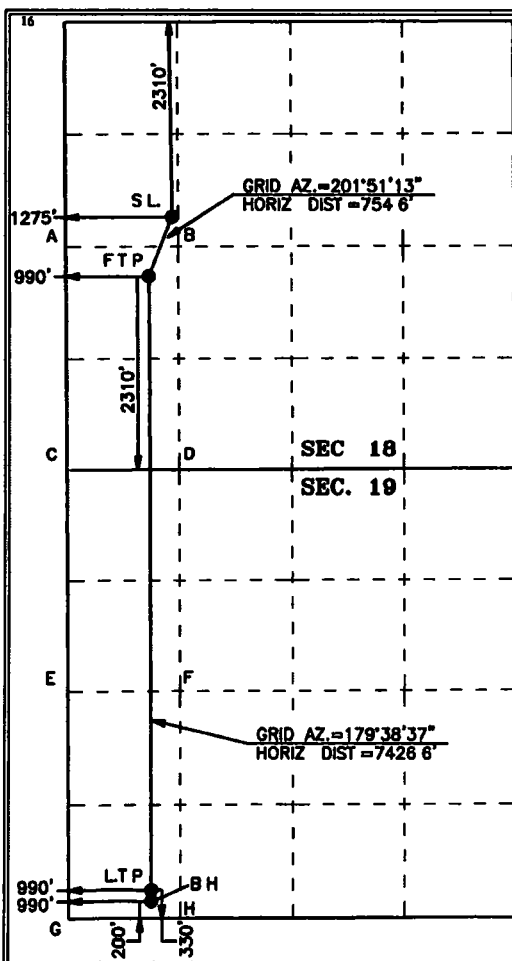
UL or lot no	Section	Township	Range	Lot Idn	Feet from the	North/South line	Feet from the	East/West line	County
2	18	25 S	30 E		2,310	NORTH	1,275	WEST	EDDY

**11 Bottom Hole Location If Different From Surface**

UI or lot no.	Section	Township	Range	Lot Idn	Feet from the	North/South line	Feet from the	East/West line	County
4	19	25 S	30 E		200	SOUTH	990	WEST	EDDY

<sup>12</sup> Dedicated Acres 4.86	<sup>13</sup> Joint or Infill H8262	<sup>14</sup> Consolidation Code	<sup>15</sup> Order No. NSP Pending
---------------------------------------	--	----------------------------------	--

No allowable will be assigned to this completion until all interests have been consolidated or a non-standard unit has been approved by the division



**GEODETIC COORDINATES**  
NAD 27 NME  
SURFACE LOCATION  
Y = 411,609.6  
X = 626,481.9  
LAT = 32 130972\"N  
LONG = 103 924805\"W

NAD 83 NME  
SURFACE LOCATION  
Y = 411,667.9  
X = 667,846.5  
LAT = 32 131096\"N  
LONG = 103 925289\"W

**FIRST TAKE POINT**  
NAD 27 NME  
Y = 410,909.2  
X = 626,181.0  
LAT = 32 129050\"N  
LONG = 103 925721\"W

NAD 83 NME  
Y = 410,967.5  
X = 667,365.6  
LAT = 32 129174\"N  
LONG = 103 926205\"W

**CORNER COORDINATES TABLE**  
NAD 27 NME

A - Y = 411,254.3 N, X = 625,189.0 E
B - Y = 411,260.5 N, X = 626,533.3 E
C - Y = 408,594.2 N, X = 625,204.2 E
D - Y = 408,601.2 N, X = 626,548.3 E
E - Y = 405,935.1 N, X = 625,221.5 E
F - Y = 405,943.0 N, X = 626,563.0 E
G - Y = 403,277.4 N, X = 625,238.2 E
H - Y = 403,285.0 N, X = 626,577.4 E

**CORNER COORDINATES TABLE**  
NAD 83 NME

A - Y = 411,312.6 N, X = 666,373.6 E
B - Y = 411,318.8 N, X = 667,717.9 E
C - Y = 408,652.4 N, X = 666,388.9 E
D - Y = 408,659.4 N, X = 667,733.0 E
E - Y = 405,993.3 N, X = 666,408.3 E
F - Y = 406,001.2 N, X = 667,747.8 E
G - Y = 403,335.5 N, X = 666,423.1 E
H - Y = 403,343.1 N, X = 667,762.3 E

**LAST TAKE POINT**  
NAD 27 NME  
Y = 403,613.0  
X = 626,226.1  
LAT = 32 108992\"N  
LONG = 103 925864\"W

NAD 83 NME  
Y = 403,671.1  
X = 667,411.0  
LAT = 32 109117\"N  
LONG = 103 926148\"W

**BOTTOM HOLE LOCATION**  
NAD 27 NME  
Y = 403,483.0  
X = 626,227.0  
LAT = 32 108635\"N  
LONG = 103 925863\"W

NAD 83 NME  
Y = 403,541.1  
X = 667,411.8  
LAT = 32 108759\"N  
LONG = 103 926147\"W

**17 OPERATOR CERTIFICATION**

I hereby certify that the information contained herein is true and complete to the best of my knowledge and belief and that this organization either owns a working interest or unleased mineral interest in the land including the proposed bottom hole location or has a right to drill this well at this location pursuant to a contract with an owner of such a mineral or working interest or to a voluntary pooling agreement or a compulsory pooling order heretofore entered by the division

Signature: Stephanie Rabadue  
Date: 1-3-17  
Printed Name: Stephanie Rabadue  
E-mail Address: stephanie-rabadue@xenergy.com

**18 SURVEYOR CERTIFICATION**

I hereby certify that the well location shown on this plat was plotted from field notes of actual surveys made by me or under my supervision and that the same is true and correct to the best of my belief

1-3-2018

Date of Survey

Signature and Seal of Professional Surveyor

MARK DILLON HARP 23786

Certificate Number



AI

2017050633

NSP  
Ref 4-24-18