

District I
1625 N. French Dr., Hobbs, NM 88240
Phone: (575) 393-6161 Fax: (575) 393-0720
District II
811 S. First St., Artesia, NM 88210
Phone: (575) 748-1283 Fax: (575) 748-9720
District III
1000 Rio Brazos Road, Aztec, NM 87410
Phone: (505) 334-6178 Fax: (505) 334-6170
District IV
1220 S. St. Francis Dr., Santa Fe, NM 87505
Phone: (505) 476-3460 Fax: (505) 476-3462

State of New Mexico
Energy, Minerals & Natural Resources Department

OIL CONSERVATION DIVISION

1220 South St. Francis Dr.

Santa Fe, NM 87505

ARTESIA DISTRICT

MAY 07 2018

Form C-102

Revised August 1, 2011

Submit one copy to appropriate

District Office

☐ AMENDED REPORT

WELL LOCATION AND ACREAGE DEDICATION PLAT

¹ API Number 30-015-44940	² Pool Code 39350	³ Pool Name Livingston Ridge; Bone Spring
⁴ Property Code 316874	⁵ Property Name TOMB RAIDER 1-12 FED	⁶ Well Number 334H
⁷ OGRID No. 6137	⁸ Operator Name DEVON ENERGY PRODUCTION COMPANY, L.P.	⁹ Elevation 3480.6

¹⁰ Surface Location

UL or lot no.	Section	Township	Range	Lot Idn	Feet from the	North/South line	Feet from the	East/West line	County
1	1	23 S	31 E		360	NORTH	1070	EAST	EDDY

¹¹ Bottom Hole Location If Different From Surface

UL or lot no.	Section	Township	Range	Lot Idn	Feet from the	North/South line	Feet from the	East/West line	County
P	12	23 S	31 E		330	SOUTH	950	EAST	EDDY

¹² Dedicated Acres 320	¹³ Joint or Infill	¹⁴ Consolidation Code	¹⁵ Order No.
---	-------------------------------	----------------------------------	-------------------------

No allowable will be assigned to this completion until all interests have been consolidated or a non-standard unit has been approved by the division.

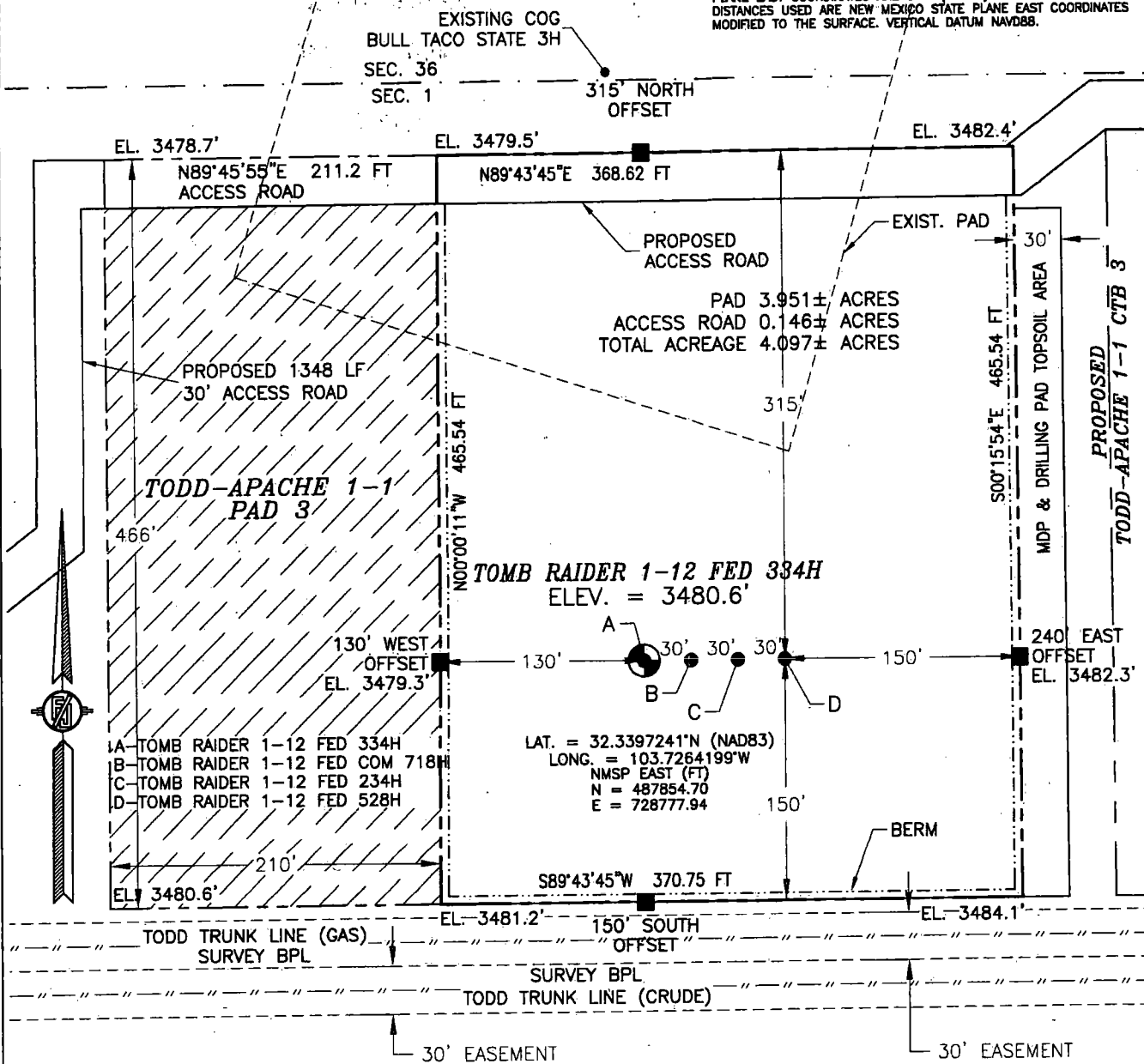
<p>17 OPERATOR CERTIFICATION</p> <p>I hereby certify that the information contained herein is true and complete to the best of my knowledge and belief, and that this organization either owns a working interest or unleased mineral interest in the land including the proposed bottom hole location or has a right to drill this well at this location pursuant to a contract with an owner of such a mineral or working interest, or to a voluntary pooling agreement or a compulsory pooling order heretofore entered by the division.</p> <p>Signature: <i>[Signature]</i> Date: 2/2/2018</p> <p>Printed Name: Chance Bland</p> <p>E-mail Address: chance.bland@dmv.com</p>		<p>18 SURVEYOR CERTIFICATION</p> <p>I hereby certify that the well location shown on this plat was plotted from field notes of actual surveys made by me or under my supervision, and that the same is true and correct to the best of my belief.</p> <p>JANUARY 23, 2018</p> <p>Date of Survey: JANUARY 23, 2018</p> <p>Signature and Seal of Professional Surveyor: <i>[Signature]</i></p> <p>Certificate Number: 12797</p> <p>SURVEY NO. 5980</p>	
---	--	--	--

KWP. 5-7-18

SECTION 1, TOWNSHIP 23 SOUTH, RANGE 31 EAST, N.M.P.M.
EDDY COUNTY, STATE OF NEW MEXICO

SITE MAP

NOTE: LATITUDE AND LONGITUDE COORDINATES ARE SHOWN USING THE NORTH AMERICAN DATUM OF 1983 (NAD83) LISTED NEW MEXICO STATE PLANE EAST COORDINATES ARE GRID (NAD83). BASIS OF BEARING AND DISTANCES USED ARE NEW MEXICO STATE PLANE EAST COORDINATES MODIFIED TO THE SURFACE. VERTICAL DATUM NAVD88.



010 50 100 200

SCALE 1" = 100'

DIRECTIONS TO LOCATION

FROM STATE HIGHWAY 128 AND CR 798 (RED ROAD) GO NORTH ON CR 798 6.4 MILES TO CALICHE LEASE ROAD ON RIGHT, GO EAST ON CALICHE ROAD 0.3 OF A MILE, TURN RIGHT GO SOUTH 0.1 OF A MILE, TURN LEFT GO EAST 0.15 OF A MILE, GO SOUTH 602', THEN SOUTHWEST 311', TURN RIGHT GO SOUTH 355', TURN LEFT GO EAST 528', GO NORTHEAST 215', THEN NORTH 220', TURN RIGHT GO EAST 30' TO THE NORTHWEST PAD CORNER FOR TODD-APACHE 1-1 PAD 3.

DEVON ENERGY PRODUCTION COMPANY, L.P.

TOMB RAIDER 1-12 FED 334H

LOCATED 360 FT. FROM THE NORTH LINE
AND 1070 FT. FROM THE EAST LINE OF
SECTION 1, TOWNSHIP 23 SOUTH,
RANGE 31 EAST, N.M.P.M.

EDDY COUNTY, STATE OF NEW MEXICO

JANUARY 23, 2018

SURVEY NO. 5980

MADRON SURVEYING, INC.

301 SOUTH CANAL
(575) 234-3341

CARLSBAD, NEW MEXICO