

DISTRICT I

1220 N. FRANKLIN DR., BOSS, NM 88240

DISTRICT II

1301 W. GRAND AVENUE, ARTERIA, NM 88210

DISTRICT III

1000 Rio Brazos Rd., Aztec, NM 87410

DISTRICT IV

1220 S. ST. FRANCIS DR., SANTA FE, NM 87505

State of New Mexico

Energy, Minerals and Natural Resources Department

OIL CONSERVATION DIVISION

1220 SOUTH ST. FRANCIS DR.
Santa Fe, New Mexico 87505

Form C-102

Revised JUNE 10, 2003

Submit to Appropriate District Office

State Lease - 4 Copies

Fee Lease - 3 Copies

RECEIVED

APR 11 2006

WELL LOCATION AND ACREAGE DEDICATION ~~STATE~~ AMENDED REPORT

API Number 30-015-34151	Pool Code 81160	Pool Name McKitttrick Hills, W. Penn.
Property Code 34923	Property Name McKITTRICK 18 FEDERAL	Well Number 1
GRID No. 192463	Operator Name OKY USA WTP LP	Elevation 3960'

Surface Location

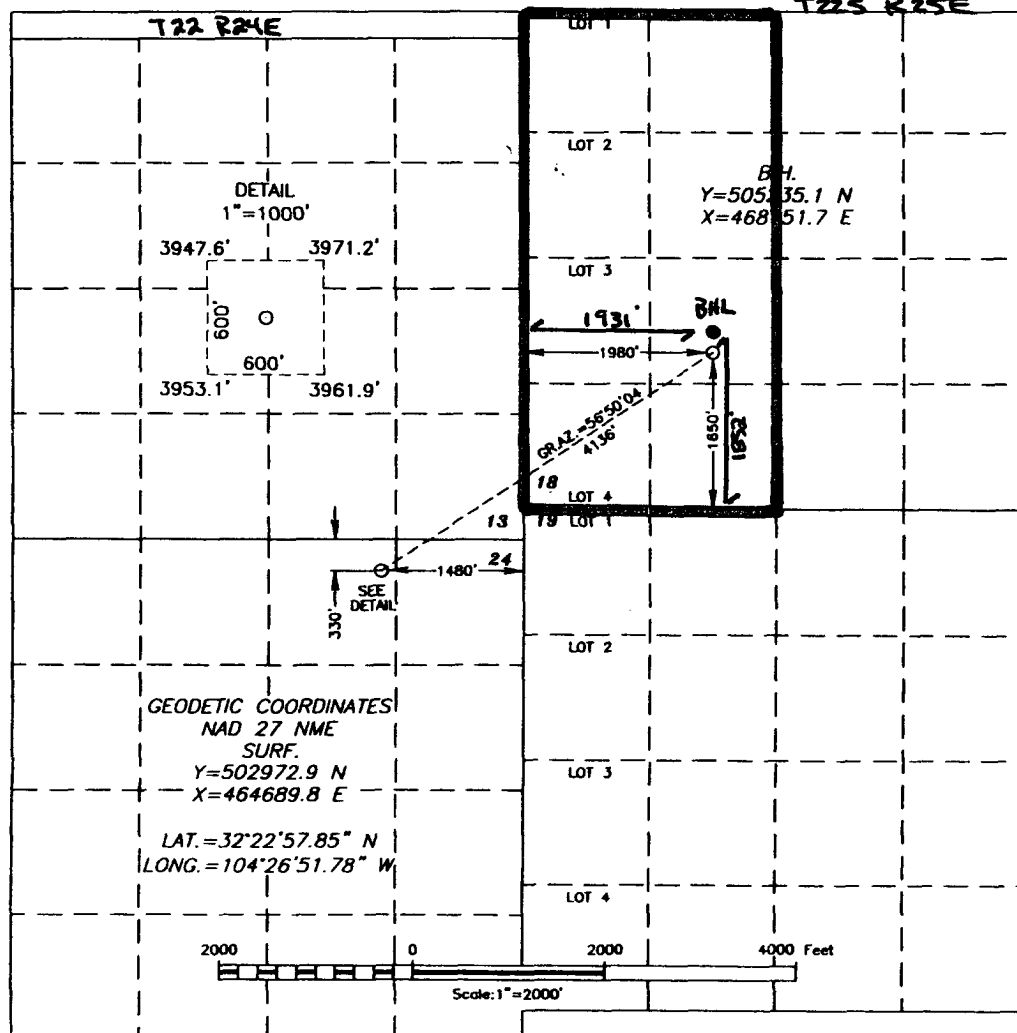
UL or lot No.	Section	Township	Range	Lot Idn	Feet from the	North/South line	Feet from the	East/West line	County
B	24	22-S	24-E		330	NORTH	1480	EAST	EDDY

Bottom Hole Location If Different From Surface

UL or lot No.	Section	Township	Range	Lot Idn	Feet from the	North/South line	Feet from the	East/West line	County
K	18	22-S	25-E		1852	SOUTH	1931	WEST	EDDY

Dedicated Acres 320	Joint or Infill	Consolidation Code	Order No.
------------------------	-----------------	--------------------	-----------

NO ALLOWABLE WILL BE ASSIGNED TO THIS COMPLETION UNTIL ALL INTERESTS HAVE BEEN CONSOLIDATED
OR A NON-STANDARD UNIT HAS BEEN APPROVED BY THE DIVISION



OPERATOR CERTIFICATION

I hereby certify the the information
contained herein is true and complete to the
best of my knowledge and belief.

Signature

David Stewart

Printed Name

Sr. Reg. Analyst

Title

4/10/06

Date

SURVEYOR CERTIFICATION

I hereby certify that the well location shown
on this plat was plotted from field notes of
actual surveys made by me or under my
supervision, and that the same is true and
correct to the best of my belief.

MARCH 9, 2005

Date Surveyed REV 06/16/05 JR

Signature & Seal of
Professional Surveyor

GARY EIDSON
NEW MEXICO
05.13.0944

Certificate No. GARY EIDSON

12641