

Submit 1 Copy To Appropriate District Office
 District I - (575) 393-6161
 1625 N. French Dr., Hobbs, NM 88240
 District II - (575) 748-1283
 811 S. First St., Artesia, NM 88210
 District III - (505) 334-6178
 1000 Rio Brazos Rd., Aztec, NM 87410
 District IV - (505) 476-3460
 1220 S. St. Francis Dr., Santa Fe, NM 87505

State of New Mexico
 Energy, Minerals and Natural Resources

Form C-103
 Revised July 18, 2013

OIL CONSERVATION DIVISION
 1220 South St. Francis Dr.
 Santa Fe, NM 87505

| |
|---|
| WELL API NO. 30-015-44259 |
| 5. Indicate Type of Lease STATE <input type="checkbox"/> FEE <input checked="" type="checkbox"/> |
| 6. State Oil & Gas Lease No. |
| 7. Lease Name or Unit Agreement Name Chicago 9/8 W0IL Fee Com 317855 |
| 8. Well Number 1H |
| 9. OGRID Number 14744 |
| 10. Pool name or Wildcat Purple Sage; Wolfcamp (Gas) 98220 |
| 11. Elevation (Show whether DR, RKB, RT, GR, etc.) 3017 GL |

SUNDRY NOTICES AND REPORTS ON WELLS
 (DO NOT USE THIS FORM FOR PROPOSALS TO DRILL OR TO DEEPEN OR PLUG BACK TO A DIFFERENT RESERVOIR. USE "APPLICATION FOR PERMIT" (FORM C-101) FOR SUCH PROPOSALS.)

1. Type of Well: Oil Well Gas Well Other

2. Name of Operator
Mewbourne Oil Company

3. Address of Operator
PO Box 5270, Hobbs NM 88240

4. Well Location
 Unit Letter I : 2585 feet from the South line and 330 feet from the East line
 Section 9 Township 24S Range 28E NMPM Eddy County

12. Check Appropriate Box to Indicate Nature of Notice, Report or Other Data

NOTICE OF INTENTION TO:

PERFORM REMEDIAL WORK PLUG AND ABANDON
 TEMPORARILY ABANDON CHANGE PLANS
 PULL OR ALTER CASING MULTIPLE COMPL
 DOWNHOLE COMMINGLE
 CLOSED-LOOP SYSTEM
 OTHER:

SUBSEQUENT REPORT OF:

REMEDIAL WORK ALTERING CASING
 COMMENCE DRILLING OPNS. P AND A
 CASING/CEMENT JOB

OTHER:

13. Describe proposed or completed operations. (Clearly state all pertinent details, and give pertinent dates, including estimated date of starting any proposed work). SEE RULE 19.15.7.14 NMAC. For Multiple Completions: Attach wellbore diagram of proposed completion or recompletion.

Mewbourne Oil Company has an approved APD for the above captioned well. Mewbourne requests to change the name from Chicago 9/8 W0IL Fee Com #1H to Chicago 9/8 W2HE Fee Com #2H - 317857

Corrected C-102 attached

RECEIVED

Please call Bradley Bishop with any questions.

MAY 07 2018

DISTRICT II-ARTESIA O.C.D.

Spud Date:

Rig Release Date:

I hereby certify that the information above is true and complete to the best of my knowledge and belief.

SIGNATURE Jackie Lathan TITLE Regulatory DATE 05/02/18

Type or print name Jackie Lathan E-mail address: jlathan@mewbourne.com PHONE: 575-393-5905

For State Use Only

APPROVED BY: Bradley Bishop TITLE Business Ops Spec A DATE 5-8 2018

Conditions of Approval (if any):

District I
1625 N. French Dr., Hobbs, NM 88240
Phone: (575) 393-6161 Fax: (575) 393-0720
District II
811 S. First St., Artesia, NM 88210
Phone: (575) 748-1283 Fax: (575) 748-9720
District III
1000 Rio Brazos Road, Aztec, NM 87410
Phone: (505) 334-6178 Fax: (505) 334-6170
District IV
1220 S. St. Francis Dr., Santa Fe, NM 87505
Phone: (505) 476-3460 Fax: (505) 476-3462

State of New Mexico
Energy, Minerals & Natural Resources Department
OIL CONSERVATION DIVISION
1220 South St. Santa Fe, NM 87505

Form C-102
Revised August 1, 2011
Submit one copy to appropriate
District Office

RECEIVED
MAY 07 2018
DISTRICT II-ARTESIA O.G.D.

AMENDED REPORT

WELL LOCATION AND ACREAGE DEDICATION PLAT

| | | | | | |
|-------------------------------------|--|--|--|---|-----------------------------|
| 1 API Number 30-015-44259 | | 2 Pool Code 98220 | | 3 Pool Name Purple Sage; Wolfcamp (Bas) | |
| 4 Property Code 317855 | | 5 Property Name CHICAGO 9/8 W2HE FEE COM | | | 6 Well Number 2H |
| 7 OGRID NO. 14744 | | 8 Operator Name MEWBOURNE OIL COMPANY | | | 9 Elevation 3017' |

10 Surface Location

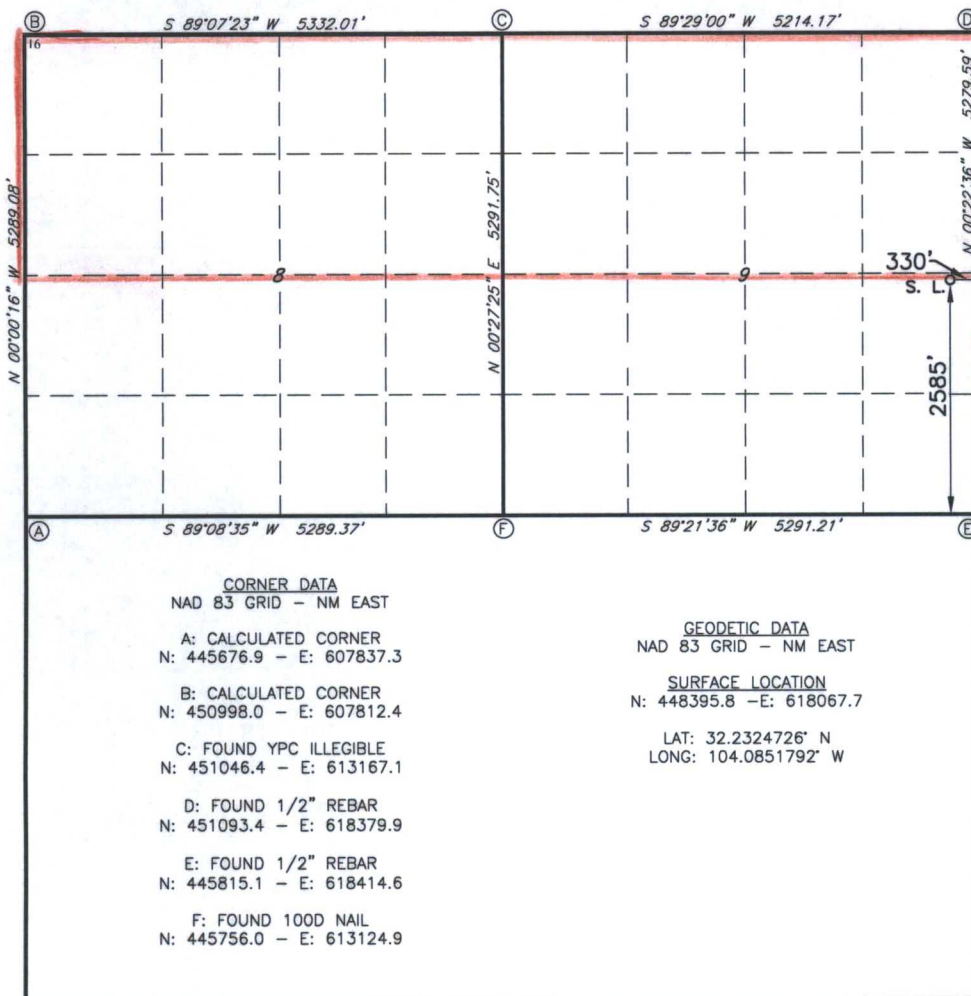
| UL or lot no. | Section | Township | Range | Lot Idn | Feet from the | North/South line | Feet From the | East/West line | County |
|---------------|----------|------------|------------|---------|---------------|------------------|---------------|----------------|-------------|
| I | 9 | 24S | 28E | | 2585 | SOUTH | 330 | EAST | EDDY |

11 Bottom Hole Location If Different From Surface

| UL or lot no. | Section | Township | Range | Lot Idn | Feet from the | North/South line | Feet from the | East/West line | County |
|---------------|----------|------------|------------|---------|---------------|------------------|---------------|----------------|-------------|
| E | 8 | 24S | 28E | | 2200 | North | 330 | West | Eddy |

| | | | |
|----------------------------------|--------------------|-----------------------|--------------|
| 12 Dedicated Acres 640 | 13 Joint or Infill | 14 Consolidation Code | 15 Order No. |
|----------------------------------|--------------------|-----------------------|--------------|

No allowable will be assigned to this completion until all interest have been consolidated or a non-standard unit has been approved by the division.



17 OPERATOR CERTIFICATION
I hereby certify that the information contained herein is true and complete to the best of my knowledge and belief, and that this organization either owns a working interest or unreleased mineral interest in the land including the proposed bottom hole location or has a right to drill this well at this location pursuant to a contract with an owner of such a mineral or working interest, or to a voluntary pooling agreement or a compulsory pooling order heretofore entered by the division.

Signature: *Jackie Lathan* Date: **5/2/18**
Printed Name: **Jackie Lathan**
E-mail Address:

18 SURVEYOR CERTIFICATION
I hereby certify that the well location shown on this plat was plotted from field notes of actual surveys made by me or under my supervision, and that the same is true and correct to the best of my belief.

Date of Survey: **5-26-2017**
Signature and Seal of Professional Surveyor: *Robert M. Howett*
Certificate Number: **19680**