

UNITED STATES
DEPARTMENT OF THE INTERIOR
BUREAU OF LAND MANAGEMENT

NM OIL CONSERVATION

ARTESIA DISTRICT

FORM APPROVED
OMB NO. 1004-0137
Expires: January 31, 2018

APR 18 2018

SUNDRY NOTICES AND REPORTS ON WELLS
Do not use this form for proposals to drill or to re-enter an abandoned well. Use form 3160-3 (APD) for such proposals.

RECEIVED

SUBMIT IN TRIPLICATE - Other instructions on page 2

1. Type of Well <input type="checkbox"/> Oil Well <input checked="" type="checkbox"/> Gas Well <input type="checkbox"/> Other		8. Well Name and No. ROADHOUSE FEDERAL 2H
2. Name of Operator XTO ENERGY INCORPORATED		9. API Well No. 30-015-44279-00-S1
3a. Address 6401 HOLIDAY HILL ROAD BLDG 5 MIDLAND, TX 79707		10. Field and Pool or Exploratory Area PURPLE SAGE-WOLFCAMP (GAS)
3b. Phone No. (include area code) Ph: 432-620-4374		
4. Location of Well (Footage, Sec., T., R., M., or Survey Description) Sec 6 T25S R29E SWSE 180FSL 2040FEL 32.152462 N Lat, 104.021797 W Lon		11. County or Parish, State EDDY COUNTY, NM

12. CHECK THE APPROPRIATE BOX(ES) TO INDICATE NATURE OF NOTICE, REPORT, OR OTHER DATA

TYPE OF SUBMISSION	TYPE OF ACTION			
<input checked="" type="checkbox"/> Notice of Intent	<input type="checkbox"/> Acidize	<input type="checkbox"/> Deepen	<input type="checkbox"/> Production (Start/Resume)	<input type="checkbox"/> Water Shut-Off
<input type="checkbox"/> Subsequent Report	<input type="checkbox"/> Alter Casing	<input type="checkbox"/> Hydraulic Fracturing	<input type="checkbox"/> Reclamation	<input type="checkbox"/> Well Integrity
<input type="checkbox"/> Final Abandonment Notice	<input type="checkbox"/> Casing Repair	<input type="checkbox"/> New Construction	<input type="checkbox"/> Recomplete	<input checked="" type="checkbox"/> Other
	<input type="checkbox"/> Change Plans	<input type="checkbox"/> Plug and Abandon	<input type="checkbox"/> Temporarily Abandon	Change to Original A
	<input type="checkbox"/> Convert to Injection	<input type="checkbox"/> Plug Back	<input type="checkbox"/> Water Disposal	PD

13. Describe Proposed or Completed Operation: Clearly state all pertinent details, including estimated starting date of any proposed work and approximate duration thereof. If the proposal is to deepen directionally or recompleat horizontally, give subsurface locations and measured and true vertical depths of all pertinent markers and zones. Attach the Bond under which the work will be performed or provide the Bond No. on file with BLM/BIA. Required subsequent reports must be filed within 30 days following completion of the involved operations. If the operation results in a multiple completion or recompleat in a new interval, a Form 3160-4 must be filed once testing has been completed. Final Abandonment Notices must be filed only after all requirements, including reclamation, have been completed and the operator has determined that the site is ready for final inspection.

XTO Energy, Inc requests permission to revise casing/cement design per the attached drilling program.....

Carlsbad Field Office
OCD Artesia**SEE ATTACHED FOR**
CONDITIONS OF APPROVAL

14. I hereby certify that the foregoing is true and correct.	
Electronic Submission #410605 verified by the BLM Well Information System For XTO ENERGY INCORPORATED, sent to the Carlsbad Committed to AFMSS for processing by PRISCILLA PEREZ on 04/09/2018 (18PP1474SE)	
Name (Printed/Typed) KELLY KARDOS	Title REGULATORY COORDINATOR
Signature (Electronic Submission)	Date 04/06/2018

THIS SPACE FOR FEDERAL OR STATE OFFICE USE

Approved By <u>ZOTA STEVENS</u>	Title <u>PETROLEUM ENGINEER</u>	Date <u>04/13/2018</u>
Conditions of approval, if any, are attached. Approval of this notice does not warrant or certify that the applicant holds legal or equitable title to those rights in the subject lease which would entitle the applicant to conduct operations thereon.		
Office <u>Carlsbad</u>		

Title 18 U.S.C. Section 1001 and Title 43 U.S.C. Section 1212, make it a crime for any person knowingly and willfully to make to any department or agency of the United States any false, fictitious or fraudulent statements or representations as to any matter within its jurisdiction.

(Instructions on page 2)

**** BLM REVISED ** BLM REVISED ** BLM REVISED ** BLM REVISED ** BLM REVISED ****

RWP 4-19-18

DRILLING PLAN: BLM COMPLIANCE
(Supplement to BLM 3160-3)

XTO Energy Inc.
Roadhouse Federal 2H
Projected TD: 17317' MD / 10022' TVD
SHL: 180' FSL & 2040' FEL , Section 6, T25S, R29E
BHL: 2440' FSL & 2040' FEL , Section 31, T24S, R29E
Eddy County, NM

1. Geologic Name of Surface Formation

A. Quaternary

2. Estimated Tops of Geological Markers & Depths of Anticipated Fresh Water, Oil or Gas:

Formation	Well Depth (TVD)	Water/Oil/Gas
Rustler	277'	Water
Top of Salt	626'	Water
Base of Salt	2533'	Water
Delaware	2732'	Water
Bone Spring	6443'	Water/Oil/Gas
1st Bone Spring Ss	7379'	Water/Oil/Gas
2nd Bone Spring Ss	8210'	Water/Oil/Gas
3rd Bone Spring Ss	9306'	Water/Oil/Gas
Wolfcamp A	9801'	Water/Oil/Gas
Target/Land Curve	10022'	Water/Oil/Gas

*** Hydrocarbons @ Brushy Canyon

*** Groundwater depth 40' (per NM State Engineers Office).

No other formations are expected to yield oil, gas or fresh water in measurable volumes. The surface fresh water sands will be protected by setting 13-3/8 inch casing @ 610' (25' above top of salt) and circulating cement back to surface. The salt will be isolated by setting 9-5/8 inch casing at 9256' with a DV tool @ 590', and cement will be circulated to surface. An 8-3/4 inch curve and lateral hole will be drilled to TD, where 5-1/2 inch casing will be set and cemented 500 feet into the previous casing.

3. Casing Design

Hole Size	Depth	OD Csg	Weight	Collar	Grade	New/Used	SF Burst	SF Collapse	SF Tension
17-1/2"	0' – 610'	13-3/8"	68	STC	J-55	New	1.22	6.99	16.27
12-1/4"	0' – 9256'	9-5/8"	40	LTC	HCL-80	New	1.63	1.48	2.26
8-3/4"	0' – 17317'	5-1/2"	17	BTC	P-110	New	1.33	1.30	2.51

- XTO requests to utilize centralizers only in the curve after the KOP and only a minimum of one every other joint.
- 9-5/8" Collapse analyzed using 50% evacuation based on regional experience.
- 5-1/2" tension calculated using vertical hanging weight plus the lateral weight multiplied by a friction factor of 0.35

WELLHEAD:

Permanent Wellhead – GE RSH Multibowl System

A. Starting Head: 13-5/8" 5M top flange x 13-3/8" SOW bottom

B. Tubing Head: 13-5/8" 5M bottom flange x 7-1/16" 10M top flange

- Wellhead will be installed by manufacturer's representatives.
- Manufacturer will monitor welding process to ensure appropriate temperature of seal.
- Operator will test the 9-5/8" casing per BLM Onshore Order 2
- Wellhead Manufacturer representative will not be present for BOP test plug installation

4. Cement Program

Surface Casing: 13-3/8", 68 New J-55, STC casing to be set at +/- 610'

Lead: 230 sxs EconoCem-HLTRRC (mixed at 12.9 ppg, 1.87 ft³/sx, 10.13 gal/sx water)

Tail: 300 sxs Halcem-C + 2% CaCl (mixed at 14.8 ppg, 1.35 ft³/sx, 6.39 gal/sx water)

Tail Compressives: 12-hr = 900 psi 24 hr = 1500 psi

Intermediate Casing: 9-5/8", 40 New HCL-80, LTC casing to be set at +/- 9256'

First Stage

Lead: 2710 sxs Halcem-C + 2% CaCl (mixed at 12.9 ppg, 1.88 ft³/sx, 9.61 gal/sx water)

Tail: 230 sxs Halcem-C + 2% CaCl (mixed at 14.8 ppg, 1.33 ft³/sx, 6.39 gal/sx water)

Tail Compressives: 12-hr = 900 psi 24 hr = 1500 psi

If losses are severe, a DV tool will be set @ 590' (100' below the surface shoe).

Second Stage

Lead: 110 sxs Halcem-C + 2% CaCl (mixed at 12.9 ppg, 1.88 ft³/sx, 9.61 gal/sx water)

Lead Compressives: 12-hr = 900 psi 24 hr = 1500 psi

Production Casing: 5-1/2", 17 New P-110, BTC casing to be set at +/- 17317'

Lead: 20 sxs NeoCem (mixed at 10.5 ppg, 2.69 ft³/sx, 12.26 gal/sx water)

Tail: 1700 sxs VersaCem (mixed at 13.2 ppg, 1.61 ft³/sx, 8.38 gal/sx water)

Tail Compressives: 12-hr = 1375 psi 24 hr = 2285 psi

5. Pressure Control Equipment

The blow out preventer equipment (BOP) for this well consists of a 13-5/8" minimum 5M Hydriil and a 13-5/8" minimum 5M Double Ram BOP. MASP should not exceed 3528 psi.

All BOP testing will be done by an independent service company. Annular pressure tests will be limited to 50% of the working pressure. When nipping up on the 13-5/8" 5M bradenhead and flange, the BOP test will be limited to 5000 psi. When nipping up on the 9-5/8", the BOP will be tested to a minimum of 5000 psi. All BOP tests will include a low pressure test as per BLM regulations. The 5M BOP diagrams are attached. Blind rams will be functioned tested each trip, pipe rams will be functioned tested each day.

A variance is requested to allow use of a flex hose as the choke line from the BOP to the Choke Manifold. If this hose is used, a copy of the manufacturer's certification and pressure test chart will be kept on the rig. Attached is an example of a certification and pressure test chart. The manufacturer does not require anchors.

6. Proposed Mud Circulation System

INTERVAL	Hole Size	Mud Type	MW (ppg)	Viscosity (sec/qt)	Fluid Loss (cc)
0' to 610'	17-1/2"	FW/Native	8.4-8.8	35-40	NC
610' to 9256'	12-1/4"	Brine/Gel Sweeps	9.8-10.2	30-32	NC
9256' to 17317'	8-3/4"	FW / Cut Brine / Polymer	10.7 - 11	28-40	NC - 20

The necessary mud products for weight addition and fluid loss control will be on location at all times.

Spud with fresh water/native mud. Drill out from under 13-3/8" surface casing with brine solution. A 9.8ppg-10.2ppg brine mud will be used while drilling through the salt formation. Use fibrous materials as needed to control seepage and lost circulation. Pump viscous sweeps as needed for hole cleaning. Pump speed will be recorded on a daily drilling report after mudding up. A Pason or Totco will be used to detect changes in loss or gain of mud volume. A mud test will be performed every 24 hours to determine: density, viscosity, strength, filtration and pH as necessary. Use available solids controls equipment to help keep mud weight down after mud up. Rig up solids control equipment to operate as a closed loop system.

7. Auxiliary Well Control and Monitoring Equipment

- A. A Kelly cock will be in the drill string at all times.
- B. A full opening drill pipe stabbing valve having appropriate connections will be on the rig floor at all times.
- C. H2S monitors will be on location when drilling below the 13-3/8" casing.

8. Logging, Coring and Testing Program

Mud Logger: Mud Logging Unit (2 man) below intermediate casing.

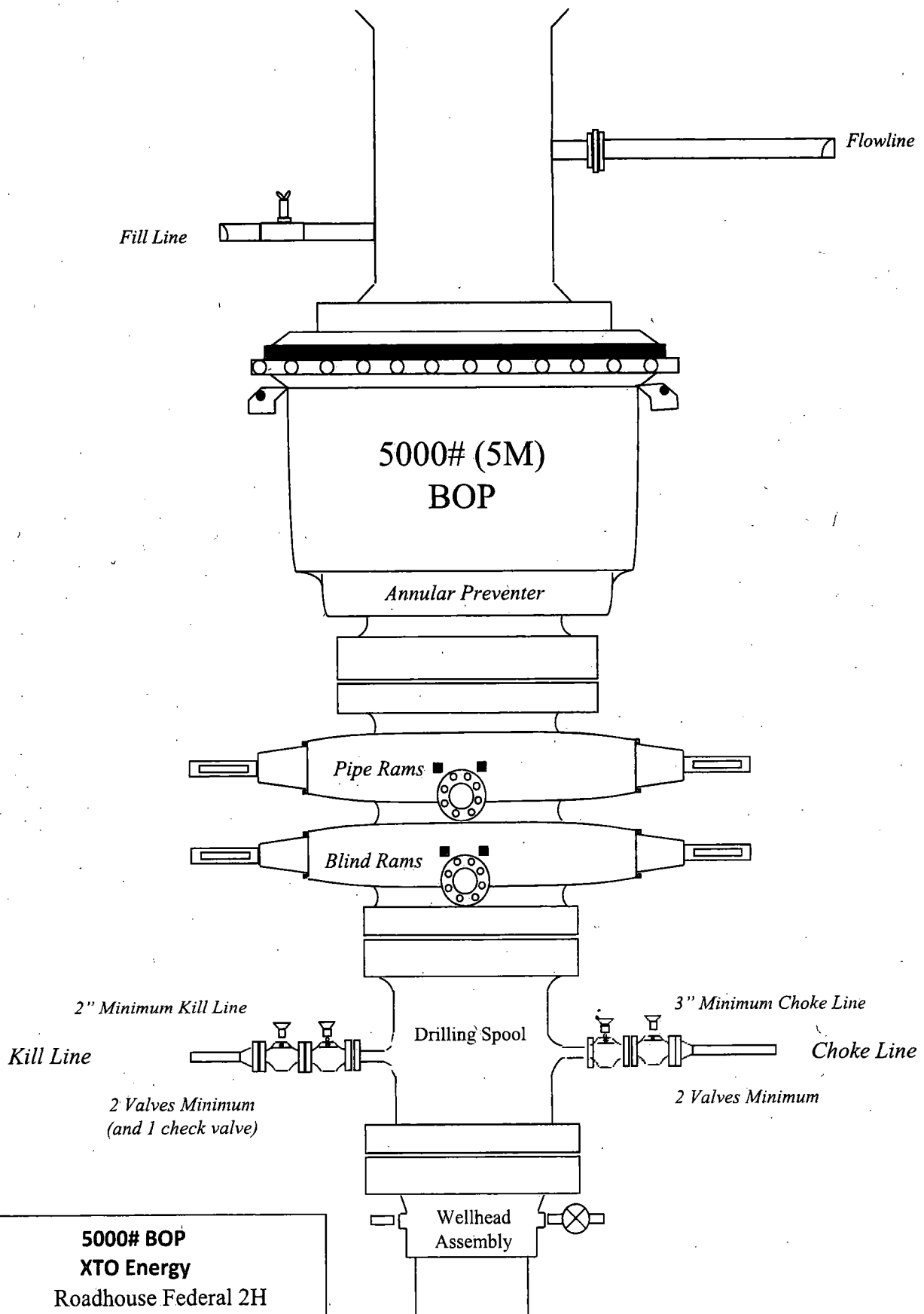
Open hole logging will not be done on this well.

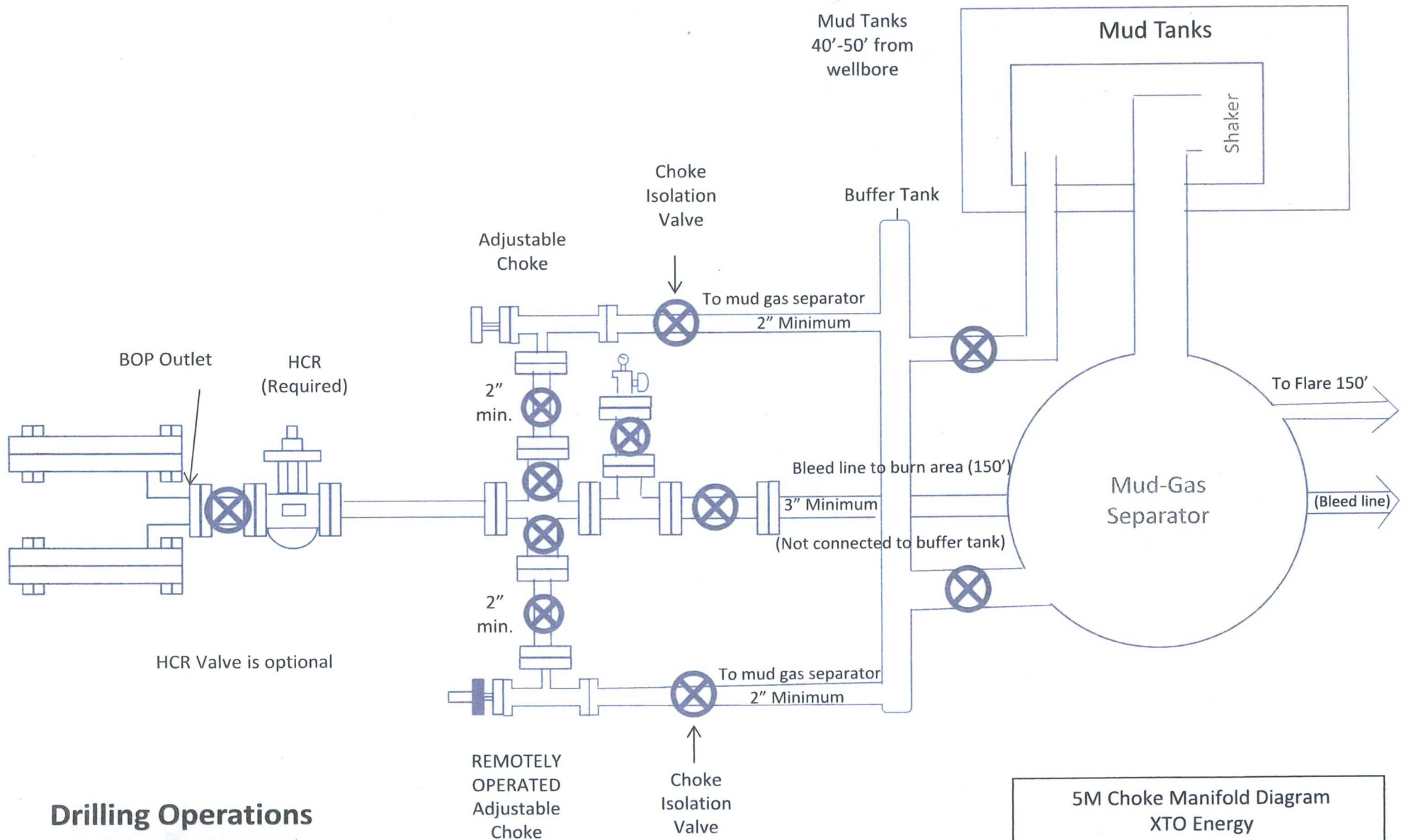
9. Abnormal Pressures and Temperatures / Potential Hazards

None Anticipated. BHT of 145 to 165 F is anticipated. No H2S is expected but monitors will be in place to detect any H2S occurrences. Should these circumstances be encountered the operator and drilling contractor are prepared to take all necessary steps to ensure safety of all personnel and environment. Lost circulation could occur but is not expected to be a serious problem in this area and hole seepage will be compensated for by additions of small amounts of LCM in the drilling fluid. The maximum anticipated bottom hole pressure for this well is 5733 psi.

10. Anticipated Starting Date and Duration of Operations

Road and location construction will begin after Santa Fe and BLM have approved the APD. Anticipated spud date will be as soon after Santa Fe and BLM approval and as soon as a rig will be available. Move in operations and drilling is expected to take 40 days. If production casing is run, an additional 30 days will be needed to complete well and construct surface facilities and/or lay flow lines in order to place well on production.





Drilling Operations **Choke Manifold** **5M Service**

5M Choke Manifold Diagram
XTO Energy
Roadhouse Federal 2H



GATES E & S NORTH AMERICA, INC
DU-TEX
134 44TH STREET
CORPUS CHRISTI, TEXAS 78405

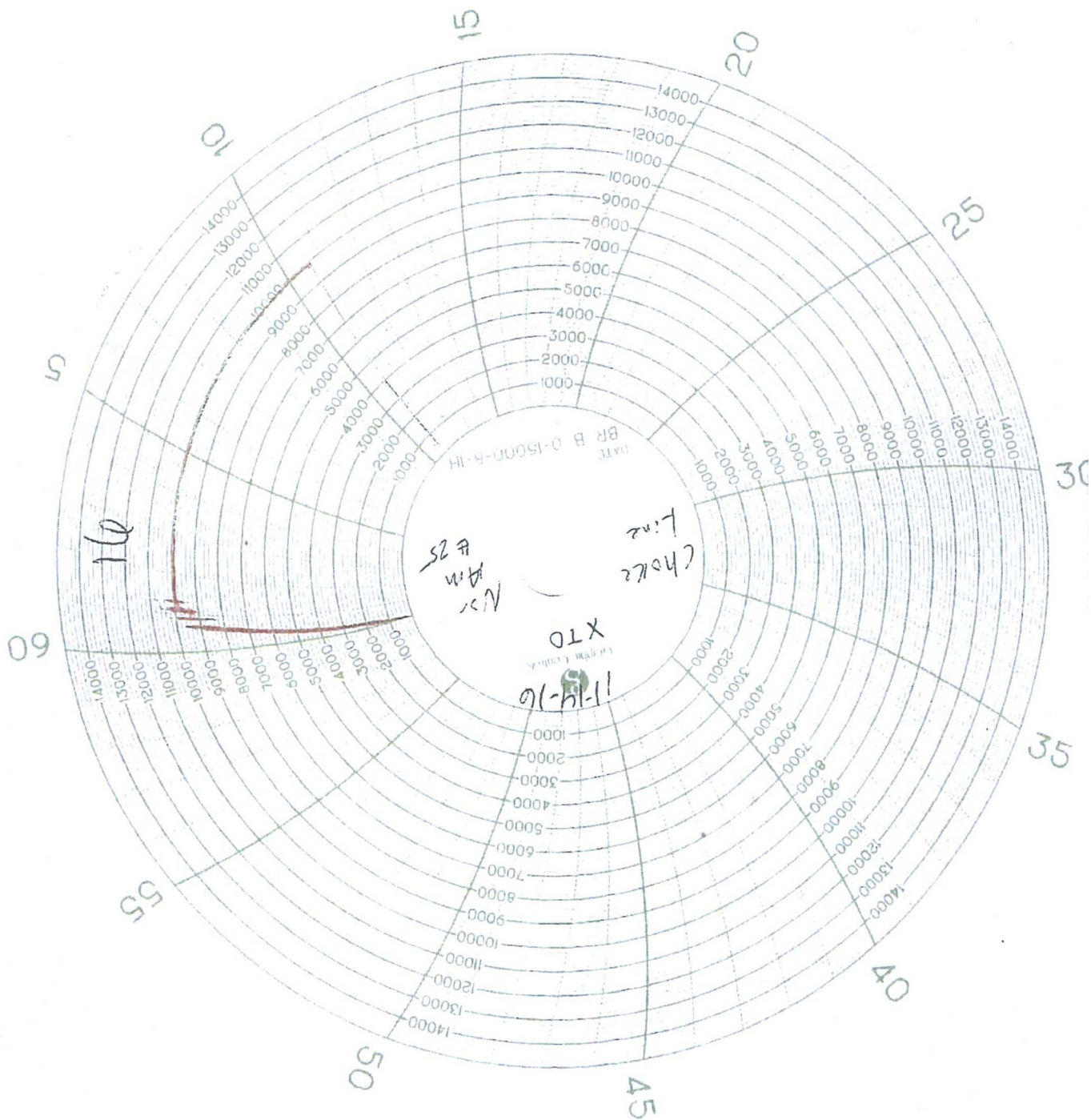
PHONE: 361-887-9807
FAX: 361-887-0812
EMAIL: crpe@s@gates.com
WEB: www.gates.com

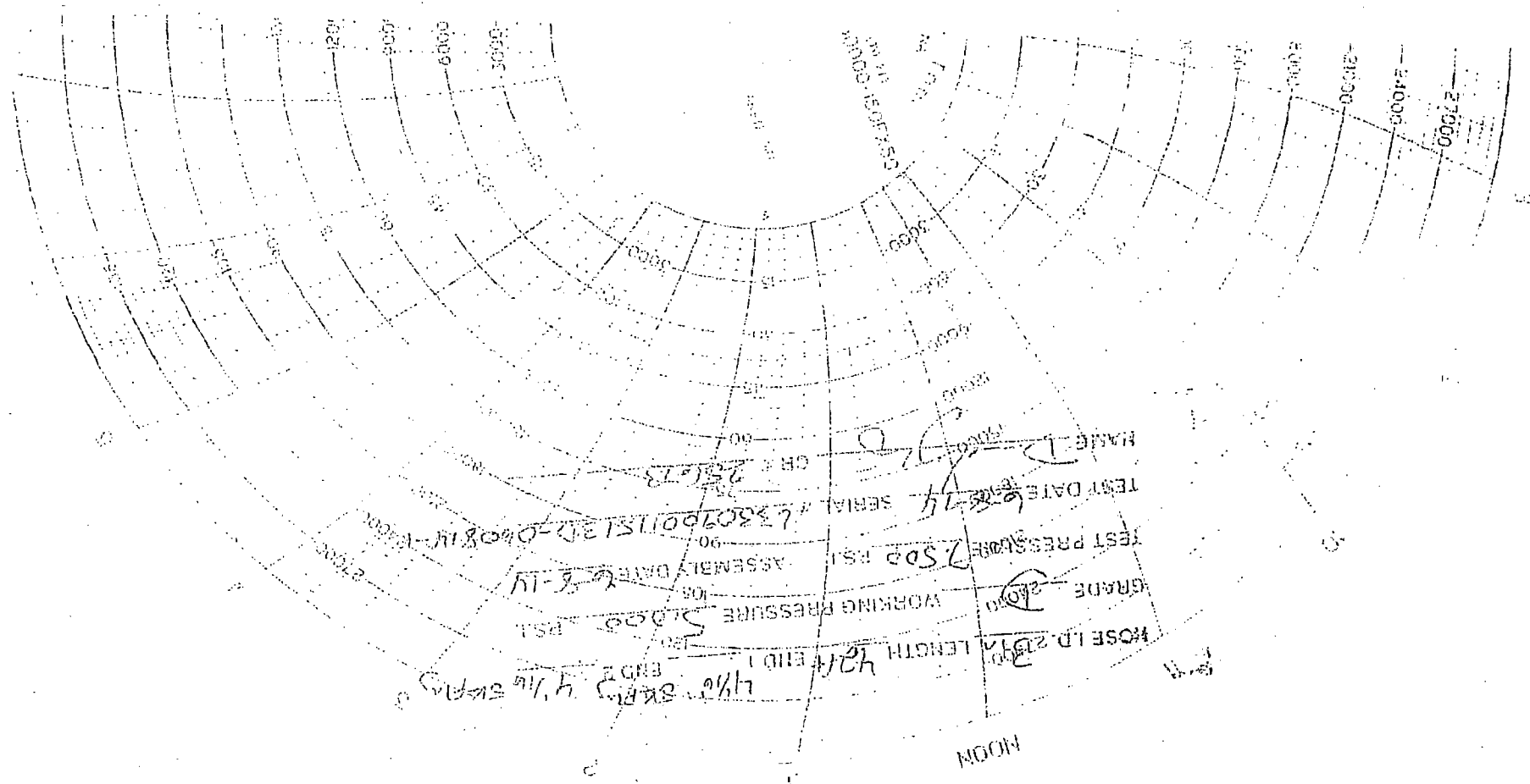
GRADE D PRESSURE TEST CERTIFICATE

Customer :	AUSTIN DISTRIBUTING	Test Date:	6/8/2014
Customer Ref. :	PENDING	Hose Serial No.:	D-060814-1
Invoice No. :	201709	Created By:	NORMA
Product Description:	FD3.042.0R41/16.5KFLGE;E LE		
End Fitting 1 :	4 1/16 in.5K FLG	End Fitting 2 :	4 1/16 in.5K FLG
Gates Part No. :	4774-6001	Assembly Code :	L33090011513D-060814-1
Working Pressure :	5,000 PSI	Test Pressure :	7,500 PSI

Gates E & S North America, Inc. certifies that the following hose assembly has been tested to the Gates Oilfield Roughneck Agreement/Specification requirements and passed the 15 minute hydrostatic test per API Spec 7K/Q1, Fifth Edition, June 2010, Test pressure 9.6.7 and per Table 9 to 7,500 psi in accordance with this product number. Hose burst pressure 9.6.7.2 exceeds the minimum of 2.5 times the working pressure per Table 9.

Quality:	QUALITY	Technical Supervisor :	PRODUCTION
Date :	6/8/2014	Date :	6/8/2014
Signature :		Signature :	





NAME D. J. D.
TEST DATE 6-27-74
TEST PRESSURE 7500 PSI
GRADE 2500
HOSE I.D. 2 1/2" LENGTH 100' END 1 4 1/2" SWG END 2 4 1/2" SWG
WORKING PRESSURE 5000 PSI
ASSEMBLY DATE 6-14-74
SERIAL # 6380790115137-040814-18000
CH # 256-73

APR 18 2018

**PECOS DISTRICT
DRILLING CONDITIONS OF APPROVAL**

RECEIVED

OPERATOR'S NAME:	XTO Energy, INC.
LEASE NO.:	NMNM111533
WELL NAME & NO.:	Roadhouse Federal 1H
SURFACE HOLE FOOTAGE:	180'/S & 1680'/E
BOTTOM HOLE FOOTAGE:	2440'/S & 1680'/E
LOCATION:	Section 6, T.25 S., R.29 E., NMPM
COUNTY:	Eddy County, New Mexico

COA

All previous COAs still apply expect the following:

H2S	<input type="radio"/> Yes	<input checked="" type="radio"/> No	
Potash	<input checked="" type="radio"/> None	<input type="radio"/> Secretary	<input type="radio"/> R-111-P
Cave/Karst Potential	<input type="radio"/> Low	<input checked="" type="radio"/> Medium	<input type="radio"/> High
Variance	<input type="radio"/> None	<input checked="" type="radio"/> Flex Hose	<input type="radio"/> Other
Wellhead	<input checked="" type="radio"/> Conventional	<input type="radio"/> Multibowl	<input type="radio"/> Both
Other	<input type="checkbox"/> 4 String Area	<input type="checkbox"/> Capitan Reef	<input type="checkbox"/> WIPP

A. Hydrogen Sulfide

Hydrogen Sulfide (H2S) monitors shall be installed prior to drilling out the surface shoe. If H2S is detected in concentrations greater than 100 ppm, the Hydrogen Sulfide area shall meet Onshore Order 6 requirements, which includes equipment and personnel/public protection items. If Hydrogen Sulfide is encountered, provide measured values and formations to the BLM.

B. CASING

1. The **13-3/8** inch surface casing shall be set at approximately **610** feet (a minimum of 25 feet into the Rustler Anhydrite and above the salt) and cemented to the surface.
 - a. If cement does not circulate to the surface, the appropriate BLM office shall be notified and a temperature survey utilizing an electronic type temperature survey with surface log readout will be used or a cement bond log shall be run to verify the top of the cement. Temperature survey will be run a minimum of six hours after pumping cement and ideally between 8-10 hours after completing the cement job.
 - b. Wait on cement (WOC) time for a primary cement job will be a minimum of **8 hours** or 500 pounds compressive strength, whichever is greater. (This is to include the lead cement).

- c. Wait on cement (WOC) time for a remedial job will be a minimum of 4 hours after bringing cement to surface or 500 pounds compressive strength, whichever is greater.
- d. If cement falls back, remedial cementing will be done prior to drilling out that string.

Operator shall filled 1/3rd casing with fluid while running intermediate casing to maintain collapse safety factor.

2. The minimum required fill of cement behind the 9-5/8 inch intermediate casing is:

Operator has proposed a DV tool, the depth may be adjusted as long as the cement is changed proportionally. The DV tool may be cancelled if cement circulates to surface on the first stage.

- a. First stage to DV tool: Cement to circulate. If cement does not circulate off the DV tool, contact the appropriate BLM office before proceeding with second stage cement job.
 - Second stage above DV tool: Cement to surface. If cement does not circulate, contact the appropriate BLM office. **Additional cement maybe required. Excess calculates to 5%.**
 - ❖ In Medium Cave/Karst Areas if cement does not circulate to surface on the first two casing strings, the cement on the 3rd casing string must come to surface.
3. The minimum required fill of cement behind the 5-1/2 inch production casing is:
 - Cement should tie-back at least 200 feet into previous casing string. Operator shall provide method of verification.

C. PRESSURE CONTROL

1. Variance approved to use flex line from BOP to choke manifold. Manufacturer's specification to be readily available. No external damage to flex line. Flex line to be installed as straight as possible (no hard bends).
2. Minimum working pressure of the blowout preventer (BOP) and related equipment (BOPE) required for drilling below the surface casing shoe shall be **5000 (5M) psi**.

GENERAL REQUIREMENTS

The BLM is to be notified in advance for a representative to witness:

- a. Spudding well (minimum of 24 hours)
- b. Setting and/or Cementing of all casing strings (minimum of 4 hours)
- c. BOPE tests (minimum of 4 hours)

☒ Chaves and Roosevelt Counties

Call the Roswell Field Office, 2909 West Second St., Roswell NM 88201.

During office hours call (575) 627-0272.

After office hours call (575)

☒ Eddy County

Call the Carlsbad Field Office, 620 East Greene St., Carlsbad, NM 88220,

(575) 361-2822

☒ Lea County

Call the Hobbs Field Station, 414 West Taylor, Hobbs NM 88240, (575)

393-3612

1. Unless the production casing has been run and cemented or the well has been properly plugged, the drilling rig shall not be removed from over the hole without prior approval.
 - a. In the event the operator has proposed to drill multiple wells utilizing a skid/walking rig. Operator shall secure the wellbore on the current well, after installing and testing the wellhead, by installing a blind flange of like pressure rating to the wellhead and a pressure gauge that can be monitored while drilling is performed on the other well(s).
 - b. When the operator proposes to set surface casing with Spudder Rig
 - Notify the BLM when moving in and removing the Spudder Rig.
 - Notify the BLM when moving in the 2nd Rig. Rig to be moved in within 90 days of notification that Spudder Rig has left the location.
 - BOP/BOPE test to be conducted per Onshore Oil and Gas Order No. 2 as soon as 2nd Rig is rigged up on well.
2. Floor controls are required for 3M or Greater systems. These controls will be on the rig floor, unobstructed, readily accessible to the driller and will be operational at all times during drilling and/or completion activities. Rig floor is defined as the area immediately around the rotary table; the area immediately above the substructure on which the draw works are located, this does not include the dog house or stairway area.
3. The record of the drilling rate along with the GR/N well log run from TD to surface (horizontal well – vertical portion of hole) shall be submitted to the BLM office as well as all other logs run on the borehole 30 days from completion. If available, a

digital copy of the logs is to be submitted in addition to the paper copies. The Rustler top and top and bottom of Salt are to be recorded on the Completion Report.

A. CASING

1. Changes to the approved APD casing program need prior approval if the items substituted are of lesser grade or different casing size or are Non-API. The Operator can exchange the components of the proposal with that of superior strength (i.e. changing from J-55 to N-80, or from 36# to 40#). Changes to the approved cement program need prior approval if the altered cement plan has less volume or strength or if the changes are substantial (i.e. Multistage tool, ECP, etc.). The initial wellhead installed on the well will remain on the well with spools used as needed.
2. Wait on cement (WOC) for Potash Areas: After cementing but before commencing any tests, the casing string shall stand cemented under pressure until both of the following conditions have been met: 1) cement reaches a minimum compressive strength of 500 psi for all cement blends, 2) until cement has been in place at least 24 hours. WOC time will be recorded in the driller's log. The casing integrity test can be done (prior to the cement setting up) immediately after bumping the plug.
3. Wait on cement (WOC) for Water Basin: After cementing but before commencing any tests, the casing string shall stand cemented under pressure until both of the following conditions have been met: 1) cement reaches a minimum compressive strength of 500 psi at the shoe, 2) until cement has been in place at least 8 hours. WOC time will be recorded in the driller's log. See individual casing strings for details regarding lead cement slurry requirements. The casing integrity test can be done (prior to the cement setting up) immediately after bumping the plug.
4. Provide compressive strengths including hours to reach required 500 pounds compressive strength prior to cementing each casing string. Have well specific cement details onsite prior to pumping the cement for each casing string.
5. No pea gravel permitted for remedial or fall back remedial without prior authorization from the BLM engineer.
6. **On that portion of any well approved for a 5M BOPE system or greater, a pressure integrity test of each casing shoe shall be performed. Formation at the shoe shall be tested to a minimum of the mud weight equivalent anticipated to control the formation pressure to the next casing depth or at total depth of the well. This test shall be performed before drilling more than 20 feet of new hole.**
7. If hardband drill pipe is rotated inside casing, returns will be monitored for metal. If metal is found in samples, drill pipe will be pulled and rubber protectors which have a larger diameter than the tool joints of the drill pipe will be installed prior to continuing drilling operations.

8. Whenever a casing string is cemented in the R-111-P potash area, the NMOCD requirements shall be followed.

B. PRESSURE CONTROL

1. All blowout preventer (BOP) and related equipment (BOPE) shall comply with well control requirements as described in Onshore Oil and Gas Order No. 2 and API RP 53 Sec. 17.
2. If a variance is approved for a flexible hose to be installed from the BOP to the choke manifold, the following requirements apply: The flex line must meet the requirements of API 16C. Check condition of flexible line from BOP to choke manifold, replace if exterior is damaged or if line fails test. Line to be as straight as possible with no hard bends and is to be anchored according to Manufacturer's requirements. The flexible hose can be exchanged with a hose of equal size and equal or greater pressure rating. Anchor requirements, specification sheet and hydrostatic pressure test certification matching the hose in service, to be onsite for review. These documents shall be posted in the company man's trailer and on the rig floor.
3. 5M or higher system requires an HCR valve, remote kill line and annular to match. The remote kill line is to be installed prior to testing the system and tested to stack pressure.
4. If the operator has proposed a multi-bowl wellhead assembly in the APD. The following requirements must be met:
 - a. Wellhead shall be installed by manufacturer's representatives, submit documentation with subsequent sundry.
 - b. If the welding is performed by a third party, the manufacturer's representative shall monitor the temperature to verify that it does not exceed the maximum temperature of the seal.
 - c. Manufacturer representative shall install the test plug for the initial BOP test.
 - d. If the cement does not circulate and one inch operations would have been possible with a standard wellhead, the well head shall be cut off, cementing operations performed and another wellhead installed.
 - e. Whenever any seal subject to test pressure is broken, all the tests in OOGO2.III.A.2.i must be followed.
5. The appropriate BLM office shall be notified a minimum of 4 hours in advance for a representative to witness the tests.
 - a. In a water basin, for all casing strings utilizing slips, these are to be set as soon as the crew and rig are ready and any fallback cement remediation has been done. The casing cut-off and BOP installation can be initiated four hours after

installing the slips, which will be approximately six hours after bumping the plug. For those casing strings not using slips, the minimum wait time before cut-off is eight hours after bumping the plug. BOP/BOPE testing can begin after cut-off or once cement reaches 500 psi compressive strength (including lead when specified), whichever is greater. However, if the float does not hold, cut-off cannot be initiated until cement reaches 500 psi compressive strength (including lead when specified).

- b. In potash areas, for all casing strings utilizing slips, these are to be set as soon as the crew and rig are ready and any fallback cement remediation has been done. For all casing strings, casing cut-off and BOP installation can be initiated at twelve hours after bumping the plug. However, **no tests** shall commence until the cement has had a minimum of 24 hours setup time, except the casing pressure test can be initiated immediately after bumping the plug (only applies to single stage cement jobs).
- c. The tests shall be done by an independent service company utilizing a test plug. The results of the test shall be reported to the appropriate BLM office.
- d. The test shall be run on a 5000 psi chart for a 2-3M BOP/BOP, on a 10000 psi chart for a 5M BOP/BOPE and on a 15000 psi chart for a 10M BOP/BOPE. If a linear chart is used, it shall be a one hour chart. A circular chart shall have a maximum 2 hour clock. If a twelve hour or twenty-four hour chart is used, tester shall make a notation that it is run with a two hour clock.
- e. All tests are required to be recorded on a calibrated test chart. A copy of the BOP/BOPE test chart and a copy of independent service company test will be submitted to the appropriate BLM office.
- f. The BOP/BOPE test shall include a low pressure test from 250 to 300 psi. The test will be held for a minimum of 10 minutes. This test shall be performed prior to the test at full stack pressure.
- g. BOP/BOPE must be tested by an independent service company within 500 feet of the top of the Wolfcamp formation if the time between the setting of the intermediate casing and reaching this depth exceeds 20 days. This test does not exclude the test prior to drilling out the casing shoe as per Onshore Order No. 2.

C. DRILLING MUD

Mud system monitoring equipment, with derrick floor indicators and visual and audio alarms, shall be operating before drilling into the Wolfcamp formation, and shall be used until production casing is run and cemented.

D. WASTE MATERIAL AND FLUIDS

All waste (i.e. drilling fluids, trash, salts, chemicals, sewage, gray water, etc.) created as a result of drilling operations and completion operations shall be safely contained and disposed of properly at a waste disposal facility. No waste material or fluid shall be disposed of on the well location or surrounding area.

Porto-johns and trash containers will be on-location during fracturing operations or any other crew-intensive operations.

Waste Minimization Plan (WMP)

In the interest of resource development, submission of additional well gas capture development plan information is deferred but may be required by the BLM Authorized Officer at a later date.

ZS 041318

Medium

13 3/8	surface csg in a	17 1/2	inch hole.	Design Factors			SURFACE		
Segment	#/ft	Grade	Coupling	Joint	Collapse	Burst	Length	Weight	
"A"	68.00	J 55	ST&C	16.27	6.99	0.7	610	41,480	
"B"							0	0	
w/8.4#/g mud, 30min Sfc Csg Test psig: 1,500			Tail Cmt	does	circ to sfc.		Totals:	610 41,480	
Comparison of Proposed to Minimum Required Cement Volumes									
Hole	Annular	1 Stage	1 Stage	Min	1 Stage	Drilling	Calc	Req'd	Min Dist
Size	Volume	Cmt Sx	CuFt Cmt	Cu Ft	% Excess	Mud Wt	MASP	BOPE	Hole-Cplg
17 1/2	0.6946	530	835	477	75	8.80	2868	3M	1.56

Burst Frac Gradient(s) for Segment(s) A, B = , b All > 0.70, OK.

9 5/8	casing inside the	13 3/8	Design Factors				INTERMEDIATE		
Segment	#/ft	Grade	Coupling	Joint	Collapse	Burst	Length	Weight	
"A"	40.00	HCL 80	LT&C	2.26	0.86	1	9,256	370,240	
"B"							0	0	
w/8.4#/g mud, 30min Sfc Csg Test psig:							Totals:	9,256	370,240
The cement volume(s) are intended to achieve a top of				0	ft from surface or a		610	overlap.	
Hole	Annular	1 Stage	1 Stage	Min	1 Stage	Drilling	Calc	Req'd	Min Dist
Size	Volume	Cmt Sx	CuFt Cmt	Cu Ft	% Excess	Mud Wt	MASP	BOPE	Hole-Cplg
12 1/4	0.3132	look ↘	0	2931		10.20	3522	5M	0.81
D V Tool(s):			590			sum of sx		Σ CuFt	Σ%excess
t by stage % :		98	5			3050		5608	91
Class 'C' tail cmt yld > 1.35									
ALT. COLLAPSE SF: 086*1.5=1.29									

Tail cmt									
5 1/2	casing inside the		9 5/8	Design Factors			PRODUCTION		
Segment	#/ft	Grade	Coupling	Body	Collapse	Burst	Length	Weight	
"A"	17.00	P 110	BUTT	3.20	1.39	1.86	9,449	160,633	
"B"	17.00	P 110	BUTT	7.95	1.20	1.86	7,868	133,756	
w/8.4#/g mud, 30min Sfc Csg Test psig: 2,079							Totals:	17,317	294,389
B	would be:			56.04	1.31	if it were a vertical wellbore.			
No Pilot Hole Planned		MTD	Max VTD	Csg VD	Curve KOP	Dogleg°	Severity°	MEOC	
		17317	10022	10022	9449	90	10	10349	
The cement volume(s) are intended to achieve a top of				9056	ft from surface or a		200	overlap.	
Hole	Annular	1 Stage	1 Stage	Min	1 Stage	Drilling	Calc	Req'd	Min Dist
Size	Volume	Cmt Sx	CuFt Cmt	Cu Ft	% Excess	Mud Wt	MASP	BOPE	Hole-Cplg
8 3/4	0.2526	1720	2791	2094	33	11.00			1.35
Class 'H' tail cmt yld > 1.20									