

District I  
1625 N. French Dr., Hobbs, NM 88240  
District II  
811 S. First St., Artesia, NM 88210  
District III  
1000 Rio Brazos Road, Aztec, NM 87410  
District IV  
1220 S. St. Francis Dr., Santa Fe, NM 87505

State of New Mexico  
Energy, Minerals and Natural Resources Department

Oil Conservation Division  
1220 South St. Francis Dr.  
Santa Fe, NM 87505

**NM OIL CONSERVATION  
ARTESIA DISTRICT**

Submit Original  
to Appropriate  
District Office

MAY 16 2018

**GAS CAPTURE PLAN**

Date: 1-16-17

**RECEIVED**

☒ Original

Operator & OGRID No.: Mewbourne Oil Company - 14744

☐ Amended - Reason for Amendment: \_\_\_\_\_

This Gas Capture Plan outlines actions to be taken by the Operator to reduce well/production facility flaring/venting for new completion (new drill, recomple to new zone, re-frac) activity.

*Note: Form C-129 must be submitted and approved prior to exceeding 60 days allowed by Rule (Subsection A of 19.15.18.12 NMAC).*

**Well(s)/Production Facility – Name of facility**

The well(s) that will be located at the production facility are shown in the table below.

Well Name	API	Well Location (ULSTR)	Footages	Expected MCF/D	Flared or Vented	Comments
OXBOW 26/25 W2DA FED #2H		D-26-25S-28E	490' FNL & 365' FWL	0	NA	ONLINE AFTER FRAC
30-015-44972						

**Gathering System and Pipeline Notification**

Well(s) will be connected to a production facility after flowback operations are complete, if gas transporter system is in place. The gas produced from production facility is dedicated to Western and will be connected to Western low/high pressure gathering system located in \_\_\_\_\_ County, New Mexico. It will require \_\_\_\_\_' of pipeline to connect the facility to low/high pressure gathering system. Mewbourne Oil Company provides (periodically) to Western a drilling, completion and estimated first production date for wells that are scheduled to be drilled in the foreseeable future. In addition, Mewbourne Oil Company and Western have periodic conference calls to discuss changes to drilling and completion schedules. Gas from these wells will be processed at Western Processing Plant located in Sec. 36, Blk. 58 T1S, Culberson County, Texas. The actual flow of the gas will be based on compression operating parameters and gathering system pressures.

**Flowback Strategy**

After the fracture treatment/completion operations, well(s) will be produced to temporary production tanks and gas will be flared or vented. During flowback, the fluids and sand content will be monitored. When the produced fluids contain minimal sand, the wells will be turned to production facilities. Gas sales should start as soon as the wells start flowing through the production facilities, unless there are operational issues on Western system at that time. Based on current information, it is Operator's belief the system can take this gas upon completion of the well(s).

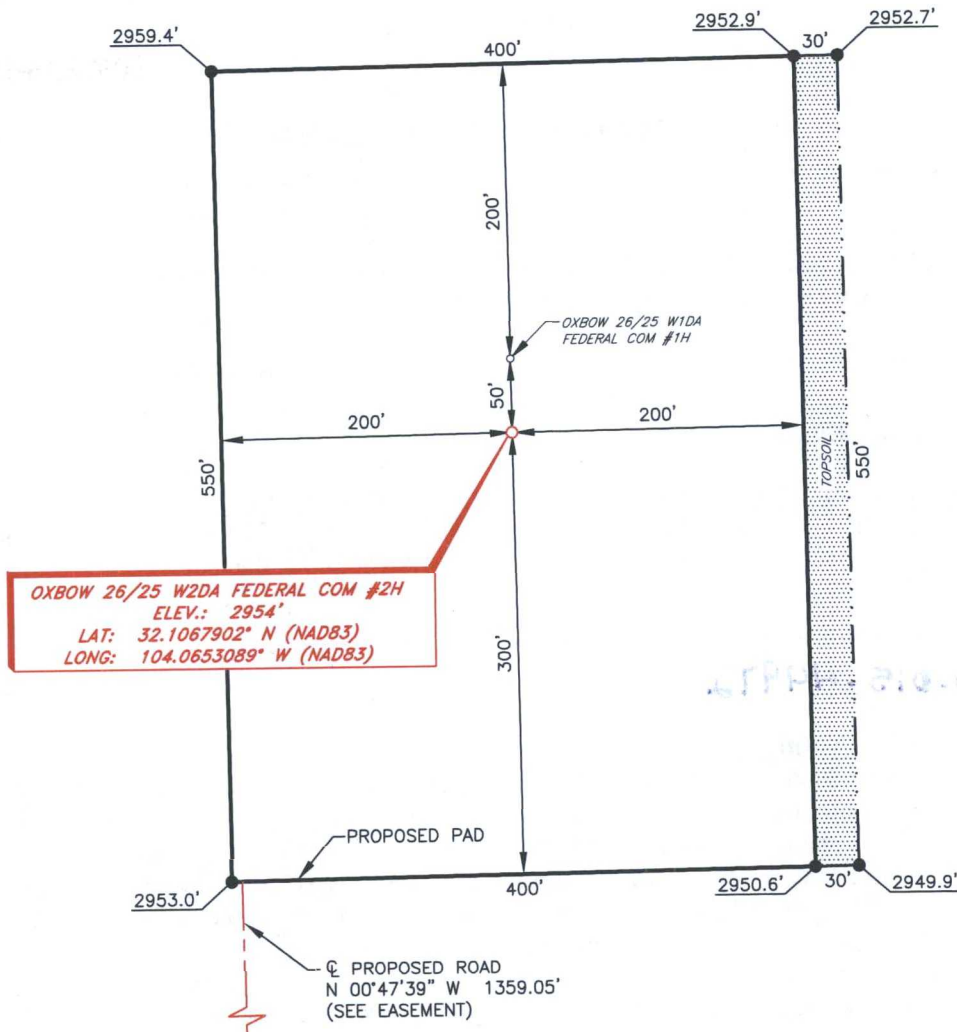
Safety requirements during cleanout operations from the use of underbalanced air cleanout systems may necessitate that sand and non-pipeline quality gas be vented and/or flared rather than sold on a temporary basis.

**Alternatives to Reduce Flaring**

Below are alternatives considered from a conceptual standpoint to reduce the amount of gas flared.

- Power Generation – On lease
  - Only a portion of gas is consumed operating the generator, remainder of gas will be flared
- Compressed Natural Gas – On lease
  - Gas flared would be minimal, but might be uneconomical to operate when gas volume declines
- NGL Removal – On lease
  - Plants are expensive, residue gas is still flared, and uneconomical to operate when gas volume declines

**MEWBOURNE OIL COMPANY**  
**OXBOW 26/25 W2DA FEDERAL COM #2H**  
**(490' FNL & 365' FWL)**  
**SECTION 26, T25S, R28E**  
**N. M. P. M., EDDY COUNTY, NEW MEXICO**



DIRECTIONS TO LOCATION

From the intersection of U.S. Hwy 285 and CR-724 (White City Rd.),  
 Go North on U.S. Hwy 285 approx. 2.8 miles to a lease road on the right;  
 Turn right and go East approx. 0.4 miles to proposed road on the left;  
 Turn left on proposed road and go North approx. 0.25 miles to proposed  
 location on the right.

I, R. M. Howett, a N. M. Professional Surveyor, hereby certify that  
 I prepared this unclassified survey of a well location from an  
 actual survey made on the ground under my direct supervision,  
 said survey and plat meet the Min. Stds. for Land Surveying in  
 the State of N. M. and are true and correct to the best of my  
 knowledge and belief.

*Robert M. Howett*

Robert M. Howett NM PS 19680



Copyright 2017 - All Rights Reserved

SCALE: 1" = 100'  
 0 50' 100'  
 BEARINGS ARE GRID NAD 83  
 NM EAST  
 DISTANCES ARE HORIZ. GROUND.

NO.	REVISION	DATE
JOB NO.:	LS1801036	
DWG. NO.:	1801036PAD	

**RRC**

308 W. BROADWAY ST., HOBBS, NM 88240 (575) 964-8200

SCALE: 1" = 100'
DATE: 12-19-2017
SURVEYED BY: ML/TF
DRAWN BY: AiAC
APPROVED BY: RMH
SHEET : 1 OF 1