

District I  
1625 N. French Dr., Hobbs, NM 88240  
District II  
811 S. First St., Artesia, NM 88210  
District III  
1000 Rio Brazos Road, Aztec, NM 87410  
District IV  
1220 S. St. Francis Dr., Santa Fe, NM 87505

State of New Mexico  
Energy, Minerals and Natural Resources Department

Submit Original  
to Appropriate  
District Office

Oil Conservation Division  
1220 South St. Francis Dr.  
Santa Fe, NM 87505

**NM OIL CONSERVATION  
ARTESIA DISTRICT**

MAY 16 2018

**GAS CAPTURE PLAN**

Date: 2-2-18

**RECEIVED**

X Original

Operator & OGRID No.: Tap Rock Operating, LLC (372043)

☐ Amended - Reason for Amendment: \_\_\_\_\_

This Gas Capture Plan outlines actions to be taken by the Operator to reduce well/production facility flaring/venting for new completion (new drill, recomple to new zone, re-frac) activity.

*Note: Form C-129 must be submitted and approved prior to exceeding 60 days allowed by Rule (Subsection A of 19.15.18.12 NMAC).*

**Well(s)/Production Facility – Name of facility**

The well(s) that will be located at the production facility are shown in the table below.

Well	API	SHL (ULSTR)	SHL Footages	Expected MCF/D	Flared or Vented	Comments
Double Diamond Fed Com 238H	30-015- <b>44981</b>	P-14-24s-31e	305' FSL & 860' FEL	750	<30 days	flare until well clean, then connect

**Gathering System and Pipeline Notification**

Well(s) will be connected to a production facility after flowback operations are complete, if gas transporter system is in place. Gas produced from this production facility has not yet been dedicated. However, a possible connection is an existing Agave pipeline that is 1/8 mile northeast. Operator will provide (periodically) to Gas Transporter a drilling, completion and estimated first production date for wells that are scheduled to be drilled in the foreseeable future. In addition, Operator and Gas Transporter will have periodic conference calls to discuss changes to drilling and completion schedules. Gas from these wells will be processed at Gas Transporter Processing Plant at an as yet undetermined location. The actual flow of the gas will be based on compression operating parameters and gathering system pressures.

**Flowback Strategy**

After the fracture treatment/completion operations, well(s) will be produced to temporary production tanks and gas will be flared or vented. During flowback, the fluids and sand content will be monitored. When the produced fluids contain minimal sand, the wells will be turned to production facilities. Gas sales should start as soon as the wells start flowing through the production facilities, unless there are operational issues on Gas Transporter system at that time. Based on current information, it is Operator's belief the system ultimately can take this gas upon completion of the well(s).

Safety requirements during cleanout operations from the use of underbalanced air cleanout systems may necessitate that sand and non-pipeline quality gas be vented and/or flared rather than sold on a temporary basis.

**Alternatives to Reduce Flaring**

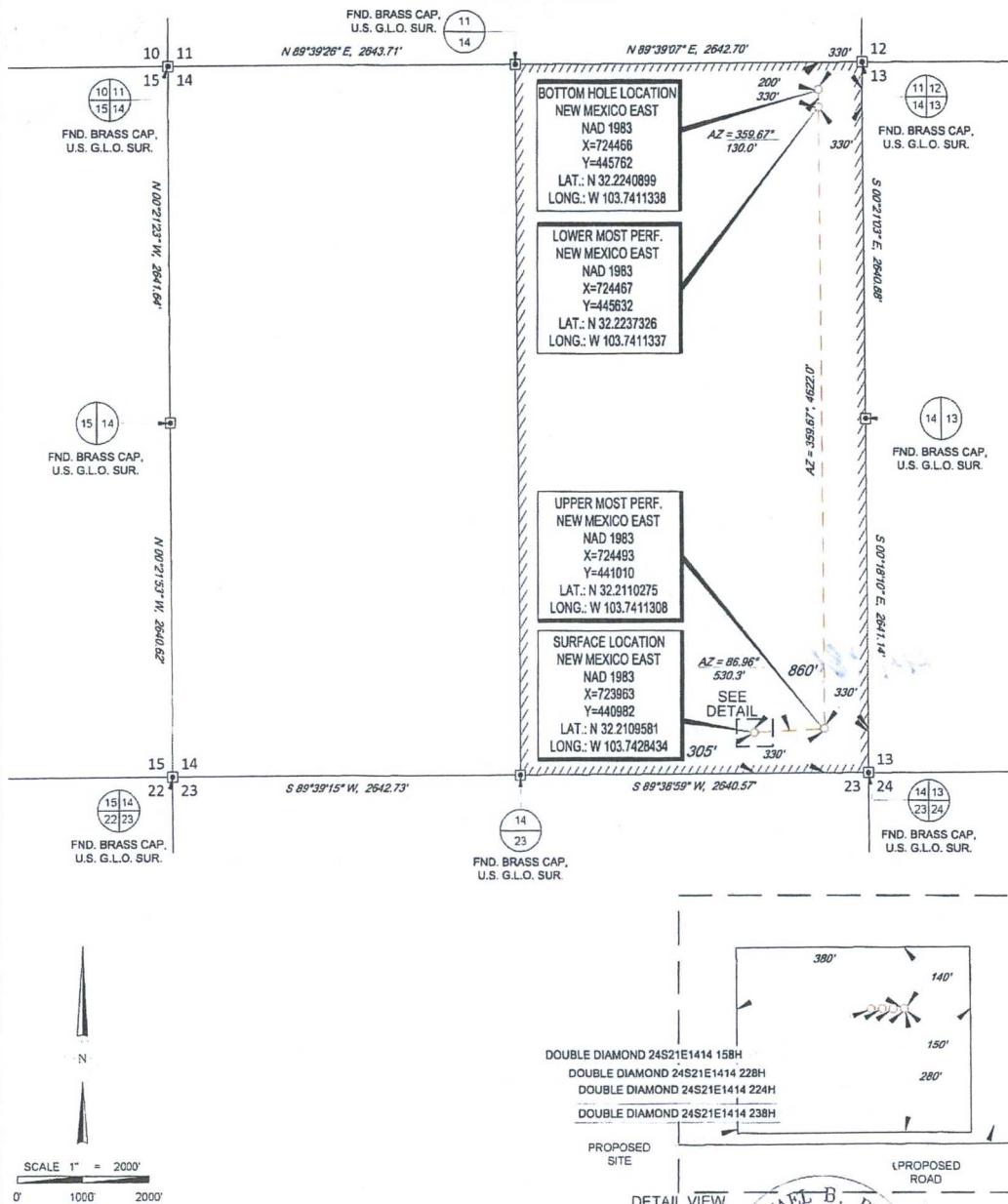
Below are alternatives considered from a conceptual standpoint to reduce the amount of gas flared.

- Power Generation – On lease
  - Only a portion of gas is consumed operating the generator, remainder of gas will be flared
- Compressed Natural Gas – On lease
  - Gas flared would be minimal, but might be uneconomical to operate when gas volume declines
- NGL Removal – On lease
  - Plants are expensive, residue gas is still flared, and uneconomical to operate when gas volume declines

# TAP ROCK

## EXHIBIT 2A

SECTION 14, TOWNSHIP 24-S, RANGE 31-E, N.M.P.M.  
EDDY COUNTY, NEW MEXICO



LEASE NAME & WELL NO.: DOUBLE DIAMOND 24S21E1414 238H

SECTION 14 TWP 24-S RGE 31-E SURVEY N.M.P.M.  
COUNTY EDDY STATE NM  
DESCRIPTION 305' FSL & 860' FEL

**DISTANCE & DIRECTION**  
FROM INT. OF NM-31, & NM-128-E, HEAD EAST ON NM-128 E ±19.6 MILES.  
THENCE SOUTHWEST (RIGHT) ON BUCK JACKSON RD. ±1.1 MILES, THENCE  
SOUTHEAST, (LEFT) ON LEASE RD ±1.6 MILES, THENCE WEST ON PROPOSED  
RD ±215 FEET TO A POINT ±304 FEET SOUTHEAST OF THE LOCATION.

ALL BEARINGS, DISTANCES, AND COORDINATE VALUES CONTAINED HEREON ARE GRID  
BASED UPON THE NEW MEXICO COORDINATE SYSTEM OF 1983, EAST ZONE, U.S. SURVEY  
FEET

THIS EASEMENT/SERVITUDE LOCATION SHOWN HEREON HAS BEEN SURVEYED ON THE GROUND  
UNDER MY SUPERVISION AND PREPARED ACCORDING TO THE EVIDENCE FOUND AT THE TIME OF  
SURVEY, AND DATA PROVIDED BY TAP ROCK OPERATING, LLC. THIS CERTIFICATION IS MADE AND  
LIMITED TO THOSE PERSONS OR ENTITIES SHOWN ON THE FACE OF THIS PLAT AND IS  
NON-TRANSFERABLE. THIS SURVEY IS CERTIFIED FOR THIS TRANSACTION ONLY.

DETAIL VIEW  
SCALE 1" = 300'



Michael B. Brown, P.S. No. 18329  
JANUARY 26, 2018



**TOPOGRAPHIC**  
LOYALTY INNOVATION LEGACY

1400 EVERMAN PARKWAY, Ste. 146 • FT. WORTH, TEXAS 76140  
TELEPHONE (817) 744-7512 • FAX (817) 744-7554  
2903 NORTH BIG SPRING • MIDLAND, TEXAS 79705  
TELEPHONE (432) 692-1653 OR (800) 767-1053 • FAX (432) 692-1743  
WWW.TOPOGRAPHIC.COM