

District I  
1625 N. French Dr., Hobbs, NM 88240  
Phone: (575) 393-6161 Fax: (575) 393-0720  
District II  
811 S. First St., Artesia, NM 88210  
Phone: (575) 748-1283 Fax: (575) 748-9720  
District III  
1000 Rio Brazos Road, Aztec, NM 87410  
Phone: (505) 334-6178 Fax: (505) 334-6170  
District IV  
1220 S. St. Francis Dr., Santa Fe, NM 87505  
Phone: (505) 476-3460 Fax: (505) 476-3462

State of New Mexico  
Energy, Minerals & Natural Resources  
Department  
OIL CONSERVATION DIVISION  
1220 South St. Francis Dr.  
Santa Fe, NM 87505

RECEIVED

FORM C-102

Revised August 1, 2011

Submit one copy to appropriate

District Office

MAX 03 2018

DISTRICT II-ARTESIA O.C.D.

☐ AMENDED REPORT

WELL LOCATION AND ACREAGE DEDICATION PLAT

<sup>1</sup> API Number 30-015-44561	<sup>2</sup> Pool Code 98220	<sup>3</sup> Pool Name PURPLE SAGE; WOLFCAMP(GAS)
<sup>4</sup> Property Code 317853	<sup>5</sup> Property Name TOM MATTHEWS 10-24S-28E RB	<sup>6</sup> Well Number #203H
<sup>7</sup> OGRID No. 228937	<sup>8</sup> Operator Name MATADOR PRODUCTION COMPANY	<sup>9</sup> Elevation 3016'

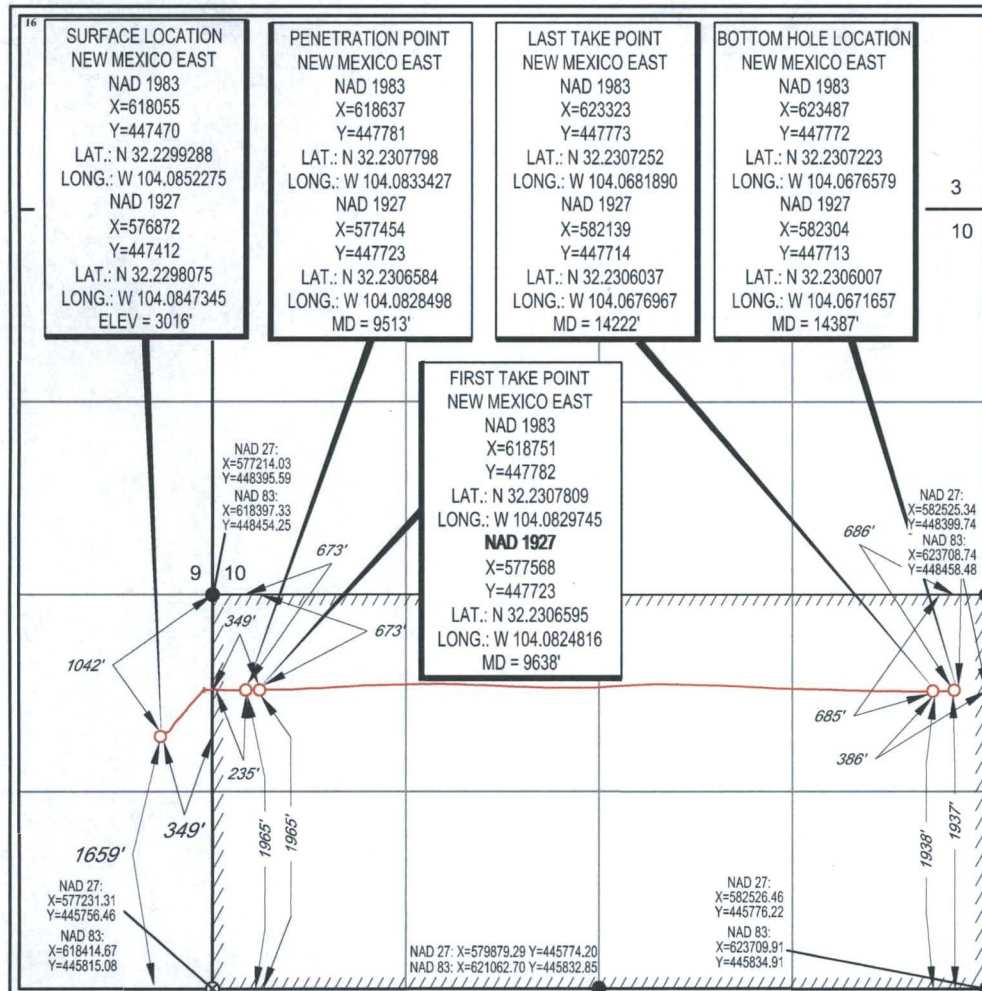
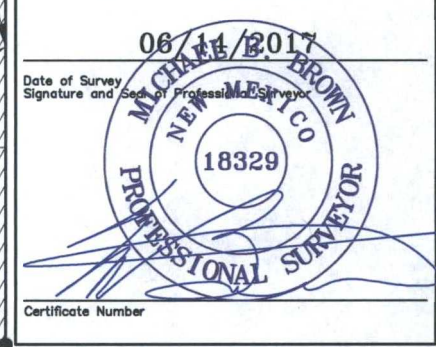
<sup>10</sup>Surface Location

UL or lot no.	Section	Township	Range	Lot Idn	Feet from the	North/South line	Feet from the	East/West line	County
I	9	24-S	28-E	-	1659'	SOUTH	349'	EAST	EDDY

UL or lot no.	Section	Township	Range	Lot Idn	Feet from the	North/South line	Feet from the	East/West line	County
I	10	24-S	28-E	-	1937'	SOUTH	222'	EAST	EDDY

<sup>12</sup> Dedicated Acres 320	<sup>13</sup> Joint or Infill	<sup>14</sup> Consolidation Code	<sup>15</sup> Order No.
--------------------------------------	-------------------------------	----------------------------------	-------------------------

No allowable will be assigned to this completion until all interests have been consolidated or a non-standard unit has been approved by the division.

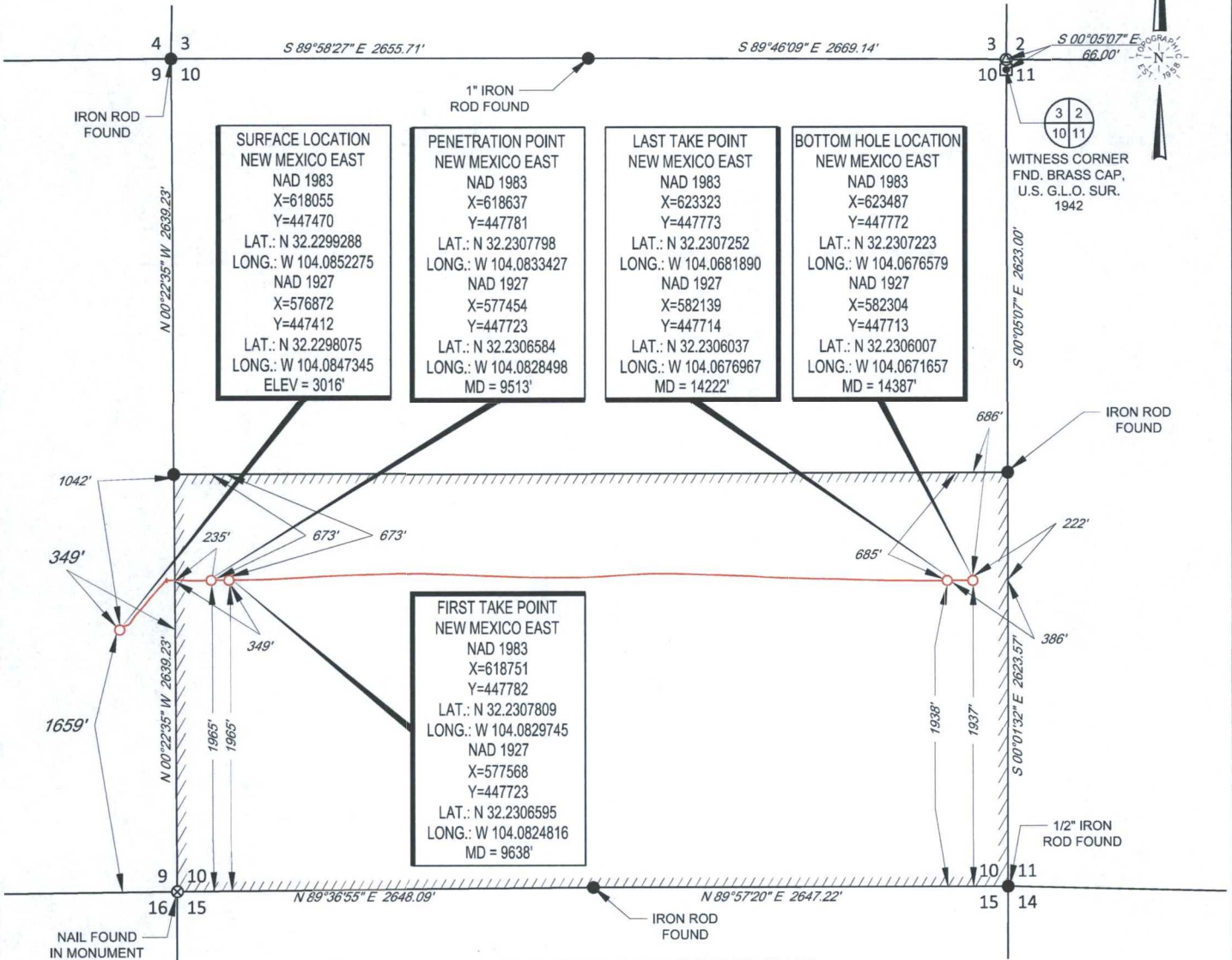
<sup>16</sup> <b>SURFACE LOCATION</b> NEW MEXICO EAST NAD 1983 X=618055 Y=447470 LAT.: N 32.2299288 LONG.: W 104.0852275 NAD 1927 X=576872 Y=447412 LAT.: N 32.2298075 LONG.: W 104.0847345 ELEV = 3016'	<b>PENETRATION POINT</b> NEW MEXICO EAST NAD 1983 X=618637 Y=447781 LAT.: N 32.2307798 LONG.: W 104.0833427 NAD 1927 X=577454 Y=447723 LAT.: N 32.2306584 LONG.: W 104.0828498 MD = 9513'	<b>LAST TAKE POINT</b> NEW MEXICO EAST NAD 1983 X=623323 Y=447773 LAT.: N 32.2307252 LONG.: W 104.0681890 NAD 1927 X=582139 Y=447714 LAT.: N 32.2306037 LONG.: W 104.0676967 MD = 14222'	<b>BOTTOM HOLE LOCATION</b> NEW MEXICO EAST NAD 1983 X=623487 Y=447772 LAT.: N 32.2307223 LONG.: W 104.0676579 NAD 1927 X=582304 Y=447713 LAT.: N 32.2306007 LONG.: W 104.0671657 MD = 14387'	<b>3</b> <b>10</b>
<b>FIRST TAKE POINT</b> NEW MEXICO EAST NAD 1983 X=618751 Y=447782 LAT.: N 32.2307809 LONG.: W 104.0829745 NAD 1927 X=577568 Y=447723 LAT.: N 32.2306595 LONG.: W 104.0824816 MD = 9638'				<b>17 OPERATOR CERTIFICATION</b> I hereby certify that the information contained herein is true and complete to the best of my knowledge and belief, and that this organization either owns a working interest or unleased mineral interest in the land including the proposed bottom hole location or has a right to drill this well at this location pursuant to a contract with an owner of such a mineral or working interest, or to a voluntary pooling agreement or a compulsory pooling order heretofore entered by the division.  Signature: <u>Sara Hartsfield</u> Date: <u>04/26/18</u>  Printed Name: <u>Sara Hartsfield</u>  E-mail Address: <u>shartsfield@matadorresources.com</u>
				<b>18 SURVEYOR CERTIFICATION</b> I hereby certify that the well location shown on this plat was plotted from field notes of actual surveys made by me or under my supervision, and that the same is true to the best of my belief.  Date of Survey: <u>06/14/2017</u> Signature and Seal of Professional Surveyor:   Certificate Number: _____



SCALE: 1" = 1000'

0' 500' 1000'

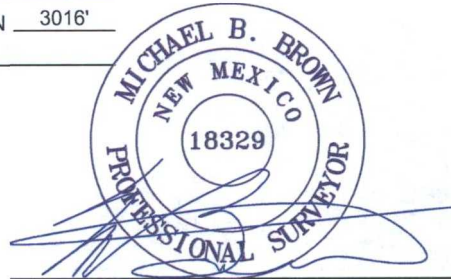
SECTION 9, TOWNSHIP 24-S, RANGE 28-E, N.M.P.M.  
EDDY COUNTY, NEW MEXICO



LEASE NAME & WELL NO.: TOM MATTHEWS 10-24S-28E RB #203H  
SECTION 9 TWP 24-S RGE 28-E SURVEY N.M.P.M.  
COUNTY EDDY STATE NM ELEVATION 3016'  
DESCRIPTION 1659' FSL & 349' FEL



**TOPOGRAPHIC**  
LOYALTY INNOVATION LEGACY  
1400 EVERMAN PARKWAY, Ste. 146 • FT. WORTH, TEXAS 76140  
TELEPHONE: (817) 744-7512 • FAX (817) 744-7554  
2903 NORTH BIG SPRING • MIDLAND, TEXAS 79705  
TELEPHONE: (432) 682-1653 OR (800) 767-1653 • FAX (432) 682-1743  
WWW.TOPOGRAPHIC.COM



Michael Blake Brown, P.S. No. 18329  
APRIL 23, 2018

TOM MATTHEWS 10-24S-28E RB #203H AS-COMPLETED	REVISION:		NOTES:
	INT	DATE	
DATE: 04/23/18			1. ORIGINAL DOCUMENT SIZE: 8.5" X 11" 2. ALL BEARINGS, DISTANCES, AND COORDINATE VALUES CONTAINED HEREIN ARE GRID BASED UPON THE NEW MEXICO COORDINATE SYSTEM OF 1983, EAST ZONE, U.S. SURVEY FEET. 3. THIS EASEMENT/SERVITUDE LOCATION SHOWN HEREON HAS BEEN SURVEYED ON THE GROUND UNDER MY SUPERVISION AND PREPARED ACCORDING TO THE EVIDENCE FOUND AT THE TIME OF SURVEY, AND DATA PROVIDED BY MATADOR PRODUCTION COMPANY. THIS CERTIFICATION IS MADE AND LIMITED TO THOSE PERSONS OR ENTITIES SHOWN ON THE FACE OF THIS PLAT AND IS NON-TRANSFERABLE. THIS SURVEY IS CERTIFIED FOR THIS TRANSACTION ONLY.
FILE: AD_TOM_MATTHEWS_10-24S-28E_RB_203H			
DRAWN BY: AMD			
SHEET: 1 OF 1			



7821 Will Rogers Blvd.  
Fort Worth, Texas 76140  
817.568.1038 (office)  
817.568.1499 (fax)  
www.msdir.com

MS Directional Survey Data Certification

MS Directional Job Number: DDMO-180107  
Survey Type: MWD  
Operating Company: Matador Production Company  
Well Name & Number: Tom Matthews 10 24S 28E RB 203H  
Location: Eddy County, NM  
API Number: 30-015-44561  
Tie In Depth: Surface  
Surveyed Depths: 179' – 14,317' MD  
Projected TD Survey: 14,387' MD  
Dates Performed: 01/24/2018 – 02/09/2018

I certify that the data is true, correct and complete and within the limitations of the tool set forth by MS Directional; that I am authorized and qualified to make this report and that I have reviewed this report and find it conforms to the principles and procedures as set forth by MS Directional.

Digitally signed by:

A handwritten signature in black ink, appearing to read "Tyler Teague", written over a horizontal line.

MWD Surveyor Name:

Tyler Teague

Date:

03-16-2018

Email:

tteague@msdir.com

**CONFIDENTIALITY NOTICE:** This document contains MS Directional's proprietary and confidential information and may not be copied, published, distributed or transmitted, in whole or in part, by any medium or in any form without MS Directional's prior written consent. The information contained in this document is not to be used by or disclosed to any individuals other than those who need to know such information and who have been given notice that such information is proprietary and confidential.