

District I
1625 N. French Dr., Hobbs, NM 88240
Phone: (575) 393-6161 Fax: (575) 393-0720
District II
811 S. First St., Artesia, NM 88210
Phone: (575) 748-1283 Fax: (575) 748-9720
District III
1000 Rio Brazos Road, Aztec, NM 87410
Phone: (505) 334-6178 Fax: (505) 334-6170
District IV
1220 S. St. Francis Dr., Santa Fe, NM 87505
Phone: (505) 476-3460 Fax: (505) 476-3462

State of New Mexico
Energy, Minerals & Natural Resources Department
OIL CONSERVATION DIVISION
1220 South St. Francis Dr.
Santa Fe, NM 87505

Form C-102
Revised August 1, 2011
Submit one copy to appropriate
District Office

☒ AMENDED REPORT

WELL LOCATION AND ACREAGE DEDICATION PLAT

¹ API Number 30-015-44970	² Pool Code 98220	³ Pool Name PURPLE SAGE; WOLFCAMP
⁴ Property Code 321439	⁵ Property Name BLACK RIVER 3-10 FED COM WCA	
⁷ OGRID No. 372137	⁸ Operator Name CHISHOLM ENERGY OPERATING, LLC	⁶ Well Number 3H
		⁹ Elevation 3326.0

¹⁰ Surface Location

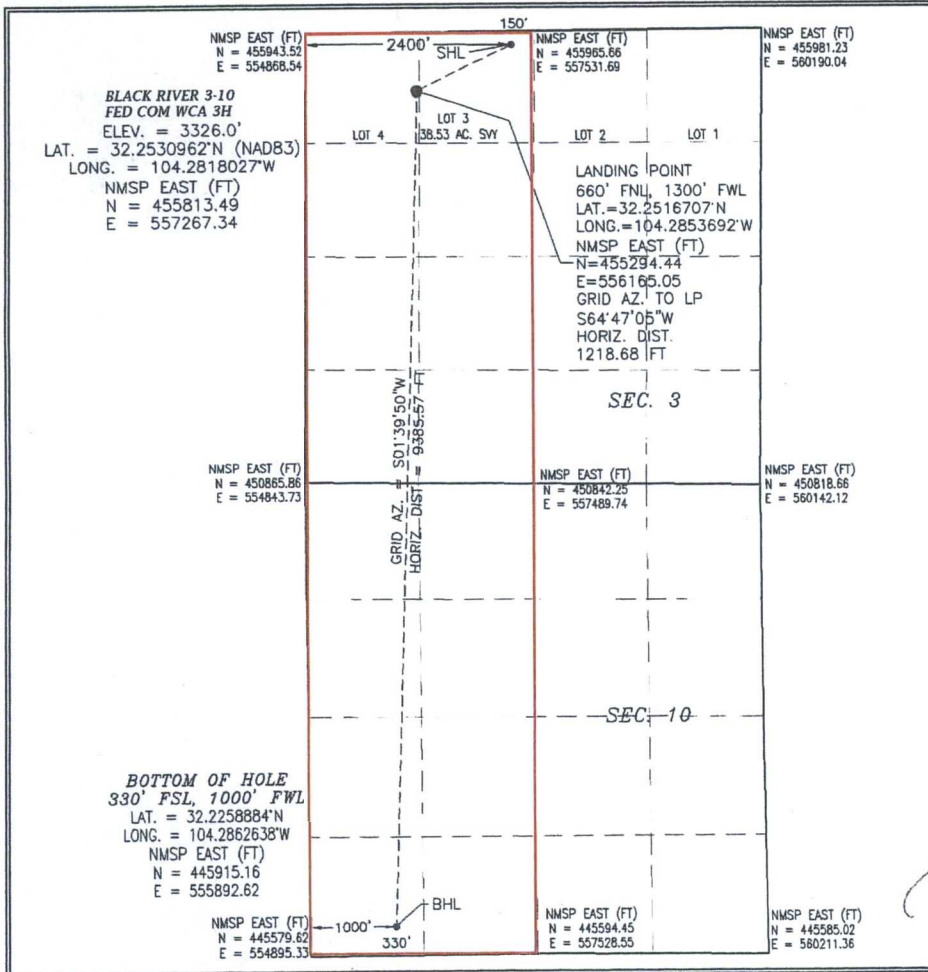
UL or lot no.	Section	Township	Range	Lot Idn	Feet from the	North/South line	Feet from the	East/West line	County
3	3	24 S	26 E		150	NORTH	2400	WEST	EDDY

¹¹ Bottom Hole Location If Different From Surface

UL or lot no.	Section	Township	Range	Lot Idn	Feet from the	North/South line	Feet from the	East/West line	County
M	10	24 S	26 E		330	SOUTH	1000	WEST	EDDY

¹² Dedicated Acres 638.16	¹³ Joint or Infill	¹⁴ Consolidation Code	¹⁵ Order No.
--	-------------------------------	----------------------------------	-------------------------

No allowable will be assigned to this completion until all interests have been consolidated or a non-standard unit has been approved by the division.



¹⁷ OPERATOR CERTIFICATION

I hereby certify that the information contained herein is true and complete to the best of my knowledge and belief, and that this organization either owns a working interest or unleased mineral interest in the land including the proposed bottom hole location or has a right to drill this well at this location pursuant to a contract with an owner of such a mineral or working interest, or to a voluntary pooling agreement or a compulsory pooling order heretofore entered by the division.

Jennifer Elrod 5/15/18
Signature Date

JENNIFER ELROD

Printed Name

jelrod@chisholmenergy.com

E-mail Address

¹⁸ SURVEYOR CERTIFICATION

I hereby certify that the well location shown on this plat was plotted from field notes of actual surveys made by me or under my supervision, and that the same is true and correct to the best of my belief.

MAY 14, 2018

Date of Survey

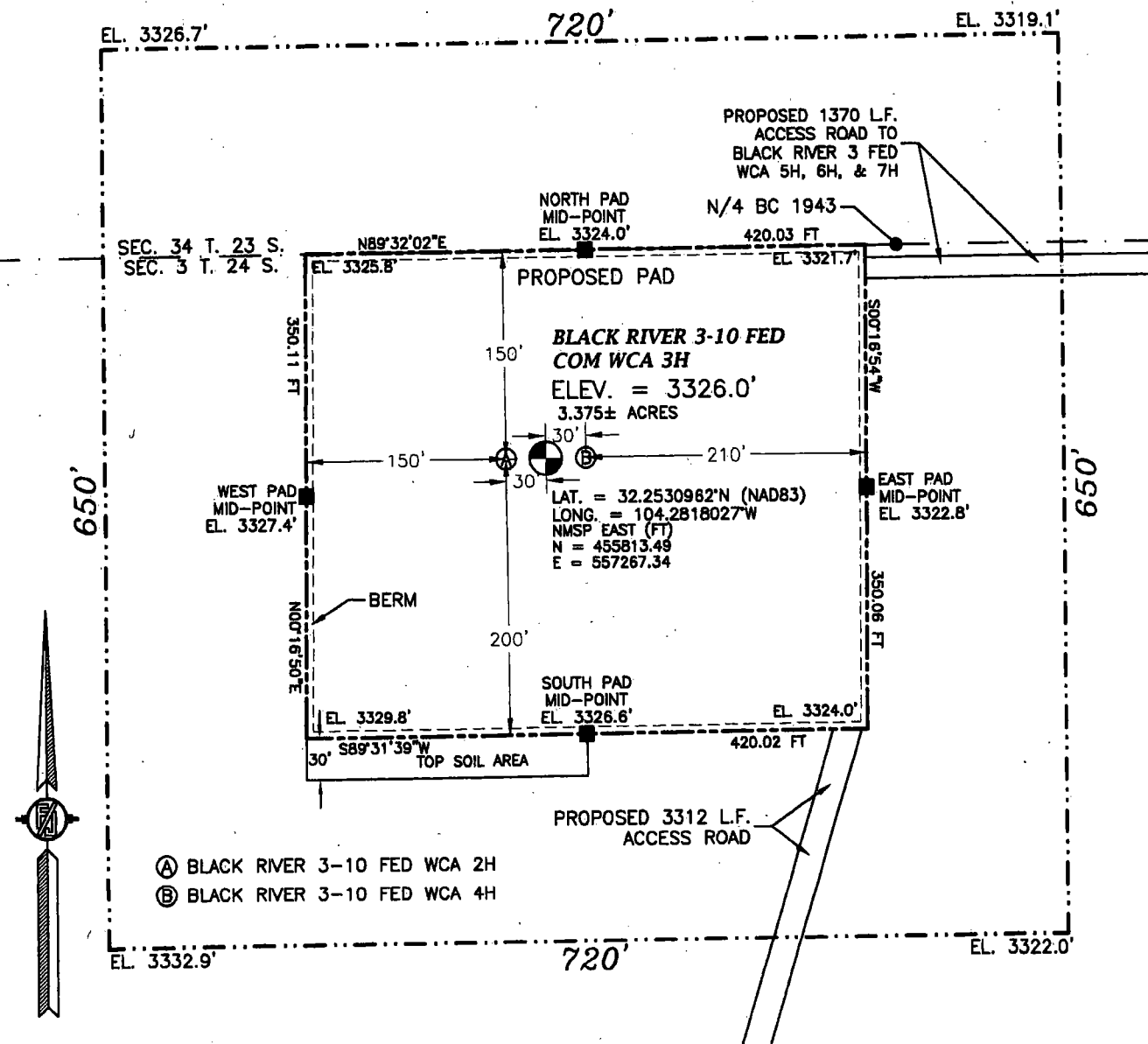
FILMON F. JARAMILLO
Signature and Seal of Professional Surveyor

Certificate Number: **FILMON F. JARAMILLO, PLS 12797**

SURVEY NO. 5298D

**SECTION 3, TOWNSHIP 24 SOUTH, RANGE 26 EAST, N.M.P.M.
EDDY COUNTY, STATE OF NEW MEXICO
SITE MAP**

NOTE: LATITUDE AND LONGITUDE COORDINATES ARE SHOWN USING THE NORTH AMERICAN DATUM OF 1983 (NAD83). LISTED NEW MEXICO STATE PLANE EAST COORDINATES ARE GRID (NAD83). BASIS OF BEARING AND DISTANCES USED ARE NEW MEXICO STATE PLANE EAST COORDINATES MODIFIED TO THE SURFACE. ELEVATION VALUES ARE NAVD 88.



012 60 120 240

SCALE 1" = 120'

DIRECTIONS TO LOCATION

FROM U.S. HWY. 62-180 AND CR. 408 (DARK CANYON RD.) GO SOUTH ON HWY. 62-180 3.5 MILES, TURN LEFT ON CALICHE ROAD AND GO SOUTHEAST 0.9 MILE, TURN LEFT AND GO NORTHEAST 0.3 MILE, BEND LEFT AND GO NORTH 0.51 MILE TO EXISTING PAD FOR BLACK RIVER 3 FEDERAL 1 AND FROM NORTHEAST PAD CORNER FOLLOW PROPOSED ROAD FLAGS NORTH-NORTHEAST 3312' TO THE SOUTHEAST PAD CORNER FOR THIS LOCATION.

**CHISHOLM ENERGY OPERATING, LLC
BLACK RIVER 3-10 FED COM WCA 3H
LOCATED 150 FT. FROM THE NORTH LINE
AND 2400 FT. FROM THE WEST LINE OF
SECTION 3, TOWNSHIP 24 SOUTH,
RANGE 26 EAST, N.M.P.M.
EDDY COUNTY, STATE OF NEW MEXICO**

MAY 14, 2018

SURVEY NO. 5298D

MADRON SURVEYING, INC.

301 SOUTH CANAL
(575) 234-3341

CARLSBAD, NEW MEXICO