

District I  
1625 N. French Dr., Hobbs, NM 88240  
Phone: (575) 393-6161 Fax: (575) 393-0720  
District II  
811 S. First St., Artesia, NM 88210  
Phone: (575) 748-1283 Fax: (575) 748-9720  
District III  
1000 Rio Brazos Road, Aztec, NM 87410  
Phone: (505) 334-6178 Fax: (505) 334-6170  
District IV  
1220 S. St. Francis Dr., Sante Fe, NM 87505  
Phone: (505) 476-3460 Fax: (505) 476-3462

State of New Mexico  
Energy, Minerals & Natural Resources  
Department  
OIL CONSERVATION DIVISION  
1220 South St. Francis Dr.  
Sante Fe, NM 87505

RECEIVED

FORM C-102

Revised August 1, 2011

MAY 21 2018

Submit one copy to appropriate

District Office

DISTRICT II-ARTESIA O.C.D.

☐ AMENDED REPORT

WELL LOCATION AND ACREAGE DEDICATION PLAT

<sup>1</sup> API Number 30-015-42700	<sup>2</sup> Pool Code 73960	<sup>3</sup> Pool Name CARLSBAD;MORROW, SOUTH (GAS)
<sup>4</sup> Property Code 320070	<sup>5</sup> Property Name NORRIS-THORNTON COM	<sup>6</sup> Well Number #2
<sup>7</sup> OGRID No. 228937	<sup>8</sup> Operator Name MATADOR PRODUCTION COMPANY	<sup>9</sup> Elevation 3135'

<sup>10</sup>Surface Location

UL or lot no.	Section	Township	Range	Lot Idn	Feet from the	North/South line	Feet from the	East/West line	County
I	23	23-S	27-E	-	2110'	SOUTH	992'	EAST	EDDY

UL or lot no.	Section	Township	Range	Lot Idn	Feet from the	North/South line	Feet from the	East/West line	County
-	-	-	-	-	-	-	-	-	-

<sup>12</sup> Dedicated Acres 321.74	<sup>13</sup> Joint or Infill	<sup>14</sup> Consolidation Code	<sup>15</sup> Order No.
---	-------------------------------	----------------------------------	-------------------------

No allowable will be assigned to this completion until all interests have been consolidated or a non-standard unit has been approved by the division.

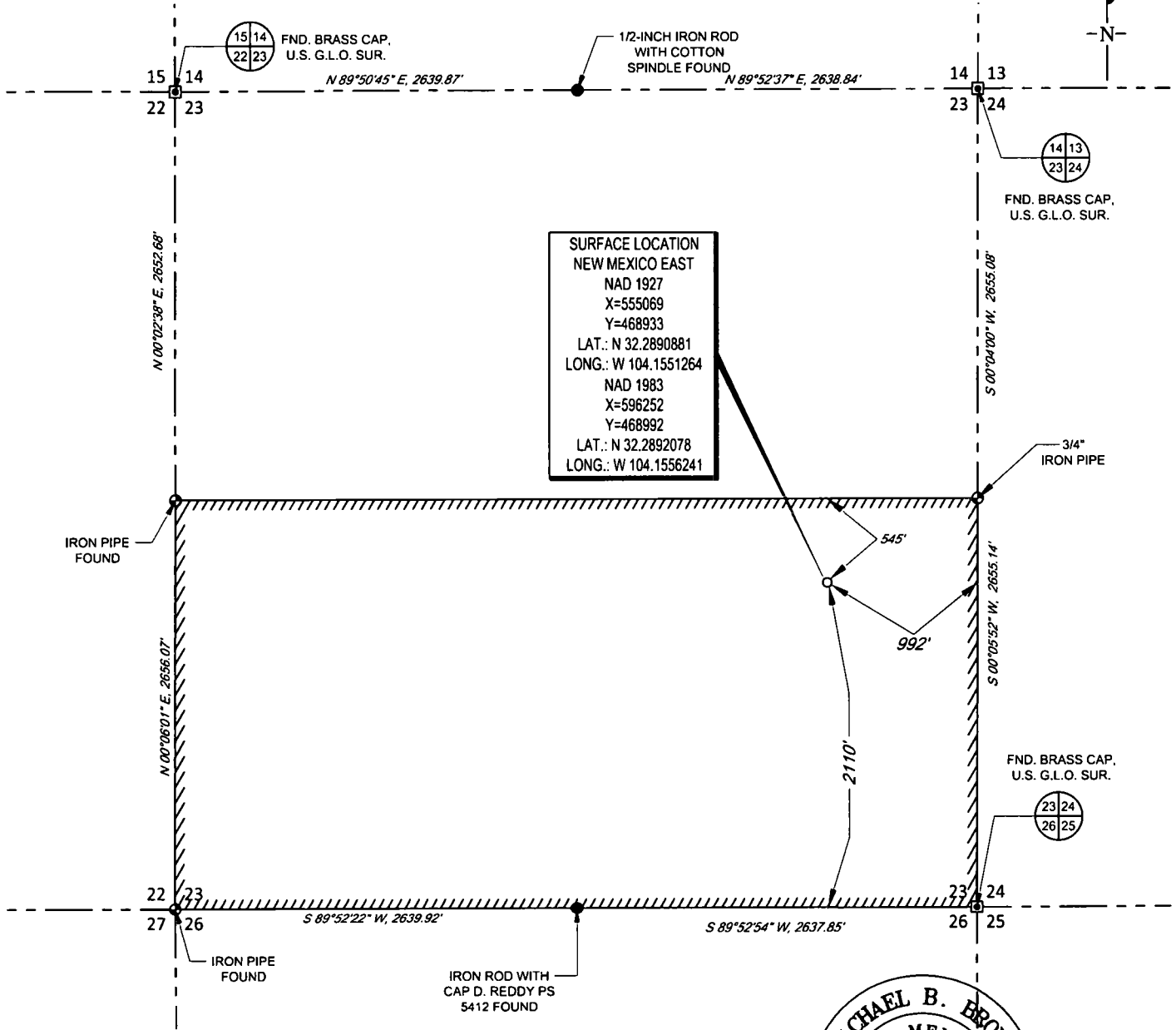
<p><sup>16</sup></p> <p>SURFACE LOCATION NEW MEXICO EAST NAD 1927 X=555069 Y=468933 LAT.: N 32.2890881 LONG.: W 104.1551264 NAD 1983 X=596252 Y=468992 LAT.: N 32.2892078 LONG.: W 104.1556241</p>	<p><sup>17</sup>OPERATOR CERTIFICATION</p> <p>I hereby certify that the information contained herein is true and complete to the best of my knowledge and belief, and that this organization either owns a working interest or undivided mineral interest in the land including the proposed bottom hole location or has a right to drill this well at this location pursuant to a contract with an owner of such a mineral or working interest, or to a voluntary pooling agreement or a compulsory pooling order heretofore entered by the division.</p> <p><i>Sara Hartsfield</i> 5/15/18 Signature Date</p> <p>Sara Hartsfield Printed Name</p> <p>shartsfield@matadorresources.com E-mail Address</p>
	<p><sup>18</sup>SURVEYOR CERTIFICATION</p> <p>I hereby certify that the well location shown on this plat was plotted from field notes of actual surveys made by me or under my supervision, and that the same is true to the best of my belief.</p> <p>11/13/2017 Date of Survey</p> <p><i>Michael Brown</i> Signature and Seal of Professional Surveyor</p> <p>18329 Certificate Number</p>

SCALE: 1" = 1000'

0' 500' 1000'



SECTION 23, TOWNSHIP 23-S, RANGE 27-E, N.M.P.M.  
EDDY COUNTY, NEW MEXICO



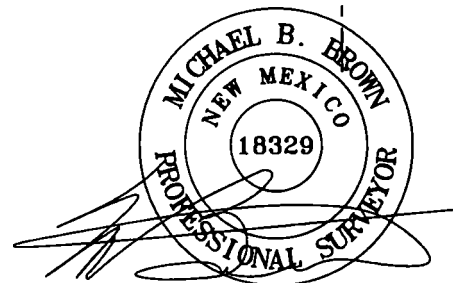
LEASE NAME & WELL NO.: NORRIS-THORNTON COM #2  
SECTION 23 TWP 23-S RGE 27-E SURVEY N.M.P.M.  
COUNTY EDDY STATE NM  
DESCRIPTION 2110' FSL & 992' FEL

DISTANCE & DIRECTION

FROM INT. OF US-285 & W. ELM ST., GO NORTH ON US-285 ±0.8 MILES.  
THENCE WEST ON W. LONDON RD ±3.8 MILES, THENCE SOUTH ON S.  
GRANDI RD. ±0.38 MILES, TO A POINT ±290 FEET WEST OF THE  
LOCATION.

ALL BEARINGS, DISTANCES, AND COORDINATE VALUES CONTAINED HEREON ARE GRID BASED UPON THE NEW MEXICO STATE PLANE COORDINATE SYSTEM, EAST ZONE OF THE NORTH AMERICAN DATUM 1983, U.S. SURVEY FEET. THIS EASEMENT/SERVITUDE LOCATION SHOWN HEREON HAS BEEN SURVEYED ON THE GROUND UNDER MY SUPERVISION AND PREPARED ACCORDING TO THE EVIDENCE FOUND AT THE TIME OF SURVEY, AND DATA PROVIDED BY MATADOR PRODUCTION COMPANY. THIS CERTIFICATION IS MADE AND LIMITED TO THOSE PERSONS OR ENTITIES SHOWN ON THE FACE OF THIS PLAT AND IS NON-TRANSFERABLE. THIS SURVEY IS CERTIFIED FOR THIS TRANSACTION ONLY.

AS OF THE DATE OF SURVEY, ALL ABOVE GROUND APPURTENANCES WITHIN 300' OF THE STAKED LOCATION ARE SHOWN HEREON.



Michael Blake Brown, P.S. No. 19329  
NOVEMBER 27, 2017



**TOPOGRAPHIC**  
LOYALTY INNOVATION LEGACY

1400 EVERMAN PARKWAY, Ste. 197 • FT. WORTH, TEXAS 76140  
TELEPHONE: (817) 744-7512 • FAX (817) 744-7548  
2903 NORTH BIG SPRING • MIDLAND, TEXAS 79705  
TELEPHONE: (432) 682-1653 OR (800) 767-1653 • FAX (432) 682-1743  
WWW.TOPOGRAPHIC.COM